



Youth (U17) IHF Trophy Intercontinental Phase (W)



1. round

Match Team Statistics
Match No. 2

Guinea 33 - 33 Bulgaria
(17 - 15) (16 - 18)

7.4.2026. 17:00
Attendance: 350
Palace of Culture and Sports
Vasil Levski

Referees: Roua Haggui (TUN) / Sahar Haggui (TUN)

Guinea

Players		Goals / shots									Attack				Def.			Penalties			TP				
#	Surname and name	S	Tot.	%	9m	6m	Wing	7m	FB	Brk.	LD	As.	PC	E7	E2	TF	St.	C7	Blk	YC		2m	R	B	
2	CAMARA Mabinty Delmaya	S	6/6	100	1/1	1/1	1/1	1/1		2/2		1			1	4		1				1			59:24
3	SOKPO Edite Ablavy	S	5/6	83		1/1	4/5											1							34:10
5	KOLIE Celestine		0/2	0			0/1		0/1								2	1							28:40
7	RACINE DIALLO Jade Habie		2/4	50		1/3	1/1					1				2		3							36:45
8	SOUMAH Fatoumata Naby	S	7/9	78	2/3	2/3			1/1	2/2		2			2	6									44:26
10	BALDE Housseinatou	S	2/5	40	1/4		1/1											1			1				21:01
11	MANSARE Yarie		3/3	100		2/2			1/1							7		1			1				22:19
12	KEITA Fatou	S	0/1	0	0/1												1	1			3				27:31
13	BANGOURA Mamadama		2/3	67		1/1	0/1		1/1									1							25:44
15	DIAKITE Sounka																								
16	CAMARA Mama Adama	S																							56:48
17	SYLLA N'nady	S	6/7	86		5/6			1/1					1		4		3	1	1	1	1			55:25
18	TRAORE Feremoussou																								4:35
22	CAMARA Fatoumata Bouya																								3:12
Team / bench																									
TOTAL			33/46	72	4/9	13/17	7/10	1/1	4/5	4/4	0/0	4	0	1	3	23	3	13	1	1	7	0	0		

Goalkeepers		Saves / shots								
#	Surname and name	Tot.	%	9m	6m	Wing	7m	FB	Brk.	LD
16	CAMARA Mama Adama	11/42	26	1/3	4/13	3/9	2/12	0/1	0/3	1/1
22	CAMARA Fatoumata Bouya	0/2	0	0/1	0/1					
TOTAL		11/44	25	1/4	4/14	3/9	2/12	0/1	0/3	1/1

Coach: **Mama Saran Sow**

Number of attacks: 66, Efficiency: 50%, Average Duration: 22.02 seconds

Attack by type of defense

	Shots	9m	6m	Wing	TF	E7	E2
On def. 6-0	16/23	3/8	5/7	6/6	10	0	3
On def. 5-1	12/17	1/1	8/10	1/4	13	1	0
Fastbreak	4/5				0	0	0

Defense by type

	Total	9m	6m	Wing	Stl.	C7	2m
Def. 6-0	22/31	3/5	10/14	6/9	3	12	6
Def. 5-1	0/0	0/0	0/0	0/0	0	1	1
Fastbreak	1/1				0	0	0

Attack with superiority / minority / goalkeeper out

	Attack				Reaction		
	Att.	Eff.	Shots	TF	FB	LD	Tot.
6 on 6	48	54%	26/33	15			
6 on 5	5	80%	4/5	0			
5 on 6	12	25%	3/5	7			
4 on 6	1	0%	0/0	1			

Player superiority / GK out counted at the end of attack (in case it changes during attack)

Defense with superiority / minority / goalkeeper out

	Attack				Reaction		
	Att.	Eff.	Shots	TF	FB	LD	Tot.
7 on 6 (GK out)	1	100%	1/1	0	0/0	0/0	0/0
6 on 6	45	44%	20/26	19			
5 on 6	3	0%	0/0	3			
6 on 5	14	71%	10/12	2			
5 on 5	1	100%	1/1	0			
6 on 4	3	33%	1/2	1			

Numbers show attacking numbers of opponent. Lower efficiency of opponent means better defense of this team

Jersey number Tot. Total shooting 6m 6m (line) shooting 9m 9m shooting Wng Wing shooting FB Fastbreak sh. 7m 7m penalty sh.
Brk. Breakthrough sh. LD Long distance sh. As. Assists PC Pass clear chance E7 Earned 7m pen. TF Technical faults St. Steals
2m 2m punishments C7. Committed 7m E2 Earned 2m pun. YC. Yellow cards R/B Red/Blue cards Blk. Blocks S Starting Line-up



Youth (U17) IHF Trophy Intercontinental Phase (W)



1. round

Match Team Statistics

Match No. 2

Guinea 33 - 33 Bulgaria

(17 - 15) (16 - 18)

7.4.2026. 17:00

Attendance: 350

Palace of Culture and Sports

Vasil Levski

Referees: Roua Haggui (TUN) / Sahar Haggui (TUN)

Shot distribution by player

2 M. Camara

		1/1
3/3		2/2

3 E. Sokpo

	1/1	2/2
	1/1	1/1

1 miss.

5 C. Kolie

0/2		

7 J. Racine Diallo

		1/1
		0/1

1 miss. 1/1 lob

8 F. Soumah

2/2		1/1
		2/2
	1/2	

1 post 1/1 lob

10 H. Balde

		0/1
1/1	0/1	
1/1		

1 block

11 Y. Mansare

1/1		
	1/1	1/1

12 F. Keita

	0/1	

13 M. Bangoura

		1/1
0/1	1/1	

15 S. Diakite

17 N. Sylla

1/1		
1/1		
3/3		1/2

18 F. Traore

TOTAL

4/4	1/2	6/7
2/2	0/1	2/2
7/10	4/5	5/7

1 post 2 miss. 1 block 2/2 lob

Saves distribution goalkeepers

16 M. Camara

0/7	1/1	0/6
2/7	3/4	2/8
0/3	1/1	1/4

22 F. Camara

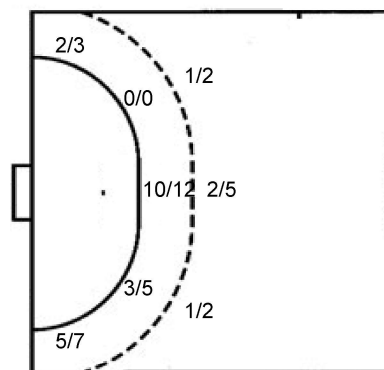
		0/1
		0/1

TOTAL

0/7	1/1	0/7
2/7	3/4	2/9
0/3	1/1	1/4

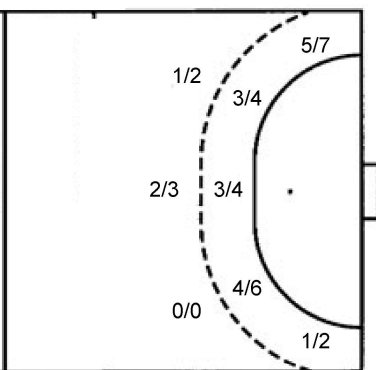
Shots by position

ATTACK



7m penalties	1/1
Fastbreak	4/5
Breakthrough	4/4
Long dist.	0/0

DEFENSE



7m penalties	10/13
Fastbreak	1/1
Breakthrough	3/3
Long dist.	0/1

Shooting statistics

Position	Goals	Sav.	Miss.	Post	Blk.	Total	%
Back (9m)	4	3	0	1	1	9	44
Line (6m)	13	3	1	0	0	17	76
Wing	7	2	1	0	0	10	70
7m penalties	1	0	0	0	0	1	100
Fastbreak	4	1	0	0	0	5	80
Breakthrough	4	0	0	0	0	4	100
Total	33	9	2	1	1	46	72

Jersey number Tot. Total shooting 6m 6m (line) shooting 9m 9m shooting Wng Wing shooting FB Fastbreak sh. 7m 7m penalty sh.
 Brk. Breakthrough sh. LD Long distance sh. As. Assists PC Pass clear chance E7 Earned 7m pen. TF Technical faults St. Steals
 2m 2m punishments C7. Committed 7m E2 Earned 2m pun. YC. Yellow cards R/B Red/Blue cards Blk. Blocks S Starting Line-up

Handball statistics and livescore by Toma-soft ltd (www.toma-soft.hr)



Youth (U17) IHF Trophy Intercontinental Phase (W)



1. round

Match Team Statistics

Match No. 2

Guinea 33 - 33 Bulgaria

(17 - 15) (16 - 18)

7.4.2026. 17:00

Attendance: 350

Palace of Culture and Sports

Vasil Levski

Referees: Roua Haggui (TUN) / Sahar Haggui (TUN)

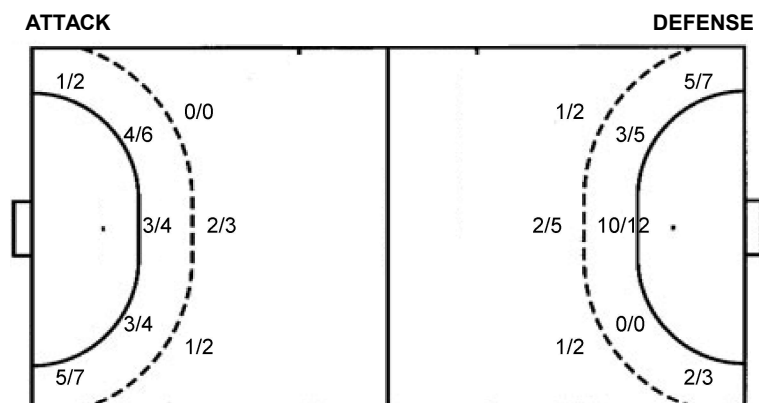
Shot distribution by player

3 P. Vasileva	5 N. Tsankova	6 M. Yumerova	8 E. Yumer	9 S. Stoykova	10 N. Asenova	15 I. Kostadinova
1/1 0/1	4/4 1/2 1/2 1/1	0/1 1/1 1/1		0/1 1/1	1/1 0/1 0/1 1/1	3/3 1/1 0/1 3/3 1/1
					0/1 lob	1 post 1 block
20 E. Kireva	22 D. Mincheva	33 K. Hristova	77 D. Petrova	88 M. Todorova	TOTAL	
		1/1	0/1	3/3 1/1 3/3 2/3 2/2	7/7 0/1 7/7 5/7 1/4 7/9 3/3 0/1 3/4	1 post 1 block 0/1 lob

Saves distribution goalkeepers

1 R. Yankova	16 E. Andreeva	TOTAL
0/1 0/1 0/2 0/1 0/2	0/4 1/2 1/6 0/1 1/1 0/2 3/8 1/4 2/5	0/4 1/2 1/7 0/2 1/1 0/2 3/10 1/5 2/7

Shots by position



7m penalties 10/13
Fastbreak 1/1
Breakthrough 3/3
Long dist. 0/1

7m penalties 1/1
Fastbreak 4/5
Breakthrough 4/4
Long dist. 0/0

Shooting statistics

Position	Goals	Sav.	Miss.	Post	Blk.	Total	%
Back (9m)	3	1	0	0	1	5	60
Line (6m)	10	4	0	0	0	14	71
Wing	6	3	0	0	0	9	67
7m penalties	10	2	0	1	0	13	77
Fastbreak	1	0	0	0	0	1	100
Breakthrough	3	0	0	0	0	3	100
Total	33	10	0	1	1	45	73

Jersey number Tot. Total shooting 6m 6m (line) shooting 9m 9m shooting Wng Wing shooting FB Fastbreak sh. 7m 7m penalty sh.
Brk. Breakthrough sh. LD Long distance sh. As. Assists PC Pass clear chance E7 Earned 7m pen. TF Technical faults St. Steals
2m 2m punishments C7. Committed 7m E2 Earned 2m pun. YC. Yellow cards R/B Red/Blue cards Blk. Blocks S Starting Line-up

