



Cumulative Statistics
累積統計 / Statistiques cumulées

SWE - Sweden
After 8 matches

Players		MP	Shots									Offence		Defence		Punishments			TP	
No.	Name		G/S	%	6m	Wing	9m	7m	FB	BT	EG	AS	TO	ST	BS	YC	2Min	RC		BC
1	BUNDSSEN Johanna	8									4	4								4:49:48
6	STROMBERG Carin	8	34/62	55	8/18		13/29			9/10	4/5	36	10	1	1	1	3			4:58:47
7	BLOHM Linn	7	24/28	86	20/24					4/4		4	5	3	5		3	1		5:35:41
8	ROBERTS Jamina	8	39/59	66	11/19	1/1	4/13			4/4	19/22	30	15	7	4		6			5:28:41
9	PETREN Melissa	8	6/20	30	1/8		3/9				2/3	6	6							59:16
10	LUNDSTROM Mathilda	8	18/26	69	3/4	7/12				7/9	1/1	1	2	5			1			4:28:34
14	WESTBERG Johanna	8	22/33	67	1/2		2/9	18/21			1/1	5	2							37:15
16	RYDE Jessica	8											1							2:39:36
17	DANO Nina	1	1/4	25			1/3				0/1	3	2							31:59
19	LAGERQUIST Anna	8	3/7	43	3/7							5	1	2	3	1	5			4:24:26
23	LINDQVIST Emma	8	15/31	48	6/11	0/1	2/8			2/4	5/7	11	4	1	2	1	5			5:54:46
24	HAGMAN Nathalie	8	23/32	72	2/2	9/12				7/11	4/6		2	1						3:39:34
29	THORLEIFSDOTTIR Kristin	8	2/3	67			1/2				1/1	2	4							1:23:17
38	HANSSON Elin	8	28/42	67	2/2	19/32				7/8		4	9	5						7:16:51
42	CARLSON Jenny	8	22/42	52	9/14	1/3	6/18			2/2	4/5	7	9				3			3:10:00
Bench/Team													4							
Totals			237/389	61	66/111	37/61	32/91	25/32	30/37	42/51	5/6	118	80	25	15	3	26	1		

Goalkeepers		Total Shots		6m Shots		Wing Shots		9m Shots		7m Shots		Fast Breaks		Breakthroughs	
No.	Name	S/S	%	S/S	%	S/S	%	S/S	%	S/S	%	S/S	%	S/S	%
1	BUNDSSEN Johanna	49/190	26	11/55	20	9/35	26	15/39	38	4/23	17	1/10	10	9/28	32
16	RYDE Jessica	39/119	33	7/34	21	8/19	42	8/20	40	11/21	52	2/8	25	3/17	18
EG		7													
Totals		88/316	28	18/89	20	17/54	31	23/59	39	15/44	34	3/18	17	12/45	27

Team Shots	Goals	Saves	Missed	Post	Blocked	Total	%
6m Shots	66	29	8	5	3	111	59
Wing Shots	37	13	5	6		61	61
9m Shots	32	26		8	14	91	35
7m Shots	25	6	1		N/A	32	78
Fast Breaks	30	6		1		37	81
Breakthroughs	42	5		4		51	82
Empty Goal	5	N/A		1		6	83
Totals	237	85	25	25	17	389	61

Played		
PR	ESP	31 - 24
PR	ROC	36 - 24
PR	FRA	28 - 28
PR	BRA	34 - 31
PR	HUN	23 - 26
QF	KOR	39 - 30
SF	FRA	27 - 29
BM	NOR	19 - 36

Number of Attacks: 445, Scoring Efficiency: 53%



Cumulative Statistics
 累積統計 / Statistiques cumulées

SWE - Sweden
 After 8 matches

Shots Distribution

Players

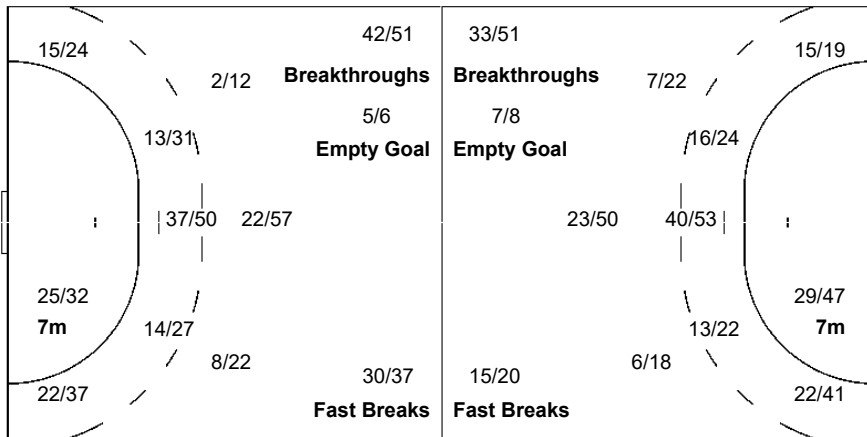
Goals / Shots

1 BUNDSSEN J	6 STROMBERG C	7 BLOHM L	8 ROBERTS J	9 PETREN M	10 LUNDSTROM M	14 WESTBERG J
	6/8 5/6 6/6	3/3 1/1 6/6	8/8 1/2 6/7	1/1 0/1 1/1	3/4 0/1	2/3 6/6
	3/7 1/2 2/4	4/6 3/3	2/7 5/7	0/1 1/2	1/2 0/1	0/3 0/1 3/4
	7/9 1/3 3/4	4/4 1/1 2/2	9/11 1/2 7/7	2/2 0/4 1/1	3/3 7/7 4/4	2/2 1/2 8/8
	1-Missed 6-Post 6-Blocked 2-Missed		4-Missed 2-Post 2-Blocked 2-Missed 1-Post 4-Blocked 3-Missed 1-Post			2-Missed 1-Post 1-Blocked
16 RYDE J	17 DANO N	19 LAGERQUIST A	23 LINDQVIST E	24 HAGMAN N	29 THORLEIFSDOTTIR K	38 HANSSON E
			2/3 2/2	1/3 1/1 2/2	0/1 2/2	1/1 9/10
	0/1	0/2 0/1 1/1	1/5 0/2 4/5	4/7 3/4		3/4 3/7
	1/1	2/2	1/2 1/2 4/4	7/7 2/3 3/3		6/7 3/3 3/3
	1-Post 1-Blocked	1-Post	3-Missed 3-Post	1-Missed 1-Post		3-Missed 4-Post
42 CARLSON J						
1/2 2/4						
2/3 0/2 6/8						
6/7 1/1 4/4						
4-Missed 4-Post 3-Blocked						

Team
 Goals / Shots

27/36	9/12	42/47
20/48	1/9	31/45
48/55	18/28	41/42
25-Missed 25-Post 17-Blocked		

Offence



Goalkeepers
 Saves / Shots

2/15	10/23	3/21
21/45	12/16	16/35
8/59	8/39	8/63

1 BUNDSSEN J

1/11	7/14	3/12
13/32	6/7	10/21
3/34	2/19	4/40

16 RYDE J

1/4	3/9	0/9
8/13	6/6	6/14
5/24	6/19	4/21

Legend:

% Efficiency	2Min 2-Minute Suspensions	6m 6-metre Shots	7m 7-metre Shots	9m 9-metre Shots
AS Assists	BC Blue Cards	BM Bronze Medal Match	BS Blocked Shots	BT Breakthroughs
EG Empty Goal	FB Fast Breaks	G/S Goals/Shots	MP Matches Played	N/A Not Applicable
No. Uniform Number	PR Preliminary Round	QF Quarterfinal	RC Red Cards	S/S Saves/Shots
SF Semifinal	ST Steals	TO Turnovers	TP Time Played	Wing Wing Shots
YC Yellow Cards				