



Match Team Statistics

チームの試合統計 / Statistiques du match par équipe

Match 9

SWE 36 - 24 ROC

(15 - 9) (21 - 15)

Referees: ELSAIED H / ELSAIED Y (EGY)

SWE - Sweden

Players		Shots									Offence		Defence		Punishments			TP	
No.	Name	G/S	%	6m	Wing	9m	7m	FB	BT	EG	AS	TO	ST	BS	YC	2Min	RC		BC
1	BUNDSEN Johanna										1	1							58:46
6	STROMBERG Carin	8/11	73	0/1		5/6			2/3	1/1	6								42:47
7	BLOHM Linn	5/5	100	5/5							1		1						57:51
8	ROBERTS Jamina	7/7	100	1/1				1/1	5/5		4	4	1			1			40:11
9	PETREN Melissa	4/4	100			2/2			2/2		1	1							3:16
10	LUNDSTROM Mathilda	4/4	100	2/2	2/2														24:48
14	WESTBERG Johanna	0/2	0			0/1	0/1												2:37
16	RYDE Jessica																		0:18
19	LAGERQUIST Anna																		27:06
23	LINDQVIST Emma	1/6	17		0/1	0/1		0/2	1/2										49:34
24	HAGMAN Nathalie	3/3	100		2/2		1/1												35:09
29	THORLEIFSDOTTIR Kristin																		
38	HANSSON Elin	3/5	60		2/4			1/1				1							58:04
42	CARLSON Jenny	1/2	50			1/2					1								19:33
	Bench/Team											1							
Totals		36/49	73	8/9	6/9	8/12	1/2	2/4	10/12	1/1	14	8	2			1			

Goalkeepers		Total Shots		6m Shots		Wing Shots		9m Shots		7m Shots		Fast Breaks		Breakthroughs	
No.	Name	S/S	%	S/S	%	S/S	%	S/S	%	S/S	%	S/S	%	S/S	%
1	BUNDSEN Johanna	11/34	32	1/4	25	1/4	25	5/11	45	1/5	20	0/4	0	3/6	50
16	RYDE Jessica	0/1	0							0/1	0				
Totals		11/35	31	1/4	25	1/4	25	5/11	45	1/6	17	0/4	0	3/6	50

Team Shots	Goals	Saves	Missed	Post	Blocked	Total	%
6m Shots	8	1				9	89
Wing Shots	6	2	1			9	67
9m Shots	8	2		1	1	12	67
7m Shots	1	1			N/A	2	50
Fast Breaks	2	2				4	50
Breakthroughs	10	1		1		12	83
Empty Goal	1	N/A				1	100
Totals	36	9	1	2	1	49	73

Number of Attacks: 55, Scoring Efficiency: 65%



Match Team Statistics

チームの試合統計 / Statistiques du match par équipe

Match 9

SWE 36 - 24 ROC

(15 - 9) (21 - 15)

Referees: ELSAIED H / ELSAIED Y (EGY)

SWE - Sweden

Shots Distribution

Players

Goals / Shots

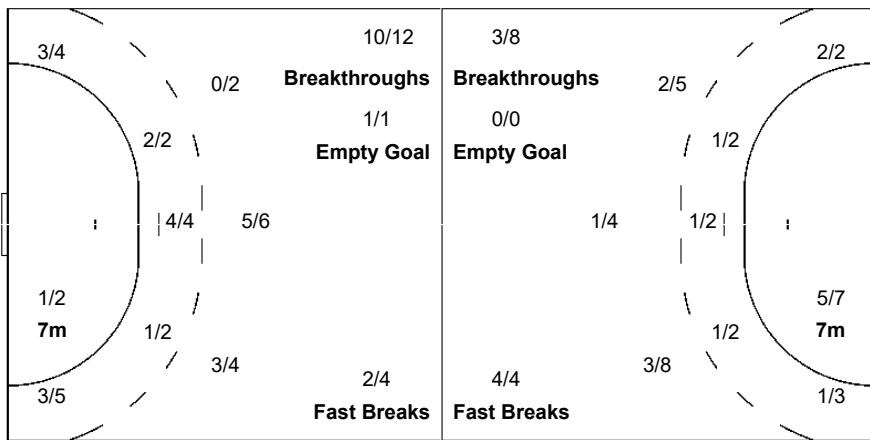
1 BUNDSSEN J	6 STROMBERG C	7 BLOHM L	8 ROBERTS J	9 PETREN M	10 LUNDSTROM M	14 WESTBERG J
	1/1 2/2 1/1	1/1 1/1	1/1 1/1 4/4	1/1		
	1/1 1/1 1/2	1/1 2/2	1/1	1/1 1/1	2/2 2/2	0/1
	1-Post 1-Blocked					0/1

16 RYDE J	19 LAGERQUIST A	23 LINDQVIST E	24 HAGMAN N	29 THORLEIFSDOTTIR K	38 HANSSON E	42 CARLSON J
		0/1			1/2	
		0/2 0/1 0/1	1/1 1/1			
		1/1	1/1		1/1 1/1	1/1
				1-Missed		1-Post

Team Goals / Shots

3/4	3/3	8/9
2/5	0/1	3/4
5/5	4/5	8/9
1-Missed	2-Post	1-Blocked

Offence



Goalkeepers Saves / Shots

0/1		0/1
3/6	3/4	3/6
0/5	1/4	1/8

1 BUNDSSEN J

0/1		0/1
3/6	3/4	3/6
0/5	1/4	1/7

16 RYDE J

		0/1



Match Team Statistics

チームの試合統計 / Statistiques du match par équipe

Match 9

SWE 36 - 24 ROC

(15 - 9) (21 - 15)

Referees: ELSAIED H / ELSAIED Y (EGY)

ROC - ROC

Players		Shots									Offence		Defence		Punishments			TP	
No.	Name	G/S	%	6m	Wing	9m	7m	FB	BT	EG	AS	TO	ST	BS	YC	2Min	RC		BC
1	SEDOYKINA Anna												1						7:49
2	KUZNETSOVA Polina	3/3	100		1/1			1/1	1/1				1		1				37:11
3	GORSHKOVA Polina	1/1	100		1/1						1								20:58
7	DMITRIEVA Daria	2/8	25	1/2		1/5			0/1		1	3		1					51:38
8	SEN Anna										1	1	1			1			23:55
13	VYAKHIREVA Anna	3/7	43			1/3	0/1		2/3		3	1				2			35:10
14	VEDEKHINA Polina	5/7	71			1/2	4/4		0/1			3							27:04
19	MAKEEVA Kseniia																		45:18
23	MIKHAYLICHENKO Elena	1/3	33			1/2			0/1		1		1			1			14:08
25	FOMINA Olga	1/2	50		1/2														17:16
33	ILINA Ekaterina	2/7	29	1/2		0/2	1/2		0/1		2								23:29
36	MANAGAROVA Iuliia	3/5	60	0/1	0/1				3/3		1								40:25
39	SKOROBOGATCHENKO Antonina	3/4	75	1/1		2/3													25:58
88	KALININA Viktoriia										1								49:41
	Bench/Team																		
	Totals	24/47	51	3/6	3/5	6/17	5/7	4/4	3/8		11	8	4	1	1	4			

Goalkeepers		Total Shots		6m Shots		Wing Shots		9m Shots		7m Shots		Fast Breaks		Breakthroughs	
No.	Name	S/S	%	S/S	%	S/S	%	S/S	%	S/S	%	S/S	%	S/S	%
1	SEDOYKINA Anna	0/6	0	0/2	0	0/1	0	0/1	0					0/2	0
88	KALININA Viktoriia	9/38	24	1/7	14	2/7	29	2/9	22	1/2	50	2/4	50	1/9	11
	EG		1												
	Totals	9/45	20	1/9	11	2/8	25	2/10	20	1/2	50	2/4	50	1/11	9

Team Shots	Goals	Saves	Missed	Post	Blocked	Total	%
6m Shots	3	1	1	1		6	50
Wing Shots	3	1		1		5	60
9m Shots	6	5	3	3		17	35
7m Shots	5	1		1	N/A	7	71
Fast Breaks	4					4	100
Breakthroughs	3	3	2			8	38
Empty Goal		N/A					
Totals	24	11	6	6		47	51

Number of Attacks: 54, Scoring Efficiency: 44%



Match Team Statistics

チームの試合統計 / Statistiques du match par équipe

Match 9

SWE 36 - 24 ROC

(15 - 9) (21 - 15)

Referees: ELSAIED H / ELSAIED Y (EGY)

ROC - ROC

Shots Distribution

Players

Goals / Shots

1 SEDOYKINA A	2 KUZNETSOVA P	3 GORSHKOVA P	7 DMITRIEVA D	8 SEN A	13 VYAKHIREVA A	14 VEDEKHINA P
			0/1		1/1	1/1
	1/1	1/1			1/1	0/2
		1/1				2/2

3-Missed 1-Post 3-Post

19 MAKEEVA K	23 MIKHAYLICHENKO E	25 FOMINA O	33 ILINA E	36 MANAGAROVA I	39 SKOROBOGATCHENKO A	88 KALININA V
			1/2	0/1	0/1	
	1/1			1/1	0/2	
		1/1			1/1	
				2/2		
					1/1	1/1

2-Missed 1-Post 1-Missed 1-Post

Team Goals / Shots

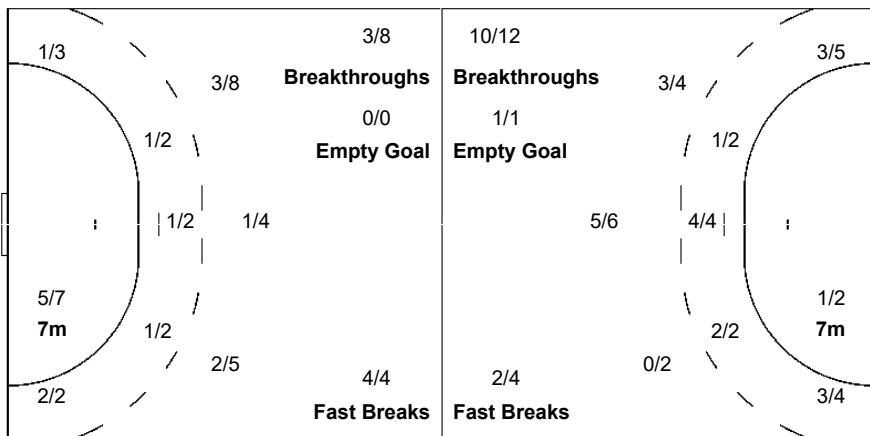
1/1		1/1
3/6	1/4	3/6
5/5	3/4	7/8

6-Missed 6-Post

Offence

Defence

Goalkeepers Saves / Shots



1/4	0/3	1/9
3/5	1/1	1/4
0/5	1/5	1/9

1 SEDOYKINA A

0/1	0/2	
	0/1	0/2

88 KALININA V

1/3	0/1	1/9
3/5	1/1	1/4
0/5	1/3	1/7

Legend:						
% Efficiency	2Min 2-Minute Suspensions	6m 6 metre Shots	7m 7-metre Shots	9m 9-metre Shots		
AS Assists	BC Blue Cards	BS Blocked Shots	BT Breakthroughs	D Direct Red Card		
EG Empty Goal	FB Fast Breaks	G/S Goals/Shots	N/A Not Applicable	No. Uniform Number		
RC Red Cards	S/S Saves/Shots	ST Steals	TO Turnover	TP Time Played		
Wing Wing Shots	X Red Card After 3rd 2-Minute Suspension	YC Yellow Cards				