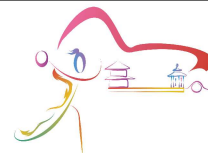




# 10th IHF Women's Youth World Championship 2024



Final Round, 29-32. place

Match Team Statistics

## Canada 21 - 31 Guinea

22.8.2024. 11:15

Match No. 93

(9 - 18) (12 - 13)

Attendance: 300

Vocational and Technical College

Referees: Agustin Conberse (ARG) / Santiago Correa (ARG)

### Canada

#	Surname and name	S	Goals / shots								Attack				Def.			Penalties			TP			
			Tot.	%	9m	6m	Wing	7m	FB	Brk.	LD	As.	PC	E7	E2	TF	St.	C7	Bik	YC		2m	R	B
4	REID Maxim	S	0/1	0		0/1									1	1	1							43:09
5	CHAGNON Ophély	S	2/4	50	0/1		0/1		2/2					1	2	1								12:11
6	RENY Annabelle		1/3	33			1/3							1										20:37
7	LECLAIR Amélie		5/8	63	0/2				1/1	3/4	1/1	2		5	3		1							46:28
8	BLAIS Doriane	S	0/1	0			0/1									2				1	1			17:00
9	LANDRY Gabrielle		0/1	0		0/1						1												29:15
10	BEN HASSIN Hadyle		1/4	25	0/2	0/1		1/1						2										15:34
12	JANELLE Rosemary	S										1		1										24:33
14	BOISCLAIR Florence	S	1/4	25	1/4							1	2		5	1				1				37:19
15	RIOUX Sofia		5/6	83		1/2	2/2		1/1	1/1				1	2	4								42:31
16	FLORESCU Alice													2										21:08
19	HALUS-UDREA Clara Maria	S												1							1			14:11
20	VON KUSTER Brynn		1/3	33	0/2			1/1				1		4										18:54
22	LEMAIRE Mahély	S	4/12	33	3/9	1/1				0/2			3	1	1	7								34:36
26	FOURNIER Chloé													1										20:36
37	VRDOLJAK Katarina		1/1	100		1/1																		21:58
Team / bench																								
UKUPNO			21/48	44	4/20	3/7	3/7	2/2	4/4	4/7	1/1	5	5	2	3	34	10	3	1	0	3	2	0	

#	Surname and name	Saves / shots								
		Tot.	%	9m	6m	Wing	7m	FB	Brk.	LD
12	JANELLE Rosemary	8/21	38	1/4	3/6	1/3	0/2	0/2	3/4	
16	FLORESCU Alice	7/19	37	0/1	2/4	2/5	0/1	1/2	2/6	
TOTAL		15/40	38	1/5	5/10	3/8	0/3	1/4	5/10	0/0

Coach: Eric Choquette

Number of attacks: 77, Efficiency: 27%, Average Duration: 23.97 seconds

### Attack by type of defense

	Shots	9m	6m	Wing	TF	E7	E2
On def. 6-0	2/8	0/2	1/3	1/3	1	0	0
On def. 5-1	9/20	3/12	2/3	2/2	11	0	1
On def. 4-2	0/2	0/0	0/0	0/0	2	1	1
On def. 3-3	2/7	1/4	0/1	0/1	14	1	1
On def. press.	1/4	0/2	0/0	0/1	6	0	0
Fastbreak	4/4				0	0	0

### Defense by type

	Total	9m	6m	Wing	Stl.	C7	2m
Def. 6-0	9/13	2/3	3/4	3/4	3	2	0
Def. 5-1	10/22	2/4	2/5	2/5	5	1	0
Def. press.	0/1	0/0	0/1	0/0	2	0	0
Fastbreak	4/6				0	0	3

### Attack with superiority / minority / goalkeeper out

	Attack				Reaction		
	Att.	Eff.	Shots	TF	FB	LD	Tot.
7 on 6 (GK out)	28	29%	8/16	12	2/3	1/3	3/6
7 on 5 (GK out)	4	25%	1/3	1	0/0	0/1	0/1
7 on 4 (GK out)	2	0%	0/2	0	0/0	0/0	0/0
6 on 6 (GK out)	10	30%	3/4	6	0/0	4/4	4/4
6 on 6	27	30%	8/15	12			
6 on 5	2	50%	1/1	1			
6 on 4	1	0%	0/1	0			
5 on 6	2	0%	0/1	1			
5 on 5	1	0%	0/0	1			

Player superiority / GK out counted at the end of attack (in case it changes during attack)

### Defense with superiority / minority / goalkeeper out

	Attack				Reaction		
	Att.	Eff.	Shots	TF	FB	LD	Tot.
6 on 6 (GK out)	1	0%	0/0	1	0/0	1/1	1/1
5 on 6 (GK out)	1	0%	0/0	1	0/0	0/0	0/0
6 on 6	54	37%	20/35	19			
5 on 6	6	17%	1/3	3			
6 on 5 (GK out)	1	0%	0/0	1	0/0	0/0	0/0
6 on 5	11	91%	10/11	0			
5 on 5	1	0%	0/1	0			

Numbers show attacking numbers of opponent. Lower efficiency of opponent means better defense of this team

# Jersey number Tot. Total shooting 6m 6m (line) shooting 9m 9m shooting Wng Wing shooting FB Fastbreak sh. 7m 7m penalty sh.  
 Brk. Breakthrough sh. LD Long distance sh. As. Assists PC Pass clear chance E7 Earned 7m pen. TF Technical faults St. Steals  
 2m 2m punishments C7. Committed 7m E2 Earned 2m pun. YC. Yellow cards R/B Red/Blue cards Blk. Blocks S Starting Line-up

Handball statistics and livescore by Toma-soft ltd (www.toma-soft.hr)



# 10th IHF Women's Youth World Championship 2024



Final Round, 29-32. place

## Match Team Statistics

Match No. 93

## Canada 21 - 31 Guinea

(9 - 18) (12 - 13)

22.8.2024. 11:15

Attendance: 300

Vocational and Technical College

Referees: Agustin Conberse (ARG) / Santiago Correa (ARG)

## Shot distribution by player

<b>4 M. Reid</b> 0/1	<b>5 O. Chagnon</b> 1/1 1 post 1 block	<b>6 A. Reny</b> 0/1 1 miss.	<b>7 A. Leclair</b> 0/1 1/1 1/2 1/1 1/1 1/1 1 miss.	<b>8 D. Blais</b> 1 miss.	<b>9 G. Landry</b> 0/1	<b>10 H. Ben Hassin</b> 1/1 2 miss. 1 block
<b>14 F. Boisclair</b> 0/1 1/1 0/1 0/1	<b>15 S. Rioux</b> 1/1 3/3 1/1 1 post	<b>19 C. Halus-Udrea</b>	<b>20 B. Von Kuster</b> 0/1 1/2	<b>22 M. Lemaire</b> 1/1 0/1 0/1 0/1 1/2 0/1 2/2 1 miss. 2 block	<b>26 C. Fournier</b>	<b>37 K. Vrdoljak</b> 1/1

## TOTAL

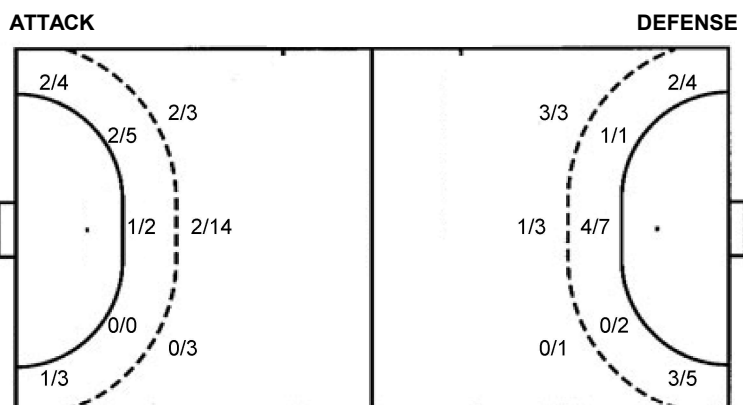
3/3	0/3	1/3
	1/4	2/2
7/10	0/2	7/9

2 post 6 miss. 4 block

## Saves distribution goalkeepers

<b>12 R. Janelle</b> 1/1 3/3 3/4 1/7 0/2 0/4	<b>16 A. Florescu</b> 0/3 1/2 2/2 1/4 1/2 2/5	<b>TOTAL</b> 0/3 1/1 1/2 5/5 3/4 2/11 1/4 2/9
---	--	--

## Shots by position



7m penalties	2/2	7m penalties	3/3
Fastbreak	4/4	Fastbreak	4/6
Breakthrough	4/7	Breakthrough	5/10
Long dist.	1/1	Long dist.	5/8

## Shooting statistics

Position	Goals	Sav.	Miss.	Post	Blk.	Total	%
Back (9m)	4	9	3	0	4	20	20
Line (6m)	3	2	1	1	0	7	43
Wing	3	1	2	1	0	7	43
7m penalties	2	0	0	0	0	2	100
Fastbreak	4	0	0	0	0	4	100
Breakthrough	4	3	0	0	0	7	57
<b>Total</b>	<b>20</b>	<b>15</b>	<b>6</b>	<b>2</b>	<b>4</b>	<b>47</b>	<b>43</b>

# Jersey number Tot. Total shooting 6m 6m (line) shooting 9m 9m shooting Wng Wing shooting FB Fastbreak sh. 7m 7m penalty sh.  
 Brk. Breakthrough sh. LD Long distance sh. As. Assists PC Pass clear chance E7 Earned 7m pen. TF Technical faults St. Steals  
 2m 2m punishments C7. Committed 7m E2 Earned 2m pun. YC. Yellow cards R/B Red/Blue cards Blk. Blocks S Starting Line-up



# 10th IHF Women's Youth World Championship 2024



Final Round, 29-32. place

Match Team Statistics

## Canada 21 - 31 Guinea

22.8.2024. 11:15

Match No. 93

(9 - 18) (12 - 13)

Attendance: 300

Vocational and Technical College

Referees: Agustin Conberse (ARG) / Santiago Correa (ARG)

### Guinea

Players		Goals / shots									Attack					Def.			Penalties			TP		
#	Surname and name	S	Tot.	%	9m	6m	Wing	7m	FB	Brk.	LD	As.	PC	E7	E2	TF	St.	C7	Blk	YC	2m		R	B
2	CAMARA Mabinty Delmaya	S	7/7	100		2/2		2/2	2/2	1/1		1	4	2	1	3	2				1			59:38
3	SYLLA N'nady	S	3/6	50		2/5					1/1						1	1	1		1		29:31	
4	SYLLA Hawa		0/4	0		0/1				0/2	0/1	2	1		1	5					1		29:45	
5	DIALLO Aissatou	S	5/7	71			3/3		1/1	1/3		1	2			3							26:29	
7	TOURE N'nankony		0/2	0			0/1		0/1														11:13	
8	KABA Aminata		0/2	0	0/1	0/1											1	1	1	2			31:00	
10	SYLLA Fatoumata		3/5	60	0/1	1/1			1/1	1/2		1	1			3	1						21:20	
11	KEITA Fatou	S										4				4	3		1				41:33	
12	SOUMAH Makhissa		2/2	100	2/2								1								1		15:40	
13	SIDIBE N'abintou	S	1/3	33			1/2				0/1	2		1	1	1							36:22	
14	CAMARA Mama Aissata		1/2	50			1/2																9:21	
15	DIALLO Mariama																							
16	CONTE M'mahawa	S	2/3	67							2/3												57:26	
17	KOUMBASSA Kadiatou	S	7/10	70	2/3		0/1	1/1	0/1	2/2	2/2	4				5	2				1		50:42	
22	RICHARD Aicha																							
Team / bench																								
UKUPNO			31/53	58	4/7	5/10	5/9	3/3	4/6	5/10	5/8	15	9	3	3	25	10	2	4	0	5	0	0	

Goalkeepers		Saves / shots								
#	Surname and name	Tot.	%	9m	6m	Wing	7m	FB	Brk.	LD
16	CONTE M'mahawa	15/35	43	9/13	2/5	1/4	0/2	0/4	3/7	
22	RICHARD Aicha									
TOTAL		15/35	43	9/13	2/5	1/4	0/2	1/4	3/7	0/0

Coach: Jean Louis Leblond

Number of attacks: 75, Efficiency: 41%, Average Duration: 23.21 seconds

### Attack by type of defense

	Shots	9m	6m	Wing	TF	E7	E2
On def. 6-0	9/13	2/3	3/4	3/4	7	2	3
On def. 5-1	10/22	2/4	2/5	2/5	13	1	0
On def. press.	0/1	0/0	0/1	0/0	5	0	0
Fastbreak	4/6				0	0	0

### Defense by type

	Total	9m	6m	Wing	Stl.	C7	2m
Def. 6-0	2/8	0/2	1/3	1/3	0	0	0
Def. 5-1	9/20	3/12	2/3	2/2	3	0	0
Def. 4-2	0/2	0/0	0/0	0/0	1	1	0
Def. 3-3	2/7	1/4	0/1	0/1	6	1	0
Def. press.	1/4	0/2	0/0	0/1	0	0	0
Fastbreak	4/4				0	0	5

### Attack with superiority / minority / goalkeeper out

	Attack				Reaction		
	Att.	Eff.	Shots	TF	FB	LD	Tot.
6 on 6 (GK out)	1	0%	0/0	1	0/0	1/1	1/1
5 on 6 (GK out)	1	0%	0/0	1	0/0	0/0	0/0
6 on 6	54	37%	20/35	19			
5 on 6	6	17%	1/3	3			
6 on 5 (GK out)	1	0%	0/0	1	0/0	0/0	0/0
6 on 5	11	91%	10/11	0			
5 on 5	1	0%	0/1	0			

Player superiority / GK out counted at the end of attack (in case it changes during attack)

### Defense with superiority / minority / goalkeeper out

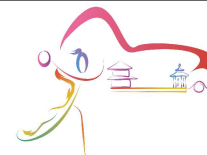
	Attack				Reaction		
	Att.	Eff.	Shots	TF	FB	LD	Tot.
7 on 6 (GK out)	28	29%	8/16	12	2/3	1/3	3/6
7 on 5 (GK out)	4	25%	1/3	1	0/0	0/1	0/1
7 on 4 (GK out)	2	0%	0/2	0	0/0	0/0	0/0
6 on 6 (GK out)	10	30%	3/4	6	0/0	4/4	4/4
6 on 6	27	30%	8/15	12			
6 on 5	2	50%	1/1	1			
6 on 4	1	0%	0/1	0			
5 on 6	2	0%	0/1	1			
5 on 5	1	0%	0/0	1			

Numbers show attacking numbers of opponent. Lower efficiency of opponent means better defense of this team

# Jersey number Tot. Total shooting 6m 6m (line) shooting 9m 9m shooting Wng Wing shooting FB Fastbreak sh. 7m 7m penalty sh.  
 Brk. Breakthrough sh. LD Long distance sh. As. Assists PC Pass clear chance E7 Earned 7m pen. TF Technical faults St. Steals  
 2m 2m punishments C7. Committed 7m E2 Earned 2m pun. YC. Yellow cards R/B Red/Blue cards Blk. Blocks S Starting Line-up



# 10th IHF Women's Youth World Championship 2024



Final Round, 29-32. place

## Match Team Statistics

Match No. 93

## Canada 21 - 31 Guinea

(9 - 18) (12 - 13)

22.8.2024. 11:15

Attendance: 300

Vocational and Technical College

Referees: Agustin Conberse (ARG) / Santiago Correa (ARG)

### Shot distribution by player

#### 2 M. Camara

1/1		
	1/1	5/5

#### 3 N. Sylla

		0/1
	0/1	1/2
1/1		1/1

#### 4 H. Sylla

	0/2	0/1

1 miss.

#### 5 A. Diallo

2/2		
1/1	0/1	
1/2		

1/1 lob

#### 7 N. Toure

0/1		0/1

#### 8 A. Kaba

		0/1

1 block

#### 10 F. Sylla

0/1		0/1
1/1	1/1	1/1

#### 11 F. Keita


#### 12 M. Soumah

1/1		1/1

#### 13 N. Sidibe

	0/1	
1/1		

1 miss.

#### 14 M. Camara

1/1		

1 post

#### 15 M. Diallo


#### 17 K. Koumbassa

	1/1	
3/3	1/2	2/2

1 post 1 miss.

#### TOTAL

3/3		0/1
1/2	1/6	1/4
9/11	3/4	10/12

2 post 3 miss. 1 block 1/1 lob

### Saves distribution goalkeepers

#### 16 M. Conte

0/3	3/3	2/3
	3/3	0/2
3/10	2/2	2/9

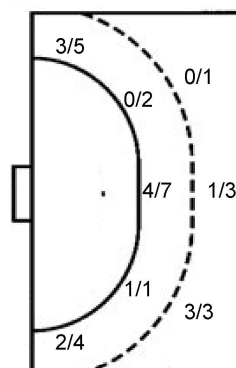
#### 22 A. Richard


#### TOTAL

0/3	3/3	2/3
	3/3	0/2
3/10	2/2	2/9

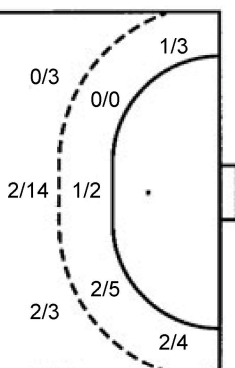
### Shots by position

#### ATTACK



7m penalties	3/3
Fastbreak	4/6
Breakthrough	5/10
Long dist.	5/8

#### DEFENSE



7m penalties	2/2
Fastbreak	4/4
Breakthrough	4/7
Long dist.	1/1

### Shooting statistics

Position	Goals	Sav.	Miss.	Post	Blk.	Total	%
Back (9m)	4	1	1	0	1	7	57
Line (6m)	5	5	0	0	0	10	50
Wing	5	3	0	1	0	9	56
7m penalties	3	0	0	0	0	3	100
Fastbreak	4	1	0	1	0	6	67
Breakthrough	5	5	0	0	0	10	50
<b>Total</b>	<b>26</b>	<b>15</b>	<b>1</b>	<b>2</b>	<b>1</b>	<b>45</b>	<b>58</b>

# Jersey number Tot. Total shooting 6m 6m (line) shooting 9m 9m shooting Wng Wing shooting FB Fastbreak sh. 7m 7m penalty sh.  
 Brk. Breakthrough sh. LD Long distance sh. As. Assists PC Pass clear chance E7 Earned 7m pen. TF Technical faults St. Steals  
 2m 2m punishments C7. Committed 7m E2 Earned 2m pun. YC. Yellow cards R/B Red/Blue cards Blk. Blocks S Starting Line-up

Handball statistics and livescore by Toma-soft ltd (www.toma-soft.hr)

