



10th IHF Women's Youth World Championship 2024



Final Round, Quarterfinals

Match Team Statistics

Spain 32 - 23 Japan

22.8.2024. 20:45

Match No. 92

(17 - 11) (15 - 12)

Attendance: 500

Olympic Sports Center

Referees: Maali Nawaf Alenezi (KUW) / Dalal Alnaseem (KUW)

Spain

#	Surname and name	S	Goals / shots								Attack					Def.			Penalties				TP			
			Tot.	%	9m	6m	Wing	7m	FB	Brk.	LD	As.	PC	E7	E2	TF	St.	C7	Blk	YC	2m	R		B		
1	GASSAMA CISSOKHO Goundo	S																								52:23
2	ROS QUESADA Anna																									3:41
3	FONKENG MFOTIOG Kelly Nnonzie	S	2/4	50		2/4											1	2							46:41	
4	ARRUABARRENA GAZTANAZPI Libe		2/2	100		1/1					1/1								1							6:32
5	RODRIGUEZ SARASOLA Estixu	S	4/6	67		0/1			0/1	1/1	3/3				3	1	2								42:59	
6	REGORDAN SILVA Marta	S	7/9	78	0/1	1/1			1/1		5/6				2		1								39:59	
7	RODRIGUEZ LARIO Belen	S	7/11	64		0/1	1/1		0/1	6/8					2			4	4						31:06	
8	JALLOW DIALLO Kadidiatou		0/1	0		0/1																			11:15	
9	SOLIS RODRIGUEZ Nayra	S	3/3	100					2/2	1/1															44:06	
10	PATINO LIMES Nerea		1/2	50					1/1	0/1					1	1							2		32:06	
11	TORRES CABELLO Elena	S	2/3	67		1/2			1/1													1			31:23	
12	BERNABE COBOS Udane																								6:39	
15	GARCIA SANCHEZ Celia		2/3	67		1/2				1/1							1			1			1		34:24	
17	BAQUEDANO MEZQUIRIZ Naroa		2/4	50					1/1	1/3					1					1	2				18:37	
18	GONZALEZ MARTINEZ Judit																			1						2:25
19	PALANQUÉS MARTORELL Sara		0/3	0		0/1	0/2													1						15:44
Team / bench																										
TOTAL			32/51	63	0/1	4/10	3/7	3/4	4/5	18/24	0/0	9	2	4	0	12	6	2	6	0	1	0	0			

#	Surname and name	Saves / shots									
		Tot.	%	9m	6m	Wing	7m	FB	Brk.	LD	
1	GASSAMA CISSOKHO Goundo	9/28	32	2/2	2/9	2/5		2/6	1/6		
12	BERNABE COBOS Udane	0/4	0	0/1	0/1		0/2				
TOTAL		9/32	28	2/3	2/10	2/5	0/2	2/6	1/6	0/0	

Coach: Cristina Cabeza Gutierrez

Number of attacks: 62, Efficiency: 52%, Average Duration: 33.02 seconds

Attack by type of defense

	Shots	9m	6m	Wing	TF	E7	E2
On def. 6-0	19/31	0/1	4/7	3/6	9	4	0
On def. 3-2-1	1/2	0/0	0/1	0/0	0	0	0
On def. 3-3	5/9	0/0	0/2	0/1	3	0	0
Fastbreak	4/5				0	0	0

Defense by type

	Total	9m	6m	Wing	Stl.	C7	2m
Def. 6-0	17/36	1/7	8/15	3/5	6	2	0
Fastbreak	4/6				0	0	1

Attack with superiority / minority / goalkeeper out

	Attack				Reaction		
	Att.	Eff.	Shots	TF	FB	LD	Tot.
6 on 6 (GK out)	2	100%	2/2	0	0/0	0/0	0/0
6 on 6	60	50%	30/48	12			

Player superiority / GK out counted at the end of attack (in case it changes during attack)

Defense with superiority / minority / goalkeeper out

	Attack				Reaction		
	Att.	Eff.	Shots	TF	FB	LD	Tot.
7 on 6 (GK out)	1	0%	0/0	1	0/0	0/0	0/0
6 on 6	60	35%	21/40	20			
6 on 5	2	100%	2/2	0			

Numbers show attacking numbers of opponent. Lower efficiency of opponent means better defense of this team

Jersey number Tot. Total shooting 6m 6m (line) shooting 9m 9m shooting Wng Wing shooting FB Fastbreak sh. 7m 7m penalty sh.
 Brk. Breakthrough sh. LD Long distance sh. As. Assists PC Pass clear chance E7 Earned 7m pen. TF Technical faults St. Steals
 2m 2m punishments C7. Committed 7m E2 Earned 2m pun. YC. Yellow cards R/B Red/Blue cards Blk. Blocks S Starting Line-up

Handball statistics and livescore by Toma-soft ltd (www.toma-soft.hr)



10th IHF Women's Youth World Championship 2024



Final Round, Quarterfinals

Match Team Statistics

Match No. 92

Spain 32 - 23 Japan

(17 - 11) (15 - 12)

22.8.2024. 20:45

Attendance: 500

Olympic Sports Center

Referees: Maali Nawaf Alenezi (KUW) / Dalal Alnaseem (KUW)

Shot distribution by player

2 A. Ros Quesada

3 K. Fonkeng Mfotio

1/2		1/1

1 miss.

4 L. Arruabarrena Gaztanazpi

	1/1	

1/1

5 E. Rodriguez Sarasola

1/1	1/1	1/1
0/1		
1/1		

1 miss.

6 M. Regordan Silva

2/2		
	0/1	
3/3	0/1	2/2

7 B. Rodriguez Lario

2/2		1/1
3/4		1/2

0/2 lob

8 K. Jallow Diallo

		0/1

9 N. Solis Rodriguez

1/1		
		1/1

1/1 lob

10 N. Patino Limes

		1/1

1 post

11 E. Torres Cabello

1/1		1/1
	0/1	

0/1

15 C. Garcia Sanchez

		0/1
		1/1

1/1 lob

17 N. Baquedano Mezquiriz

1/1		1/2

1 post

18 J. Gonzalez Martinez

19 S. Palanqués Martorell

	0/1	
0/1		

1 miss.

TOTAL

6/7	2/3	3/4
2/4	0/1	2/3
8/9	1/3	6/8

2 post 3 miss. 2/4 lob

Saves distribution goalkeepers

1 G. Gassama Cissokho

1/4	0/1	2/6
0/1		1/1
2/6	0/2	3/7

12 U. Bernabe Cobos

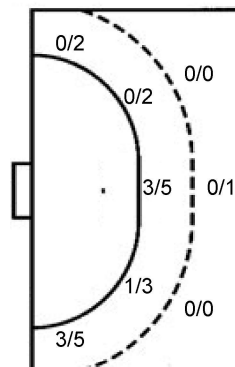
		0/1
0/1		
0/2		

TOTAL

1/4	0/1	2/7
0/2		1/1
2/8	0/2	3/7

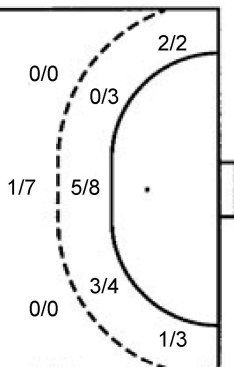
Shots by position

ATTACK



7m penalties 3/4
Fastbreak 4/5
Breakthrough 18/24
Long dist. 0/0

DEFENSE



7m penalties 2/2
Fastbreak 4/6
Breakthrough 5/9
Long dist. 0/0

Shooting statistics

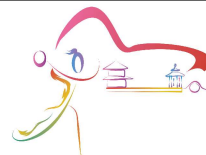
Position	Goals	Sav.	Miss.	Post	Blk.	Total	%
Back (9m)	0	1	0	0	0	1	0
Line (6m)	4	4	2	0	0	10	40
Wing	3	3	1	0	0	7	43
7m penalties	3	1	0	0	0	4	75
Fastbreak	4	1	0	0	0	5	80
Breakthrough	18	4	0	2	0	24	75
Total	32	14	3	2	0	51	63

Jersey number Tot. Total shooting 6m 6m (line) shooting 9m 9m shooting Wng Wing shooting FB Fastbreak sh. 7m 7m penalty sh.
Brk. Breakthrough sh. LD Long distance sh. As. Assists PC Pass clear chance E7 Earned 7m pen. TF Technical faults St. Steals
2m 2m punishments C7. Committed 7m E2 Earned 2m pun. YC. Yellow cards R/B Red/Blue cards Blk. Blocks S Starting Line-up

Handball statistics and livescore by Toma-soft ltd (www.toma-soft.hr)



10th IHF Women's Youth World Championship 2024



Final Round, Quarterfinals

Match Team Statistics

Match No. 92

Spain 32 - 23 Japan

(17 - 11) (15 - 12)

22.8.2024. 20:45

Attendance: 500

Olympic Sports Center

Referees: Maali Nawaf Alenezi (KUW) / Dalal Alnaseem (KUW)

Japan

Players		Goals / shots									Attack					Def.			Penalties				TP		
#	Surname and name	S	Tot.	%	9m	6m	Wing	7m	FB	Brk.	LD	As.	PC	E7	E2	TF	St.	C7	Blk	YC	2m	R		B	
1	FUJIWARA Hirari	S																							20:56
2	YASUGAHIRA Yui	S	3/8	38	0/1	2/4				1/3		1		1	1	3									35:17
4	HIKIDA Ayaka															1									
5	OYAMA Sarina																								8:00
6	SAMO Haruhi																								
10	MATSUMOTO Yume	S	6/9	67	0/1	3/4		2/2		1/2		4	1			5	1								55:37
11	KAWAKAMI Arisa	S	4/6	67			1/3		3/3							1		1							51:12
12	OSAKI Hana																								8:38
14	NAKAMURA Mami	S	4/13	31	0/3	1/5			0/1	3/4		1		1		2									43:30
16	SEKIGUCHI Karen																								29:34
17	ABE Kaede																								5:40
18	KIO Jurina	S	3/4	75			2/2		1/2			1				1	1	1							60:00
19	MURAMATSU Miku		1/1	100	1/1											2									3:09
23	NAKAO Ai	S	1/1	100		1/1							1			1		2							53:11
24	TAKAHASHI Aoi		0/1	0	0/1											4									10:20
25	KATO Mao		1/1	100		1/1										1									34:56
	Team / bench																								
	TOTAL		23/44	52	1/7	8/15	3/5	2/2	4/6	5/9	0/0	7	2	2	1	21	2	4	0	0	0	0	0	0	

Goalkeepers		Saves / shots								
#	Surname and name	Tot.	%	9m	6m	Wing	7m	FB	Brk.	LD
1	FUJIWARA Hirari	4/13	31		1/3	1/2	0/1	0/1	2/6	
12	OSAKI Hana	3/8	38			1/1	1/2		1/5	
16	SEKIGUCHI Karen	7/25	28	1/1	3/5	1/3	0/1	1/4	1/11	
	TOTAL	14/46	30	1/1	4/8	3/6	1/4	3/5	4/22	0/0

Coach: So Hee Jang

Number of attacks: 63, Efficiency: 37%, Average Duration: 24.92 seconds

Attack by type of defense

	Shots	9m	6m	Wing	TF	E7	E2
On def. 6-0	17/36	1/7	8/15	3/5	21	2	1
Fastbreak	4/6				0	0	0

Defense by type

	Total	9m	6m	Wing	Stl.	C7	2m
Def. 6-0	19/31	0/1	4/7	3/6	1	4	0
Def. 3-2-1	1/2	0/0	0/1	0/0	0	0	0
Def. 3-3	5/9	0/0	0/2	0/1	1	0	0
Fastbreak	4/5				0	0	0

Attack with superiority / minority / goalkeeper out

	Attack				Reaction		
	Att.	Eff.	Shots	TF	FB	LD	Tot.
7 on 6 (GK out)	1	0%	0/0	1	0/0	0/0	0/0
6 on 6	60	35%	21/40	20			
6 on 5	2	100%	2/2	0			

Player superiority / GK out counted at the end of attack (in case it changes during attack)

Defense with superiority / minority / goalkeeper out

	Attack				Reaction		
	Att.	Eff.	Shots	TF	FB	LD	Tot.
6 on 6 (GK out)	2	100%	2/2	0	0/0	0/0	0/0
6 on 6	60	50%	30/48	12			

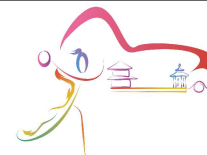
Numbers show attacking numbers of opponent. Lower efficiency of opponent means better defense of this team

Jersey number Tot. Total shooting 6m 6m (line) shooting 9m 9m shooting Wng Wing shooting FB Fastbreak sh. 7m 7m penalty sh.
 Brk. Breakthrough sh. LD Long distance sh. As. Assists PC Pass clear chance E7 Earned 7m pen. TF Technical faults St. Steals
 2m 2m punishments C7. Committed 7m E2 Earned 2m pun. YC. Yellow cards R/B Red/Blue cards Blk. Blocks S Starting Line-up

Handball statistics and livescore by Toma-soft ltd (www.toma-soft.hr)



10th IHF Women's Youth World Championship 2024



Final Round, Quarterfinals

Match Team Statistics

Match No. 92

Spain 32 - 23 Japan

(17 - 11) (15 - 12)

22.8.2024. 20:45

Attendance: 500

Olympic Sports Center

Referees: Maali Nawaf Alenezi (KUW) / Dalal Alnaseem (KUW)

Shot distribution by player

2 Y. Yasugahira

		1/1
1/1		1/2

1 post 3 miss.

4 A. Hikida

5 S. Oyama

6 H. Samo

10 Y. Matsumoto

1/1		2/2
1/1		
2/3		

2 block

11 A. Kawakami

	1/1	0/1
		0/1
1/1	1/1	1/1

14 M. Nakamura

		1/2
1/2	1/1	1/2

2 miss. 4 block

17 K. Abe

18 J. Kio

1/2		
1/1		
		1/1

19 M. Muramatsu

1/1		

23 A. Nakao

		1/1

24 A. Takahashi

		0/1

25 M. Kato

1/1		

TOTAL

3/4	1/1	5/7
2/2		0/1
6/8	2/2	4/7

1 post 5 miss. 6 block

Saves distribution goalkeepers

1 H. Fujiwara

0/2	1/3	
1/2		0/1
0/1		1/3

12 H. Osaki

0/1		
1/1		1/1
1/3		0/2

16 K. Sekiguchi

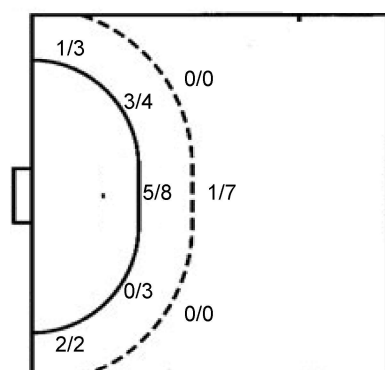
1/4		1/4
0/1	1/1	0/1
0/5	2/3	1/3

TOTAL

1/7	1/3	1/4
2/4	1/1	1/3
1/9	2/3	2/8

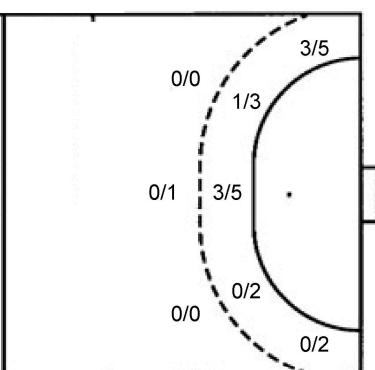
Shots by position

ATTACK



7m penalties 2/2
Fastbreak 4/6
Breakthrough 5/9
Long dist. 0/0

DEFENSE



7m penalties 3/4
Fastbreak 4/5
Breakthrough 18/24
Long dist. 0/0

Shooting statistics

Position	Goals	Sav.	Miss.	Post	Blk.	Total	%
Back (9m)	1	2	1	0	3	7	14
Line (6m)	8	2	1	1	3	15	53
Wing	3	2	0	0	0	5	60
7m penalties	2	0	0	0	0	2	100
Fastbreak	4	2	0	0	0	6	67
Breakthrough	5	1	3	0	0	9	56
Total	23	9	5	1	6	44	52

Jersey number Tot. Total shooting 6m 6m (line) shooting 9m 9m shooting Wng Wing shooting FB Fastbreak sh. 7m 7m penalty sh.
Brk. Breakthrough sh. LD Long distance sh. As. Assists PC Pass clear chance E7 Earned 7m pen. TF Technical faults St. Steals
2m 2m punishments C7. Committed 7m E2 Earned 2m pun. YC. Yellow cards R/B Red/Blue cards Blk. Blocks S Starting Line-up

Handball statistics and livescore by Toma-soft ltd (www.toma-soft.hr)



10th IHF Women's Youth World Championship 2024



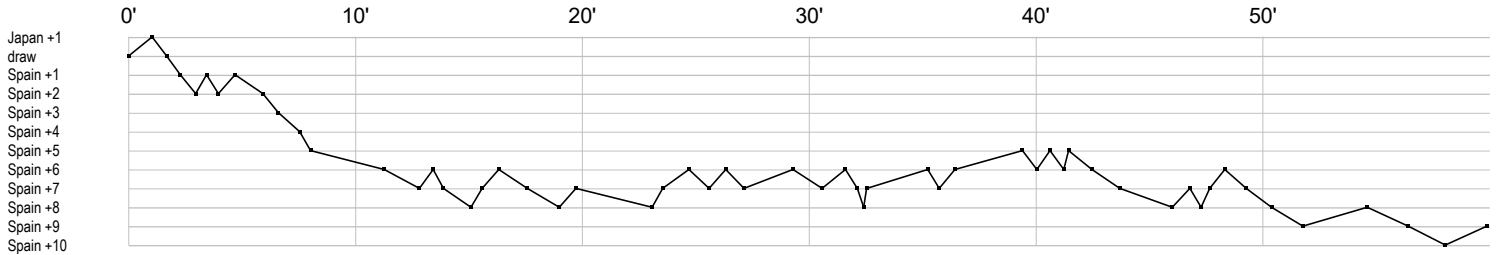
Final Round, Quarterfinals

Match Team Statistics
Match No. 92

Spain 32 - 23 Japan
(17 - 11) (15 - 12)

22.8.2024. 20:45
Attendance: 500
Olympic Sports Center

Referees: Maali Nawaf Alenezi (KUW) / Dalal Alnaseem (KUW)



Spain

1 Gassama	r s sr	s	r r r	r s s r r r s s r	r r s r r s	r r	r r r
2 Ros Quesada							
3 Fonkeng	c g	f f			g	x x	
4 Arruabarrena		g x					g
5 Rodriguez	g	a a p t			g f	ef t	g a g t e
6 Regordan	g	a g		f g g	g f a	g	g e
7 Rodriguez	g g f	ba gb t	t g		g t ba t bf f	g	f g
8 Jallow Diallo							
9 Solís	g	g				g	
10 Patino Limes			p a	t f			g x x
11 Torres	g	f g				x	
12 Bernabe	r					r	r
15 Garcia				g e t		2c	f g
17 Baquedano			g ft				f b b g a
18 Gonzalez							t
19 Palanqués			t f				f f

Japan

1 Fujiwara H	r r r r s r r r						s s s r r
2 Yasugahira Y	f g	t f t f	t		a	ie g	f f g
4 Hikida A					t		
5 Oyama S							
6 Samo H							
10 Matsumoto Y	g	a g	b p	g t	tg f t g t g	a f f t a a	
11 Kawakami A		g g	f ft c	g		g	
12 Osaki H					s		s r s r r r r
14 Nakamura M	f e t	f f		g g g f f		g	f a f f t f
16 Sekiguchi K		r s	r r r r s r r	r s r r	s r r r s r s	s r r r r	
17 Abe K							
18 Kio J	g	t bf	a		c	g	g
19 Muramatsu M							t t t
23 Nakao A		t	g	p			c c t
24 Takahashi A	t t		t	f			t
25 Kato M						g	t

In game	g Goal scored	f Missed shot	a Assist	t Technical faults	b Steal
2 2min suspension	e Earned 7m	c Committed 7m	y Yellow card	r Red Card	k Blue card
i Earned 2min.	x Block	4 4min suspension	p Pass for clear chance	s Saved shot	r Received goal