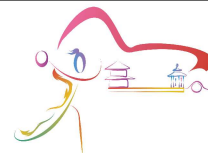




10th IHF Women's Youth World Championship 2024



Final Round, 13-16. place

Match Team Statistics

Match No. 89

Sweden 33 - 27 P.R. of China

(17 - 11) (16 - 16)

22.8.2024. 15:45

Attendance: 2005

International Handball Hall

Referees: Ismailj Metalari (MKD) / Nenad Nikolovski (MKD)

Sweden

Players		Goals / shots									Attack					Def.			Penalties				TP		
#	Surname and name	S	Tot.	%	9m	6m	Wing	7m	FB	Brk.	LD	As.	PC	E7	E2	TF	St.	C7	Blk	YC	2m	R		B	
1	MELIN Mathilda																								35:19
2	KINDAHL Linnéa		2/5	40		1/1	1/1		0/2	0/1		1													44:53
3	SVENSSON Moa	S	2/5	40			1/4			1/1		4	2			2	1	1							44:53
6	HUSELIUS Nova	S	5/7	71		1/1		3/4		1/2		3	3			6									25:47
8	BERGLUND Julia	S	1/1	100			1/1																		16:11
9	NORRGÅRD Meja		3/3	100	1/1		1/1			1/1							1								40:21
10	LÖF Astrid	S	4/6	67	1/2					3/4			2	1	1	1	1								20:34
11	MIELKE Cassandra		4/8	50	2/6					2/2		3			1	1		1				2			58:17
12	SAUL Wilma	S																							18:55
15	LINDBERG Isa	S	0/2	0	0/2							1	1												31:09
16	DANIELSSON Anna																								28:51
17	PORTILLO Maja	S	3/4	75		2/3			1/1			1										1			24:35
18	RYDÉN Isabelle		2/4	50		2/4								2			1								30:15
32	LILJA Smilla		3/5	60	2/3				0/1	1/1						2		1							
33	JOHANSSON Thella		4/4	100		1/1	3/3						2												
Team / bench																									
UKUPNO			33/54	61	6/14	7/10	7/10	3/4	1/4	9/12	0/0	13	10	3	2	12	4	3	0	1	2	0	0		

Goalkeepers		Saves / shots								
#	Surname and name	Tot.	%	9m	6m	Wing	7m	FB	Brk.	LD
1	MELIN Mathilda									
12	SAUL Wilma	20/47	43	5/10	1/9	4/12	2/3	2/4	6/9	
16	DANIELSSON Anna									
TOTAL		20/47	43	5/10	1/9	4/12	2/3	2/4	6/9	0/0

Coach: Frenne Baverud

Number of attacks: 63, Efficiency: 52%, Average Duration: 25.36 seconds

Attack by type of defense

	Shots	9m	6m	Wing	TF	E7	E2
On def. 6-0	9/17	2/8	2/3	1/1	2	2	1
On def. 5-1	16/23	4/6	3/5	5/7	8	1	1
On def. 3-3	4/6	0/0	2/2	1/2	2	0	0
Fastbreak	1/4				0	0	0

Defense by type

	Total	9m	6m	Wing	Stl.	C7	2m
Def. 6-0	24/42	5/11	8/9	8/13	4	3	0
Fastbreak	2/4				0	0	2

Attack with superiority / minority / goalkeeper out

	Attack				Reaction		
	Att.	Eff.	Shots	TF	FB	LD	Tot.
7 on 6 (GK out)	2	100%	2/2	0	0/0	0/0	0/0
6 on 6 (GK out)	2	0%	0/1	1	0/0	0/0	0/0
6 on 6	53	53%	28/43	10			
6 on 5	4	25%	1/3	1			
6 on 4	1	100%	1/1	0			
5 on 6	1	100%	1/1	0			

Player superiority / GK out counted at the end of attack (in case it changes during attack)

Defense with superiority / minority / goalkeeper out

	Attack				Reaction		
	Att.	Eff.	Shots	TF	FB	LD	Tot.
7 on 6 (GK out)	10	70%	7/9	1	0/0	0/0	0/0
6 on 6 (GK out)	3	0%	0/2	1	0/0	0/0	0/0
6 on 6	42	43%	18/30	12			
5 on 6	2	50%	1/2	0			
7 on 5 (GK out)	1	0%	0/1	0	0/0	0/0	0/0
6 on 5	4	25%	1/2	2			

Numbers show attacking numbers of opponent. Lower efficiency of opponent means better defense of this team

Jersey number Tot. Total shooting 6m 6m (line) shooting 9m 9m shooting Wng Wing shooting FB Fastbreak sh. 7m 7m penalty sh.
 Brk. Breakthrough sh. LD Long distance sh. As. Assists PC Pass clear chance E7 Earned 7m pen. TF Technical faults St. Steals
 2m 2m punishments C7. Committed 7m E2 Earned 2m pun. YC. Yellow cards R/B Red/Blue cards Blk. Blocks S Starting Line-up



10th IHF Women's Youth World Championship 2024



Final Round, 13-16. place

Match Team Statistics

Match No. 89

Sweden 33 - 27 P.R. of China

(17 - 11) (16 - 16)

22.8.2024. 15:45

Attendance: 2005

International Handball Hall

Referees: Ismailj Metalari (MKD) / Nenad Nikolovski (MKD)

Shot distribution by player

2 L. Kindahl

0/1		
		0/1
		2/2

1 post

3 M. Svensson

0/1	1/1	
1/1		

1 post 1 miss.

6 N. Huselius

		1/1
2/3	1/1	1/1

1 post

8 J. Berglund

1/1		

2 miss.

9 M. Norrgard

		2/2
1/1		

10 A. Löf

1/1		1/1
1/2		
1/2		

11 C. Mielke

1/1		
		3/5

2 post

15 I. Lindberg

1 post 1 miss.

17 M. Portillo

0/1		
1/1		2/2

18 I. Rydén

1/3		1/1

32 S. Lilja

1/1		
		1/1
	1/1	

2 miss.

33 T. Johansson

1/1		3/3

TOTAL

4/6	1/1	3/3
1/3		2/3
8/12	2/2	12/14

6 post 4 miss.

Saves distribution goalkeepers

1 M. Melin

12 W. Saul

1/4	2/2	0/1
4/5	3/3	1/1
6/13	0/3	1/9

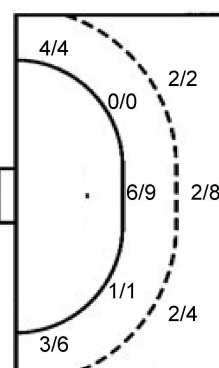
16 A. Danielsson

TOTAL

1/4	2/2	0/1
4/5	3/3	1/1
6/13	0/3	1/9

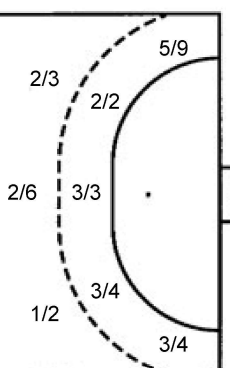
Shots by position

ATTACK



7m penalties	3/4
Fastbreak	1/4
Breakthrough	9/12
Long dist.	0/0

DEFENSE



7m penalties	1/3
Fastbreak	2/4
Breakthrough	3/9
Long dist.	0/0

Shooting statistics

Position	Goals	Sav.	Miss.	Post	Blk.	Total	%
Back (9m)	6	3	2	3	0	14	43
Line (6m)	7	3	0	0	0	10	70
Wing	7	1	1	1	0	10	70
7m penalties	3	1	0	0	0	4	75
Fastbreak	1	2	1	0	0	4	25
Breakthrough	9	1	0	2	0	12	75
Total	33	11	4	6	0	54	61

Jersey number Tot. Total shooting 6m 6m (line) shooting 9m 9m shooting Wng Wing shooting FB Fastbreak sh. 7m 7m penalty sh.
 Brk. Breakthrough sh. LD Long distance sh. As. Assists PC Pass clear chance E7 Earned 7m pen. TF Technical faults St. Steals
 2m 2m punishments C7. Committed 7m E2 Earned 2m pun. YC. Yellow cards R/B Red/Blue cards Blk. Blocks S Starting Line-up

Handball statistics and livescore by Toma-soft ltd (www.toma-soft.hr)



10th IHF Women's Youth World Championship 2024



Final Round, 13-16. place

Match Team Statistics

Match No. 89

Sweden 33 - 27 P.R. of China

(17 - 11) (16 - 16)

22.8.2024. 15:45

Attendance: 2005

International Handball Hall

Referees: Ismailj Metalari (MKD) / Nenad Nikolovski (MKD)

P.R. of China

Players		Goals / shots									Attack					Def.			Penalties			TP			
#	Surname and name	S	Tot.	%	9m	6m	Wing	7m	FB	Brk.	LD	As.	PC	E7	E2	TF	St.	C7	Blk	YC	2m		R	B	
1	SUN Yihan	S																							53:38
2	HU Jiabin		0/1	0			0/1																		11:49
3	PAN Fengying	S	2/7	29	1/1	1/1		0/1	0/1	0/3		6	1			4	3								46:51
5	HUANG Zidie		6/12	50			5/8	0/1	1/2	0/1						1	2								49:33
6	ZHANG Jingwen															1	1								12:15
8	LIANG Jing	S	3/6	50	2/4	1/1				0/1		2	2	1		2	1								35:23
9	XIN Ying	S	3/3	100			3/3					3													24:53
10	LI Xinyi		2/4	50	0/1	1/1		1/1		0/1						1									9:22
11	YANG Jie	S	2/3	67		1/1	0/1			1/1															29:22
15	YANG Yue	S	2/2	100		2/2									1	3		2			1				45:06
16	HUANG Sitong																					1			2:48
17	LIU Yutong															1									2:48
18	ZHANG Jiarui		2/3	67	2/3							1		1	1	2		1							13:29
19	LI Ziai		2/2	100		1/1			1/1													1			29:01
21	XING Ziyun	S	3/6	50	0/2	1/2				2/2		3		1		1									37:42
23	ZHENG Yun																								16:00
Team / bench																									
UKUPNO			27/49	55	5/11	8/9	8/13	1/3	2/4	3/9	0/0	15	3	3	2	16	7	3	0	0	2	1	0		

Goalkeepers		Saves / shots								
#	Surname and name	Tot.	%	9m	6m	Wing	7m	FB	Brk.	LD
1	SUN Yihan	9/41	22	3/9	2/9	1/8	1/3	2/3	0/9	
16	HUANG Sitong	2/3	67		1/1		0/1		1/1	
TOTAL		11/44	25	3/9	3/10	1/8	1/4	4/3	1/10	0/0

Coach: Qiang Shen

Number of attacks: 62, Efficiency: 44%, Average Duration: 32.21 seconds

Attack by type of defense

	Shots	9m	6m	Wing	TF	E7	E2
On def. 6-0	24/42	5/11	8/9	8/13	16	3	2
Fastbreak	2/4				0	0	0

Defense by type

	Total	9m	6m	Wing	Stl.	C7	2m
Def. 6-0	9/17	2/8	2/3	1/1	2	2	0
Def. 5-1	16/23	4/6	3/5	5/7	5	1	0
Def. 3-3	4/6	0/0	2/2	1/2	0	0	0
Fastbreak	1/4				0	0	2

Attack with superiority / minority / goalkeeper out

	Attack				Reaction		
	Att.	Eff.	Shots	TF	FB	LD	Tot.
7 on 6 (GK out)	10	70%	7/9	1	0/0	0/0	0/0
6 on 6 (GK out)	3	0%	0/2	1	0/0	0/0	0/0
6 on 6	42	43%	18/30	12			
5 on 6	2	50%	1/2	0			
7 on 5 (GK out)	1	0%	0/1	0	0/0	0/0	0/0
6 on 5	4	25%	1/2	2			

Player superiority / GK out counted at the end of attack (in case it changes during attack)

Defense with superiority / minority / goalkeeper out

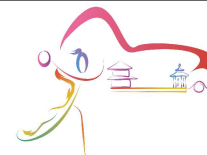
	Attack				Reaction		
	Att.	Eff.	Shots	TF	FB	LD	Tot.
7 on 6 (GK out)	2	100%	2/2	0	0/0	0/0	0/0
6 on 6 (GK out)	2	0%	0/1	1	0/0	0/0	0/0
6 on 6	53	53%	28/43	10			
6 on 5	4	25%	1/3	1			
6 on 4	1	100%	1/1	0			
5 on 6	1	100%	1/1	0			

Numbers show attacking numbers of opponent. Lower efficiency of opponent means better defense of this team

Jersey number Tot. Total shooting 6m 6m (line) shooting 9m 9m shooting Wng Wing shooting FB Fastbreak sh. 7m 7m penalty sh.
 Brk. Breakthrough sh. LD Long distance sh. As. Assists PC Pass clear chance E7 Earned 7m pen. TF Technical faults St. Steals
 2m 2m punishments C7. Committed 7m E2 Earned 2m pun. YC. Yellow cards R/B Red/Blue cards Blk. Blocks S Starting Line-up



10th IHF Women's Youth World Championship 2024



Final Round, 13-16. place

Match Team Statistics

Match No. 89

Sweden 33 - 27 P.R. of China

(17 - 11) (16 - 16)

22.8.2024. 15:45

Attendance: 2005

International Handball Hall

Referees: Ismailj Metalari (MKD) / Nenad Nikolovski (MKD)

Shot distribution by player

2 J. Hu

0/1		

3 F. Pan

		1/1
0/2		
1/3		

0/1 lob

5 Z. Huang

	0/1	
		0/1
3/4	1/1	1/2

1 miss. 1/2 lob

6 J. Zhang

8 J. Liang

	0/1	
0/1	1/1	1/1

1 block 1/1 lob

9 Y. Xin

		1/1

2/2 lob

10 X. Li

0/1		
2/3		

11 J. Yang

2/2		
	0/1	

15 Y. Yang

1/1		
1/1		

17 Y. Liu

18 J. Zhang

1/2		
	1/1	

19 Z. Li

		2/2

21 Z. Xing

	0/1	
0/1	0/1	
		3/3

23 Y. Zheng

TOTAL

3/4	0/2	1/1
1/5	0/3	0/1
7/13	3/3	8/9

1 miss. 1 block 4/6 lob

Saves distribution goalkeepers

1 Y. Sun

2/6	0/1	0/3
1/2		1/3
3/10	0/2	2/14

16 S. Huang

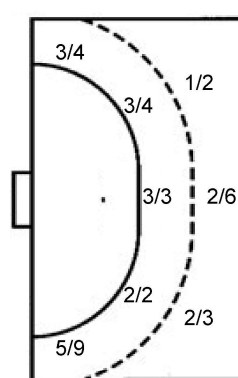
1/1		
1/2		

TOTAL

2/6	0/1	0/3
2/3		1/3
4/12	0/2	2/14

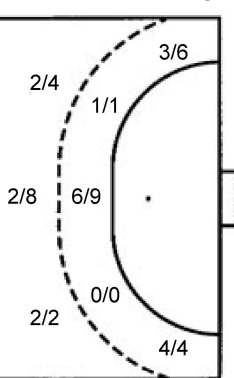
Shots by position

ATTACK



7m penalties 1/3
Fastbreak 2/4
Breakthrough 3/9
Long dist. 0/0

DEFENSE



7m penalties 3/4
Fastbreak 1/4
Breakthrough 9/12
Long dist. 0/0

Shooting statistics

Position	Goals	Sav.	Miss.	Post	Blk.	Total	%
Back (9m)	5	5	0	0	1	11	45
Line (6m)	8	1	0	0	0	9	89
Wing	8	4	1	0	0	13	62
7m penalties	1	2	0	0	0	3	33
Fastbreak	2	2	0	0	0	4	50
Breakthrough	3	6	0	0	0	9	33
Total	27	20	1	0	1	49	55

Jersey number Tot. Total shooting 6m 6m (line) shooting 9m 9m shooting Wng Wing shooting FB Fastbreak sh. 7m 7m penalty sh.
Brk. Breakthrough sh. LD Long distance sh. As. Assists PC Pass clear chance E7 Earned 7m pen. TF Technical faults St. Steals
2m 2m punishments C7. Committed 7m E2 Earned 2m pun. YC. Yellow cards R/B Red/Blue cards Blk. Blocks S Starting Line-up

Handball statistics and livescore by Toma-soft ltd (www.toma-soft.hr)

