



# 10th IHF Women's Youth World Championship 2024



Final Round, 9-12. place

## Match Team Statistics

Match No. 84

## Brazil 24 - 25 Czechia

(16 - 13) (8 - 12)

22.8.2024. 15:45

Attendance: 200

Olympic Sports Center

Referees: Mohamed El Gahss (MAR) / Zakaria El Malwane (MAR)

### Brazil

#	Surname and name	S	Goals / shots								Attack				Def.			Penalties				TP										
			Tot.	%	9m	6m	Wing	7m	FB	Brk.	LD	As.	PC	E7	E2	TF	St.	C7	Blk	YC	2m		R	B								
2	DOS SANTOS GOMES Júlia Vitória		2/3	67	2/3										1																	13:40
5	GONÇALVES NUNES Ana Karolina		4/5	80		1/1	3/3										1														30:07	
6	MONTEIRO DA SILVA Jisseli Isadora	S	2/4	50		1/1	1/3																								29:39	
8	KOZAR DOVIGO Maria Luiza		0/2	0			0/2																								24:02	
9	DA SILVA VITOR Lauendy Vitória		3/3	100				1/1		1/1	1/1																				12:27	
11	SANTOS DE SOUSA Joyce		3/3	100	3/3								1																		12:10	
13	GRASSMANN FÚCULO Letícia	S	4/6	67	1/3									1																	41:39	
16	DE SOUZA ARAÚJO ROCHA Mellysse																														0:58	
17	RODRIGUES SOARES Beatriz	S	2/2	100		2/2																									38:12	
18	SOUZA Andressa	S	1/2	50	0/1																										26:07	
20	TEIXEIRA DE CASTRO Nhauany	S	0/3	0		0/1	0/2									1	1	1	1												29:52	
23	VAN LIESHOUT Sofia		1/1	100																											21:54	
25	CARDOSO BRANDAO LADEIA Raquel	S	2/8	25	1/4																										35:19	
27	LUDWIG KIELING Sophia	S																													54:31	
28	FLORES DA SILVA PEREIRA Luana																														36:57	
77	LESSA BARROS E SILVA Giulia																														12:26	
	Team / bench																															
	UKUPNO		24/42	57	7/14	4/5	4/10	1/1	0/0	7/11	1/1			2	1	1	2	31	4	5	0	0	4	0	0							

Goalkeepers		Saves / shots								
#	Surname and name	Tot.	%	9m	6m	Wing	7m	FB	Brk.	LD
16	DE SOUZA ARAÚJO ROCHA Mellysse	1/3	33				1/3			
27	LUDWIG KIELING Sophia	16/33	48	4/7	6/9	2/4	1/2	0/7	3/4	
	TOTAL	17/36	47	4/7	6/9	2/4	2/5	0/7	3/4	0/0

Coach: Mauricio Antonucci

Number of attacks: 69, Efficiency: 35%, Average Duration: 26.41 seconds

### Attack by type of defense

	Shots	9m	6m	Wing	TF	E7	E2
On def. 6-0	18/27	7/12	3/4	2/4	15	1	1
On def. 5-1	4/13	0/2	1/1	2/6	16	0	1
Fastbreak	0/0				0	0	0

### Defense by type

	Total	9m	6m	Wing	Stl.	C7	2m
Def. 6-0	7/25	2/7	2/10	2/4	3	3	0
Def. 5-1	2/7	1/1	1/3	0/1	1	2	0
Fastbreak	10/11				0	0	4

### Attack with superiority / minority / goalkeeper out

	Attack				Reaction		
	Att.	Eff.	Shots	TF	FB	LD	Tot.
7 on 6 (GK out)	6	17%	1/3	3	0/0	2/2	2/2
7 on 5 (GK out)	1	0%	0/0	1	0/0	0/0	0/0
6 on 6 (GK out)	5	20%	1/2	3	2/2	1/1	3/3
5 on 5 (GK out)	1	0%	0/1	0	0/0	0/0	0/0
6 on 6	52	37%	19/29	23			
6 on 5	4	75%	3/3	1			

Player superiority / GK out counted at the end of attack (in case it changes during attack)

### Defense with superiority / minority / goalkeeper out

	Attack				Reaction		
	Att.	Eff.	Shots	TF	FB	LD	Tot.
7 on 6 (GK out)	1	0%	0/0	1	0/0	0/0	0/0
6 on 6 (GK out)	5	20%	1/2	3	0/0	1/1	1/1
6 on 6	55	31%	17/36	19			
7 on 5 (GK out)	1	0%	0/0	1	0/0	0/0	0/0
6 on 5	6	83%	5/6	0			
5 on 5	1	100%	1/1	0			
6 on 4 (GK out)	2	50%	1/2	0	0/0	0/0	0/0

Numbers show attacking numbers of opponent. Lower efficiency of opponent means better defense of this team

# Jersey number Tot. Total shooting 6m 6m (line) shooting 9m 9m shooting Wng Wing shooting FB Fastbreak sh. 7m 7m penalty sh.  
 Brk. Breakthrough sh. LD Long distance sh. As. Assists PC Pass clear chance E7 Earned 7m pen. TF Technical faults St. Steals  
 2m 2m punishments C7 Committed 7m E2 Earned 2m pun. YC Yellow cards R/B Red/Blue cards Blk. Blocks S Starting Line-up



# 10th IHF Women's Youth World Championship 2024



Final Round, 9-12. place

## Match Team Statistics

Match No. 84

## Brazil 24 - 25 Czechia

(16 - 13) (8 - 12)

22.8.2024. 15:45

Attendance: 200

Olympic Sports Center

Referees: Mohamed El Gahss (MAR) / Zakaria El Malwane (MAR)

### Shot distribution by player

2 J. Dos Santos Gomes

	1/2	
1/1		

5 A. Gonçalves Nunes

2/3	1/1	1/1

6 J. Monteiro Da Silva

1/1		

1 post 1 miss. 1/1 lob

8 M. Kozar Dovigo


1 miss. 0/1 lob

9 L. Da Silva Vitor

		1/1
	1/1	
		1/1

11 J. Santos De Sousa

1/1		2/2

13 L. Grassmann Fúculo

0/1		
1/1		
1/1		2/3

17 B. Rodrigues Soares

1/1		1/1

18 A. Souza

1/1		
-----	--	--

1 post

20 N. Teixeira De Castro

		0/1
		0/1

1 post

23 S. Van Lieshout

		1/1
--	--	-----

25 R. Cardoso Brandao Ladeia

		1/1
0/1		
1/2		

1 post 1 miss. 2 block

28 L. Flores Da Silva Pereira

--	--	--

77 G. Lessa Barros E Silva

--	--	--

### TOTAL

0/1		2/3
2/3	2/3	1/2
8/10	1/1	7/8

4 post 3 miss. 2 block 1/2 lob

### Saves distribution goalkeepers

16 M. De Souza Araújo Rocha

1/1		
0/2		

27 S. Ludwig Kieling

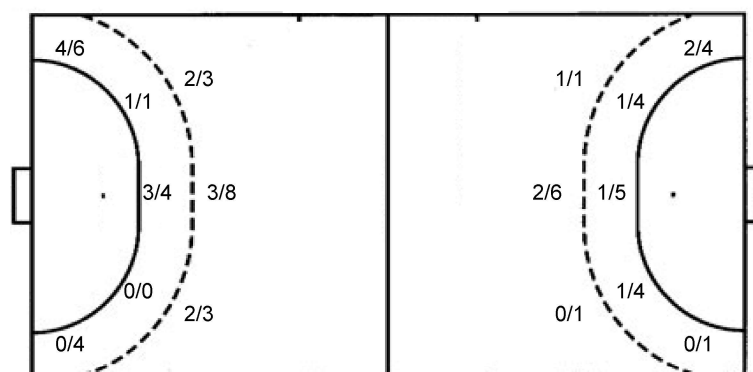
1/3	5/5	2/6
1/1	1/1	2/3
2/4	0/1	2/6

### TOTAL

1/3	5/5	2/6
2/2	1/1	2/3
2/6	0/1	2/6

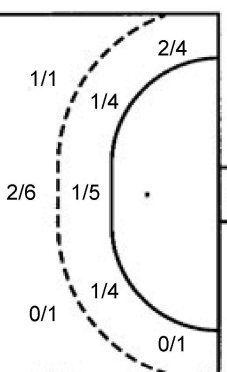
### Shots by position

#### ATTACK



7m penalties 1/1  
Fastbreak 0/0  
Breakthrough 7/11  
Long dist. 1/1

#### DEFENSE



7m penalties 3/5  
Fastbreak 10/11  
Breakthrough 1/6  
Long dist. 3/3

### Shooting statistics

Position	Goals	Sav.	Miss.	Post	Blk.	Total	%
Back (9m)	7	3	0	2	2	14	50
Line (6m)	4	1	0	0	0	5	80
Wing	4	2	2	2	0	10	40
7m penalties	1	0	0	0	0	1	100
Fastbreak	0	0	0	0	0	0	0
Breakthrough	7	3	1	0	0	11	64
Total	23	9	3	4	2	41	56

# Jersey number Tot. Total shooting 6m 6m (line) shooting 9m 9m shooting Wng Wing shooting FB Fastbreak sh. 7m 7m penalty sh.  
Brk. Breakthrough sh. LD Long distance sh. As. Assists PC Pass clear chance E7 Earned 7m pen. TF Technical faults St. Steals  
2m 2m punishments C7. Committed 7m E2 Earned 2m pun. YC. Yellow cards R/B Red/Blue cards Blk. Blocks S Starting Line-up

Handball statistics and livescore by Toma-soft ltd (www.toma-soft.hr)



# 10th IHF Women's Youth World Championship 2024

Final Round, 9-12. place



Match Team Statistics

Match No. 84

**Brazil 24 - 25 Czechia**

(16 - 13) (8 - 12)

22.8.2024. 15:45

Attendance: 200

Olympic Sports Center

Referees: Mohamed El Gahss (MAR) / Zakaria El Malwane (MAR)

## Czechia

#	Surname and name	S	Goals / shots								Attack					Def.			Penalties			TP					
			Tot.	%	9m	6m	Wing	7m	FB	Brk.	LD	As.	PC	E7	E2	TF	St.	C7	Blk	YC	2m		R	B			
1	FADRŇA Nikola	S																								38:30	
2	MALCOVÁ Zuzana																										
3	PAZDEROVÁ Tereza	S	3/5	60	1/1		0/1	1/2	1/1																		35:10
4	KOCOVÁ Anna	S	2/5	40		0/3								2/2	1		1	1	3								41:36
5	RAMPOVÁ Claudia	S	11/14	79			2/3	1/2	7/8					1/1	1		1	1	3		5						42:23
7	ŠKÁRKOVÁ Eliška		1/2	50		1/2										1											30:25
9	BABOROVSKÁ Natálie																										13:01
10	MATĚJKOVÁ Regina	S	3/9	33		1/2			2/2	0/5				3							4						51:58
11	HOLEŇÁKOVÁ Melisa																						1				9:04
12	CHVÁTALOVÁ Adéla																										17:51
13	PEJŠOVÁ Viktorie	S	2/7	29	1/5	0/1		1/1						1	2						1						34:51
15	BARONOVÁ Eliška		1/3	33		1/2	0/1																				18:20
17	VRBKOVÁ Viktorie		0/2	0	0/1	0/1																					13:18
19	POSPÍŠILOVÁ Tereza	S	0/1	0		0/1																					20:39
21	POLANKOVÁ Markéta		1/1	100						1/1																	24:50
22	FILÍPKOVÁ Tereza		1/2	50	1/1	0/1								1	1	1											28:04
	Team / bench																										
	UKUPNO		25/51	49	3/8	3/13	2/5	3/5	10/11	1/6	3/3			7	4	5	3	24	12		1	2	0	3	0	0	

#	Surname and name	Saves / shots																										
		Tot.	%	9m	6m	Wing	7m	FB	Brk.	LD																		
1	FADRŇA Nikola	6/20	30	2/6	0/1	1/4	0/1			3/8																		
12	CHVÁTALOVÁ Adéla	3/12	25	1/4	1/4	1/2				0/2																		
	TOTAL	9/32	28	3/10	1/5	2/6	0/1	0/0	3/10	0/0																		

Coach: Petra Vítková

Number of attacks: 71, Efficiency: 35%, Average Duration: 25.01 seconds

## Attack by type of defense

	Shots	9m	6m	Wing	TF	E7	E2
On def. 6-0	7/25	2/7	2/10	2/4	18	3	3
On def. 5-1	2/7	1/1	1/3	0/1	6	2	0
Fastbreak	10/11				0	0	0

## Defense by type

	Total	9m	6m	Wing	Stl.	C7	2m
Def. 6-0	18/27	7/12	3/4	2/4	6	1	0
Def. 5-1	4/13	0/2	1/1	2/6	6	0	0
Fastbreak	0/0				0	0	3

## Attack with superiority / minority / goalkeeper out

	Attack				Reaction		
	Att.	Eff.	Shots	TF	FB	LD	Tot.
7 on 6 (GK out)	1	0%	0/0	1	0/0	0/0	0/0
6 on 6 (GK out)	5	20%	1/2	3	0/0	1/1	1/1
6 on 6	55	31%	17/36	19			
7 on 5 (GK out)	1	0%	0/0	1	0/0	0/0	0/0
6 on 5	6	83%	5/6	0			
5 on 5	1	100%	1/1	0			
6 on 4 (GK out)	2	50%	1/2	0	0/0	0/0	0/0

Player superiority / GK out counted at the end of attack (in case it changes during attack)

## Defense with superiority / minority / goalkeeper out

	Attack				Reaction		
	Att.	Eff.	Shots	TF	FB	LD	Tot.
7 on 6 (GK out)	6	17%	1/3	3	0/0	2/2	2/2
7 on 5 (GK out)	1	0%	0/0	1	0/0	0/0	0/0
6 on 6 (GK out)	5	20%	1/2	3	2/2	1/1	3/3
5 on 5 (GK out)	1	0%	0/1	0	0/0	0/0	0/0
6 on 6	52	37%	19/29	23			
6 on 5	4	75%	3/3	1			

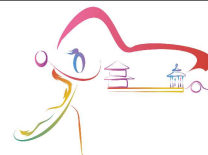
Numbers show attacking numbers of opponent. Lower efficiency of opponent means better defense of this team

# Jersey number Tot. Total shooting 6m 6m (line) shooting 9m 9m shooting Wng Wing shooting FB Fastbreak sh. 7m 7m penalty sh.  
 Brk. Breakthrough sh. LD Long distance sh. As. Assists PC Pass clear chance E7 Earned 7m pen. TF Technical faults St. Steals  
 2m 2m punishments C7. Committed 7m E2 Earned 2m pun. YC. Yellow cards R/B Red/Blue cards Blk. Blocks S Starting Line-up



# 10th IHF Women's Youth World Championship 2024

Final Round, 9-12. place



## Match Team Statistics

Match No. 84

## Brazil 24 - 25 Czechia

(16 - 13) (8 - 12)

22.8.2024. 15:45

Attendance: 200

Olympic Sports Center

Referees: Mohamed El Gahss (MAR) / Zakaria El Malwane (MAR)

## Shot distribution by player

### 2 Z. Malcová


### 3 T. Pazderová

	0/1	2/2
1/2		

### 4 A. Kocová

	0/1	
	2/2	0/1
		0/1

### 5 C. Rampová

1/1		2/3
0/1	4/4	
1/1		

1 post 3/3 lob

### 7 E. Škárková

1/1		
		0/1

### 9 N. Baborovská


### 10 R. Matějková

0/1		0/1
0/1		1/2
		2/2

1 post 1 miss.

### 11 M. Holeňáková


### 13 V. Pejšová

	0/2	
1/2		1/1

2 miss.

### 15 E. Baroňová

		1/1

1 post 1 miss.

### 17 V. Vrbková

	0/1	

1 miss.

### 19 T. Pospíšilová

	0/1	

### 21 M. Polanková

1/1		

### 22 T. Filipková

	1/1	

1 miss.

## TOTAL

2/3	0/5	4/6
0/2	6/7	1/3
4/6	1/1	4/6

3 post 6 miss. 3/3 lob

## Saves distribution goalkeepers

### 1 N. Fadrná

		0/2
1/2	1/2	0/1
2/6	0/1	1/5

### 12 A. Chvátalová

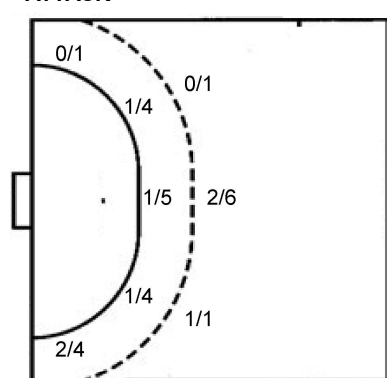
1/1		1/1
0/1		1/1
0/4		0/3

## TOTAL

1/1		1/3
1/3	1/2	1/2
2/10	0/1	1/8

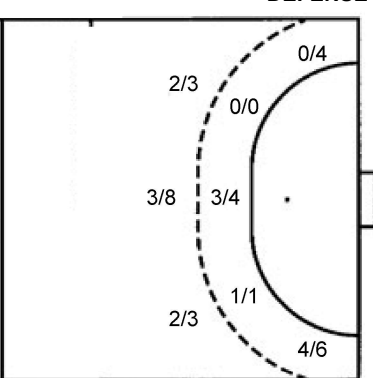
## Shots by position

### ATTACK



7m penalties 3/5  
Fastbreak 10/11  
Breakthrough 1/6  
Long dist. 3/3

### DEFENSE



7m penalties 1/1  
Fastbreak 0/0  
Breakthrough 7/11  
Long dist. 1/1

## Shooting statistics

Position	Goals	Sav.	Miss.	Post	Blk.	Total	%
Back (9m)	3	4	1	0	0	8	38
Line (6m)	3	6	3	1	0	13	23
Wing	2	2	1	0	0	5	40
7m penalties	3	2	0	0	0	5	60
Fastbreak	10	0	0	1	0	11	91
Breakthrough	1	3	1	1	0	6	17
<b>Total</b>	<b>22</b>	<b>17</b>	<b>6</b>	<b>3</b>	<b>0</b>	<b>48</b>	<b>46</b>

# Jersey number Tot. Total shooting 6m 6m (line) shooting 9m 9m shooting Wng Wing shooting FB Fastbreak sh. 7m 7m penalty sh.  
Brk. Breakthrough sh. LD Long distance sh. As. Assists PC Pass clear chance E7 Earned 7m pen. TF Technical faults St. Steals  
2m 2m punishments C7. Committed 7m E2 Earned 2m pun. YC. Yellow cards R/B Red/Blue cards Blk. Blocks S Starting Line-up

Handball statistics and livescore by Toma-soft ltd (www.toma-soft.hr)

