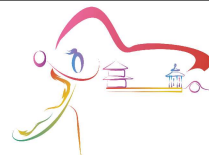




10th IHF Women's Youth World Championship 2024



President's Cup - Group I, 2. round

Match Team Statistics

Match No. 78

Chile 21 - 32 Angola

(9 - 11) (12 - 21)

20.8.2024. 14:00

Attendance: 250

Vocational and Technical
College

Referees: Andjelina Kazanegra (MNE) / Jelena Vujacic (MNE)

Chile

#	Surname and name	S	Goals / shots								Attack					Def.			Penalties				TP							
			Tot.	%	9m	6m	Wing	7m	FB	Brk.	LD	As.	PC	E7	E2	TF	St.	C7	Blk	YC	2m	R		B						
2	BARRAZA Macarena		0/2	0	0/2										2	3		1	1	3									20:49	
3	GONZÁLEZ Catalina	S	4/6	67	2/3	0/1										3	2	1	6	2									57:09	
4	CANESSA Colomba	S	2/4	50	0/1	2/3													1	2									41:16	
5	ASENJO Daniela	S																											29:01	
6	MAYHUAY Noa		3/7	43															1	1									29:23	
7	BAEZA Estefania	S	2/7	29	0/4	1/2									1	3	1	4	3	1									42:21	
9	LARENAS Anais	S	3/9	33	2/4	0/2	0/2									1			2		1					1			49:05	
10	VALDIVIESO Isidora																													
11	LIZANA Renata		3/6	50	1/3		0/1	2/2								2			1	1									30:13	
13	CARRASCO Noelia		1/1	100				1/1								1			2										18:33	
14	MILLAN Antonia	S	1/4	25			1/2			0/1	0/1									1									33:35	
16	ULLOA Karina																												20:15	
28	ALMASIO Anneliese		2/2	100	2/2																								6:15	
31	FUENTES Antonia	S	0/2	0			0/2																						31:08	
33	CAMPOS Renata																												0:29	
36	GORE Isabella																												9:30	
	Team / bench																										1			
	TOTAL		21/50	42	7/19	3/8	3/12	3/3	1/3	4/5	0/0				3	13	3	6	17	11	1	0					1	1	0	0

#	Surname and name	Saves / shots								
		Tot.	%	9m	6m	Wing	7m	FB	Brk.	LD
5	ASENJO Daniela	5/22	23	2/7	1/4	2/3	0/1	0/1	0/6	
16	ULLOA Karina	4/14	29	2/3	0/1	1/2		0/4	1/4	
36	GORE Isabella	1/6	17	0/1		0/3		1/1	0/1	
	TOTAL	10/42	24	4/11	1/5	3/8	0/1	1/6	1/11	0/0

Coach: José Tham

Number of attacks: 62, Efficiency: 34%, Average Duration: 33.44 seconds

Attack by type of defense

	Shots	9m	6m	Wing	TF	E7	E2
On def. 6-0	17/42	7/18	3/7	3/12	17	3	6
On def. 5-1	0/2	0/1	0/1	0/0	0	0	0
Fastbreak	1/3				0	0	0

Defense by type

	Total	9m	6m	Wing	Stl.	C7	2m
Def. 6-0	20/31	5/10	3/4	4/7	7	1	0
Def. 5-1	4/7	1/1	1/2	0/2	1	0	0
Def. 4-2	1/2	0/1	0/0	1/1	3	0	0
Def. 3-3	1/1	1/1	0/0	0/0	0	0	0
Fastbreak	5/7				0	0	1

Attack with superiority / minority / goalkeeper out

	Attack				Reaction		
	Att.	Eff.	Shots	TF	FB	LD	Tot.
7 on 6 (GK out)	1	0%	0/1	0	0/0	0/0	0/0
6 on 5 (GK out)	1	0%	0/0	1	0/0	0/0	0/0
6 on 6	48	33%	16/32	16			
6 on 5	12	42%	5/12	0			

Player superiority / GK out counted at the end of attack (in case it changes during attack)

Defense with superiority / minority / goalkeeper out

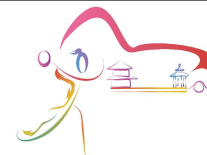
	Attack				Reaction		
	Att.	Eff.	Shots	TF	FB	LD	Tot.
7 on 6 (GK out)	1	100%	1/1	0	0/0	0/0	0/0
6 on 6	51	53%	27/39	12			
5 on 6	9	33%	3/5	4			
5 on 5	2	50%	1/1	1			

Numbers show attacking numbers of opponent. Lower efficiency of opponent means better defense of this team

Jersey number Tot. Total shooting 6m 6m (line) shooting 9m 9m shooting Wng Wing shooting FB Fastbreak sh. 7m 7m penalty sh.
 Brk. Breakthrough sh. LD Long distance sh. As. Assists PC Pass clear chance E7 Earned 7m pen. TF Technical faults St. Steals
 2m 2m punishments C7. Committed 7m E2 Earned 2m pun. YC. Yellow cards R/B Red/Blue cards Blk. Blocks S Starting Line-up



10th IHF Women's Youth World Championship 2024



President's Cup - Group I, 2. round

Match Team Statistics

Match No. 78

Chile 21 - 32 Angola

(9 - 11) (12 - 21)

20.8.2024. 14:00

Attendance: 250

Vocational and Technical College

Referees: Andjelina Kazanegra (MNE) / Jelena Vujacic (MNE)

Shot distribution by player

2 M. Barraza

1 post 1 block

3 C. González

		1/2
		1/1
		2/2

1 miss.

4 C. Canessa

	0/1	
2/2		0/1

1 miss.

6 N. Mayhuay

		1/1
1/2	0/1	1/1

1 post 1 miss.

7 E. Baeza

0/1		
0/1		
2/2		

2 miss. 1 block

9 A. Larenas

1/1		0/1
		0/1
1/1	1/1	

1 post 2 miss. 1 block

10 I. Valdivieso

11 R. Lizana

		1/1
		0/1
1/1		1/1

2 block

13 N. Carrasco

		1/1

14 A. Millan

	0/1	
1/1	0/1	

1 miss.

28 A. Almasio

		1/1
1/1		

31 A. Fuentes

	0/1	

1 miss.

33 R. Campos

TOTAL

1/2	0/2	4/6
0/1		1/3
9/10	1/4	5/6

3 post 8 miss. 5 block

Saves distribution goalkeepers

5 D. Asenjo

	1/1	2/4
1/2		0/3
0/3	0/4	1/3

16 K. Ulloa

1/2	0/1	0/2
1/3	1/2	1/4

36 I. Gore

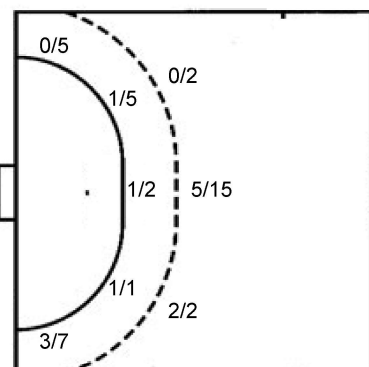
1/4		
0/1		0/1

TOTAL

2/6	1/2	2/6
1/2		0/3
1/7	1/6	2/8

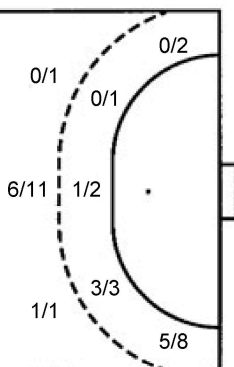
Shots by position

ATTACK



7m penalties	3/3
Fastbreak	1/3
Breakthrough	4/5
Long dist.	0/0

DEFENSE



7m penalties	1/1
Fastbreak	5/7
Breakthrough	10/12
Long dist.	0/0

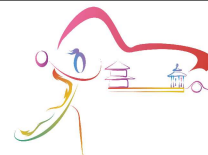
Shooting statistics

Position	Goals	Sav.	Miss.	Post	Blk.	Total	%
Back (9m)	7	2	4	1	5	19	37
Line (6m)	3	5	0	0	0	8	38
Wing	3	4	3	2	0	12	25
7m penalties	3	0	0	0	0	3	100
Fastbreak	1	1	1	0	0	3	33
Breakthrough	4	1	0	0	0	5	80
Total	21	13	8	3	5	50	42

Jersey number Tot. Total shooting 6m 6m (line) shooting 9m 9m shooting Wng Wing shooting FB Fastbreak sh. 7m 7m penalty sh.
 Brk. Breakthrough sh. LD Long distance sh. As. Assists PC Pass clear chance E7 Earned 7m pen. TF Technical faults St. Steals
 2m 2m punishments C7. Committed 7m E2 Earned 2m pun. YC. Yellow cards R/B Red/Blue cards Blk. Blocks S Starting Line-up



10th IHF Women's Youth World Championship 2024



President's Cup - Group I, 2. round

Match Team Statistics

Match No. 78

Chile 21 - 32 Angola

(9 - 11) (12 - 21)

20.8.2024. 14:00

Attendance: 250

Vocational and Technical College

Referees: Andjelina Kazanegra (MNE) / Jelena Vujacic (MNE)

Angola

#	Surname and name	S	Goals / shots								Attack				Def.			Penalties				TP					
			Tot.	%	9m	6m	Wing	7m	FB	Brk.	LD	As.	PC	E7	E2	TF	St.	C7	Blk	YC	2m		R	B			
1	DOMINGOS Kelveia Maria Hossi																										
2	LUSSENDE Carla Beatriz	S	3/3	100						2/2	1/1			1					1		3			1			27:53
4	NUNES Ivete Alexandra Bravo		1/1	100						1/1						2		1									15:35
5	BUMBA Rubi Leandra Correia	S	5/8	63		0/1	5/7							1			3										50:50
7	CASTRO Maria Canga De																										
8	PEREIRA Beatriz Bundo Calepete		0/1	0			0/1																				16:53
9	MALAGI Arisia Helena Bambi	S	1/1	100							1/1			1													34:52
10	DOMINGOS Constantina Manuel		14/21	67	5/7	2/3	0/1		1/3	6/7				4	2	1	1	2	1					1			46:00
11	CAMBUTA Paloma Bianca Bandeira	S																			1						5:16
12	MAIA Joice Dos Santos																										12:20
15	PAULINO Patricia Rossana Pascoal	S	1/1	100						1/1									1	1			2				42:45
20	MANUEL Vilma Da Cunha	S	0/1	0	0/1										2			1	1		1		1				27:46
22	DOMINGOS Elizandra Helena Lopes	S													1			2									47:40
23	AFONSO Matutzila Nsimba Miguel		3/4	75	1/1	2/2	0/1							1			2		1				1				34:49
32	LOPES Sandra Dinamene Kukubica																										
90	NUNDA Balbina Cassova Afonsa		4/8	50	1/4				1/1					1			5										57:21
	Team / bench																										
	TOTAL		32/49	65	7/13	4/6	5/10	1/1	5/7	10/12	0/0			9	5	1	1	17	3	3	5	1	6	0	0		

#	Surname and name	Saves / shots								
		Tot.	%	9m	6m	Wing	7m	FB	Brk.	LD
1	DOMINGOS Kelveia Maria Hossi									
12	MAIA Joice Dos Santos	2/5	40	0/1		1/1	0/1	1/1	0/1	
22	DOMINGOS Elizandra Helena Lopes	11/29	38	2/8	5/8	3/6	0/2	0/1	1/4	
	TOTAL	13/34	38	2/9	5/8	4/7	0/3	2/2	1/5	0/0

Coach:

Number of attacks: 63, Efficiency: 51%, Average Duration: 23.98 seconds

Attack by type of defense

	Shots	9m	6m	Wing	TF	E7	E2
On def. 6-0	20/31	5/10	3/4	4/7	13	1	1
On def. 5-1	4/7	1/1	1/2	0/2	1	0	0
On def. 4-2	1/2	0/1	0/0	1/1	3	0	0
On def. 3-3	1/1	1/1	0/0	0/0	0	0	0
Fastbreak	5/7				0	0	0

Defense by type

	Total	9m	6m	Wing	Stl.	C7	2m
Def. 6-0	17/42	7/18	3/7	3/12	3	3	0
Def. 5-1	0/2	0/1	0/1	0/0	0	0	0
Fastbreak	1/3				0	0	6

Attack with superiority / minority / goalkeeper out

	Attack				Reaction		
	Att.	Eff.	Shots	TF	FB	LD	Tot.
7 on 6 (GK out)	1	100%	1/1	0	0/0	0/0	0/0
6 on 6	51	53%	27/39	12			
5 on 6	9	33%	3/5	4			
5 on 5	2	50%	1/1	1			

Player superiority / GK out counted at the end of attack (in case it changes during attack)

Defense with superiority / minority / goalkeeper out

	Attack				Reaction		
	Att.	Eff.	Shots	TF	FB	LD	Tot.
7 on 6 (GK out)	1	0%	0/1	0	0/0	0/0	0/0
6 on 5 (GK out)	1	0%	0/0	1	0/0	0/0	0/0
6 on 6	48	33%	16/32	16			
6 on 5	12	42%	5/12	0			

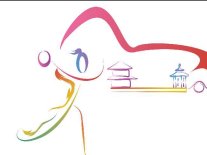
Numbers show attacking numbers of opponent. Lower efficiency of opponent means better defense of this team

Jersey number Tot. Total shooting 6m 6m (line) shooting 9m 9m shooting Wng Wing shooting FB Fastbreak sh. 7m 7m penalty sh.
 Brk. Breakthrough sh. LD Long distance sh. As. Assists PC Pass clear chance E7 Earned 7m pen. TF Technical faults St. Steals
 2m 2m punishments C7. Committed 7m E2 Earned 2m pun. YC. Yellow cards R/B Red/Blue cards Blk. Blocks S Starting Line-up

Handball statistics and livescore by Toma-soft ltd (www.toma-soft.hr)



10th IHF Women's Youth World Championship 2024



President's Cup - Group I, 2. round

Match Team Statistics

Match No. 78

Chile 21 - 32 Angola

(9 - 11) (12 - 21)

20.8.2024. 14:00

Attendance: 250

Vocational and Technical College

Referees: Andjelina Kazanegra (MNE) / Jelena Vujacic (MNE)

Shot distribution by player

2 C. Lussende

1/1		1/1
1/1		

4 I. Nunes

1/1		

5 R. Bumba

3/3		
		1/1

3 post 1/1 lob

7 M. Castro

8 B. Pereira

0/1		

9 A. Malagi

		1/1

10 C. Domingos

0/2	1/2	1/1
1/1		2/2
1/2	5/6	3/4

1 post

11 P. Cambuta

15 P. Paulino

		1/1

20 V. Manuel

1 miss.

23 M. Afonso

		0/1
3/3		

32 S. Lopes

90 B. Nunda

		0/1
		1/1
		2/3

2 miss. 1/1 lob

TOTAL

4/6	1/2	4/6
1/2		3/3
6/7	5/6	6/8

4 post 3 miss. 2/2 lob

Saves distribution goalkeepers

1 K. Domingos

12 J. Maia

		0/1
		1/1
0/1	1/1	0/1

22 E. Domingos

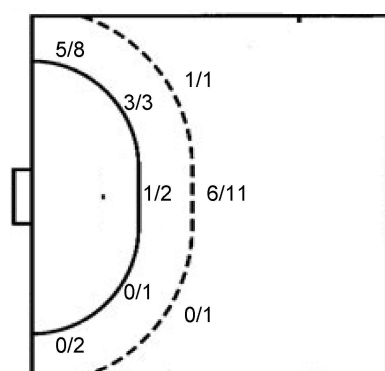
1/2	2/2	2/5
1/1		1/2
1/9	2/3	1/5

TOTAL

1/2	2/2	2/6
1/1		2/3
1/10	3/4	1/6

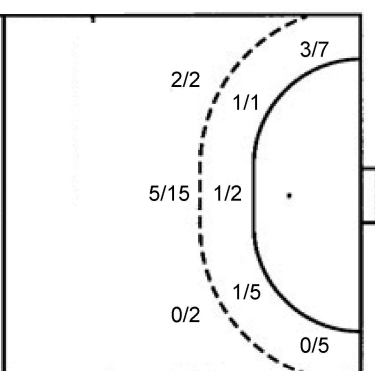
Shots by position

ATTACK



7m penalties 1/1
Fastbreak 5/7
Breakthrough 10/12
Long dist. 0/0

DEFENSE



7m penalties 3/3
Fastbreak 1/3
Breakthrough 4/5
Long dist. 0/0

Shooting statistics

Position	Goals	Sav.	Miss.	Post	Blk.	Total	%
Back (9m)	7	4	2	0	0	13	54
Line (6m)	4	1	0	1	0	6	67
Wing	5	3	0	2	0	10	50
7m penalties	1	0	0	0	0	1	100
Fastbreak	5	1	0	1	0	7	71
Breakthrough	10	1	1	0	0	12	83
Total	32	10	3	4	0	49	65

Jersey number Tot. Total shooting 6m 6m (line) shooting 9m 9m shooting Wng Wing shooting FB Fastbreak sh. 7m 7m penalty sh.
Brk. Breakthrough sh. LD Long distance sh. As. Assists PC Pass clear chance E7 Earned 7m pen. TF Technical faults St. Steals
2m 2m punishments C7. Committed 7m E2 Earned 2m pun. YC. Yellow cards R/B Red/Blue cards Blk. Blocks S Starting Line-up

Handball statistics and livescore by Toma-soft ltd (www.toma-soft.hr)

