



# 10th IHF Women's Youth World Championship 2024



Main Round - Group I, 2. round

Match Team Statistics  
Match No. 73

**Sweden 19 - 24 Croatia**  
(10 - 12) (9 - 12)

20.8.2024. 14:00  
Attendance: 200  
Olympic Sports Center

Referees: Denis Bolic (AUT) / Christoph Hurich (AUT)

## Sweden

Players		Goals / shots									Attack					Def.			Penalties				TP		
#	Surname and name	S	Tot.	%	9m	6m	Wing	7m	FB	Brk.	LD	As.	PC	E7	E2	TF	St.	C7	Blk	YC	2m	R		B	
1	MELIN Mathilda	S																							19:26
2	KINDAHL Linnéa	S	2/3	67		1/2			1/1																34:49
3	SVENSSON Moa		1/3	33		1/1	0/1		0/1							2									24:12
6	HUSELIUS Nova		9/10	90	2/3			3/3		3/3	1/1	2	1	1	1	4									35:04
8	BERGLUND Julia		2/5	40			1/4		1/1																40:12
9	NORRGARD Meja	S	0/6	0	0/4				0/1	0/1		1						1	1						32:52
10	LÖF Astrid	S	3/4	75	0/1				1/1	2/2			2	3	1	1	1	1							43:57
11	MIELKE Cassandra		0/3	0	0/1	0/1			0/1				1												4:23
12	SAUL Wilma														1										4:20
15	LINDBERG Isa		0/2	0	0/2										1										11:32
16	DANIELSSON Anna																								33:56
17	PORTILLO Maja		1/1	100		1/1																			23:05
18	RYDÉN Isabelle	S														1									49:56
32	LILJA Smilla	S	1/4	25	0/1					1/3		1	1			4	1	1							35:25
33	JOHANSSON Thella	S																1					1		26:51
Team / bench																									
TOTAL			19/41	46	2/12	3/5	1/5	3/3	3/6	6/9	1/1	4	5	4	2	14	2	4	1	0	0	1	0		

Goalkeepers		Saves / shots								
#	Surname and name	Tot.	%	9m	6m	Wing	7m	FB	Brk.	LD
1	MELIN Mathilda	2/10	20	0/2	1/4	1/1			0/3	
12	SAUL Wilma	1/3	33		0/1		0/1		1/1	
16	DANIELSSON Anna	5/19	26	1/1	2/7	2/2	0/3	0/1	0/5	
TOTAL		8/32	25	1/3	3/12	3/3	0/4	0/1	1/9	0/0

Coach: Frenne Baverud

Number of attacks: 53, Efficiency: 36%, Average Duration: 31.51 seconds

### Attack by type of defense

	Shots	9m	6m	Wing	TF	E7	E2
On def. 6-0	12/31	2/12	3/5	1/5	14	4	2
Fastbreak	3/6				0	0	0

### Defense by type

	Total	9m	6m	Wing	Stl.	C7	2m
Def. 6-0	16/27	2/6	6/9	0/4	2	3	0
Def. 5-1	3/5	0/0	3/3	0/1	0	1	0
Fastbreak	1/1				0	0	0

### Attack with superiority / minority / goalkeeper out

	Attack				Reaction		
	Att.	Eff.	Shots	TF	FB	LD	Tot.
7 on 6 (GK out)	4	50%	2/3	1	0/0	0/0	0/0
7 on 5 (GK out)	1	0%	0/1	0	0/0	0/0	0/0
6 on 5 (GK out)	1	100%	1/1	0	0/0	0/0	0/0
6 on 6	43	33%	14/32	11			
6 on 5	3	67%	2/2	1			
5 on 6	1	0%	0/0	1			

Player superiority / GK out counted at the end of attack (in case it changes during attack)

### Defense with superiority / minority / goalkeeper out

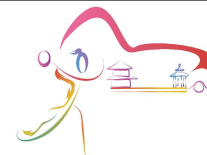
	Attack				Reaction		
	Att.	Eff.	Shots	TF	FB	LD	Tot.
7 on 6 (GK out)	1	0%	0/0	1	0/0	0/0	0/0
6 on 6 (GK out)	4	50%	2/2	2	0/0	1/1	1/1
6 on 6	46	43%	20/32	14			
6 on 5	2	100%	2/2	0			

Numbers show attacking numbers of opponent. Lower efficiency of opponent means better defense of this team

# Jersey number Tot. Total shooting 6m 6m (line) shooting 9m 9m shooting Wng Wing shooting FB Fastbreak sh. 7m 7m penalty sh.  
Brk. Breakthrough sh. LD Long distance sh. As. Assists PC Pass clear chance E7 Earned 7m pen. TF Technical faults St. Steals  
2m 2m punishments C7. Committed 7m E2 Earned 2m pun. YC. Yellow cards R/B Red/Blue cards Blk. Blocks S Starting Line-up



# 10th IHF Women's Youth World Championship 2024



Main Round - Group I, 2. round

## Match Team Statistics

Match No. 73

## Sweden 19 - 24 Croatia

(10 - 12) (9 - 12)

20.8.2024. 14:00

Attendance: 200

Olympic Sports Center

Referees: Denis Bolic (AUT) / Christoph Hurich (AUT)

### Shot distribution by player

#### 2 L. Kindahl

		1/1
0/1		1/1

#### 3 M. Svensson

	0/1	1/1

1 post

#### 6 N. Huselius

1/1		1/1
		2/2
3/3		2/2

1 block

#### 8 J. Berglund

		1/1
0/1	0/1	1/1

1 post

#### 9 M. Norrgard

0/1		
	0/1	0/1

1 miss. 2 block

#### 10 A. Löf

2/2		
1/1		

1 block

#### 11 C. Mielke

	0/1	

1 miss. 1 block

#### 15 I. Lindberg


1 post 1 miss.

#### 17 M. Portillo

1/1		

#### 18 I. Rydén


#### 32 S. Lilja

1/1		

1 post 1 miss. 1 block

#### 33 T. Johansson


#### TOTAL

4/5	0/1	4/4
0/1		3/3
5/6	0/3	3/4

4 post 4 miss. 6 block

### Saves distribution goalkeepers

#### 1 M. Melin

0/1	0/2	0/1
0/1		
0/1		1/3

#### 12 W. Saul

1/1		
		0/1

#### 16 A. Danielsson

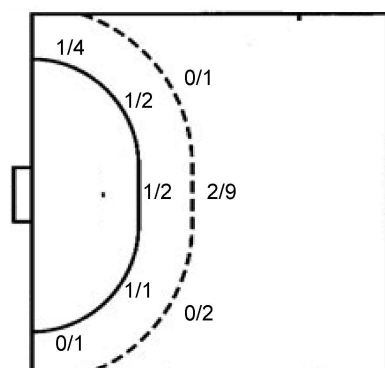
0/2		0/1
2/2		0/2
1/5		2/7

#### TOTAL

1/4	0/2	0/2
2/3		0/2
1/6		3/11

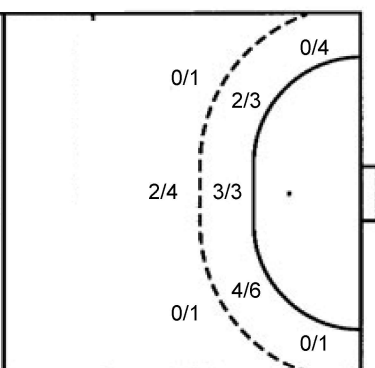
### Shots by position

#### ATTACK



7m penalties	3/3
Fastbreak	3/6
Breakthrough	6/9
Long dist.	1/1

#### DEFENSE



7m penalties	4/4
Fastbreak	1/1
Breakthrough	8/9
Long dist.	0/0

### Shooting statistics

Position	Goals	Sav.	Miss.	Post	Blk.	Total	%
Back (9m)	2	1	2	1	6	12	17
Line (6m)	3	1	1	0	0	5	60
Wing	1	3	0	1	0	5	20
7m penalties	3	0	0	0	0	3	100
Fastbreak	3	2	0	1	0	6	50
Breakthrough	6	1	1	1	0	9	67
<b>Total</b>	<b>18</b>	<b>8</b>	<b>4</b>	<b>4</b>	<b>6</b>	<b>40</b>	<b>45</b>

# Jersey number Tot. Total shooting 6m 6m (line) shooting 9m 9m shooting Wng Wing shooting FB Fastbreak sh. 7m 7m penalty sh.  
 Brk. Breakthrough sh. LD Long distance sh. As. Assists PC Pass clear chance E7 Earned 7m pen. TF Technical faults St. Steals  
 2m 2m punishments C7. Committed 7m E2 Earned 2m pun. YC. Yellow cards R/B Red/Blue cards Blk. Blocks S Starting Line-up



# 10th IHF Women's Youth World Championship 2024



Main Round - Group I, 2. round

Match Team Statistics

**Sweden 19 - 24 Croatia**

20.8.2024. 14:00

Match No. 73

(10 - 12) (9 - 12)

Attendance: 200

Olympic Sports Center

Referees: Denis Bolic (AUT) / Christoph Hurich (AUT)

## Croatia

#	Surname and name	S	Goals / shots								Attack					Def.			Penalties				TP						
			Tot.	%	9m	6m	Wing	7m	FB	Brk.	LD	As.	PC	E7	E2	TF	St.	C7	Blk	YC	2m	R		B					
1	PUDIĆ Lara																											0:27	
3	IVANČIĆ Una																											7:40	
4	VUKOVIĆ Katja	S	3/4	75		2/2	0/1		1/1						1	1	1		1						1			58:54	
5	ČIČAK Antea		4/5	80		0/1									1	1			5									31:26	
7	RENIĆ Lucija	S	0/1	0			0/1												1									58:43	
8	FRATNIK Ivana	S	4/6	67	1/1	2/2	0/1			1/2						1			3	1	1							33:40	
11	BRUSIĆ Mirna		5/5	100		1/1			4/4																			1:21	
12	KRALJEVIĆ Nika	S																										56:41	
13	GROZDANIĆ Lucija																											0:07	
15	BABARA Veronika	S	3/5	60	1/1	2/2	0/2									2			3		1	2	1	2				54:24	
16	TURKALJ Marta																												
17	BURDELEZ Nina	S	1/2	50	0/1					1/1					2	2			2	1								44:36	
18	ZUBAC Josipa																											20:25	
21	ĐELEKOVIĆ Tara	S	4/8	50	0/3	2/3				2/2					1	1			2						3			45:53	
24	BOUČEK Anđelina																												
28	MARENDIĆ Klara		0/1	0		0/1																				1			5:43
	Team / bench																												
	<b>TOTAL</b>		<b>24/37</b>	<b>65</b>	<b>2/6</b>	<b>9/12</b>	<b>0/5</b>	<b>4/4</b>	<b>1/1</b>	<b>8/9</b>	<b>0/0</b>				<b>4</b>	<b>4</b>	<b>4</b>	<b>1</b>	<b>17</b>	<b>2</b>	<b>4</b>	<b>6</b>	<b>1</b>	<b>3</b>	<b>0</b>	<b>0</b>			

#	Surname and name	Saves / shots								
		Tot.	%	9m	6m	Wing	7m	FB	Brk.	LD
1	PUDIĆ Lara	0/1	0				0/1			
12	KRALJEVIĆ Nika	8/25	32	1/3	1/4	3/4	0/2	2/5	1/7	
16	TURKALJ Marta									
	<b>TOTAL</b>	<b>8/26</b>	<b>31</b>	<b>1/3</b>	<b>1/4</b>	<b>3/4</b>	<b>0/3</b>	<b>2/5</b>	<b>1/7</b>	<b>0/0</b>

Coach: Vedran Krkač

Number of attacks: 53, Efficiency: 45%, Average Duration: 36.09 seconds

### Attack by type of defense

	Shots	9m	6m	Wing	TF	E7	E2
On def. 6-0	16/27	2/6	6/9	0/4	15	3	1
On def. 5-1	3/5	0/0	3/3	0/1	2	1	0
Fastbreak	1/1				0	0	0

### Defense by type

	Total	9m	6m	Wing	Stl.	C7	2m
Def. 6-0	12/31	2/12	3/5	1/5	2	4	0
Fastbreak	3/6				0	0	3

### Attack with superiority / minority / goalkeeper out

	Attack				Reaction		
	Att.	Eff.	Shots	TF	FB	LD	Tot.
7 on 6 (GK out)	1	0%	0/0	1	0/0	0/0	0/0
6 on 6 (GK out)	4	50%	2/2	2	0/0	1/1	1/1
6 on 6	46	43%	20/32	14			
6 on 5	2	100%	2/2	0			

Player superiority / GK out counted at the end of attack (in case it changes during attack)

### Defense with superiority / minority / goalkeeper out

	Attack				Reaction		
	Att.	Eff.	Shots	TF	FB	LD	Tot.
7 on 6 (GK out)	4	50%	2/3	1	0/0	0/0	0/0
7 on 5 (GK out)	1	0%	0/1	0	0/0	0/0	0/0
6 on 5 (GK out)	1	100%	1/1	0	0/0	0/0	0/0
6 on 6	43	33%	14/32	11			
6 on 5	3	67%	2/2	1			
5 on 6	1	0%	0/0	1			

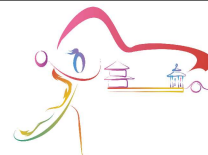
Numbers show attacking numbers of opponent. Lower efficiency of opponent means better defense of this team

# Jersey number Tot. Total shooting 6m 6m (line) shooting 9m 9m shooting Wng Wing shooting FB Fastbreak sh. 7m 7m penalty sh.  
 Brk. Breakthrough sh. LD Long distance sh. As. Assists PC Pass clear chance E7 Earned 7m pen. TF Technical faults St. Steals  
 2m 2m punishments C7. Committed 7m E2 Earned 2m pun. YC. Yellow cards R/B Red/Blue cards Blk. Blocks S Starting Line-up

Handball statistics and livescore by Toma-soft ltd (www.toma-soft.hr)



# 10th IHF Women's Youth World Championship 2024



Main Round - Group I, 2. round

## Match Team Statistics

Match No. 73

## Sweden 19 - 24 Croatia

(10 - 12) (9 - 12)

20.8.2024. 14:00

Attendance: 200

Olympic Sports Center

Referees: Denis Bolic (AUT) / Christoph Hurich (AUT)

## Shot distribution by player

### 3 U. Ivančić


### 4 K. Vuković

0/1		
1/1		2/2

### 5 A. Čičak

2/2		
1/1		
0/1		1/1

### 7 L. Renić


0/1 lob

### 8 I. Fratnik

0/1	2/2	1/1
1/1		

1 post

### 11 M. Brusić

2/2		3/3

### 13 L. Grozdanić


### 15 V. Babara

1/1		
1/1		0/1

1 miss. 1/1 lob

### 17 N. Burđelez

		1/1
		0/1

### 18 J. Zubac


### 21 T. Đelekovičan

		1/1
0/1		1/1
		2/2

2 miss. 1 block

### 24 A. Bouček


### 28 K. Marendić

		0/1

### TOTAL

3/4	2/2	2/2
1/3		2/2
5/6		8/11

1 post 3 miss. 1 block 1/2 lob

## Saves distribution goalkeepers

### 1 L. Pudić

		0/1

### 12 N. Kraljević

1/5	1/1	0/3
1/1		0/3
1/5	3/3	1/4

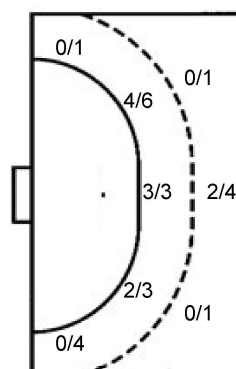
### 16 M. Turkalj


### TOTAL

1/5	1/1	0/4
1/1		0/3
1/5	3/3	1/4

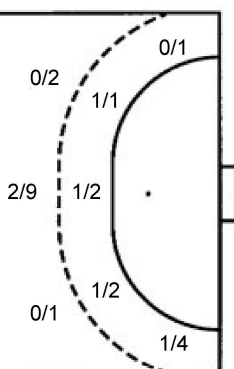
## Shots by position

### ATTACK



7m penalties 4/4  
Fastbreak 1/1  
Breakthrough 8/9  
Long dist. 0/0

### DEFENSE



7m penalties 3/3  
Fastbreak 3/6  
Breakthrough 6/9  
Long dist. 1/1

## Shooting statistics

Position	Goals	Sav.	Miss.	Post	Blk.	Total	%
Back (9m)	2	1	2	0	1	6	33
Line (6m)	9	3	0	0	0	12	75
Wing	0	3	1	1	0	5	0
7m penalties	4	0	0	0	0	4	100
Fastbreak	1	0	0	0	0	1	100
Breakthrough	8	1	0	0	0	9	89
<b>Total</b>	<b>24</b>	<b>8</b>	<b>3</b>	<b>1</b>	<b>1</b>	<b>37</b>	<b>65</b>

# Jersey number Tot. Total shooting 6m 6m (line) shooting 9m 9m shooting Wng Wing shooting FB Fastbreak sh. 7m 7m penalty sh.  
Brk. Breakthrough sh. LD Long distance sh. As. Assists PC Pass clear chance E7 Earned 7m pen. TF Technical faults St. Steals  
2m 2m punishments C7. Committed 7m E2 Earned 2m pun. YC. Yellow cards R/B Red/Blue cards Blk. Blocks S Starting Line-up

Handball statistics and livescore by Toma-soft ltd (www.toma-soft.hr)

