



10th IHF Women's Youth World Championship 2024



President's Cup - Group II, 2. round

Match Team Statistics

Match No. 71

Korea 31 - 21 Kosovo

(14 - 11) (17 - 10)

20.8.2024. 10:00

Attendance: 100

Olympic Sports Center

Referees: Omer Al-Shahi (OMA) / Khamis Al Wahibi (OMA)

Korea

| Players | | Goals / shots | | | | | | | | | Attack | | | | | Def. | | | Penalties | | | | TP | | |
|--------------|------------------|---------------|-------|-----|-----|------|------|-----|-----|------|--------|-----|----|----|----|------|-----|----|-----------|----|----|---|----|---|-------|
| # | Surname and name | S | Tot. | % | 9m | 6m | Wing | 7m | FB | Brk. | LD | As. | PC | E7 | E2 | TF | St. | C7 | Blk | YC | 2m | R | | B | |
| 2 | SHIN Yeeun | S | 3/4 | 75 | | 1/1 | 2/3 | | | | | | | | 1 | | | | | | | | | | 26:29 |
| 7 | CHO Seoyeon | S | 4/6 | 67 | | 0/1 | | | 1/1 | 3/4 | | 1 | | 2 | | | | | 2 | | | 1 | | | 31:13 |
| 9 | KIM Jimin | S | 5/9 | 56 | | | 1/5 | | 4/4 | | | | | | | 2 | 3 | | | | | | | | 53:33 |
| 11 | BEOM Dabin | | | | | | | | | | | 1 | | | | 2 | | | | | | | | | 3:08 |
| 13 | CHOI Hyosung | | | | | | | | | | | | | | | 1 | | 1 | | | | | | | 7:01 |
| 14 | KIM Jiyoung | | | | | | | | | | | | | | | | | | | | | | | | |
| 15 | HWANG Dasom | | | | | | | | | | | | | | | | | | | | | | | | |
| 17 | SUH Ayoung | | | | | | | | | | | 2 | | 2 | | | | 2 | 1 | | | 2 | | | 28:31 |
| 19 | HEO Yunseo | S | 1/1 | 100 | | 1/1 | | | | | | | | 1 | | 1 | 2 | | | | | | | | 52:52 |
| 20 | LEE Yeseo | S | 5/7 | 71 | | | 0/1 | 4/5 | 1/1 | | | | | | | | | | | | | | | | 33:36 |
| 23 | KIM Bokyeong | S | 2/7 | 29 | 1/2 | 0/4 | | 1/1 | | | | | | 1 | 1 | 1 | | | | | | | | | 19:32 |
| 24 | KIM Suyeon | | 0/4 | 0 | | | 0/2 | | 0/2 | | | | | | | | | 1 | | | | | | | 6:15 |
| 28 | LEE Jinseo | | 4/6 | 67 | | 1/1 | | 2/2 | | 1/3 | | 4 | | 1 | | 2 | 1 | | | | | 1 | | | 40:17 |
| 29 | KU Hyeonji | S | 7/9 | 78 | 2/4 | 2/2 | | | 1/1 | 2/2 | | 3 | 3 | | | 4 | 1 | | | 2 | | | | | 56:44 |
| 77 | GO Chaeun | S | | | | | | | | | | 1 | | | | | | | | | | | | | 60:00 |
| Team / bench | | | | | | | | | | | | | | | | | | | | | | | | | |
| TOTAL | | | 31/53 | 58 | 3/6 | 5/10 | 3/11 | 7/8 | 7/9 | 6/9 | 0/0 | 12 | 3 | 8 | 1 | 13 | 10 | 4 | 2 | 0 | 4 | 0 | 0 | 0 | |

| Goalkeepers | | Saves / shots | | | | | | | | |
|-------------|------------------|---------------|----|-----|-----|------|-----|-----|------|-----|
| # | Surname and name | Tot. | % | 9m | 6m | Wing | 7m | FB | Brk. | LD |
| 77 | GO Chaeun | 11/32 | 34 | 3/4 | 4/9 | 2/2 | 1/4 | 0/4 | 1/9 | |
| TOTAL | | 11/32 | 34 | 3/4 | 4/9 | 2/2 | 1/4 | 0/4 | 1/9 | 0/0 |

Coach: Sunhee Woo

Number of attacks: 60, Efficiency: 52%, Average Duration: 27.60 seconds

Attack by type of defense

| | Shots | 9m | 6m | Wing | TF | E7 | E2 |
|-------------|-------|-----|------|------|----|----|----|
| On def. 6-0 | 17/36 | 3/6 | 5/10 | 3/11 | 13 | 8 | 1 |
| Fastbreak | 7/9 | | | | 0 | 0 | 0 |

Defense by type

| | Total | 9m | 6m | Wing | Stl. | C7 | 2m |
|-----------|-------|-----|------|------|------|----|----|
| Def. 6-0 | 14/34 | 1/8 | 5/13 | 0/3 | 10 | 4 | 0 |
| Fastbreak | 4/5 | | | | 0 | 0 | 4 |

Attack with superiority / minority / goalkeeper out

| | Attack | | | | Reaction | | |
|--------|--------|------|-------|----|----------|----|------|
| | Att. | Eff. | Shots | TF | FB | LD | Tot. |
| 6 on 6 | 46 | 52% | 24/38 | 8 | | | |
| 6 on 5 | 5 | 80% | 4/5 | 0 | | | |
| 5 on 6 | 9 | 33% | 3/4 | 5 | | | |

Player superiority / GK out counted at the end of attack (in case it changes during attack)

Defense with superiority / minority / goalkeeper out

| | Attack | | | | Reaction | | |
|--------|--------|------|-------|----|----------|----|------|
| | Att. | Eff. | Shots | TF | FB | LD | Tot. |
| 6 on 6 | 47 | 30% | 14/26 | 21 | | | |
| 5 on 6 | 4 | 25% | 1/3 | 1 | | | |
| 6 on 5 | 10 | 60% | 6/8 | 2 | | | |

Numbers show attacking numbers of opponent. Lower efficiency of opponent means better defense of this team

Jersey number Tot. Total shooting 6m 6m (line) shooting 9m 9m shooting Wng Wing shooting FB Fastbreak sh. 7m 7m penalty sh.
 Brk. Breakthrough sh. LD Long distance sh. As. Assists PC Pass clear chance E7 Earned 7m pen. TF Technical faults St. Steals
 2m 2m punishments C7. Committed 7m E2 Earned 2m pun. YC. Yellow cards R/B Red/Blue cards Blk. Blocks S Starting Line-up



10th IHF Women's Youth World Championship 2024



President's Cup - Group II, 2. round

Match Team Statistics

Match No. 71

Korea 31 - 21 Kosovo

(14 - 11) (17 - 10)

20.8.2024. 10:00

Attendance: 100

Olympic Sports Center

Referees: Omer Al-Shahi (OMA) / Khamis Al Wahibi (OMA)

Shot distribution by player

2 Y. Shin

| | | |
|-----|--|-----|
| | | |
| 0/1 | | |
| | | 2/2 |

1/1 lob

7 S. Cho

| | | |
|-----|--|-----|
| 1/1 | | 1/1 |
| 0/1 | | |
| 1/1 | | 1/1 |

1 post

9 J. Kim

| | | |
|--|--|-----|
| | | |
| | | 1/2 |
| | | 2/2 |

1 post 2 miss. 2/2 lob

11 D. Beom

| | | |
|--|--|--|
| | | |
| | | |
| | | |

13 H. Choi

| | | |
|--|--|--|
| | | |
| | | |
| | | |

14 J. Kim

| | | |
|--|--|--|
| | | |
| | | |
| | | |

15 D. Hwang

| | | |
|--|--|--|
| | | |
| | | |
| | | |

17 A. Suh

| | | |
|--|--|--|
| | | |
| | | |
| | | |

19 Y. Heo

| | | |
|-----|--|--|
| 1/1 | | |
| | | |
| | | |

20 Y. Lee

| | | |
|-----|--|-----|
| | | |
| | | |
| 1/2 | | 4/4 |

1 miss.

23 B. Kim

| | | |
|-----|--|-----|
| 1/1 | | |
| | | |
| 0/3 | | 1/2 |

1 post

24 S. Kim

| | | |
|--|-----|-----|
| | | |
| | 0/1 | 0/1 |
| | 0/1 | 0/1 |

28 J. Lee

| | | |
|-----|-----|-----|
| 1/1 | | 1/1 |
| | 0/1 | 0/1 |
| 1/1 | 1/1 | |

29 H. Ku

| | | |
|-----|--|-----|
| 1/1 | | 1/1 |
| | | |
| 3/3 | | 1/1 |

1 post 1 miss. 1/1 lob

TOTAL

| | | |
|------|-----|-------|
| 5/5 | | 3/3 |
| 0/2 | 0/2 | 1/4 |
| 6/10 | 1/2 | 11/13 |

4 post 4 miss. 4/4 lob

Saves distribution goalkeepers

77 C. Go

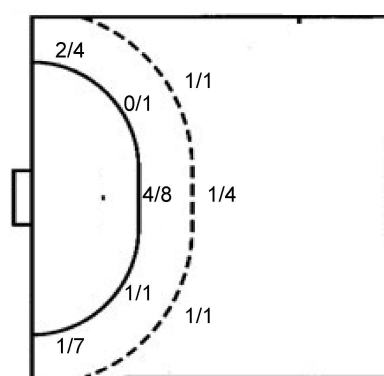
| | | |
|-----|-----|-----|
| 1/3 | | 2/3 |
| 1/2 | 1/1 | 0/2 |
| 2/6 | | 1/9 |

TOTAL

| | | |
|-----|-----|-----|
| 1/3 | | 2/3 |
| 1/2 | 1/1 | 0/2 |
| 2/6 | | 1/9 |

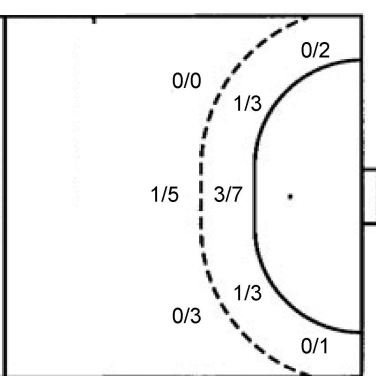
Shots by position

ATTACK



7m penalties 7/8
Fastbreak 7/9
Breakthrough 6/9
Long dist. 0/0

DEFENSE



7m penalties 3/4
Fastbreak 4/5
Breakthrough 8/10
Long dist. 0/0

Shooting statistics

| Position | Goals | Sav. | Miss. | Post | Blk. | Total | % |
|--------------|-----------|-----------|----------|----------|----------|-----------|-----------|
| Back (9m) | 3 | 0 | 1 | 2 | 0 | 6 | 50 |
| Line (6m) | 5 | 4 | 0 | 1 | 0 | 10 | 50 |
| Wing | 3 | 5 | 2 | 1 | 0 | 11 | 27 |
| 7m penalties | 7 | 0 | 1 | 0 | 0 | 8 | 88 |
| Fastbreak | 7 | 2 | 0 | 0 | 0 | 9 | 78 |
| Breakthrough | 6 | 3 | 0 | 0 | 0 | 9 | 67 |
| Total | 31 | 14 | 4 | 4 | 0 | 53 | 58 |

Jersey number Tot. Total shooting 6m 6m (line) shooting 9m 9m shooting Wng Wing shooting FB Fastbreak sh. 7m 7m penalty sh.
Brk. Breakthrough sh. LD Long distance sh. As. Assists PC Pass clear chance E7 Earned 7m pen. TF Technical faults St. Steals
2m 2m punishments C7. Committed 7m E2 Earned 2m pun. YC. Yellow cards R/B Red/Blue cards Blk. Blocks S Starting Line-up

Handball statistics and livescore by Toma-soft ltd (www.toma-soft.hr)



10th IHF Women's Youth World Championship 2024



President's Cup - Group II, 2. round

Match Team Statistics

Match No. 71

Korea 31 - 21 Kosovo

(14 - 11) (17 - 10)

20.8.2024. 10:00

Attendance: 100

Olympic Sports Center

Referees: Omer Al-Shahi (OMA) / Khamis Al Wahibi (OMA)

Kosovo

| Players | | Goals / shots | | | | | | | | | Attack | | | | | Def. | | | Penalties | | | | TP | | | |
|---------|-------------------|---------------|-------|----|-----|------|------|-----|-----|------|--------|-----|----|----|----|------|-----|----|-----------|----|----|---|----|--|-------|--|
| # | Surname and name | S | Tot. | % | 9m | 6m | Wing | 7m | FB | Brk. | LD | As. | PC | E7 | E2 | TF | St. | C7 | Blk | YC | 2m | R | B | | | |
| 1 | PLLANA Albina | | | | | | | | | | | | | | | | | | | | | | | | | |
| 2 | BICI Daorsa | | | | | | | | | | | | | | | | | | | | | | | | | |
| 5 | GOLA Orgesa | S | 2/3 | 67 | | 0/1 | | | 1/1 | 1/1 | | | | 1 | | 2 | | | | | | | | | 40:30 | |
| 7 | KRASNIQI Arona | S | 1/2 | 50 | | 1/1 | | | 0/1 | | | | 1 | 1 | 1 | 1 | 1 | | | | | | | | 18:28 | |
| 8 | BIBAJ Martina | S | 2/7 | 29 | 0/3 | 1/1 | 0/2 | | 1/1 | | | | 1 | | | 2 | 2 | | | | | 1 | | | 50:48 | |
| 9 | GJERGJAJ Sara | S | 1/5 | 20 | 0/1 | 0/3 | | | | 1/1 | | | 1 | 1 | 1 | | 9 | | | | | | | | 54:01 | |
| 11 | UGLANI Andra | S | 2/8 | 25 | 1/4 | 0/2 | 0/1 | | | 1/1 | | | | | | 4 | | 3 | | | | | | | 42:31 | |
| 12 | SHABANI Alina | | | | | | | | | | | | | | | | | | | | | | | | 20:01 | |
| 15 | ZENELI Elona Elin | S | | | | | | | | | | | | | | 1 | | 3 | | | | 1 | | | 27:33 | |
| 17 | UKAJ Klaudia | | | | | | | | | | | | | | | 1 | | | | | | | | | 13:59 | |
| 20 | MAQEDONCI Laura | | | | | | | | | | | | | | | | | | | | | | | | | |
| 21 | KAMERAJ Zoja | | | | | | | | | | | | | | | | | | | | | | | | 1:58 | |
| 22 | DRESH Diona | S | 10/13 | 77 | | 2/4 | | 3/4 | | 5/5 | | 1 | | 1 | 2 | 4 | 3 | 2 | | | | | | | 47:33 | |
| 23 | KAMERAJ Sara | | | | | | | | | | | | | | | | | | | | | | | | 9:16 | |
| 27 | IMERAJ Arjeta | S | 3/5 | 60 | | 1/1 | | | 2/2 | 0/2 | | | | | | | 1 | | | | | | | | 52:46 | |
| 31 | HYSENI Lejla | S | | | | | | | | | | | | | | | | | | | | | | | 39:59 | |
| | Team / bench | | | | | | | | | | | | | | | | | | | | | | | | 1 | |
| | TOTAL | | 21/43 | 49 | 1/8 | 5/13 | 0/3 | 3/4 | 4/5 | 8/10 | 0/0 | 3 | 2 | 4 | 3 | 24 | 7 | 8 | 0 | 1 | 2 | 0 | 0 | | | |

| Goalkeepers | | Saves / shots | | | | | | | | |
|-------------|------------------|---------------|----|-----|-----|------|-----|-----|------|-----|
| # | Surname and name | Tot. | % | 9m | 6m | Wing | 7m | FB | Brk. | LD |
| 1 | PLLANA Albina | | | | | | | | | |
| 12 | SHABANI Alina | 2/12 | 17 | 0/2 | 1/2 | 1/3 | 0/2 | 0/3 | | |
| 31 | HYSENI Lejla | 12/33 | 36 | 0/1 | 3/7 | 4/5 | 0/5 | 2/6 | 3/9 | |
| | TOTAL | 14/45 | 31 | 0/3 | 4/9 | 5/8 | 0/7 | 2/9 | 3/9 | 0/0 |

Coach: Mitat Ferati

Number of attacks: 61, Efficiency: 34%, Average Duration: 31.87 seconds

Attack by type of defense

| | Shots | 9m | 6m | Wing | TF | E7 | E2 |
|-------------|-------|-----|------|------|----|----|----|
| On def. 6-0 | 14/34 | 1/8 | 5/13 | 0/3 | 24 | 4 | 3 |
| Fastbreak | 4/5 | | | | 0 | 0 | 0 |

Defense by type

| | Total | 9m | 6m | Wing | Stl. | C7 | 2m |
|-----------|-------|-----|------|------|------|----|----|
| Def. 6-0 | 17/36 | 3/6 | 5/10 | 3/11 | 7 | 8 | 0 |
| Fastbreak | 7/9 | | | | 0 | 0 | 2 |

Attack with superiority / minority / goalkeeper out

| | Attack | | | | Reaction | | |
|--------|--------|------|-------|----|----------|----|------|
| | Att. | Eff. | Shots | TF | FB | LD | Tot. |
| 6 on 6 | 47 | 30% | 14/26 | 21 | | | |
| 5 on 6 | 4 | 25% | 1/3 | 1 | | | |
| 6 on 5 | 10 | 60% | 6/8 | 2 | | | |

Player superiority / GK out counted at the end of attack (in case it changes during attack)

Defense with superiority / minority / goalkeeper out

| | Attack | | | | Reaction | | |
|--------|--------|------|-------|----|----------|----|------|
| | Att. | Eff. | Shots | TF | FB | LD | Tot. |
| 6 on 6 | 46 | 52% | 24/38 | 8 | | | |
| 6 on 5 | 5 | 80% | 4/5 | 0 | | | |
| 5 on 6 | 9 | 33% | 3/4 | 5 | | | |

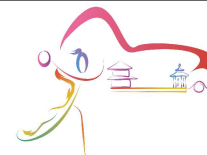
Numbers show attacking numbers of opponent. Lower efficiency of opponent means better defense of this team

Jersey number Tot. Total shooting 6m 6m (line) shooting 9m 9m shooting Wng Wing shooting FB Fastbreak sh. 7m 7m penalty sh.
 Brk. Breakthrough sh. LD Long distance sh. As. Assists PC Pass clear chance E7 Earned 7m pen. TF Technical faults St. Steals
 2m 2m punishments C7. Committed 7m E2 Earned 2m pun. YC. Yellow cards R/B Red/Blue cards Blk. Blocks S Starting Line-up

Handball statistics and livescore by Toma-soft ltd (www.toma-soft.hr)



10th IHF Women's Youth World Championship 2024



President's Cup - Group II, 2. round

Match Team Statistics

Match No. 71

Korea 31 - 21 Kosovo

(14 - 11) (17 - 10)

20.8.2024. 10:00

Attendance: 100

Olympic Sports Center

Referees: Omer Al-Shahi (OMA) / Khamis Al Wahibi (OMA)

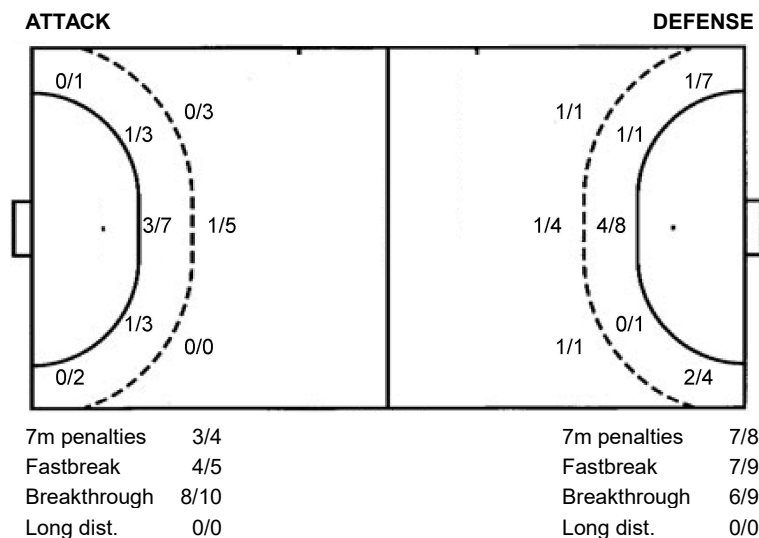
Shot distribution by player

| | | | | | | |
|-----------------------------|---|--|---|---|--|---|
| 2 D. Bici [Grid] | 5 O. Gola [Grid] 1 miss. 1/1 lob | 7 A. Krasniqi [Grid] 1 post 1/1 lob | 8 M. Bibaj [Grid] 0/1 0/1 [Grid] 0/1 2/2 1 post 1 block | 9 S. Gjergjaj [Grid] 0/1 1/1 1 miss. 1 block 0/1 lob | 11 A. Uglani [Grid] 1/2 [Grid] 0/1 [Grid] 1/1 2 post 1 miss. 0/1 lob | 15 E. Zeneli [Grid] |
| 17 K. Ukaj [Grid] | 20 L. Maqedonci [Grid] | 21 Z. Kameraj [Grid] | 22 D. Dresh [Grid] 2/2 [Grid] [Grid] 1/1 5/6 1 post 0/1 lob | 23 S. Kameraj [Grid] | 27 A. Imeraj [Grid] 1/2 [Grid] 1/1 1 post 1/1 lob | TOTAL [Grid] 2/3 1/3 1/2 0/1 2/2 4/6 8/9 6 post 3 miss. 2 block 3/6 lob |

Saves distribution goalkeepers

| | | | |
|------------------------------|---|--|--|
| 1 A. Pllana [Grid] | 12 A. Shabani [Grid] 0/2 0/1 1/1 0/1 1/2 0/1 0/3 | 31 L. Hyseni [Grid] 0/3 0/2 1/1 2/2 3/3 3/8 1/1 2/10 | TOTAL [Grid] 0/5 0/3 2/2 2/2 3/4 4/10 1/2 2/13 |
|------------------------------|---|--|--|

Shots by position



Shooting statistics

| Position | Goals | Sav. | Miss. | Post | Blk. | Total | % |
|--------------|-----------|-----------|----------|----------|----------|-----------|-----------|
| Back (9m) | 1 | 3 | 0 | 2 | 2 | 8 | 13 |
| Line (6m) | 5 | 4 | 3 | 1 | 0 | 13 | 38 |
| Wing | 0 | 2 | 0 | 1 | 0 | 3 | 0 |
| 7m penalties | 3 | 1 | 0 | 0 | 0 | 4 | 75 |
| Fastbreak | 4 | 0 | 0 | 1 | 0 | 5 | 80 |
| Breakthrough | 8 | 1 | 0 | 1 | 0 | 10 | 80 |
| Total | 21 | 11 | 3 | 6 | 2 | 43 | 49 |

Jersey number Tot. Total shooting 6m 6m (line) shooting 9m 9m shooting Wng Wing shooting FB Fastbreak sh. 7m 7m penalty sh.
 Brk. Breakthrough sh. LD Long distance sh. As. Assists PC Pass clear chance E7 Earned 7m pen. TF Technical faults St. Steals
 2m 2m punishments C7. Committed 7m E2 Earned 2m pun. YC. Yellow cards R/B Red/Blue cards Blk. Blocks S Starting Line-up

