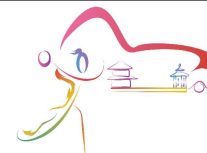




10th IHF Women's Youth World Championship 2024



Main Round - Group III, 1. round

Results
Match No. 59

Denmark 29 - 25 Norway
(15 - 17) (14 - 8)

19.8.2024. 16:00
Attendance: 350
International Handball Hall

Referees: Andjelina Kazanegra (MNE) / Jelena Vujacic (MNE)

Denmark

Players		Goals/shots										Attack			Defense	
#	Surname and name	S	Tot.	%	9m	6m	Wing	7m	Fst.	Brk.	LD	As	E7	TF	St.	2m
3	HEDEGAARD Cecilie Zimmer														2	
4	JENSEN Andrea Bjertrup	S	1/2	50			1/2									
6	KLASTRUP Emma Rogilds	S	4/7	57			3/6		1/1							1
7	HOPPE Kirstine Emilie		1/5	20	0/2	0/1				0/1	1/1	1				1 1
9	PLOUGSTRUP Anne Dolberg	S	3/4	75	1/2			2/2								
10	SCHRODER Andrea Münster															
11	KRISTENSEN Anna Mulbjerg		1/1	100			1/1									
15	PERSSON Julie Groth	S	2/3	67		1/2				1/1		2	1	2		
16	NIELSEN Freja Fonseca	S														
18	SCHLEICHER Emilie	S													1	
19	MICHELSSEN Ditte Alnor		2/3	67			2/3									1
20	MADSEN Zenia Hald														1	
21	ANDERSEN Signe Bang Sandager Roed		2/5	40	2/4	0/1						1		1		
23	HANSEN Caroline Friis		4/4	100		4/4									1	
24	NORSKOV Cecilie Frydendahl	S	7/9	78	1/2	1/1		3/3	1/1	1/2		2	2	1		
25	VEILGAARD Clara Bro		2/4	50	1/2	0/1				1/1		6	2	1		
	Team / bench															
	TOTAL		29/47	62	5/12	6/10	7/12	5/5	2/2	3/5	1/1	12	5	10	2	2

Goalkeepers		Saves / shots									
#	Surname and name	Tot.	%	9m	6m	Wing	7m	Fst.	Brk.	LD	
16	NIELSEN Freja Fonseca	2/11	18		0/2	1/5	0/1	0/1	1/2		
20	MADSEN Zenia Hald	8/24	33	5/6	1/6	0/3	1/2	0/4	1/3		
	TOTAL	10/35	29	5/6	1/8	1/8	1/3	0/5	2/5	0/0	

Coach: Ole Lund Bitsch

Norway

Players		Goals/shots										Attack			Defense	
#	Surname and name	S	Tot.	%	9m	6m	Wing	7m	Fst.	Brk.	LD	As	E7	TF	St.	2m
1	RO Pernille															
4	HAGENES Maia Matre	S	4/4	100		3/3			1/1							
5	HALDORSSON Mali		1/4	25	0/2			1/2				2			1	1
6	BREEN Milla Haugerstuen	S	2/3	67		1/1	1/2							2	1	
8	REFSLAND Vilde															
10	WITH Synne	S	9/11	82			4/5	0/1	4/4	1/1				1	2	
11	HESSSEN Julia	S	3/4	75		1/1	1/1			1/2		7	1	4		
12	LANGAARD Leah Isabell															
14	EKERHOVD Sofie Nilssen		2/5	40	0/3	2/2						2				
16	GUNNARSDOTTIR Ella Briet	S										1				
18	TOMMERVAG Ingeborg Johanne Nyborg		0/1	0		0/1							1			1
21	GULBRANDSEN Vanessa Braten															
22	HOLTE Othilie Liudden		2/4	50	1/2		0/1	1/1				1	2			
24	ELLINGSEN Julie	S	1/5	20	0/3	0/1	1/1							2		
27	KONGSSUND Oda															
35	LANGSETH Thilla Karoline Molle	S	1/6	17	0/4					1/2		1		1		1
	Team / bench															
	TOTAL		25/47	53	1/14	7/9	7/10	2/4	5/5	3/5	0/0	14	4	10	4	3

Goalkeepers		Saves / shots									
#	Surname and name	Tot.	%	9m	6m	Wing	7m	Fst.	Brk.	LD	
1	RO Pernille	1/9	11	1/3	0/1	0/1	0/2	0/1	0/1		
12	LANGAARD Leah Isabell										
16	GUNNARSDOTTIR Ella Briet	9/29	31	1/4	3/8	3/9	0/3	0/1	2/4		
	TOTAL	10/38	26	2/7	3/9	3/10	0/5	0/2	2/5	0/0	

Coach: Ane Victoria Ness Mällberg

1. period

0 (2')	1	With S.
0 (2')	2	Breen M.
0 (3')	3	Hessen J.
0 (4')	4	With S.
1 (4')	4	
1 (5')	5	Ellingsen J.
2 (6')	5	
2 (6')	6	Hagenes M.
2 (7')	7	With S.
3 (8')	7	
3 (9')	8	Hagenes M.
4 (9')	8	
5 (10')	8	
6 (12')	8	
7 (12')	8	
7 (14')	9	Ekerhovd S.
7 (15')	10	Hagenes M.
8 (15')	10	
8 (17')	11	With S.
9 (18')	11	
9 (19')	12	With S.
10 (19')	12	
10 (20')	13	Hessen J.
10 (20')	14	With S.
11 (21')	14	
11 (22')	15	Hagenes M.
11 (24')	16	With S.
12 (25')	16	
13 (27')	16	
14 (28')	16	
14 (28')	17	Holte O.
15 (29')	17	

2. period

16 (32')	17	
16 (33')	18	Haldorsson M.
17 (34')	18	
18 (35')	18	
19 (37')	18	
20 (38')	18	
20 (39')	19	With S.
21 (39')	19	
21 (40')	20	Hessen J.
22 (42')	20	
23 (45')	20	
24 (47')	20	
25 (48')	20	
25 (48')	21	Breen M.
26 (50')	21	
26 (52')	22	With S.
27 (53')	22	
27 (53')	23	Ekerhovd S.
28 (54')	23	
28 (55')	24	Langseth T.
28 (57')	25	Holte O.
29 (60')	25	

Jersey number Tot. Total shooting 6m 6m (line) sh. 9m 9m shooting Wng Wing shooting Fst. Fastbreak sh. 7m 7m penalty sh. LD Long distance
Brk. Breakthrough As. Assists E7 Earned 7m TF Technical Faults St. Steals 2m 2m suspensions S Starting line-up

Handball statistics and livescore by Toma-soft ltd (www.toma-soft.hr)