



10th IHF Women's Youth World Championship 2024



Group E, 3. round

Match Team Statistics

Chinese Taipei 28 - 15 Greenland

17.8.2024. 18:00

Match No. 48

(15 - 5) (13 - 10)

Attendance: 550

Vocational and Technical College

Referees: Roua Haggui (TUN) / Sahar Haggui (TUN)

Chinese Taipei

Players		Goals / shots									Attack				Def.			Penalties			TP				
#	Surname and name	S	Tot.	%	9m	6m	Wing	7m	FB	Brk.	LD	As.	PC	E7	E2	TF	St.	C7	Blk	YC		2m	R	B	
3	CHUAN Heng Yi		4/5	80	2/2	1/2				1/1							1					1			28:50
6	CHANG Fu Ying	S	5/5	100		2/2	1/1			2/2			1		1	2						2			48:25
8	LIN Ching	S	6/14	43	1/7	2/2		2/2	1/2	0/1		3	1	1		2		1							48:15
9	CHEN Chen		1/2	50	0/1		1/1											1							12:39
10	YU Chien Yu											1					1								17:03
12	LIN Jui Chi											1													10:04
13	GU Ting Yu																								7:47
14	WU Ching Shiuan		0/1	0						0/1							1								34:39
15	WANG Yu Ting		1/1	100		1/1										1									5:12
18	FU Yu Jun	S																							48:59
19	YANG Yu Xuan	S	4/6	67			3/5		1/1							2									36:34
77	HSU Fang Ying	S	2/3	67	1/1	1/1			0/1			1				2			1						37:31
83	CHANG Chih Yu	S	0/1	0			0/1					2					3								21:59
91	LIN Yi Jun	S	3/3	100	2/2				1/1																30:36
95	HSU Yun Hsuan		0/1	0			0/1																		8:01
99	LIN Ling Xuan		2/3	67		1/1		1/1	0/1			1		2	2	1									23:26
Team / bench																									
TOTAL			28/45	62	6/13	8/9	5/9	3/3	3/6	3/5	0/0	9	2	3	1	12	6	2	1	0	3	0	0		

Goalkeepers		Saves / shots								
#	Surname and name	Tot.	%	9m	6m	Wing	7m	FB	Brk.	LD
12	LIN Jui Chi	3/7	43	3/4	0/2				0/1	
18	FU Yu Jun	13/24	54	5/10	1/4	3/4	2/2		2/4	
TOTAL		16/31	52	8/14	1/6	3/4	2/2	0/0	2/5	0/0

Coach: Tsung Sheng Tan

Number of attacks: 53, Efficiency: 53%, Average Duration: 29.58 seconds

Attack by type of defense

	Shots	9m	6m	Wing	TF	E7	E2
On def. 6-0	22/36	6/13	8/9	5/9	12	3	1
Fastbreak	3/6				0	0	0

Defense by type

	Total	9m	6m	Wing	Stl.	C7	2m
Def. 6-0	9/19	4/10	3/4	0/1	2	1	0
Def. 5-1	4/10	2/5	1/1	0/2	3	1	0
Def. 4-2	0/2	0/0	0/1	0/1	0	0	0
Def. 3-3	0/2	0/2	0/0	0/0	0	0	0
Def. press.	2/3	0/1	1/1	1/1	1	0	0
Fastbreak	0/0				0	0	3

Attack with superiority / minority / goalkeeper out

	Attack				Reaction		
	Att.	Eff.	Shots	TF	FB	LD	Tot.
6 on 6 (GK out)	2	100%	2/2	0	0/0	0/0	0/0
6 on 6	47	53%	25/36	11			
5 on 6	4	25%	1/3	1			

Player superiority / GK out counted at the end of attack (in case it changes during attack)

Defense with superiority / minority / goalkeeper out

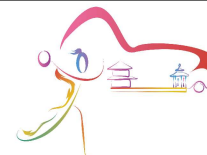
	Attack				Reaction		
	Att.	Eff.	Shots	TF	FB	LD	Tot.
6 on 6	46	24%	11/30	16			
7 on 5 (GK out)	1	0%	0/0	1	1/1	0/0	1/1
6 on 5	6	67%	4/5	1			

Numbers show attacking numbers of opponent. Lower efficiency of opponent means better defense of this team

Jersey number Tot. Total shooting 6m 6m (line) shooting 9m 9m shooting Wng Wing shooting FB Fastbreak sh. 7m 7m penalty sh.
 Brk. Breakthrough sh. LD Long distance sh. As. Assists PC Pass clear chance E7 Earned 7m pen. TF Technical faults St. Steals
 2m 2m punishments C7. Committed 7m E2 Earned 2m pun. YC. Yellow cards R/B Red/Blue cards Blk. Blocks S Starting Line-up



10th IHF Women's Youth World Championship 2024



Group E, 3. round

Match Team Statistics

Match No. 48

Chinese Taipei 28 - 15 Greenland

(15 - 5) (13 - 10)

17.8.2024. 18:00

Attendance: 550

Vocational and Technical College

Referees: Roua Haggui (TUN) / Sahar Haggui (TUN)

Shot distribution by player

3 H. Chuan 1/1 2/2 1/1 0/1	6 F. Chang 1/1 2/2 1/1 1/1	8 C. Lin 0/2 3/3 3/4 1 post 2 miss. 2 block	9 C. Chen 1/1 1 block	10 C. Yu	13 T. Gu	14 C. Wu 0/1
15 Y. Wang	19 Y. Yang 1/1 1/1 1/1 0/1 1/1 1/1 1 miss.	77 F. Hsu 1/1 0/1 1/1	83 C. Chang 0/1	91 Y. Lin 2/2 1/1	95 Y. Hsu 1 miss.	99 L. Lin 0/1 2/2

TOTAL

4/5	4/4
1/5	3/4
7/7	1/2
8/10	

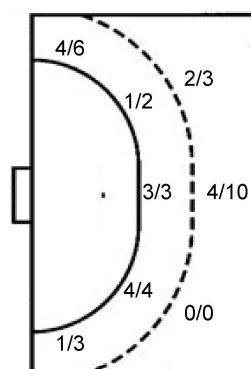
1 post 4 miss. 3 block

Saves distribution goalkeepers

12 J. Lin 0/1 2/2 0/2	18 Y. Fu 1/4 3/4 2/3 3/4 1/3 1/1 2/3	TOTAL 1/5 3/4 4/5 3/4 1/5 1/1 3/5
---------------------------------------	--	---

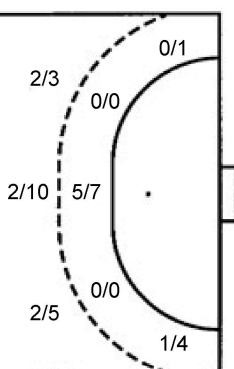
Shots by position

ATTACK



7m penalties	3/3
Fastbreak	3/6
Breakthrough	3/5
Long dist.	0/0

DEFENSE



7m penalties	0/2
Fastbreak	0/0
Breakthrough	3/6
Long dist.	0/0

Shooting statistics

Position	Goals	Sav.	Miss.	Post	Blk.	Total	%
Back (9m)	6	3	1	0	3	13	46
Line (6m)	8	1	0	0	0	9	89
Wing	5	2	2	0	0	9	56
7m penalties	3	0	0	0	0	3	100
Fastbreak	3	2	0	1	0	6	50
Breakthrough	3	1	1	0	0	5	60
Total	28	9	4	1	3	45	62

Jersey number Tot. Total shooting 6m 6m (line) shooting 9m 9m shooting Wng Wing shooting FB Fastbreak sh. 7m 7m penalty sh.
 Brk. Breakthrough sh. LD Long distance sh. As. Assists PC Pass clear chance E7 Earned 7m pen. TF Technical faults St. Steals
 2m 2m punishments C7. Committed 7m E2 Earned 2m pun. YC. Yellow cards R/B Red/Blue cards Blk. Blocks S Starting Line-up



10th IHF Women's Youth World Championship 2024



Group E, 3. round

Match Team Statistics

Chinese Taipei 28 - 15 Greenland

17.8.2024. 18:00

Match No. 48

(15 - 5) (13 - 10)

Attendance: 550

Vocational and Technical College

Referees: Roua Haggui (TUN) / Sahar Haggui (TUN)

Greenland

#	Surname and name	S	Goals / shots								Attack					Def.			Penalties				TP				
			Tot.	%	9m	6m	Wing	7m	FB	Brk.	LD	As.	PC	E7	E2	TF	St.	C7	Bik	YC	2m	R		B			
2	KREUTZMANN Paarma Louise																										
3	KNUDSEN Niviaq Sara Skifte	S	0/2	0		0/1	0/1								1		1										60:00
5	KLEIST Hannah Nuuno Marie Nielsen		2/2	100		2/2									1	1		1									25:22
6	JENSEN Bea Najaaraq Mathaussen	S	5/7	71	2/4		1/1								1	3	1	1	1	1	1	1					51:00
7	BERTHELSEN Tukummeq Lisette Klesit		0/2	0	0/2													4	1	1							19:49
9	PETERSEN Kira Brandt																										
13	PETERSEN Najaaja Louise Rossen																										6:12
14	MOLLER Amaunalik Maja Geisler	S	3/5	60		3/4	0/1														3						48:35
15	BERTHELSEN Arnanguaq Paninnguaq Ane Ingr																										5:13
16	JAKOBSEN Jaliina Vivi Asasaq Lund	S																									6:46
17	PETERSEN Pilunnguaq	S	0/3	0	0/3																						21:59
18	PETERSEN Ivaana Esther Mia Ravn Lennert																										52:58
22	PETERSEN Hannah Emilie Steenholdt	S	0/1	0			0/1																				60:00
23	HEILMANN Najaaraq Maren Eva		0/4	0	0/2																						4:56
24	LUNDBLAD Nadia Aia																										
26	BJORNESTAD Madeline	S	5/12	42	4/7			0/2																			57:10
Team / bench																											
TOTAL			15/38	39	6/18	5/7	1/5	0/2	0/0	3/6	0/0				3	4	2	2	18	3	3	3	0	0	0	0	

#	Surname and name	Saves / shots								
		Tot.	%	9m	6m	Wing	7m	FB	Brk.	LD
16	JAKOBSEN Jaliina Vivi Asasaq Lund	1/5	20	1/3	0/1	0/1				
18	PETERSEN Ivaana Esther Mia Ravn Lennert	8/32	25	2/6	1/8	2/6	0/3	2/5	1/4	
TOTAL		9/37	24	3/9	1/9	2/7	0/3	2/5	1/4	0/0

Coach: Victoria Ane Budek Svendsen

Number of attacks: 53, Efficiency: 28%, Average Duration: 37.68 seconds

Attack by type of defense

	Shots	9m	6m	Wing	TF	E7	E2
On def. 6-0	9/19	4/10	3/4	0/1	5	1	0
On def. 5-1	4/10	2/5	1/1	0/2	7	1	1
On def. 4-2	0/2	0/0	0/1	0/1	1	0	0
On def. 3-3	0/2	0/2	0/0	0/0	0	0	0
On def. press.	2/3	0/1	1/1	1/1	5	0	1
Fastbreak	0/0				0	0	0

Defense by type

	Total	9m	6m	Wing	Stl.	C7	2m
Def. 6-0	22/36	6/13	8/9	5/9	3	3	0
Fastbreak	3/6				0	0	0

Defense with superiority / minority / goalkeeper out

	Attack				Reaction		
	Att.	Eff.	Shots	TF	FB	LD	Tot.
6 on 6 (GK out)	2	100%	2/2	0	0/0	0/0	0/0
6 on 6	47	53%	25/36	11			
5 on 6	4	25%	1/3	1			

Numbers show attacking numbers of opponent. Lower efficiency of opponent means better defense of this team

Attack with superiority / minority / goalkeeper out

	Attack				Reaction		
	Att.	Eff.	Shots	TF	FB	LD	Tot.
6 on 6	46	24%	11/30	16			
7 on 5 (GK out)	1	0%	0/0	1	1/1	0/0	1/1
6 on 5	6	67%	4/5	1			

Player superiority / GK out counted at the end of attack (in case it changes during attack)

Jersey number Tot. Total shooting 6m 6m (line) shooting 9m 9m shooting Wng Wing shooting FB Fastbreak sh. 7m 7m penalty sh.
 Brk. Breakthrough sh. LD Long distance sh. As. Assists PC Pass clear chance E7 Earned 7m pen. TF Technical faults St. Steals
 2m 2m punishments C7. Committed 7m E2 Earned 2m pun. YC. Yellow cards R/B Red/Blue cards Blk. Blocks S Starting Line-up



10th IHF Women's Youth World Championship 2024



Group E, 3. round

Match Team Statistics

Match No. 48

Chinese Taipei 28 - 15 Greenland

(15 - 5) (13 - 10)

17.8.2024. 18:00

Attendance: 550

Vocational and Technical College

Referees: Roua Haggui (TUN) / Sahar Haggui (TUN)

Shot distribution by player

2 P. Kreutzmann

3 N. Knudsen

		0/1

1 miss.

5 H. Kleist

2/2		

6 B. Jensen

1/3		
1/1		1/1

2/2 lob

7 T. Berthelsen

		0/2

9 K. Petersen

13 N. Petersen

14 A. Moller

1/1		1/2
1/1		

1 miss.

15 A. Berthelsen

17 P. Petersen

0/1		0/1

1 post

22 H. Petersen

0/1		

23 N. Heilmann

		0/2
		0/1

1 miss.

24 N. Lundblad

26 M. Bjornestad

1/2		
0/1		1/2
2/2	0/1	1/1

1 post 1 miss. 1 block

TOTAL

4/5		1/4
1/5		1/4
4/5	0/1	2/5

2 post 4 miss. 1 block 2/2 lob

Saves distribution goalkeepers

16 J. Jakobsen

0/1		0/2
1/1		0/1

18 I. Petersen

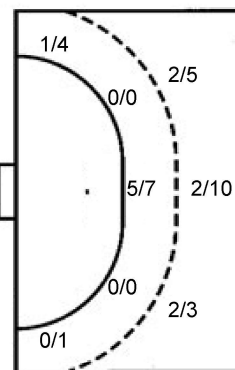
1/4		0/2
3/4		1/3
0/7	1/2	2/10

TOTAL

1/5		0/4
4/5		1/4
0/7	1/2	2/10

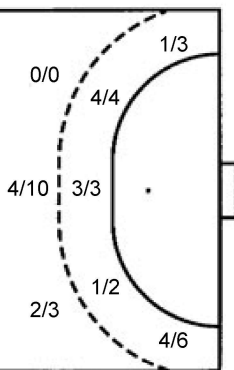
Shots by position

ATTACK



7m penalties	0/2
Fastbreak	0/0
Breakthrough	3/6
Long dist.	0/0

DEFENSE



7m penalties	3/3
Fastbreak	3/6
Breakthrough	3/5
Long dist.	0/0

Shooting statistics

Position	Goals	Sav.	Miss.	Post	Blk.	Total	%
Back (9m)	6	8	1	2	1	18	33
Line (6m)	5	1	1	0	0	7	71
Wing	1	3	1	0	0	5	20
7m penalties	0	2	0	0	0	2	0
Fastbreak	0	0	0	0	0	0	0
Breakthrough	3	2	1	0	0	6	50
Total	15	16	4	2	1	38	39

Jersey number Tot. Total shooting 6m 6m (line) shooting 9m 9m shooting Wng Wing shooting FB Fastbreak sh. 7m 7m penalty sh.
 Brk. Breakthrough sh. LD Long distance sh. As. Assists PC Pass clear chance E7 Earned 7m pen. TF Technical faults St. Steals
 2m 2m punishments C7. Committed 7m E2 Earned 2m pun. YC. Yellow cards R/B Red/Blue cards Blk. Blocks S Starting Line-up

