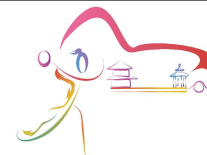




10th IHF Women's Youth World Championship 2024



Group E, 3. round

Match Team Statistics

Match No. 37

Denmark 28 - 22 P.R. of China

(14 - 13) (14 - 9)

17.8.2024. 18:00

Attendance: 5050

International Handball Hall

Referees: Mihai Pirvu (ROU) / Mihai Potirniche (ROU)

Shot distribution by player

3 C. Hedegaard

		0/1
		0/1

4 A. Jensen

	2/2	1/1
2/2	1/1	1/1

1 post 1/1 lob

6 E. Klastrup

1/1		1/1

7 K. Hoppe

1/1		0/1
0/1		
1/2		

1 post 1 miss. 1/1 lob

9 A. Plougstrup

2/3	0/1	1/1

10 A. Schroder

11 A. Kristensen

15 J. Persson

2/2		
1/1		

18 E. Schleicher

1/1		

19 D. Michelsen

	0/1	
1/1		

21 S. Andersen

23 C. Hansen

		1/1
		1/1

24 C. Norskov

		0/1
5/5		

25 C. Veilgaard

1 miss.

TOTAL

4/4	2/3	2/4
0/1		0/2
13/15	1/2	4/4

2 post 2 miss. 2/2 lob

Saves distribution goalkeepers

16 F. Nielsen

0/2		1/2
0/1		
2/5	0/1	1/4

20 Z. Madsen

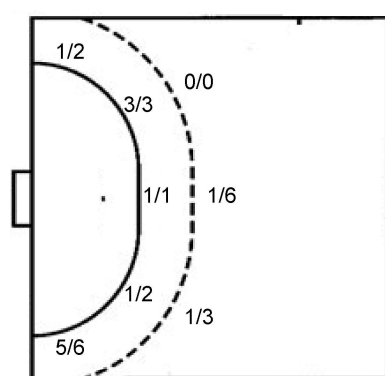
	1/1	0/3
0/1	2/2	
2/5	1/2	2/4

TOTAL

0/2	1/1	1/5
0/2	2/2	
4/10	1/3	3/8

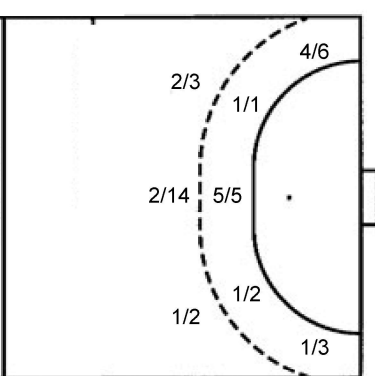
Shots by position

ATTACK



7m penalties 2/3
 Fastbreak 5/6
 Breakthrough 6/7
 Long dist. 1/1

DEFENSE



7m penalties 3/4
 Fastbreak 0/0
 Breakthrough 2/2
 Long dist. 0/0

Shooting statistics

Position	Goals	Sav.	Miss.	Post	Blk.	Total	%
Back (9m)	2	5	2	0	0	9	22
Line (6m)	5	1	0	0	0	6	83
Wing	6	1	0	1	0	8	75
7m penalties	2	1	0	0	0	3	67
Fastbreak	5	0	0	1	0	6	83
Breakthrough	6	1	0	0	0	7	86
Total	26	9	2	2	0	39	67

Jersey number Tot. Total shooting 6m 6m (line) shooting 9m 9m shooting Wng Wing shooting FB Fastbreak sh. 7m 7m penalty sh.
 Brk. Breakthrough sh. LD Long distance sh. As. Assists PC Pass clear chance E7 Earned 7m pen. TF Technical faults St. Steals
 2m 2m punishments C7. Committed 7m E2 Earned 2m pun. YC. Yellow cards R/B Red/Blue cards Blk. Blocks S Starting Line-up



10th IHF Women's Youth World Championship 2024



Group E, 3. round

Match Team Statistics
Match No. 37

Denmark 28 - 22 P.R. of China
(14 - 13) (14 - 9)

17.8.2024. 18:00
Attendance: 5050
International Handball Hall

Referees: Mihai Pirvu (ROU) / Mihai Potirniche (ROU)

P.R. of China

#	Surname and name	S	Goals / shots								Attack					Def.			Penalties			TP					
			Tot.	%	9m	6m	Wing	7m	FB	Brk.	LD	As.	PC	E7	E2	TF	St.	C7	Blk	YC	2m		R	B			
1	SUN Yihan																									6:39	
2	HU Jiabin																										13:22
3	PAN Fengying	S	1/5	20	0/3			0/1	1/1						3	1	1			5		1					44:06
5	HUANG Zidie	S	7/9	78	1/1	1/1	4/5	1/2													1	1			1		45:48
6	ZHANG Jingwen		3/9	33	1/7										3					5							33:16
8	LIANG Jing	S														1				2					1		23:47
9	XIN Ying	S	1/3	33				1/3																			39:20
10	LI Xinyi		3/6	50	2/5	1/1									2	1				2							43:01
11	YANG Jie		0/1	0		0/1														1							20:25
15	YANG Yue	S	5/5	100		5/5										1	1	1							2		50:06
16	HUANG Sitong	S																									51:19
17	LIU Yutong																										
18	ZHANG Jiarui		2/4	50	1/3			1/1							1		1			2							10:40
19	LI Ziai																				1						13:28
21	XING Ziyao																1	1	1								3:40
23	ZHENG Yun	S																				1					21:03
	Team / bench																			1							
	TOTAL		22/42	52	5/19	7/8	5/9	3/4	0/0	2/2	0/0				9	3	4	3	19	2	3	0	0	3	1	0	

#	Surname and name	Saves / shots								
		Tot.	%	9m	6m	Wing	7m	FB	Brk.	LD
1	SUN Yihan	1/6	17	1/1	0/1		0/1	0/1	0/1	0/1
16	HUANG Sitong	8/31	26	4/6	1/5	1/8	1/2	0/4	1/6	
	TOTAL	9/37	24	5/7	1/6	1/8	1/3	0/5	1/7	0/1

Coach: Qiang Shen

Number of attacks: 56, Efficiency: 39%, Average Duration: 34.38 seconds

Attack by type of defense

	Shots	9m	6m	Wing	TF	E7	E2
On def. 6-0	11/16	4/6	3/3	3/6	9	2	0
On def. 5-1	8/22	1/13	4/5	2/3	10	2	3
Fastbreak	0/0				0	0	0

Defense by type

	Total	9m	6m	Wing	Stl.	C7	2m
Def. 6-0	19/30	2/9	5/6	6/8	2	3	0
Fastbreak	5/6				0	0	3

Attack with superiority / minority / goalkeeper out

	Attack				Reaction		
	Att.	Eff.	Shots	TF	FB	LD	Tot.
7 on 6 (GK out)	3	33%	1/2	1	1/1	0/0	1/1
6 on 6 (GK out)	2	50%	1/1	1	0/1	0/0	0/1
6 on 6	42	36%	15/27	15			
5 on 6	2	50%	1/2	0			
6 on 5 (GK out)	1	0%	0/1	0	0/0	0/0	0/0
6 on 5	6	67%	4/4	2			

Player superiority / GK out counted at the end of attack (in case it changes during attack)

Defense with superiority / minority / goalkeeper out

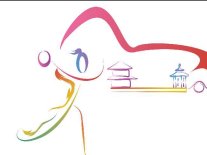
	Attack				Reaction		
	Att.	Eff.	Shots	TF	FB	LD	Tot.
6 on 6 (GK out)	5	40%	2/4	1	0/0	0/0	0/0
6 on 6	45	51%	23/32	13			
6 on 5	6	33%	2/4	2			
5 on 6	1	100%	1/1	0			

Numbers show attacking numbers of opponent. Lower efficiency of opponent means better defense of this team

Jersey number Tot. Total shooting 6m 6m (line) shooting 9m 9m shooting Wng Wing shooting FB Fastbreak sh. 7m 7m penalty sh.
Brk. Breakthrough sh. LD Long distance sh. As. Assists PC Pass clear chance E7 Earned 7m pen. TF Technical faults St. Steals
2m 2m punishments C7. Committed 7m E2 Earned 2m pun. YC. Yellow cards R/B Red/Blue cards Blk. Blocks S Starting Line-up



10th IHF Women's Youth World Championship 2024



Group E, 3. round

Match Team Statistics

Match No. 37

Denmark 28 - 22 P.R. of China

(14 - 13) (14 - 9)

17.8.2024. 18:00

Attendance: 5050

International Handball Hall

Referees: Mihai Pirvu (ROU) / Mihai Potirniche (ROU)

Shot distribution by player

2 J. Hu [3x3 grid]	3 F. Pan [3x3 grid] 1 miss. 2 block	5 Z. Huang [3x3 grid] 3/3 1/1 2/3 1 miss. 1/1 lob	6 J. Zhang [3x3 grid] 1/1 0/1 0/1 1/2 1/1 0/1 1 miss. 1 block	8 J. Liang [3x3 grid]	9 Y. Xin [3x3 grid] 1/3	10 X. Li [3x3 grid] 0/1 1/1 1/1 1/1 1 post 1 block
11 J. Yang [3x3 grid] 0/1	15 Y. Yang [3x3 grid] 1/1 2/2 1/1 1/1	17 Y. Liu [3x3 grid]	18 J. Zhang [3x3 grid] 1/1 0/1 0/1 1/1	19 Z. Li [3x3 grid]	21 Z. Xing [3x3 grid]	23 Y. Zheng [3x3 grid]

TOTAL

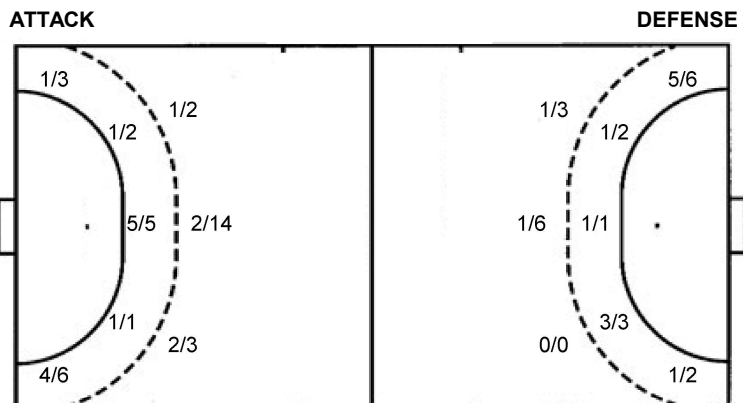
2/2	0/1	4/5
2/2	0/2	
6/10	2/3	5/8

1 post 3 miss. 4 block 1/1 lob

Saves distribution goalkeepers

1 Y. Sun [3x3 grid] 1/1 0/3 0/1	16 S. Huang [3x3 grid] 0/4 1/3 2/4 2/2 2/12 1/2 0/3	TOTAL [3x3 grid] 0/4 1/3 2/4 1/1 2/2 2/15 1/2 0/4
---	--	--

Shots by position



7m penalties	3/4	7m penalties	2/3
Fastbreak	0/0	Fastbreak	5/6
Breakthrough	2/2	Breakthrough	6/7
Long dist.	0/0	Long dist.	1/1

Shooting statistics

Position	Goals	Sav.	Miss.	Post	Blk.	Total	%
Back (9m)	5	7	2	1	4	19	26
Line (6m)	7	1	0	0	0	8	88
Wing	5	3	1	0	0	9	56
7m penalties	3	1	0	0	0	4	75
Fastbreak	0	0	0	0	0	0	0
Breakthrough	2	0	0	0	0	2	100
Total	22	12	3	1	4	42	52

Jersey number Tot. Total shooting 6m 6m (line) shooting 9m 9m shooting Wng Wing shooting FB Fastbreak sh. 7m 7m penalty sh.
 Brk. Breakthrough sh. LD Long distance sh. As. Assists PC Pass clear chance E7 Earned 7m pen. TF Technical faults St. Steals
 2m 2m punishments C7. Committed 7m E2 Earned 2m pun. YC. Yellow cards R/B Red/Blue cards Blk. Blocks S Starting Line-up

