



# 10th IHF Women's Youth World Championship 2024



Final Round, Finals

Match Team Statistics

Match No. 116

## Denmark 22 - 23 Spain

(11 - 9) (11 - 14)

25.8.2024. 18:00

Attendance: 6003

International Handball Hall

Referees: Kristof Altmar (HUN) / Marton Horvath (HUN)

### Denmark

#	Surname and name	S	Goals / shots								Attack				Def.			Penalties			TP		
			Tot.	%	9m	6m	Wing	7m	FB	Brk.	LD	As.	PC	E7	E2	TF	St.	C7	Blk	YC		2m	R
3	HEDEGAARD Cecilie Zimmer											1			1								16:22
4	JENSEN Andrea Bjertrup		1/2	50			0/1		1/1						1								21:32
6	KLASTRUP Emma Rogilds																						23:32
7	HOPPE Kirstine Emilie	S	2/9	22	0/6					1/2	1/1	2			3	1							40:58
9	PLOUGSTRUP Anne Dolberg	S	7/14	50	4/11			2/2	1/1			1			2	1							36:19
10	SCHRODER Andrea Münster																						1:01
11	KRISTENSEN Anna Mulbjerg	S	1/1	100			1/1										1						38:00
15	PERSSON Julie Groth	S	3/5	60	1/2				1/1	1/2		3		1	1	2							47:14
16	NIELSEN Freja Fonseca	S																					47:55
18	SCHLEICHER Emilie	S	3/4	75	2/3			1/1															38:50
19	MICHELTSEN Ditte Alnor	S	0/1	0		0/1								2	1	1	2			2			37:55
20	MADSEN Zenia Hald														1								9:22
21	ANDERSEN Signe Bang Sandager Roed		0/1	0	0/1																		2:55
23	HANSEN Caroline Friis		1/1	100	1/1							1		2	1	1	2						21:29
24	NORSKOV Cecilie Frydendahl		3/6	50	2/4			1/2							1								23:42
25	VEILGAARD Clara Bro		1/2	50	0/1				1/1			1			6								12:54
Team / bench																				1			
TOTAL			22/46	48	7/24	3/5	1/3	3/4	4/4	3/5	1/1	8	1	4	3	18	4	5	0	1	2	0	0

#	Surname and name	Saves / shots								
		Tot.	%	9m	6m	Wing	7m	FB	Brk.	LD
16	NIELSEN Freja Fonseca	11/32	34	3/6	3/6	2/4	1/4	0/2	2/10	
20	MADSEN Zenia Hald	2/3	67	2/2					0/1	
TOTAL		13/35	37	3/6	5/8	2/4	1/4	0/2	2/11	0/0

Coach: Ole Lund Bitsch

Number of attacks: 57, Efficiency: 39%, Average Duration: 30.28 seconds

### Attack by type of defense

	Shots	9m	6m	Wing	TF	E7	E2
On def. 6-0	13/31	6/19	3/4	1/3	15	4	3
On def. 5-1	1/6	1/5	0/1	0/0	3	0	0
Fastbreak	4/4				0	0	0

### Defense by type

	Total	9m	6m	Wing	Stl.	C7	2m
Def. 6-0	17/32	3/7	3/10	2/3	3	4	0
Def. 5-1	0/3	0/0	0/1	0/1	1	1	0
Def. press.	0/2	0/0	0/1	0/0	0	0	0
Fastbreak	2/2				0	0	2

### Attack with superiority / minority / goalkeeper out

	Attack				Reaction		
	Att.	Eff.	Shots	TF	FB	LD	Tot.
7 on 6 (GK out)	1	0%	0/1	0	0/0	0/0	0/0
6 on 6 (GK out)	3	33%	1/2	1	0/0	1/1	1/1
6 on 6	48	38%	18/31	17			
6 on 5	1	100%	1/1	0			
6 on 4	3	67%	2/3	0			
5 on 6	1	0%	0/1	0			

Player superiority / GK out counted at the end of attack (in case it changes during attack)

### Defense with superiority / minority / goalkeeper out

	Attack				Reaction		
	Att.	Eff.	Shots	TF	FB	LD	Tot.
6 on 6 (GK out)	2	50%	1/1	1	0/0	0/0	0/0
6 on 6	49	35%	17/36	13			
4 on 6	2	0%	0/0	2			
6 on 5	5	100%	5/5	0			

Numbers show attacking numbers of opponent. Lower efficiency of opponent means better defense of this team

# Jersey number Tot. Total shooting 6m 6m (line) shooting 9m 9m shooting Wng Wing shooting FB Fastbreak sh. 7m 7m penalty sh.  
 Brk. Breakthrough sh. LD Long distance sh. As. Assists PC Pass clear chance E7 Earned 7m pen. TF Technical faults St. Steals  
 2m 2m punishments C7. Committed 7m E2 Earned 2m pun. YC. Yellow cards R/B Red/Blue cards Blk. Blocks S Starting Line-up



# 10th IHF Women's Youth World Championship 2024



Final Round, Finals

## Match Team Statistics

Match No. 116

## Denmark 22 - 23 Spain

(11 - 9) (11 - 14)

25.8.2024. 18:00

Attendance: 6003

International Handball Hall

Referees: Kristof Altmar (HUN) / Marton Horvath (HUN)

## Shot distribution by player

### 3 C. Hedegaard


### 4 A. Jensen

		1/1

1 post

### 6 E. Klastrup


### 7 K. Hoppe

		0/1
1/1	0/1	
0/1	0/1	1/1

1 post 2 block

### 9 A. Plougstrup

2/2		1/1
0/1		
4/4		

3 miss. 3 block

### 10 A. Schroder


### 11 A. Kristensen

	1/1	

### 15 J. Persson

3/3		

1 post 1 block

### 18 E. Schleicher

1/1		
1/1		1/1

1 miss.

### 19 D. Michelsen

0/1		

### 21 S. Andersen


1 miss.

### 23 C. Hansen

	1/1	

### 24 C. Norskov

2/2	0/1	1/1

1 post 1 block

### 25 C. Veilgaard

	1/1	
0/1		

## TOTAL

6/6		1/2
2/4	0/1	
7/9	2/4	4/4

4 post 5 miss. 7 block

## Saves distribution goalkeepers

### 16 F. Nielsen

0/2	1/3	0/2
3/4	1/1	4/5
0/2	0/2	2/9

### 20 Z. Madsen

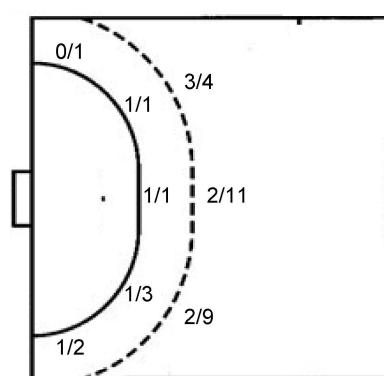
0/1		
1/1		1/1

## TOTAL

0/3	1/3	0/2
4/5	1/1	5/6
0/2	0/2	2/9

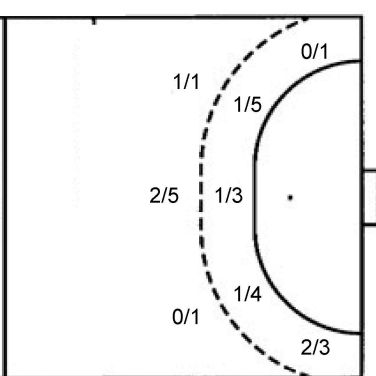
## Shots by position

### ATTACK



7m penalties 3/4  
Fastbreak 4/4  
Breakthrough 3/5  
Long dist. 1/1

### DEFENSE



7m penalties 3/5  
Fastbreak 2/2  
Breakthrough 9/14  
Long dist. 1/1

## Shooting statistics

Position	Goals	Sav.	Miss.	Post	Blk.	Total	%
Back (9m)	7	4	4	2	7	24	29
Line (6m)	3	1	1	0	0	5	60
Wing	1	1	0	1	0	3	33
7m penalties	3	1	0	0	0	4	75
Fastbreak	4	0	0	0	0	4	100
Breakthrough	3	1	0	1	0	5	60
<b>Total</b>	<b>21</b>	<b>8</b>	<b>5</b>	<b>4</b>	<b>7</b>	<b>45</b>	<b>47</b>

# Jersey number Tot. Total shooting 6m 6m (line) shooting 9m 9m shooting Wng Wing shooting FB Fastbreak sh. 7m 7m penalty sh.  
Brk. Breakthrough sh. LD Long distance sh. As. Assists PC Pass clear chance E7 Earned 7m pen. TF Technical faults St. Steals  
2m 2m punishments C7. Committed 7m E2 Earned 2m pun. YC. Yellow cards R/B Red/Blue cards Blk. Blocks S Starting Line-up

Handball statistics and livescore by Toma-soft ltd (www.toma-soft.hr)



# 10th IHF Women's Youth World Championship 2024



Final Round, Finals

Match Team Statistics  
Match No. 116

Denmark 22 - 23 Spain  
(11 - 9) (11 - 14)

25.8.2024. 18:00  
Attendance: 6003  
International Handball Hall

Referees: Kristof Altmar (HUN) / Marton Horvath (HUN)

## Spain

#	Surname and name	S	Goals / shots								Attack				Def.			Penalties			TP							
			Tot.	%	9m	6m	Wing	7m	FB	Brk.	LD	As.	PC	E7	E2	TF	St.	C7	Blk	YC		2m	R	B				
1	GASSAMA CISSOKHO Goundo	S													1												54:22	
2	ROS QUESADA Anna																										0:06	
3	FONKENG MFOTI OG Kelly Nnonzie	S	0/1	0		0/1										1						1					49:35	
4	ARRUABARRENA GAZTANAZPI Libe																										11:41	
5	RODRIGUEZ SARASOLA Estixu	S	4/9	44	0/1	0/2									2	1	1			3	1	1					48:08	
6	REGORDAN SILVA Marta	S	5/8	63		1/2				2/2					2	2				3		1					33:35	
7	RODRIGUEZ LARIO Belen	S	8/12	67	2/2	1/3				1/2										2	2	2	2				48:58	
8	JALLOW DIALLO Kadidiatou																										5:20	
9	SOLIS RODRIGUEZ Nayra	S	3/5	60		0/1	1/2			2/2										1							35:38	
10	PATINO LIMES Nerea		1/5	20	1/4	0/1									1	1				2	2		1				27:45	
11	TORRES CABELLO Elena	S	1/1	100		1/1														1		1		1			37:53	
12	BERNABE COBOS Udane																										5:11	
15	GARCIA SANCHEZ Celia		0/2	0			0/1	0/1													3		1			1		24:37
17	BAQUEDANO MEZQUIRIZ Naroa		0/1	0		0/1									1		1			2		1			1		16:23	
18	GONZALEZ MARTINEZ Judit																										1:18	
19	PALANQUÉS MARTORELL Sara		1/1	100			1/1																				19:30	
Team / bench																											1	
TOTAL			23/45	51	3/7	3/12	2/4	3/5	2/2	9/14	1/1	7	4	5	2	16	7	4	7	1	4	0	0					

Goalkeepers		Saves / shots								
#	Surname and name	Tot.	%	9m	6m	Wing	7m	FB	Brk.	LD
1	GASSAMA CISSOKHO Goundo	5/22	23	4/11	1/4	0/1		0/3	0/3	
12	BERNABE COBOS Udane	3/7	43			1/1	1/4	0/1	1/1	
TOTAL		8/29	28	4/11	1/4	1/2	1/4	0/4	1/4	0/0

Coach: Cristina Cabeza Gutierrez

Number of attacks: 58, Efficiency: 40%, Average Duration: 32.27 seconds

## Attack by type of defense

	Shots	9m	6m	Wing	TF	E7	E2
On def. 6-0	17/32	3/7	3/10	2/3	12	4	2
On def. 5-1	0/3	0/0	0/1	0/1	4	1	0
On def. press.	0/2	0/0	0/1	0/0	0	0	0
Fastbreak	2/2				0	0	0

## Defense by type

	Total	9m	6m	Wing	Stl.	C7	2m
Def. 6-0	13/31	6/19	3/4	1/3	4	4	0
Def. 5-1	1/6	1/5	0/1	0/0	3	0	0
Fastbreak	4/4				0	0	4

## Attack with superiority / minority / goalkeeper out

	Attack				Reaction		
	Att.	Eff.	Shots	TF	FB	LD	Tot.
6 on 6 (GK out)	2	50%	1/1	1	0/0	0/0	0/0
6 on 6	49	35%	17/36	13			
4 on 6	2	0%	0/0	2			
6 on 5	5	100%	5/5	0			

Player superiority / GK out counted at the end of attack (in case it changes during attack)

## Defense with superiority / minority / goalkeeper out

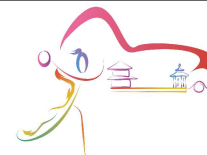
	Attack				Reaction		
	Att.	Eff.	Shots	TF	FB	LD	Tot.
7 on 6 (GK out)	1	0%	0/1	0	0/0	0/0	0/0
6 on 6 (GK out)	3	33%	1/2	1	0/0	1/1	1/1
6 on 6	48	38%	18/31	17			
6 on 5	1	100%	1/1	0			
6 on 4	3	67%	2/3	0			
5 on 6	1	0%	0/1	0			

Numbers show attacking numbers of opponent. Lower efficiency of opponent means better defense of this team

# Jersey number Tot. Total shooting 6m 6m (line) shooting 9m 9m shooting Wng Wing shooting FB Fastbreak sh. 7m 7m penalty sh.  
Brk. Breakthrough sh. LD Long distance sh. As. Assists PC Pass clear chance E7 Earned 7m pen. TF Technical faults St. Steals  
2m 2m punishments C7. Committed 7m E2 Earned 2m pun. YC. Yellow cards R/B Red/Blue cards Blk. Blocks S Starting Line-up



# 10th IHF Women's Youth World Championship 2024



Final Round, Finals

## Match Team Statistics

Match No. 116

## Denmark 22 - 23 Spain

(11 - 9) (11 - 14)

25.8.2024. 18:00

Attendance: 6003

International Handball Hall

Referees: Kristof Altmar (HUN) / Marton Horvath (HUN)

### Shot distribution by player

2 A. Ros Quesada


3 K. Fonkeng Mfotio

0/1		

4 L. Arruabarrena Gaztanazpi


5 E. Rodriguez Sarasola

		1/1
2/2		1/1
1/1		0/2

2 post 1 miss.

6 M. Regordan Silva

		1/1
0/1		0/1
1/1	1/1	2/3

7 B. Rodriguez Lario

1/1	1/1	
0/2	1/1	1/2
	1/1	3/3

1 miss.

8 K. Jallow Diallo


9 N. Solis Rodriguez

		0/1
1/1		

1 post 2/2 lob

10 N. Patino Limes

		0/1
		1/2

1 post 1 miss.

11 E. Torres Cabello

		1/1

15 C. Garcia Sanchez

	0/1	

1 miss.

17 N. Baquedano Mezquiriz


1 post

18 J. Gonzalez Martinez


19 S. Palanques Martorell

	1/1	

### TOTAL

3/3	2/3	2/2
1/5	1/2	1/6
2/2	2/2	7/9

5 post 4 miss. 2/2 lob

### Saves distribution goalkeepers

1 G. Gassama Cissokho

0/5		0/1
1/2	1/1	
2/6	1/3	0/4

12 U. Bernabe Cobos

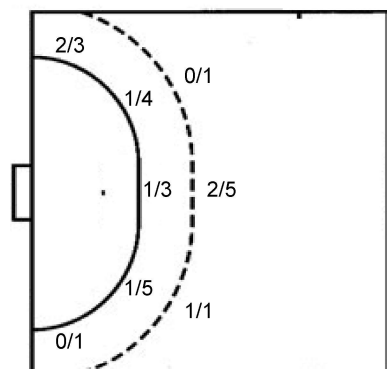
0/1		1/1
1/1		
0/3	1/1	

### TOTAL

0/6		1/2
2/3	1/1	
2/9	2/4	0/4

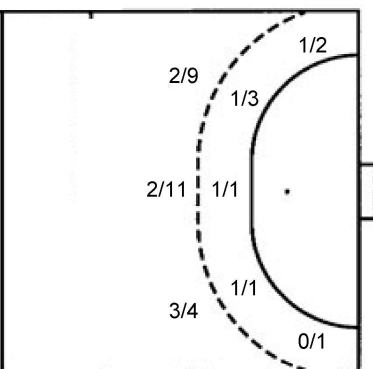
### Shots by position

#### ATTACK



7m penalties 3/5  
Fastbreak 2/2  
Breakthrough 9/14  
Long dist. 1/1

#### DEFENSE



7m penalties 3/4  
Fastbreak 4/4  
Breakthrough 3/5  
Long dist. 1/1

### Shooting statistics

Position	Goals	Sav.	Miss.	Post	Blk.	Total	%
Back (9m)	3	3	1	0	0	7	43
Line (6m)	3	5	0	4	0	12	25
Wing	2	2	0	0	0	4	50
7m penalties	3	1	1	0	0	5	60
Fastbreak	2	0	0	0	0	2	100
Breakthrough	9	2	2	1	0	14	64
<b>Total</b>	<b>22</b>	<b>13</b>	<b>4</b>	<b>5</b>	<b>0</b>	<b>44</b>	<b>50</b>

# Jersey number Tot. Total shooting 6m 6m (line) shooting 9m 9m shooting Wng Wing shooting FB Fastbreak sh. 7m 7m penalty sh.  
Brk. Breakthrough sh. LD Long distance sh. As. Assists PC Pass clear chance E7 Earned 7m pen. TF Technical faults St. Steals  
2m 2m punishments C7. Committed 7m E2 Earned 2m pun. YC. Yellow cards R/B Red/Blue cards Blk. Blocks S Starting Line-up

Handball statistics and livescore by Toma-soft ltd (www.toma-soft.hr)

