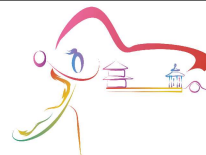




10th IHF Women's Youth World Championship 2024



Final Round, 5-6. place

Match Team Statistics

Match No. 114

Germany 28 - 23 Serbia

(15 - 10) (13 - 13)

25.8.2024. 13:00

Attendance: 1000

International Handball Hall

Referees: Yufeng Cheng (CHN) / Yunlei Zhou (CHN)

Germany

Players		Goals / shots									Attack					Def.			Penalties				TP		
#	Surname and name	S	Tot.	%	9m	6m	Wing	7m	FB	Brk.	LD	As.	PC	E7	E2	TF	St.	C7	Blk	YC	2m	R		B	
1	STEINECKE Lina																								
3	WALTHER Jana	S	0/3	0			0/3																		30:00
4	OTT Leila		1/2	50			1/2																		30:00
6	WERLE Alissa																								
7	ROHR Chiara	S	8/9	89	1/1	2/2	3/4		1/1	1/1															58:25
9	CHRISTIANSEN Lotta		0/2	0						0/2		1	1			2					1				34:45
10	HEIMANN Frida	S	1/3	33		1/3										1									32:58
13	BORNHARDT Aylin	S	5/7	71		1/3			4/4								1					1			28:34
14	KERN Marleen		1/5	20	1/4	0/1						1	1			1									25:11
15	BERENS Lena		0/2	0	0/2							1				3									25:20
16	LINDEMANN Lena Marie	S	1/1	100							1/1	2				1									58:35
18	KLOCKE Laura Sophie																								
19	LÜCK Lin Elisabeth	S																			1				34:40
20	TUCHOLKE Marlene		3/6	50	2/5					1/1		1	1			2	3					1			11:18
21	OTT Kim	S	8/13	62	7/12	1/1						4	4			3	2				1				50:11
Team / bench																									
TOTAL			28/53	53	11/24	5/10	4/9	0/0	5/5	2/4	1/1	10	7	0	0	13	6	0	2	1	2	0	0		

Goalkeepers		Saves / shots								
#	Surname and name	Tot.	%	9m	6m	Wing	7m	FB	Brk.	LD
1	STEINECKE Lina									
16	LINDEMANN Lena Marie	13/36	36	4/8	3/15	2/5		2/2	2/6	
TOTAL		13/36	36	4/8	3/15	2/5	0/0	2/2	2/6	0/0

Coach: Eugenius Smits

Number of attacks: 62, Efficiency: 45%, Average Duration: 25.48 seconds

Attack by type of defense

	Shots	9m	6m	Wing	TF	E7	E2
On def. 6-0	13/30	9/18	1/5	2/5	10	0	0
On def. 5-1	9/17	2/6	4/5	2/4	3	0	0
Fastbreak	5/5				0	0	0

Defense by type

	Total	9m	6m	Wing	Stl.	C7	2m
Def. 6-0	22/39	4/10	12/17	3/6	6	0	0
Def. 5-1	1/2	0/1	0/0	0/0	0	0	0
Fastbreak	0/4				0	0	2

Attack with superiority / minority / goalkeeper out

	Attack				Reaction		
	Att.	Eff.	Shots	TF	FB	LD	Tot.
6 on 6 (GK out)	3	0%	0/3	0	0/0	0/0	0/0
6 on 6	55	47%	26/43	12			
6 on 5	4	50%	2/3	1			

Player superiority / GK out counted at the end of attack (in case it changes during attack)

Defense with superiority / minority / goalkeeper out

	Attack				Reaction		
	Att.	Eff.	Shots	TF	FB	LD	Tot.
6 on 6 (GK out)	2	0%	0/1	1	0/0	1/1	1/1
6 on 6	56	38%	21/39	17			
5 on 6	1	0%	0/0	1			
6 on 5	2	50%	1/1	1			
6 on 4	1	100%	1/1	0			

Numbers show attacking numbers of opponent. Lower efficiency of opponent means better defense of this team

Jersey number Tot. Total shooting 6m 6m (line) shooting 9m 9m shooting Wng Wing shooting FB Fastbreak sh. 7m 7m penalty sh.
 Brk. Breakthrough sh. LD Long distance sh. As. Assists PC Pass clear chance E7 Earned 7m pen. TF Technical faults St. Steals
 2m 2m punishments C7. Committed 7m E2 Earned 2m pun. YC. Yellow cards R/B Red/Blue cards Blk. Blocks S Starting Line-up



10th IHF Women's Youth World Championship 2024



Final Round, 5-6. place

Match Team Statistics

Match No. 114

Germany 28 - 23 Serbia

(15 - 10) (13 - 13)

25.8.2024. 13:00

Attendance: 1000

International Handball Hall

Referees: Yufeng Cheng (CHN) / Yunlei Zhou (CHN)

Shot distribution by player

3 J. Walther

0/1		0/1

1 miss.

4 L. Ott

		0/1
		1/1

6 A. Werle

7 C. Rohr

		2/3
1/1		1/1
	1/1	3/3

9 L. Christiansen

0/1		

1 miss.

10 F. Heimann

1/1		

2 post

13 A. Bornhardt

1/1		
2/3		
		1/1

1 miss. 1/1 lob

14 M. Kern

		1/2
0/1		0/1

1 miss.

15 L. Berens

		0/1
		0/1

18 L. Klocke

19 L. Lück

20 M. Tucholke

		1/1
0/1		1/1
0/1		1/1

1 miss.

21 K. Ott

1/1		2/2
		2/2
2/2		1/1

1 post 2 miss. 2 block

TOTAL

2/3		6/8
3/5		4/6
3/4	1/3	7/10

3 post 7 miss. 2 block 1/1 lob

Saves distribution goalkeepers

1 L. Steinecke

16 L. Lindemann

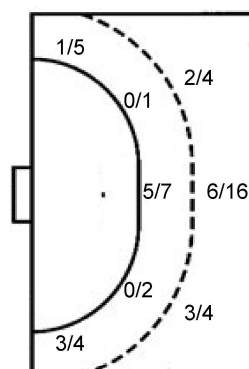
1/5	1/1	0/1
1/2	1/1	3/3
3/7	1/2	2/14

TOTAL

1/5	1/1	0/1
1/2	1/1	3/3
3/7	1/2	2/14

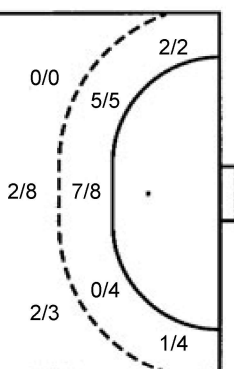
Shots by position

ATTACK



7m penalties	0/0
Fastbreak	5/5
Breakthrough	2/4
Long dist.	1/1

DEFENSE



7m penalties	0/0
Fastbreak	0/4
Breakthrough	4/7
Long dist.	0/0

Shooting statistics

Position	Goals	Sav.	Miss.	Post	Blk.	Total	%
Back (9m)	11	6	4	1	2	24	46
Line (6m)	5	2	1	2	0	10	50
Wing	4	4	1	0	0	9	44
7m penalties	0	0	0	0	0	0	0
Fastbreak	5	0	0	0	0	5	100
Breakthrough	2	1	1	0	0	4	50
Total	27	13	7	3	2	52	52

Jersey number Tot. Total shooting 6m 6m (line) shooting 9m 9m shooting Wng Wing shooting FB Fastbreak sh. 7m 7m penalty sh.
 Brk. Breakthrough sh. LD Long distance sh. As. Assists PC Pass clear chance E7 Earned 7m pen. TF Technical faults St. Steals
 2m 2m punishments C7. Committed 7m E2 Earned 2m pun. YC. Yellow cards R/B Red/Blue cards Blk. Blocks S Starting Line-up

Handball statistics and livescore by Toma-soft ltd (www.toma-soft.hr)



10th IHF Women's Youth World Championship 2024



Final Round, 5-6. place

Match Team Statistics
Match No. 114

Germany 28 - 23 Serbia
(15 - 10) (13 - 13)

25.8.2024. 13:00
Attendance: 1000
International Handball Hall

Referees: Yufeng Cheng (CHN) / Yunlei Zhou (CHN)

Serbia

#	Surname and name	S	Goals / shots								Attack				Def.			Penalties				TP			
			Tot.	%	9m	6m	Wing	7m	FB	Brk.	LD	As.	PC	E7	E2	TF	St.	C7	Blk	YC	2m		R	B	
2	DRINIĆ Sara																								0:45
3	NEDELJKOVIĆ Mia	S	2/7	29			1/4		0/1	1/2													1		38:33
5	MOMČILOVIĆ Milica																								8:43
6	PETRIĆ Helena																						1		18:58
7	ŠERIFI Sabina	S	0/1	0					0/1																25:35
10	KREZOVIĆ Aleksandra		4/4	100		4/4																	1		28:05
15	RADOVIĆ Sara	S	5/10	50	2/6	1/1				2/3				2	3								4	1	34:38
16	PETROVIĆ Anja																								
18	JANKOVIĆ Lena	S	1/3	33	0/1	1/1			0/1					2	1		1	2						1	49:57
19	MILOSAVLJEVIĆ Leana		1/2	50		1/2								5	1			4							21:08
22	OTASEVIĆ Milica																								
25	STANIĆ Lara	S	4/9	44	2/4	1/3				1/2				1	1		1	2	1						51:55
37	TASIĆ Milica	S	3/5	60		3/5																		1	37:08
44	ĐEKIĆ Mia		3/4	75		1/1	2/2		0/1														1		44:44
77	TANOVIĆ Jana																								
91	ČINKU Tatjana	S																						1	58:30
	Team / bench																								
	TOTAL		23/45	51	4/11	12/17	3/6	0/0	0/4	4/7	0/0			10	6	0	2	20	4	0	2	0	2	0	0

#	Surname and name	Saves / shots								
		Tot.	%	9m	6m	Wing	7m	FB	Brk.	LD
16	PETROVIĆ Anja									
77	TANOVIĆ Jana									
91	ČINKU Tatjana	13/40	33	6/17	2/7	4/8		0/5	1/3	
	TOTAL	13/40	33	6/17	2/7	4/8	0/0	2/5	1/3	0/0

Coach: Zoran Barbulović

Number of attacks: 62, Efficiency: 37%, Average Duration: 32.31 seconds

Attack by type of defense

	Shots	9m	6m	Wing	TF	E7	E2
On def. 6-0	22/39	4/10	12/17	3/6	18	0	2
On def. 5-1	1/2	0/1	0/0	0/0	2	0	0
Fastbreak	0/4				0	0	0

Defense by type

	Total	9m	6m	Wing	Stl.	C7	2m
Def. 6-0	13/30	9/18	1/5	2/5	3	0	0
Def. 5-1	9/17	2/6	4/5	2/4	1	0	0
Fastbreak	5/5				0	0	2

Attack with superiority / minority / goalkeeper out

	Attack				Reaction		
	Att.	Eff.	Shots	TF	FB	LD	Tot.
6 on 6 (GK out)	2	0%	0/1	1	0/0	1/1	1/1
6 on 6	56	38%	21/39	17			
5 on 6	1	0%	0/0	1			
6 on 5	2	50%	1/1	1			
6 on 4	1	100%	1/1	0			

Player superiority / GK out counted at the end of attack (in case it changes during attack)

Defense with superiority / minority / goalkeeper out

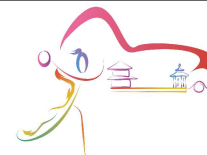
	Attack				Reaction		
	Att.	Eff.	Shots	TF	FB	LD	Tot.
6 on 6 (GK out)	3	0%	0/3	0	0/0	0/0	0/0
6 on 6	55	47%	26/43	12			
6 on 5	4	50%	2/3	1			

Numbers show attacking numbers of opponent. Lower efficiency of opponent means better defense of this team

Jersey number Tot. Total shooting 6m 6m (line) shooting 9m 9m shooting Wng Wing shooting FB Fastbreak sh. 7m 7m penalty sh.
Brk. Breakthrough sh. LD Long distance sh. As. Assists PC Pass clear chance E7 Earned 7m pen. TF Technical faults St. Steals
2m 2m punishments C7. Committed 7m E2 Earned 2m pun. YC. Yellow cards R/B Red/Blue cards Blk. Blocks S Starting Line-up



10th IHF Women's Youth World Championship 2024



Final Round, 5-6. place

Match Team Statistics

Match No. 114

Germany 28 - 23 Serbia

(15 - 10) (13 - 13)

25.8.2024. 13:00

Attendance: 1000

International Handball Hall

Referees: Yufeng Cheng (CHN) / Yunlei Zhou (CHN)

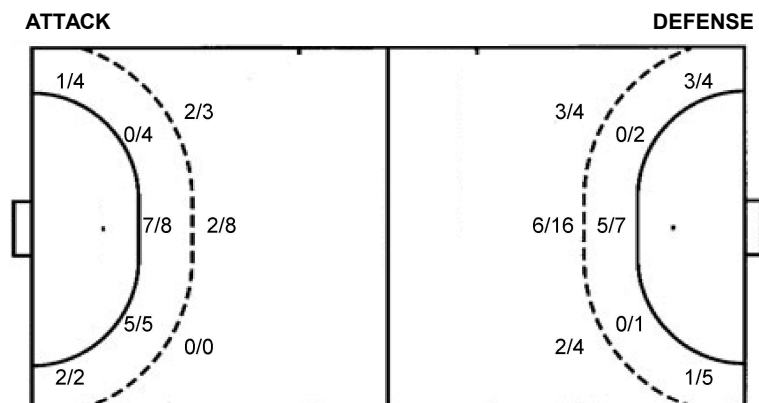
Shot distribution by player

2 S. Drnić [Table with 3 columns, 3 rows]	3 M. Nedeljković [Table with 3 columns, 3 rows] 1 post 1 miss.	5 M. Momčilović [Table with 3 columns, 3 rows]	6 H. Petrić [Table with 3 columns, 3 rows]	7 S. Šerifi [Table with 3 columns, 3 rows] 1 miss.	10 A. Krezović [Table with 3 columns, 3 rows]	15 S. Radović [Table with 3 columns, 3 rows] 2 block
18 L. Janković [Table with 3 columns, 3 rows]	19 L. Milosavljević [Table with 3 columns, 3 rows] 1 miss.	22 M. Otašević [Table with 3 columns, 3 rows]	25 L. Stanić [Table with 3 columns, 3 rows] 1 miss.	37 M. Tasić [Table with 3 columns, 3 rows] 1 miss.	44 M. Đekić [Table with 3 columns, 3 rows] 1 miss.	TOTAL [Table with 3 columns, 3 rows] 1 post 6 miss. 2 block

Saves distribution goalkeepers

16 A. Petrović [Table with 3 columns, 3 rows]	77 J. Tanović [Table with 3 columns, 3 rows]	91 T. Činku [Table with 3 columns, 3 rows]	TOTAL [Table with 3 columns, 3 rows]
---	--	--	--

Shots by position



7m penalties 0/0
Fastbreak 0/4
Breakthrough 4/7
Long dist. 0/0

7m penalties 0/0
Fastbreak 5/5
Breakthrough 2/4
Long dist. 1/1

Shooting statistics

Position	Goals	Sav.	Miss.	Post	Blk.	Total	%
Back (9m)	4	4	1	0	2	11	36
Line (6m)	12	3	2	0	0	17	71
Wing	3	2	0	1	0	6	50
7m penalties	0	0	0	0	0	0	0
Fastbreak	0	2	2	0	0	4	0
Breakthrough	4	2	1	0	0	7	57
Total	23	13	6	1	2	45	51

Jersey number Tot. Total shooting 6m 6m (line) shooting 9m 9m shooting Wng Wing shooting FB Fastbreak sh. 7m 7m penalty sh.
Brk. Breakthrough sh. LD Long distance sh. As. Assists PC Pass clear chance E7 Earned 7m pen. TF Technical faults St. Steals
2m 2m punishments C7. Committed 7m E2 Earned 2m pun. YC. Yellow cards R/B Red/Blue cards Blk. Blocks S Starting Line-up

