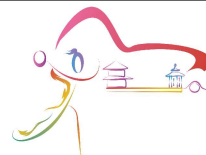




10th IHF Women's Youth World Championship 2024



Final Round, 25-26. place

Match Team Statistics

Match No. 112

Angola 21 - 36 Iceland

(11 - 18) (10 - 18)

23.8.2024. 18:00

Attendance: 600

Vocational and Technical College

Referees: Henrique Godoy (BRA) / Daniel Magalhaes da Silva (BRA)

Angola

#	Surname and name	S	Goals / shots								Attack				Def.			Penalties			TP				
			Tot.	%	9m	6m	Wing	7m	FB	Brk.	LD	As.	PC	E7	E2	TF	St.	C7	Blk	YC		2m	R	B	
1	DOMINGOS Kelvia Maria Hossi		1/1	100																					13:05
2	LUSSENDE Carla Beatriz	S	0/1	0	0/1										1										29:10
4	NUNES Ivete Alexandra Bravo	S	1/3	33	0/1	1/2									3					1					19:56
5	BUMBA Rubi Leandra Correia	S	1/2	50			1/1		0/1								2								44:16
7	CASTRO Maria Canga De															2									7:20
8	PEREIRA Beatriz Bundo Calepete										1		1			2									19:36
9	MALAGI Arisia Helena Bambi	S																1							44:59
10	DOMINGOS Constantina Manuel		1/6	17	0/3	1/2				0/1	1	1	2		6	1									34:13
11	CAMBUTA Paloma Bianca Bandeira																								
12	MAIA Joice Dos Santos																								0:20
15	PAULINO Patricia Rossana Pascoal		1/2	50		1/2									1	1			2						39:58
20	MANUEL Vilma Da Cunha		6/10	60	5/9	1/1									1										37:49
22	DOMINGOS Elizandra Helena Lopes	S																							46:35
23	AFONSO Matutzila Nsimba Miguel	S	0/2	0	0/1					0/1					2				1						15:02
32	LOPES Sandra Dinamene Kukubica		1/2	50				1/2																	15:32
90	NUNDA Balbina Cassova Afonsa	S	9/20	45	6/14	2/4			0/1		1				7										51:28
	Team / bench																						1		
	UKUPNO		21/49	43	11/29	6/11	1/1	1/3	0/1	1/3	1/1	3	1	3	0	25	4	1	3	1	1	0	0		

#	Surname and name	Saves / shots								
		Tot.	%	9m	6m	Wing	7m	FB	Brk.	LD
1	DOMINGOS Kelvia Maria Hossi	3/10	30	2/6	0/1	1/2		0/1		
12	MAIA Joice Dos Santos	0/1	0				0/1			
22	DOMINGOS Elizandra Helena Lopes	9/37	24	3/12	2/13	3/6		0/3	1/3	
	TOTAL	12/48	25	5/18	2/14	4/8	0/1	0/4	1/3	0/0

Coach:

Number of attacks: 69, Efficiency: 30%, Average Duration: 27.45 seconds

Attack by type of defense

	Shots	9m	6m	Wing	TF	E7	E2
On def. 6-0	13/29	9/23	2/3	1/1	14	1	0
On def. 5-1	6/15	2/6	4/8	0/0	11	2	0
Fastbreak	0/1				0	0	0

Defense by type

	Total	9m	6m	Wing	Stl.	C7	2m
Def. 6-0	6/13	4/9	2/3	0/1	1	0	0
Def. 5-1	19/32	9/16	6/7	3/7	3	1	0
Def. 4-2	5/5	0/0	3/3	1/1	0	0	0
Def. 3-3	1/1	0/0	1/1	0/0	0	0	0
Def. press.	0/1	0/1	0/0	0/0	0	0	0
Fastbreak	4/4				0	0	1

Attack with superiority / minority / goalkeeper out

	Attack				Reaction		
	Att.	Eff.	Shots	TF	FB	LD	Tot.
6 on 6	67	31%	21/43	24			
5 on 6	2	0%	0/1	1			

Player superiority / GK out counted at the end of attack (in case it changes during attack)

Defense with superiority / minority / goalkeeper out

	Attack				Reaction		
	Att.	Eff.	Shots	TF	FB	LD	Tot.
7 on 6 (GK out)	5	20%	1/3	2	0/0	1/1	1/1
6 on 6	60	57%	34/48	12			
6 on 5	2	50%	1/1	1			

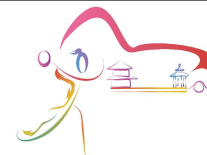
Numbers show attacking numbers of opponent. Lower efficiency of opponent means better defense of this team

Jersey number Tot. Total shooting 6m 6m (line) shooting 9m 9m shooting Wng Wing shooting FB Fastbreak sh. 7m 7m penalty sh.
 Brk. Breakthrough sh. LD Long distance sh. As. Assists PC Pass clear chance E7 Earned 7m pen. TF Technical faults St. Steals
 2m 2m punishments C7. Committed 7m E2 Earned 2m pun. YC. Yellow cards R/B Red/Blue cards Blk. Blocks S Starting Line-up

Handball statistics and livescore by Toma-soft ltd (www.toma-soft.hr)



10th IHF Women's Youth World Championship 2024



Final Round, 25-26. place

Match Team Statistics

Match No. 112

Angola 21 - 36 Iceland

(11 - 18) (10 - 18)

23.8.2024. 18:00

Attendance: 600

Vocational and Technical College

Referees: Henrique Godoy (BRA) / Daniel Magalhaes da Silva (BRA)

Shot distribution by player

2 C. Lussende

	0/1	

4 I. Nunes

		1/1
0/1	0/1	

5 R. Bumba

	0/1	

1/1 lob

7 M. Castro

8 B. Pereira

9 A. Malagi

10 C. Domingos

0/1	0/1	0/1
	1/1	0/1

1 miss.

11 P. Cambuta

15 P. Paulino

	0/1	
1/1		

20 V. Manuel

1/1		
1/1		
4/4	0/2	

1 post 1 miss.

23 M. Afonso

2 post

32 S. Lopes

1/1		0/1

90 B. Nunda

1/1		
1/1		0/1
2/3	2/4	2/3

3 post 2 miss. 1 block 1/1 lob

TOTAL

2/2		
2/5	0/2	1/3
8/10	3/6	2/7

6 post 4 miss. 1 block 2/2 lob

Saves distribution goalkeepers

1 K. Domingos

		0/1
0/1		3/4
0/3		0/1

12 J. Maia

		0/1

22 E. Domingos

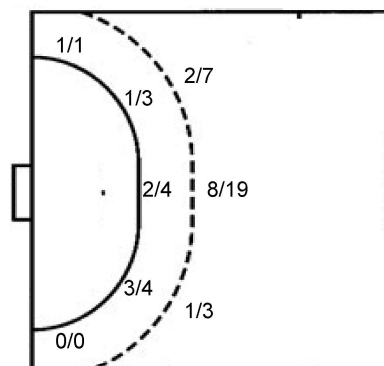
0/1	1/2	0/3
2/5	1/1	1/3
3/11	1/2	0/8

TOTAL

0/1	1/2	0/4
2/6	1/1	4/7
3/14	1/2	0/10

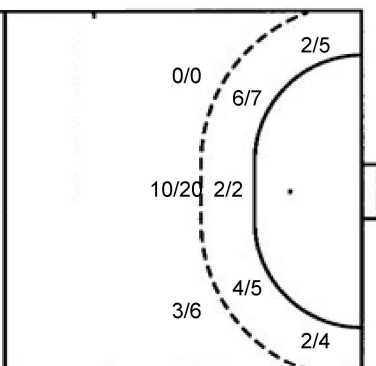
Shots by position

ATTACK



7m penalties 1/3
 Fastbreak 0/1
 Breakthrough 1/3
 Long dist. 1/1

DEFENSE



7m penalties 1/1
 Fastbreak 4/4
 Breakthrough 2/3
 Long dist. 0/0

Shooting statistics

Position	Goals	Sav.	Miss.	Post	Blk.	Total	%
Back (9m)	11	10	3	4	1	29	38
Line (6m)	6	4	1	0	0	11	55
Wing	1	0	0	0	0	1	100
7m penalties	1	1	0	1	0	3	33
Fastbreak	0	1	0	0	0	1	0
Breakthrough	1	1	0	1	0	3	33
Total	20	17	4	6	1	48	42

Jersey number Tot. Total shooting 6m 6m (line) shooting 9m 9m shooting Wng Wing shooting FB Fastbreak sh. 7m 7m penalty sh.
 Brk. Breakthrough sh. LD Long distance sh. As. Assists PC Pass clear chance E7 Earned 7m pen. TF Technical faults St. Steals
 2m 2m punishments C7. Committed 7m E2 Earned 2m pun. YC. Yellow cards R/B Red/Blue cards Blk. Blocks S Starting Line-up

Handball statistics and livescore by Toma-soft ltd (www.toma-soft.hr)



10th IHF Women's Youth World Championship 2024



Final Round, 25-26. place

Match Team Statistics

Match No. 112

Angola 21 - 36 Iceland

(11 - 18) (10 - 18)

23.8.2024. 18:00

Attendance: 600

Vocational and Technical
College

Referees: Henrique Godoy (BRA) / Daniel Magalhaes da Silva (BRA)

Iceland

#	Surname and name	S	Goals / shots								Attack				Def.			Penalties			TP						
			Tot.	%	9m	6m	Wing	7m	FB	Brk.	LD	As.	PC	E7	E2	TF	St.	C7	Blk	YC		2m	R	B			
1	BRYNJARSDÓTTIR Ingunn María	S													1												46:15
2	ÁSGEIRSDÓTTIR Gyða Kristín		2/3	67			2/3																				7:22
4	THÓRHALLSDÓTTIR Ásthildur Jóna	S	3/6	50			1/4																				30:28
6	PÁLSDÓTTIR Dagmar Guðrun	S	6/10	60	2/5	2/2				1/1	1/2				6	2			4	1	1						45:00
8	ERLINGSDÓTTIR Kristbjörg		2/3	67	1/2						1/1																12:54
11	TRAUSTADÓTTIR Guðrún Hekla	S	4/8	50	2/6	2/2									1	1											35:47
12	HAUKSDÓTTIR Ingibjörg Lovísa																										12:03
13	GUDJÓNSDÓTTIR Guðmunda Auður		1/1	100		1/1																					18:46
15	VIKTORSÓTTIR Alexandra Osk	S	0/1	0			0/1																				52:18
16	ELÍASARDÓTTIR Elísabet Milly																										
17	GUNNTHÓRSÓTTIR Lyðía	S	5/6	83	4/4	1/2									1												26:27
18	HRAFNKELSDÓTTIR Thóra		3/3	100		1/1	1/1			1/1																	28:08
19	JÓNASDÓTTIR Ágústa Rún	S	1/2	50		1/2																					44:45
20	GUDMUNDSDÓTTIR Bergrós Ásta		3/4	75	0/1	3/3									2	1											13:50
21	ARNARSDÓTTIR Ásrún Inga		5/9	56	4/8	1/1									2	2			1	1	1	1					45:34
22	EIRIKSDÓTTIR Ama Karítas		1/1	100						1/1																	0:23
Team / bench																											
UKUPNO			36/57	63	13/26	12/14	4/9	1/1	4/4	2/3	0/0	13	6	1	0	15	2	3	1	0	0	0	0	0	0	0	0

#	Surname and name	Saves / shots								
		Tot.	%	9m	6m	Wing	7m	FB	Brk.	LD
1	BRYNJARSDÓTTIR Ingunn María	12/28	43	10/21	0/3	0/1		1/1	1/2	
12	HAUKSDÓTTIR Ingibjörg Lovísa	5/9	56		4/7		1/2			
16	ELÍASARDÓTTIR Elísabet Milly									
TOTAL		17/37	46	10/21	4/10	0/1	1/2	1/1	1/2	0/0

Coach: Raket Dögg Bragadóttir

Number of attacks: 67, Efficiency: 54%, Average Duration: 25.86 seconds

Attack by type of defense

	Shots	9m	6m	Wing	TF	E7	E2
On def. 6-0	6/13	4/9	2/3	0/1	3	0	0
On def. 5-1	19/32	9/16	6/7	3/7	11	1	0
On def. 4-2	5/5	0/0	3/3	1/1	1	0	0
On def. 3-3	1/1	0/0	1/1	0/0	0	0	0
On def. press.	0/1	0/1	0/0	0/0	0	0	0
Fastbreak	4/4				0	0	0

Defense by type

	Total	9m	6m	Wing	Stl.	C7	2m
Def. 6-0	13/29	9/23	2/3	1/1	2	1	0
Def. 5-1	6/15	2/6	4/8	0/0	0	2	0
Fastbreak	0/1				0	0	0

Defense with superiority / minority / goalkeeper out

	Attack				Reaction		
	Att.	Eff.	Shots	TF	FB	LD	Tot.
6 on 6	67	31%	21/43	24			
5 on 6	2	0%	0/1	1			

Numbers show attacking numbers of opponent. Lower efficiency of opponent means better defense of this team

Attack with superiority / minority / goalkeeper out

	Attack				Reaction		
	Att.	Eff.	Shots	TF	FB	LD	Tot.
7 on 6 (GK out)	5	20%	1/3	2	0/0	1/1	1/1
6 on 6	60	57%	34/48	12			
6 on 5	2	50%	1/1	1			

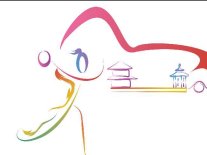
Player superiority / GK out counted at the end of attack (in case it changes during attack)

Jersey number Tot. Total shooting 6m 6m (line) shooting 9m 9m shooting Wng Wing shooting FB Fastbreak sh. 7m 7m penalty sh.
Brk. Breakthrough sh. LD Long distance sh. As. Assists PC Pass clear chance E7 Earned 7m pen. TF Technical faults St. Steals
2m 2m punishments C7. Committed 7m E2 Earned 2m pun. YC. Yellow cards R/B Red/Blue cards Blk. Blocks S Starting Line-up

Handball statistics and livescore by Toma-soft ltd (www.toma-soft.hr)



10th IHF Women's Youth World Championship 2024



Final Round, 25-26. place

Match Team Statistics

Match No. 112

Angola 21 - 36 Iceland

(11 - 18) (10 - 18)

23.8.2024. 18:00

Attendance: 600

Vocational and Technical College

Referees: Henrique Godoy (BRA) / Daniel Magalhaes da Silva (BRA)

Shot distribution by player

2 G. Ásgeirsdóttir

		0/1
1/1		1/1

4 Á. Thórhallsdóttir

		1/1
0/1		
	0/1	2/2

1 miss.

6 D. Pálsdóttir

1/1	0/1	2/2
1/2	1/1	1/1

2 post

8 K. Erlingsdóttir

1/1		0/1
1/1		

11 G. Traustadóttir

		1/1
1/2		1/1

1 miss. 2 block 1/1 lob

13 G. Gudjónsdóttir

		1/1

15 A. Viktorsdóttir

		0/1

17 L. Gunnthórsdóttir

1/1		1/1
1/2		
2/2		

18 T. Hrafnkelsdóttir

1/1		
1/1		1/1

19 Á. Jónasdóttir

		0/1
		1/1

20 B. Gudmundsdóttir

	1/1	
		0/1
1/1		1/1

21 Á. Arnarsdóttir

		2/2
3/4		

1 post 1 miss. 1 block

22 A. Eiríksdóttir

		1/1

TOTAL

1/1	1/2	4/4
4/6	0/1	3/7
11/14	1/2	10/10

3 post 3 miss. 3 block 1/1 lob

Saves distribution goalkeepers

1 I. Brynjarsdóttir

0/2		
2/3	1/1	2/3
1/8	2/4	4/6

12 I. Hauksdóttir

1/2	1/1	
1/2	1/2	1/1

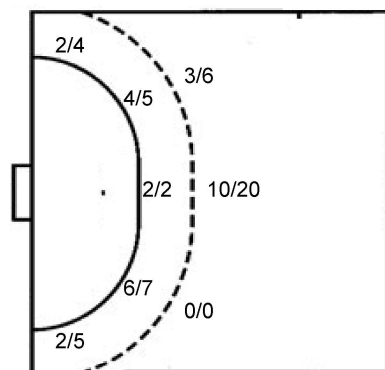
16 E. Elíasardóttir

TOTAL

0/2		
3/5	2/2	2/3
2/10	3/6	5/7

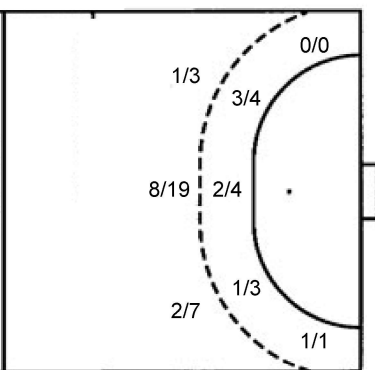
Shots by position

ATTACK



7m penalties	1/1
Fastbreak	4/4
Breakthrough	2/3
Long dist.	0/0

DEFENSE



7m penalties	1/3
Fastbreak	0/1
Breakthrough	1/3
Long dist.	1/1

Shooting statistics

Position	Goals	Sav.	Miss.	Post	Blk.	Total	%
Back (9m)	13	5	2	3	3	26	50
Line (6m)	12	2	0	0	0	14	86
Wing	4	4	1	0	0	9	44
7m penalties	1	0	0	0	0	1	100
Fastbreak	4	0	0	0	0	4	100
Breakthrough	2	1	0	0	0	3	67
Total	36	12	3	3	3	57	63

Jersey number Tot. Total shooting 6m 6m (line) shooting 9m 9m shooting Wng Wing shooting FB Fastbreak sh. 7m 7m penalty sh.
 Brk. Breakthrough sh. LD Long distance sh. As. Assists PC Pass clear chance E7 Earned 7m pen. TF Technical faults St. Steals
 2m 2m punishments C7. Committed 7m E2 Earned 2m pun. YC. Yellow cards R/B Red/Blue cards Blk. Blocks S Starting Line-up

Handball statistics and livescore by Toma-soft ltd (www.toma-soft.hr)



10th IHF Women's Youth World Championship 2024

Final Round, 25-26. place



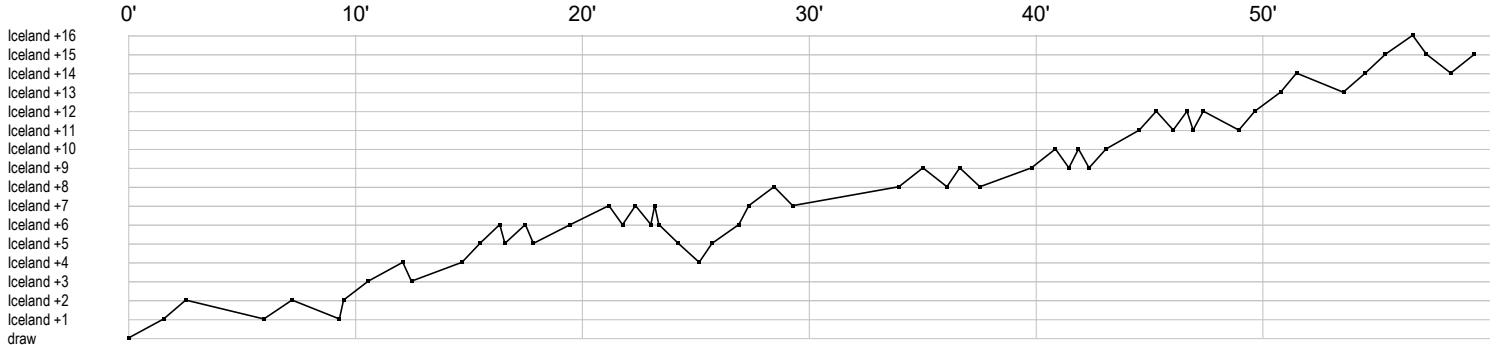
Match Team Statistics
Match No. 112

Angola 21 - 36 Iceland

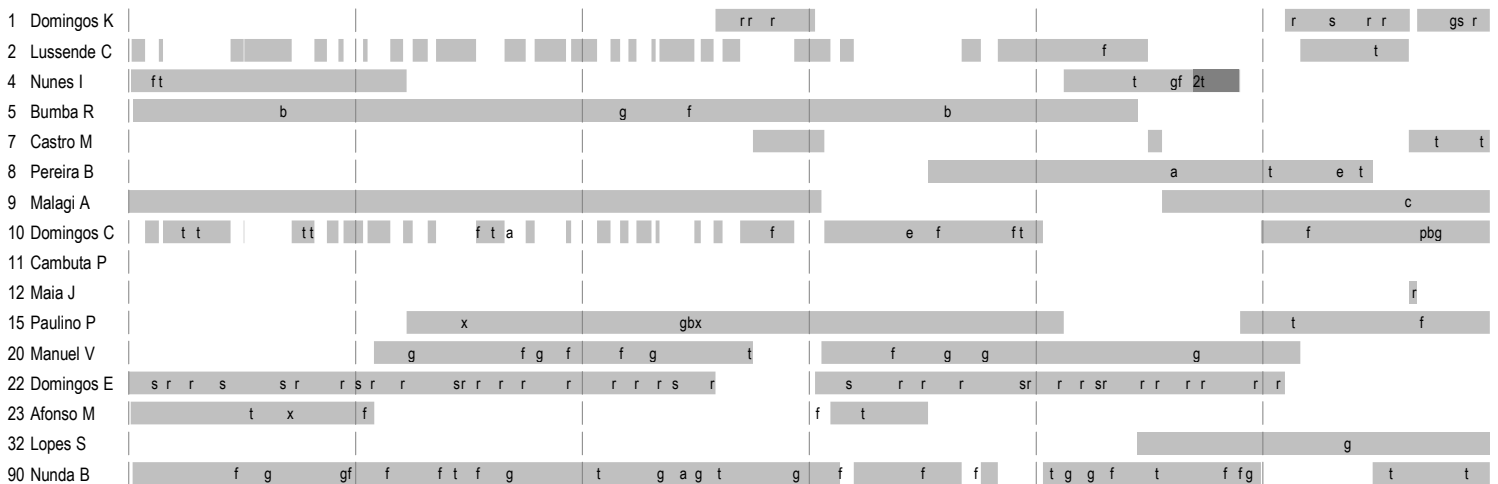
(11 - 18) (10 - 18)

23.8.2024. 18:00
Attendance: 600
Vocational and Technical College

Referees: Henrique Godoy (BRA) / Daniel Magalhaes da Silva (BRA)



Angola



Iceland



In game	g Goal scored	f Missed shot	a Assist	t Technical faults	b Steal
2 2min suspension	e Earned 7m	c Committed 7m	y Yellow card	r Red Card	k Blue card
i Earned 2min.	x Block	4 4min suspension	p Pass for clear chance	s Saved shot	r Received goal

Handball statistics and livescore by Toma-soft ltd (www.toma-soft.hr)