



IHF Women's Youth (18) World Championship

North Macedonia (Skopje)

Final Round, Quarterfinals



Match Team Statistics

Match No. 86

Korea 33 - 27 Sweden

(18 - 14) (15 - 13)

7.8.2022. 20:30

Attendance: 120

Sport Centre Boris Trajkovski

Referees: Danielo Bozhinovski (MKD) / Viktor Nachevski (MKD)

Korea

#	Surname and name	S	Goals / shots								Attack					Def.			Penalties			TP						
			Tot.	%	9m	6m	Wing	7m	FB	Brk.	LD	As.	PC	E7	E2	TF	St.	C7	Blk	YC	2m		R	B				
4	LEE Hyewon	S	4/6	67	1/2		1/1			1/1	1/2			3	1	1		5	1	1								51:58
7	KIM Songwon																											7:22
9	AHN Hyein																											2:37
10	LIM Seoyoung		1/1	100						1/1														2				12:24
11	KIM Seojin	S	10/15	67			8/13			1/1	1/1					1		2	1									55:40
12	KIM Gayeong	S																										54:09
17	OH Yeana																1											0:58
18	KIM Jia	S	5/9	56	0/3					2/3	3/3			6	4			2	2									57:13
20	LEE Kyuhee																											
21	PARK Jihyeon													1														1:19
23	KIM Minseo	S	3/4	75				2/2		0/1	1/1			6	2			10										58:41
24	CHA Seoyeon	S	3/7	43		0/1	3/6							1				1										52:23
25	PARK Sujeong		1/2	50	0/1					1/1				1	1	1		1										4:07
27	SHIN Jaeyeon																											0:45
33	KIM Sejin	S	6/7	86		5/6				1/1								1	1					1				58:32
77	CHOI Minjeong																											1:52
Team / bench																												
UKUPNO			33/51	65	1/6	5/7	12/20	2/2	5/6	7/9	1/1			18	8	2	1	21	5	4	0	0	0	3	0	0		

#	Surname and name	Saves / shots								
		Tot.	%	9m	6m	Wing	7m	FB	Brk.	LD
12	KIM Gayeong	13/40	33	5/11	4/13	3/6	0/3		1/7	
77	CHOI Minjeong	2/2	100	1/1			1/1			
TOTAL		15/42	36	6/12	4/13	3/6	1/4	0/0	1/7	0/0

Coach: Jin Soon Kim

Number of attacks: 70, Efficiency: 47%, Average Duration: 23.80 seconds

Attack by type of defense

	Shots	9m	6m	Wing	TF	E7	E2
On def. 6-0	24/40	1/6	4/6	12/19	20	1	1
On def. 5-1	1/2	0/0	1/1	0/1	1	1	0
Fastbreak	5/6				0	0	0

Defense by type

	Total	9m	6m	Wing	Stl.	C7	2m
Def. 6-0	1/3	0/2	1/1	0/0	0	1	0
Def. 3-3	23/39	6/12	8/14	3/6	5	3	3
Fastbreak	0/0				0	0	0

Attack with superiority / minority / goalkeeper out

	Attack				Reaction		
	Att.	Eff.	Shots	TF	FB	LD	Tot.
7 on 6 (GK out)	1	0%	0/1	0	0/0	0/0	0/0
6 on 6 (GK out)	3	0%	0/2	1	0/0	0/1	0/1
6 on 5 (GK out)	1	0%	0/0	1	0/0	0/0	0/0
6 on 6	59	53%	31/41	18			
6 on 5	4	50%	2/3	1			
5 on 6	2	0%	0/2	0			

Player superiority / GK out counted at the end of attack (in case it changes during attack)

Defense with superiority / minority / goalkeeper out

	Attack				Reaction		
	Att.	Eff.	Shots	TF	FB	LD	Tot.
6 on 6 (GK out)	2	50%	1/2	0	0/0	1/1	1/1
6 on 6	59	37%	22/31	28			
6 on 5 (GK out)	1	0%	0/0	1	0/0	0/0	0/0
6 on 5	6	50%	3/5	1			
5 on 5	1	100%	1/1	0			

Numbers show attacking numbers of opponent. Lower efficiency of opponent means better defense of this team

Jersey number Tot. Total shooting 6m 6m (line) shooting 9m 9m shooting Wng Wing shooting FB Fastbreak sh. 7m 7m penalty sh.
 Brk. Breakthrough sh. LD Long distance sh. As. Assists PC Pass clear chance E7 Earned 7m pen. TF Technical faults St. Steals
 2m 2m punishments C7. Committed 7m E2 Earned 2m pun. YC. Yellow cards R/B Red/Blue cards Blk. Blocks S Starting Line-up



IHF Women's Youth (18) World Championship

North Macedonia (Skopje)

Final Round, Quarterfinals



Match Team Statistics

Match No. 86

Korea 33 - 27 Sweden

(18 - 14) (15 - 13)

7.8.2022. 20:30

Attendance: 120

Sport Centre Boris Trajkovski

Referees: Danielo Bozhinovski (MKD) / Viktor Nachevski (MKD)

Shot distribution by player

4 H. Lee	7 S. Kim	9 H. Ahn	10 S. Lim	11 S. Kim	17 Y. Oh	18 J. Kim
0/1 1/1 2/2				1/1 2/4		1/1 0/1 0/1
			1/1	3/3 lob 2 miss.		1 miss. 1 block
20 K. Lee	21 J. Park	23 M. Kim	24 S. Cha	25 S. Park	27 J. Shin	33 S. Kim
		1/1 1/1	1/1 1/2 0/1	1/1		2/2 1/1 0/1
		1 miss.	0/1	1 block		1/1

TOTAL

4/4	1/2	5/5
6/9	1/4	7/9
2/3	0/2	3/3

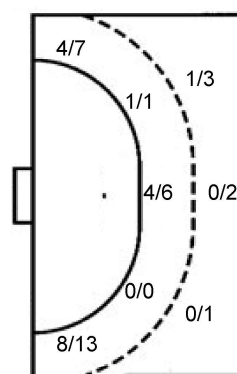
4 miss. 2 block 4/4 lob

Saves distribution goalkeepers

12 G. Kim	77 M. Choi	TOTAL
1/7 2/8 3/5	1/1	1/7 3/9 3/5
0/3 1/11 1/1		1/1 1/11 1/1

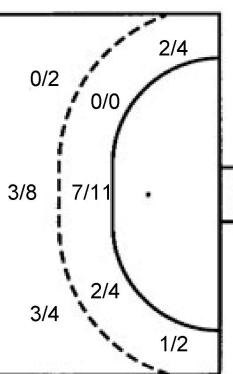
Shots by position

ATTACK



7m penalties	2/2
Fastbreak	5/6
Breakthrough	7/9
Long dist.	1/1

DEFENSE



7m penalties	3/4
Fastbreak	0/0
Breakthrough	6/7
Long dist.	0/1

Shooting statistics

Position	Goals	Sav.	Miss.	Post	Blk.	Total	%
Back (9m)	1	3	0	0	2	6	17
Line (6m)	5	2	0	0	0	7	71
Wing	12	6	2	0	0	20	60
7m penalties	2	0	0	0	0	2	100
Fastbreak	5	0	1	0	0	6	83
Breakthrough	7	1	1	0	0	9	78
Total	32	12	4	0	2	50	64

Jersey number Tot. Total shooting 6m 6m (line) shooting 9m 9m shooting Wng Wing shooting FB Fastbreak sh. 7m 7m penalty sh.
 Brk. Breakthrough sh. LD Long distance sh. As. Assists PC Pass clear chance E7 Earned 7m pen. TF Technical faults St. Steals
 2m 2m punishments C7. Committed 7m E2 Earned 2m pun. YC. Yellow cards R/B Red/Blue cards Blk. Blocks S Starting Line-up



IHF Women's Youth (18) World Championship

North Macedonia (Skopje)

Final Round, Quarterfinals



Match Team Statistics

Match No. 86

Korea 33 - 27 Sweden

(18 - 14) (15 - 13)

7.8.2022. 20:30

Attendance: 120

Sport Centre Boris Trajkovski

Referees: Danielo Bozhinovski (MKD) / Viktor Nachevski (MKD)

Sweden

#	Surname and name	S	Goals / shots								Attack					Def.			Penalties				TP					
			Tot.	%	9m	6m	Wing	7m	FB	Brk.	LD	As.	PC	E7	E2	TF	St.	C7	Blk	YC	2m	R		B				
1	BERGFELDT Line	S																										36:31
3	QVAREFORDT Julia		1/1	100		1/1									1													9:20
5	KARLSSON Sol		1/1	100		1/1																						27:26
6	SALMI Alice		2/3	67		2/3							1		1													14:51
7	HUSELIUS Stella	S	6/10	60		0/1	2/4	3/4		1/1					2	1												50:47
8	LJUNGHOLM Isa		0/1	0		0/1									1			1										16:30
9	MIHAILOVIC Emma	S	2/5	40	0/2					2/2	0/1	3	8	1	1	5	2	1	1			1						46:02
10	KYLBERG Thea	S	7/9	78	5/6					2/3		6	3	1	6	1												44:44
11	WIKSFORS Stina	S	6/10	60	0/1	6/9									1	1												47:57
13	LÖNNEGREN Elise														2													6:31
16	WALL Ida																											20:28
17	WAHLBERG Freja		0/2	0	0/2										1													13:50
20	CARLSSON Tindra		2/2	100	1/1					1/1		3			4													11:24
23	SHULTZ Ebba														1													5:09
28	GRANAT Felicia	S	0/2	0	0/2								1	1	3			1						1				35:56
29	NORSTEN VIKSTRÖM Felicia	S	0/1	0		0/1																						32:34
	Team / bench																								1			
	UKUPNO		27/47	57	6/14	9/15	3/6	3/4	0/0	6/7	0/1	12	12	4	2	30	4	2	2	1	2	0	0					

#	Surname and name	Saves / shots								
		Tot.	%	9m	6m	Wing	7m	FB	Brk.	LD
1	BERGFELDT Line	8/24	33	2/2	2/6	4/10		0/5	0/1	
16	WALL Ida	4/20	20	1/2	0/1	2/8	0/2		1/7	
	TOTAL	12/44	27	3/4	2/7	6/18	0/2	0/5	1/8	0/0

Coach: Tomas Axné

Number of attacks: 69, Efficiency: 39%, Average Duration: 27.96 seconds

Attack by type of defense

	Shots	9m	6m	Wing	TF	E7	E2
On def. 6-0	1/3	0/2	1/1	0/0	1	1	0
On def. 3-3	23/39	6/12	8/14	3/6	29	3	2
Fastbreak	0/0				0	0	0

Defense by type

	Total	9m	6m	Wing	Stl.	C7	2m
Def. 6-0	24/40	1/6	4/6	12/19	4	1	2
Def. 5-1	1/2	0/0	1/1	0/1	0	1	0
Fastbreak	5/6				0	0	0

Attack with superiority / minority / goalkeeper out

	Attack				Reaction		
	Att.	Eff.	Shots	TF	FB	LD	Tot.
6 on 6 (GK out)	2	50%	1/2	0	0/0	1/1	1/1
6 on 6	59	37%	22/31	28			
6 on 5 (GK out)	1	0%	0/0	1	0/0	0/0	0/0
6 on 5	6	50%	3/5	1			
5 on 5	1	100%	1/1	0			

Player superiority / GK out counted at the end of attack (in case it changes during attack)

Defense with superiority / minority / goalkeeper out

	Attack				Reaction		
	Att.	Eff.	Shots	TF	FB	LD	Tot.
7 on 6 (GK out)	1	0%	0/1	0	0/0	0/0	0/0
6 on 6 (GK out)	3	0%	0/2	1	0/0	0/1	0/1
6 on 5 (GK out)	1	0%	0/0	1	0/0	0/0	0/0
6 on 6	59	53%	31/41	18			
6 on 5	4	50%	2/3	1			
5 on 6	2	0%	0/2	0			

Numbers show attacking numbers of opponent. Lower efficiency of opponent means better defense of this team

Jersey number Tot. Total shooting 6m 6m (line) shooting 9m 9m shooting Wng Wing shooting FB Fastbreak sh. 7m 7m penalty sh.
 Brk. Breakthrough sh. LD Long distance sh. As. Assists PC Pass clear chance E7 Earned 7m pen. TF Technical faults St. Steals
 2m 2m punishments C7. Committed 7m E2 Earned 2m pun. YC. Yellow cards R/B Red/Blue cards Blk. Blocks S Starting Line-up

Handball statistics and livescore by Toma-soft ltd (www.toma-soft.hr)



IHF Women's Youth (18) World Championship

North Macedonia (Skopje)

Final Round, Quarterfinals



Match Team Statistics

Match No. 86

Korea 33 - 27 Sweden

(18 - 14) (15 - 13)

7.8.2022. 20:30

Attendance: 120

Sport Centre Boris Trajkovski

Referees: Danielo Bozhinovski (MKD) / Viktor Nachevski (MKD)

Shot distribution by player

3 J. Qvarfordt	5 S. Karlsson	6 A. Salmi	7 S. Huselius	8 I. Ljungholm	9 E. Mihailovic	10 T. Kylberg
1/1	1/1	1/1	1/1	0/1	0/1	1/1
		1/1	1/2		2/2	2/3
			0/2			2/2
		1 post			2 post	1 post

11 S. Wiksfors	13 E. Lönnegren	17 F. Wahlberg	20 T. Carlsson	23 E. Shultz	28 F. Granat	29 F. Norsten Vikström
3/3			1/1			
2/2		0/1			0/1	
1/1		0/1	1/1		0/1	0/1
1 post						

TOTAL

6/7	0/1	3/3
6/9	0/3	10/11
2/5	0/2	0/1

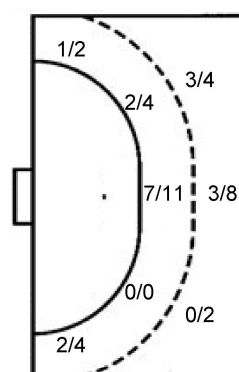
5 post

Saves distribution goalkeepers

1 L. Bergfeldt	16 I. Wall	TOTAL
0/2	0/2	0/4
2/6	1/3	3/9
1/3	0/2	1/3
1/2	2/3	1/2
1/3	1/6	2/9
0/2		0/5
		3/4
		2/9
		0/3

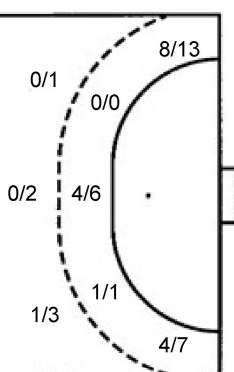
Shots by position

ATTACK



7m penalties	3/4
Fastbreak	0/0
Breakthrough	6/7
Long dist.	0/1

DEFENSE



7m penalties	2/2
Fastbreak	5/6
Breakthrough	7/9
Long dist.	1/1

Shooting statistics

Position	Goals	Sav.	Miss.	Post	Blk.	Total	%
Back (9m)	6	6	0	2	0	14	43
Line (6m)	9	4	0	2	0	15	60
Wing	3	3	0	0	0	6	50
7m penalties	3	1	0	0	0	4	75
Fastbreak	0	0	0	0	0	0	0
Breakthrough	6	1	0	0	0	7	86
Total	27	15	0	4	0	46	59

Jersey number Tot. Total shooting 6m 6m (line) shooting 9m 9m shooting Wng Wing shooting FB Fastbreak sh. 7m 7m penalty sh.
 Brk. Breakthrough sh. LD Long distance sh. As. Assists PC Pass clear chance E7 Earned 7m pen. TF Technical faults St. Steals
 2m 2m punishments C7. Committed 7m E2 Earned 2m pun. YC. Yellow cards R/B Red/Blue cards Blk. Blocks S Starting Line-up

Handball statistics and livescore by Toma-soft ltd (www.toma-soft.hr)

