



IHF Women's Youth (18) World Championship

North Macedonia (Skopje)

Main Round III, 2. round



Match Team Statistics

Match No. 68

Romania 27 - 28 Germany

(12 - 12) (15 - 16)

5.8.2022. 16:30

Attendance: 140

Sport Centre Boris Trajkovski

Referees: Vania Sa (POR) / Marta Sa (POR)

Romania

#	Surname and name	S	Goals / shots									Attack					Def.			Penalties				TP		
			Tot.	%	9m	6m	Wing	7m	FB	Brk.	LD	As.	PC	E7	E2	TF	St.	C7	Blk	YC	2m	R	B			
1	NEAGU Teodora Diana																									13:30
2	MIHAI Mihaela Andreea	S	2/5	40			0/2	2/3								1	1									34:25
4	PREDESCU Vanessa Leona		2/3	67			2/3								1											21:16
5	GRIGORE Anamaria Mihaela	S													1											29:36
6	DAMIAN Teodora Lavinia		1/3	33	0/1				1/2						4		2	2	1			1				22:41
8	MEZEI Maria Noemi	S	5/8	63		5/7			0/1								1							2		48:57
9	MAXIM Irina Andreea		1/1	100					1/1																	36:19
12	DEMETER Maria																									
16	NITA Ioana	S																1								24:56
17	LECU Valentina Elena																		1							4:43
18	LIXANDROIU Maria Diana	S	7/14	50	3/9			1/1		3/3	0/1			3	4	1	1	3				2		1		46:01
23	MOZES Orsolya Maria		2/3	67			2/3																			20:26
24	BOICIUC Alisia Lorena	S	5/9	56	0/1				4/7	1/1				2	2	1	1	7			1					51:54
44	GROSAN Maria Ioana		1/1	100							1/1															24:53
55	DANCIU Cristina Elisa		1/1	100		1/1																				12:58
77	MOHAMED Mariam Nadia	S																								27:25
Team / bench																		1						1		
UKUPNO			27/48	56	3/11	6/8	4/8	3/4	0/0	9/14	2/3			10	7	4	5	22	1	5	2	1	3	0	0	

#	Surname and name	Saves / shots								
		Tot.	%	9m	6m	Wing	7m	FB	Brk.	LD
1	NEAGU Teodora Diana									
12	DEMETER Maria	0/2	0				0/2			
16	NITA Ioana	11/35	31	6/14	0/1	1/4	1/3	1/5	2/7	0/1
TOTAL		11/37	30	6/14	0/1	1/4	1/5	1/5	2/7	0/1

Coach: Aurelian Rosca

Number of attacks: 66, Efficiency: 41%, Average Duration: 26.95 seconds

Attack by type of defense

	Shots	9m	6m	Wing	TF	E7	E2
On def. 6-0	22/41	3/11	6/8	4/8	22	4	5
Fastbreak	0/0				0	0	0

Defense by type

	Total	9m	6m	Wing	Stl.	C7	2m
Def. 6-0	17/39	8/22	1/2	3/6	1	5	3
Fastbreak	4/5				0	0	0

Attack with superiority / minority / goalkeeper out

	Attack				Reaction		
	Att.	Eff.	Shots	TF	FB	LD	Tot.
7 on 6 (GK out)	8	50%	4/6	2	0/0	1/2	1/2
6 on 6 (GK out)	1	0%	0/0	1	0/0	0/0	0/0
6 on 5 (GK out)	2	100%	2/2	0	0/0	0/0	0/0
6 on 6	42	36%	15/25	17			
6 on 5	8	63%	5/8	0			
6 on 4	2	50%	1/2	0			
5 on 6	2	0%	0/1	1			
5 on 5	1	0%	0/0	1			

Player superiority / GK out counted at the end of attack (in case it changes during attack)

Defense with superiority / minority / goalkeeper out

	Attack				Reaction		
	Att.	Eff.	Shots	TF	FB	LD	Tot.
7 on 6 (GK out)	1	0%	0/1	0	0/0	1/1	1/1
6 on 6 (GK out)	3	67%	2/3	0	0/0	0/1	0/1
5 on 6 (GK out)	1	0%	0/1	0	0/0	0/0	0/0
6 on 6	51	41%	21/36	15			
5 on 6	2	0%	0/2	0			
6 on 5 (GK out)	4	75%	3/3	1	0/0	0/0	0/0
6 on 5	2	50%	1/2	0			
5 on 5	1	100%	1/1	0			

Numbers show attacking numbers of opponent. Lower efficiency of opponent means better defense of this team

Jersey number Tot. Total shooting 6m 6m (line) shooting 9m 9m shooting Wng Wing shooting FB Fastbreak sh. 7m 7m penalty sh.
 Brk. Breakthrough sh. LD Long distance sh. As. Assists PC Pass clear chance E7 Earned 7m pen. TF Technical faults St. Steals
 2m 2m punishments C7. Committed 7m E2 Earned 2m pun. YC. Yellow cards R/B Red/Blue cards Blk. Blocks S Starting Line-up



IHF Women's Youth (18) World Championship

North Macedonia (Skopje)

Main Round III, 2. round



Match Team Statistics

Match No. 68

Romania 27 - 28 Germany

(12 - 12) (15 - 16)

5.8.2022. 16:30

Attendance: 140

Sport Centre Boris Trajkovski

Referees: Vania Sa (POR) / Marta Sa (POR)

Shot distribution by player

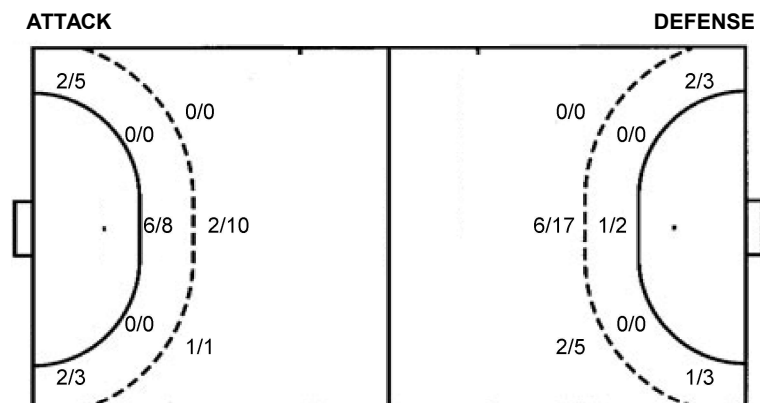
2 M. Mihai	4 V. Predescu	5 A. Grigore	6 T. Damian	8 M. Mezei	9 I. Maxim	17 V. Lecu
1/2				0/1	1/1	
1/1			1/2	3/4		
	0/1			1 post 1/1 lob		
2 post	1/1 lob		1 block			

18 M. Lixandroi	23 O. Mozes	24 A. Boiciuc	44 M. Grosan	55 C. Danciu	77 M. Mohamed	TOTAL
2/2		0/1				3/4
0/1	1/1	1/1	1/1	1/1		0/2
0/2		0/1				3/4
2/2		1/1	1/1	1/1		4/5
1/1		0/1	2/2			3/5
2/3						4/6
1 post 2 miss.	1 post 1/1 lob	1 post				2/2
						0/2
						5/6
						6 post 2 miss. 1 block 3/3 lob

Saves distribution goalkeepers

1 T. Neagu	12 M. Demeter	16 I. Nita	TOTAL
		0/2	0/2
	0/1	2/2	2/2
		1/5	1/5
		1/3	1/3
		3/5	3/5
		2/7	2/8
	0/1	1/6	1/7
		1/5	1/5

Shots by position



7m penalties 3/4
 Fastbreak 0/0
 Breakthrough 9/14
 Long dist. 2/3

7m penalties 4/5
 Fastbreak 4/5
 Breakthrough 5/9
 Long dist. 3/4

Shooting statistics

Position	Goals	Sav.	Miss.	Post	Blk.	Total	%
Back (9m)	3	5	1	1	1	11	27
Line (6m)	6	1	0	1	0	8	75
Wing	4	2	0	2	0	8	50
7m penalties	3	0	0	1	0	4	75
Fastbreak	0	0	0	0	0	0	0
Breakthrough	9	4	0	1	0	14	64
Total	25	12	1	6	1	45	56

Jersey number Tot. Total shooting 6m 6m (line) shooting 9m 9m shooting Wng Wing shooting FB Fastbreak sh. 7m 7m penalty sh.
 Brk. Breakthrough sh. LD Long distance sh. As. Assists PC Pass clear chance E7 Earned 7m pen. TF Technical faults St. Steals
 2m 2m punishments C7. Committed 7m E2 Earned 2m pun. YC. Yellow cards R/B Red/Blue cards Blk. Blocks S Starting Line-up



IHF Women's Youth (18) World Championship
North Macedonia (Skopje)
Main Round III, 2. round



Match Team Statistics

Match No. 68

Romania 27 - 28 Germany
(12 - 12) (15 - 16)

5.8.2022. 16:30

Attendance: 140

Sport Centre Boris Trajkovski

Referees: Vania Sa (POR) / Marta Sa (POR)

Germany

#	Surname and name	S	Goals / shots									Attack					Def.			Penalties				TP												
			Tot.	%	9m	6m	Wing	7m	FB	Brk.	LD	As.	PC	E7	E2	TF	St.	C7	Blk	YC	2m	R	B													
1	HÜBNER Sarah Sophia	S																																		45:32
3	SCHÖNEFELD Maja																																		31:30	
5	TERFLOTH Pia Maria	S	3/5	60				1/3																											53:36	
7	PROBST Magdalena Barbara Leonie	S	2/3	67				1/2																											47:05	
8	WOHLFEIL Merja																																		6:33	
9	KÜHNE Nieke	S	10/15	67	3/7					3/3	1/1	3/3	0/1		1	1	2			3	2	1													58:07	
10	EHLERT Matilda		1/3	33	0/1					1/2						1				1															7:49	
11	BIANCO Gianina Estella																																			
12	WEISS Marie Kristin																																			
14	RÖPCKE Lotta	S	1/6	17	0/2											1	2	2	4	1															58:52	
15	HÜRKAMP Emy Jane																																			
18	ALBERS Merle Sophie		0/2	0	0/1	0/1														1	1														19:27	
19	LEUCHTER Viola Charlotte		8/15	53	5/11																														25:00	
20	PFUNDSTEIN Ariane	S	3/4	75				1/1	1/1					0/1																					59:39	
22	WIPPER Tabea																																		1:01	
23	ALBERT Luise	S																																	5:49	
	Team / bench																																			
	UKUPNO		28/53	53	8/22	1/2	3/6	4/5	4/5	5/9	3/4				5	8	5	3	16	5	4	1														

#	Surname and name	Saves / shots								
		Tot.	%	9m	6m	Wing	7m	FB	Brk.	LD
1	HÜBNER Sarah Sophia	12/37	32	5/8	1/7	2/6	0/3			4/13
12	WEISS Marie Kristin									
	TOTAL	12/37	32	5/8	1/7	2/6	0/3	1/0	4/13	0/0

Coach: Eugenius Smits

Number of attacks: 65, Efficiency: 43%, Average Duration: 28.41 seconds

Attack by type of defense

	Shots	9m	6m	Wing	TF	E7	E2
On def. 6-0	17/39	8/22	1/2	3/6	16	5	3
Fastbreak	4/5				0	0	0

Defense by type

	Total	9m	6m	Wing	Stl.	C7	2m
Def. 6-0	22/41	3/11	6/8	4/8	5	4	6
Fastbreak	0/0				0	0	0

Attack with superiority / minority / goalkeeper out

	Attack				Reaction		
	Att.	Eff.	Shots	TF	FB	LD	Tot.
7 on 6 (GK out)	1	0%	0/1	0	0/0	1/1	1/1
6 on 6 (GK out)	3	67%	2/3	0	0/0	0/1	0/1
5 on 6 (GK out)	1	0%	0/1	0	0/0	0/0	0/0
6 on 6	51	41%	21/36	15			
5 on 6	2	0%	0/2	0			
6 on 5 (GK out)	4	75%	3/3	1	0/0	0/0	0/0
6 on 5	2	50%	1/2	0			
5 on 5	1	100%	1/1	0			

Player superiority / GK out counted at the end of attack (in case it changes during attack)

Defense with superiority / minority / goalkeeper out

	Attack				Reaction		
	Att.	Eff.	Shots	TF	FB	LD	Tot.
7 on 6 (GK out)	8	50%	4/6	2	0/0	1/2	1/2
6 on 6 (GK out)	1	0%	0/0	1	0/0	0/0	0/0
6 on 5 (GK out)	2	100%	2/2	0	0/0	0/0	0/0
6 on 6	42	36%	15/25	17			
6 on 5	8	63%	5/8	0			
6 on 4	2	50%	1/2	0			
5 on 6	2	0%	0/1	1			
5 on 5	1	0%	0/0	1			

Numbers show attacking numbers of opponent. Lower efficiency of opponent means better defense of this team

Jersey number Tot. Total shooting 6m 6m (line) shooting 9m 9m shooting Wng Wing shooting FB Fastbreak sh. 7m 7m penalty sh.
Brk. Breakthrough sh. LD Long distance sh. As. Assists PC Pass clear chance E7 Earned 7m pen. TF Technical faults St. Steals
2m 2m punishments C7. Committed 7m E2 Earned 2m pun. YC. Yellow cards R/B Red/Blue cards Blk. Blocks S Starting Line-up



IHF Women's Youth (18) World Championship

North Macedonia (Skopje)

Main Round III, 2. round



Match Team Statistics

Match No. 68

Romania 27 - 28 Germany

(12 - 12) (15 - 16)

5.8.2022. 16:30

Attendance: 140

Sport Centre Boris Trajkovski

Referees: Vania Sa (POR) / Marta Sa (POR)

Shot distribution by player

3 M. Schönefeld

5 P. Terfloth

1/1	0/1	
		2/2

1 post

7 M. Probst

		1/1
		1/1

1 miss.

8 M. Wohlfel

9 N. Kühne

2/2		1/2
1/1	0/1	
2/2		2/3

2 miss. 2/2 lob

10 M. Ehler

0/1		1/2

11 G. Bianco

14 L. Röpcke

		1/1
		0/1

2 post 1 miss. 1 block

15 E. Hürkamp

18 M. Albers

2 post

19 V. Leuchter

	0/2	1/1
	1/2	2/2
4/4		

2 post 1 miss. 1 block

20 A. Pfundstein

	1/1	2/2
0/1		

22 T. Wipper

23 L. Albert

TOTAL

2/2	0/2	4/5
2/3	2/5	6/8
6/7		4/5

7 post 5 miss. 2 block 2/2 lob

Saves distribution goalkeepers

1 S. Hübner

1/4	2/2	1/4
1/5	2/5	2/6
0/2	2/2	1/6

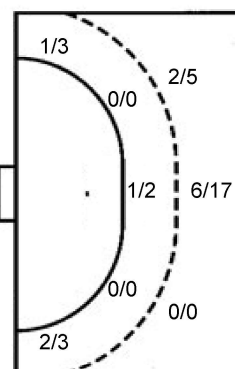
12 M. Weiss

TOTAL

1/4	2/2	1/4
1/5	2/5	2/6
0/2	2/2	1/6

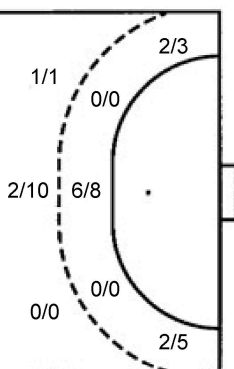
Shots by position

ATTACK



7m penalties 4/5
Fastbreak 4/5
Breakthrough 5/9
Long dist. 3/4

DEFENSE



7m penalties 3/4
Fastbreak 0/0
Breakthrough 9/14
Long dist. 2/3

Shooting statistics

Position	Goals	Sav.	Miss.	Post	Blk.	Total	%
Back (9m)	8	6	2	4	2	22	36
Line (6m)	1	0	0	1	0	2	50
Wing	3	1	1	1	0	6	50
7m penalties	4	1	0	0	0	5	80
Fastbreak	4	1	0	0	0	5	80
Breakthrough	5	2	1	1	0	9	56
Total	25	11	4	7	2	49	51

Jersey number Tot. Total shooting 6m 6m (line) shooting 9m 9m shooting Wng Wing shooting FB Fastbreak sh. 7m 7m penalty sh.
Brk. Breakthrough sh. LD Long distance sh. As. Assists PC Pass clear chance E7 Earned 7m pen. TF Technical faults St. Steals
2m 2m punishments C7. Committed 7m E2 Earned 2m pun. YC. Yellow cards R/B Red/Blue cards Blk. Blocks S Starting Line-up

Handball statistics and livescore by Toma-soft ltd (www.toma-soft.hr)

