



IHF Women's Youth (18) World Championship

North Macedonia (Skopje)

Main Round III, 1. round



Match Team Statistics

Match No. 60

Korea 33 - 31 Romania

(17 - 16) (16 - 15)

4.8.2022. 18:30

Attendance: 120

Sport Centre Boris Trajkovski

Referees: Mohamed Chouraki (MAR) / Achraf El Mouniri (MAR)

Korea

#	Surname and name	S	Goals / shots								Attack					Def.			Penalties			TP						
			Tot.	%	9m	6m	Wing	7m	FB	Brk.	LD	As.	PC	E7	E2	TF	St.	C7	Blk	YC	2m		R	B				
4	LEE Hyewon	S	5/7	71	3/4					1/1	1/2				4	2	1		2	2	1				1			59:54
7	KIM Songwon	S	0/1	0				0/1																				17:25
9	AHN Hyein		2/2	100		1/1																						3:58
10	LIM Seoyoung																											
11	KIM Seojin	S	6/10	60				2/5		4/5					1				1	2	1				1			60:00
12	KIM Gayeong	S												1				1										52:59
17	OH Yeana																											
18	KIM Jia	S	5/9	56	2/4					1/1	2/4			4	2				5	2								60:00
20	LEE Kyuhee																											
21	PARK Jihyeon																											
23	KIM Minseo	S	10/13	77	0/1	3/3		3/5		3/3	1/1			4	4	2		5	1									60:00
24	CHA Seoyeon		3/7	43		1/1	2/4	0/1	0/1											1								39:07
25	PARK Sujeong																											1:16
27	SHIN Jaeyeon																											0:44
33	KIM Sejin	S	2/3	67		2/3										2		2						1			60:00	
77	CHOI Minjeong																											4:37
	Team / bench																											
	UKUPNO		33/52	63	5/9	7/8	4/10	3/6	6/8	6/9	2/2			13	9	6	1	15	7	3	0	0	0	3	0	0		

#	Surname and name	Saves / shots								
		Tot.	%	9m	6m	Wing	7m	FB	Brk.	LD
12	KIM Gayeong	12/43	28	3/5	3/11	3/7	0/3	0/1	3/16	
77	CHOI Minjeong									
	TOTAL	12/43	28	3/5	3/11	3/7	0/3	0/1	3/16	0/0

Coach: Jin Soon Kim

Number of attacks: 62, Efficiency: 53%, Average Duration: 29.35 seconds

Attack by type of defense

	Shots	9m	6m	Wing	TF	E7	E2
On def. 6-0	22/36	5/9	7/8	4/10	15	6	1
Fastbreak	6/8				0	0	0

Defense by type

	Total	9m	6m	Wing	Stl.	C7	2m
Def. 5-1	15/27	0/5	3/3	2/7	4	1	0
Def. 4-2	12/19	2/3	5/9	2/2	3	2	3
Fastbreak	1/1				0	0	0

Attack with superiority / minority / goalkeeper out

	Attack				Reaction		
	Att.	Eff.	Shots	TF	FB	LD	Tot.
7 on 6 (GK out)	1	0%	0/0	1	0/0	0/0	0/0
6 on 6 (GK out)	1	0%	0/1	0	0/0	0/0	0/0
6 on 6	53	57%	30/41	12			
6 on 5	3	33%	1/2	1			
5 on 6	4	50%	2/3	1			

Player superiority / GK out counted at the end of attack (in case it changes during attack)

Defense with superiority / minority / goalkeeper out

	Attack				Reaction		
	Att.	Eff.	Shots	TF	FB	LD	Tot.
7 on 6 (GK out)	3	33%	1/2	1	0/0	0/0	0/0
6 on 6 (GK out)	2	50%	1/1	1	0/0	1/1	1/1
6 on 6	53	49%	26/40	13			
7 on 5 (GK out)	1	0%	0/1	0	0/0	1/1	1/1
6 on 5	4	75%	3/4	0			

Numbers show attacking numbers of opponent. Lower efficiency of opponent means better defense of this team

Jersey number Tot. Total shooting 6m 6m (line) shooting 9m 9m shooting Wng Wing shooting FB Fastbreak sh. 7m 7m penalty sh.
 Brk. Breakthrough sh. LD Long distance sh. As. Assists PC Pass clear chance E7 Earned 7m pen. TF Technical faults St. Steals
 2m 2m punishments C7. Committed 7m E2 Earned 2m pun. YC. Yellow cards R/B Red/Blue cards Blk. Blocks S Starting Line-up



IHF Women's Youth (18) World Championship

North Macedonia (Skopje)

Main Round III, 1. round



Match Team Statistics

Match No. 60

Korea 33 - 31 Romania

(17 - 16) (16 - 15)

4.8.2022. 18:30

Attendance: 120

Sport Centre Boris Trajkovski

Referees: Mohamed Chouraki (MAR) / Achraf El Mouniri (MAR)

Shot distribution by player

4 H. Lee 2/2 0/1 1 miss. 1/1 lob	7 S. Kim 1 post	9 H. Ahn 1/1 1/1	10 S. Lim	11 S. Kim 1/2 1/1 2/2 0/1 2/2 1 miss. 0/1 lob	17 Y. Oh	18 J. Kim 1/1 0/1 0/1 1/2 2/2 1 post 1/1 lob
20 K. Lee	21 J. Park	23 M. Kim 4/4 0/1 0/1 1/1 2/2 1/1 1 post 2/2 lob	24 S. Cha 1/1 1/1 0/1 0/1 1 post 1 miss.	25 S. Park	27 J. Shin	33 S. Kim 1/1 1/1 1 post

TOTAL

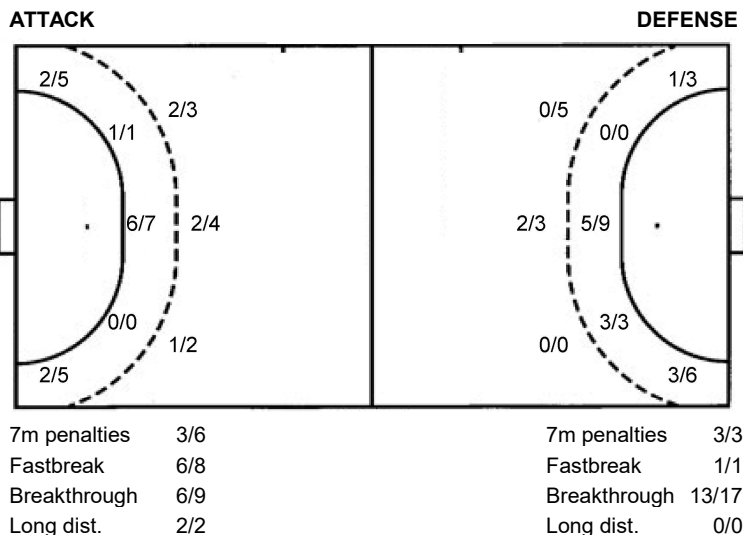
8/9	1/2	1/2
0/3	3/5	1/1
6/7	0/1	9/9

5 post 3 miss. 4/5 lob

Saves distribution goalkeepers

12 G. Kim 1/8 3/3 0/2 3/7 4/5 0/4 0/6 0/3 0/4	77 M. Choi	TOTAL 1/8 3/3 0/2 3/7 4/5 0/4 0/6 0/3 0/4
---------------------------------------------------------------------------------	-------------------	-----------------------------------------------------------------------------

Shots by position



Shooting statistics

Position	Goals	Sav.	Miss.	Post	Blk.	Total	%
Back (9m)	5	3	1	0	0	9	56
Line (6m)	7	0	0	1	0	8	88
Wing	4	3	2	1	0	10	40
7m penalties	3	2	0	1	0	6	50
Fastbreak	6	1	0	1	0	8	75
Breakthrough	6	2	0	1	0	9	67
Total	31	11	3	5	0	50	62

Jersey number Tot. Total shooting 6m 6m (line) shooting 9m 9m shooting Wng Wing shooting FB Fastbreak sh. 7m 7m penalty sh.
 Brk. Breakthrough sh. LD Long distance sh. As. Assists PC Pass clear chance E7 Earned 7m pen. TF Technical faults St. Steals
 2m 2m punishments C7. Committed 7m E2 Earned 2m pun. YC. Yellow cards R/B Red/Blue cards Blk. Blocks S Starting Line-up



IHF Women's Youth (18) World Championship

North Macedonia (Skopje)

Main Round III, 1. round



Match Team Statistics

Match No. 60

Korea 33 - 31 Romania

(17 - 16) (16 - 15)

4.8.2022. 18:30

Attendance: 120

Sport Centre Boris Trajkovski

Referees: Mohamed Chouraki (MAR) / Achraf El Mouniri (MAR)

Romania

#	Surname and name	S	Goals / shots								Attack					Def.			Penalties			TP					
			Tot.	%	9m	6m	Wing	7m	FB	Brk.	LD	As.	PC	E7	E2	TF	St.	C7	Blk	YC	2m		R	B			
1	NEAGU Teodora Diana	S																									29:34
2	MIHAI Mihaela Andreea	S	5/9	56			2/6	3/3							1											1	35:08
4	PREDESCU Vanessa Leona		1/2	50		0/1	1/1																				27:46
5	GRIGORE Anamaria Mihaela	S	6/7	86		2/2			1/1	3/4				1	2		1	1									54:16
6	DAMIAN Teodora Lavinia		3/3	100	1/1					2/2				1	2		1	1									15:06
8	MEZEI Maria Noemi	S	6/8	75		6/8										1											54:20
9	MAXIM Irina Andreea																										1:54
12	DEMETER Maria																										27:54
17	LECU Valentina Elena																										0:01
18	LIXANDROIU Maria Diana	S	4/10	40	1/4					3/6				3	2			1	3								48:03
23	MOZES Orsolya Maria		1/1	100			1/1																				25:10
24	BOICIUC Alisia Lorena	S	5/8	63	0/3					5/5				7	3	2	1	5	2	1				1			60:00
29	PAVEL Denisa Marina																										
44	GROSAN Maria Ioana																										
55	DANCIU Cristina Elisa		0/1	0		0/1																					10:34
77	MOHAMED Mariam Nadia	S	0/1	0		0/1																					30:14
Team / bench																											
UKUPNO			31/50	62	2/8	8/12	4/9	3/3	1/1	13/17	0/0			13	9	3	3	15	7	6	0			1	1	0	0

#	Surname and name	Saves / shots								
		Tot.	%	9m	6m	Wing	7m	FB	Brk.	LD
1	NEAGU Teodora Diana	2/8	25	0/3	0/1	1/2	0/1		1/1	
12	DEMETER Maria	9/34	26	3/5	0/6	2/5	2/4	1/7	1/7	
TOTAL		11/42	26	3/8	0/7	3/7	2/5	1/7	2/8	0/0

Coach: Aurelian Rosca

Number of attacks: 63, Efficiency: 49%, Average Duration: 28.19 seconds

Attack by type of defense

	Shots	9m	6m	Wing	TF	E7	E2
On def. 5-1	15/27	0/5	3/3	2/7	9	1	0
On def. 4-2	12/19	2/3	5/9	2/2	6	2	3
Fastbreak	1/1				0	0	0

Defense by type

	Total	9m	6m	Wing	Stl.	C7	2m
Def. 6-0	22/36	5/9	7/8	4/10	7	6	1
Fastbreak	6/8				0	0	0

Attack with superiority / minority / goalkeeper out

	Attack				Reaction		
	Att.	Eff.	Shots	TF	FB	LD	Tot.
7 on 6 (GK out)	3	33%	1/2	1	0/0	0/0	0/0
6 on 6 (GK out)	2	50%	1/1	1	0/0	1/1	1/1
6 on 6	53	49%	26/40	13			
7 on 5 (GK out)	1	0%	0/1	0	0/0	1/1	1/1
6 on 5	4	75%	3/4	0			

Player superiority / GK out counted at the end of attack (in case it changes during attack)

Defense with superiority / minority / goalkeeper out

	Attack				Reaction		
	Att.	Eff.	Shots	TF	FB	LD	Tot.
7 on 6 (GK out)	1	0%	0/0	1	0/0	0/0	0/0
6 on 6 (GK out)	1	0%	0/1	0	0/0	0/0	0/0
6 on 6	53	57%	30/41	12			
6 on 5	3	33%	1/2	1			
5 on 6	4	50%	2/3	1			

Numbers show attacking numbers of opponent. Lower efficiency of opponent means better defense of this team

Jersey number Tot. Total shooting 6m 6m (line) shooting 9m 9m shooting Wng Wing shooting FB Fastbreak sh. 7m 7m penalty sh.
 Brk. Breakthrough sh. LD Long distance sh. As. Assists PC Pass clear chance E7 Earned 7m pen. TF Technical faults St. Steals
 2m 2m punishments C7. Committed 7m E2 Earned 2m pun. YC. Yellow cards R/B Red/Blue cards Blk. Blocks S Starting Line-up

Handball statistics and livescore by Toma-soft ltd (www.toma-soft.hr)



IHF Women's Youth (18) World Championship

North Macedonia (Skopje)

Main Round III, 1. round



Match Team Statistics

Match No. 60

Korea 33 - 31 Romania

(17 - 16) (16 - 15)

4.8.2022. 18:30

Attendance: 120

Sport Centre Boris Trajkovski

Referees: Mohamed Chouraki (MAR) / Achraf El Mouniri (MAR)

Shot distribution by player

2 M. Mihai 2/2 0/1 1/1 0/1 1/1 1/1 1 post 0/1 lob	4 V. Predescu 0/1 1/1	5 A. Grigore 3/3 1/1 2/2 1 miss.	6 T. Damian 1/1 1/1 1/1	8 M. Mezei 1/1 3/3 0/1 2/2 1 post	9 I. Maxim	17 V. Lecu
18 M. Lixandriou 0/1 0/1 1/1 0/2 0/1 2/2 1/1 1 post	23 O. Mozes 1/1	24 A. Boiciuc 0/1 1/1 3/3 1/1 2 miss.	29 D. Pavel	44 M. Grosan	55 C. Danciu 0/1	77 M. Mohamed 1 post

TOTAL

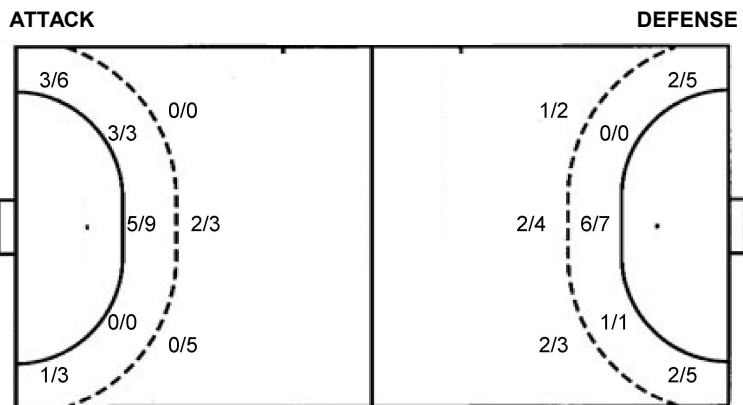
7/8	0/3	2/2
4/7	1/5	4/4
6/6	3/3	4/4

4 post 3 miss. 0/1 lob

Saves distribution goalkeepers

1 T. Neagu 0/4 1/1 0/1 1/1 0/1	12 M. Demeter 1/5 1/2 1/2 2/2 2/4 0/1 1/7 0/8	TOTAL 1/9 1/2 1/2 3/3 2/5 0/1 1/7 1/1 0/9
------------------------------------------------	---------------------------------------------------------------	-----------------------------------------------------------

Shots by position



7m penalties 3/3
Fastbreak 1/1
Breakthrough 13/17
Long dist. 0/0

7m penalties 3/6
Fastbreak 6/8
Breakthrough 6/9
Long dist. 2/2

Shooting statistics

Position	Goals	Sav.	Miss.	Post	Blk.	Total	%
Back (9m)	2	3	2	1	0	8	25
Line (6m)	8	3	0	1	0	12	67
Wing	4	3	0	2	0	9	44
7m penalties	3	0	0	0	0	3	100
Fastbreak	1	0	0	0	0	1	100
Breakthrough	13	3	1	0	0	17	76
Total	31	12	3	4	0	50	62

Jersey number Tot. Total shooting 6m 6m (line) shooting 9m 9m shooting Wng Wing shooting FB Fastbreak sh. 7m 7m penalty sh.
Brk. Breakthrough sh. LD Long distance sh. As. Assists PC Pass clear chance E7 Earned 7m pen. TF Technical faults St. Steals
2m 2m punishments C7. Committed 7m E2 Earned 2m pun. YC. Yellow cards R/B Red/Blue cards Blk. Blocks S Starting Line-up

Handball statistics and livescore by Toma-soft ltd (www.toma-soft.hr)



IHF Women's Youth (18) World Championship

North Macedonia (Skopje)

Main Round III, 1. round



Match Team Statistics

Match No. 60

Korea 33 - 31 Romania

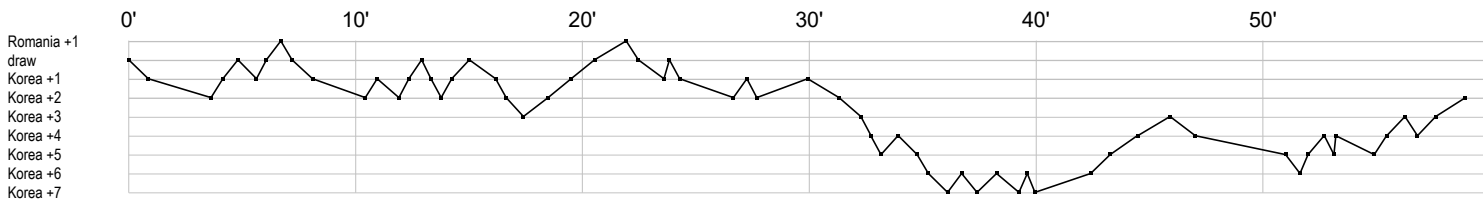
(17 - 16) (16 - 15)

4.8.2022. 18:30

Attendance: 120

Sport Centre Boris Trajkovski

Referees: Mohamed Chouraki (MAR) / Achraf El Mouniri (MAR)



Korea

4 Lee H	p t g g g t ga b f a g ba e p c2 a f
7 Kim S	f
9 Ahn H	g g
10 Lim S	
11 Kim S	f g f bgt 2 g g c p f bgg f
12 Kim G	i s r r r r s s s r r r r r r as r r r r r s r r r s s r r r r r r r r r s sr r r r r sr r
17 Oh Y	
18 Kim J	b p t f aa pa b g t gg g a tf f f g t t
20 Lee K	
21 Park J	
23 Kim M	g t bg g g p p a p t g t fg p a g a g f ef g t eg a t
24 Cha S	g g f f e fg f c
25 Park S	
27 Shin J	
33 Kim S	e e t f t g 2 g
77 Choi M	

Romania

1 Neagu T	r r s r r r rs r
2 Mihai M	f2 ba f g t b g f g f g
4 Predescu V	t t f g
5 Grigore A	p t g g p a g f g i g g
6 Damian T	t a gi p g g p
8 Mezei M	c g g g g f c g c f c e g
9 Maxim I	t
12 Demeter M	r r r r r r r r r r r r sr ss r s s s sr r r r r r r s
17 Lecu V	
18 Lixandrou M	g f f g f t a a p g f b p f f g b ba
23 Mozes O	g
24 Boiciuc A	g a c py g a g t g t b b e t p t t g a a ei a f p a a
29 Pavel D	
44 Grosan M	
55 Danciu C	t t f
77 Mohamed M	t c f

In game	g Goal scored	f Missed shot	a Assist	t Technical faults	b Steal
2 2min suspension	e Earned 7m	c Committed 7m	y Yellow card	r Red Card	k Blue card
i Earned 2min.	x Block	4 4min suspension	p Pass for clear chance	s Saved shot	r Received goal