



# IHF Women's Youth (18) World Championship

North Macedonia (Skopje)

Group H, 3. round



Match Team Statistics

Match No. 37

## Hungary 22 - 21 France

(7 - 7) (15 - 14)

2.8.2022. 18:30

Attendance: 100

Sport Centre Boris Trajkovski

Referees: Youcef Belkhir (ALG) / Sid Ali Hamidi (ALG)

### Hungary

#	Surname and name	S	Goals / shots								Attack				Def.			Penalties			TP				
			Tot.	%	9m	6m	Wing	7m	FB	Brk.	LD	As.	PC	E7	E2	TF	St.	C7	Blk	YC		2m	R	B	
5	CSÍKOS Luca		1/4	25	0/3																			33:07	
7	SIMON Petra		3/7	43	1/1	0/1		2/2	0/1	0/2					1				2	1	1			1	27:32
9	IMRE Szofi	S																							52:36
15	SASS Kincső																								6:36
17	PANYI Anna		0/1	0	0/1																				4:29
18	CSERNYANSZKI Liliána	S	3/4	75						3/4				2	3	2									37:20
21	KISS Csenge																								10:46
22	BUCSI Lili	S	3/6	50	1/4			1/1		1/1				1											33:05
28	ZAJ Klára																								
36	SZABÓ Lili	S																							50:17
50	KÁRMÁN Luca		6/7	86	5/6					1/1				1	2	1									13:47
67	MOLNÁR Dorottya	S	0/2	0			0/2																		47:59
80	KÖVÉR Luca																								15:49
81	FARKAS Júlia	S	3/7	43	0/1		2/4	0/1		1/1				1	1										44:38
96	KOVALCSIK Blanka		0/3	0						0/3															6:16
99	SZABÓ Anna	S	3/7	43			3/7																		35:43
	Team / bench																								
	UKUPNO		22/48	46	7/16	0/1	5/13	3/4	0/1	7/13	0/0			5	8	4	0	9	3	4	0	1	2	0	0

#	Surname and name	Saves / shots								
		Tot.	%	9m	6m	Wing	7m	FB	Brk.	LD
9	IMRE Szofi	10/28	36	4/7		1/8	1/3	0/2	4/8	
15	SASS Kincső	1/4	25			0/2	0/1		1/1	
28	ZAJ Klára									
	TOTAL	11/32	34	4/7	0/0	1/10	1/4	0/2	5/9	0/0

Coach: **Beáta Bohus**

Number of attacks: 50, Efficiency: 44%, Average Duration: 37.48 seconds

### Attack by type of defense

	Shots	9m	6m	Wing	TF	E7	E2
On def. 6-0	17/40	7/16	0/1	3/10	8	4	0
On def. 5-1	2/3	0/0	0/0	2/3	1	0	0
Fastbreak	0/1				0	0	0

### Defense by type

	Total	9m	6m	Wing	Stl.	C7	2m
Def. 6-0	14/32	3/10	0/1	9/12	3	3	2
Def. 5-1	2/5	0/2	0/1	0/0	0	1	0
Fastbreak	2/2				0	0	0

### Attack with superiority / minority / goalkeeper out

	Attack				Reaction		
	Att.	Eff.	Shots	TF	FB	LD	Tot.
7 on 6 (GK out)	1	100%	1/1	0	0/0	0/0	0/0
6 on 6	44	43%	19/35	9			
6 on 5	3	33%	1/3	0			
5 on 6	2	50%	1/2	0			

Player superiority / GK out counted at the end of attack (in case it changes during attack)

### Defense with superiority / minority / goalkeeper out

	Attack				Reaction		
	Att.	Eff.	Shots	TF	FB	LD	Tot.
7 on 6 (GK out)	1	0%	0/1	0	0/0	0/0	0/0
6 on 6 (GK out)	1	0%	0/1	0	0/0	0/0	0/0
6 on 6	44	41%	18/36	8			
5 on 6	1	0%	0/0	1			
6 on 5	3	100%	3/3	0			

Numbers show attacking numbers of opponent. Lower efficiency of opponent means better defense of this team

# Jersey number Tot. Total shooting 6m 6m (line) shooting 9m 9m shooting Wng Wing shooting FB Fastbreak sh. 7m 7m penalty sh.  
 Brk. Breakthrough sh. LD Long distance sh. As. Assists PC Pass clear chance E7 Earned 7m pen. TF Technical faults St. Steals  
 2m 2m punishments C7. Committed 7m E2 Earned 2m pun. YC. Yellow cards R/B Red/Blue cards Blk. Blocks S Starting Line-up

Handball statistics and livescore by Toma-soft ltd (www.toma-soft.hr)



# IHF Women's Youth (18) World Championship

## North Macedonia (Skopje)

Group H, 3. round



### Match Team Statistics

Match No. 37

### Hungary 22 - 21 France

(7 - 7) (15 - 14)

2.8.2022. 18:30

Attendance: 100

Sport Centre Boris Trajkovski

Referees: Youcef Belkhiri (ALG) / Sid Ali Hamidi (ALG)

### Shot distribution by player

#### 5 L. Csíkós

	0/1	
		1/1

2 block

#### 7 P. Simon

1/1		
1/2		1/2

2 post

#### 17 A. Panyi


1 miss.

#### 18 L. Cseryánszki

1/1		
		2/2

1 miss.

#### 21 C. Kiss


#### 22 L. Bucsi

	1/1	
		2/2

2 post 1 miss.

#### 36 L. Szabó


#### 50 L. Kármán

2/2		2/2
		0/1
2/2		

#### 67 D. Molnár

	0/1	
	0/1	

#### 80 L. Kövér


#### 81 J. Farkas

	1/1	
1/1		
	0/1	

2 post 1 miss. 1/1 lob

#### 96 B. Kovalcsik

		0/1
	0/1	
	0/1	

#### 99 A. Szabó

		3/3
	0/2	

2 post

#### TOTAL

4/4	2/2	5/6
2/3	0/5	3/5
2/2	0/3	3/3

8 post 4 miss. 2 block 1/1 lob

### Saves distribution goalkeepers

#### 9 S. Imre

0/1	2/2	0/10
0/1	3/3	1/2
2/2	1/1	1/5

#### 15 K. Sass

	1/2	0/1

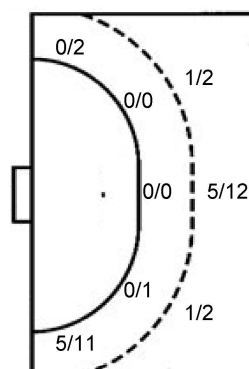
#### 28 K. Zaj


#### TOTAL

0/1	3/4	0/11
0/1	3/3	1/2
2/2	1/1	1/5

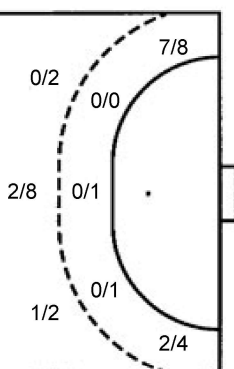
### Shots by position

#### ATTACK



7m penalties 3/4  
Fastbreak 0/1  
Breakthrough 7/13  
Long dist. 0/0

#### DEFENSE



7m penalties 3/4  
Fastbreak 2/2  
Breakthrough 4/11  
Long dist. 0/0

### Shooting statistics

Position	Goals	Sav.	Miss.	Post	Blk.	Total	%
Back (9m)	7	2	2	3	2	16	44
Line (6m)	0	0	0	1	0	1	0
Wing	5	5	1	2	0	13	38
7m penalties	3	0	0	1	0	4	75
Fastbreak	0	1	0	0	0	1	0
Breakthrough	7	4	1	1	0	13	54
<b>Total</b>	<b>22</b>	<b>12</b>	<b>4</b>	<b>8</b>	<b>2</b>	<b>48</b>	<b>46</b>

# Jersey number Tot. Total shooting 6m 6m (line) shooting 9m 9m shooting Wng Wing shooting FB Fastbreak sh. 7m 7m penalty sh.  
Brk. Breakthrough sh. LD Long distance sh. As. Assists PC Pass clear chance E7 Earned 7m pen. TF Technical faults St. Steals  
2m 2m punishments C7. Committed 7m E2 Earned 2m pun. YC. Yellow cards R/B Red/Blue cards Blk. Blocks S Starting Line-up

Handball statistics and livescore by Toma-soft ltd (www.toma-soft.hr)



# IHF Women's Youth (18) World Championship

## North Macedonia (Skopje)

Group H, 3. round



### Match Team Statistics

Match No. 37

## Hungary 22 - 21 France

(7 - 7) (15 - 14)

2.8.2022. 18:30

Attendance: 100

Sport Centre Boris Trajkovski

Referees: Youcef Belkhiri (ALG) / Sid Ali Hamidi (ALG)

### France

#	Surname and name	S	Goals / shots									Attack					Def.			Penalties				TP											
			Tot.	%	9m	6m	Wing	7m	FB	Brk.	LD	As.	PC	E7	E2	TF	St.	C7	Blk	YC	2m	R	B												
1	LAZZARI Emma																																	12:21	
3	RANGIER Marylou																																		
5	ERRARD Manon		1/2	50				1/2																										36:14	
7	LELONG Romane																																		
10	TUCCELLA Emma	S	1/2	50				1/2																										25:11	
12	LEHUALT-PARC Romane																																	0:24	
13	GOLVET Delia		2/2	100				2/2																										11:49	
14	DURY Nina	S	5/6	83				5/6																										46:52	
15	BROQUAIRE Carla		0/1	0			0/1																											19:15	
16	WANDA Shana	S																																46:07	
17	SISSOKO Assa	S	1/2	50	0/1																													23:37	
18	PERRET Nina	S	5/11	45	1/3																													56:28	
20	NIKINDANDA Clemence		0/1	0			0/1																											36:20	
21	BORG Enola	S	3/8	38	2/5																													42:28	
23	LOUVEAU Juliette		0/1	0	0/1																													15:52	
24	BORG Lylou	S	3/7	43	0/2				0/1	1/1	2/3																							47:02	
	Team / bench																																		
	UKUPNO		21/43	49	3/12	0/2	9/12	3/4	2/2	4/11	0/0																								

#	Surname and name	Saves / shots									
		Tot.	%	9m	6m	Wing	7m	FB	Brk.	LD	
1	LAZZARI Emma	1/8	13	1/2			0/3	0/1		0/2	
12	LEHUALT-PARC Romane	0/1	0				0/1				
16	WANDA Shana	11/25	44	1/7			5/7	0/1	1/1	4/9	
	TOTAL	12/34	35	2/9	0/0	5/10	0/3	1/1	4/11	0/0	

Coach: Olivier De Lafuente

Number of attacks: 50, Efficiency: 42%, Average Duration: 37.52 seconds

### Attack by type of defense

	Shots	9m	6m	Wing	TF	E7	E2
On def. 6-0	14/32	3/10	0/1	9/12	9	3	2
On def. 5-1	2/5	0/2	0/1	0/0	0	1	0
Fastbreak	2/2				0	0	0

### Defense by type

	Total	9m	6m	Wing	Stl.	C7	2m
Def. 6-0	17/40	7/16	0/1	3/10	2	4	1
Def. 5-1	2/3	0/0	0/0	2/3	0	0	0
Fastbreak	0/1				0	0	0

### Attack with superiority / minority / goalkeeper out

	Attack				Reaction		
	Att.	Eff.	Shots	TF	FB	LD	Tot.
7 on 6 (GK out)	1	0%	0/1	0	0/0	0/0	0/0
6 on 6 (GK out)	1	0%	0/1	0	0/0	0/0	0/0
6 on 6	44	41%	18/36	8			
5 on 6	1	0%	0/0	1			
6 on 5	3	100%	3/3	0			

Player superiority / GK out counted at the end of attack (in case it changes during attack)

### Defense with superiority / minority / goalkeeper out

	Attack				Reaction		
	Att.	Eff.	Shots	TF	FB	LD	Tot.
7 on 6 (GK out)	1	100%	1/1	0	0/0	0/0	0/0
6 on 6	44	43%	19/35	9			
6 on 5	3	33%	1/3	0			
5 on 6	2	50%	1/2	0			

Numbers show attacking numbers of opponent. Lower efficiency of opponent means better defense of this team

# Jersey number Tot. Total shooting 6m 6m (line) shooting 9m 9m shooting Wng Wing shooting FB Fastbreak sh. 7m 7m penalty sh.  
 Brk. Breakthrough sh. LD Long distance sh. As. Assists PC Pass clear chance E7 Earned 7m pen. TF Technical faults St. Steals  
 2m 2m punishments C7. Committed 7m E2 Earned 2m pun. YC. Yellow cards R/B Red/Blue cards Blk. Blocks S Starting Line-up



# IHF Women's Youth (18) World Championship

## North Macedonia (Skopje)

Group H, 3. round



### Match Team Statistics

Match No. 37

### Hungary 22 - 21 France

(7 - 7) (15 - 14)

2.8.2022. 18:30

Attendance: 100

Sport Centre Boris Trajkovski

Referees: Youcef Belkhiri (ALG) / Sid Ali Hamidi (ALG)

### Shot distribution by player

#### 3 M. Rangier


#### 5 M. Errard

		1/1

1 post

#### 7 R. Lelong


#### 10 E. Tuccella

1/1	0/1	

#### 13 D. Golvet

		1/1

1/1 lob

#### 14 N. Dury

		3/3
		1/1

1 post 1/1 lob

#### 15 C. Broquaire


1 miss.

#### 17 A. Sissoko

		1/1

1 miss.

#### 18 N. Perret

1/1	1/1	
	0/2	1/1
0/1		2/3

2 miss.

#### 20 C. Nikindanda


1 post

#### 21 E. Borg

	0/2	3/3
		0/1

1 post 1 miss.

#### 23 J. Louveau


1 miss.

#### 24 L. Borg

	0/1	3/3
0/1	0/1	

1 post

#### TOTAL

1/1	1/4	11/11
1/1	0/3	1/2
0/2	0/1	4/5

5 post 6 miss. 2/2 lob

### Saves distribution goalkeepers

#### 1 E. Lazzari

0/1		0/4
		1/3

#### 12 R. Lehuat-Parc

		0/1

#### 16 S. Wanda

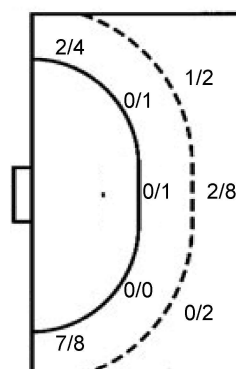
0/3	0/2	1/2
1/3	5/5	1/2
0/2	3/3	0/2

#### TOTAL

0/4	0/2	1/6
1/3	5/5	2/5
0/2	3/3	0/3

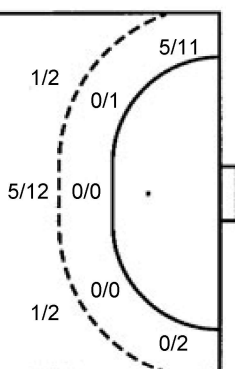
### Shots by position

#### ATTACK



7m penalties	3/4
Fastbreak	2/2
Breakthrough	4/11
Long dist.	0/0

#### DEFENSE



7m penalties	3/4
Fastbreak	0/1
Breakthrough	7/13
Long dist.	0/0

### Shooting statistics

Position	Goals	Sav.	Miss.	Post	Blk.	Total	%
Back (9m)	3	4	4	1	0	12	25
Line (6m)	0	0	1	1	0	2	0
Wing	9	1	0	2	0	12	75
7m penalties	3	1	0	0	0	4	75
Fastbreak	2	0	0	0	0	2	100
Breakthrough	4	5	1	1	0	11	36
<b>Total</b>	<b>21</b>	<b>11</b>	<b>6</b>	<b>5</b>	<b>0</b>	<b>43</b>	<b>49</b>

# Jersey number Tot. Total shooting 6m 6m (line) shooting 9m 9m shooting Wng Wing shooting FB Fastbreak sh. 7m 7m penalty sh.  
 Brk. Breakthrough sh. LD Long distance sh. As. Assists PC Pass clear chance E7 Earned 7m pen. TF Technical faults St. Steals  
 2m 2m punishments C7. Committed 7m E2 Earned 2m pun. YC. Yellow cards R/B Red/Blue cards Blk. Blocks S Starting Line-up

Handball statistics and livescore by Toma-soft ltd (www.toma-soft.hr)

