



# IHF Women's Youth (18) World Championship

## North Macedonia (Skopje)

### Final Round, Finals



Match Team Statistics

Match No. 116

**Denmark 28 - 31 Korea**

(15 - 15) (13 - 16)

10.8.2022. 18:15

Attendance: 1027

Sport Centre Boris Trajkovski

Referees: Youcef Belkhir (ALG) / Sid Ali Hamidi (ALG)

## Denmark

#	Surname and name	S	Goals / shots								Attack					Def.			Penalties			TP										
			Tot.	%	9m	6m	Wing	7m	FB	Brk.	LD	As.	PC	E7	E2	TF	St.	C7	Blk	YC	2m		R	B								
4	SCAGLIONE Julie Mathiesen	S	10/21	48	7/18			1/1									1															34:07
5	BANG Anna Hviid																															
6	LAURSEN Boline Haugaard		0/1	0		0/1																										17:20
7	VESTERGAARD Matilde Marie	S	6/10	60				4/6	2/3	0/1																						59:49
8	NIELSEN Ida Marie Wrang	S	0/2	0																												48:49
9	THESTRUP Laura Maria Borg		2/3	67	1/2																											36:27
10	LARSEN Filippa Nedovic	S	3/4	75		3/4																										37:11
12	KAYSEN Ida Marie Barholm	S																														56:16
14	HOVGAARD-HANSEN Alberte Hojholdt																															
15	DALSAGER Annika Solberg		1/1	100		1/1																										19:56
17	HOLTORF Julia Due		0/1	0		0/1																										8:48
19	HANSEN Laura Galle	S	2/2	100				2/2																								58:24
20	RASMUSSEN Signe Stenderup																															0:45
21	JOHANSEN Anne With	S	4/7	57	1/1																											42:08
26	VENDELBORG Nicoline Astrid																															
Team / bench																																
UKUPNO			28/52	54	9/21	4/7	6/8	3/4	0/1	6/11	0/0	7	5	4	4	10	0	8	0	3	3	0	0									

#	Surname and name	Saves / shots								
		Tot.	%	9m	6m	Wing	7m	FB	Brk.	LD
12	KAYSEN Ida Marie Barholm	15/43	35	2/4	3/7	4/8	0/4	1/3	5/17	
20	RASMUSSEN Signe Stenderup	0/3	0				0/3			
TOTAL		15/46	33	2/4	3/7	4/8	0/7	1/3	5/17	0/0

Coach: Flemming Dam Larsen

Number of attacks: 59, Efficiency: 47%, Average Duration: 32.27 seconds

### Attack by type of defense

	Shots	9m	6m	Wing	TF	E7	E2
On def. 3-3	25/47	9/21	4/7	6/8	10	4	4
Fastbreak	0/1				0	0	0

### Defense by type

	Total	9m	6m	Wing	Stl.	C7	2m
Def. 6-0	20/41	2/6	3/6	4/8	0	8	3
Def. press.	2/2	0/0	1/1	0/0	0	0	0
Fastbreak	2/3				0	0	0

### Attack with superiority / minority / goalkeeper out

	Attack				Reaction		
	Att.	Eff.	Shots	TF	FB	LD	Tot.
6 on 6 (GK out)	3	33%	1/3	0	0/0	0/0	0/0
6 on 5 (GK out)	1	0%	0/0	1	0/0	0/0	0/0
6 on 6	47	47%	22/38	9			
6 on 5	7	71%	5/7	0			
5 on 6	1	0%	0/1	0			

Player superiority / GK out counted at the end of attack (in case it changes during attack)

### Defense with superiority / minority / goalkeeper out

	Attack				Reaction		
	Att.	Eff.	Shots	TF	FB	LD	Tot.
6 on 6 (GK out)	3	67%	2/3	0	0/0	0/0	0/0
6 on 6	48	52%	25/41	7			
5 on 6	2	100%	2/2	0			
7 on 5 (GK out)	1	0%	0/1	0	0/0	0/0	0/0
6 on 5 (GK out)	1	100%	1/1	0	0/0	0/0	0/0
6 on 5	4	25%	1/3	1			

Numbers show attacking numbers of opponent. Lower efficiency of opponent means better defense of this team

# Jersey number Tot. Total shooting 6m 6m (line) shooting 9m 9m shooting Wng Wing shooting FB Fastbreak sh. 7m 7m penalty sh.  
 Brk. Breakthrough sh. LD Long distance sh. As. Assists PC Pass clear chance E7 Earned 7m pen. TF Technical faults St. Steals  
 2m 2m punishments C7. Committed 7m E2 Earned 2m pun. YC. Yellow cards R/B Red/Blue cards Blk. Blocks S Starting Line-up



# IHF Women's Youth (18) World Championship

## North Macedonia (Skopje)

### Final Round, Finals



Match Team Statistics

Match No. 116

## Denmark 28 - 31 Korea

(15 - 15) (13 - 16)

10.8.2022. 18:15

Attendance: 1027

Sport Centre Boris Trajkovski

Referees: Youcef Belkhiri (ALG) / Sid Ali Hamidi (ALG)

### Shot distribution by player

4 J. Scaglione

1/2		1/1
		1/1
2/4	1/2	3/4

3 post 3 miss. 1/1 lob

5 A. Bang


6 B. Laursen


1 post

7 M. Vestergaard

		1/1
1/1		
1/2		2/2

2 post 1/2 lob

8 I. Nielsen


2 post

9 L. Thestrup

		0/1
		2/2

10 F. Larsen

	1/1	2/2

1 post

14 A. Hovgaard-Hanser


15 A. Dalsager

1/1		

17 J. Holtorf


1 miss.

19 L. Hansen

	1/1	

1/1 lob

21 A. Johansen

		1/2
1/1		
1/2	0/1	1/1

26 N. Vendelborg


TOTAL

2/3		3/5
2/2		1/1
4/8	3/5	10/11

9 post 4 miss. 3/4 lob

### Saves distribution goalkeepers

12 I. Kaysen

0/6	6/7	1/4
3/5		2/3
1/3	1/2	1/7

20 S. Rasmussen

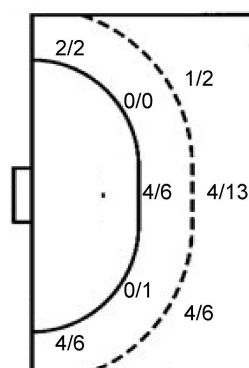
0/1		0/1
0/1		

TOTAL

0/7	6/7	1/5
3/6		2/3
1/3	1/2	1/7

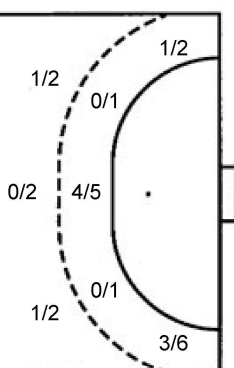
### Shots by position

ATTACK



7m penalties 3/4  
Fastbreak 0/1  
Breakthrough 6/11  
Long dist. 0/0

DEFENSE



7m penalties 7/8  
Fastbreak 2/3  
Breakthrough 12/22  
Long dist. 0/0

### Shooting statistics

Position	Goals	Sav.	Miss.	Post	Blk.	Total	%
Back (9m)	9	6	3	3	0	21	43
Line (6m)	4	0	1	2	0	7	57
Wing	6	1	0	1	0	8	75
7m penalties	3	0	0	1	0	4	75
Fastbreak	0	1	0	0	0	1	0
Breakthrough	6	3	0	2	0	11	55
<b>Total</b>	<b>28</b>	<b>11</b>	<b>4</b>	<b>9</b>	<b>0</b>	<b>52</b>	<b>54</b>

# Jersey number Tot. Total shooting 6m 6m (line) shooting 9m 9m shooting Wng Wing shooting FB Fastbreak sh. 7m 7m penalty sh.  
Brk. Breakthrough sh. LD Long distance sh. As. Assists PC Pass clear chance E7 Earned 7m pen. TF Technical faults St. Steals  
2m 2m punishments C7. Committed 7m E2 Earned 2m pun. YC. Yellow cards R/B Red/Blue cards Blk. Blocks S Starting Line-up

Handball statistics and livescore by Toma-soft ltd (www.toma-soft.hr)



# IHF Women's Youth (18) World Championship

## North Macedonia (Skopje)

### Final Round, Finals



Match Team Statistics

Match No. 116

## Denmark 28 - 31 Korea

(15 - 15) (13 - 16)

10.8.2022. 18:15

Attendance: 1027

Sport Centre Boris Trajkovski

Referees: Youcef Belkhiri (ALG) / Sid Ali Hamidi (ALG)

### Korea

Players		Goals / shots									Attack					Def.			Penalties			TP		
#	Surname and name	S	Tot.	%	9m	6m	Wing	7m	FB	Brk.	LD	As.	PC	E7	E2	TF	St.	C7	Blk	YC	2m		R	B
4	LEE Hyewon	S	7/9	78	1/2					6/7		1	3	2		2	1							50:57
7	KIM Songwon		0/1	0			0/1																	7:10
9	AHN Hyein																				1			4:51
10	LIM Seoyoung		0/2	0	0/1					0/1						1		1						19:18
11	KIM Seojin	S	2/4	50			1/2		1/2						1	1	2				1	1		59:01
12	KIM Gayeong	S													1									52:59
17	OH Yeana																							
18	KIM Jia	S	3/11	27	1/3				1/1	1/7		2	2	2	1	3	2	2						48:02
20	LEE Kyuhee																							
21	PARK Jihyeon																							
23	KIM Minseo	S	9/13	69	0/1			5/6		4/6		3	5											60:00
24	CHA Seoyeon	S	5/7	71			3/5	2/2							1			1						52:07
25	PARK Sujeong																							
27	SHIN Jaeyeon																							2:46
33	KIM Sejin	S	5/7	71	4/6					1/1					3	1						1		57:52
77	CHOI Minjeong																							4:57
	Team / bench																							
	UKUPNO		31/54	57	2/6	4/7	4/8	7/8	2/3	12/22	0/0	6	10	8	3	8	5	4	0	1	4	0	0	

Goalkeepers		Saves / shots								
#	Surname and name	Tot.	%	9m	6m	Wing	7m	FB	Brk.	LD
12	KIM Gayeong	11/36	31	6/14	0/3	1/7	0/2	1/1	3/9	
77	CHOI Minjeong	0/3	0	0/1	0/1		0/1			
	TOTAL	11/39	28	6/15	0/4	1/7	0/3	2/1	3/9	0/0

Coach: Jin Soon Kim

Number of attacks: 59, Efficiency: 53%, Average Duration: 28.47 seconds

### Attack by type of defense

	Shots	9m	6m	Wing	TF	E7	E2
On def. 6-0	20/41	2/6	3/6	4/8	8	8	3
On def. press.	2/2	0/0	1/1	0/0	0	0	0
Fastbreak	2/3				0	0	0

### Defense by type

	Total	9m	6m	Wing	Stl.	C7	2m
Def. 3-3	25/47	9/21	4/7	6/8	5	4	4
Fastbreak	0/1				0	0	0

### Attack with superiority / minority / goalkeeper out

	Attack				Reaction		
	Att.	Eff.	Shots	TF	FB	LD	Tot.
6 on 6 (GK out)	3	67%	2/3	0	0/0	0/0	0/0
6 on 6	48	52%	25/41	7			
5 on 6	2	100%	2/2	0			
7 on 5 (GK out)	1	0%	0/1	0	0/0	0/0	0/0
6 on 5 (GK out)	1	100%	1/1	0	0/0	0/0	0/0
6 on 5	4	25%	1/3	1			

Player superiority / GK out counted at the end of attack (in case it changes during attack)

### Defense with superiority / minority / goalkeeper out

	Attack				Reaction		
	Att.	Eff.	Shots	TF	FB	LD	Tot.
6 on 6 (GK out)	3	33%	1/3	0	0/0	0/0	0/0
6 on 5 (GK out)	1	0%	0/0	1	0/0	0/0	0/0
6 on 6	47	47%	22/38	9			
6 on 5	7	71%	5/7	0			
5 on 6	1	0%	0/1	0			

Numbers show attacking numbers of opponent. Lower efficiency of opponent means better defense of this team

# Jersey number Tot. Total shooting 6m 6m (line) shooting 9m 9m shooting Wng Wing shooting FB Fastbreak sh. 7m 7m penalty sh.  
 Brk. Breakthrough sh. LD Long distance sh. As. Assists PC Pass clear chance E7 Earned 7m pen. TF Technical faults St. Steals  
 2m 2m punishments C7. Committed 7m E2 Earned 2m pun. YC. Yellow cards R/B Red/Blue cards Blk. Blocks S Starting Line-up



# IHF Women's Youth (18) World Championship

## North Macedonia (Skopje)

### Final Round, Finals



#### Match Team Statistics

Match No. 116

## Denmark 28 - 31 Korea

(15 - 15) (13 - 16)

10.8.2022. 18:15

Attendance: 1027

Sport Centre Boris Trajkovski

Referees: Youcef Belkhiri (ALG) / Sid Ali Hamidi (ALG)

#### Shot distribution by player

<b>4 H. Lee</b>	<b>7 S. Kim</b>	<b>9 H. Ahn</b>	<b>10 S. Lim</b>	<b>11 S. Kim</b>	<b>17 Y. Oh</b>	<b>18 J. Kim</b>
1/1			0/2			0/1
1/1				0/1		0/1
	0/1					1/2
				1/1		1/1
2/2 lob				1/1 lob		3 post 2 miss. 1/1 lob
<b>20 K. Lee</b>	<b>21 J. Park</b>	<b>23 M. Kim</b>	<b>24 S. Cha</b>	<b>25 S. Park</b>	<b>27 J. Shin</b>	<b>33 S. Kim</b>
		4/4	1/1			1/1
		0/1	1/2			0/2
			1/1			1/1
			0/1			2/2
		3 post 1/1 lob	1/1 lob			1/1

#### TOTAL

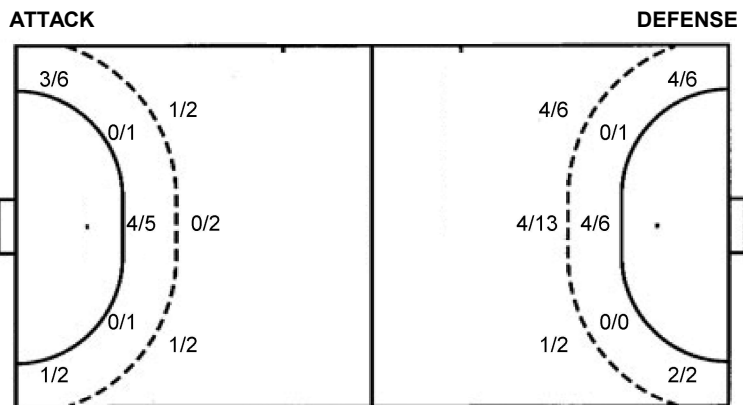
7/7	1/7	4/5
3/6		1/3
2/3	1/2	6/7

6 post 2 miss. 6/6 lob

#### Saves distribution goalkeepers

<b>12 G. Kim</b>	<b>77 M. Choi</b>	<b>TOTAL</b>
1/2	0/1	1/3
0/2		0/2
4/8	2/5	4/8
2/4	0/1	2/5
0/1	0/1	0/1
1/10	0/1	1/11

#### Shots by position



7m penalties 7/8  
Fastbreak 2/3  
Breakthrough 12/22  
Long dist. 0/0

#### Shooting statistics

Position	Goals	Sav.	Miss.	Post	Blk.	Total	%
Back (9m)	2	2	1	1	0	6	33
Line (6m)	4	3	0	0	0	7	57
Wing	4	4	0	0	0	8	50
7m penalties	7	0	0	1	0	8	88
Fastbreak	2	1	0	0	0	3	67
Breakthrough	12	5	1	4	0	22	55
<b>Total</b>	<b>31</b>	<b>15</b>	<b>2</b>	<b>6</b>	<b>0</b>	<b>54</b>	<b>57</b>

7m penalties 3/4  
Fastbreak 0/1  
Breakthrough 6/11  
Long dist. 0/0

# Jersey number Tot. Total shooting 6m 6m (line) shooting 9m 9m shooting Wng Wing shooting FB Fastbreak sh. 7m 7m penalty sh.  
Brk. Breakthrough sh. LD Long distance sh. As. Assists PC Pass clear chance E7 Earned 7m pen. TF Technical faults St. Steals  
2m 2m punishments C7. Committed 7m E2 Earned 2m pun. YC. Yellow cards R/B Red/Blue cards Blk. Blocks S Starting Line-up

