



IHF Women's Youth (18) World Championship

North Macedonia (Skopje)

Group A, 1. round



Match Team Statistics

Match No. 8

Sweden 17 - 22 Iceland

(9 - 11) (8 - 11)

30.7.2022. 12:30

Attendance: 55

Sport Centre Jane Sandanski

Referees: Kristof Altmar (HUN) / Marton Horvath (HUN)

Sweden

#	Surname and name	S	Goals / shots								Attack					Def.			Penalties			TP			
			Tot.	%	9m	6m	Wing	7m	FB	Brk.	LD	As.	PC	E7	E2	TF	St.	C7	Blk	YC	2m		R	B	
1	BERGFELDT Line																							27:25	
3	QVARFORDT Julia		0/2	0						0/2														6:09	
5	KARLSSON Sol	S	0/1	0				0/1																49:47	
6	SALMI Alice		1/2	50		1/2												1						16:35	
7	HUSELIUS Stella	S	3/5	60			1/2	0/1	1/1	1/1					2	1								60:00	
8	LJUNGHOLM Isa	S	0/3	0	0/1	0/1		0/1							1				1					44:03	
9	MIHAILOVIC Emma		1/5	20	1/4			0/1							1	2	2		1	1				18:25	
10	KYLBERG Thea	S	7/9	78	3/5			1/1		3/3					2	1	1	3		1			2	53:02	
11	WIKSFORS Stina	S	0/1	0		0/1												1		2			1	38:19	
13	LÖNNEGREN Elise		0/3	0	0/2			0/1							1									6:42	
16	WALL Ida	S																						13:54	
17	WAHLBERG Freja		1/1	100						1/1													1	10:47	
20	CARLSSON Tindra		2/5	40	1/3					1/2														18:05	
23	SHULTZ Ebba																								
28	GRANAT Felicia	S	2/5	40		0/1				2/4					1	1	1	2						50:04	
29	NORSTEN VIKSTRÖM Felicia		0/2	0			0/2											2						6:43	
	Team / bench																								
	UKUPNO		17/44	39	5/15	1/5	1/6	1/4	1/3	8/11	0/0				2	5	4	2	13	5	4	1	0	5	0

#	Surname and name	Saves / shots								
		Tot.	%	9m	6m	Wing	7m	FB	Brk.	LD
1	BERGFELDT Line	7/21	33	1/2	0/1	5/8	0/2	0/1	1/7	
16	WALL Ida	0/6	0		0/1	0/2	0/1	0/2		
	TOTAL	7/27	26	1/2	0/2	5/10	0/3	0/3	1/7	0/0

Coach: Tomas Axné

Number of attacks: 51, Efficiency: 33%, Average Duration: 35.02 seconds

Attack by type of defense

	Shots	9m	6m	Wing	TF	E7	E2
On def. 6-0	15/37	5/15	1/5	1/6	13	4	2
Fastbreak	1/3				0	0	0

Defense by type

	Total	9m	6m	Wing	Stl.	C7	2m
Def. 6-0	10/22	1/4	1/1	4/12	5	4	4
Def. 5-1	4/6	0/1	1/2	1/1	0	0	1
Fastbreak	3/3				0	0	0

Attack with superiority / minority / goalkeeper out

	Attack				Reaction		
	Att.	Eff.	Shots	TF	FB	LD	Tot.
7 on 6 (GK out)	3	0%	0/3	0	0/0	0/0	0/0
6 on 6 (GK out)	6	50%	3/5	1	0/0	1/1	1/1
6 on 6	37	30%	11/26	11			
6 on 5	3	67%	2/2	1			
5 on 6	2	50%	1/2	0			

Player superiority / GK out counted at the end of attack (in case it changes during attack)

Defense with superiority / minority / goalkeeper out

	Attack				Reaction		
	Att.	Eff.	Shots	TF	FB	LD	Tot.
7 on 6 (GK out)	4	25%	1/2	2	0/0	0/0	0/0
6 on 6 (GK out)	1	0%	0/1	0	0/0	0/0	0/0
6 on 6	35	40%	14/25	10			
5 on 6	1	0%	0/0	1			
7 on 5 (GK out)	3	67%	2/2	1	0/0	0/0	0/0
6 on 5 (GK out)	1	100%	1/1	0	0/0	0/0	0/0
6 on 5	6	67%	4/4	2			

Numbers show attacking numbers of opponent. Lower efficiency of opponent means better defense of this team

Jersey number Tot. Total shooting 6m 6m (line) shooting 9m 9m shooting Wng Wing shooting FB Fastbreak sh. 7m 7m penalty sh.
 Brk. Breakthrough sh. LD Long distance sh. As. Assists PC Pass clear chance E7 Earned 7m pen. TF Technical faults St. Steals
 2m 2m punishments C7. Committed 7m E2 Earned 2m pun. YC. Yellow cards R/B Red/Blue cards Blk. Blocks S Starting Line-up

Handball statistics and livescore by Toma-soft ltd (www.toma-soft.hr)



IHF Women's Youth (18) World Championship

North Macedonia (Skopje)

Group A, 1. round



Match Team Statistics

Match No. 8

Sweden 17 - 22 Iceland

(9 - 11) (8 - 11)

30.7.2022. 12:30

Attendance: 55

Sport Centre Jane Sandanski

Referees: Kristof Altmar (HUN) / Marton Horvath (HUN)

Shot distribution by player

3 J. Qvarfordt 0/1 0/1	5 S. Karlsson 1 post	6 A. Salmi 1/1 lob 0/1	7 S. Huselius 2/2 0/2 1/1	8 I. Ljungholm 2 post 0/1	9 E. Mihailovic 3 miss. 1/1 0/1	10 T. Kylberg 1 post 1/1 3/3 0/1 1/1
11 S. Wiksfors 0/1	13 E. Lönnegren 2 miss. 0/1	17 F. Wahlberg 1/1	20 T. Carlsson 2 miss. 1/1 1/2	23 E. Shultz	28 F. Granat 2 post 2/2 0/1	29 F. Norsten Vikström 0/1 0/1

TOTAL

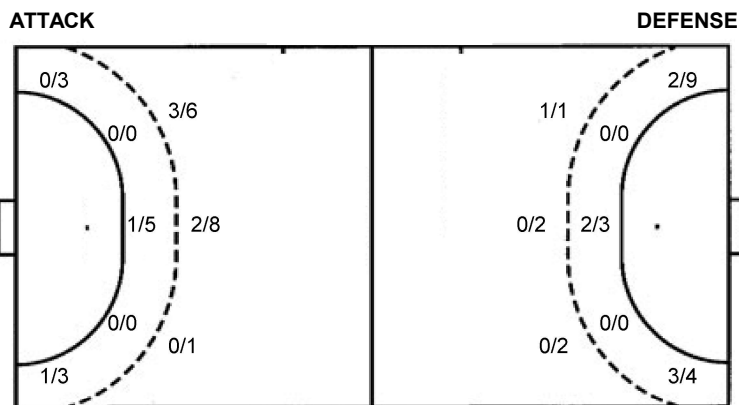
5/6	2/5	2/4
2/2		3/5
0/3	0/1	2/4

6 post 7 miss. 1/1 lob

Saves distribution goalkeepers

1 L. Bergfeldt 5/6 0/1 0/1 2/4 0/2 0/4 0/3	16 I. Wall 0/4 0/1 0/1	TOTAL 5/10 2/4 0/2 0/3 0/1 0/2 0/5
--	--	--

Shots by position



7m penalties 1/4
Fastbreak 1/3
Breakthrough 8/11
Long dist. 0/0

7m penalties 3/4
Fastbreak 3/3
Breakthrough 6/7
Long dist. 2/2

Shooting statistics

Position	Goals	Sav.	Miss.	Post	Blk.	Total	%
Back (9m)	5	3	6	1	0	15	33
Line (6m)	1	3	0	1	0	5	20
Wing	1	3	1	1	0	6	17
7m penalties	1	2	0	1	0	4	25
Fastbreak	1	2	0	0	0	3	33
Breakthrough	8	1	0	2	0	11	73
Total	17	14	7	6	0	44	39

Jersey number Tot. Total shooting 6m 6m (line) shooting 9m 9m shooting Wng Wing shooting FB Fastbreak sh. 7m 7m penalty sh.
Brk. Breakthrough sh. LD Long distance sh. As. Assists PC Pass clear chance E7 Earned 7m pen. TF Technical faults St. Steals
2m 2m punishments C7. Committed 7m E2 Earned 2m pun. YC. Yellow cards R/B Red/Blue cards Blk. Blocks S Starting Line-up

Handball statistics and livescore by Toma-soft ltd (www.toma-soft.hr)



IHF Women's Youth (18) World Championship

North Macedonia (Skopje)

Group A, 1. round



Match Team Statistics

Match No. 8

Sweden 17 - 22 Iceland

(9 - 11) (8 - 11)

30.7.2022. 12:30

Attendance: 55

Sport Centre Jane Sandanski

Referees: Kristof Altmar (HUN) / Marton Horvath (HUN)

Iceland

#	Surname and name	S	Goals / shots								Attack					Def.			Penalties			TP										
			Tot.	%	9m	6m	Wing	7m	FB	Brk.	LD	As.	PC	E7	E2	TF	St.	C7	Blk	YC	2m		R	B								
2	THORKEÐSÐÓTTIR Elin Klara	S	5/5	100												3/3	2/2			2	4	2	4	4						56:26		
3	ODDSÐÓTTIR HAGALÍN Alfa Brá		1/2	50	0/1											1/1					1			2	1					13:09		
4	BENEDIKTSÐÓTTIR Brynja Katrín																													4:21		
5	TRAUÐSÐÓTTIR Tinna Sigurrós	S	3/4	75	0/1						1/1	2/2								3	1			5	1	1			1	58:20		
6	ÁSMUNDSÐÓTTIR Katrín Anna		1/1	100				1/1													1									29:38		
7	JÓNSÐÓTTIR Hildur Lilja																															
8	JÓHANNSÐÓTTIR Inga Dís	S	1/4	25	1/3						0/1									2	3			1					1	59:41		
10	MELSTED BJÖRGVINSÐÓTTIR Thelma																															
11	GUDMUNDSÐÓTTIR Rakef Oddný		1/2	50				1/2																					1	24:12		
12	BJARNASEN Ethel Gyda																														36:08	
14	ELIÐSÐÓTTIR Elísa	S	2/3	67		2/3																1		1		1					48:31	
16	BRYNJARSÐÓTTIR Ingunn María	S																													16:28	
17	RICHARDSÐÓTTIR Sara Dröfn	S	2/3	67				2/3																1	1						28:55	
18	ÁGÚSTSDÓTTIR Lilja	S	5/12	42				1/7	3/4	1/1												1	1	1	1						34:47	
19	STEINDÓRSÐÓTTIR Embla		1/1	100						1/1														1							9:24	
29	SIGSTEINSÐÓTTIR Sonja Lind																															
	Team / bench																												1			
	UKUPNO		22/37	59	1/5	2/3	5/13	3/4	3/3	6/7	2/2										7	10	4	5	16	3	4	0	1	3	0	0

#	Surname and name	Saves / shots								
		Tot.	%	9m	6m	Wing	7m	FB	Brk.	LD
12	BJARNASEN Ethel Gyda	14/22	64	3/6	3/3	3/4	2/3	2/2	1/4	
16	BRYNJARSÐÓTTIR Ingunn María	0/9	0	0/2	0/1			0/1	0/5	
	TOTAL	14/31	45	3/8	3/4	3/4	2/3	2/3	1/9	0/0

Coach: Ágúst Thór Jóhannsson

Number of attacks: 51, Efficiency: 43%, Average Duration: 36.28 seconds

Attack by type of defense

	Shots	9m	6m	Wing	TF	E7	E2
On def. 6-0	10/22	1/4	1/1	4/12	15	4	4
On def. 5-1	4/6	0/1	1/2	1/1	1	0	1
Fastbreak	3/3				0	0	0

Defense by type

	Total	9m	6m	Wing	Stl.	C7	2m
Def. 6-0	15/37	5/15	1/5	1/6	3	4	3
Fastbreak	1/3				0	0	0

Attack with superiority / minority / goalkeeper out

	Attack				Reaction		
	Att.	Eff.	Shots	TF	FB	LD	Tot.
7 on 6 (GK out)	4	25%	1/2	2	0/0	0/0	0/0
6 on 6 (GK out)	1	0%	0/1	0	0/0	0/0	0/0
6 on 6	35	40%	14/25	10			
5 on 6	1	0%	0/0	1			
7 on 5 (GK out)	3	67%	2/2	1	0/0	0/0	0/0
6 on 5 (GK out)	1	100%	1/1	0	0/0	0/0	0/0
6 on 5	6	67%	4/4	2			

Player superiority / GK out counted at the end of attack (in case it changes during attack)

Defense with superiority / minority / goalkeeper out

	Attack				Reaction		
	Att.	Eff.	Shots	TF	FB	LD	Tot.
7 on 6 (GK out)	3	0%	0/3	0	0/0	0/0	0/0
6 on 6 (GK out)	6	50%	3/5	1	0/0	1/1	1/1
6 on 6	37	30%	11/26	11			
6 on 5	3	67%	2/2	1			
5 on 6	2	50%	1/2	0			

Numbers show attacking numbers of opponent. Lower efficiency of opponent means better defense of this team

Jersey number Tot. Total shooting 6m 6m (line) shooting 9m 9m shooting Wng Wing shooting FB Fastbreak sh. 7m 7m penalty sh.
 Brk. Breakthrough sh. LD Long distance sh. As. Assists PC Pass clear chance E7 Earned 7m pen. TF Technical faults St. Steals
 2m 2m punishments C7. Committed 7m E2 Earned 2m pun. YC. Yellow cards R/B Red/Blue cards Blk. Blocks S Starting Line-up

Handball statistics and livescore by Toma-soft ltd (www.toma-soft.hr)



IHF Women's Youth (18) World Championship

North Macedonia (Skopje)

Group A, 1. round



Match Team Statistics

Match No. 8

Sweden 17 - 22 Iceland

(9 - 11) (8 - 11)

30.7.2022. 12:30

Attendance: 55

Sport Centre Jane Sandanski

Referees: Kristof Altmar (HUN) / Marton Horvath (HUN)

Shot distribution by player

2 E. Thorkelsdóttir

	1/1	1/1
	1/1	
	2/2	

3 A. Oddsdóttir Hagalín

	0/1	
		1/1

4 B. Benediktsdóttir

5 T. Traustadóttir

	1/1	2/2

1 post

6 K. Ásmundsdóttir

	1/1	

7 H. Jónsdóttir

8 I. Jóhannsdóttir

	0/1	
		1/1

1 miss. 1 block

10 T. Melsted Björgvinsdóttir

11 R. Gudmundsdóttir

	0/1	
		1/1

14 E. Elíasdóttir

	1/1	1/1

1 post

17 S. Richardsdóttir

	1/2	
	1/1	

18 L. Ágústsdóttir

	1/4	
	1/1	3/3

1 post 3 miss.

19 E. Steindórsdóttir

		1/1

29 S. Sigsteinsdóttir

TOTAL

5/10	2/4	3/3
	1/1	2/2
2/2	2/2	5/5

3 post 4 miss. 1 block

Saves distribution goalkeepers

12 E. Bjarnasen

1/2	3/5	2/3
0/1		2/5
3/3	1/1	2/2

16 I. Brynjarsdóttir

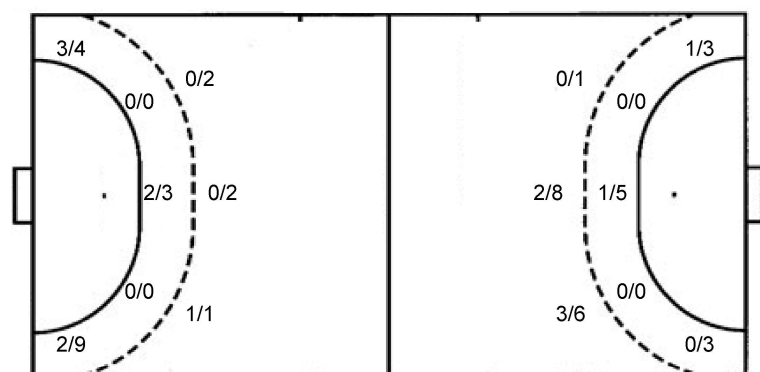
0/4		0/1
0/1		
		0/2

TOTAL

1/6	3/5	2/4
0/2		2/5
3/3	1/1	2/4

Shots by position

ATTACK



7m penalties 3/4
Fastbreak 3/3
Breakthrough 6/7
Long dist. 2/2

DEFENSE

7m penalties 1/4
Fastbreak 1/3
Breakthrough 8/11
Long dist. 0/0

Shooting statistics

Position	Goals	Sav.	Miss.	Post	Blk.	Total	%
Back (9m)	1	1	1	1	1	5	20
Line (6m)	2	0	0	1	0	3	67
Wing	5	5	3	0	0	13	38
7m penalties	3	0	0	1	0	4	75
Fastbreak	3	0	0	0	0	3	100
Breakthrough	6	1	0	0	0	7	86
Total	20	7	4	3	1	35	57

Jersey number Tot. Total shooting 6m 6m (line) shooting 9m 9m shooting Wng Wing shooting FB Fastbreak sh. 7m 7m penalty sh.
Brk. Breakthrough sh. LD Long distance sh. As. Assists PC Pass clear chance E7 Earned 7m pen. TF Technical faults St. Steals
2m 2m punishments C7. Committed 7m E2 Earned 2m pun. YC. Yellow cards R/B Red/Blue cards Blk. Blocks S Starting Line-up

Handball statistics and livescore by Toma-soft ltd (www.toma-soft.hr)



IHF Women's Youth (18) World Championship

North Macedonia (Skopje)

Group A, 1. round



Match Team Statistics

Match No. 8

Sweden 17 - 22 Iceland

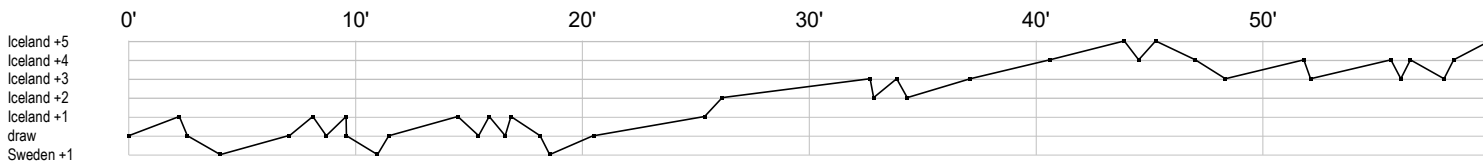
(9 - 11) (8 - 11)

30.7.2022. 12:30

Attendance: 55

Sport Centre Jane Sandanski

Referees: Kristof Altmar (HUN) / Marton Horvath (HUN)



Sweden

1 Bergfeldt L	r r s s r	r r	r r s r	r s r r	ss	r s	r r r
3 Qvarfordt J		bf	f				
5 Karlsson S	f						
6 Salmi A		g	c				f
7 Huselius S	bg	g		t	ft	g	f
8 Ljungholm I			ff	2	t	xf	
9 Mihailovic E		a f g	t e	b f	f		f e p
10 Kylberg T	g f t	p t	2c		f g g e	g gi	t g p 2 g
11 Wiksfors S		o2			t	c	f
13 Lönnegren E			f f t			f	a
16 Wall I	r r r r	r	r				
17 Wahlberg F		g				2	
20 Carlsson T		g	b	f f			g f
23 Shultz E			b				
28 Granat F	t f	gf gi		p	f	t e	
29 Norsten			t	f			t

Iceland

2 Thorkelsdóttir	a p	a t	ei	g t	t t	e p i g	c g	gi	p	i	p g
3 Oddsdóttir				f	pg c	t				t	
4 Benediktsdóttir											
5 Traustadóttir	t a	2g	t	t	t	b a	p c	g	t	f a g	
6 Ásmundsdóttir								p		g	
7 Jónsdóttir H											
8 Jóhannsdóttir				t	g	p p	ff	p	2	a f	
10 Melsted											
11 Gudmundsdóttir								f 2			
12 Bjarnasen E				s	s s	ss s	r r s	s	s	r	rs r
14 Eliasdóttir E	g							e			g f c t
16 Brynjarsdóttir	r r	r r	r	r	r r r						
17 Richardsdóttir	b	g	t			g			f		
18 Ágústsdóttir L	g f	g	bg	ieg	f	f f t	ff	g	f		
19 Steindórsdóttir			t		g						
29 Sigsteinsdóttir											

In game	g Goal scored	f Missed shot	a Assist	t Technical faults	b Steal
2 2min suspension	e Earned 7m	c Committed 7m	y Yellow card	r Red Card	k Blue card
i Earned 2min.	x Block	4 4min suspension	p Pass for clear chance	s Saved shot	r Received goal