



23rd IHF Women's Junior (U20) World Championship

Slovenia (Celje and Laško)

Final Round, 9-10. place



Match Team Statistics

Match No. 98

Japan 35 - 27 Montenegro

(18 - 12) (17 - 15)

1.7.2022. 14:00

Attendance: 80

Arena Zlatorog

Referees: Alexei Covalciuc (MDA) / Igor Covalciuc (MDA)

Japan

#	Surname and name	S	Goals / shots									Attack					Def.			Penalties				TP								
			Tot.	%	9m	6m	Wing	7m	FB	Brk.	LD	As.	PC	E7	E2	TF	St.	C7	Blk	YC	2m	R	B									
1	KATO Aimi																															0:16
3	OTANI Ayano																															3:39
4	KAKEMOTO Shino		2/3	67			2/3									1																22:24
5	FUKUI Sumire		1/3	33	0/1					0/1	1/1				1						1											18:29
6	HAMAGUCHI Mao		0/1	0	0/1										1						1											0:43
7	FUJIWARA Hinata	S	3/4	75	2/3					1/1					2						1											40:52
8	YOSHINO Sanju	S	2/3	67			2/3								1																	59:55
9	MASUZAWA Yuna	S	2/2	100			1/1							1/1							1					1					40:25	
11	ISHIKAWA Sora	S	11/17	65	4/7	1/2			0/1			4/5	2/2		1	2				4	1										39:56	
13	HIGUCHI Reona	S	3/4	75	1/1				0/1			2/2				2				2												40:32
14	HATSUMI Hanako	S																			1											47:36
15	ITO Yui		2/3	67		1/2										1	1			1												26:21
16	NAKAMURA Rino	S	1/1	100										1/1						1												57:14
17	MIZUTANI Akari		4/6	67	1/1	0/1			0/1	1/1	2/2				1	2																19:39
18	OYAMA Akane		1/2	50			0/1							1/1							1											
19	HOKAGUCHI Wakana		3/3	100	1/1							2/2																				1:59
Team / bench																																
UKUPNO			35/52	67	9/15	2/5	5/8	0/3	2/3	11/12	6/6				6	6	3	2	7	3	4	0	0	0	1	0	0					

#	Surname and name	Saves / shots								
		Tot.	%	9m	6m	Wing	7m	FB	Brk.	LD
1	KATO Aimi	0/5	0	0/1	0/1	0/1	0/1		0/1	
16	NAKAMURA Rino	12/34	35	2/2	3/12	1/7	0/2	1/1	5/10	
TOTAL		12/39	31	2/3	3/13	1/8	0/3	1/1	5/11	0/0

Coach: Shota Arai

Number of attacks: 56, Efficiency: 63%, Average Duration: 33.38 seconds

Attack by type of defense

	Shots	9m	6m	Wing	TF	E7	E2
On def. 6-0	17/25	5/8	2/3	3/6	5	1	2
On def. 5-1	10/15	4/7	0/2	2/2	2	2	0
Fastbreak	2/3				0	0	0

Defense by type

	Total	9m	6m	Wing	Stl.	C7	2m
Def. 6-0	23/36	1/3	10/14	6/8	3	4	1
Def. 4-2	1/1	0/0	0/0	1/1	0	0	0
Fastbreak	0/1				0	0	0

Attack with superiority / minority / goalkeeper out

	Attack				Reaction		
	Att.	Eff.	Shots	TF	FB	LD	Tot.
6 on 6	48	60%	29/41	7			
6 on 5	7	71%	5/7	0			
5 on 6	1	100%	1/1	0			

Player superiority / GK out counted at the end of attack (in case it changes during attack)

Defense with superiority / minority / goalkeeper out

	Attack				Reaction		
	Att.	Eff.	Shots	TF	FB	LD	Tot.
7 on 6 (GK out)	16	50%	8/13	3	0/0	4/4	4/4
6 on 6 (GK out)	2	100%	2/2	0	0/0	1/1	1/1
6 on 6	30	47%	14/23	7			
5 on 6	2	50%	1/1	1			
7 on 5 (GK out)	1	100%	1/1	0	0/0	0/0	0/0
6 on 5	1	100%	1/1	0			

Numbers show attacking numbers of opponent. Lower efficiency of opponent means better defense of this team

Jersey number Tot. Total shooting 6m 6m (line) shooting 9m 9m shooting Wng Wing shooting FB Fastbreak sh. 7m 7m penalty sh.
 Brk. Breakthrough sh. LD Long distance sh. As. Assists PC Pass clear chance E7 Earned 7m pen. TF Technical faults St. Steals
 2m 2m punishments C7. Committed 7m E2 Earned 2m pun. YC. Yellow cards R/B Red/Blue cards Blk. Blocks S Starting Line-up



23rd IHF Women's Junior (U20) World Championship

Slovenia (Celje and Laško)

Final Round, 9-10. place



Match Team Statistics

Match No. 98

Japan 35 - 27 Montenegro

(18 - 12) (17 - 15)

1.7.2022. 14:00

Attendance: 80

Arena Zlatorog

Referees: Alexei Covalciuc (MDA) / Igor Covalciuc (MDA)

Shot distribution by player

3 A. Otani [Grid]	4 S. Kakemoto [Grid]	5 S. Fukui [Grid]	6 M. Hamaguchi [Grid]	7 H. Fujiwara [Grid]	8 S. Yoshino [Grid]	9 Y. Masuzawa [Grid]
11 S. Ishikawa [Grid]	13 R. Higuchi [Grid]	14 H. Hatsumi [Grid]	15 Y. Ito [Grid]	17 A. Mizutani [Grid]	18 A. Oyama [Grid]	19 W. Hokaguchi [Grid]

TOTAL

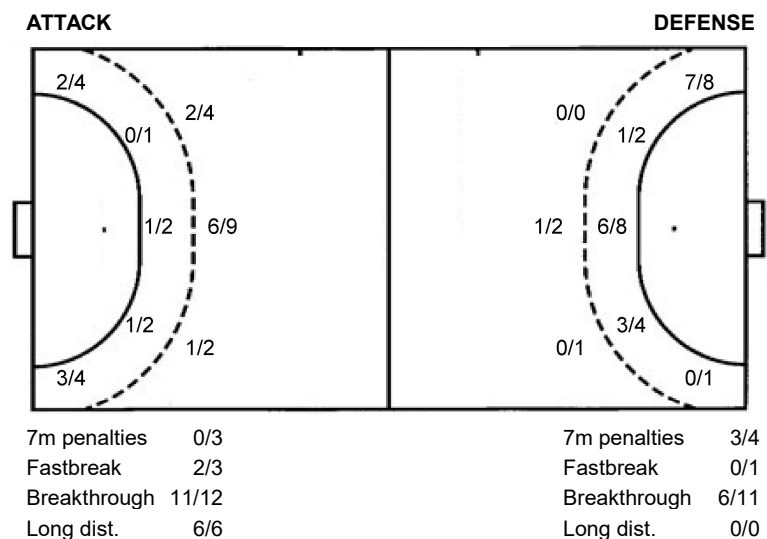
3/3	2/2	3/3
2/7		4/5
7/8	4/6	8/9

1 post 4 miss. 2 block 1/1 lob

Saves distribution goalkeepers

1 A. Kato [Grid]	16 R. Nakamura [Grid]	TOTAL [Grid]
----------------------------	---------------------------------	------------------------

Shots by position



Shooting statistics

Position	Goals	Sav.	Miss.	Post	Blk.	Total	%
Back (9m)	9	2	2	0	2	15	60
Line (6m)	2	2	0	1	0	5	40
Wing	5	3	0	0	0	8	63
7m penalties	0	2	1	0	0	3	0
Fastbreak	2	0	1	0	0	3	67
Breakthrough	11	1	0	0	0	12	92
Total	29	10	4	1	2	46	63

Jersey number Tot. Total shooting 6m 6m (line) shooting 9m 9m shooting Wng Wing shooting FB Fastbreak sh. 7m 7m penalty sh.
 Brk. Breakthrough sh. LD Long distance sh. As. Assists PC Pass clear chance E7 Earned 7m pen. TF Technical faults St. Steals
 2m 2m punishments C7. Committed 7m E2 Earned 2m pun. YC. Yellow cards R/B Red/Blue cards Blk. Blocks S Starting Line-up



23rd IHF Women's Junior (U20) World Championship

Slovenia (Celje and Laško)

Final Round, 9-10. place



Match Team Statistics

Match No. 98

Japan 35 - 27 Montenegro

(18 - 12) (17 - 15)

1.7.2022. 14:00

Attendance: 80

Arena Zlatorog

Referees: Alexei Covalciuc (MDA) / Igor Covalciuc (MDA)

Shot distribution by player

2 A. Marsenić	3 M. Andusic	4 M. Mehmedovic	5 G. Marsenić	6 A. Radovic	7 N. Kadović	9 S. Gugac
0/1 1/1 1/1	1/1	1/1 1/1 1 post	0/1 0/1 1/1 1/1	1/2 1/1 1/1 1/1	1/1 1/1 1/1 2/2	1/1 0/1
10 I. Durovic	11 S. Zecevic	13 A. Popovic	14 A. Krivokapic	15 B. Rackovic	16 V. Kovacevic	17 M. Novović
2/2	0/1	1/1 1/1 1/2	0/1 1/2 1/1 0/1 1/1	1 miss. 1/1		0/1

TOTAL

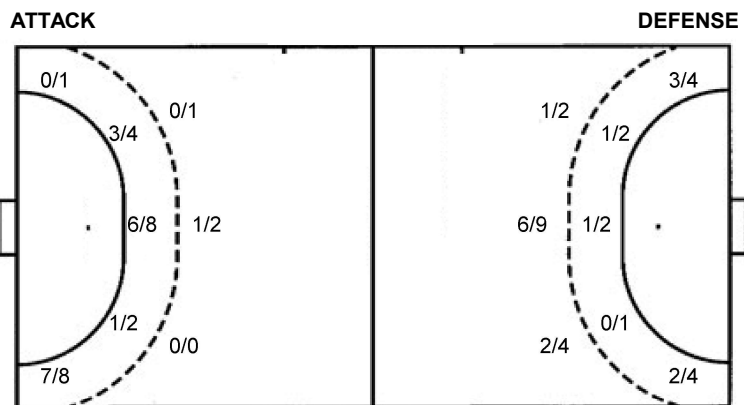
0/1	1/2	2/2
3/7	1/3	3/4
8/9	2/3	7/8

2 post 1 miss.

Saves distribution goalkeepers

1 J. Kadovic	12 M. Vujisic	16 V. Kovacevic	TOTAL
0/1 0/2 4/5 0/3 0/5 0/3 1/5	0/2 0/2 1/2 1/1 1/2 1/1 0/4	0/1 0/1 0/1 1/3	0/3 0/2 0/3 5/7 1/5 1/8 2/7 1/9

Shots by position



7m penalties 3/4
Fastbreak 0/1
Breakthrough 6/11
Long dist. 0/0

7m penalties 0/3
Fastbreak 2/3
Breakthrough 11/12
Long dist. 6/6

Shooting statistics

Position	Goals	Sav.	Miss.	Post	Blk.	Total	%
Back (9m)	1	2	0	0	0	3	33
Line (6m)	10	3	0	1	0	14	71
Wing	7	1	0	1	0	9	78
7m penalties	3	0	1	0	0	4	75
Fastbreak	0	1	0	0	0	1	0
Breakthrough	6	5	0	0	0	11	55
Total	27	12	1	2	0	42	64

Jersey number Tot. Total shooting 6m 6m (line) shooting 9m 9m shooting Wng Wing shooting FB Fastbreak sh. 7m 7m penalty sh.
Brk. Breakthrough sh. LD Long distance sh. As. Assists PC Pass clear chance E7 Earned 7m pen. TF Technical faults St. Steals
2m 2m punishments C7. Committed 7m E2 Earned 2m pun. YC. Yellow cards R/B Red/Blue cards Blk. Blocks S Starting Line-up

