



23rd IHF Women's Junior (U20) World Championship

Slovenia (Celje and Laško)

Final Round, Quarterfinals



Match Team Statistics

Match No. 89

Norway 37 - 20 Switzerland

(15 - 9) (22 - 11)

30.6.2022. 18:15

Attendance: 80

Arena Golovec

Referees: Eunha Lee (KOR) / Gaeul Lee (KOR)

Norway

#	Surname and name	S	Goals / shots							Attack					Def.			Penalties				TP					
			Tot.	%	9m	6m	Wing	7m	FB	Brk.	LD	As.	PC	E7	E2	TF	St.	C7	Blk	YC	2m		R	B			
1	UTNE Jenny Sofie Sundt																										0:42
2	AMUNDSEN Susanne Liberg		2/4	50				0/1			2/3																32:14
4	LOKEN Kaja		1/1	100		1/1											1	1									31:51
6	FREI Avril Mikkelsen		6/8	75	0/1			2/2			4/5			2	1	2	1	3		1				1			29:03
7	ANDERSEN Frida Brandbu	S	3/5	60				1/1			1/3	1/1		2	1			1		2							23:28
8	NYPAN Johanne Halseth		5/7	71	1/3			1/1			1/1	2/2						2		1							46:09
10	EGGEN Henriette Espetvedt		1/4	25	0/1	0/1					1/2							2			1	1					18:40
11	ANDERSEN Martine Karigstad	S	2/5	40	1/3						1/1	0/1		2		2		3									25:30
12	FOSSUM Johanna																										12:40
13	ROHNE Kaja	S	3/4	75		3/3						0/1											1				28:09
14	IVERSEN Charlotte Koffeid	S	4/4	100			2/2		2/2		2/2																39:28
15	GALD Maria Bergslien	S	6/6	100			2/2		3/3		1/1																27:40
18	VATNE Celina		0/3	0	0/3									1	1			2									16:21
20	SATEREN Maja Furu	S	2/5	40	0/1			0/1	0/1	2/2				2				1									23:03
21	MOSSESTAD Lina Waage		2/2	100						2/2				1						1							19:40
35	KROGH June Cecilie	S												2													45:22
	Team / bench																										
	UKUPNO		37/58	64	2/12	4/5	5/6	3/4	8/10	13/17	2/4			14	3	4	1	14	1	6	1	1	2	0	0		

#	Surname and name	Saves / shots								
		Tot.	%	9m	6m	Wing	7m	FB	Brk.	LD
1	UTNE Jenny Sofie Sundt	1/1	100				1/1			
12	FOSSUM Johanna	2/7	29	1/3	0/2	1/1	0/1			
35	KROGH June Cecilie	15/30	50	6/8	2/6	1/2	0/2	2/2	4/10	
	TOTAL	18/38	47	7/11	2/8	2/3	1/4	2/2	4/10	0/0

Coach: Tore Johannessen

Number of attacks: 66, Efficiency: 56%, Average Duration: 20.53 seconds

Attack by type of defense

	Shots	9m	6m	Wing	TF	E7	E2
On def. 6-0	24/39	2/11	4/5	5/6	14	4	1
On def. 5-1	0/1	0/1	0/0	0/0	0	0	0
Fastbreak	8/10				0	0	0

Defense by type

	Total	9m	6m	Wing	Stl.	C7	2m
Def. 6-0	17/41	4/17	6/9	1/4	1	6	2
Fastbreak	0/2				0	0	0

Attack with superiority / minority / goalkeeper out

	Attack				Reaction		
	Att.	Eff.	Shots	TF	FB	LD	Tot.
6 on 6 (GK out)	1	0%	0/1	0	0/0	0/0	0/0
6 on 6	60	55%	33/46	14			
6 on 5	2	100%	2/2	0			
5 on 6	3	67%	2/3	0			

Player superiority / GK out counted at the end of attack (in case it changes during attack)

Defense with superiority / minority / goalkeeper out

	Attack				Reaction		
	Att.	Eff.	Shots	TF	FB	LD	Tot.
7 on 6 (GK out)	19	42%	8/14	5	0/0	1/2	1/2
6 on 6 (GK out)	2	50%	1/1	1	0/0	0/0	0/0
6 on 6	41	27%	11/30	11			
7 on 5 (GK out)	1	0%	0/0	1	0/0	1/1	1/1
6 on 5	4	0%	0/2	2			

Numbers show attacking numbers of opponent. Lower efficiency of opponent means better defense of this team

Jersey number Tot. Total shooting 6m 6m (line) shooting 9m 9m shooting Wng Wing shooting FB Fastbreak sh. 7m 7m penalty sh.
 Brk. Breakthrough sh. LD Long distance sh. As. Assists PC Pass clear chance E7 Earned 7m pen. TF Technical faults St. Steals
 2m 2m punishments C7. Committed 7m E2 Earned 2m pun. YC. Yellow cards R/B Red/Blue cards Blk. Blocks S Starting Line-up



23rd IHF Women's Junior (U20) World Championship

Slovenia (Celje and Laško)

Final Round, Quarterfinals



Match Team Statistics

Match No. 89

Norway 37 - 20 Switzerland

(15 - 9) (22 - 11)

30.6.2022. 18:15

Attendance: 80

Arena Golovec

Referees: Eunha Lee (KOR) / Gaeul Lee (KOR)

Shot distribution by player

2 S. Amundsen

		0/1
	1/1	

1 miss. 1/1 lob

4 K. Loken

1/1		

6 A. Frei

		1/1
		1/1
3/4		1/1

1 post

7 F. Andersen

	1/1	
1/1		1/3

8 J. Nypan

2/2		2/2
		0/1
		1/1

1 post

10 H. Eggen

0/2		
1/1		

1 miss.

11 M. Andersen

0/1		1/1
1/1	0/1	0/1

13 K. Rohne

1/1		
1/1	1/1	

1 miss.

14 C. Iversen

1/1		
2/2		

1/1 lob

15 M. Gald

		3/3
	1/1	
		1/1

1/1 lob

18 C. Vatne

0/1		

2 miss.

20 M. Sateren

		0/1
2/2		0/1

1 block

21 L. Mossestad

		1/1
		1/1

TOTAL

4/5		8/9
1/4	2/3	1/4
11/12	2/2	5/8

2 post 5 miss. 1 block 3/3 lob

Saves distribution goalkeepers

1 J. Utne

		1/1

12 J. Fossum

0/1		
	1/1	
0/2	1/1	0/2

35 J. Krogh

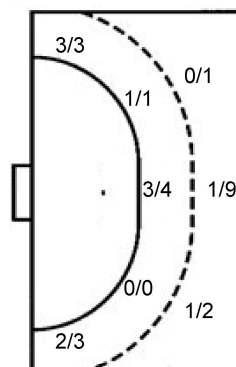
1/4		1/3
5/5	1/1	4/6
1/2	2/3	0/5

TOTAL

1/5		1/3
5/5	2/2	5/7
1/4	3/4	0/7

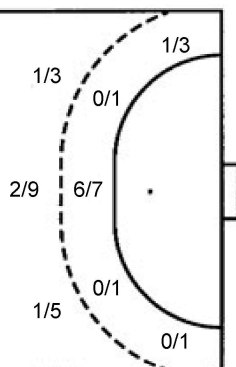
Shots by position

ATTACK



7m penalties 3/4
Fastbreak 8/10
Breakthrough 13/17
Long dist. 2/4

DEFENSE



7m penalties 3/6
Fastbreak 0/2
Breakthrough 6/11
Long dist. 0/0

Shooting statistics

Position	Goals	Sav.	Miss.	Post	Blk.	Total	%
Back (9m)	2	5	2	2	1	12	17
Line (6m)	4	1	0	0	0	5	80
Wing	5	1	0	0	0	6	83
7m penalties	3	1	0	0	0	4	75
Fastbreak	8	1	1	0	0	10	80
Breakthrough	13	3	1	0	0	17	76
Total	35	12	4	2	1	54	65

Jersey number Tot. Total shooting 6m 6m (line) shooting 9m 9m shooting Wng Wing shooting FB Fastbreak sh. 7m 7m penalty sh.
Brk. Breakthrough sh. LD Long distance sh. As. Assists PC Pass clear chance E7 Earned 7m pen. TF Technical faults St. Steals
2m 2m punishments C7. Committed 7m E2 Earned 2m pun. YC. Yellow cards R/B Red/Blue cards Blk. Blocks S Starting Line-up

Handball statistics and livescore by Toma-soft ltd (www.toma-soft.hr)



23rd IHF Women's Junior (U20) World Championship

Slovenia (Celje and Laško)

Final Round, Quarterfinals



Match Team Statistics

Match No. 89

Norway 37 - 20 Switzerland

(15 - 9) (22 - 11)

30.6.2022. 18:15

Attendance: 80

Arena Golovec

Referees: Eunha Lee (KOR) / Gaeul Lee (KOR)

Switzerland

Players		Goals / shots									Attack				Def.			Penalties				TP		
#	Surname and name	S	Tot.	%	9m	6m	Wing	7m	FB	Brk.	LD	As.	PC	E7	E2	TF	St.	C7	Blk	YC	2m		R	B
3	EMMENEGGER Ana	S	6/12	50	1/4			1/2		4/6						1		1						42:45
5	ERNI Kim		3/9	33	2/7			0/1		1/1			1			1								23:06
6	HESS Sina													1	1	5								23:20
7	SCHMID Tabea	S	3/4	75	1/1	2/3						1	1	1		2								37:44
8	BIERI Alena		0/1	0		0/1																		29:37
11	GWERDER Kyra	S	2/5	40		1/1	1/3			0/1						2								51:27
12	STREBEL Aline	S																						49:20
14	WOLFF Laurentia	S	3/6	50	0/2			2/3		1/1		2	2	1		4	1							41:30
17	COKER Clairebel	S	0/4	0	0/2					0/2				2		2	1	1						32:38
21	RUSERT Liv		1/3	33	0/1	1/2							1	1	1	2		1						16:24
25	AELLEN Leonie		2/3	67		2/2			0/1								1	1			1			33:37
35	TRUCHOT Louise	S	0/2	0			0/1		0/1							1								38:32
Team / bench																								
UKUPNO			20/49	41	4/17	6/9	1/4	3/6	0/2	6/11	0/0	3	5	6	2	20	2	4	1	0	1	0	0	0

Goalkeepers		Saves / shots								
#	Surname and name	Tot.	%	9m	6m	Wing	7m	FB	Brk.	LD
12	STREBEL Aline	13/48	27	5/7	1/5	1/6	1/4	1/9	3/16	1/1
TOTAL		13/48	27	5/7	1/5	1/6	1/4	3/9	3/16	1/1

Coach: Damian Gwerder

Number of attacks: 67, Efficiency: 30%, Average Duration: 33.48 seconds

Attack by type of defense

	Shots	9m	6m	Wing	TF	E7	E2
On def. 6-0	17/41	4/17	6/9	1/4	20	6	2
Fastbreak	0/2				0	0	0

Defense by type

	Total	9m	6m	Wing	Stl.	C7	2m
Def. 6-0	24/39	2/11	4/5	5/6	2	4	1
Def. 5-1	0/1	0/1	0/0	0/0	0	0	0
Fastbreak	8/10				0	0	0

Attack with superiority / minority / goalkeeper out

	Attack				Reaction		
	Att.	Eff.	Shots	TF	FB	LD	Tot.
7 on 6 (GK out)	19	42%	8/14	5	0/0	1/2	1/2
6 on 6 (GK out)	2	50%	1/1	1	0/0	0/0	0/0
6 on 6	41	27%	11/30	11			
7 on 5 (GK out)	1	0%	0/0	1	0/0	1/1	1/1
6 on 5	4	0%	0/2	2			

Player superiority / GK out counted at the end of attack (in case it changes during attack)

Defense with superiority / minority / goalkeeper out

	Attack				Reaction		
	Att.	Eff.	Shots	TF	FB	LD	Tot.
6 on 6 (GK out)	1	0%	0/1	0	0/0	0/0	0/0
6 on 6	60	55%	33/46	14			
6 on 5	2	100%	2/2	0			
5 on 6	3	67%	2/3	0			

Numbers show attacking numbers of opponent. Lower efficiency of opponent means better defense of this team

Jersey number Tot. Total shooting 6m 6m (line) shooting 9m 9m shooting Wng Wing shooting FB Fastbreak sh. 7m 7m penalty sh.
 Brk. Breakthrough sh. LD Long distance sh. As. Assists PC Pass clear chance E7 Earned 7m pen. TF Technical faults St. Steals
 2m 2m punishments C7. Committed 7m E2 Earned 2m pun. YC. Yellow cards R/B Red/Blue cards Blk. Blocks S Starting Line-up



23rd IHF Women's Junior (U20) World Championship

Slovenia (Celje and Laško)

Final Round, Quarterfinals



Match Team Statistics

Match No. 89

Norway 37 - 20 Switzerland

(15 - 9) (22 - 11)

30.6.2022. 18:15

Attendance: 80

Arena Golovec

Referees: Eunha Lee (KOR) / Gaeul Lee (KOR)

Shot distribution by player

3 A. Emmenegger

1/1		
		1/4
1/1	0/1	2/2

1 miss. 1 block 1/1 lob

5 K. Erni

1/1		1/1
	0/1	
		1/1

5 miss.

6 S. Hess

7 T. Schmid

		1/1
0/1		
		2/2

8 A. Bieri

1 miss.

11 K. Gwerder

1/1		
0/1		1/1
0/1		

1 post

14 L. Wolff

1/1		
	0/1	0/1
1/1		1/1

1 post

17 C. Coker

0/1		0/1
0/1		
	0/1	

21 L. Rusert

0/1		
1/1		

1 post

25 L. Aellen

		0/1
	1/1	1/1

35 L. Truchot

0/1		
	0/1	

TOTAL

4/5		2/3
0/5	0/2	2/7
3/4	1/4	7/7

3 post 7 miss. 1 block 1/1 lob

Saves distribution goalkeepers

12 A. Strebel

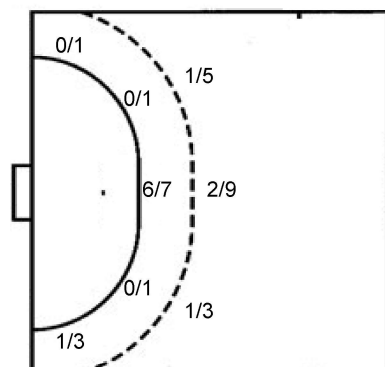
1/5		1/9
3/4	1/3	3/4
1/12	0/2	3/8

TOTAL

1/5		1/9
3/4	1/3	3/4
1/12	0/2	3/8

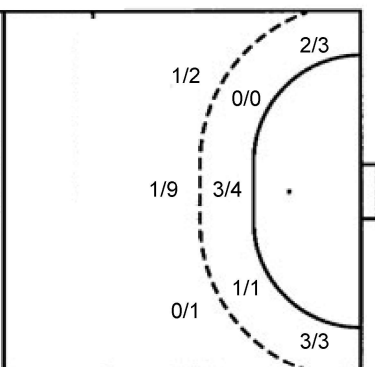
Shots by position

ATTACK



7m penalties 3/6
Fastbreak 0/2
Breakthrough 6/11
Long dist. 0/0

DEFENSE



7m penalties 3/4
Fastbreak 8/10
Breakthrough 13/17
Long dist. 2/4

Shooting statistics

Position	Goals	Sav.	Miss.	Post	Blk.	Total	%
Back (9m)	4	7	4	1	1	17	24
Line (6m)	6	2	1	0	0	9	67
Wing	1	2	0	1	0	4	25
7m penalties	3	1	1	1	0	6	50
Fastbreak	0	2	0	0	0	2	0
Breakthrough	6	4	1	0	0	11	55
Total	20	18	7	3	1	49	41

Jersey number Tot. Total shooting 6m 6m (line) shooting 9m 9m shooting Wng Wing shooting FB Fastbreak sh. 7m 7m penalty sh.
Brk. Breakthrough sh. LD Long distance sh. As. Assists PC Pass clear chance E7 Earned 7m pen. TF Technical faults St. Steals
2m 2m punishments C7. Committed 7m E2 Earned 2m pun. YC. Yellow cards R/B Red/Blue cards Blk. Blocks S Starting Line-up

Handball statistics and livescore by Toma-soft ltd (www.toma-soft.hr)

