



23rd IHF Women's Junior (U20) World Championship

Slovenia (Celje and Laško)

Final Round, 9-12. place



Match Team Statistics

Match No. 82

Japan 32 - 30 Czech Republic

(17 - 15) (11 - 13) (SO: 4 - 2)

30.6.2022. 14:00

Attendance: 50

Arena Zlatorog

Referees: Vesna Balvan (BIH) / Tatjana Prastalo (BIH)

Japan

| # | Surname and name | S | Goals / shots | | | | | | | | | Attack | | | | | Def. | | | Penalties | | | TP | | | | |
|----|------------------|---|---------------|-----|------|-----|------|-----|-----|------|-----|--------|----|----|----|----|------|----|-----|-----------|----|---|----|---|--|-------|--|
| | | | Tot. | % | 9m | 6m | Wing | 7m | FB | Brk. | LD | As. | PC | E7 | E2 | TF | St. | C7 | Blk | YC | 2m | R | | B | | | |
| 3 | OTANI Ayano | | 1/1 | 100 | | 1/1 | | | | | | | | | | | | | | | | | | | | 0:31 | |
| 4 | KAKEMOTO Shino | | | | | | | | | | | | | | | | | | | | | | | | | 7:04 | |
| 5 | FUKUI Sumire | | 2/3 | 67 | 1/2 | | | 1/1 | | | | | | | | | 1 | | | | | | | | | 14:19 | |
| 6 | HAMAGUCHI Mao | | | | | | | | | | | | | | | | | | | | | | | | | 0:34 | |
| 7 | FUJIWARA Hinata | S | 5/8 | 63 | 3/5 | | | | | 2/3 | | 2 | 2 | 2 | 1 | 1 | | | | | | | 1 | | | 57:22 | |
| 8 | YOSHINO Sanju | S | 5/9 | 56 | | | 2/6 | 1/1 | 1/1 | | | | | | | | | 2 | | | | | | | | 47:59 | |
| 9 | MASUZAWA Yuna | S | 3/5 | 60 | | 1/1 | 2/3 | | 0/1 | | | | | | | 1 | | | | | | | | | | 37:47 | |
| 11 | ISHIKAWA Sora | | 4/11 | 36 | 1/6 | | | 1/2 | | 2/3 | | 5 | 2 | | | 1 | 1 | | | | | | 1 | | | 39:24 | |
| 13 | HIGUCHI Reona | S | 4/5 | 80 | 0/1 | 1/1 | | 1/1 | 1/1 | 1/1 | | 3 | 2 | | 1 | 3 | | | | | | | | | | 43:24 | |
| 14 | HATSUMI Hanako | S | 0/1 | 0 | | 0/1 | | | | | | | | | | | | | | | | | | | | 45:08 | |
| 15 | ITO Yui | S | 2/4 | 50 | 0/1 | 2/3 | | | | | | | | | | 1 | | 1 | | | | | 1 | | | 29:29 | |
| 16 | NAKAMURA Rino | S | | | | | | | | | | | | | | 1 | | | | | | | | | | 56:20 | |
| 17 | MIZUTANI Akari | | 4/5 | 80 | 0/1 | | | 2/2 | | 2/2 | | | | 1 | 2 | | | | | | | | | | | 19:14 | |
| 18 | OYAMA Akane | | 0/1 | 0 | | 0/1 | | | | | | | | | | | | | | | | | | | | 5:15 | |
| 19 | HOKAGUCHI Wakana | | 2/2 | 100 | | | | | | 2/2 | | | | | | | | | | | | | | 1 | | 13:45 | |
| 20 | HIGA Kaede | | | | | | | | | | | | | | | | | | | | | | | | | 2:25 | |
| | Team / bench | | | | | | | | | | | | | | | | | | | | | | | | | | |
| | UKUPNO | | 32/55 | 58 | 5/16 | 5/7 | 4/10 | 6/7 | 2/3 | 9/11 | 1/1 | 10 | 6 | 3 | 4 | 8 | 4 | 1 | 0 | 0 | 0 | 4 | 0 | 0 | | | |

| # | Surname and name | Saves / shots | | | | | | | | |
|----|------------------|---------------|----|-----|-----|------|-----|-----|------|-----|
| | | Tot. | % | 9m | 6m | Wing | 7m | FB | Brk. | LD |
| 16 | NAKAMURA Rino | 10/37 | 27 | 3/7 | 0/3 | 1/7 | 2/5 | 0/1 | 4/14 | |
| 20 | HIGA Kaede | 0/3 | 0 | 0/1 | | | | 0/1 | 0/1 | |
| | TOTAL | 10/40 | 25 | 3/8 | 0/3 | 1/7 | 2/5 | 0/2 | 4/15 | 0/0 |

Coach: Shota Arai

Number of attacks: 62, Efficiency: 52%, Average Duration: 33.66 seconds

Attack by type of defense

| | Shots | 9m | 6m | Wing | TF | E7 | E2 |
|-------------|-------|------|-----|------|----|----|----|
| On def. 6-0 | 21/40 | 5/15 | 4/6 | 4/10 | 7 | 3 | 4 |
| On def. 5-1 | 2/4 | 0/1 | 1/1 | 0/0 | 1 | 0 | 0 |
| Fastbreak | 2/3 | | | | 0 | 0 | 0 |

Defense by type

| | Total | 9m | 6m | Wing | Stl. | C7 | 2m |
|------------|-------|-----|-----|------|------|----|----|
| Def. 6-0 | 10/17 | 2/5 | 1/2 | 3/5 | 3 | 1 | 1 |
| Def. 4-2 | 2/3 | 0/0 | 1/1 | 1/1 | 0 | 0 | 0 |
| Def. 3-2-1 | 13/24 | 3/4 | 1/2 | 2/6 | 1 | 0 | 3 |
| Fastbreak | 2/2 | | | | 0 | 0 | 0 |

Attack with superiority / minority / goalkeeper out

| | Attack | | | | Reaction | | |
|-----------------|--------|------|-------|----|----------|-----|------|
| | Att. | Eff. | Shots | TF | FB | LD | Tot. |
| 7 on 6 (GK out) | 1 | 100% | 1/1 | 0 | 0/0 | 0/0 | 0/0 |
| 6 on 6 (GK out) | 2 | 50% | 1/2 | 0 | 0/0 | 0/0 | 0/0 |
| 6 on 6 | 44 | 45% | 20/37 | 7 | | | |
| 6 on 5 | 8 | 50% | 4/7 | 1 | | | |
| 5 on 6 | 7 | 86% | 6/7 | 0 | | | |

Player superiority / GK out counted at the end of attack (in case it changes during attack)

Defense with superiority / minority / goalkeeper out

| | Attack | | | | Reaction | | |
|-----------------|--------|------|-------|----|----------|-----|------|
| | Att. | Eff. | Shots | TF | FB | LD | Tot. |
| 6 on 6 (GK out) | 3 | 100% | 3/3 | 0 | 0/0 | 0/0 | 0/0 |
| 6 on 6 | 46 | 50% | 23/38 | 8 | | | |
| 5 on 6 | 2 | 0% | 0/0 | 2 | | | |
| 6 on 5 | 10 | 40% | 4/9 | 1 | | | |

Numbers show attacking numbers of opponent. Lower efficiency of opponent means better defense of this team

Jersey number Tot. Total shooting 6m 6m (line) shooting 9m 9m shooting Wng Wing shooting FB Fastbreak sh. 7m 7m penalty sh.
 Brk. Breakthrough sh. LD Long distance sh. As. Assists PC Pass clear chance E7 Earned 7m pen. TF Technical faults St. Steals
 2m 2m punishments C7. Committed 7m E2 Earned 2m pun. YC. Yellow cards R/B Red/Blue cards Blk. Blocks S Starting Line-up



23rd IHF Women's Junior (U20) World Championship

Slovenia (Celje and Laško)

Final Round, 9-12. place



Match Team Statistics

Match No. 82

Japan 32 - 30 Czech Republic

(17 - 15) (11 - 13) (SO: 4 - 2)

30.6.2022. 14:00

Attendance: 50

Arena Zlatorog

Referees: Vesna Balvan (BIH) / Tatjana Prastalo (BIH)

Shot distribution by player

| | | | | | | |
|---|--|-------------------------------------|------------------------------------|---|--|--|
| 3 A. Otani 1/1 | 4 S. Kakemoto | 5 S. Fukui 2/2 1 miss. | 6 M. Hamaguchi | 7 H. Fujiwara 1/1 2/2 0/1 1/1 1/1 1 post 1 block | 8 S. Yoshino 1/1 1/2 0/1 1/1 1/1 0/1 1 post 1/1 lob | 9 Y. Masuzawa 2/2 1/2 1 miss. |
| 11 S. Ishikawa 1/1 1/2 1/2 0/1 1 post 1 miss. 1 block | 13 R. Higuchi 1/1 2/2 0/1 1/1 | 14 H. Hatsumi 1 post | 15 Y. Ito 0/1 2/2 0/1 | 17 A. Mizutani 1/1 3/3 1 miss. | 18 A. Oyama 0/1 | 19 W. Hokaguchi 1/1 1/1 |

TOTAL

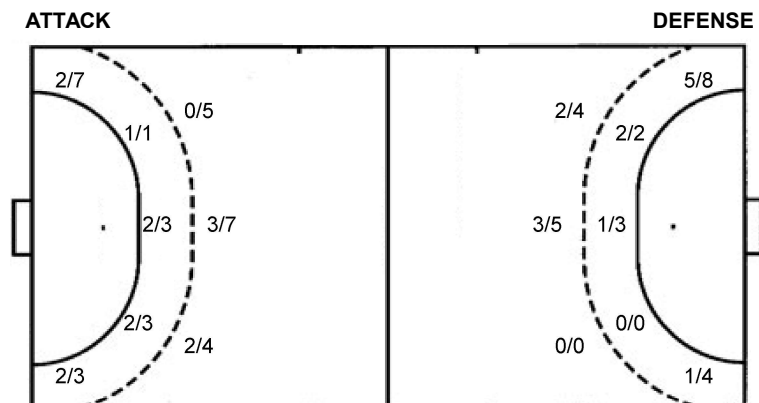
| | | |
|-----|-----|------|
| 3/3 | 1/1 | 4/5 |
| 4/7 | 0/2 | 5/5 |
| 5/7 | 1/4 | 8/10 |

4 post 4 miss. 2 block 1/1 lob

Saves distribution goalkeepers

| | | |
|--|-------------------------------------|--|
| 16 R. Nakamura 1/4 0/3 0/2 3/6 2/2 3/8 0/1 0/1 1/9 | 20 K. Higa 0/1 0/1 0/1 | TOTAL 1/4 0/3 0/2 3/7 2/2 3/8 0/2 0/1 1/10 |
|--|-------------------------------------|--|

Shots by position



7m penalties 6/7
Fastbreak 2/3
Breakthrough 9/11
Long dist. 1/1

7m penalties 3/5
Fastbreak 2/2
Breakthrough 11/18
Long dist. 0/0

Shooting statistics

| Position | Goals | Sav. | Miss. | Post | Blk. | Total | % |
|--------------|-----------|-----------|----------|----------|----------|-----------|-----------|
| Back (9m) | 5 | 5 | 3 | 1 | 2 | 16 | 31 |
| Line (6m) | 5 | 1 | 0 | 1 | 0 | 7 | 71 |
| Wing | 4 | 5 | 0 | 1 | 0 | 10 | 40 |
| 7m penalties | 6 | 1 | 0 | 0 | 0 | 7 | 86 |
| Fastbreak | 2 | 0 | 1 | 0 | 0 | 3 | 67 |
| Breakthrough | 9 | 1 | 0 | 1 | 0 | 11 | 82 |
| Total | 31 | 13 | 4 | 4 | 2 | 54 | 57 |

Jersey number Tot. Total shooting 6m 6m (line) shooting 9m 9m shooting Wng Wing shooting FB Fastbreak sh. 7m 7m penalty sh.
Brk. Breakthrough sh. LD Long distance sh. As. Assists PC Pass clear chance E7 Earned 7m pen. TF Technical faults St. Steals
2m 2m punishments C7. Committed 7m E2 Earned 2m pun. YC. Yellow cards R/B Red/Blue cards Blk. Blocks S Starting Line-up



23rd IHF Women's Junior (U20) World Championship

Slovenia (Celje and Laško)

Final Round, 9-12. place



Match Team Statistics

Match No. 82

Japan 32 - 30 Czech Republic

(17 - 15) (11 - 13) (SO: 4 - 2)

30.6.2022. 14:00

Attendance: 50

Arena Zlatorog

Referees: Vesna Balvan (BIH) / Tatjana Prastalo (BIH)

Shot distribution by player

2 K. Kōnigová

| | | |
|--|--|-----|
| | | |
| | | |
| | | 1/1 |

1 post

3 N. Melicharová

| | | |
|--|--|--|
| | | |
| | | |
| | | |

1 post

4 M. Daňková

| | | |
|-----|--|--|
| 1/1 | | |
| 0/2 | | |
| | | |

5 A. Farářová

| | | |
|--|--|--|
| | | |
| | | |
| | | |

6 N. Kuxová

| | | |
|-----|--|-----|
| 0/1 | | |
| 1/1 | | 2/2 |
| 1/1 | | 3/3 |

9 T. Vostárková

| | | |
|--|--|-----|
| | | |
| | | 0/1 |
| | | |

11 D. Holeňáková

| | | |
|--|--|-----|
| | | 1/1 |
| | | 0/1 |
| | | 1/1 |

13 L. Drozdová

| | | |
|--|--|-----|
| | | |
| | | 1/1 |
| | | |

1 post

14 B. Kroftová

| | | |
|--|-----|--|
| | 1/1 | |
| | 0/1 | |
| | | |

1 miss.

18 K. Kubálková

| | | |
|-----|-----|-----|
| 1/1 | 2/2 | |
| 1/1 | | 1/1 |
| | | |

2 post 1/1 lob

19 P. Lásková

| | | |
|--|--|-----|
| | | |
| | | |
| | | 1/1 |

21 C. Cholevová

| | | |
|-----|-----|-----|
| 1/1 | | 1/1 |
| 2/3 | 0/1 | 1/1 |
| 1/1 | 1/1 | 3/3 |

1 post 3 miss.

24 M. Macháčová

| | | |
|--|--|--|
| | | |
| | | |
| | | |

25 M. Smějová

| | | |
|--|--|-----|
| | | |
| | | 0/1 |
| | | 0/1 |

1 miss.

TOTAL

| | | |
|-----|-----|------|
| 3/4 | 3/3 | 2/2 |
| 4/7 | 0/2 | 5/8 |
| 2/2 | 1/1 | 9/10 |

6 post 5 miss. 1/1 lob

Saves distribution goalkeepers

1 A. Srpová

| | | |
|-----|-----|-----|
| 0/2 | 0/1 | 1/3 |
| 2/5 | 1/1 | 0/4 |
| 2/4 | 2/3 | 2/9 |

16 Š. Spurná

| | | |
|-----|-----|-----|
| 0/1 | | 0/2 |
| 1/2 | 1/1 | 0/1 |
| 0/3 | 1/1 | 0/1 |

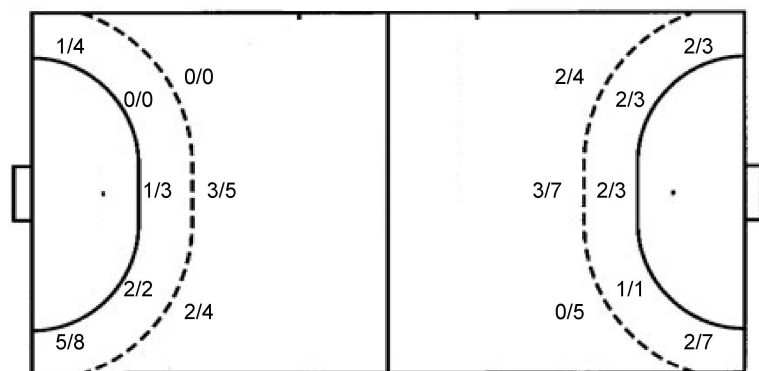
TOTAL

| | | |
|-----|-----|------|
| 0/3 | 0/1 | 1/5 |
| 3/7 | 2/2 | 0/5 |
| 2/7 | 3/4 | 2/10 |

Shots by position

ATTACK

DEFENSE



7m penalties 3/5
Fastbreak 2/2
Breakthrough 11/18
Long dist. 0/0

7m penalties 6/7
Fastbreak 2/3
Breakthrough 9/11
Long dist. 1/1

Shooting statistics

| Position | Goals | Sav. | Miss. | Post | Blk. | Total | % |
|--------------|-------|------|-------|------|------|-------|-----|
| Back (9m) | 5 | 3 | 1 | 0 | 0 | 9 | 56 |
| Line (6m) | 3 | 0 | 0 | 2 | 0 | 5 | 60 |
| Wing | 6 | 1 | 2 | 3 | 0 | 12 | 50 |
| 7m penalties | 3 | 2 | 0 | 0 | 0 | 5 | 60 |
| Fastbreak | 2 | 0 | 0 | 0 | 0 | 2 | 100 |
| Breakthrough | 11 | 4 | 2 | 1 | 0 | 18 | 61 |
| Total | 30 | 10 | 5 | 6 | 0 | 51 | 59 |

Jersey number Tot. Total shooting 6m 6m (line) shooting 9m 9m shooting Wng Wing shooting FB Fastbreak sh. 7m 7m penalty sh.
Brk. Breakthrough sh. LD Long distance sh. As. Assists PC Pass clear chance E7 Earned 7m pen. TF Technical faults St. Steals
2m 2m punishments C7. Committed 7m E2 Earned 2m pun. YC. Yellow cards R/B Red/Blue cards Blk. Blocks S Starting Line-up

Handball statistics and livescore by Toma-soft ltd (www.toma-soft.hr)

