



# 23rd IHF Women's Junior (U20) World Championship

Slovenia (Celje and Laško)

President's Cup III, 1. round



Match Team Statistics

Match No. 78

## Lithuania 38 - 22 Mexico

(24 - 10) (14 - 12)

28.6.2022. 16:30

Attendance: 50

Arena Tri Lilije

Referees: Bruna Correa (BRA) / Renata Correa (BRA)

### Lithuania

#	Surname and name	S	Goals / shots								Attack				Def.			Penalties				TP						
			Tot.	%	9m	6m	Wing	7m	FB	Brk.	LD	As.	PC	E7	E2	TF	St.	C7	Blk	YC	2m		R	B				
1	MARKOVAITE Justina														2													17:27
4	ANDRONIK Dominyka	S	6/8	75				3/4			3/3	0/1				1			1	1								22:03
5	BALEZENTYTE Ausra																	1	1									26:14
7	STANELYTE Kamile		3/3	100				1/1			2/2						1	1	2									30:21
9	MACKONYTE Silvija	S	3/3	100	1/1			1/1			1/1					1			1									13:08
11	KULIKOVAITE Singrida	S	0/3	0	0/1										2	1			1	1	2							17:56
12	GECAITE Skirmante	S													5				3									28:43
15	VALANCIUTE Monika	S	0/1	0		0/1									1				2									33:18
18	VOSKRESENSKAJA Mante	S	5/5	100							5/5				1				3									34:23
21	BERNACKAITE Goda	S	2/3	67				0/1	2/2						1	1	1		1									23:52
23	DAMULEVICIUTE Vakare		4/10	40	4/9										2				2	2	1							44:04
24	KAIRYTE Gerda		0/1	0	0/1																							
25	PILIKAUSKAITE Gabija		5/6	83	2/3				1/1	2/2							1	1	1	1		1						33:32
33	CIBIRAITTE Urte														1													13:50
34	GUDLINKYTE Agne		6/7	86				2/3			3/3	1/1				1												30:55
37	KLOVAITE Samanta		4/7	57	2/5						1/1	1/1			1	1			6		1							50:14
Team / bench																												
UKUPNO			38/57	67	9/20	0/1	7/10	3/3	17/17	2/6	0/0	16	6	3	3	22	6	4	4	0	0	0	0	0	0	0	0	0

#	Surname and name	Saves / shots								
		Tot.	%	9m	6m	Wing	7m	FB	Brk.	LD
1	MARKOVAITE Justina	0/8	0			0/3	0/2		0/3	
12	GECAITE Skirmante	15/22	68	5/8	1/2	7/9	0/1	1/1	1/1	
33	CIBIRAITTE Urte	1/8	13	0/3		0/1		0/2	1/2	
TOTAL		16/38	42	5/11	1/2	7/13	0/3	1/3	2/6	0/0

Coach: Ala Senvaitiene

Number of attacks: 77, Efficiency: 49%, Average Duration: 19.71 seconds

### Attack by type of defense

	Shots	9m	6m	Wing	TF	E7	E2
On def. 6-0	18/37	9/20	0/1	7/10	22	3	3
Fastbreak	17/17				0	0	0

### Defense by type

	Total	9m	6m	Wing	Stl.	C7	2m
Def. 6-0	17/41	6/19	1/3	6/13	6	4	0
Fastbreak	2/4				0	0	0

### Attack with superiority / minority / goalkeeper out

	Attack				Reaction		
	Att.	Eff.	Shots	TF	FB	LD	Tot.
6 on 6	67	46%	31/48	19			
6 on 5	10	70%	7/7	3			

Player superiority / GK out counted at the end of attack (in case it changes during attack)

### Defense with superiority / minority / goalkeeper out

	Attack				Reaction		
	Att.	Eff.	Shots	TF	FB	LD	Tot.
7 on 6 (GK out)	38	29%	11/23	15	7/7	0/0	7/7
6 on 6 (GK out)	7	43%	3/4	3	2/2	0/0	2/2
6 on 6	32	25%	8/17	15			

Numbers show attacking numbers of opponent. Lower efficiency of opponent means better defense of this team

# Jersey number Tot. Total shooting 6m 6m (line) shooting 9m 9m shooting Wng Wing shooting FB Fastbreak sh. 7m 7m penalty sh.  
 Brk. Breakthrough sh. LD Long distance sh. As. Assists PC Pass clear chance E7 Earned 7m pen. TF Technical faults St. Steals  
 2m 2m punishments C7. Committed 7m E2 Earned 2m pun. YC. Yellow cards R/B Red/Blue cards Blk. Blocks S Starting Line-up

Handball statistics and livescore by Toma-soft ltd (www.toma-soft.hr)



# 23rd IHF Women's Junior (U20) World Championship

## Slovenia (Celje and Laško)

### President's Cup III, 1. round



#### Match Team Statistics

Match No. 78

## Lithuania 38 - 22 Mexico

(24 - 10) (14 - 12)

28.6.2022. 16:30

Attendance: 50

Arena Tri Lilije

Referees: Bruna Correa (BRA) / Renata Correa (BRA)

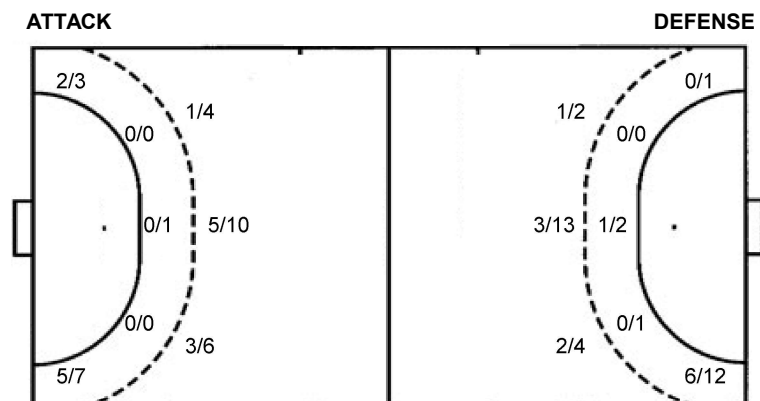
#### Shot distribution by player

<b>4 D. Andronik</b> 1 miss. 1/1 1/2 3/3	<b>5 A. Balezentyte</b>	<b>7 K. Stanelyte</b> 1/1 lob 1/1	<b>9 S. Mackonyte</b> 3/3	<b>11 S. Kulikovaite</b> 1 miss. 0/1 0/1	<b>15 M. Valanciute</b> 0/1	<b>18 M. Voskresenskaja</b> 2/2 3/3
<b>21 G. Bernackaite</b> 1/1 0/1 1/1	<b>23 V. Damuleviciute</b> 3 post 1/1 1/2 1/2 1/2	<b>24 G. Kairyte</b> 1 post	<b>25 G. Pilikauskaite</b> 1/1 0/1 2/2	<b>34 A. Gudlinkyte</b> 1 miss. 2/2 1/1 3/3	<b>37 S. Klovaite</b> 1 post 1 miss. 2/2 0/1 1/1 1/1	<b>TOTAL</b> 6 post 3 miss. 1/1 lob 3/3 2/3 8/10 0/2 3/5 10/11 1/3 10/10

#### Saves distribution goalkeepers

<b>1 J. Markovaite</b> 0/1 0/1 0/1 0/2 0/1 0/2	<b>12 S. Gecaite</b> 1/2 1/1 1/1 1/1 3/3 2/2 3/7 2/2 1/3	<b>33 U. Cibiraite</b> 1/2 0/1 0/2 0/2 0/1	<b>TOTAL</b> 1/3 1/2 2/4 1/4 3/3 2/4 3/10 2/2 1/6
---	---	---	--

#### Shots by position



7m penalties 3/3  
Fastbreak 17/17  
Breakthrough 2/6  
Long dist. 0/0

7m penalties 3/4  
Fastbreak 2/4  
Breakthrough 4/6  
Long dist. 0/0

#### Shooting statistics

Position	Goals	Sav.	Miss.	Post	Blk.	Total	%
Back (9m)	9	5	1	5	0	20	45
Line (6m)	0	1	0	0	0	1	0
Wing	7	1	2	0	0	10	70
7m penalties	3	0	0	0	0	3	100
Fastbreak	17	0	0	0	0	17	100
Breakthrough	2	3	0	1	0	6	33
<b>Total</b>	<b>38</b>	<b>10</b>	<b>3</b>	<b>6</b>	<b>0</b>	<b>57</b>	<b>67</b>

# Jersey number Tot. Total shooting 6m 6m (line) shooting 9m 9m shooting Wng Wing shooting FB Fastbreak sh. 7m 7m penalty sh.  
Brk. Breakthrough sh. LD Long distance sh. As. Assists PC Pass clear chance E7 Earned 7m pen. TF Technical faults St. Steals  
2m 2m punishments C7. Committed 7m E2 Earned 2m pun. YC. Yellow cards R/B Red/Blue cards Blk. Blocks S Starting Line-up

Handball statistics and livescore by Toma-soft ltd (www.toma-soft.hr)



# 23rd IHF Women's Junior (U20) World Championship

Slovenia (Celje and Laško)

President's Cup III, 1. round



Match Team Statistics

Match No. 78

## Lithuania 38 - 22 Mexico

(24 - 10) (14 - 12)

28.6.2022. 16:30

Attendance: 50

Arena Tri Lilije

Referees: Bruna Correa (BRA) / Renata Correa (BRA)

### Mexico

#	Surname and name	S	Goals / shots								Attack				Def.			Penalties				TP			
			Tot.	%	9m	6m	Wing	7m	FB	Brk.	LD	As.	PC	E7	E2	TF	St.	C7	Blk	YC	2m		R	B	
2	OROZCO LOPEZ Itzel		3/7	43	0/4		1/1	2/2						1										37:50	
4	ANTUNES RIVERA Montserrat		3/5	60	1/1				0/1	2/3				4		1							1	30:42	
5	VERDUGO VEJAR Jenifer	S	8/17	47	4/9	0/1	2/3	1/2		1/2				3				5	1	1				48:26	
6	GOVEA RAMON Brenda Estefania	S	0/3	0	0/3										1				1					13:31	
7	LEIJA MARQUEZ Nicole Alejandra		1/3	33	0/1		0/1				1/1			1	3	1		2	1					15:50	
8	IBARRA SALAZAR Fabiola	S	1/3	33			1/3								1			1		1			2	30:54	
10	SANCHEZ GARCIA Andrea Mariana	S	2/4	50			0/1		2/3					1				3	1					58:38	
11	GARCIA MALDONADO Andrea																	1						4:47	
12	GONZALEZ ALAMEDA Nataly	S											1	2				1						44:08	
13	ALCALA LUNA Karen Melissa	S																1						35:47	
16	PASTRANA ALMAGUER Andrea Carolina		4/5	80	1/1	1/1	2/3						1					4						26:06	
24	VENANCIO RAMOS Karewit Alexandra																							12:52	
26	FERNANDEZ HIDALGO Perla	S																3		1				40:14	
97	VIRGEN LEZAMA Valeria		0/2	0		0/1	0/1											1					1	20:15	
Team / bench																									
UKUPNO			22/49	45	6/19	1/3	6/13	3/4	2/4	4/6	0/0			8	9	4	0	33	4	3	0	0	4	0	0

#	Surname and name	Saves / shots								
		Tot.	%	9m	6m	Wing	7m	FB	Brk.	LD
12	GONZALEZ ALAMEDA Nataly	10/35	29	5/12	1/1	1/7	0/2	0/9	3/4	
24	VENANCIO RAMOS Karewit Alexandra	0/13	0	0/2		0/1	0/1	0/8	0/1	
TOTAL		10/48	21	5/14	1/1	1/8	0/3	1/17	3/5	0/0

Coach: Adriana Garcia Castillo

Number of attacks: 77, Efficiency: 29%, Average Duration: 27.04 seconds

### Attack by type of defense

	Shots	9m	6m	Wing	TF	E7	E2
On def. 6-0	17/41	6/19	1/3	6/13	33	4	0
Fastbreak	2/4				0	0	0

### Defense by type

	Total	9m	6m	Wing	Stl.	C7	2m
Def. 6-0	18/37	9/20	0/1	7/10	4	3	4
Fastbreak	17/17				0	0	0

### Attack with superiority / minority / goalkeeper out

	Attack				Reaction		
	Att.	Eff.	Shots	TF	FB	LD	Tot.
7 on 6 (GK out)	38	29%	11/23	15	7/7	0/0	7/7
6 on 6 (GK out)	7	43%	3/4	3	2/2	0/0	2/2
6 on 6	32	25%	8/17	15			

Player superiority / GK out counted at the end of attack (in case it changes during attack)

### Defense with superiority / minority / goalkeeper out

	Attack				Reaction		
	Att.	Eff.	Shots	TF	FB	LD	Tot.
6 on 6	67	46%	31/48	19			
6 on 5	10	70%	7/7	3			

Numbers show attacking numbers of opponent. Lower efficiency of opponent means better defense of this team

# Jersey number Tot. Total shooting 6m 6m (line) shooting 9m 9m shooting Wng Wing shooting FB Fastbreak sh. 7m 7m penalty sh.  
 Brk. Breakthrough sh. LD Long distance sh. As. Assists PC Pass clear chance E7 Earned 7m pen. TF Technical faults St. Steals  
 2m 2m punishments C7. Committed 7m E2 Earned 2m pun. YC. Yellow cards R/B Red/Blue cards Blk. Blocks S Starting Line-up



# 23rd IHF Women's Junior (U20) World Championship

## Slovenia (Celje and Laško)

### President's Cup III, 1. round



#### Match Team Statistics

Match No. 78

## Lithuania 38 - 22 Mexico

(24 - 10) (14 - 12)

28.6.2022. 16:30

Attendance: 50

Arena Tri Lilije

Referees: Bruna Correa (BRA) / Renata Correa (BRA)

#### Shot distribution by player

##### 2 I. Orozco Lopez

1/1	1/1	1/2
	0/1	

1 miss. 1 block

##### 4 M. Antunes Rivera

		0/1
1/1		1/1
		1/1

1 miss.

##### 5 J. Verdugo Vejar

1/1		
1/2	0/1	0/1
2/2		4/5

2 post 2 miss. 1 block

##### 6 B. Govea Ramon

0/1		

1 miss. 1 block

##### 7 N. Leija Marquez

1/2		

1 block

##### 8 F. Ibarra Salazar

1/2	0/1	

##### 10 A. Sanchez Garcia

		1/1
1/1	0/1	
0/1		

##### 11 A. Garcia Maldonado


##### 13 K. Alcalá Luna


##### 16 A. Pastrana Almaguer

		1/1
3/3	0/1	

##### 26 P. Fernandez Hidalgo


##### 97 V. Virgen Lezama

	0/1	
		0/1

##### TOTAL

2/3	1/2	2/4
3/4	0/3	2/4
7/10	0/2	5/6

2 post 5 miss. 4 block

#### Saves distribution goalkeepers

##### 12 N. Gonzalez Alameda

0/3		1/3
2/6	2/2	2/4
1/7	2/2	0/8

##### 24 K. Venancio Ramos

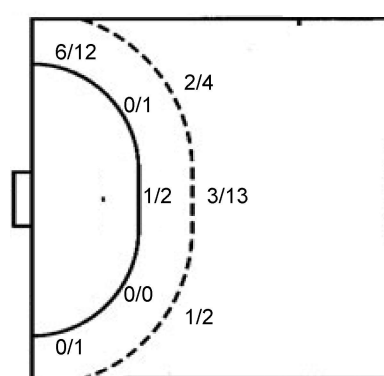
0/4		0/1
0/4	0/1	0/2

##### TOTAL

0/3		1/3
2/10	2/2	2/5
1/11	2/3	0/10

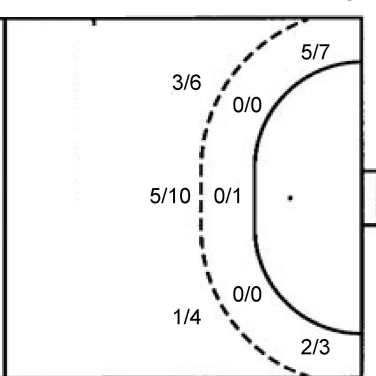
#### Shots by position

##### ATTACK



7m penalties 3/4  
Fastbreak 2/4  
Breakthrough 4/6  
Long dist. 0/0

##### DEFENSE



7m penalties 3/3  
Fastbreak 17/17  
Breakthrough 2/6  
Long dist. 0/0

#### Shooting statistics

Position	Goals	Sav.	Miss.	Post	Blk.	Total	%
Back (9m)	6	5	4	1	3	19	32
Line (6m)	1	1	0	0	1	3	33
Wing	6	7	0	0	0	13	46
7m penalties	3	0	0	1	0	4	75
Fastbreak	2	1	1	0	0	4	50
Breakthrough	4	2	0	0	0	6	67
<b>Total</b>	<b>22</b>	<b>16</b>	<b>5</b>	<b>2</b>	<b>4</b>	<b>49</b>	<b>45</b>

# Jersey number Tot. Total shooting 6m 6m (line) shooting 9m 9m shooting Wng Wing shooting FB Fastbreak sh. 7m 7m penalty sh.  
Brk. Breakthrough sh. LD Long distance sh. As. Assists PC Pass clear chance E7 Earned 7m pen. TF Technical faults St. Steals  
2m 2m punishments C7. Committed 7m E2 Earned 2m pun. YC. Yellow cards R/B Red/Blue cards Blk. Blocks S Starting Line-up

Handball statistics and livescore by Toma-soft ltd (www.toma-soft.hr)

