



23rd IHF Women's Junior (U20) World Championship

Slovenia (Celje and Laško)

Main Round II, 2. round



Match Team Statistics

Match No. 68

Denmark 19 - 19 France

(11 - 11) (8 - 8)

28.6.2022. 14:30

Attendance: 85

Arena Golovec

Referees: Marko Sekulic (SRB) / Vladimir Jovandic (SRB)

Shot distribution by player

3 M. Wierzba

1/2		1/1
0/2	0/1	
0/1		0/1

1 post 2 miss. 1 block

5 F. Nielsen

		1/1
		0/1

1 post 1 miss.

6 T. Rasmussen

0/1		
1/3		1/1

2 miss.

7 A. Ebler

1/1	0/1	1/1
		1/2

1 post 1 miss. 1 block

9 M. Laursen

2 post

10 C. Skott

1/1		1/1
		3/3

1 miss.

11 J. Lilholt

13 K. Damgaard

15 K. Poulsen

17 L. Johannsen

		1/1
		0/1
		1/1

1/2 lob

19 A. Hansen

		1/1
2/2		

23 T. Frandsen

26 K. Jacobsen

1 miss.

TOTAL

3/5	0/1	6/6
0/2	0/1	1/4
3/6		5/6

5 post 8 miss. 2 block 1/2 lob

Saves distribution goalkeepers

1 M. Romer

12 E. Firgaard

20 A. Bossen

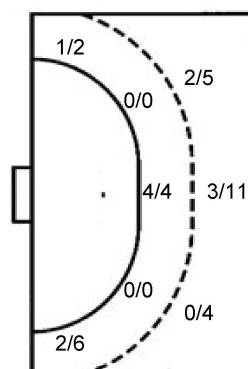
2/3		1/4
6/7	2/3	2/2
0/6	2/3	1/6

TOTAL

2/3		1/4
6/7	2/3	2/2
0/6	2/3	1/6

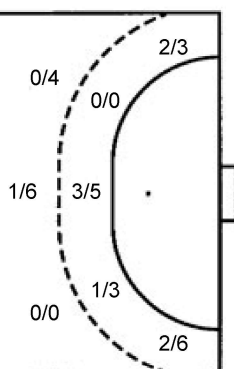
Shots by position

ATTACK



7m penalties 3/5
Fastbreak 1/1
Breakthrough 3/10
Long dist. 0/0

DEFENSE



7m penalties 2/2
Fastbreak 1/2
Breakthrough 6/12
Long dist. 1/1

Shooting statistics

Position	Goals	Sav.	Miss.	Post	Blk.	Total	%
Back (9m)	5	5	7	1	2	20	25
Line (6m)	4	0	0	0	0	4	100
Wing	3	2	1	2	0	8	38
7m penalties	3	1	0	1	0	5	60
Fastbreak	1	0	0	0	0	1	100
Breakthrough	3	6	0	1	0	10	30
Total	19	14	8	5	2	48	40

Jersey number Tot. Total shooting 6m 6m (line) shooting 9m 9m shooting Wng Wing shooting FB Fastbreak sh. 7m 7m penalty sh.
Brk. Breakthrough sh. LD Long distance sh. As. Assists PC Pass clear chance E7 Earned 7m pen. TF Technical faults St. Steals
2m 2m punishments C7. Committed 7m E2 Earned 2m pun. YC. Yellow cards R/B Red/Blue cards Blk. Blocks S Starting Line-up

Handball statistics and livescore by Toma-soft ltd (www.toma-soft.hr)



23rd IHF Women's Junior (U20) World Championship

Slovenia (Celje and Laško)

Main Round II, 2. round



Match Team Statistics

Match No. 68

Denmark 19 - 19 France

(11 - 11) (8 - 8)

28.6.2022. 14:30

Attendance: 85

Arena Golovec

Referees: Marko Sekulic (SRB) / Vladimir Jovandic (SRB)

France

#	Surname and name	S	Goals / shots								Attack					Def.			Penalties			TP				
			Tot.	%	9m	6m	Wing	7m	FB	Brk.	LD	As.	PC	E7	E2	TF	St.	C7	Blk	YC	2m		R	B		
4	DELAYE Siobann		2/5	40			2/4				0/1						1									36:10
5	FRACHON Albane	S	0/2	0			0/1				0/1						1									10:23
6	GRANDVEAU Lena	S	3/8	38	0/3						2/4	1/1	4	3	1	1	2		1							51:59
8	MLAMALI Zaliata		1/1	100			1/1																			32:47
9	TSHIMANGA Kiara	S	3/3	100			1/1		1/1	1/1			1		1		1	1								33:07
10	MODENEL Lucie	S	2/4	50	1/2						1/2		1	1			3									15:54
12	HALTER Melanie																									15:45
14	CHAMBONNIER Cassidy		1/3	33	0/1			1/1		0/1																4:33
15	STEMMER Iona		1/1	100				1/1																		1:16
16	KABEYA TSHISOLA Jemima	S																								44:15
17	KANOUTE Coura	S	1/5	20	0/4					1/1			1			2	2					1				53:41
18	ARDOUIN Naemi		0/1	0			0/1									2										10:29
20	GAYET Maureen		0/2	0			0/1		0/1																	13:10
21	FAUVARQUE Laura		1/1	100						1/1																35:34
22	MATHON Helena															1	1					1				14:43
23	BOUKTIT Sarah	S	4/8	50		4/8										2			2							46:14
	Team / bench																									
	UKUPNO		19/44	43	1/10	4/8	4/9	2/2	1/2	6/12	1/1		7	4	2	1	13	2	5	2	0	3	0	0		

#	Surname and name	Saves / shots								
		Tot.	%	9m	6m	Wing	7m	FB	Brk.	LD
12	HALTER Melanie	4/9	44	1/3	0/2	1/1	0/1		2/2	
16	KABEYA TSHISOLA Jemima	10/24	42	4/7	0/2	1/4	1/3	0/1	4/7	
	TOTAL	14/33	42	5/10	0/4	2/5	1/4	0/1	6/9	0/0

Coach: Eric Baradat

Number of attacks: 55, Efficiency: 35%, Average Duration: 27.93 seconds

Attack by type of defense

	Shots	9m	6m	Wing	TF	E7	E2
On def. 6-0	15/39	1/10	4/8	4/9	13	2	1
Fastbreak	1/2				0	0	0

Defense by type

	Total	9m	6m	Wing	Stl.	C7	2m
Def. 6-0	15/42	5/20	4/4	3/8	2	5	3
Fastbreak	1/1				0	0	0

Attack with superiority / minority / goalkeeper out

	Attack				Reaction		
	Att.	Eff.	Shots	TF	FB	LD	Tot.
6 on 6	47	36%	17/39	8			
5 on 6	6	17%	1/2	4			
6 on 5	2	50%	1/1	1			

Player superiority / GK out counted at the end of attack (in case it changes during attack)

Defense with superiority / minority / goalkeeper out

	Attack				Reaction		
	Att.	Eff.	Shots	TF	FB	LD	Tot.
6 on 6 (GK out)	1	0%	0/1	0	0/0	0/0	0/0
6 on 6	47	32%	15/38	9			
6 on 5	7	43%	3/7	0			
5 on 6	1	100%	1/1	0			

Numbers show attacking numbers of opponent. Lower efficiency of opponent means better defense of this team

Jersey number Tot. Total shooting 6m 6m (line) shooting 9m 9m shooting Wng Wing shooting FB Fastbreak sh. 7m 7m penalty sh.
 Brk. Breakthrough sh. LD Long distance sh. As. Assists PC Pass clear chance E7 Earned 7m pen. TF Technical faults St. Steals
 2m 2m punishments C7. Committed 7m E2 Earned 2m pun. YC. Yellow cards R/B Red/Blue cards Blk. Blocks S Starting Line-up



23rd IHF Women's Junior (U20) World Championship

Slovenia (Celje and Laško)

Main Round II, 2. round



Match Team Statistics

Match No. 68

Denmark 19 - 19 France

(11 - 11) (8 - 8)

28.6.2022. 14:30

Attendance: 85

Arena Golovec

Referees: Marko Sekulic (SRB) / Vladimir Jovandic (SRB)

Shot distribution by player

4 S. Delaye 1 post 1 miss. 1/1 lob 1/1 0/1	5 A. Frachon 0/1 0/1	6 L. Grandveau 1 post 2 miss. 0/1 1/1 0/1 1/1	8 Z. Mlamali 1/1	9 K. Tshimanga 1/1 2/2	10 L. Modenel 0/2 1/1 1/1	14 C. Chambonnier 1 miss. 1/1 0/1
15 I. Stemmer 1/1	17 C. Kanoute 0/1 0/1 1/1	18 N. Ardouin 0/1	20 M. Gayet 1 post 0/1	21 L. Fauvarque 1/1	22 H. Mathon	23 S. Boukhit 2 post 1/3 2/2 1/1

TOTAL

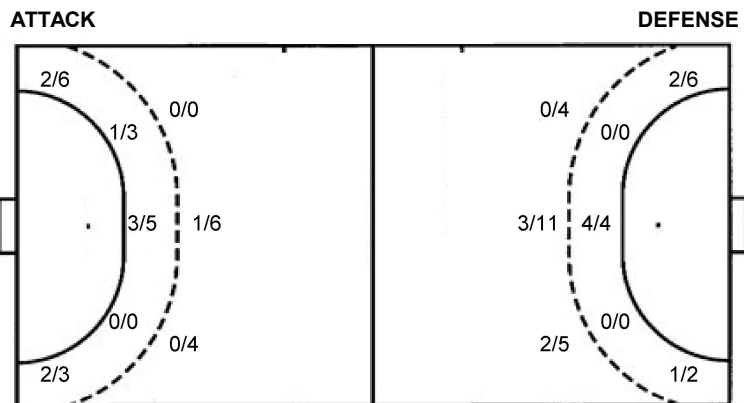
1/3		3/4
1/7	1/3	0/2
6/6	1/3	5/6

5 post 4 miss. 1/1 lob

Saves distribution goalkeepers

12 M. Halter 1/2 0/1 1/2 2/4	16 J. Kabeya Tshisola 1/3 1/1 0/5 2/2 1/1 2/2 1/2 1/6	TOTAL 2/5 1/1 0/6 2/2 1/1 3/4 3/6 1/6
--	---	---

Shots by position



7m penalties	2/2	7m penalties	3/5
Fastbreak	1/2	Fastbreak	1/1
Breakthrough	6/12	Breakthrough	3/10
Long dist.	1/1	Long dist.	0/0

Shooting statistics

Position	Goals	Sav.	Miss.	Post	Blk.	Total	%
Back (9m)	1	7	2	0	0	10	10
Line (6m)	4	2	0	2	0	8	50
Wing	4	4	0	1	0	9	44
7m penalties	2	0	0	0	0	2	100
Fastbreak	1	0	0	1	0	2	50
Breakthrough	6	3	2	1	0	12	50
Total	18	16	4	5	0	43	42

Jersey number Tot. Total shooting 6m 6m (line) shooting 9m 9m shooting Wng Wing shooting FB Fastbreak sh. 7m 7m penalty sh.
 Brk. Breakthrough sh. LD Long distance sh. As. Assists PC Pass clear chance E7 Earned 7m pen. TF Technical faults St. Steals
 2m 2m punishments C7. Committed 7m E2 Earned 2m pun. YC. Yellow cards R/B Red/Blue cards Blk. Blocks S Starting Line-up

