



23rd IHF Women's Junior (U20) World Championship

Slovenia (Celje and Laško)

Main Round I, 2. round



Match Team Statistics

Match No. 66

Netherlands 23 - 22 Sweden

(10 - 12) (13 - 10)

28.6.2022. 14:30

Attendance: 120

Arena Zlatorog

Referees: Alexei Covalciuc (MDA) / Igor Covalciuc (MDA)

Netherlands

#	Surname and name	S	Goals / shots								Attack					Def.			Penalties			TP				
			Tot.	%	9m	6m	Wing	7m	FB	Brk.	LD	As.	PC	E7	E2	TF	St.	C7	Blk	YC	2m		R	B		
1	VAN GALEN Senna																									
2	SCHANSSEMA Bianca	S																								56:42
6	STEVERINK Romé	S	0/1	0			0/1																			17:25
7	LOY Jalisha		0/1	0	0/1																					21:39
9	DALEMAN Roos	S	5/10	50			4/9		1/1																	59:27
10	VAN DE RUIT Jessie	S	1/2	50	1/2																					19:57
14	VAN INGEN Jette		2/2	100																						9:50
15	VERBRAEKEN Amber		2/3	67			1/2		1/1																	42:35
16	VLUG Lisa		1/2	50	1/2																					4:17
17	MOLENAAR Kim	S	6/12	50	3/8	1/1			2/3																	45:41
18	BOETERS Fem		0/1	0		0/1																				19:18
20	KUIPERS Lynn	S	1/1	100																						48:30
21	MAARSCHALKERWEERD Britt																									
22	WOLFS Pipy	S	2/3	67		2/3																				47:09
23	VAN VLIET Lois		3/3	100					3/3																	1:08
32	VAN DER HELM Judith		0/1	0					0/1																	26:22
Team / bench																										
UKUPNO			23/42	55	5/13	3/5	5/12	5/6	2/3	3/3	0/0	6	3	6	3	16	4	6	1	2	2	0	0			

#	Surname and name	Saves / shots								
		Tot.	%	9m	6m	Wing	7m	FB	Brk.	LD
1	VAN GALEN Senna									
2	SCHANSSEMA Bianca	13/35	37	7/12	1/1	4/7	1/4	0/3	0/8	
TOTAL		13/35	37	7/12	1/1	4/7	1/4	0/3	0/8	0/0

Coach: Ricardo Clarijs

Number of attacks: 56, Efficiency: 41%, Average Duration: 30.00 seconds

Attack by type of defense

	Shots	9m	6m	Wing	TF	E7	E2
On def. 6-0	16/32	5/13	3/4	5/12	15	6	3
On def. press.	0/1	0/0	0/1	0/0	1	0	0
Fastbreak	2/3				0	0	0

Defense by type

	Total	9m	6m	Wing	Stl.	C7	2m
Def. 6-0	1/1	0/0	0/0	0/0	0	0	0
Def. 5-1	15/32	5/15	0/2	3/8	4	6	2
Fastbreak	3/3				0	0	0

Attack with superiority / minority / goalkeeper out

	Attack				Reaction		
	Att.	Eff.	Shots	TF	FB	LD	Tot.
7 on 6 (GK out)	2	0%	0/0	2	0/0	0/1	0/1
6 on 6 (GK out)	1	0%	0/0	1	0/0	0/0	0/0
6 on 6	44	41%	18/33	11			
6 on 5	7	57%	4/5	2			
5 on 6	2	50%	1/2	0			

Player superiority / GK out counted at the end of attack (in case it changes during attack)

Defense with superiority / minority / goalkeeper out

	Attack				Reaction		
	Att.	Eff.	Shots	TF	FB	LD	Tot.
7 on 6 (GK out)	3	67%	2/3	0	0/0	0/0	0/0
6 on 6	42	40%	17/32	10			
5 on 6	4	50%	2/4	0			
6 on 5	4	25%	1/4	0			

Numbers show attacking numbers of opponent. Lower efficiency of opponent means better defense of this team

Jersey number Tot. Total shooting 6m 6m (line) shooting 9m 9m shooting Wng Wing shooting FB Fastbreak sh. 7m 7m penalty sh.
 Brk. Breakthrough sh. LD Long distance sh. As. Assists PC Pass clear chance E7 Earned 7m pen. TF Technical faults St. Steals
 2m 2m punishments C7. Committed 7m E2 Earned 2m pun. YC. Yellow cards R/B Red/Blue cards Blk. Blocks S Starting Line-up

Handball statistics and livescore by Toma-soft ltd (www.toma-soft.hr)



23rd IHF Women's Junior (U20) World Championship

Slovenia (Celje and Laško)

Main Round I, 2. round



Match Team Statistics

Match No. 66

Netherlands 23 - 22 Sweden

(10 - 12) (13 - 10)

28.6.2022. 14:30

Attendance: 120

Arena Zlatorog

Referees: Alexei Covalciuc (MDA) / Igor Covalciuc (MDA)

Shot distribution by player

6 R. Steverink

1 miss.

7 J. Loy

0/1		

9 R. Daleman

1/1		3/3
0/1		
1/2		

2 miss. 0/1 lob

10 J. Van De Ruit

		1/1

1 miss.

14 J. Van Ingen

		1/1
		1/1

15 A. Verbraeken

	1/1	
	1/1	

1 miss.

16 L. Vlug

		1/1

1 miss.

17 K. Molenaar

1/1	1/1	
1/3	0/2	1/1
2/2		

2 post

18 F. Boeters

		0/1

20 L. Kuipers

1/1		

21 B. Maarschalkerweerd

22 P. Wolfs

1/1		
	1/1	

1 post

23 L. Van Vliet

1/1		
		2/2

32 J. Van Der Helm

		0/1

TOTAL

4/4	2/2	4/4
2/5	0/2	2/4
3/5	2/2	4/4

3 post 6 miss. 0/1 lob

Saves distribution goalkeepers

1 S. Van Galen

2 B. Schanssema

2/8		0/4
4/5	3/3	2/7
0/2	2/4	0/2

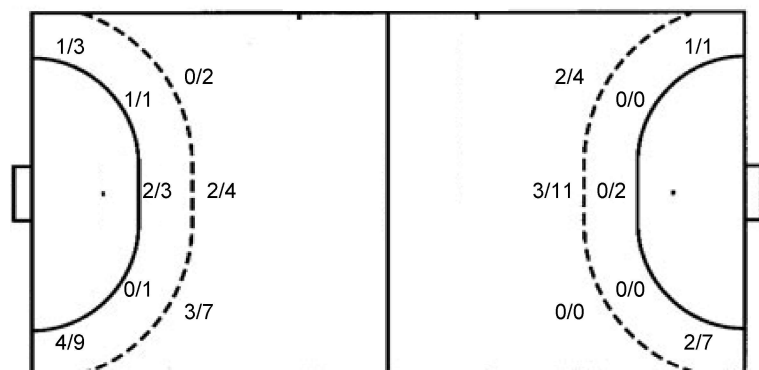
TOTAL

2/8		0/4
4/5	3/3	2/7
0/2	2/4	0/2

Shots by position

ATTACK

DEFENSE



7m penalties 5/6
 Fastbreak 2/3
 Breakthrough 3/3
 Long dist. 0/0

7m penalties 3/7
 Fastbreak 3/3
 Breakthrough 8/8
 Long dist. 0/1

Shooting statistics

Position	Goals	Sav.	Miss.	Post	Blk.	Total	%
Back (9m)	5	4	2	2	0	13	38
Line (6m)	3	1	0	1	0	5	60
Wing	5	3	4	0	0	12	42
7m penalties	5	1	0	0	0	6	83
Fastbreak	2	1	0	0	0	3	67
Breakthrough	3	0	0	0	0	3	100
Total	23	10	6	3	0	42	55

Jersey number Tot. Total shooting 6m 6m (line) shooting 9m 9m shooting Wng Wing shooting FB Fastbreak sh. 7m 7m penalty sh.
 Brk. Breakthrough sh. LD Long distance sh. As. Assists PC Pass clear chance E7 Earned 7m pen. TF Technical faults St. Steals
 2m 2m punishments C7. Committed 7m E2 Earned 2m pun. YC. Yellow cards R/B Red/Blue cards Blk. Blocks S Starting Line-up

Handball statistics and livescore by Toma-soft ltd (www.toma-soft.hr)



23rd IHF Women's Junior (U20) World Championship

Slovenia (Celje and Laško)

Main Round I, 2. round



Match Team Statistics

Match No. 66

Netherlands 23 - 22 Sweden

(10 - 12) (13 - 10)

28.6.2022. 14:30

Attendance: 120

Arena Zlatorog

Referees: Alexei Covalciuc (MDA) / Igor Covalciuc (MDA)

Sweden

#	Surname and name	S	Goals / shots								Attack					Def.			Penalties			TP		
			Tot.	%	9m	6m	Wing	7m	FB	Brk.	LD	As.	PC	E7	E2	TF	St.	C7	Blk	YC	2m		R	B
1	SCHJÖTT Tyra	S																						46:07
2	LEISSNER Elin																							0:03
3	JOHANSSON Jennifer	S	1/2	50			1/1	0/1									1							60:00
4	ÖSTBLOM Johanna		0/1	0			0/1																	11:14
5	PETERSSON BERGSTEN Clara	S	1/4	25			1/4									1								48:46
6	SHOAI HALLBERG Ofelia		0/1	0		0/1										1			1					36:13
7	BLOMST Thea	S	1/2	50		0/1				1/1						1			1			2		49:10
8	AXNER Tyra	S	8/14	57	3/7			3/5			2/2				2	3			1	3				49:38
9	MUMBONGO Charité	S	3/5	60	0/2						3/3				1	1			2	1	1			43:21
10	WEDENBY Hanna	S																						6:15
11	AKESSON Elin																							
12	ASESKOG Agnes																							
13	NUHANOVIC Emma		5/9	56	1/4			0/1	2/2	2/2				2	3	1	1	1						19:25
14	LINDBERG BLOHM Kajsa		3/5	60	1/2		1/1				1/1	0/1		1		2			1	1			2	34:23
15	HEIKKA Elin		0/1	0			0/1													1				6:20
16	POPAJA Hanna																							9:05
	Team / bench																						1	
	UKUPNO		22/44	50	5/15	0/2	3/8	3/7	3/3	8/8	0/1			5	7	7	2	10	3	6	0	1	4	0

#	Surname and name	Saves / shots								
		Tot.	%	9m	6m	Wing	7m	FB	Brk.	LD
1	SCHJÖTT Tyra	8/27	30	3/7	0/3	3/7	1/4	1/3	0/3	
12	ASESKOG Agnes									
16	POPAJA Hanna	2/6	33	1/2	1/1	0/1	0/2			
	TOTAL	10/33	30	4/9	1/4	3/8	1/6	1/3	0/3	0/0

Coach: Jesper Östlund

Number of attacks: 53, Efficiency: 42%, Average Duration: 35.73 seconds

Attack by type of defense

	Shots	9m	6m	Wing	TF	E7	E2
On def. 6-0	1/1	0/0	0/0	0/0	0	0	0
On def. 5-1	15/32	5/15	0/2	3/8	10	7	2
Fastbreak	3/3				0	0	0

Defense by type

	Total	9m	6m	Wing	Stl.	C7	2m
Def. 6-0	16/32	5/13	3/4	5/12	2	6	4
Def. press.	0/1	0/0	0/1	0/0	1	0	0
Fastbreak	2/3				0	0	0

Attack with superiority / minority / goalkeeper out

	Attack				Reaction		
	Att.	Eff.	Shots	TF	FB	LD	Tot.
7 on 6 (GK out)	3	67%	2/3	0	0/0	0/0	0/0
6 on 6	42	40%	17/32	10			
5 on 6	4	50%	2/4	0			
6 on 5	4	25%	1/4	0			

Player superiority / GK out counted at the end of attack (in case it changes during attack)

Defense with superiority / minority / goalkeeper out

	Attack				Reaction		
	Att.	Eff.	Shots	TF	FB	LD	Tot.
7 on 6 (GK out)	2	0%	0/0	2	0/0	0/1	0/1
6 on 6 (GK out)	1	0%	0/0	1	0/0	0/0	0/0
6 on 6	44	41%	18/33	11			
6 on 5	7	57%	4/5	2			
5 on 6	2	50%	1/2	0			

Numbers show attacking numbers of opponent. Lower efficiency of opponent means better defense of this team

Jersey number Tot. Total shooting 6m 6m (line) shooting 9m 9m shooting Wng Wing shooting FB Fastbreak sh. 7m 7m penalty sh.
 Brk. Breakthrough sh. LD Long distance sh. As. Assists PC Pass clear chance E7 Earned 7m pen. TF Technical faults St. Steals
 2m 2m punishments C7. Committed 7m E2 Earned 2m pun. YC. Yellow cards R/B Red/Blue cards Blk. Blocks S Starting Line-up



23rd IHF Women's Junior (U20) World Championship

Slovenia (Celje and Laško)

Main Round I, 2. round



Match Team Statistics

Match No. 66

Netherlands 23 - 22 Sweden

(10 - 12) (13 - 10)

28.6.2022. 14:30

Attendance: 120

Arena Zlatorog

Referees: Alexei Covalciuc (MDA) / Igor Covalciuc (MDA)

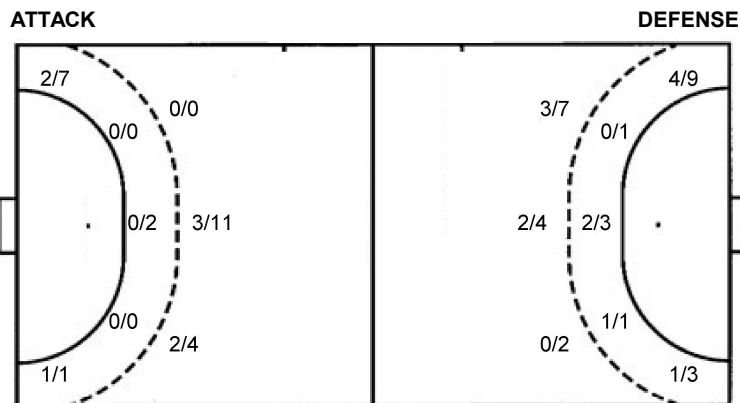
Shot distribution by player

2 E. Leissner 1 miss.	3 J. Johansson 1 miss.	4 J. Östblom 0/1	5 C. Petersson Bergsten 1 miss. 1/1 0/1 0/1	6 O. Shoai Hallberg 0/1	7 T. Blomst 1 post 1/1	8 T. Axné 1 post 2 miss. 2/3 1/1 0/1 2/2 1/1 0/1
9 C. Mumbongo 1 miss. 1/1 0/1 1/1 1/1	10 H. Wedenby	11 E. Akesson	13 E. Nuhanovic 1 miss. 2/2 0/1 0/1 2/2 0/1 1/1	14 K. Lindberg Blohm 1 miss. 1/1 0/1 2/2	15 E. Heikka 0/1	TOTAL 2 post 7 miss. 6/8 1/5 0/3 5/7 2/2 2/4 2/2

Saves distribution goalkeepers

1 T. Schjött 0/4 0/1 0/4 3/5 2/2 1/3 1/3 0/2 0/2	12 A. Aleskog	16 H. Popaja 0/1 1/1 1/2 0/2	TOTAL 0/4 0/2 0/4 3/5 2/2 2/4 2/5 0/2 0/4
--	----------------------	--	---

Shots by position



7m penalties 3/7
Fastbreak 3/3
Breakthrough 8/8
Long dist. 0/1

7m penalties 5/6
Fastbreak 2/3
Breakthrough 3/3
Long dist. 0/0

Shooting statistics

Position	Goals	Sav.	Miss.	Post	Blk.	Total	%
Back (9m)	5	7	3	0	0	15	33
Line (6m)	0	1	0	1	0	2	0
Wing	3	4	1	0	0	8	38
7m penalties	3	1	2	1	0	7	43
Fastbreak	3	0	0	0	0	3	100
Breakthrough	8	0	0	0	0	8	100
Total	22	13	6	2	0	43	51

Jersey number Tot. Total shooting 6m 6m (line) shooting 9m 9m shooting Wng Wing shooting FB Fastbreak sh. 7m 7m penalty sh.
Brk. Breakthrough sh. LD Long distance sh. As. Assists PC Pass clear chance E7 Earned 7m pen. TF Technical faults St. Steals
2m 2m punishments C7. Committed 7m E2 Earned 2m pun. YC. Yellow cards R/B Red/Blue cards Blk. Blocks S Starting Line-up

Handball statistics and livescore by Toma-soft ltd (www.toma-soft.hr)

