



23rd IHF Women's Junior (U20) World Championship

Slovenia (Celje and Laško)

Main Round II, 1. round



Match Team Statistics

Match No. 55

Denmark 32 - 35 Norway

(16 - 18) (16 - 17)

26.6.2022. 18:30

Attendance: 100

Arena Golovec

Referees: Amar Konjicanin (BIH) / Dino Konjicanin (BIH)

Denmark

#	Surname and name	S	Goals / shots									Attack				Def.			Penalties				TP				
			Tot.	%	9m	6m	Wing	7m	FB	Brk.	LD	As.	PC	E7	E2	TF	St.	C7	Blk	YC	2m	R		B			
1	ROMER Mathilde Berner														2												41:56
3	WIERSBA Maria Berger	S	8/11	73	2/5				2/2					4/4	2	2	1	4		1					1		47:37
5	NIELSEN Frida Hogaard		8/10	80	5/7									3/3	1	1		1									35:01
6	RASMUSSEN Thea Hamann	S	8/15	53	0/4				2/3					6/8	2	2	1	1		1							55:04
7	EBLER Alberte	S	1/4	25	1/3									0/1				2		1							25:00
9	LAURSEN Maja Munch	S	3/3	100			2/2		1/1																		60:00
10	SKOTT Clara	S	3/3	100			2/2		1/1																		59:49
11	LILHOLT Julie Sondergaard																	1									9:27
12	FIRGAARD Emilie Holst																										0:23
13	DAMGAARD Katrine Brolos																			1							19:05
15	POULSEN Karen Klokke	S																									11:57
17	JOHANNSSEN Lin																										
19	HANSEN Amanda Loft		1/1	100		1/1											2	1									28:58
20	BOSSSEN Anne Christina Amdisen	S															1										16:18
23	FRANSEN Thilde Harregaard																										9:25
26	JACOBSEN Katrine																										
	Team / bench																										
	UKUPNO		32/47	68	8/19	1/1	4/4	4/5	2/2	13/16	0/0				7	0	5	2	13	1	3	2	0	1	0	0	

#	Surname and name	Saves / shots								
		Tot.	%	9m	6m	Wing	7m	FB	Brk.	LD
1	ROMER Mathilde Berner	14/38	37	8/11	2/12	2/3	0/1	1/4	1/7	
12	FIRGAARD Emilie Holst	3/7	43		2/3		0/1		1/3	
20	BOSSSEN Anne Christina Amdisen	1/8	13	0/1	1/3	0/1	0/1		0/2	
	TOTAL	18/53	34	8/12	5/18	2/4	0/3	1/4	2/12	0/0

Coach: Heine Mogensen Eriksen

Number of attacks: 58, Efficiency: 55%, Average Duration: 31.16 seconds

Attack by type of defense

	Shots	9m	6m	Wing	TF	E7	E2
On def. 6-0	26/40	8/19	1/1	4/4	13	5	2
Fastbreak	2/2				0	0	0

Defense by type

	Total	9m	6m	Wing	Stl.	C7	2m
Def. 6-0	12/17	2/5	6/8	1/1	0	1	0
Def. 5-1	16/34	2/13	6/10	1/3	1	2	1
Def. 4-2	1/2	0/0	1/1	0/0	0	0	0
Fastbreak	3/4				0	0	0

Attack with superiority / minority / goalkeeper out

	Attack				Reaction		
	Att.	Eff.	Shots	TF	FB	LD	Tot.
7 on 6 (GK out)	1	0%	0/1	0	0/0	0/0	0/0
6 on 6 (GK out)	1	0%	0/1	0	1/1	0/0	1/1
6 on 6	51	53%	27/38	13			
6 on 5	4	100%	4/4	0			
5 on 6	1	100%	1/1	0			

Player superiority / GK out counted at the end of attack (in case it changes during attack)

Defense with superiority / minority / goalkeeper out

	Attack				Reaction		
	Att.	Eff.	Shots	TF	FB	LD	Tot.
6 on 6 (GK out)	2	100%	2/2	0	0/0	0/0	0/0
6 on 6	53	58%	31/50	3			
5 on 6	1	0%	0/0	1			
6 on 5	3	67%	2/2	1			

Numbers show attacking numbers of opponent. Lower efficiency of opponent means better defense of this team

Jersey number Tot. Total shooting 6m 6m (line) shooting 9m 9m shooting Wng Wing shooting FB Fastbreak sh. 7m 7m penalty sh.
 Brk. Breakthrough sh. LD Long distance sh. As. Assists PC Pass clear chance E7 Earned 7m pen. TF Technical faults St. Steals
 2m 2m punishments C7. Committed 7m E2 Earned 2m pun. YC. Yellow cards R/B Red/Blue cards Blk. Blocks S Starting Line-up



23rd IHF Women's Junior (U20) World Championship

Slovenia (Celje and Laško)

Main Round II, 1. round



Match Team Statistics

Match No. 55

Denmark 32 - 35 Norway

(16 - 18) (16 - 17)

26.6.2022. 18:30

Attendance: 100

Arena Golovec

Referees: Amar Konjicanin (BIH) / Dino Konjicanin (BIH)

Shot distribution by player

3 M. Wierzba

3/3	0/1	
3/3	1/1	1/2

1 miss.

5 F. Nielsen

3/3		3/3
	0/1	
1/1		1/1

1 block

6 T. Rasmussen

1/1		1/1
1/2	0/1	0/1
	1/2	4/4

1 post 2 miss.

7 A. Ebler

		1/1
		0/1

1 post 1 miss.

9 M. Laursen

		2/2
		1/1

10 C. Skott

2/2		
		1/1

11 J. Lilholt

13 K. Damgaard

15 K. Poulsen

17 L. Johannsen

19 A. Hansen

		1/1

23 T. Frandsen

26 K. Jacobsen

TOTAL

9/9	0/1	7/7
1/2	0/2	1/2
4/4	2/3	8/10

2 post 4 miss. 1 block

Saves distribution goalkeepers

1 M. Romer

1/2	3/4	0/7
3/4	1/1	3/3
0/7	1/3	2/5

12 E. Firgaard

0/1	1/1	0/1
1/1	1/1	
	0/1	0/1

20 A. Bossen

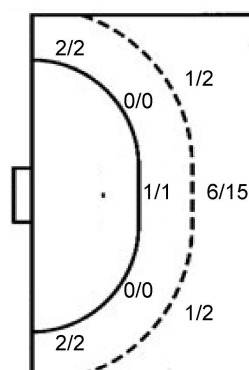
		0/1
1/1		0/1
0/1		0/4

TOTAL

1/3	4/5	0/9
5/6	2/2	3/4
0/8	1/4	2/10

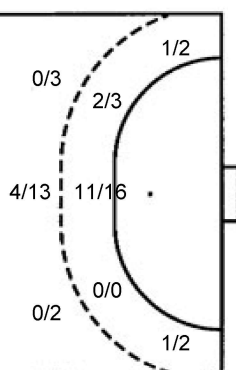
Shots by position

ATTACK



7m penalties 4/5
Fastbreak 2/2
Breakthrough 13/16
Long dist. 0/0

DEFENSE



7m penalties 3/3
Fastbreak 3/4
Breakthrough 10/12
Long dist. 0/0

Shooting statistics

Position	Goals	Sav.	Miss.	Post	Blk.	Total	%
Back (9m)	8	4	4	2	1	19	42
Line (6m)	1	0	0	0	0	1	100
Wing	4	0	0	0	0	4	100
7m penalties	4	1	0	0	0	5	80
Fastbreak	2	0	0	0	0	2	100
Breakthrough	13	3	0	0	0	16	81
Total	32	8	4	2	1	47	68

Jersey number Tot. Total shooting 6m 6m (line) shooting 9m 9m shooting Wng Wing shooting FB Fastbreak sh. 7m 7m penalty sh.
Brk. Breakthrough sh. LD Long distance sh. As. Assists PC Pass clear chance E7 Earned 7m pen. TF Technical faults St. Steals
2m 2m punishments C7. Committed 7m E2 Earned 2m pun. YC. Yellow cards R/B Red/Blue cards Blk. Blocks S Starting Line-up

Handball statistics and livescore by Toma-soft ltd (www.toma-soft.hr)



23rd IHF Women's Junior (U20) World Championship

Slovenia (Celje and Laško)

Main Round II, 1. round



Match Team Statistics

Match No. 55

Denmark 32 - 35 Norway

(16 - 18) (16 - 17)

26.6.2022. 18:30

Attendance: 100

Arena Golovec

Referees: Amar Konjicanin (BIH) / Dino Konjicanin (BIH)

Norway

#	Surname and name	S	Goals / shots							Attack					Def.			Penalties			TP		
			Tot.	%	9m	6m	Wing	7m	FB	Brk.	LD	As.	PC	E7	E2	TF	St.	C7	Blk	YC		2m	R
2	AMUNDSEN Susanne Liberg		1/2	50					1/2														26:48
4	LOKEN Kaja		2/2	100		2/2																	11:51
6	FREI Avril Mikkelsen																1			1			8:29
7	ANDERSEN Frida Brandbu	S	2/5	40	1/3				1/2		2	1	1		1		1						40:58
8	NYPAN Johanne Halseth		2/3	67	1/2				1/1								1						17:21
10	EGGEN Henriette Espetvedt		4/5	80	0/1			1/1	3/3		1	1	1					1		1			24:34
11	ANDERSEN Martine Karigstad	S	4/8	50	0/3				4/5		8	4	1	1	2	2							45:01
12	FOSSUM Johanna	S										1											39:25
13	ROHNE Kaja	S	11/17	65		11/17																	47:34
14	IVERSEN Charlotte Koffeid																						15:01
15	GALD Maria Bergslien	S	2/3	67		1/2		1/1															32:53
17	MIDTFJELD Rikke	S	1/2	50		1/2											1	1					44:19
18	VATNE Celina																						0:30
20	SATEREN Maja Furu	S	6/13	46	2/9			3/3	1/1		6			2		1							46:16
21	MOSSESTAD Lina Waage																						
35	KROGH June Cecilie																						19:00
Team / bench																							
UKUPNO			35/60	58	4/18	13/19	2/4	3/3	3/4	10/12	0/0	17	7	3	1	5	3	5	1	0	2	0	0

#	Surname and name	Saves / shots								
		Tot.	%	9m	6m	Wing	7m	FB	Brk.	LD
12	FOSSUM Johanna	6/25	24	4/7	0/1	0/3	0/3	0/1	2/10	
35	KROGH June Cecilie	2/15	13	0/5		0/1	1/2	0/1	1/6	
TOTAL		8/40	20	4/12	0/1	0/4	1/5	1/2	3/16	0/0

Coach: Tore Johannessen

Number of attacks: 59, Efficiency: 59%, Average Duration: 30.91 seconds

Attack by type of defense

	Shots	9m	6m	Wing	TF	E7	E2
On def. 6-0	12/17	2/5	6/8	1/1	0	1	0
On def. 5-1	16/34	2/13	6/10	1/3	4	2	1
On def. 4-2	1/2	0/0	1/1	0/0	1	0	0
Fastbreak	3/4				0	0	0

Defense by type

	Total	9m	6m	Wing	Stl.	C7	2m
Def. 6-0	26/40	8/19	1/1	4/4	3	5	2
Fastbreak	2/2				0	0	0

Attack with superiority / minority / goalkeeper out

	Attack				Reaction		
	Att.	Eff.	Shots	TF	FB	LD	Tot.
6 on 6 (GK out)	2	100%	2/2	0	0/0	0/0	0/0
6 on 6	53	58%	31/50	3			
5 on 6	1	0%	0/0	1			
6 on 5	3	67%	2/2	1			

Player superiority / GK out counted at the end of attack (in case it changes during attack)

Defense with superiority / minority / goalkeeper out

	Attack				Reaction		
	Att.	Eff.	Shots	TF	FB	LD	Tot.
7 on 6 (GK out)	1	0%	0/1	0	0/0	0/0	0/0
6 on 6 (GK out)	1	0%	0/1	0	1/1	0/0	1/1
6 on 6	51	53%	27/38	13			
6 on 5	4	100%	4/4	0			
5 on 6	1	100%	1/1	0			

Numbers show attacking numbers of opponent. Lower efficiency of opponent means better defense of this team

Jersey number Tot. Total shooting 6m 6m (line) shooting 9m 9m shooting Wng Wing shooting FB Fastbreak sh. 7m 7m penalty sh.
 Brk. Breakthrough sh. LD Long distance sh. As. Assists PC Pass clear chance E7 Earned 7m pen. TF Technical faults St. Steals
 2m 2m punishments C7. Committed 7m E2 Earned 2m pun. YC. Yellow cards R/B Red/Blue cards Blk. Blocks S Starting Line-up



23rd IHF Women's Junior (U20) World Championship

Slovenia (Celje and Laško)

Main Round II, 1. round



Match Team Statistics

Match No. 55

Denmark 32 - 35 Norway

(16 - 18) (16 - 17)

26.6.2022. 18:30

Attendance: 100

Arena Golovec

Referees: Amar Konjicanin (BIH) / Dino Konjicanin (BIH)

Shot distribution by player

2 S. Amundsen

		1/1
0/1		

4 K. Loken

	1/1	1/1

6 A. Frei

7 F. Andersen

1/1	0/1	
	0/1	1/2

8 J. Nypan

1/2		
		1/1

10 H. Eggen

0/1	1/1	2/2
1/1		

11 M. Andersen

1/1	0/1	
2/2		1/1

2 miss. 1 block

13 K. Rohne

		3/3
0/2	0/1	
2/2	2/2	2/4

1 miss. 2/2 lob

14 C. Iversen

15 M. Gald

		1/1
	0/1	1/1

17 R. Midtfield

	0/1	
1/1		

18 C. Vatne

20 M. Sateren

	0/1	2/2
0/1		0/2
2/2		2/2

1 miss. 2 block

21 L. Mossestad

TOTAL

2/3	1/5	9/9
1/6	0/2	1/4
8/8	3/4	8/10

4 miss. 3 block 2/2 lob

Saves distribution goalkeepers

12 J. Fossum

0/4	1/1	0/6
	1/1	1/2
0/2	1/2	2/7

35 J. Krogh

0/5		0/1
1/2	1/1	
0/2	0/1	0/3

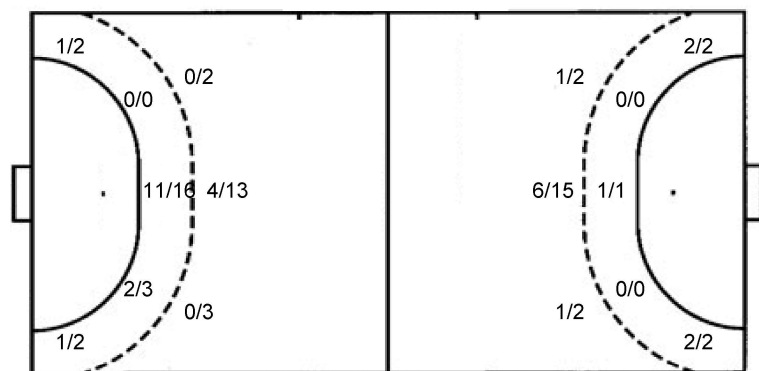
TOTAL

0/9	1/1	0/7
1/2	2/2	1/2
0/4	1/3	2/10

Shots by position

ATTACK

DEFENSE



7m penalties 3/3
 Fastbreak 3/4
 Breakthrough 10/12
 Long dist. 0/0

7m penalties 4/5
 Fastbreak 2/2
 Breakthrough 13/16
 Long dist. 0/0

Shooting statistics

Position	Goals	Sav.	Miss.	Post	Blk.	Total	%
Back (9m)	4	8	3	0	3	18	22
Line (6m)	13	5	1	0	0	19	68
Wing	2	2	0	0	0	4	50
7m penalties	3	0	0	0	0	3	100
Fastbreak	3	1	0	0	0	4	75
Breakthrough	10	2	0	0	0	12	83
Total	35	18	4	0	3	60	58

Jersey number Tot. Total shooting 6m 6m (line) shooting 9m 9m shooting Wng Wing shooting FB Fastbreak sh. 7m 7m penalty sh.
 Brk. Breakthrough sh. LD Long distance sh. As. Assists PC Pass clear chance E7 Earned 7m pen. TF Technical faults St. Steals
 2m 2m punishments C7. Committed 7m E2 Earned 2m pun. YC. Yellow cards R/B Red/Blue cards Blk. Blocks S Starting Line-up

Handball statistics and livescore by Toma-soft ltd (www.toma-soft.hr)



23rd IHF Women's Junior (U20) World Championship

Slovenia (Celje and Laško)

Main Round II, 1. round



Match Team Statistics

Match No. 55

Denmark 32 - 35 Norway

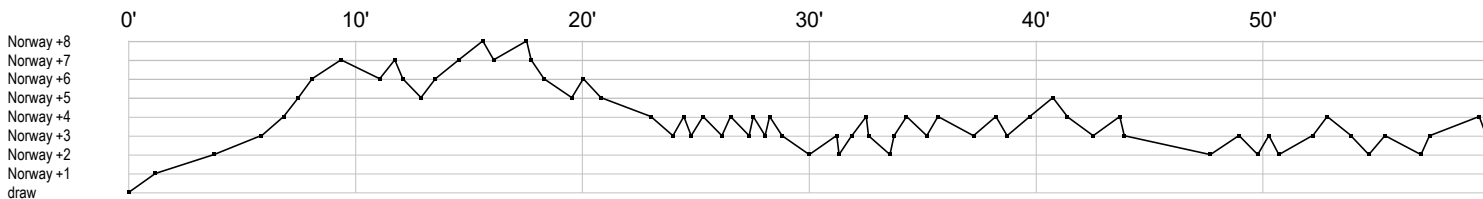
(16 - 18) (16 - 17)

26.6.2022. 18:30

Attendance: 100

Arena Golovec

Referees: Amar Konjicanin (BIH) / Dino Konjicanin (BIH)



Denmark

1 Romer M	s r r r r s r s r s r s r r ar r r r r s r r r sas r r r s s r s s s r s r r
3 Wierzba M	f t f t f g g g a t g a t2c i e g g g e g
5 Nielsen F	g g g g x e g f g t a f
6 Rasmussen T	f f f g g f a i e g g g f g f a g gef c f t
7 Ebler A	f c f g f t t
9 Laursen M	g g g
10 Skott C	g g g
11 Lilholt J	t
12 Firgaard E	r s r s r s r
13 Damgaard K	x
15 Poulsen K	
17 Johannsen L	
19 Hansen A	t t b g
20 Bossen A	r s t r r r r r
23 Frandsen T	
26 Jacobsen K	

Norway

2 Amundsen S	f g
4 Loken K	g g
6 Frei A	2c
7 Andersen F	e g t f a g p f a c f
8 Nypan J	g f g c
10 Eggen H	g a g f g e 2 g p x
11 Andersen M	a p a f a g a p a f a g t f g p bei p b a g f a
12 Fossum J	s s s p r r r r s r r r r r r r r r s r r r
13 Rohne K	g f g g f g g g g g g g f f f g
14 Iversen C	
15 Gald M	f g g
17 Midtfield R	b g f c
18 Vatne C	
20 Sateren M	f g a g f a t g f a a c a g t a f f g g f f
21 Mossestad L	
35 Krogh J	r r r r r r r r s r r r s r r

In game	g Goal scored	f Missed shot	a Assist	t Technical faults	b Steal
2 2min suspension	e Earned 7m	c Committed 7m	y Yellow card	r Red Card	k Blue card
i Earned 2min.	x Block	4 4min suspension	p Pass for clear chance	s Saved shot	r Received goal