



23rd IHF Women's Junior (U20) World Championship

Slovenia (Celje and Laško)

President's Cup I, 1. round



Match Team Statistics

Match No. 49

Slovakia 31 - 23 Guinea

(13 - 8) (18 - 15)

26.6.2022. 14:30

Attendance: 40

Arena Golovec

Referees: Agustin Conberse (ARG) / Santiago Correa (ARG)

Slovakia

#	Surname and name	S	Goals / shots								Attack					Def.			Penalties				TP										
			Tot.	%	9m	6m	Wing	7m	FB	Brk.	LD	As.	PC	E7	E2	TF	St.	C7	Blk	YC	2m	R		B									
5	KUCSERA Rebeka		2/3	67			1/2		1/1																							14:44	
7	VARGOVÁ Diana Mária	S	1/5	20	0/1			1/1	0/1	0/2			2	3	2		1															26:18	
9	GYÖRIOVÁ Viktória		6/8	75		2/3		1/2	2/2	1/1			1		1						1	1										27:36	
10	ŠČIPOVÁ Olívia	S	5/9	56	1/2			1/1	1/1	2/5			1	2																		52:32	
12	KUSYOVÁ Kristína																															3:56	
13	LUKÁČOVÁ Emma		1/3	33			0/2		1/1																							6:53	
15	ZSAKOVICS Sára Erika		2/2	100						2/2			2	1		1	1																
17	HORNYÁK Panna		1/4	25	1/4																											20:12	
19	VORŽÁČKOVÁ Viktoria	S	1/1	100							1/1		1																			47:49	
21	BAČENKOVÁ Dorota		3/6	50	1/1				2/2	0/3			1	2	2	1	3	1														43:29	
22	ZLATINSKÁ Vivien	S	2/5	40			0/1		1/2	1/2																						28:33	
23	DVORŠČAKOVÁ Alena	S	3/6	50	2/4			0/1		1/1			2			1	1															52:50	
25	PÉNZEŠ Monika	S	3/5	60			0/2		1/1	2/2											1	1										50:51	
27	DMYTRENKO Nataliia	S	1/2	50			0/1		1/1																							34:35	
29	PÁLOVÁ Petra		0/1	0					0/1																							9:12	
Team / bench																																	
UKUPNO			31/60	52	5/12	2/3	1/8	3/5	10/13	9/18	1/1		7	9	5	3	10	5	3	2													

#	Surname and name	Saves / shots								
		Tot.	%	9m	6m	Wing	7m	FB	Brk.	LD
12	KUSYOVÁ Kristína	1/5	20					1/2	0/3	
19	VORŽÁČKOVÁ Viktoria	19/37	51	7/7	3/3	2/8	1/3	0/1	6/15	
TOTAL		20/42	48	7/7	3/3	2/8	1/3	1/3	6/18	0/0

Coach: Ján Beňadič

Number of attacks: 64, Efficiency: 48%, Average Duration: 21.76 seconds

Attack by type of defense

	Shots	9m	6m	Wing	TF	E7	E2
On def. 6-0	10/28	4/8	1/2	1/7	7	3	1
On def. 5-1	7/13	1/4	1/1	0/1	3	2	2
Fastbreak	10/13				0	0	0

Defense by type

	Total	9m	6m	Wing	Stl.	C7	2m
Def. 6-0	16/38	0/12	0/3	4/6	3	3	1
Def. 5-1	2/2	0/0	0/0	2/2	0	0	0
Def. 3-2-1	0/4	0/1	0/0	0/0	2	0	0
Fastbreak	3/4				0	0	0

Attack with superiority / minority / goalkeeper out

	Attack				Reaction		
	Att.	Eff.	Shots	TF	FB	LD	Tot.
6 on 6 (GK out)	2	0%	0/2	0	1/1	0/0	1/1
6 on 6	55	49%	27/46	9			
6 on 5	7	57%	4/6	1			

Player superiority / GK out counted at the end of attack (in case it changes during attack)

Defense with superiority / minority / goalkeeper out

	Attack				Reaction		
	Att.	Eff.	Shots	TF	FB	LD	Tot.
6 on 6 (GK out)	5	40%	2/4	1	0/0	1/1	1/1
6 on 6	58	34%	20/39	19			
6 on 5	2	50%	1/2	0			

Numbers show attacking numbers of opponent. Lower efficiency of opponent means better defense of this team

Jersey number Tot. Total shooting 6m 6m (line) shooting 9m 9m shooting Wng Wing shooting FB Fastbreak sh. 7m 7m penalty sh.
 Brk. Breakthrough sh. LD Long distance sh. As. Assists PC Pass clear chance E7 Earned 7m pen. TF Technical faults St. Steals
 2m 2m punishments C7. Committed 7m E2 Earned 2m pun. YC. Yellow cards R/B Red/Blue cards Blk. Blocks S Starting Line-up

Handball statistics and livescore by Toma-soft ltd (www.toma-soft.hr)



23rd IHF Women's Junior (U20) World Championship

Slovenia (Celje and Laško)

President's Cup I, 1. round



Match Team Statistics

Match No. 49

Slovakia 31 - 23 Guinea

(13 - 8) (18 - 15)

26.6.2022. 14:30

Attendance: 40

Arena Golovec

Referees: Agustin Conberse (ARG) / Santiago Correa (ARG)

Shot distribution by player

5 R. Kucsera

2/2		

1 post

7 D. Vargová

		0/3
		1/1

1 miss.

9 V. Györiová

3/3		2/2
1/2		

1 post

10 O. Ščipová

1/1		1/2
		1/1
1/2		1/1

1 post 1 miss.

13 E. Lukáčová

		0/2
		1/1

15 S. Zsákovics

		1/1
1/1		

17 P. Hornyák

0/2		1/1
		0/1

21 D. Bačenková

	0/1	3/3
0/1		

1 miss.

22 V. Zlatinská

1/1		1/1
0/1		0/1

1 post

23 A. Dvorščáková

1/2		
1/1		1/2

1 post

25 M. Péntzes

1/2		
	1/2	1/1

27 N. Dmytrenko

	1/2	

29 P. Pálová

	0/1	

TOTAL

7/11	0/1	8/11
0/1		2/6
6/9	2/5	5/7

5 post 3 miss.

Saves distribution goalkeepers

12 K. Kusyová

0/2	1/1	0/1
		0/1

19 V. Voržáčková

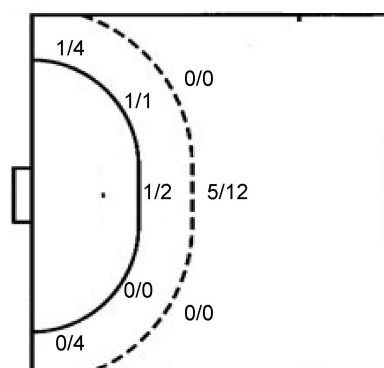
2/5	1/1	1/9
3/3	1/2	0/2
8/11	1/1	2/3

TOTAL

2/7	2/2	1/10
3/3	1/2	0/2
8/11	1/1	2/4

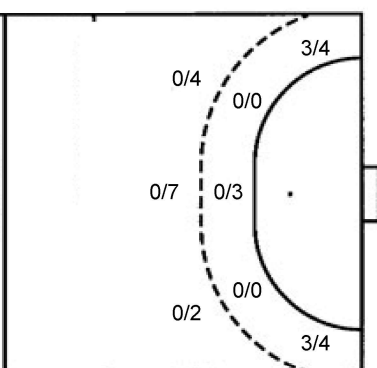
Shots by position

ATTACK



7m penalties 3/5
Fastbreak 10/13
Breakthrough 9/18
Long dist. 1/1

DEFENSE



7m penalties 2/3
Fastbreak 3/4
Breakthrough 12/20
Long dist. 0/0

Shooting statistics

Position	Goals	Sav.	Miss.	Post	Blk.	Total	%
Back (9m)	5	5	0	2	0	12	42
Line (6m)	2	1	0	0	0	3	67
Wing	1	6	0	1	0	8	13
7m penalties	3	1	0	1	0	5	60
Fastbreak	10	3	0	0	0	13	77
Breakthrough	9	5	3	1	0	18	50
Total	30	21	3	5	0	59	51

Jersey number Tot. Total shooting 6m 6m (line) shooting 9m 9m shooting Wng Wing shooting FB Fastbreak sh. 7m 7m penalty sh.
Brk. Breakthrough sh. LD Long distance sh. As. Assists PC Pass clear chance E7 Earned 7m pen. TF Technical faults St. Steals
2m 2m punishments C7. Committed 7m E2 Earned 2m pun. YC. Yellow cards R/B Red/Blue cards Blk. Blocks S Starting Line-up

Handball statistics and livescore by Toma-soft ltd (www.toma-soft.hr)



23rd IHF Women's Junior (U20) World Championship

Slovenia (Celje and Laško)

President's Cup I, 1. round



Match Team Statistics

Match No. 49

Slovakia 31 - 23 Guinea

(13 - 8) (18 - 15)

26.6.2022. 14:30

Attendance: 40

Arena Golovec

Referees: Agustin Conberse (ARG) / Santiago Correa (ARG)

Guinea

#	Surname and name	S	Goals / shots								Attack					Def.			Penalties			TP				
			Tot.	%	9m	6m	Wing	7m	FB	Brk.	LD	As.	PC	E7	E2	TF	St.	C7	Blk	YC	2m		R	B		
1	KABA Téninké																									
3	DIARRA Fatoumata		1/5	20	0/2		1/2			0/1		1	1	1	1	4										35:51
4	SYLLA Yarie	S	6/7	86			1/2	2/2	1/1	2/2		1	1							1						36:37
5	TOLNO Sia Céline	S	9/14	64	0/1		1/1		1/1	7/11				2		2										41:48
6	BARADJI Assa	S	0/2	0	0/2																					37:08
8	SANKHON Kadiatou	S	2/4	50	0/1		2/2			0/1						3				1						44:28
9	DIEYE Keisha	S	0/5	0	0/2	0/1		0/1		0/1						3		1								60:00
10	KONATE Mama											1														0:10
11	DIALLO Fatoumata Binta		4/8	50	0/3		1/1			3/4					3		1									26:47
12	CAMARA Nioumangue																									
13	CAMARA Bintou		0/2	0	0/2										2											11:37
14	YOULA M'mah		0/1	0					0/1																	
15	KOUROUMA M'mah	S	1/1	100					1/1				1		1		1									41:25
16	CISSE Diakonba																									1:47
22	NYAMY TCHAMY Meganne Daysie		0/2	0	0/2											1		1					2			24:09
26	TUBANZA Anne Cécile	S										1														58:13
	Team / bench															1										
	UKUPNO		23/51	45	0/13	0/3	6/8	2/3	3/4	12/20	0/0	4	3	3	1	20	0	5	0	1	3	0	0			

#	Surname and name	Saves / shots								
		Tot.	%	9m	6m	Wing	7m	FB	Brk.	LD
1	KABA Téninké									
16	CISSE Diakonba	1/2	50				1/2			
26	TUBANZA Anne Cécile	20/49	41	5/10	1/3	6/7	0/2	3/13	5/14	
	TOTAL	21/51	41	5/10	1/3	6/7	1/4	4/13	5/14	0/0

Coach: Jean-Louis Leblond

Number of attacks: 65, Efficiency: 35%, Average Duration: 34.02 seconds

Attack by type of defense

	Shots	9m	6m	Wing	TF	E7	E2
On def. 6-0	16/38	0/12	0/3	4/6	14	3	1
On def. 5-1	2/2	0/0	0/0	2/2	1	0	0
On def. 3-2-1	0/4	0/1	0/0	0/0	5	0	0
Fastbreak	3/4				0	0	0

Defense by type

	Total	9m	6m	Wing	Stl.	C7	2m
Def. 6-0	10/28	4/8	1/2	1/7	0	3	1
Def. 5-1	7/13	1/4	1/1	0/1	0	2	2
Fastbreak	10/13				0	0	0

Attack with superiority / minority / goalkeeper out

	Attack				Reaction		
	Att.	Eff.	Shots	TF	FB	LD	Tot.
6 on 6 (GK out)	5	40%	2/4	1	0/0	1/1	1/1
6 on 6	58	34%	20/39	19			
6 on 5	2	50%	1/2	0			

Player superiority / GK out counted at the end of attack (in case it changes during attack)

Defense with superiority / minority / goalkeeper out

	Attack				Reaction		
	Att.	Eff.	Shots	TF	FB	LD	Tot.
6 on 6 (GK out)	2	0%	0/2	0	1/1	0/0	1/1
6 on 6	55	49%	27/46	9			
6 on 5	7	57%	4/6	1			

Numbers show attacking numbers of opponent. Lower efficiency of opponent means better defense of this team

Jersey number Tot. Total shooting 6m 6m (line) shooting 9m 9m shooting Wng Wing shooting FB Fastbreak sh. 7m 7m penalty sh.
 Brk. Breakthrough sh. LD Long distance sh. As. Assists PC Pass clear chance E7 Earned 7m pen. TF Technical faults St. Steals
 2m 2m punishments C7 Committed 7m E2 Earned 2m pun. YC Yellow cards R/B Red/Blue cards Blk. Blocks S Starting Line-up



23rd IHF Women's Junior (U20) World Championship

Slovenia (Celje and Laško)

President's Cup I, 1. round



Match Team Statistics

Match No. 49

Slovakia 31 - 23 Guinea

(13 - 8) (18 - 15)

26.6.2022. 14:30

Attendance: 40

Arena Golovec

Referees: Agustin Conberse (ARG) / Santiago Correa (ARG)

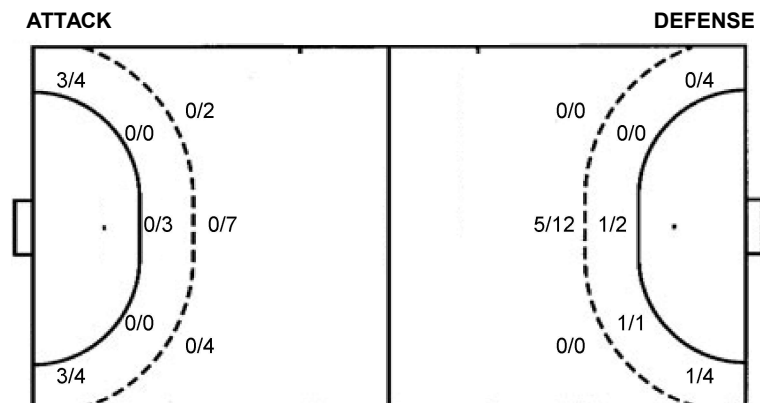
Shot distribution by player

3 F. Diarra 0/1 0/1 0/2 1/1 lob	4 Y. Sylla 1/2 1/1 1/1	5 S. Tolno 2/2 0/1 0/2 2 miss.	6 A. Baradji 0/1 1 miss.	8 K. Sankhon 2/3 1 miss.	9 K. Dieye 0/2 0/2 1 miss.	10 M. Konate	11 F. Diallo 2/2 0/1 0/1 1 miss. 1 block	12 N. Camara	13 B. Camara 0/1 1 miss.	14 M. Youla 0/1	15 M. Kourouma 1/1	22 M. Nyamy Tchamy 0/1 0/1	TOTAL 5/7 0/3 3/11 0/2 1/2 0/1 9/10 2/2 2/4 7 miss. 1 block 1/1 lob
--	--	---	---------------------------------------	---------------------------------------	--	---------------------	---	---------------------	---------------------------------------	---------------------------	------------------------------	---	--

Saves distribution goalkeepers

1 T. Kaba	16 D. Cisse 1/1 0/1	26 A. Tubanza 3/10 1/1 0/1 3/8 1/1 0/1 3/11 4/6 2/7	TOTAL 4/11 1/1 3/11 1/1 0/1 4/6 3/9 3/5 2/7
------------------	----------------------------------	---	---

Shots by position



7m penalties 2/3
Fastbreak 3/4
Breakthrough 12/20
Long dist. 0/0

7m penalties 3/5
Fastbreak 10/13
Breakthrough 9/18
Long dist. 1/1

Shooting statistics

Position	Goals	Sav.	Miss.	Post	Blk.	Total	%
Back (9m)	0	7	5	0	1	13	0
Line (6m)	0	3	0	0	0	3	0
Wing	6	2	0	0	0	8	75
7m penalties	2	1	0	0	0	3	67
Fastbreak	3	1	0	0	0	4	75
Breakthrough	12	6	2	0	0	20	60
Total	23	20	7	0	1	51	45

Jersey number Tot. Total shooting 6m 6m (line) shooting 9m 9m shooting Wng Wing shooting FB Fastbreak sh. 7m 7m penalty sh.
Brk. Breakthrough sh. LD Long distance sh. As. Assists PC Pass clear chance E7 Earned 7m pen. TF Technical faults St. Steals
2m 2m punishments C7. Committed 7m E2 Earned 2m pun. YC. Yellow cards R/B Red/Blue cards Blk. Blocks S Starting Line-up

Handball statistics and livescore by Toma-soft ltd (www.toma-soft.hr)

