



# 23rd IHF Women's Junior (U20) World Championship

Slovenia (Celje and Laško)

Group F, 3. round



Match Team Statistics

Match No. 42

## Germany 27 - 21 Slovenia

(14 - 10) (13 - 11)

25.6.2022. 18:30

Attendance: 400

Arena Golovec

Referees: Maria Ines Paolantoni (ARG) / Mariana Garcia (ARG)

### Germany

Players		Goals / shots									Attack				Def.			Penalties			TP					
#	Surname and name	S	Tot.	%	9m	6m	Wing	7m	FB	Brk.	LD	As.	PC	E7	E2	TF	St.	C7	Blk	YC		2m	R	B		
5	PFLEIDERER Marie	S	1/1	100		1/1									1	1	2		1			2			56:03	
6	JOERGENS Lucy	S	3/5	60	2/3					1/2		1		1	1	3									30:58	
7	SEIDEL Lara	S	0/2	0			0/1	0/1				1				1		1							30:58	
8	HERTHA Emma		2/4	50	1/3				1/1			1	3		1	1	1								31:14	
9	ZIERCKE Mia Malin		1/3	33			0/2			1/1															25:23	
10	HEIDER Lotta		1/2	50	0/1		1/1																		9:33	
11	TIETJEN Judith	S	4/7	57			4/7											1			1				48:39	
12	HUMPERT Alexandra	S													1										31:53	
13	ENGEL Nina	S	7/10	70	3/5				2/2	2/3		2	1			2					1				59:22	
14	RUWE Emma		2/2	100				2/2				1					1	1							21:15	
15	RUWE Leni		3/4	75	2/3					1/1		1		1	1						1				18:42	
16	KRUEGER Annabell Marie																								24:09	
19	SCHAUBE Jonna		1/1	100		1/1																			5:08	
20	GERSTWEILER Lotta	S	1/2	50	0/1	1/1													1						20:14	
21	WEYERS Sophie		1/1	100			1/1																		4:48	
23	BESSERT Tyra												1												1:41	
Team / bench																										
UKUPNO			27/44	61	8/16	3/3	6/12	2/3	3/3	5/7	0/0	7	5	3	4	10	2	4	1	0	5	0	0			

Goalkeepers		Saves / shots								
#	Surname and name	Tot.	%	9m	6m	Wing	7m	FB	Brk.	LD
12	HUMPERT Alexandra	11/21	52	4/5	2/4	1/2	1/2	1/1	2/7	
16	KRUEGER Annabell Marie	3/14	21	1/2	1/5	0/1	0/1		1/5	
TOTAL		14/35	40	5/7	3/9	1/3	1/3	1/1	3/12	0/0

Coach: Andre Fuhr

Number of attacks: 50, Efficiency: 54%, Average Duration: 34.90 seconds

### Attack by type of defense

	Shots	9m	6m	Wing	TF	E7	E2
On def. 6-0	16/26	6/12	2/2	5/8	7	1	2
On def. 5-1	6/12	2/4	1/1	1/4	3	2	2
Fastbreak	3/3				0	0	0

### Defense by type

	Total	9m	6m	Wing	Stl.	C7	2m
Def. 6-0	18/32	2/10	6/8	2/3	2	4	5
Def. 5-1	1/4	0/0	0/1	0/0	0	0	0
Fastbreak	0/1				0	0	0

### Attack with superiority / minority / goalkeeper out

	Attack				Reaction		
	Att.	Eff.	Shots	TF	FB	LD	Tot.
7 on 6 (GK out)	1	0%	0/1	0	0/0	0/0	0/0
6 on 6 (GK out)	1	100%	1/1	0	0/0	0/0	0/0
6 on 6	34	56%	19/28	6			
6 on 5	9	44%	4/6	3			
5 on 6	3	100%	3/3	0			
5 on 5	1	0%	0/1	0			
4 on 6	1	0%	0/0	1			

Player superiority / GK out counted at the end of attack (in case it changes during attack)

### Defense with superiority / minority / goalkeeper out

	Attack				Reaction		
	Att.	Eff.	Shots	TF	FB	LD	Tot.
6 on 6 (GK out)	1	100%	1/1	0	0/0	0/0	0/0
6 on 6	34	41%	14/27	7			
5 on 6	4	25%	1/3	1			
7 on 5 (GK out)	1	100%	1/1	0	0/0	0/0	0/0
6 on 5 (GK out)	1	0%	0/1	0	0/0	0/0	0/0
6 on 5	7	57%	4/6	1			
6 on 4	1	0%	0/0	1			

Numbers show attacking numbers of opponent. Lower efficiency of opponent means better defense of this team

# Jersey number Tot. Total shooting 6m 6m (line) shooting 9m 9m shooting Wng Wing shooting FB Fastbreak sh. 7m 7m penalty sh.  
 Brk. Breakthrough sh. LD Long distance sh. As. Assists PC Pass clear chance E7 Earned 7m pen. TF Technical faults St. Steals  
 2m 2m punishments C7. Committed 7m E2 Earned 2m pun. YC. Yellow cards R/B Red/Blue cards Blk. Blocks S Starting Line-up



# 23rd IHF Women's Junior (U20) World Championship

## Slovenia (Celje and Laško)

### Group F, 3. round



#### Match Team Statistics

Match No. 42

## Germany 27 - 21 Slovenia

(14 - 10) (13 - 11)

25.6.2022. 18:30

Attendance: 400

Arena Golovec

Referees: Maria Ines Paolantoni (ARG) / Mariana Garcia (ARG)

#### Shot distribution by player

5 M. Pfeleiderer


1/1 lob

6 L. Joergens

		1/1
		1/1
1/1	0/1	

1 block

7 L. Seidel

		0/1

1 miss.

8 E. Hertha

1/1		
	1/1	

1 miss. 1 block

9 M. Ziercke

	0/1	1/1

1 miss.

10 L. Heider

		1/1

1 block

11 J. Tietjen

3/3		
0/1	0/1	0/1
	1/1	

13 N. Engel

4/4		
1/2		1/1
		1/1

2 block

14 E. Ruwe

1/1		
		1/1

15 L. Ruwe

		1/1
		1/2
		1/1

19 J. Schaub

1/1		

20 L. Gerstweiler


1 miss. 1/1 lob

21 S. Weyers

		1/1

23 T. Bessert


#### TOTAL

9/9		3/3
2/4	0/2	5/8
1/1	2/3	3/3

4 miss. 5 block 2/2 lob

#### Saves distribution goalkeepers

12 A. Humpert

1/2	1/2	1/2
3/3	1/1	1/2
0/2	1/1	2/5

16 A. Krueger

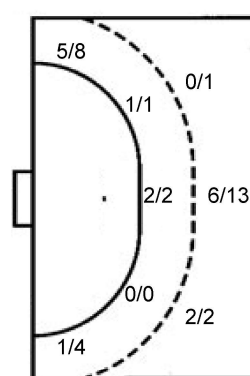
0/2		0/1
2/2		1/3
0/4		0/2

TOTAL

1/4	1/2	1/3
5/5	1/1	2/5
0/6	1/1	2/7

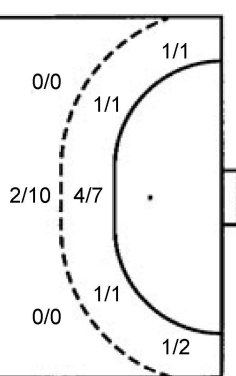
#### Shots by position

ATTACK



7m penalties 2/3  
Fastbreak 3/3  
Breakthrough 5/7  
Long dist. 0/0

DEFENSE



7m penalties 2/4  
Fastbreak 0/1  
Breakthrough 9/14  
Long dist. 0/0

#### Shooting statistics

Position	Goals	Sav.	Miss.	Post	Blk.	Total	%
Back (9m)	8	1	2	0	5	16	50
Line (6m)	3	0	0	0	0	3	100
Wing	6	4	2	0	0	12	50
7m penalties	2	1	0	0	0	3	67
Fastbreak	3	0	0	0	0	3	100
Breakthrough	5	2	0	0	0	7	71
<b>Total</b>	<b>27</b>	<b>8</b>	<b>4</b>	<b>0</b>	<b>5</b>	<b>44</b>	<b>61</b>

# Jersey number Tot. Total shooting 6m 6m (line) shooting 9m 9m shooting Wng Wing shooting FB Fastbreak sh. 7m 7m penalty sh.  
Brk. Breakthrough sh. LD Long distance sh. As. Assists PC Pass clear chance E7 Earned 7m pen. TF Technical faults St. Steals  
2m 2m punishments C7. Committed 7m E2 Earned 2m pun. YC. Yellow cards R/B Red/Blue cards Blk. Blocks S Starting Line-up

Handball statistics and livescore by Toma-soft ltd (www.toma-soft.hr)



# 23rd IHF Women's Junior (U20) World Championship

Slovenia (Celje and Laško)

Group F, 3. round



Match Team Statistics

Match No. 42

## Germany 27 - 21 Slovenia

(14 - 10) (13 - 11)

25.6.2022. 18:30

Attendance: 400

Arena Golovec

Referees: Maria Ines Paolantoni (ARG) / Mariana Garcia (ARG)

### Slovenia

#	Surname and name	S	Goals / shots								Attack					Def.			Penalties			TP			
			Tot.	%	9m	6m	Wing	7m	FB	Brk.	LD	As.	PC	E7	E2	TF	St.	C7	Blk	YC	2m		R	B	
1	POSEGA Saša																								7:31
3	BARUKČIČ Ivona		5/8	63		3/3																			51:22
4	KOLOBARIČ Anja		1/1	100																					14:05
5	ŽENER Tjaša		2/2	100																					13:02
7	ZULIČ Azra	S	0/1	0	0/1																				14:45
8	TOMC Tia	S	1/3	33	0/1	1/1																			7:57
9	OCEPEK Nika	S																							8:54
10	NOVAK Erin	S	4/10	40	1/3	0/1		1/2	0/1	2/3															50:16
13	POLAK Neja																								16:18
14	MARKOVIČ Ema Marija		1/2	50		1/2																			52:55
16	KURALT Karin	S																							48:10
17	TAENG ON ČOKELC Ana																								1:49
18	ČERNIGOJ Nena	S	3/5	60	0/1		1/1	1/2		1/1															59:45
19	ARTELJ Lana	S	1/4	25	0/3					1/1															21:37
20	DOBNIK Nika																								7:54
99	KLEMENČIČ Valentina Tina		3/5	60	1/1	2/4																			43:40
	Team / bench																								
	UKUPNO		21/41	51	2/10	6/9	2/3	2/4	0/1	9/14	0/0	5	5	4	5	10	2	3	3	2	5	0	0		

#	Surname and name	Saves / shots								
		Tot.	%	9m	6m	Wing	7m	FB	Brk.	LD
1	POSEGA Saša	0/3	0	0/1	0/1				0/1	
16	KURALT Karin	8/32	25	1/8	0/2	4/10	1/3	0/3	2/6	
	TOTAL	8/35	23	1/9	0/3	4/10	1/3	1/3	2/7	0/0

Coach: Sebastijan Oblak

Number of attacks: 49, Efficiency: 43%, Average Duration: 37.00 seconds

### Attack by type of defense

	Shots	9m	6m	Wing	TF	E7	E2
On def. 6-0	18/32	2/10	6/8	2/3	10	4	5
On def. 5-1	1/4	0/0	0/1	0/0	0	0	0
Fastbreak	0/1				0	0	0

### Defense by type

	Total	9m	6m	Wing	Stl.	C7	2m
Def. 6-0	16/26	6/12	2/2	5/8	1	1	3
Def. 5-1	6/12	2/4	1/1	1/4	1	2	2
Fastbreak	3/3				0	0	0

### Attack with superiority / minority / goalkeeper out

	Attack				Reaction		
	Att.	Eff.	Shots	TF	FB	LD	Tot.
6 on 6 (GK out)	1	100%	1/1	0	0/0	0/0	0/0
6 on 6	34	41%	14/27	7			
5 on 6	4	25%	1/3	1			
7 on 5 (GK out)	1	100%	1/1	0	0/0	0/0	0/0
6 on 5 (GK out)	1	0%	0/1	0	0/0	0/0	0/0
6 on 5	7	57%	4/6	1			
6 on 4	1	0%	0/0	1			

Player superiority / GK out counted at the end of attack (in case it changes during attack)

### Defense with superiority / minority / goalkeeper out

	Attack				Reaction		
	Att.	Eff.	Shots	TF	FB	LD	Tot.
7 on 6 (GK out)	1	0%	0/1	0	0/0	0/0	0/0
6 on 6 (GK out)	1	100%	1/1	0	0/0	0/0	0/0
6 on 6	34	56%	19/28	6			
6 on 5	9	44%	4/6	3			
5 on 6	3	100%	3/3	0			
5 on 5	1	0%	0/1	0			
4 on 6	1	0%	0/0	1			

Numbers show attacking numbers of opponent. Lower efficiency of opponent means better defense of this team

# Jersey number Tot. Total shooting 6m 6m (line) shooting 9m 9m shooting Wng Wing shooting FB Fastbreak sh. 7m 7m penalty sh.  
 Brk. Breakthrough sh. LD Long distance sh. As. Assists PC Pass clear chance E7 Earned 7m pen. TF Technical faults St. Steals  
 2m 2m punishments C7. Committed 7m E2 Earned 2m pun. YC. Yellow cards R/B Red/Blue cards Blk. Blocks S Starting Line-up



# 23rd IHF Women's Junior (U20) World Championship

## Slovenia (Celje and Laško)

### Group F, 3. round



#### Match Team Statistics

Match No. 42

## Germany 27 - 21 Slovenia

(14 - 10) (13 - 11)

25.6.2022. 18:30

Attendance: 400

Arena Golovec

Referees: Maria Ines Paolantoni (ARG) / Mariana Garcia (ARG)

#### Shot distribution by player

<b>3 I. Barukčić</b> 1/1    1/1 0/1 2/2 2 miss. 1/1 lob	<b>4 A. Kolobaric</b> 1/1	<b>5 T. Žener</b> 2/2	<b>7 A. Zulić</b> 0/1	<b>8 T. Tomc</b> 0/1    0/1 1/1	<b>9 N. Ocepek</b>	<b>10 E. Novak</b> 0/3    1/1 1/1    0/1    2/2 1 miss. 1 block
<b>13 N. Polak</b>	<b>14 E. Marković</b> 1/2	<b>17 A. Taeng On Čokelc</b>	<b>18 N. Černigoj</b> 1/1    0/1 1/1 1/1 1 post	<b>19 L. Artelj</b> 0/1    1/1 0/1	<b>20 N. Dobnik</b> 1 post	<b>99 V. Klemenčič</b> 2/2    0/1 0/1    1/1

#### TOTAL

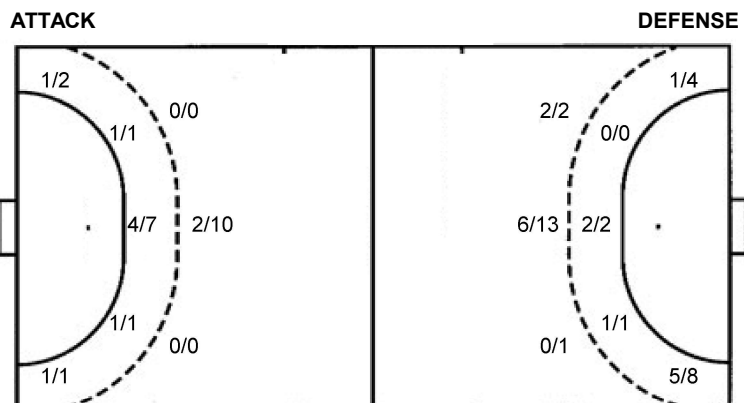
3/4	1/2	2/3
0/5	0/1	3/5
6/6	0/1	5/7

2 post 3 miss. 1 block 1/1 lob

#### Saves distribution goalkeepers

<b>1 S. Posega</b> 0/2	<b>16 K. Kuralt</b> 0/9    0/1 2/4    2/2    3/8 0/1    1/3    0/3	<b>TOTAL</b> 0/9    0/3 2/4    2/2    3/8 0/1    1/3    0/3
---------------------------	---	--

#### Shots by position



7m penalties	2/4	7m penalties	2/3
Fastbreak	0/1	Fastbreak	3/3
Breakthrough	9/14	Breakthrough	5/7
Long dist.	0/0	Long dist.	0/0

#### Shooting statistics

Position	Goals	Sav.	Miss.	Post	Blk.	Total	%
Back (9m)	2	5	1	1	1	10	20
Line (6m)	6	3	0	0	0	9	67
Wing	2	1	0	0	0	3	67
7m penalties	2	1	0	1	0	4	50
Fastbreak	0	1	0	0	0	1	0
Breakthrough	9	3	2	0	0	14	64
<b>Total</b>	<b>21</b>	<b>14</b>	<b>3</b>	<b>2</b>	<b>1</b>	<b>41</b>	<b>51</b>

# Jersey number    Tot. Total shooting    6m 6m (line) shooting    9m 9m shooting    Wng Wing shooting    FB Fastbreak sh.    7m 7m penalty sh.  
 Brk. Breakthrough sh.    LD Long distance sh.    As. Assists    PC Pass clear chance    E7 Earned 7m pen.    TF Technical faults    St. Steals  
 2m 2m punishments    C7. Committed 7m    E2 Earned 2m pun.    YC. Yellow cards    R/B Red/Blue cards    Blk. Blocks    S Starting Line-up

