



23rd IHF Women's Junior (U20) World Championship

Slovenia (Celje and Laško)

Group A, 3. round



Match Team Statistics

Match No. 37

Netherlands 32 - 29 Japan

(16 - 16) (16 - 13)

25.6.2022. 20:30

Attendance: 100

Arena Zlatorog

Referees: Marko Sekulic (SRB) / Vladimir Jovandic (SRB)

Netherlands

#	Surname and name	S	Goals / shots									Attack					Def.			Penalties				TP				
			Tot.	%	9m	6m	Wing	7m	FB	Brk.	LD	As.	PC	E7	E2	TF	St.	C7	Blk	YC	2m	R	B					
1	VAN GALEN Senna																											17:04
2	SCHANSSEMA Bianca																											41:58
6	STEVERINK Romé	S	3/3	100		1/1	1/1		1/1																			4:58
7	LOY Jalisha		4/6	67			0/1																					22:24
9	DALEMAN Roos	S	1/1	100			1/1																					58:25
10	VAN DE RUIT Jessie		1/3	33	0/1																							26:28
11	VELTROP Eline	S																										21:34
14	VAN INGEN Jette		1/1	100	1/1																							3:20
15	VERBRAEKEN Amber																											34:26
17	MOLENAAR Kim	S	10/15	67	6/10				1/2																			40:17
18	BOETERS Fem		1/2	50		0/1	1/1																					28:52
20	KUIPERS Lynn	S	2/5	40	0/3																							56:40
21	MAARSCHALKERWEERD Britt	S																										19:06
22	WOLFS Pipy	S	4/6	67		3/5	1/1																					30:09
23	VAN VLIET Lois		5/6	83			1/2	4/4																				4:43
32	VAN DER HELM Judith																											9:36
	Team / bench																											
	UKUPNO		32/48	67	7/15	4/7	5/7	5/6	1/1	10/12	0/0																	

#	Surname and name	Saves / shots								
		Tot.	%	9m	6m	Wing	7m	FB	Brk.	LD
1	VAN GALEN Senna	1/12	8	1/4	0/1	0/2	0/3		0/2	
2	SCHANSSEMA Bianca	9/27	33	4/9	2/4	1/4	1/3	1/3	0/4	
	TOTAL	10/39	26	5/13	2/5	1/6	1/6	1/3	0/6	0/0

Coach: Ricardo Clarijs

Number of attacks: 54, Efficiency: 59%, Average Duration: 33.35 seconds

Attack by type of defense

	Shots	9m	6m	Wing	TF	E7	E2
On def. 6-0	26/41	7/15	4/7	5/7	8	6	4
Fastbreak	1/1				0	0	0

Defense by type

	Total	9m	6m	Wing	Stl.	C7	2m
Def. 6-0	22/31	8/14	3/5	5/6	2	6	4
Fastbreak	2/3				0	0	0

Attack with superiority / minority / goalkeeper out

	Attack				Reaction		
	Att.	Eff.	Shots	TF	FB	LD	Tot.
6 on 6 (GK out)	3	0%	0/0	3	0/0	0/0	0/0
6 on 4 (GK out)	1	100%	1/1	0	0/0	0/0	0/0
6 on 6	41	63%	26/37	4			
6 on 5	6	67%	4/5	1			
6 on 4	1	100%	1/1	0			
5 on 6	2	0%	0/2	0			

Player superiority / GK out counted at the end of attack (in case it changes during attack)

Defense with superiority / minority / goalkeeper out

	Attack				Reaction		
	Att.	Eff.	Shots	TF	FB	LD	Tot.
7 on 6 (GK out)	4	25%	1/3	1	0/0	0/0	0/0
6 on 6 (GK out)	2	50%	1/2	0	0/0	0/0	0/0
6 on 6	39	49%	19/25	14			
5 on 6	2	0%	0/0	2			
4 on 6	1	100%	1/1	0			
6 on 5	8	88%	7/8	0			

Numbers show attacking numbers of opponent. Lower efficiency of opponent means better defense of this team

Jersey number Tot. Total shooting 6m 6m (line) shooting 9m 9m shooting Wng Wing shooting FB Fastbreak sh. 7m 7m penalty sh.
 Brk. Breakthrough sh. LD Long distance sh. As. Assists PC Pass clear chance E7 Earned 7m pen. TF Technical faults St. Steals
 2m 2m punishments C7. Committed 7m E2 Earned 2m pun. YC. Yellow cards R/B Red/Blue cards Blk. Blocks S Starting Line-up



23rd IHF Women's Junior (U20) World Championship

Slovenia (Celje and Laško)

Group A, 3. round



Match Team Statistics

Match No. 37

Netherlands 32 - 29 Japan

(16 - 16) (16 - 13)

25.6.2022. 20:30

Attendance: 100

Arena Zlatorog

Referees: Marko Sekulic (SRB) / Vladimir Jovandic (SRB)

Shot distribution by player

6 R. Steverink

1/1		
		1/1
1/1		

7 J. Loy

	1/1	
		1/1
1/1		1/1

2 miss.

9 R. Daleman

1/1		

10 J. Van De Ruit

1/1		
	0/1	0/1

11 E. Veltrop

14 J. Van Ingen

1/1		

15 A. Verbraeken

17 K. Molenaar

2/3	1/1	
		1/2
2/2		4/4

2 post 1 miss.

18 F. Boeters

		1/2

20 L. Kuipers

1/2		1/1

2 post

21 B. Maarschalkerweerd

22 P. Wolfs

		1/1
		0/1
1/1		1/2

1/1 lob

23 L. Van Vliet

1/1	0/1	1/1
1/1		2/2

32 J. Van Der Helm

TOTAL

5/6	2/3	2/2
2/2		6/9
7/8	0/1	7/9

4 post 3 miss. 1/1 lob

Saves distribution goalkeepers

1 S. Van Galen

0/2		
		0/3
0/2		1/4

2 B. Schanssema

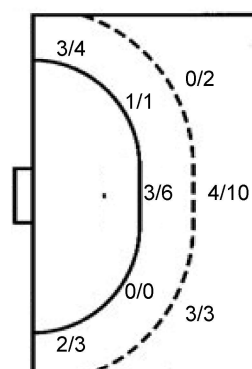
		1/3
0/1	1/1	2/5
0/5	2/3	3/7

TOTAL

0/2		1/3
0/1	1/1	2/8
0/7	2/3	4/11

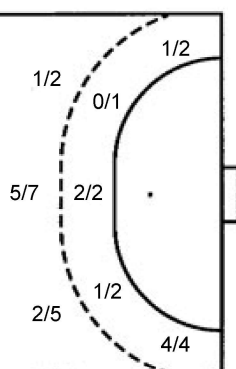
Shots by position

ATTACK



7m penalties 5/6
Fastbreak 1/1
Breakthrough 10/12
Long dist. 0/0

DEFENSE



7m penalties 5/6
Fastbreak 2/3
Breakthrough 6/6
Long dist. 0/0

Shooting statistics

Position	Goals	Sav.	Miss.	Post	Blk.	Total	%
Back (9m)	7	3	1	4	0	15	47
Line (6m)	4	3	0	0	0	7	57
Wing	5	1	1	0	0	7	71
7m penalties	5	1	0	0	0	6	83
Fastbreak	1	0	0	0	0	1	100
Breakthrough	10	1	1	0	0	12	83
Total	32	9	3	4	0	48	67

Jersey number Tot. Total shooting 6m 6m (line) shooting 9m 9m shooting Wng Wing shooting FB Fastbreak sh. 7m 7m penalty sh.
Brk. Breakthrough sh. LD Long distance sh. As. Assists PC Pass clear chance E7 Earned 7m pen. TF Technical faults St. Steals
2m 2m punishments C7. Committed 7m E2 Earned 2m pun. YC. Yellow cards R/B Red/Blue cards Blk. Blocks S Starting Line-up

Handball statistics and livescore by Toma-soft ltd (www.toma-soft.hr)



23rd IHF Women's Junior (U20) World Championship

Slovenia (Celje and Laško)

Group A, 3. round



Match Team Statistics

Match No. 37

Netherlands 32 - 29 Japan

(16 - 16) (16 - 13)

25.6.2022. 20:30

Attendance: 100

Arena Zlatorog

Referees: Marko Sekulic (SRB) / Vladimir Jovandic (SRB)

Japan

#	Surname and name	S	Goals / shots								Attack					Def.			Penalties			TP			
			Tot.	%	9m	6m	Wing	7m	FB	Brk.	LD	As.	PC	E7	E2	TF	St.	C7	Blk	YC	2m		R	B	
3	OTANI Ayano																								2:12
4	KAKEMOTO Shino	S	0/1	0				0/1																	15:01
5	FUKUI Sumire		3/4	75	2/2					0/1	1/1					1	1	1							31:14
6	HAMAGUCHI Mao																								
7	FUJIWARA Hinata	S	3/5	60	1/2	0/1					2/2				1		3		1						31:15
8	YOSHINO Sanju	S	5/5	100				3/3		2/2						1	2					2			57:31
9	MASUZAWA Yuna		1/1	100				1/1																	30:00
10	KITA Kotomi		6/7	86	2/3					4/4				1	1			1							42:31
11	ISHIKAWA Sora	S	7/11	64	3/6	0/1			1/1		3/3			4		5	2	4		1					40:58
13	HIGUCHI Reona	S	0/1	0	0/1													4							18:54
14	HATSUMI Hanako	S	2/2	100		1/1	1/1									1			2						42:50
15	ITO Yui		1/1	100		1/1											2						1		30:00
16	NAKAMURA Rino																								33:46
17	MIZUTANI Akari	S	1/2	50		1/1		0/1															1		17:32
19	HOKAGUCHI Wakana																		1				1		2:35
20	HIGA Kaede																								22:43
	Team / bench																							1	
	UKUPNO		29/40	73	8/14	3/5	5/6	5/6	2/3	6/6	0/0		5	1	6	3	17	3	6	0	1	5	0	0	

#	Surname and name	Saves / shots								
		Tot.	%	9m	6m	Wing	7m	FB	Brk.	LD
16	NAKAMURA Rino	7/30	23	3/7	1/4	1/4	1/5	0/1	1/9	
20	HIGA Kaede	2/11	18	0/3	2/3	0/2	0/1		0/2	
	TOTAL	9/41	22	3/10	3/7	1/6	1/6	1/1	1/11	0/0

Coach: **Shota Arai**

Number of attacks: 56, Efficiency: 52%, Average Duration: 34.42 seconds

Attack by type of defense

	Shots	9m	6m	Wing	TF	E7	E2
On def. 6-0	22/31	8/14	3/5	5/6	17	6	3
Fastbreak	2/3				0	0	0

Defense by type

	Total	9m	6m	Wing	Stl.	C7	2m
Def. 6-0	26/41	7/15	4/7	5/7	3	6	5
Fastbreak	1/1				0	0	0

Attack with superiority / minority / goalkeeper out

	Attack				Reaction		
	Att.	Eff.	Shots	TF	FB	LD	Tot.
7 on 6 (GK out)	4	25%	1/3	1	0/0	0/0	0/0
6 on 6 (GK out)	2	50%	1/2	0	0/0	0/0	0/0
6 on 6	39	49%	19/25	14			
5 on 6	2	0%	0/0	2			
4 on 6	1	100%	1/1	0			
6 on 5	8	88%	7/8	0			

Player superiority / GK out counted at the end of attack (in case it changes during attack)

Defense with superiority / minority / goalkeeper out

	Attack				Reaction		
	Att.	Eff.	Shots	TF	FB	LD	Tot.
6 on 6 (GK out)	3	0%	0/0	3	0/0	0/0	0/0
6 on 4 (GK out)	1	100%	1/1	0	0/0	0/0	0/0
6 on 6	41	63%	26/37	4			
6 on 5	6	67%	4/5	1			
6 on 4	1	100%	1/1	0			
5 on 6	2	0%	0/2	0			

Numbers show attacking numbers of opponent. Lower efficiency of opponent means better defense of this team

Jersey number Tot. Total shooting 6m 6m (line) shooting 9m 9m shooting Wng Wing shooting FB Fastbreak sh. 7m 7m penalty sh.
 Brk. Breakthrough sh. LD Long distance sh. As. Assists PC Pass clear chance E7 Earned 7m pen. TF Technical faults St. Steals
 2m 2m punishments C7. Committed 7m E2 Earned 2m pun. YC. Yellow cards R/B Red/Blue cards Blk. Blocks S Starting Line-up



23rd IHF Women's Junior (U20) World Championship

Slovenia (Celje and Laško)

Group A, 3. round



Match Team Statistics

Match No. 37

Netherlands 32 - 29 Japan

(16 - 16) (16 - 13)

25.6.2022. 20:30

Attendance: 100

Arena Zlatorog

Referees: Marko Sekulic (SRB) / Vladimir Jovandic (SRB)

Shot distribution by player

3 A. Otani	4 S. Kakemoto	5 S. Fukui	6 M. Hamaguchi	7 H. Fujiwara	8 S. Yoshino	9 Y. Masuzawa
		1/1		1/2	1/1	
		0/1		2/3		
	0/1	2/2				1/1
					3/3 lob	
10 K. Kita	11 S. Ishikawa	13 R. Higuchi	14 H. Hatsumi	15 Y. Ito	17 A. Mizutani	19 W. Hokaguchi
	1/1					
	1/1 0/1 2/2					
2/2	2/2 0/1 1/2			1/1		
	1 miss.	0/1	2/2		1/2	

TOTAL

2/2		2/3
1/1	0/1	6/8
7/7	1/3	7/11

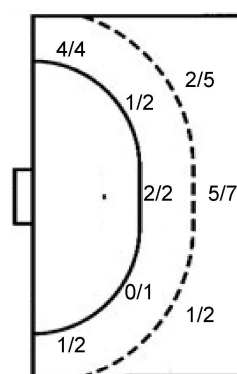
1 miss. 3/3 lob

Saves distribution goalkeepers

16 R. Nakamura	20 K. Higa	TOTAL
1/5 1/2 0/1	0/1 0/1 0/1	1/6 1/3 0/2
0/2		0/2
1/6 1/1 1/5	1/1	3/9
	0/2	1/8 1/1 2/9

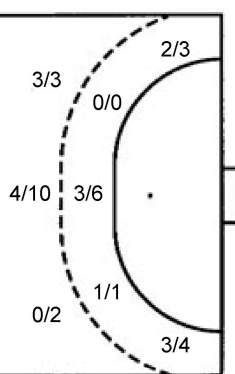
Shots by position

ATTACK



7m penalties	5/6
Fastbreak	2/3
Breakthrough	6/6
Long dist.	0/0

DEFENSE



7m penalties	5/6
Fastbreak	1/1
Breakthrough	10/12
Long dist.	0/0

Shooting statistics

Position	Goals	Sav.	Miss.	Post	Blk.	Total	%
Back (9m)	8	5	1	0	0	14	57
Line (6m)	3	2	0	0	0	5	60
Wing	5	1	0	0	0	6	83
7m penalties	5	1	0	0	0	6	83
Fastbreak	2	1	0	0	0	3	67
Breakthrough	6	0	0	0	0	6	100
Total	29	10	1	0	0	40	73

Jersey number Tot. Total shooting 6m 6m (line) shooting 9m 9m shooting Wng Wing shooting FB Fastbreak sh. 7m 7m penalty sh.
 Brk. Breakthrough sh. LD Long distance sh. As. Assists PC Pass clear chance E7 Earned 7m pen. TF Technical faults St. Steals
 2m 2m punishments C7. Committed 7m E2 Earned 2m pun. YC. Yellow cards R/B Red/Blue cards Blk. Blocks S Starting Line-up

Handball statistics and livescore by Toma-soft ltd (www.toma-soft.hr)



23rd IHF Women's Junior (U20) World Championship

Slovenia (Celje and Laško)

Group A, 3. round



Match Team Statistics

Match No. 37

Netherlands 32 - 29 Japan

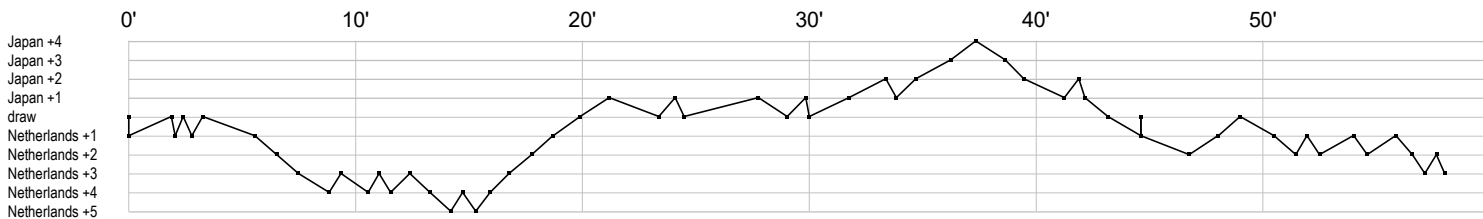
(16 - 16) (16 - 13)

25.6.2022. 20:30

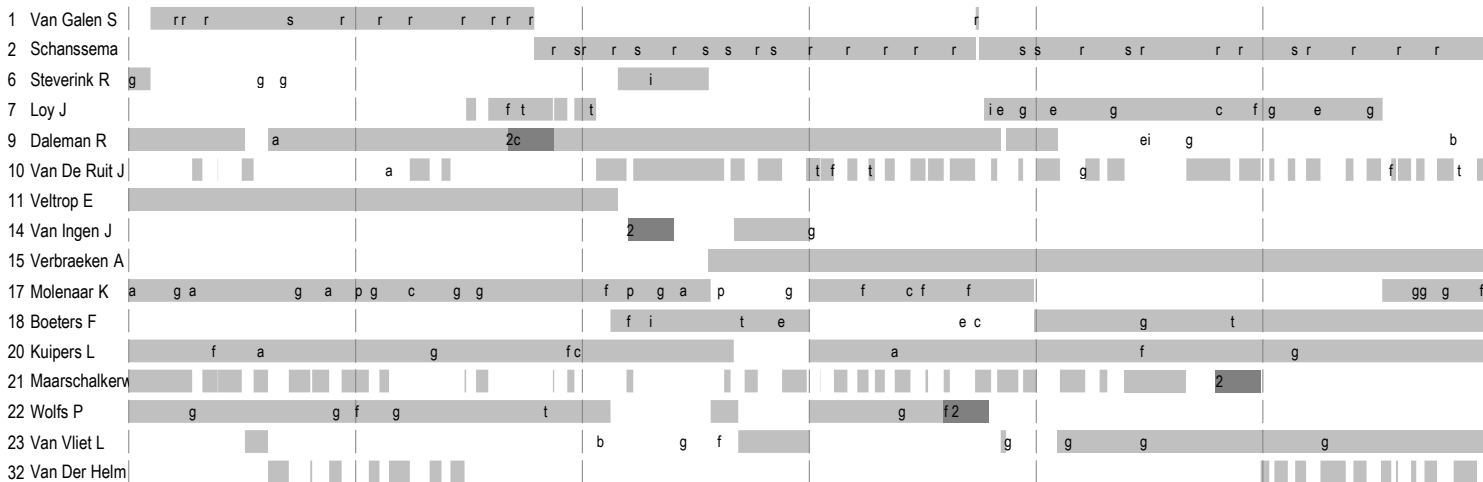
Attendance: 100

Arena Zlatorog

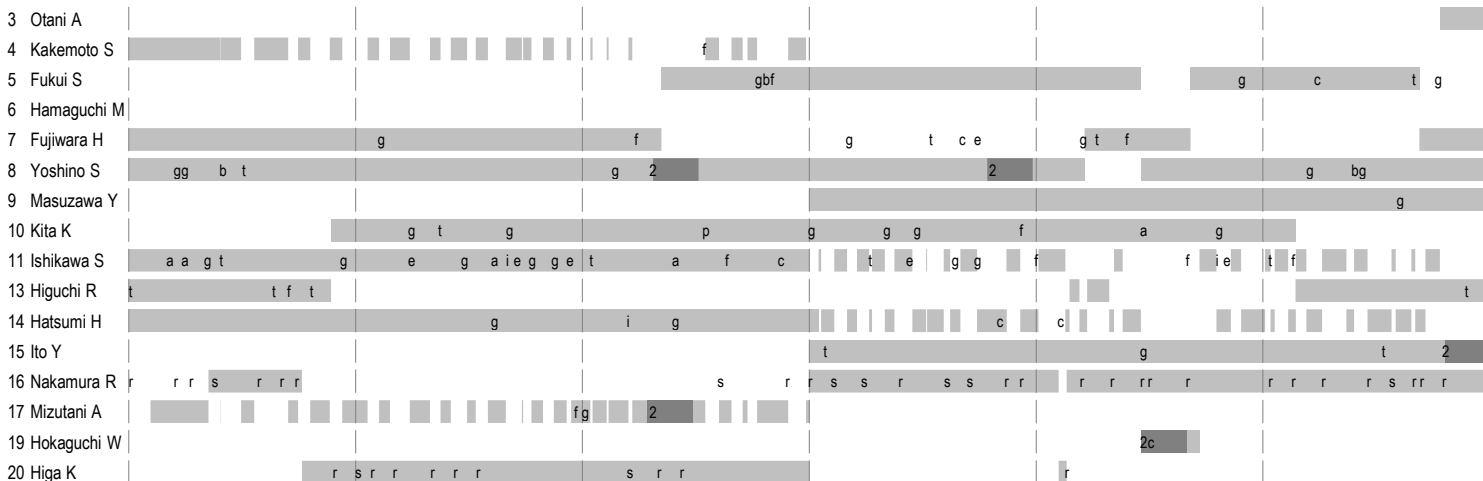
Referees: Marko Sekulic (SRB) / Vladimir Jovandic (SRB)



Netherlands



Japan



In game	g Goal scored	f Missed shot	a Assist	t Technical faults	b Steal
2 2min suspension	e Eearned 7m	c Committed 7m	y Yellow card	r Red Card	k Blue card
i Eearned 2min.	x Block	4 4min suspension	p Pass for clear chance	s Saved shot	r Received goal