



# 23rd IHF Women's Junior (U20) World Championship

Slovenia (Celje and Laško)

Group E, 2. round



Match Team Statistics

Match No. 29

## Czech Republic 25 - 36 Angola

(13 - 16) (12 - 20)

24.6.2022. 12:30

Attendance: 50

Arena Golovec

Referees: Marko Sekulic (SRB) / Vladimir Jovandic (SRB)

### Czech Republic

#	Surname and name	S	Goals / shots								Attack					Def.			Penalties			TP					
			Tot.	%	9m	6m	Wing	7m	FB	Brk.	LD	As.	PC	E7	E2	TF	St.	C7	Blk	YC	2m		R	B			
2	KÖNIGOVÁ Kristýna	S	1/4	25			0/2			0/1							2										21:52
3	MELICHAROVÁ Nikola	S	0/1	0	0/1																						18:09
4	DANKOVÁ Michaela	S	2/3	67	1/2					1/1					2		1	1									21:11
5	FARAŘOVÁ Anežka	S																									0:09
6	KUXOVÁ Natálie	S	4/8	50	1/4					3/4				2	2	1	4										38:24
7	ROUPCOVÁ Claudia		0/1	0			0/1																				12:21
9	VOSTÁRKOVÁ Tereza		1/5	20	0/2					1/2	0/1			1	1		2										22:18
11	HOLENAKOVÁ Denisa		1/2	50	0/1					1/1					1		1										13:35
13	DROZDOVÁ Lucie																										22:40
14	KROFTOVÁ Barbora		2/2	100			2/2								1				1								46:13
16	SPURNÁ Šárka													1													18:43
18	KUBÁLKOVÁ Klára	S	2/4	50			1/3			1/1							1										36:58
21	CHOLEVOVÁ Charlotte		10/15	67	3/8		1/1	4/4		2/2				1	3		2	3									47:12
25	SMEJOVÁ Michaela		1/7	14	0/4			0/1		1/2				1			1	1									26:50
27	MALÁ Michaela		0/1	0							0/1																34:07
30	HEJLOVÁ Štěpánka	S	1/1	100			1/1								1		1	1									39:18
	Team / bench																										
	UKUPNO		25/54	46	5/22	1/1	4/9	4/5	1/2	9/12	1/3			5	8	5	7	9	4	1	1	0	2	0	0		

#	Surname and name	Saves / shots								
		Tot.	%	9m	6m	Wing	7m	FB	Brk.	LD
16	SPURNÁ Šárka	1/14	7	0/3	0/6		0/1	0/1	1/3	
27	MALÁ Michaela	4/26	15	3/16	0/6			0/1	1/3	
	TOTAL	5/40	13	3/19	0/12	0/0	0/1	0/2	2/6	0/0

Coach: Dušan Poloz

Number of attacks: 57, Efficiency: 44%, Average Duration: 31.05 seconds

### Attack by type of defense

	Shots	9m	6m	Wing	TF	E7	E2
On def. 6-0	15/29	5/13	0/0	3/6	5	4	5
On def. 5-1	4/15	0/9	1/1	1/3	4	1	2
Fastbreak	1/2				0	0	0

### Defense by type

	Total	9m	6m	Wing	Stl.	C7	2m
Def. 6-0	18/27	8/14	8/8	0/0	3	1	2
Def. 5-1	11/12	6/7	3/3	0/0	0	0	0
Def. 4-2	3/5	2/4	1/1	0/0	1	0	0
Fastbreak	2/2				0	0	0

### Attack with superiority / minority / goalkeeper out

	Attack				Reaction		
	Att.	Eff.	Shots	TF	FB	LD	Tot.
7 on 6 (GK out)	8	13%	1/6	2	0/0	1/1	1/1
6 on 6	33	48%	16/28	5			
6 on 5	10	50%	5/10	0			
6 on 4	3	67%	2/2	1			
5 on 6	1	100%	1/1	0			
5 on 5	2	0%	0/1	1			

Player superiority / GK out counted at the end of attack (in case it changes during attack)

### Defense with superiority / minority / goalkeeper out

	Attack				Reaction		
	Att.	Eff.	Shots	TF	FB	LD	Tot.
7 on 6 (GK out)	1	0%	0/1	0	0/0	0/1	0/1
6 on 6 (GK out)	5	40%	2/3	2	0/1	1/2	1/3
5 on 6 (GK out)	1	100%	1/1	0	0/0	0/0	0/0
6 on 6	44	66%	29/37	7			
5 on 6	5	60%	3/3	2			
5 on 5	2	50%	1/2	0			

Numbers show attacking numbers of opponent. Lower efficiency of opponent means better defense of this team

# Jersey number Tot. Total shooting 6m 6m (line) shooting 9m 9m shooting Wng Wing shooting FB Fastbreak sh. 7m 7m penalty sh.  
 Brk. Breakthrough sh. LD Long distance sh. As. Assists PC Pass clear chance E7 Earned 7m pen. TF Technical faults St. Steals  
 2m 2m punishments C7. Committed 7m E2 Earned 2m pun. YC. Yellow cards R/B Red/Blue cards Blk. Blocks S Starting Line-up



# 23rd IHF Women's Junior (U20) World Championship

## Slovenia (Celje and Laško)

### Group E, 2. round



#### Match Team Statistics

Match No. 29

### Czech Republic 25 - 36 Angola

(13 - 16) (12 - 20)

24.6.2022. 12:30

Attendance: 50

Arena Golovec

Referees: Marko Sekulic (SRB) / Vladimir Jovandic (SRB)

#### Shot distribution by player

<b>2 K. Kőnigová</b> 1 miss. 0/1 lob 1/1 0/1	<b>3 N. Melicharová</b> 1 miss.	<b>4 M. Daňková</b> 1 miss. 1/1	<b>5 A. Farářová</b>	<b>6 N. Kuxová</b> 1 miss. 3 block 1/1 1/1 1/1	<b>7 C. Roupcová</b> 1 miss.	<b>9 T. Vostárková</b> 2 miss. 0/1 1/1
<b>11 D. Holeňáková</b> 1/1 0/1	<b>13 L. Drozdová</b>	<b>14 B. Kroftová</b> 2/2	<b>18 K. Kubálková</b> 1 post 0/1 lob 2/2	<b>21 C. Cholevová</b> 1 post 2 block 3/3 1/1 3/4 3/4	<b>25 M. Smějová</b> 1 post 2 block 0/1 0/1 1/2	<b>30 Š. Hejlová</b> 1/1

#### TOTAL

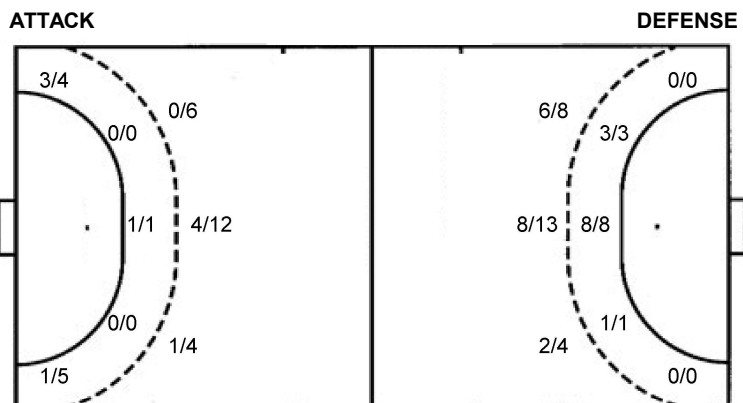
6/7	0/1	3/3
1/2	1/1	1/4
7/9	1/1	5/6

3 post 7 miss. 7 block 0/2 lob

#### Saves distribution goalkeepers

<b>16 Š. Spurná</b> 0/4 0/4 1/1 0/2 0/1 0/1	<b>27 M. Malá</b> 1/7 0/1 1/1 0/1 0/1 0/6	<b>TOTAL</b> 1/11 1/3 1/7 1/8 0/1 0/2 0/6
--	--	--

#### Shots by position



7m penalties	4/5	7m penalties	1/1
Fastbreak	1/2	Fastbreak	2/2
Breakthrough	9/12	Breakthrough	4/7
Long dist.	1/3	Long dist.	1/1

#### Shooting statistics

Position	Goals	Sav.	Miss.	Post	Blk.	Total	%
Back (9m)	5	6	3	1	7	22	23
Line (6m)	1	0	0	0	0	1	100
Wing	4	3	1	1	0	9	44
7m penalties	4	0	0	1	0	5	80
Fastbreak	1	0	1	0	0	2	50
Breakthrough	9	2	1	0	0	12	75
<b>Total</b>	<b>24</b>	<b>11</b>	<b>6</b>	<b>3</b>	<b>7</b>	<b>51</b>	<b>47</b>

# Jersey number Tot. Total shooting 6m 6m (line) shooting 9m 9m shooting Wng Wing shooting FB Fastbreak sh. 7m 7m penalty sh.  
 Brk. Breakthrough sh. LD Long distance sh. As. Assists PC Pass clear chance E7 Earned 7m pen. TF Technical faults St. Steals  
 2m 2m punishments C7. Committed 7m E2 Earned 2m pun. YC. Yellow cards R/B Red/Blue cards Blk. Blocks S Starting Line-up



# 23rd IHF Women's Junior (U20) World Championship

Slovenia (Celje and Laško)

Group E, 2. round



Match Team Statistics

Match No. 29

## Czech Republic 25 - 36 Angola

(13 - 16) (12 - 20)

24.6.2022. 12:30

Attendance: 50

Arena Golovec

Referees: Marko Sekulic (SRB) / Vladimir Jovandic (SRB)

### Angola

#	Surname and name	S	Goals / shots								Attack				Def.		Penalties			TP				
			Tot.	%	9m	6m	Wing	7m	FB	Brk.	LD	As.	PC	E7	E2	TF	St.	C7	Blk		YC	2m	R	B
1	MPANGU Domingas Manuela Samuel	S										1				1								51:36
2	MARIO Liliane Martines	S	7/8	88	2/3	4/4				1/1		2										1		45:42
4	TATI Marcela Gonçalves	S	3/3	100	2/2					1/1					1		1					1		40:52
5	MANUEL Marcia Luzia Neves	S														1								54:00
6	ROSARIO Dolores Palmira Lingombe Do	S	3/4	75	3/4							2			4	1	1							41:18
7	BELO Bernardeth Carla		4/5	80	4/5							1	1				1	1						23:59
9	MUTEMECA Janeth Verónica Homba		1/1	100		1/1																		2:47
11	LOPES Roberta Alexandra Magalhaes														2			1						11:29
12	MIGUEL Cristina Gregório																							5:04
13	MARCOS Regina Lino	S	2/5	40	1/2					0/2	1/1			1			1	1			1			26:53
14	CASTRO Thayany Cacaica Batalha		6/6	100		6/6												3						34:09
18	SALGADO Ruth Lufilo		1/2	50	0/1					1/1												1		6:48
19	EPALANGA Donana Kalunga		1/1	100		1/1																2		14:33
20	PASCOAL Stelvia De Jesus	S	6/10	60	3/6				1/1	2/3		5			2		2					2		36:57
31	PEDRO Lurdes Manuel		0/1	0	0/1																			3:53
80	MASSEU Mbongo Madalena		2/2	100	1/1					1/1					1			1						20:00
	Team / bench														1									
	UKUPNO		36/48	75	16/25	12/12	0/0	1/1	2/2	4/7	1/1	11	0	1	2	11	3	5	7	0	8	0	0	

#	Surname and name	Saves / shots								
		Tot.	%	9m	6m	Wing	7m	FB	Brk.	LD
1	MPANGU Domingas Manuela Samuel	10/30	33	6/11	0/1	3/6	0/3	0/1	1/8	
12	MIGUEL Cristina Gregório	1/5	20		0/1	0/1			1/3	
	TOTAL	11/35	31	6/11	0/1	3/7	0/4	0/1	2/11	0/0

Coach: José Terça Chuma

Number of attacks: 58, Efficiency: 62%, Average Duration: 31.10 seconds

### Attack by type of defense

	Shots	9m	6m	Wing	TF	E7	E2
On def. 6-0	18/27	8/14	8/8	0/0	6	1	2
On def. 5-1	11/12	6/7	3/3	0/0	2	0	0
On def. 4-2	3/5	2/4	1/1	0/0	3	0	0
Fastbreak	2/2				0	0	0

### Defense by type

	Total	9m	6m	Wing	Stl.	C7	2m
Def. 6-0	15/29	5/13	0/0	3/6	3	4	6
Def. 5-1	4/15	0/9	1/1	1/3	0	1	2
Fastbreak	1/2				0	0	0

### Attack with superiority / minority / goalkeeper out

	Attack				Reaction		
	Att.	Eff.	Shots	TF	FB	LD	Tot.
7 on 6 (GK out)	1	0%	0/1	0	0/0	0/1	0/1
6 on 6 (GK out)	5	40%	2/3	2	0/1	1/2	1/3
5 on 6 (GK out)	1	100%	1/1	0	0/0	0/0	0/0
6 on 6	44	66%	29/37	7			
5 on 6	5	60%	3/3	2			
5 on 5	2	50%	1/2	0			

Player superiority / GK out counted at the end of attack (in case it changes during attack)

### Defense with superiority / minority / goalkeeper out

	Attack				Reaction		
	Att.	Eff.	Shots	TF	FB	LD	Tot.
7 on 6 (GK out)	8	13%	1/6	2	0/0	1/1	1/1
6 on 6	33	48%	16/28	5			
6 on 5	10	50%	5/10	0			
6 on 4	3	67%	2/2	1			
5 on 6	1	100%	1/1	0			
5 on 5	2	0%	0/1	1			

Numbers show attacking numbers of opponent. Lower efficiency of opponent means better defense of this team

# Jersey number Tot. Total shooting 6m 6m (line) shooting 9m 9m shooting Wng Wing shooting FB Fastbreak sh. 7m 7m penalty sh.  
 Brk. Breakthrough sh. LD Long distance sh. As. Assists PC Pass clear chance E7 Earned 7m pen. TF Technical faults St. Steals  
 2m 2m punishments C7. Committed 7m E2 Earned 2m pun. YC. Yellow cards R/B Red/Blue cards Blk. Blocks S Starting Line-up



# 23rd IHF Women's Junior (U20) World Championship

## Slovenia (Celje and Laško)

### Group E, 2. round



#### Match Team Statistics

Match No. 29

### Czech Republic 25 - 36 Angola

(13 - 16) (12 - 20)

24.6.2022. 12:30

Attendance: 50

Arena Golovec

Referees: Marko Sekulic (SRB) / Vladimir Jovandic (SRB)

#### Shot distribution by player

<b>2 L. Mario</b> 1/2 1/1 2/2 2/2 lob	<b>4 M. Tati</b> 1/1 2/2	<b>5 M. Manuel</b>	<b>6 D. Rosario</b> 2/2 1/1 1 post	<b>7 B. Belo</b> 1/1 3/3 1 post	<b>9 J. Mutemeca</b> 1/1	<b>11 R. Lopes</b>
<b>13 R. Marcos</b> 1/2 0/1 1 miss.	<b>14 T. Castro</b> 4/4 1/1 1/1	<b>18 R. Salgado</b> 1/1 0/1	<b>19 D. Epalanga</b> 1/1	<b>20 S. Pascoal</b> 1/1 3/3 1 post 1 miss. 1 block	<b>31 L. Pedro</b> 1 miss.	<b>80 M. Masseu</b> 1/1 1/1

#### TOTAL

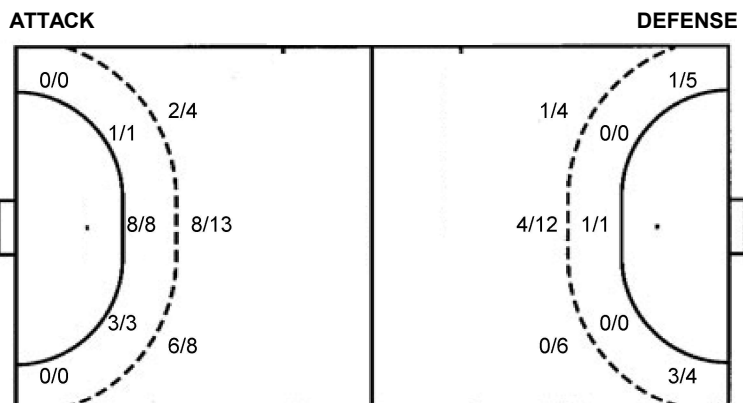
10/11	7/8
2/3	1/1
6/7	2/2

3 post 3 miss. 1 block 2/2 lob

#### Saves distribution goalkeepers

<b>1 D. Mpangu</b> 1/4 1/1 0/3 1/2 0/1 2/3 2/8 0/1 1/6	<b>12 C. Miguel</b> 0/3 1/1 0/1	<b>TOTAL</b> 1/7 1/1 0/3 1/2 0/1 3/4 2/9 0/1 1/6
---	--	---

#### Shots by position



7m penalties 1/1  
Fastbreak 2/2  
Breakthrough 4/7  
Long dist. 1/1

7m penalties 4/5  
Fastbreak 1/2  
Breakthrough 9/12  
Long dist. 1/3

#### Shooting statistics

Position	Goals	Sav.	Miss.	Post	Blk.	Total	%
Back (9m)	16	3	2	3	1	25	64
Line (6m)	12	0	0	0	0	12	100
Wing	0	0	0	0	0	0	0
7m penalties	1	0	0	0	0	1	100
Fastbreak	2	0	0	0	0	2	100
Breakthrough	4	2	1	0	0	7	57
<b>Total</b>	<b>35</b>	<b>5</b>	<b>3</b>	<b>3</b>	<b>1</b>	<b>47</b>	<b>74</b>

# Jersey number Tot. Total shooting 6m 6m (line) shooting 9m 9m shooting Wng Wing shooting FB Fastbreak sh. 7m 7m penalty sh.  
Brk. Breakthrough sh. LD Long distance sh. As. Assists PC Pass clear chance E7 Earned 7m pen. TF Technical faults St. Steals  
2m 2m punishments C7. Committed 7m E2 Earned 2m pun. YC. Yellow cards R/B Red/Blue cards Blk. Blocks S Starting Line-up

Handball statistics and livescore by Toma-soft ltd (www.toma-soft.hr)

