



23rd IHF Women's Junior (U20) World Championship

Slovenia (Celje and Laško)

Final Round, Semifinals



Match Team Statistics
Match No. 100

Netherlands 23 - 32 Norway
(14 - 14) (9 - 18)

1.7.2022. 18:15
Attendance: 150
Arena Zlatorog

Referees: Marko Sekulic (SRB) / Vladimir Jovandic (SRB)

Netherlands

#	Surname and name	S	Goals / shots								Attack					Def.			Penalties			TP		
			Tot.	%	9m	6m	Wing	7m	FB	Brk.	LD	As.	PC	E7	E2	TF	St.	C7	Blk	YC	2m		R	B
1	VAN GALEN Senna																							15:04
2	SCHANSSEMA Bianca	S																						44:27
6	STEVERINK Romé	S	2/3	67			1/2		1/1							1	1			2	1			60:00
7	LOY Jalisha		3/6	50	0/1					3/5					1	1	2			1		1		32:54
9	DALEMAN Roos	S	3/5	60			2/4		1/1											1				23:18
10	VAN DE RUIT Jessie	S	1/3	33	1/2					0/1					2	1				1				29:22
14	VAN INGEN Jette		0/1	0	0/1										1					1				15:05
15	VERBRAEKEN Amber		1/2	50			1/2													1				14:56
16	VLUG Lisa		1/2	50						1/2										2				18:11
17	MOLENAAR Kim	S	7/12	58	4/8			3/3		0/1				2	1					6				36:42
18	BOETERS Fem		1/3	33	1/2	0/1														1				12:22
20	KUIPERS Lynn	S	2/4	50	2/3					0/1				1						1				30:39
21	MAARSCHALKERWEERD Britt																			1				24:02
22	WOLFS Pipy	S	2/3	67		2/3														1		1	1	37:21
23	VAN VLIET Lois																			1				21:37
32	VAN DER HELM Judith																							4:00
Team / bench																							3	1
UKUPNO			23/44	52	8/17	2/4	4/8	3/3	2/2	4/10	0/0	6	4	3	1	17	4	4	0	2	1	0	0	

#	Surname and name	Saves / shots								
		Tot.	%	9m	6m	Wing	7m	FB	Brk.	LD
1	VAN GALEN Senna	3/13	23	1/2	0/1	1/3	1/3		0/4	
2	SCHANSSEMA Bianca	7/29	24	2/9	0/3	5/9	0/1	0/2	0/5	
TOTAL		10/42	24	3/11	0/4	6/12	1/4	0/2	0/9	0/0

Coach: Ricardo Clarijs

Number of attacks: 57, Efficiency: 40%, Average Duration: 30.74 seconds

Attack by type of defense

	Shots	9m	6m	Wing	TF	E7	E2
On def. 6-0	15/32	6/14	2/3	3/7	11	2	1
On def. 5-1	0/0	0/0	0/0	0/0	1	0	0
On def. 3-2-1	3/7	2/3	0/1	1/1	5	1	0
Fastbreak	2/2				0	0	0

Defense by type

	Total	9m	6m	Wing	Stl.	C7	2m
Def. 6-0	10/17	3/6	2/2	3/6	0	3	1
Def. 5-1	2/3	0/1	0/0	0/0	0	0	0
Def. 3-2-1	11/20	5/10	1/1	1/5	4	1	0
Def. press.	4/4	0/0	1/1	2/2	0	0	0
Fastbreak	2/4				0	0	0

Attack with superiority / minority / goalkeeper out

	Attack				Reaction		
	Att.	Eff.	Shots	TF	FB	LD	Tot.
6 on 6	54	41%	22/38	16			
6 on 5	2	50%	1/2	0			
5 on 6	1	0%	0/0	1			

Player superiority / GK out counted at the end of attack (in case it changes during attack)

Defense with superiority / minority / goalkeeper out

	Attack				Reaction		
	Att.	Eff.	Shots	TF	FB	LD	Tot.
6 on 6 (GK out)	1	100%	1/1	0	0/0	0/0	0/0
6 on 6	49	63%	31/42	7			
5 on 6	1	0%	0/1	0			
6 on 5	2	0%	0/2	0			

Numbers show attacking numbers of opponent. Lower efficiency of opponent means better defense of this team

Jersey number Tot. Total shooting 6m 6m (line) shooting 9m 9m shooting Wng Wing shooting FB Fastbreak sh. 7m 7m penalty sh.
Brk. Breakthrough sh. LD Long distance sh. As. Assists PC Pass clear chance E7 Earned 7m pen. TF Technical faults St. Steals
2m 2m punishments C7. Committed 7m E2 Earned 2m pun. YC. Yellow cards R/B Red/Blue cards Blk. Blocks S Starting Line-up

Handball statistics and livescore by Toma-soft ltd (www.toma-soft.hr)



23rd IHF Women's Junior (U20) World Championship

Slovenia (Celje and Laško)

Final Round, Semifinals



Match Team Statistics

Match No. 100

Netherlands 23 - 32 Norway

(14 - 14) (9 - 18)

1.7.2022. 18:15

Attendance: 150

Arena Zlatorog

Referees: Marko Sekulic (SRB) / Vladimir Jovandic (SRB)

Shot distribution by player

6 R. Steverink

1/1		
0/1		
	1/1	

7 J. Loy

1/1	1/1	
1/3		0/1

9 R. Daleman

		1/1
		0/1
1/1		1/1

1 miss.

10 J. Van De Ruit

	1/2	
		0/1

14 J. Van Ingen

0/1		

15 A. Verbraeken

	1/1	

1 miss.

16 L. Vlug

	1/1	

1 post

17 K. Molenaar

2/2		2/2
	0/2	1/1
0/1	1/1	1/1

2 miss.

18 F. Boeters

1/1		
0/1	0/1	

20 L. Kuipers

		1/1
		0/1
	1/1	0/1

21 B.

Maarschalkerweerd		

22 P. Wolfs

	1/1	
1/1		0/1

23 L. Van Vliet

32 J. Van Der Helm

TOTAL

5/5	3/3	4/4
1/6	1/5	1/4
2/3	4/4	2/5

1 post 4 miss.

Saves distribution goalkeepers

1 S. Van Galen

1/3	1/2	0/1
1/5		0/2

2 B. Schanssema

0/2		1/3
	2/3	2/3
1/10	0/3	1/5

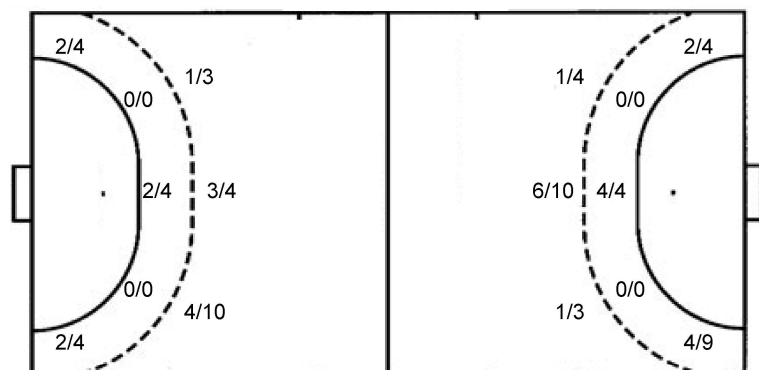
TOTAL

0/2		1/3
1/3	3/5	2/4
2/15	0/3	1/7

Shots by position

ATTACK

DEFENSE



7m penalties 3/3
Fastbreak 2/2
Breakthrough 4/10
Long dist. 0/0

7m penalties 3/4
Fastbreak 2/4
Breakthrough 9/10
Long dist. 0/0

Shooting statistics

Position	Goals	Sav.	Miss.	Post	Blk.	Total	%
Back (9m)	8	7	2	0	0	17	47
Line (6m)	2	2	0	0	0	4	50
Wing	4	2	2	0	0	8	50
7m penalties	3	0	0	0	0	3	100
Fastbreak	2	0	0	0	0	2	100
Breakthrough	4	5	0	1	0	10	40
Total	23	16	4	1	0	44	52

Jersey number Tot. Total shooting 6m 6m (line) shooting 9m 9m shooting Wng Wing shooting FB Fastbreak sh. 7m 7m penalty sh.
Brk. Breakthrough sh. LD Long distance sh. As. Assists PC Pass clear chance E7 Earned 7m pen. TF Technical faults St. Steals
2m 2m punishments C7. Committed 7m E2 Earned 2m pun. YC. Yellow cards R/B Red/Blue cards Blk. Blocks S Starting Line-up

Handball statistics and livescore by Toma-soft ltd (www.toma-soft.hr)



23rd IHF Women's Junior (U20) World Championship

Slovenia (Celje and Laško)

Final Round, Semifinals



Match Team Statistics

Match No. 100

Netherlands 23 - 32 Norway

(14 - 14) (9 - 18)

1.7.2022. 18:15

Attendance: 150

Arena Zlatorog

Referees: Marko Sekulic (SRB) / Vladimir Jovandic (SRB)

Norway

#	Surname and name	S	Goals / shots								Attack					Def.			Penalties			TP				
			Tot.	%	9m	6m	Wing	7m	FB	Brk.	LD	As.	PC	E7	E2	TF	St.	C7	Blk	YC	2m		R	B		
1	UTNE Jenny Sofie Sundt																									0:23
2	AMUNDSEN Susanne Liberg		0/1	0			0/1																			4:06
4	LOKEN Kaja	S																								19:44
6	FREI Avril Mikkelsen		4/5	80				3/4																		5:54
7	ANDERSEN Frida Brandbu	S	1/1	100		1/1									1									1		23:51
8	NYPAN Johanne Halseth		6/7	86	1/2		1/1								1											43:46
10	EGGEN Henriette Espetvedt	S	3/4	75	1/1																					29:57
11	ANDERSEN Martine Karigstad	S	6/14	43	5/12					0/1	1/1				4	1	3									34:36
12	FOSSUM Johanna																									
13	ROHNE Kaja	S	2/2	100		2/2																				41:10
14	IVERSEN Charlotte Koffeid		5/10	50		1/1	3/7			1/2																42:04
15	GALD Maria Bergslien	S	1/2	50			1/2																			55:54
18	VATNE Celina																							1		9:33
20	SATEREN Maja Furu		4/6	67	1/2		1/2			1/1	1/1				1	3	1	1	2							50:16
21	MOSSESTAD Lina Waage																									
35	KROGH June Cecilie	S																								58:46
	Team / bench																									
	UKUPNO		32/52	62	8/17	4/4	6/13	3/4	2/4	9/10	0/0				6	5	4	1	7	1	3	0	1	1	0	0

#	Surname and name	Saves / shots								
		Tot.	%	9m	6m	Wing	7m	FB	Brk.	LD
1	UTNE Jenny Sofie Sundt	0/1	0				0/1			
12	FOSSUM Johanna									
35	KROGH June Cecilie	16/38	42	7/15	2/4	2/6	0/2	0/2	5/9	
	TOTAL	16/39	41	7/15	2/4	2/6	0/3	0/2	5/9	0/0

Coach: Tore Johannessen

Number of attacks: 53, Efficiency: 60%, Average Duration: 34.79 seconds

Attack by type of defense

	Shots	9m	6m	Wing	TF	E7	E2
On def. 6-0	10/17	3/6	2/2	3/6	2	3	1
On def. 5-1	2/3	0/1	0/0	0/0	0	0	0
On def. 3-2-1	11/20	5/10	1/1	1/5	5	1	0
On def. press.	4/4	0/0	1/1	2/2	0	0	0
Fastbreak	2/4				0	0	0

Defense by type

	Total	9m	6m	Wing	Stl.	C7	2m
Def. 6-0	15/32	6/14	2/3	3/7	1	2	1
Def. 3-2-1	3/7	2/3	0/1	1/1	0	1	0
Fastbreak	2/2				0	0	0

Attack with superiority / minority / goalkeeper out

	Attack				Reaction		
	Att.	Eff.	Shots	TF	FB	LD	Tot.
6 on 6 (GK out)	1	100%	1/1	0	0/0	0/0	0/0
6 on 6	49	63%	31/42	7			
5 on 6	1	0%	0/1	0			
6 on 5	2	0%	0/2	0			

Player superiority / GK out counted at the end of attack (in case it changes during attack)

Defense with superiority / minority / goalkeeper out

	Attack				Reaction		
	Att.	Eff.	Shots	TF	FB	LD	Tot.
6 on 6	54	41%	22/38	16			
6 on 5	2	50%	1/2	0			
5 on 6	1	0%	0/0	1			

Numbers show attacking numbers of opponent. Lower efficiency of opponent means better defense of this team

Jersey number Tot. Total shooting 6m 6m (line) shooting 9m 9m shooting Wng Wing shooting FB Fastbreak sh. 7m 7m penalty sh.
 Brk. Breakthrough sh. LD Long distance sh. As. Assists PC Pass clear chance E7 Earned 7m pen. TF Technical faults St. Steals
 2m 2m punishments C7. Committed 7m E2 Earned 2m pun. YC. Yellow cards R/B Red/Blue cards Blk. Blocks S Starting Line-up



23rd IHF Women's Junior (U20) World Championship

Slovenia (Celje and Laško)

Final Round, Semifinals



Match Team Statistics

Match No. 100

Netherlands 23 - 32 Norway

(14 - 14) (9 - 18)

1.7.2022. 18:15

Attendance: 150

Arena Zlatorog

Referees: Marko Sekulic (SRB) / Vladimir Jovandic (SRB)

Shot distribution by player

2 S. Amundsen

		0/1

4 K. Loken

6 A. Frei

2/3		2/2

7 F. Andersen

1/1		

8 J. Nypan

		1/1
1/1		1/1
2/2	1/1	

1 post

10 H. Eggen

1/1		
1/1		1/1

1 miss.

11 M. Andersen

1/1		
	1/4	
3/3		1/1

5 post

13 K. Rohne

1/1	1/1	

14 C. Iversen

1/1		
0/1	1/1	0/1
2/3		1/2

1 miss.

15 M. Gald

		1/1

1 post

18 C. Vatne

20 M. Sateren

		1/2
1/1	1/1	1/1

1 miss.

21 L. Mossestad

TOTAL

2/2		2/3
2/3	2/5	2/4
13/15	3/3	6/7

7 post 3 miss.

Saves distribution goalkeepers

1 J. Utne

		0/1

12 J. Fossum

35 J. Krogh

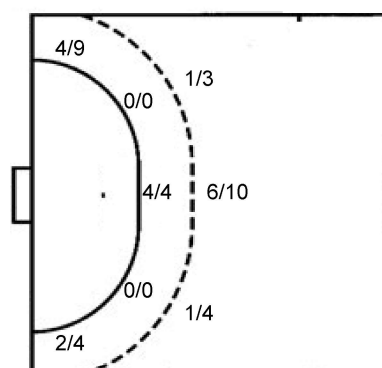
0/5	0/3	0/4
5/6	4/5	3/4
1/3	0/3	3/5

TOTAL

0/5	0/3	0/4
5/6	4/5	3/4
1/3	0/4	3/5

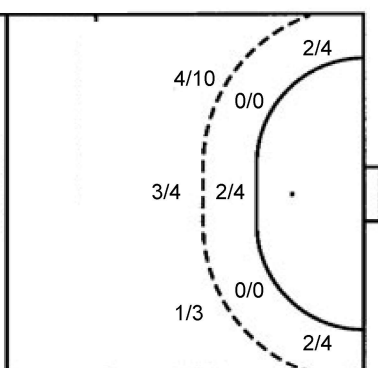
Shots by position

ATTACK



7m penalties 3/4
Fastbreak 2/4
Breakthrough 9/10
Long dist. 0/0

DEFENSE



7m penalties 3/3
Fastbreak 2/2
Breakthrough 4/10
Long dist. 0/0

Shooting statistics

Position	Goals	Sav.	Miss.	Post	Blk.	Total	%
Back (9m)	8	3	1	5	0	17	47
Line (6m)	4	0	0	0	0	4	100
Wing	6	6	0	1	0	13	46
7m penalties	3	1	0	0	0	4	75
Fastbreak	2	0	1	1	0	4	50
Breakthrough	9	0	1	0	0	10	90
Total	32	10	3	7	0	52	62

Jersey number Tot. Total shooting 6m 6m (line) shooting 9m 9m shooting Wng Wing shooting FB Fastbreak sh. 7m 7m penalty sh.
Brk. Breakthrough sh. LD Long distance sh. As. Assists PC Pass clear chance E7 Earned 7m pen. TF Technical faults St. Steals
2m 2m punishments C7. Committed 7m E2 Earned 2m pun. YC. Yellow cards R/B Red/Blue cards Blk. Blocks S Starting Line-up

Handball statistics and livescore by Toma-soft ltd (www.toma-soft.hr)

