



23rd IHF Women's Junior (U20) World Championship

Slovenia (Celje and Laško)

Group D, 1. round



Match Team Statistics

Match No. 9

Norway 26 - 22 Korea

(13 - 11) (13 - 11)

22.6.2022. 15:30

Attendance: 100

Arena Golovec

Referees: Marko Sekulic (SRB) / Vladimir Jovandic (SRB)

Norway

#	Surname and name	S	Goals / shots								Attack					Def.			Penalties			TP			
			Tot.	%	9m	6m	Wing	7m	FB	Brk.	LD	As.	PC	E7	E2	TF	St.	C7	Blk	YC	2m		R	B	
1	UTNE Jenny Sofie Sundt	S																						8:22	
2	AMUNDSEN Susanne Liberg	S	1/1	100					1/1																
4	LOKEN Kaja	S	3/3	100		3/3									1										19:42
6	FREI Avril Mikkelsen	S	0/2	0						0/2			1	2			2								24:35
7	ANDERSEN Frida Brandbu	S	5/8	63	2/4	1/1			1/1	1/2			4			1	5	1	1			1	1		41:19
8	NYPAN Johanne Halseth	S	2/3	67	1/2				1/1				1	2	2	1	4	1							35:25
10	EGGEN Henriette Espetvedt	S	0/2	0	0/1	0/1							2			1	1								27:18
11	ANDERSEN Martine Karigstad		1/2	50	1/2								2			2	1								17:30
13	ROHNE Kaja		1/1	100		1/1									1			1					2		42:00
14	IVERSEN Charlotte Koffeid		2/3	67		1/1	1/2						1												9:07
15	GALD Maria Bergslien		3/3	100			2/2		1/1								1	1					1		50:04
17	MIDTFJELD Rikke		4/6	67			4/6							1	1	1							2		52:13
18	VATNE Celina		0/1	0	0/1																				1:55
20	SATEREN Maja Furu		4/8	50	1/3			3/3	0/1	0/1			3				1	1					1		33:15
21	MOSSESTAD Lina Waage																								
35	KROGH June Cecilie																								57:15
	Team / bench																								
	UKUPNO		26/43	60	5/13	6/7	7/10	3/3	4/5	1/5	0/0		14	4	3	5	17	5	3	0		1	7	0	0

Goalkeepers		Saves / shots									
#	Surname and name	Tot.	%	9m	6m	Wing	7m	FB	Brk.	LD	
1	UTNE Jenny Sofie Sundt	5/14	36	0/1	0/1	2/5			3/7		
35	KROGH June Cecilie	6/19	32	2/2	0/1	2/6	1/1	0/1	1/8		
	TOTAL	11/33	33	2/3	0/2	4/11	1/1	0/1	4/15	0/0	

Coach: Tore Johannessen

Number of attacks: 58, Efficiency: 45%, Average Duration: 26.66 seconds

Attack by type of defense

	Shots	9m	6m	Wing	TF	E7	E2
On def. 6-0	12/21	3/8	2/2	6/8	11	2	3
On def. 5-1	7/14	2/5	4/5	1/2	6	1	2
Fastbreak	4/5				0	0	0

Defense by type

	Total	9m	6m	Wing	Stl.	C7	2m
Def. 6-0	21/36	1/6	2/2	7/13	5	3	7
Fastbreak	1/1				0	0	0

Attack with superiority / minority / goalkeeper out

	Attack				Reaction		
	Att.	Eff.	Shots	TF	FB	LD	Tot.
7 on 6 (GK out)	1	0%	0/1	0	0/0	0/0	0/0
7 on 4 (GK out)	2	50%	1/2	0	0/0	0/0	0/0
6 on 6 (GK out)	2	0%	0/0	2	0/0	0/0	0/0
6 on 4 (GK out)	1	100%	1/1	0	0/0	0/0	0/0
6 on 6	39	44%	17/30	9			
6 on 5	6	67%	4/4	2			
5 on 6	7	43%	3/3	4			

Player superiority / GK out counted at the end of attack (in case it changes during attack)

Defense with superiority / minority / goalkeeper out

	Attack				Reaction		
	Att.	Eff.	Shots	TF	FB	LD	Tot.
6 on 6 (GK out)	1	0%	0/1	0	0/0	0/0	0/0
6 on 6	39	41%	16/26	13			
5 on 6	4	50%	2/2	2			
4 on 6	1	0%	0/1	0			
7 on 5 (GK out)	1	100%	1/1	0	0/0	0/0	0/0
6 on 5	11	18%	2/6	5			
4 on 5	1	0%	0/1	0			
6 on 4	1	100%	1/1	0			

Numbers show attacking numbers of opponent. Lower efficiency of opponent means better defense of this team

Jersey number Tot. Total shooting 6m 6m (line) shooting 9m 9m shooting Wng Wing shooting FB Fastbreak sh. 7m 7m penalty sh.
 Brk. Breakthrough sh. LD Long distance sh. As. Assists PC Pass clear chance E7 Earned 7m pen. TF Technical faults St. Steals
 2m 2m punishments C7. Committed 7m E2 Earned 2m pun. YC. Yellow cards R/B Red/Blue cards Blk. Blocks S Starting Line-up



23rd IHF Women's Junior (U20) World Championship

Slovenia (Celje and Laško)

Group D, 1. round



Match Team Statistics

Match No. 9

Norway 26 - 22 Korea

(13 - 11) (13 - 11)

22.6.2022. 15:30

Attendance: 100

Arena Golovec

Referees: Marko Sekulic (SRB) / Vladimir Jovandic (SRB)

Shot distribution by player

2 S. Amundsen

1/1		

4 K. Loken

		1/1
1/1		1/1

6 A. Frei

		0/1

1 miss.

7 F. Andersen

2/3		1/1
1/1	0/1	1/1

1 post

8 J. Nypan

1/1		
		1/2

10 H. Eggen

0/2		

11 M. Andersen

1/2		

13 K. Rohne

1/1		

14 C. Iversen

1/1		1/1

1 post

15 M. Gald

		2/2

1/1 lob

17 R. Midtfjeld

1/1		
		0/1
2/2		

1/2 lob

18 C. Vatne

1 post

20 M. Sateren

3/3		
	0/1	1/2

1 post 1 miss.

21 L. Mossestad

TOTAL

8/11		4/4
		0/2
7/8	0/2	5/7

4 post 2 miss. 2/3 lob

Saves distribution goalkeepers

1 J. Utne

0/1	2/4	0/3
1/2		1/1
1/2		0/1

35 J. Krogh

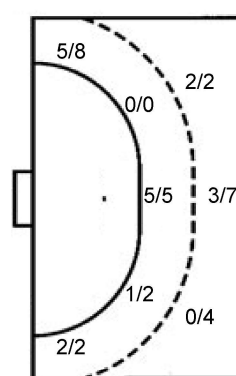
	1/1	1/2
1/2		1/1
1/7	0/2	0/2

TOTAL

0/1	3/5	1/5
2/4		2/2
2/9	0/2	0/3

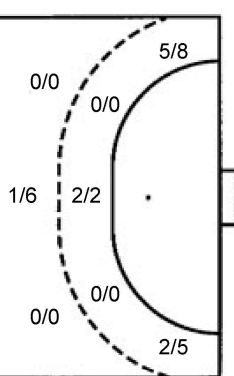
Shots by position

ATTACK



7m penalties 3/3
Fastbreak 4/5
Breakthrough 1/5
Long dist. 0/0

DEFENSE



7m penalties 0/2
Fastbreak 1/1
Breakthrough 11/15
Long dist. 0/0

Shooting statistics

Position	Goals	Sav.	Miss.	Post	Blk.	Total	%
Back (9m)	5	5	1	2	0	13	38
Line (6m)	6	1	0	0	0	7	86
Wing	7	2	0	1	0	10	70
7m penalties	3	0	0	0	0	3	100
Fastbreak	4	0	0	1	0	5	80
Breakthrough	1	3	1	0	0	5	20
Total	26	11	2	4	0	43	60

Jersey number Tot. Total shooting 6m 6m (line) shooting 9m 9m shooting Wng Wing shooting FB Fastbreak sh. 7m 7m penalty sh.
Brk. Breakthrough sh. LD Long distance sh. As. Assists PC Pass clear chance E7 Earned 7m pen. TF Technical faults St. Steals
2m 2m punishments C7. Committed 7m E2 Earned 2m pun. YC. Yellow cards R/B Red/Blue cards Blk. Blocks S Starting Line-up

Handball statistics and livescore by Toma-soft ltd (www.toma-soft.hr)



23rd IHF Women's Junior (U20) World Championship

Slovenia (Celje and Laško)

Group D, 1. round



Match Team Statistics

Match No. 9

Norway 26 - 22 Korea

(13 - 11) (13 - 11)

22.6.2022. 15:30

Attendance: 100

Arena Golovec

Referees: Marko Sekulic (SRB) / Vladimir Jovandic (SRB)

Korea

#	Surname and name	S	Goals / shots								Attack				Def.			Penalties				TP										
			Tot.	%	9m	6m	Wing	7m	FB	Brk.	LD	As.	PC	E7	E2	TF	St.	C7	Blk	YC	2m		R	B								
7	LEE Wonjung	S	6/7	86			5/6								1/1																	45:16
9	LEE Hanju	S	1/3	33			0/1								1/2																7:32	
11	LEE Seulki	S																													0:03	
12	LEE Juhyun	S																													2:00	
13	PAK Eunso	S	2/2	100		2/2											1	1		1											22:57	
14	KO Hyeonso	S																														
16	LEE Gaeun	S																													55:07	
17	YEON Jihyun																1														48:15	
20	JI Eunhye		2/3	67			0/1			1/1	1/1																				42:34	
23	LEE Jaeyoung		3/5	60	0/1						3/4					1	2		1	4	1										57:00	
24	SHIN Dabeen																															
26	PARK Jiho																	1	1												2:54	
27	JEON Jiyeon		1/1	100	1/1												1			1	2										19:34	
29	KIM Yeonwoo																		1	1											1:36	
33	LEE Yeonsong		5/12	42	0/4		0/1				5/7					11	4		1	4	2	1									57:30	
34	CHOI Hansol		2/6	33			2/4	0/2								1			1	1	1										57:42	
	Team / bench																															
	UKUPNO		22/39	56	1/6	2/2	7/13	0/2	1/1	11/15	0/0					14	9	3	6	20	4	3	0	0	0	5	0	0				

#	Surname and name	Saves / shots								
		Tot.	%	9m	6m	Wing	7m	FB	Brk.	LD
12	LEE Juhyun	0/1	0				0/1			
16	LEE Gaeun	11/36	31	5/10	1/7	2/9	0/2	0/4	3/4	
	TOTAL	11/37	30	5/10	1/7	2/9	0/3	0/4	3/4	0/0

Coach: Seong Ok Oh

Number of attacks: 59, Efficiency: 37%, Average Duration: 36.33 seconds

Attack by type of defense

	Shots	9m	6m	Wing	TF	E7	E2
On def. 6-0	21/36	1/6	2/2	7/13	20	3	6
Fastbreak	1/1				0	0	0

Defense by type

	Total	9m	6m	Wing	Stl.	C7	2m
Def. 6-0	12/21	3/8	2/2	6/8	2	2	3
Def. 5-1	7/14	2/5	4/5	1/2	2	1	2
Fastbreak	4/5				0	0	0

Attack with superiority / minority / goalkeeper out

	Attack				Reaction		
	Att.	Eff.	Shots	TF	FB	LD	Tot.
6 on 6 (GK out)	1	0%	0/1	0	0/0	0/0	0/0
6 on 6	39	41%	16/26	13			
5 on 6	4	50%	2/2	2			
4 on 6	1	0%	0/1	0			
7 on 5 (GK out)	1	100%	1/1	0	0/0	0/0	0/0
6 on 5	11	18%	2/6	5			
4 on 5	1	0%	0/1	0			
6 on 4	1	100%	1/1	0			

Player superiority / GK out counted at the end of attack (in case it changes during attack)

Defense with superiority / minority / goalkeeper out

	Attack				Reaction		
	Att.	Eff.	Shots	TF	FB	LD	Tot.
7 on 6 (GK out)	1	0%	0/1	0	0/0	0/0	0/0
7 on 4 (GK out)	2	50%	1/2	0	0/0	0/0	0/0
6 on 6 (GK out)	2	0%	0/0	2	0/0	0/0	0/0
6 on 4 (GK out)	1	100%	1/1	0	0/0	0/0	0/0
6 on 6	39	44%	17/30	9			
6 on 5	6	67%	4/4	2			
5 on 6	7	43%	3/3	4			

Numbers show attacking numbers of opponent. Lower efficiency of opponent means better defense of this team

Jersey number Tot. Total shooting 6m 6m (line) shooting 9m 9m shooting Wng Wing shooting FB Fastbreak sh. 7m 7m penalty sh.
 Brk. Breakthrough sh. LD Long distance sh. As. Assists PC Pass clear chance E7 Earned 7m pen. TF Technical faults St. Steals
 2m 2m punishments C7. Committed 7m E2 Earned 2m pun. YC. Yellow cards R/B Red/Blue cards Blk. Blocks S Starting Line-up



23rd IHF Women's Junior (U20) World Championship

Slovenia (Celje and Laško)

Group D, 1. round



Match Team Statistics

Match No. 9

Norway 26 - 22 Korea

(13 - 11) (13 - 11)

22.6.2022. 15:30

Attendance: 100

Arena Golovec

Referees: Marko Sekulic (SRB) / Vladimir Jovandic (SRB)

Shot distribution by player

7 W. Lee	9 H. Lee	11 S. Lee	13 E. Pak	14 H. Ko	17 J. Yeon	20 E. Ji
1/2 3/3	0/1		2/2			1/1
1/1	0/1 1/1					1/1
1/1 lob						1 post
23 J. Lee	24 D. Shin	26 J. Park	27 J. Jeon	29 Y. Kim	33 Y. Lee	34 H. Choi
0/1			1/1		1/3 1/1	1/1
1/1					0/2	0/1
2/3					1/1 1/1 1/1	1/1
					2 miss. 1 block	2 post 0/1 lob

TOTAL

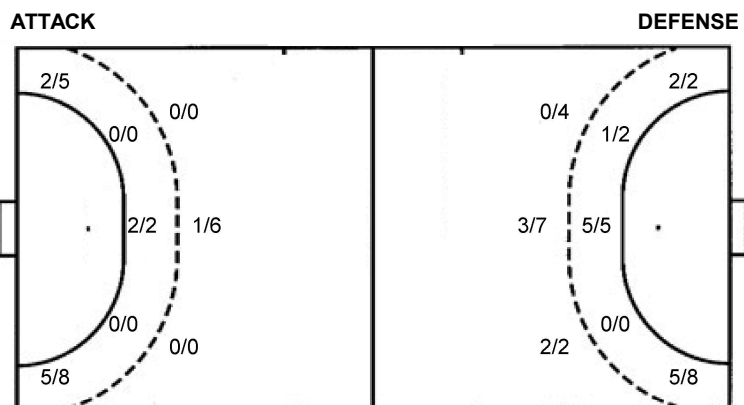
1/1	2/5	4/5
2/4		0/2
7/9	2/2	3/3

3 post 2 miss. 1 block 1/2 lob

Saves distribution goalkeepers

12 J. Lee	16 G. Lee	TOTAL
	3/11 0/4	3/11 0/4
	2/2	2/2
0/1	1/8 2/2 2/6	1/8 2/2 2/7

Shots by position



7m penalties 0/2
 Fastbreak 1/1
 Breakthrough 11/15
 Long dist. 0/0

7m penalties 3/3
 Fastbreak 4/5
 Breakthrough 1/5
 Long dist. 0/0

Shooting statistics

Position	Goals	Sav.	Miss.	Post	Blk.	Total	%
Back (9m)	1	2	2	0	1	6	17
Line (6m)	2	0	0	0	0	2	100
Wing	7	4	0	2	0	13	54
7m penalties	0	1	0	1	0	2	0
Fastbreak	1	0	0	0	0	1	100
Breakthrough	11	4	0	0	0	15	73
Total	22	11	2	3	1	39	56

Jersey number Tot. Total shooting 6m 6m (line) shooting 9m 9m shooting Wng Wing shooting FB Fastbreak sh. 7m 7m penalty sh.
 Brk. Breakthrough sh. LD Long distance sh. As. Assists PC Pass clear chance E7 Earned 7m pen. TF Technical faults St. Steals
 2m 2m punishments C7. Committed 7m E2 Earned 2m pun. YC. Yellow cards R/B Red/Blue cards Blk. Blocks S Starting Line-up



23rd IHF Women's Junior (U20) World Championship

Slovenia (Celje and Laško)

Group D, 1. round

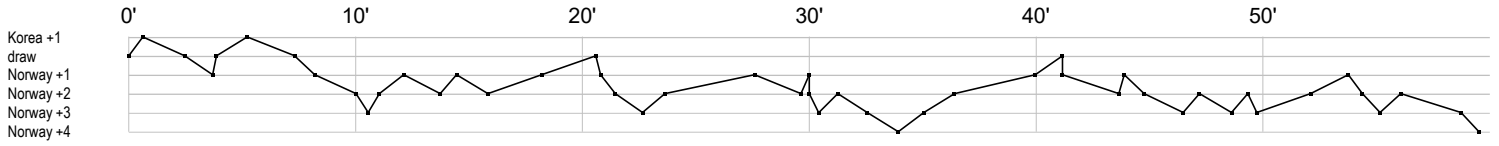


Match Team Statistics
Match No. 9

Norway 26 - 22 Korea
(13 - 11) (13 - 11)

22.6.2022. 15:30
Attendance: 100
Arena Golovec

Referees: Marko Sekulic (SRB) / Vladimir Jovandic (SRB)



Norway

1 Utne J	r s r r	r r s r s	r s r s r		
2 Amundsen S		g			
4 Loken K			t	g	g g
6 Frei A		t	t p a	f p f	
7 Andersen F		g a y g f f	t a g t	t g c2	g t a a f b t
8 Nypan J	e	b p g t t f		t t e i	g a p
10 Eggen H			f i a	t	a f
11 Andersen M	t	ba		a t g f	
13 Rohne K		2c			g i 2
14 Iversen C			f g		a g
15 Gald M		c2	g	g b	g
17 Midtfield R	g g	ie	g	f	2 f g t 2
18 Vatne C			f		g
20 Sateren M	g b f t a f	a g		g f 2	g f
21 Mossestad L					
35 Krogh J			r s r r r r	r r s r s r s r	r r r s

Korea

7 Lee W	g		g p	f g t g	g t t g p t
9 Lee H			c2 f	g t	f
11 Lee S					
12 Lee J			r		
13 Pak E	c		g	g t i	
14 Ko H					
16 Lee G	r r s r r r r s r s s	s r r r r r r r r r	r r s s s s	r r r r s r s r r	r r r r
17 Yeon J			a t		
20 Ji E				g t	f g
23 Lee J	f p b g	p	t 2	t g	i 2 a t g t
24 Shin D					
26 Park J			ei		
27 Jeon J	t g t p i				
29 Kim Y					ie
33 Lee Y	a g a t t a a f f g	t p a a f a f f a b a p b	g p a 2c	g f	i t g a p
34 Choi H	f e f	a t b	g2	f	g f

In game	g Goal scored	f Missed shot	a Assist	t Technical faults	b Steal
2 2min suspension	e Earned 7m	c Committed 7m	y Yellow card	r Red Card	k Blue card
i Earned 2min.	x Block	4 4min suspension	p Pass for clear chance	s Saved shot	r Received goal