



23rd IHF Women's Junior (U20) World Championship

Slovenia (Celje and Laško)

Group A, 1. round



Match Team Statistics

Match No. 3

Slovakia 17 - 29 Japan

(11 - 12) (6 - 17)

22.6.2022. 14:30

Attendance: 150

Arena Zlatorog

Referees: Ante Mikelic (CRO) / Petar Paradina (CRO)

Shot distribution by player

5 R. Kucsera

7 D. Vargová

4/6	1/1	1/1

1 post 2 miss.

9 V. Györiová

1/1		
0/1		

1 miss.

10 O. Ščipová

		2/2
1/1	0/1	

2 post 3 miss.

13 E. Lukáčová

1/1		

1 post 1 miss.

15 S. Zsákovics

1 post

17 P. Hornyák

21 D. Bačenková

22 V. Zlatinská

23 A. Dvorščáková

0/1	0/1	
0/1		

1 miss. 1/1 lob

25 M. Péntzes

		1/2
		1/2

1 post

27 N. Dmytrenko

1/1		
0/1		

1/2 lob

29 P. Pálová

1/1		0/1

TOTAL

2/2		3/4
0/2	0/1	1/2
7/11	1/2	1/2

6 post 8 miss. 2/3 lob

Saves distribution goalkeepers

12 K. Kusyová

16 S. Bronišová

19 V. Voržáčková

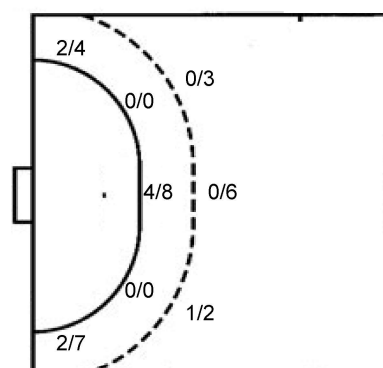
1/3		1/1
3/6	1/2	0/1
4/18	2/2	0/6

TOTAL

1/3		1/1
3/6	1/2	0/1
4/18	2/2	0/6

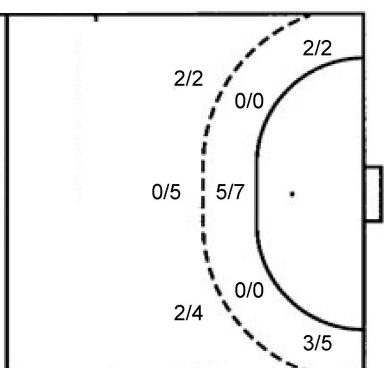
Shots by position

ATTACK



7m penalties 5/9
Fastbreak 0/0
Breakthrough 2/2
Long dist. 1/2

DEFENSE



7m penalties 4/5
Fastbreak 7/7
Breakthrough 3/6
Long dist. 1/1

Shooting statistics

Position	Goals	Sav.	Miss.	Post	Blk.	Total	%
Back (9m)	1	3	4	3	0	11	9
Line (6m)	4	3	1	0	0	8	50
Wing	4	4	1	2	0	11	36
7m penalties	5	2	1	1	0	9	56
Fastbreak	0	0	0	0	0	0	0
Breakthrough	2	0	0	0	0	2	100
Total	16	12	7	6	0	41	39

Jersey number Tot. Total shooting 6m 6m (line) shooting 9m 9m shooting Wng Wing shooting FB Fastbreak sh. 7m 7m penalty sh.
Brk. Breakthrough sh. LD Long distance sh. As. Assists PC Pass clear chance E7 Earned 7m pen. TF Technical faults St. Steals
2m 2m punishments C7. Committed 7m E2 Earned 2m pun. YC. Yellow cards R/B Red/Blue cards Blk. Blocks S Starting Line-up

Handball statistics and livescore by Toma-soft ltd (www.toma-soft.hr)



23rd IHF Women's Junior (U20) World Championship

Slovenia (Celje and Laško)

Group A, 1. round



Match Team Statistics

Match No. 3

Slovakia 17 - 29 Japan

(11 - 12) (6 - 17)

22.6.2022. 14:30

Attendance: 150

Arena Zlatorog

Referees: Ante Mikelic (CRO) / Petar Paradina (CRO)

Japan

#	Surname and name	S	Goals / shots								Attack				Def.			Penalties			TP				
			Tot.	%	9m	6m	Wing	7m	FB	Brk.	LD	As.	PC	E7	E2	TF	St.	C7	Blk	YC		2m	R	B	
3	OTANI Ayano																							6:41	
4	KAKEMOTO Shino		2/2	100			2/2																	13:44	
5	FUKUI Sumire		1/1	100	1/1																		2	18:36	
6	HAMAGUCHI Mao		2/2	100					2/2															6:12	
7	FUJIWARA Hinata	S	1/3	33	1/3																			25:55	
8	YOSHINO Sanju	S	4/7	57	0/2		3/4		1/1															60:00	
9	MASUZAWA Yuna	S	1/1	100					1/1															30:00	
10	KITA Kotomi	S	5/7	71	0/1	1/2		2/2		1/1	1/1													43:16	
11	ISHIKAWA Sora		6/11	55	1/3	1/1	0/1	2/3	1/1	1/2														33:52	
13	HIGUCHI Reona		2/2	100	1/1				1/1														1	16:44	
14	HATSUMI Hanako	S	0/1	0		0/1																	1	42:36	
15	ITO Yui	S	3/3	100		3/3																		30:00	
16	NAKAMURA Rino	S																						49:30	
17	MIZUTANI Akari		1/1	100					1/1															26:59	
19	HOKAGUCHI Wakana		1/3	33						1/3														7:19	
20	HIGA Kaede																							8:36	
	Team / bench																								
	UKUPNO		29/44	66	4/11	5/7	5/7	4/5	7/7	3/6	1/1														

#	Surname and name	Saves / shots								
		Tot.	%	9m	6m	Wing	7m	FB	Brk.	LD
16	NAKAMURA Rino	8/21	38	2/3	1/4	3/6	2/6		0/2	
20	HIGA Kaede	4/6	67	1/1	2/3	1/1	0/1			
	TOTAL	12/27	44	3/4	3/7	4/7	2/7	0/0	0/2	0/0

Coach: Shota Arai

Number of attacks: 55, Efficiency: 53%, Average Duration: 32.37 seconds

Attack by type of defense

	Shots	9m	6m	Wing	TF	E7	E2
On def. 6-0	12/25	4/11	4/6	3/5	13	5	2
On def. 5-1	5/6	0/0	1/1	2/2	2	0	1
Fastbreak	7/7				0	0	0

Defense by type

	Total	9m	6m	Wing	Stl.	C7	2m
Def. 6-0	6/20	1/7	2/4	3/9	4	4	3
Def. 4-2	5/12	0/4	2/4	1/2	1	5	1
Fastbreak	0/0				0	0	0

Attack with superiority / minority / goalkeeper out

	Attack				Reaction		
	Att.	Eff.	Shots	TF	FB	LD	Tot.
7 on 6 (GK out)	2	50%	1/1	1	0/0	1/2	1/2
6 on 6 (GK out)	3	33%	1/2	1	0/0	0/0	0/0
6 on 6	38	47%	18/26	12			
5 on 6	2	50%	1/1	1			
6 on 5	10	80%	8/10	0			

Player superiority / GK out counted at the end of attack (in case it changes during attack)

Defense with superiority / minority / goalkeeper out

	Attack				Reaction		
	Att.	Eff.	Shots	TF	FB	LD	Tot.
6 on 6 (GK out)	3	33%	1/2	1	1/1	0/0	1/1
6 on 6	39	28%	11/28	11			
6 on 5	7	57%	4/7	0			
5 on 6	4	25%	1/4	0			

Numbers show attacking numbers of opponent. Lower efficiency of opponent means better defense of this team

Jersey number Tot. Total shooting 6m 6m (line) shooting 9m 9m shooting Wng Wing shooting FB Fastbreak sh. 7m 7m penalty sh.
 Brk. Breakthrough sh. LD Long distance sh. As. Assists PC Pass clear chance E7 Earned 7m pen. TF Technical faults St. Steals
 2m 2m punishments C7. Committed 7m E2 Earned 2m pun. YC. Yellow cards R/B Red/Blue cards Blk. Blocks S Starting Line-up



23rd IHF Women's Junior (U20) World Championship

Slovenia (Celje and Laško)

Group A, 1. round



Match Team Statistics

Match No. 3

Slovakia 17 - 29 Japan

(11 - 12) (6 - 17)

22.6.2022. 14:30

Attendance: 150

Arena Zlatorog

Referees: Ante Mikelic (CRO) / Petar Paradina (CRO)

Shot distribution by player

3 A. Otani [] [] [] [] [] [] [] [] []	4 S. Kakemoto [] [] [] [] [] [] 1/1 [] 1/1	5 S. Fukui [] [] [] [] [] [] 1/1 [] []	6 M. Hamaguchi [] [] [] [] [] [] 2/2 [] []	7 H. Fujiwara [] [] [] [] [] [] [] 0/1 1/1 1 miss.	8 S. Yoshino 2/2 [] [] 1/2 0/1 [] [] [] [] 1 post 1/1 lob	9 Y. Masuzawa [] [] [] [] [] [] 1/1 [] []
10 K. Kita [] [] [] [] [] 1/1 2/3 [] 2/2 1 block	11 S. Ishikawa 0/1 [] 0/1 0/1 1/1 [] 4/6 [] 1/1	13 R. Higuchi [] [] [] [] [] [] 1/1 [] []	14 H. Hatsumi [] [] [] [] [] [] 0/1 [] []	15 Y. Ito [] [] [] [] [] [] 3/3 [] []	17 A. Mizutani [] [] [] [] [] [] [] [] [] 1/1 lob	19 W. Hokaguchi [] [] [] [] [] [] 1/2 0/1 []

TOTAL

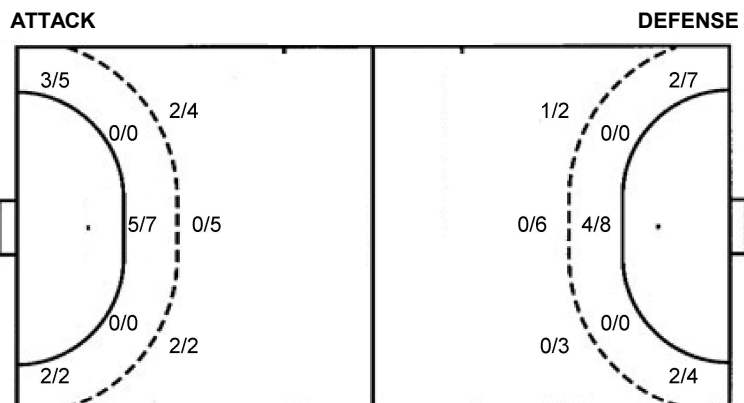
2/3	[]	0/1
3/6	1/2	1/1
14/18	0/2	6/6

1 post 1 miss. 1 block 2/2 lob

Saves distribution goalkeepers

16 R. Nakamura 0/2 [] 1/4 2/2 1/1 1/2 3/9 0/1 []	20 K. Higa [] [] [] [] [] [] 1/2 1/1 1/2	TOTAL 0/2 [] 1/4 2/2 1/1 1/2 4/11 1/2 1/2
--	--	--

Shots by position



7m penalties	4/5	7m penalties	5/9
Fastbreak	7/7	Fastbreak	0/0
Breakthrough	3/6	Breakthrough	2/2
Long dist.	1/1	Long dist.	1/2

Shooting statistics

Position	Goals	Sav.	Miss.	Post	Blk.	Total	%
Back (9m)	4	4	1	1	1	11	36
Line (6m)	5	2	0	0	0	7	71
Wing	5	2	0	0	0	7	71
7m penalties	4	1	0	0	0	5	80
Fastbreak	7	0	0	0	0	7	100
Breakthrough	3	3	0	0	0	6	50
Total	28	12	1	1	1	43	65

Jersey number Tot. Total shooting 6m 6m (line) shooting 9m 9m shooting Wng Wing shooting FB Fastbreak sh. 7m 7m penalty sh.
 Brk. Breakthrough sh. LD Long distance sh. As. Assists PC Pass clear chance E7 Earned 7m pen. TF Technical faults St. Steals
 2m 2m punishments C7. Committed 7m E2 Earned 2m pun. YC. Yellow cards R/B Red/Blue cards Blk. Blocks S Starting Line-up

