



23rd IHF Women's Junior (U20) World Championship

Slovenia (Celje and Laško)

Group E, 1. round



Match Team Statistics

Match No. 2

Romania 26 - 23 Angola

(12 - 10) (14 - 13)

22.6.2022. 12:30

Attendance: 150

Arena Zlatorog

Referees: Maria Ines Paolantoni (ARG) / Mariana Garcia (ARG)

Romania

#	Surname and name	S	Goals / shots								Attack					Def.			Penalties			TP						
			Tot.	%	9m	6m	Wing	7m	FB	Brk.	LD	As.	PC	E7	E2	TF	St.	C7	Blk	YC	2m		R	B				
5	LIXANDROIU Maria Diana		4/5	80	3/4										2			1	1									35:51
6	COMAN Andreea Alexandra	S	2/5	40				2/5							1	1												37:25
9	BICHIR Malina Ioana		0/1	0	0/1											3												22:11
10	ION Maria Valentina																											0:21
17	GOGIRLA Alicia Maria	S	1/4	25	1/4									2		1	1	4				1						26:42
18	DARIE Sarah Aida																						1					23:34
19	DUMITRASCU Alexandra Gabriela																											11:21
23	TIRLE Bianca Andreea	S	1/2	50		1/2											3		1									52:05
27	MIHAI Mihaela Andreea		6/8	75				2/4	4/4									1	2									23:53
61	PREDA Clara Beatrice																											
77	RUS Sara	S												1														59:39
79	LUPEI Corina Elena	S	5/5	100	1/1			2/2		2/2								1	1									48:39
89	STOICA Angela Stefania	S	3/5	60	1/3						2/2			2	1				1									22:28
90	VOICA Elena Bianca																											11:40
96	NECULA Ioana Rebeca	S	4/5	80	1/2			1/1	1/1				1/1	2		1		2		1				1				44:11
98	MATEA Luciana Mara																											
	Team / bench																							1				
	UKUPNO		26/40	65	7/15	1/2	7/12	5/5	2/2	3/3	1/1	10	5	5	4	12	0	2	0	2	3	0	0					

#	Surname and name	Saves / shots								
		Tot.	%	9m	6m	Wing	7m	FB	Brk.	LD
61	PREDA Clara Beatrice									
77	RUS Sara	11/34	32	6/14	1/6	1/6	2/2		1/6	
	TOTAL	11/34	32	6/14	1/6	1/6	2/2	0/0	1/6	0/0

Coach: Horatiu Pasca

Number of attacks: 49, Efficiency: 53%, Average Duration: 33.02 seconds

Attack by type of defense

	Shots	9m	6m	Wing	TF	E7	E2
On def. 6-0	9/12	4/6	0/1	4/4	6	3	1
On def. 5-1	9/20	3/9	1/1	3/8	6	2	3
Fastbreak	2/2				0	0	0

Defense by type

	Total	9m	6m	Wing	Stl.	C7	2m
Def. 6-0	19/33	7/17	4/5	5/8	0	2	2
Def. 5-1	4/5	1/1	1/1	0/0	0	0	1
Fastbreak	0/0				0	0	0

Attack with superiority / minority / goalkeeper out

	Attack				Reaction		
	Att.	Eff.	Shots	TF	FB	LD	Tot.
7 on 5 (GK out)	1	0%	0/0	1	0/0	0/0	0/0
6 on 6 (GK out)	1	0%	0/1	0	0/0	0/0	0/0
6 on 6	35	49%	17/27	8			
6 on 5	9	78%	7/7	2			
5 on 6	3	67%	2/2	1			

Player superiority / GK out counted at the end of attack (in case it changes during attack)

Defense with superiority / minority / goalkeeper out

	Attack				Reaction		
	Att.	Eff.	Shots	TF	FB	LD	Tot.
6 on 6 (GK out)	4	75%	3/3	1	0/0	0/0	0/0
6 on 6	34	35%	12/25	9			
5 on 6	4	50%	2/3	1			
6 on 5	7	86%	6/6	1			

Numbers show attacking numbers of opponent. Lower efficiency of opponent means better defense of this team

Jersey number Tot. Total shooting 6m 6m (line) shooting 9m 9m shooting Wng Wing shooting FB Fastbreak sh. 7m 7m penalty sh.
 Brk. Breakthrough sh. LD Long distance sh. As. Assists PC Pass clear chance E7 Earned 7m pen. TF Technical faults St. Steals
 2m 2m punishments C7. Committed 7m E2 Earned 2m pun. YC. Yellow cards R/B Red/Blue cards Blk. Blocks S Starting Line-up



23rd IHF Women's Junior (U20) World Championship

Slovenia (Celje and Laško)

Group E, 1. round



Match Team Statistics

Match No. 2

Romania 26 - 23 Angola

(12 - 10) (14 - 13)

22.6.2022. 12:30

Attendance: 150

Arena Zlatorog

Referees: Maria Ines Paolantoni (ARG) / Mariana Garcia (ARG)

Shot distribution by player

5 M. Lixandrou

		1/1
2/2		1/1

1 post

6 A. Coman

2/2		
		0/1

1 miss. 0/1 lob

9 M. Bichir

1 miss.

10 M. Ion

17 A. Gogirla

0/1		
		1/1

1 post 1 miss.

18 S. Darie

19 A. Dumitrascu

23 B. Tirle

	0/1	
1/1		

27 M. Mihai

2/3		
1/1		1/1
1/1		1/1

1 post

79 C. Lupei

		2/2
		3/3

89 A. Stoica

	1/1	
	0/1	
1/1		1/1

1 post

90 E. Voica

96 I. Necula

		1/1
0/1	1/1	2/2

98 L. Matea

TOTAL

4/6	1/1	3/3
1/1	0/2	3/3
5/6	1/1	8/9

4 post 3 miss. 0/1 lob

Saves distribution goalkeepers

61 C. Preda

77 S. Rus

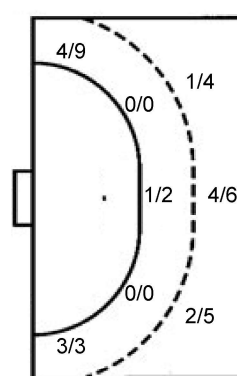
1/5		0/3
4/5	1/1	1/2
2/11	1/2	1/5

TOTAL

1/5		0/3
4/5	1/1	1/2
2/11	1/2	1/5

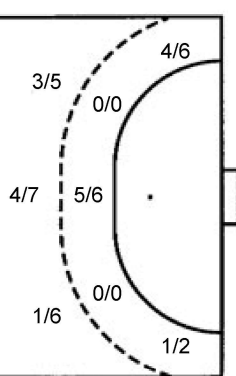
Shots by position

ATTACK



7m penalties 5/5
Fastbreak 2/2
Breakthrough 3/3
Long dist. 1/1

DEFENSE



7m penalties 0/2
Fastbreak 0/0
Breakthrough 5/6
Long dist. 0/0

Shooting statistics

Position	Goals	Sav.	Miss.	Post	Blk.	Total	%
Back (9m)	7	3	2	3	0	15	47
Line (6m)	1	1	0	0	0	2	50
Wing	7	3	1	1	0	12	58
7m penalties	5	0	0	0	0	5	100
Fastbreak	2	0	0	0	0	2	100
Breakthrough	3	0	0	0	0	3	100
Total	25	7	3	4	0	39	64

Jersey number Tot. Total shooting 6m 6m (line) shooting 9m 9m shooting Wng Wing shooting FB Fastbreak sh. 7m 7m penalty sh.
Brk. Breakthrough sh. LD Long distance sh. As. Assists PC Pass clear chance E7 Earned 7m pen. TF Technical faults St. Steals
2m 2m punishments C7. Committed 7m E2 Earned 2m pun. YC. Yellow cards R/B Red/Blue cards Blk. Blocks S Starting Line-up

Handball statistics and livescore by Toma-soft ltd (www.toma-soft.hr)



23rd IHF Women's Junior (U20) World Championship

Slovenia (Celje and Laško)

Group E, 1. round



Match Team Statistics

Match No. 2

Romania 26 - 23 Angola

(12 - 10) (14 - 13)

22.6.2022. 12:30

Attendance: 150

Arena Zlatorog

Referees: Maria Ines Paolantoni (ARG) / Mariana Garcia (ARG)

Angola

#	Surname and name	S	Goals / shots								Attack				Def.		Penalties			TP				
			Tot.	%	9m	6m	Wing	7m	FB	Brk.	LD	As.	PC	E7	E2	TF	St.	C7	Blk		YC	2m	R	B
1	MPANGU Domingas Manuela Samuel	S																						47:46
2	MARIO Liliane Martines	S	6/7	86	2/3	3/3																		48:28
4	TATI Marcela Gonçalves	S	5/5	100	1/1		4/4																	36:54
5	MANUEL Marcia Luzia Neves	S	0/1	0			0/1																	41:41
6	ROSARIO Dolores Palmira Lingombe Do	S	2/3	67	1/1	1/1		0/1																39:53
7	BELO Bernardeth Carla		2/7	29	1/5		0/1																	16:12
9	MUTEMECA Janeth Verónica Homba																							
11	LOPES Roberta Alexandra Magalhaes																							
12	MIGUEL Cristina Gregório																							18:52
13	MARCOS Regina Lino	S	2/4	50	0/1																			34:04
14	CASTRO Thayany Cacaica Batalha		1/1	100		1/1																		33:06
18	SALGADO Ruth Lufilo																							9:15
19	EPALANGA Donana Kalunga		0/1	0		0/1																		13:35
20	PASCOAL Stelvia De Jesus	S	4/9	44	3/7			0/1																45:47
31	PEDRO Lurdes Manuel		1/1	100			1/1																	15:17
80	MASSEU Mbongo Madalena		0/1	0			0/1																	19:10
Team / bench																								
UKUPNO			23/40	58	8/18	5/6	5/8	0/2	0/0	5/6	0/0	7	2	2	3	12	1	4	0	2	5	0	0	

#	Surname and name	Saves / shots								
		Tot.	%	9m	6m	Wing	7m	FB	Brk.	LD
1	MPANGU Domingas Manuela Samuel	7/30	23	3/10	1/1	3/9	0/5	0/2	0/3	
12	MIGUEL Cristina Gregório	0/3	0		0/1	0/1				0/1
TOTAL		7/33	21	3/10	1/2	3/10	0/5	0/2	0/3	0/1

Coach: José Terça Chuma

Number of attacks: 49, Efficiency: 47%, Average Duration: 40.28 seconds

Attack by type of defense

	Shots	9m	6m	Wing	TF	E7	E2
On def. 6-0	19/33	7/17	4/5	5/8	11	2	2
On def. 5-1	4/5	1/1	1/1	0/0	1	0	1
Fastbreak	0/0				0	0	0

Defense by type

	Total	9m	6m	Wing	Stl.	C7	2m
Def. 6-0	9/12	4/6	0/1	4/4	1	3	1
Def. 5-1	9/20	3/9	1/1	3/8	0	1	4
Fastbreak	2/2				0	0	0

Attack with superiority / minority / goalkeeper out

	Attack				Reaction		
	Att.	Eff.	Shots	TF	FB	LD	Tot.
6 on 6 (GK out)	4	75%	3/3	1	0/0	0/0	0/0
6 on 6	34	35%	12/25	9			
5 on 6	4	50%	2/3	1			
6 on 5	7	86%	6/6	1			

Player superiority / GK out counted at the end of attack (in case it changes during attack)

Defense with superiority / minority / goalkeeper out

	Attack				Reaction		
	Att.	Eff.	Shots	TF	FB	LD	Tot.
7 on 5 (GK out)	1	0%	0/0	1	0/0	0/0	0/0
6 on 6 (GK out)	1	0%	0/1	0	0/0	0/0	0/0
6 on 6	35	49%	17/27	8			
6 on 5	9	78%	7/7	2			
5 on 6	3	67%	2/2	1			

Numbers show attacking numbers of opponent. Lower efficiency of opponent means better defense of this team

Jersey number Tot. Total shooting 6m 6m (line) shooting 9m 9m shooting Wng Wing shooting FB Fastbreak sh. 7m 7m penalty sh.
 Brk. Breakthrough sh. LD Long distance sh. As. Assists PC Pass clear chance E7 Earned 7m pen. TF Technical faults St. Steals
 2m 2m punishments C7. Committed 7m E2 Earned 2m pun. YC. Yellow cards R/B Red/Blue cards Blk. Blocks S Starting Line-up



23rd IHF Women's Junior (U20) World Championship

Slovenia (Celje and Laško)

Group E, 1. round



Match Team Statistics

Match No. 2

Romania 26 - 23 Angola

(12 - 10) (14 - 13)

22.6.2022. 12:30

Attendance: 150

Arena Zlatorog

Referees: Maria Ines Paolantoni (ARG) / Mariana Garcia (ARG)

Shot distribution by player

2 L. Mario	4 M. Tati	5 M. Manuel	6 D. Rosario	7 B. Belo	9 J. Mutemeca	11 R. Lopes
3/3			1/1			
0/1	1/1			0/2		
3/3			1/2	1/2		
		1 post		2 miss.		
13 R. Marcos	14 T. Castro	18 R. Salgado	19 D. Epalanga	20 S. Pascoal	31 L. Pedro	80 M. Masseur
0/1				0/1		
1/1	1/1		0/1	2/2	1/1	
				1/1		
				1 post 1 miss.		1 miss.

TOTAL

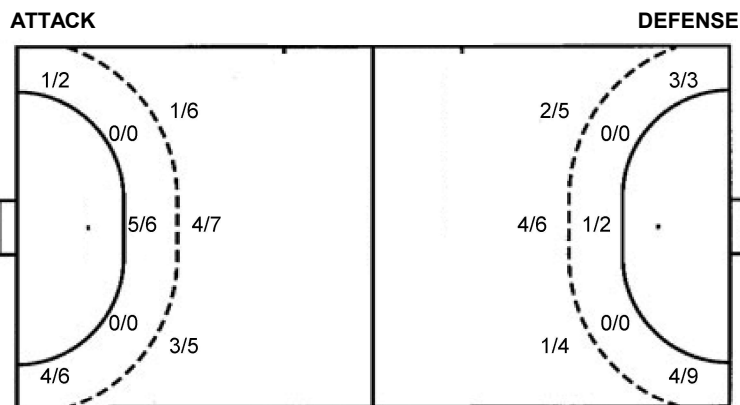
4/5		3/3
1/5	0/1	1/2
9/11	1/2	4/5

2 post 4 miss.

Saves distribution goalkeepers

1 D. Mpangu	12 C. Miguel	TOTAL
2/5	0/1	0/3
0/1	2/2	0/3
1/5	0/1	1/8
	0/1	0/1
		1/6
		0/1
		1/9

Shots by position



7m penalties 0/2
 Fastbreak 0/0
 Breakthrough 5/6
 Long dist. 0/0

7m penalties 5/5
 Fastbreak 2/2
 Breakthrough 3/3
 Long dist. 1/1

Shooting statistics

Position	Goals	Sav.	Miss.	Post	Blk.	Total	%
Back (9m)	8	6	3	1	0	18	44
Line (6m)	5	1	0	0	0	6	83
Wing	5	1	1	1	0	8	63
7m penalties	0	2	0	0	0	2	0
Fastbreak	0	0	0	0	0	0	0
Breakthrough	5	1	0	0	0	6	83
Total	23	11	4	2	0	40	58

Jersey number Tot. Total shooting 6m 6m (line) shooting 9m 9m shooting Wng Wing shooting FB Fastbreak sh. 7m 7m penalty sh.
 Brk. Breakthrough sh. LD Long distance sh. As. Assists PC Pass clear chance E7 Earned 7m pen. TF Technical faults St. Steals
 2m 2m punishments C7. Committed 7m E2 Earned 2m pun. YC. Yellow cards R/B Red/Blue cards Blk. Blocks S Starting Line-up



23rd IHF Women's Junior (U20) World Championship

Slovenia (Celje and Laško)

Group E, 1. round



Match Team Statistics

Match No. 2

Romania 26 - 23 Angola

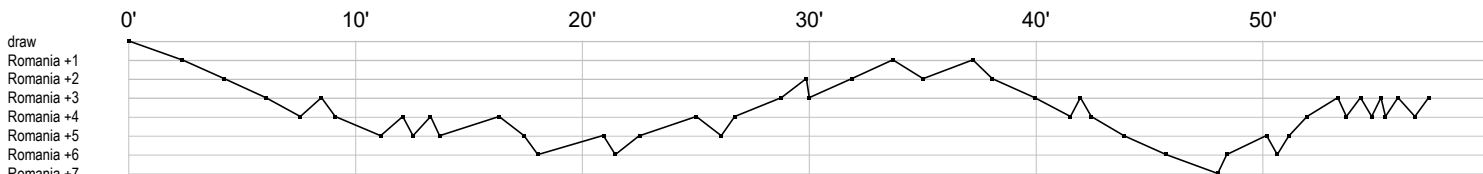
(12 - 10) (14 - 13)

22.6.2022. 12:30

Attendance: 150

Arena Zlatorog

Referees: Maria Ines Paolantoni (ARG) / Mariana Garcia (ARG)



Romania

5 Lixandrou M		g g c 2		g		t g a f i a	
6 Coman A	g a p	g				f f f	
9 Bichir M						p f p	p
10 Ion M							
17 Gogirla A	t t f a y ai		e	g	f	f t	t
18 Darie S							2
19 Dumitrascu A							
23 Tirle B	t	fe				e g	e
27 Mihai M			g	f t		g g g t gf	i g
61 Preda C							
77 Rus S	s s s r	r r sr as	r s r r s r	r	r r r r	s r s s r	r r r r r r r s
79 Lupei C	g	t g				i g	g g
89 Stoica A				g t	f		a g g a p f
90 Voica E							
96 Necula I	g ca	g g	t	2	f e	a g	t
98 Matea L							

Angola

1 Mpangu D	r r r s sr r	r r r r r	r s r	r s tsr s r	r	r	r r r r s
2 Mario L		g g g	t	g	g	t f g i	t
4 Tati M	y		c	g g			g g g
5 Manuel M					f		
6 Rosario D	t e	t	t f		a	p 2 a p	g a g a
7 Belo B		a 2	fg f	g f f a f			
9 Mutemeca J							
11 Lopes R						r r r	
12 Miguel C							
13 Marcos R	t t c			i	f	f t	g g
14 Castro T			e i		g		
18 Salgado R							
19 Epalanga D					c	2	c f
20 Pascoal S	t f b f f		g	g	a f t g g		2 f
31 Pedro L							g
80 Masseu M						f	

In game	g Goal scored	f Missed shot	a Assist	t Technical faults	b Steal
2 2min suspension	e Earned 7m	c Committed 7m	y Yellow card	r Red Card	k Blue card
i Earned 2min.	x Block	4 4min suspension	p Pass for clear chance	s Saved shot	r Received goal