



24th IHF Women's Junior (U20) World Championship



Final Round, Quarterfinals

Match Team Statistics

Match No. 95

Hungary 34 - 31 Iceland

(19 - 12) (10 - 17) (OT1: 5 - 2)

27.6.2024. 18:00

Attendance: 182

Sport Centre Jane Sandanski

Referees: Danielo Bozhinovski (MKD) / Viktor Nachevski (MKD)

Hungary

Players		Goals / shots									Attack				Def.		Penalties			TP					
#	Surname and name	S	Tot.	%	9m	6m	Wing	7m	FB	Brk.	LD	As.	PC	E7	E2	TF	St.	C7	Bik		YC	2m	R	B	
3	VARGA Emília	S	6/8	75	0/1			3/4	1/1	2/2				2			1	1				2			38:39
5	CSIKOS Luca	S	5/8	63	4/4					1/4			1	2	1	1		3				2			44:25
9	IMRE Szofi																								29:04
15	TÖRÖK Fanni Zsuzsanna		1/1	100					1/1									1							7:14
17	PANYI Krsztina Anna		0/1	0							0/1														8:06
18	CSERNYÁNSZKI Liliána		5/11	45	0/3	1/1				4/7			2	5		1	5	2							44:42
19	VÁRTOK Tamara	S	1/3	33			1/3								1	1									56:49
28	ZAJ Klára	S												1											35:52
33	KOVÁCS Anikó		3/3	100						3/3			1												11:56
34	GÉM Léna		1/3	33			1/3										1	1							13:11
36	SZABÓ Lili Zsófi	S	0/2	0		0/1			0/1								1					1			22:23
48	FARAGÓ Lea		4/5	80	2/2			0/1		2/2			1				4	1							20:32
80	KÖVÉR Luca		0/1	0		0/1									1	1	2								37:47
81	FARKAS Júlia Agnes	S	5/7	71	1/2					4/5			2	2	2	1	5	1				1			47:11
91	GAJDOS Petra																								7:58
99	SZABÓ Anna	S	3/6	50		0/1	3/5											1	1			1			64:11
	Team / bench																					1			
	UKUPNO		34/59	58	7/12	1/4	5/11	3/5	2/3	16/23	0/1		6	13	5	5	19	11	1	0	1	7	0	0	

Goalkeepers		Saves / shots								
#	Surname and name	Tot.	%	9m	6m	Wing	7m	FB	Brk.	LD
9	IMRE Szofi	6/18	33	2/4	0/1	3/5	0/1	0/2	1/5	
28	ZAJ Klára	8/26	31	3/7	1/5	3/7		0/1	0/5	1/1
	TOTAL	14/44	32	5/11	1/6	6/12	0/1	0/3	1/10	1/1

Coach: Zoltán Szilágyi

Number of attacks: 72, Efficiency: 47%, Average Duration: 27.28 seconds

Attack by type of defense

	Shots	9m	6m	Wing	TF	E7	E2
On def. 6-0	17/29	5/7	0/3	3/6	6	4	2
On def. 5-1	12/21	2/5	1/1	2/5	13	1	3
Fastbreak	2/3				0	0	0

Defense by type

	Total	9m	6m	Wing	Stl.	C7	2m
Def. 6-0	26/45	6/13	5/6	6/16	11	1	0
Fastbreak	3/3				0	0	7

Attack with superiority / minority / goalkeeper out

	Attack				Reaction		
	Att.	Eff.	Shots	TF	FB	LD	Tot.
7 on 6 (GK out)	4	50%	2/3	1	0/0	0/0	0/0
6 on 6 (GK out)	8	50%	4/6	2	0/0	1/2	1/2
6 on 5 (GK out)	4	50%	2/4	0	0/0	0/0	0/0
6 on 6	48	46%	22/32	16			
6 on 5	7	57%	4/7	0			
5 on 6	1	0%	0/1	0			

Player superiority / GK out counted at the end of attack (in case it changes during attack)

Defense with superiority / minority / goalkeeper out

	Attack				Reaction		
	Att.	Eff.	Shots	TF	FB	LD	Tot.
7 on 6 (GK out)	7	57%	4/7	0	0/0	0/0	0/0
6 on 6 (GK out)	6	33%	2/5	1	0/0	0/0	0/0
6 on 6	45	42%	19/26	19			
7 on 5 (GK out)	1	100%	1/1	0	0/0	0/0	0/0
6 on 5 (GK out)	3	67%	2/3	0	0/0	0/0	0/0
6 on 5	10	30%	3/8	2			

Numbers show attacking numbers of opponent. Lower efficiency of opponent means better defense of this team

Jersey number Tot. Total shooting 6m 6m (line) shooting 9m 9m shooting Wng Wing shooting FB Fastbreak sh. 7m 7m penalty sh.
 Brk. Breakthrough sh. LD Long distance sh. As. Assists PC Pass clear chance E7 Earned 7m pen. TF Technical faults St. Steals
 2m 2m punishments C7. Committed 7m E2 Earned 2m pun. YC. Yellow cards R/B Red/Blue cards Blk. Blocks S Starting Line-up



24th IHF Women's Junior (U20) World Championship



Final Round, Quarterfinals

Match Team Statistics

Match No. 95

Hungary 34 - 31 Iceland

(19 - 12) (10 - 17) (OT1: 5 - 2)

27.6.2024. 18:00

Attendance: 182

Sport Centre Jane Sandanski

Referees: Danielo Bozhinovski (MKD) / Viktor Nachevski (MKD)

Shot distribution by player

3 E. Varga 2/2 1/1 2/2 1 post 1 miss.	5 L. Csikos 1/1 0/1 3/3 1/1 1 post 1 miss.	15 F. Török 1/1	17 K. Panyi 0/1	18 L. Cseryánszki 1/2 2/2 0/1 2/2 2 miss. 2 block	19 T. Vártok 1/1 0/1 1 miss.	33 A. Kovács 1/1 1/1
34 L. Gém 0/1 1/1 0/1	36 L. Szabó 0/1 1 miss.	48 L. Faragó 1/1 1/2 2/2	80 L. Kövér 1 miss.	81 J. Farkas 1/1 1/1 1/1 1/1 1 post 1/2	91 P. Gajdos	99 A. Szabó 0/1 2/2 1/1 2 miss.

TOTAL

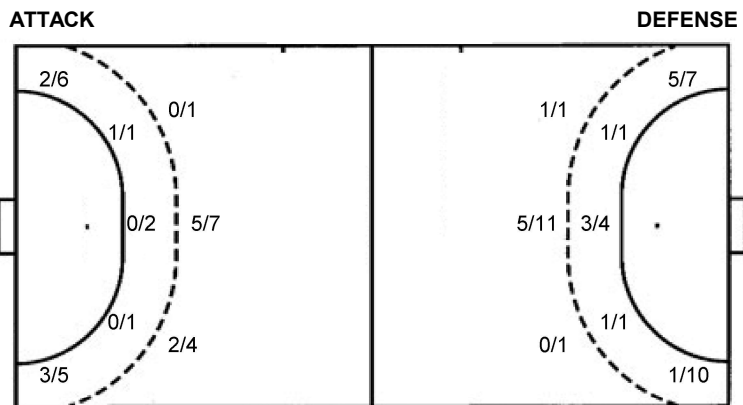
4/5	0/1	2/3
3/4	1/3	7/9
11/12	0/2	6/6

3 post 9 miss. 2 block

Saves distribution goalkeepers

9 S. Imre 1/2 1/3 0/2	28 K. Zaj 0/1 1/3 2/2 2/3 2/7 1/2 0/5	TOTAL 1/3 2/6 2/2 3/7 2/9 2/3 2/10
---------------------------------------	---	--

Shots by position



7m penalties	3/5	7m penalties	1/1
Fastbreak	2/3	Fastbreak	3/3
Breakthrough	16/23	Breakthrough	9/10
Long dist.	0/1	Long dist.	1/2

Shooting statistics

Position	Goals	Sav.	Miss.	Post	Blk.	Total	%
Back (9m)	7	1	1	1	2	12	58
Line (6m)	1	1	2	0	0	4	25
Wing	5	4	2	0	0	11	45
7m penalties	3	1	1	0	0	5	60
Fastbreak	2	0	1	0	0	3	67
Breakthrough	16	3	2	2	0	23	70
Total	34	10	9	3	2	58	59

Jersey number Tot. Total shooting 6m 6m (line) shooting 9m 9m shooting Wng Wing shooting FB Fastbreak sh. 7m 7m penalty sh.
 Brk. Breakthrough sh. LD Long distance sh. As. Assists PC Pass clear chance E7 Earned 7m pen. TF Technical faults St. Steals
 2m 2m punishments C7. Committed 7m E2 Earned 2m pun. YC. Yellow cards R/B Red/Blue cards Blk. Blocks S Starting Line-up



24th IHF Women's Junior (U20) World Championship



Final Round, Quarterfinals

Match Team Statistics
Match No. 95

Hungary 34 - 31 Iceland
(19 - 12) (10 - 17) (OT1: 5 - 2)

27.6.2024. 18:00
Attendance: 182
Sport Centre Jane Sandanski

Referees: Danielo Bozhinovski (MKD) / Viktor Nachevski (MKD)

Iceland

#	Surname and name	S	Goals / shots								Attack					Def.			Penalties			TP				
			Tot.	%	9m	6m	Wing	7m	FB	Brk.	LD	As.	PC	E7	E2	TF	St.	C7	Blk	YC	2m		R	B		
2	THORKELSDÓTTIR Elin Klara	S	6/7	86	3/4					3/3		4	4		1	8										54:29
3	ODDSDÓTTIR HAGALÍN Alfa Brá	S	3/4	75	0/1				1/1	2/2		2			2	1	1									40:48
4	BENEDIKTSDÓTTIR Brynja Katrín		2/2	100		2/2									2	1							1			15:12
5	TRAUSTADÓTTIR Tinna Sigurrós	S	0/1	0	0/1							1	2		1	1										17:18
6	ÁSMUNDSÓTTIR Katrín Anna	S	0/3	0				0/3								3										39:35
7	JÓNSDÓTTIR Hildur Lilja		0/1	0	0/1																					16:53
8	JÓHANNSDÓTTIR Inga Dís	S	5/7	71	1/3				1/1	3/3		3	3			3	2									55:30
11	GUDMUNDSÓTTIR Rakel Oddny																									4:22
12	BJARNASEN Ethel Gyda	S																								55:27
13	THORBJÖRNSDÓTTIR Elínborg Kattla																									12:13
14	ELÍASDÓTTIR Elísa		3/4	75		3/4										1	1						1			34:03
15	SIGSTEINSDÓTTIR Sonja Lind		2/8	25				1/7		1/1					1									1		30:58
18	AGÜTSDÓTTIR Lilja	S	7/10	70				5/7	1/1																	63:50
19	STEINDÓRSÓTTIR Embla		3/5	60	2/3					1/2		1	3			2								1		33:31
32	INGADÓTTIR Anna Karólína																									7:08
35	JÓNSDÓTTIR Sýlvía Sigridur																							2		8:43
Team / bench																									1	
UKUPNO			31/52	60	6/13	5/6	6/17	1/1	3/3	9/10	1/2	13	12	1	4	22	7	5	3	1	6	0	0			

#	Surname and name	Saves / shots								
		Tot.	%	9m	6m	Wing	7m	FB	Brk.	LD
12	BJARNASEN Ethel Gyda	10/39	26	1/7	1/2	4/9	1/3	0/1	3/17	
32	INGADÓTTIR Anna Karólína	1/6	17	0/1			0/1	0/1	0/2	1/1
TOTAL		11/45	24	1/8	1/2	4/9	1/4	0/2	3/19	1/1

Coach: **Agústhór Jóhannsson**

Number of attacks: 72, Efficiency: 43%, Average Duration: 30.85 seconds

Attack by type of defense

	Shots	9m	6m	Wing	TF	E7	E2
On def. 6-0	26/45	6/13	5/6	6/16	22	1	4
Fastbreak	3/3				0	0	0

Defense by type

	Total	9m	6m	Wing	Stl.	C7	2m
Def. 6-0	17/29	5/7	0/3	3/6	2	4	0
Def. 5-1	12/21	2/5	1/1	2/5	5	1	0
Fastbreak	2/3				0	0	6

Attack with superiority / minority / goalkeeper out

	Attack				Reaction		
	Att.	Eff.	Shots	TF	FB	LD	Tot.
7 on 6 (GK out)	7	57%	4/7	0	0/0	0/0	0/0
6 on 6 (GK out)	6	33%	2/5	1	0/0	0/0	0/0
6 on 6	45	42%	19/26	19			
7 on 5 (GK out)	1	100%	1/1	0	0/0	0/0	0/0
6 on 5 (GK out)	3	67%	2/3	0	0/0	0/0	0/0
6 on 5	10	30%	3/8	2			

Player superiority / GK out counted at the end of attack (in case it changes during attack)

Defense with superiority / minority / goalkeeper out

	Attack				Reaction		
	Att.	Eff.	Shots	TF	FB	LD	Tot.
7 on 6 (GK out)	4	50%	2/3	1	0/0	0/0	0/0
6 on 6 (GK out)	8	50%	4/6	2	0/0	1/2	1/2
6 on 5 (GK out)	4	50%	2/4	0	0/0	0/0	0/0
6 on 6	48	46%	22/32	16			
6 on 5	7	57%	4/7	0			
5 on 6	1	0%	0/1	0			

Numbers show attacking numbers of opponent. Lower efficiency of opponent means better defense of this team

Jersey number Tot. Total shooting 6m 6m (line) shooting 9m 9m shooting Wng Wing shooting FB Fastbreak sh. 7m 7m penalty sh.
Brk. Breakthrough sh. LD Long distance sh. As. Assists PC Pass clear chance E7 Earned 7m pen. TF Technical faults St. Steals
2m 2m punishments C7. Committed 7m E2 Earned 2m pun. YC. Yellow cards R/B Red/Blue cards Blk. Blocks S Starting Line-up

Handball statistics and livescore by Toma-soft ltd (www.toma-soft.hr)



24th IHF Women's Junior (U20) World Championship



Final Round, Quarterfinals

Match Team Statistics

Match No. 95

Hungary 34 - 31 Iceland

(19 - 12) (10 - 17) (OT1: 5 - 2)

27.6.2024. 18:00

Attendance: 182

Sport Centre Jane Sandanski

Referees: Danielo Bozhinovski (MKD) / Viktor Nachevski (MKD)

Shot distribution by player

2 E. Thorkelsdóttir

0/1		
4/4	1/1	1/1

3 A. Oddsdóttir

Hagalín		
	0/1	1/1
		2/2

4 B. Benediktsdóttir

		1/1
1/1		

5 T. Traustadóttir

0/1		

6 K. Ásmundsdóttir

0/1		

2 miss.

7 H. Jónsdóttir

		0/1

8 I. Jóhannsdóttir

1/1		
0/1		2/2
2/2		

1 miss.

11 R. Gudmundsdóttir

13 E. Thorbjörnsdóttir

14 E. Elíasdóttir

		0/1
		1/1

2/2 lob

15 S. Sigsteinsdóttir

0/1		0/2
1/1	0/1	1/1

2 miss.

18 L. Ágútsdóttir

		1/1
3/3	1/2	
		2/3

1 post

19 E. Steindórsdóttir

1/1		
		1/1
	0/1	1/1

1 miss.

35 S. Jónsdóttir

TOTAL

2/3		2/2
4/6	1/3	4/7
7/9	1/3	8/10

1 post 6 miss. 2/2 lob

Saves distribution goalkeepers

12 E. Bjarnasen

1/5	1/1	1/2
1/4	1/2	2/6
1/12	2/2	0/5

32 A. Ingadóttir

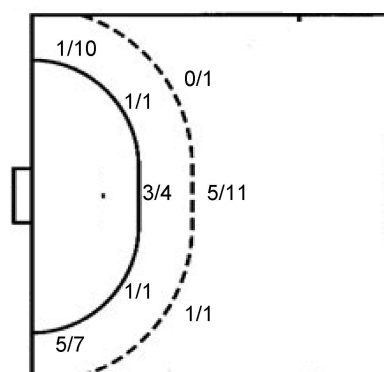
		0/1
	1/1	0/3
		0/1

TOTAL

1/5	1/1	1/3
1/4	2/3	2/9
1/12	2/2	0/6

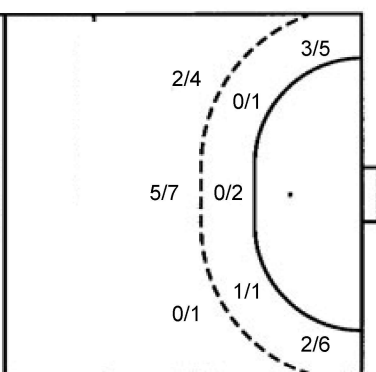
Shots by position

ATTACK



7m penalties 1/1
Fastbreak 3/3
Breakthrough 9/10
Long dist. 1/2

DEFENSE



7m penalties 3/5
Fastbreak 2/3
Breakthrough 16/23
Long dist. 0/1

Shooting statistics

Position	Goals	Sav.	Miss.	Post	Blk.	Total	%
Back (9m)	6	5	2	0	0	13	46
Line (6m)	5	1	0	0	0	6	83
Wing	6	6	4	1	0	17	35
7m penalties	1	0	0	0	0	1	100
Fastbreak	3	0	0	0	0	3	100
Breakthrough	9	1	0	0	0	10	90
Total	30	13	6	1	0	50	60

Jersey number Tot. Total shooting 6m 6m (line) shooting 9m 9m shooting Wng Wing shooting FB Fastbreak sh. 7m 7m penalty sh.
Brk. Breakthrough sh. LD Long distance sh. As. Assists PC Pass clear chance E7 Earned 7m pen. TF Technical faults St. Steals
2m 2m punishments C7. Committed 7m E2 Earned 2m pun. YC. Yellow cards R/B Red/Blue cards Blk. Blocks S Starting Line-up

Handball statistics and livescore by Toma-soft ltd (www.toma-soft.hr)

