



# 24th IHF Women's Junior (U20) World Championship



Final Round, Quarterfinals

Match Team Statistics  
Match No. 93

**Netherlands 25 - 21 Sweden**  
(14 - 8) (11 - 13)

27.6.2024. 18:00  
Attendance: 152  
Sport Centre Boris Trajkovski

Referees: Yann Carmaux (FRA) / Julien Mursch (FRA)

## Netherlands

Players		Goals / shots									Attack					Def.			Penalties				TP		
#	Surname and name	S	Tot.	%	9m	6m	Wing	7m	FB	Brk.	LD	As.	PC	E7	E2	TF	St.	C7	Blk	YC	2m	R	B		
1	VAN DER VORST Nikki																								3:03
2	SCHANSSEMA Bianca	S	0/1	0							0/1														53:21
3	VAN DIEPEN Lynn																								
5	VAN DER HELM Judith	S	1/4	25	0/2						1/2					1	3		1						29:37
7	LOY Jalisha	S	1/4	25	0/1							1	1	1	1	5	1						2		38:49
9	BAKKER Donna	S	2/5	40			2/4			0/1						1									58:45
11	LUCHIES Daphne		3/6	50	1/2	1/1				1/3		4	2			2	1								40:18
12	VAN VLIET Lois	S	4/6	67			3/5	1/1					1			1									59:42
14	VAN MAURIK Alieke	S	6/13	46	4/9					2/3	0/1	3	1			6	1	1	1						55:01
15	HOLTMAN Lynn		0/1	0						0/1						3		1							6:52
21	MAARSCHALKERWEERD Romée	S	7/8	88		4/5			2/2	1/1							3	1	5		2				55:05
23	ALDERDEN Rozemarijn		1/2	50	1/2													1							6:39
24	HORVERS Maud																								0:31
28	HÖLSCHER Lisa																								
37	MUILENBURG Fenna																								8:48
38	SCHOLTEN Paris																								2:02
	Team / bench																								
	UKUPNO		25/50	50	6/16	5/6	5/9	1/1	2/2	5/12	1/4	8	5	1	1	19	9	4	7	0	4	0	0		

Goalkeepers		Saves / shots								
#	Surname and name	Tot.	%	9m	6m	Wing	7m	FB	Brk.	LD
1	VAN DER VORST Nikki	2/6	33	1/1	0/2	0/1	0/1		1/1	
2	SCHANSSEMA Bianca	14/31	45	5/9	1/5	3/5	0/3	0/1	5/8	
	TOTAL	16/37	43	6/10	1/7	3/6	0/4	0/1	6/9	0/0

Coach: Ricardo Clarijs

Number of attacks: 64, Efficiency: 39%, Average Duration: 25.63 seconds

### Attack by type of defense

	Shots	9m	6m	Wing	TF	E7	E2
On def. 6-0	15/33	5/15	2/3	5/8	11	1	1
On def. 5-1	2/5	1/1	1/1	0/1	5	0	0
On def. 3-3	3/4	0/0	1/1	0/0	3	0	0
Fastbreak	2/2				0	0	0

### Defense by type

	Total	9m	6m	Wing	Stl.	C7	2m
Def. 6-0	15/44	4/19	5/6	3/6	9	4	0
Fastbreak	1/1				0	0	4

### Attack with superiority / minority / goalkeeper out

	Attack				Reaction		
	Att.	Eff.	Shots	TF	FB	LD	Tot.
7 on 6 (GK out)	7	29%	2/6	1	0/0	0/0	0/0
6 on 6 (GK out)	5	40%	2/5	0	0/0	0/0	0/0
6 on 6	49	37%	18/31	18			
6 on 5	2	100%	2/2	0			
5 on 6	1	100%	1/1	0			

Player superiority / GK out counted at the end of attack (in case it changes during attack)

### Defense with superiority / minority / goalkeeper out

	Attack				Reaction		
	Att.	Eff.	Shots	TF	FB	LD	Tot.
7 on 6 (GK out)	23	39%	9/17	6	0/0	1/2	1/2
6 on 6 (GK out)	1	100%	1/1	0	0/0	0/0	0/0
6 on 6	31	19%	6/15	16			
5 on 6	1	0%	0/0	1			
7 on 5 (GK out)	3	0%	0/3	0	0/0	0/0	0/0
6 on 5	6	83%	5/5	1			

Numbers show attacking numbers of opponent. Lower efficiency of opponent means better defense of this team

# Jersey number Tot. Total shooting 6m 6m (line) shooting 9m 9m shooting Wng Wing shooting FB Fastbreak sh. 7m 7m penalty sh.  
Brk. Breakthrough sh. LD Long distance sh. As. Assists PC Pass clear chance E7 Earned 7m pen. TF Technical faults St. Steals  
2m 2m punishments C7. Committed 7m E2 Earned 2m pun. YC. Yellow cards R/B Red/Blue cards Blk. Blocks S Starting Line-up



# 24th IHF Women's Junior (U20) World Championship



Final Round, Quarterfinals

Match Team Statistics

Match No. 93

## Netherlands 25 - 21 Sweden

(14 - 8) (11 - 13)

27.6.2024. 18:00

Attendance: 152

Sport Centre Boris Trajkovski

Referees: Yann Carmaux (FRA) / Julien Mursch (FRA)

### Shot distribution by player

3 L. Van Diepen


5 J. Van Der Helm

	1/2	

1 miss. 1 block

7 J. Loy

		1/1

3 miss.

9 D. Bakker

		1/2
1/1		0/1

1 post

11 D. Luchies

		1/1
		0/1
1/2		1/1

1 post

12 L. Van Vliet

0/1		2/2
0/1		1/1
1/1		

14 A. Van Maurik

		0/1
1/3	0/1	1/1
2/3		2/2

1 post 1 miss.

15 L. Holtman

		0/1

21 R.

		1/1
		1/1
1/1		4/5

Maarschalkerweerd

23 R. Alderden

1/1		

1 miss.

24 M. Horvers


28 L. Hölscher


37 F. Muilenburg


38 P. Scholten


### TOTAL

0/1		4/5
2/5	1/3	4/7
6/8		8/10

3 post 6 miss. 1 block

### Saves distribution goalkeepers

1 N. Van Der Vorst

	0/1	0/1
1/1		
1/2		

2 B. Schanssema

		1/2
4/7		5/8
1/4		3/9

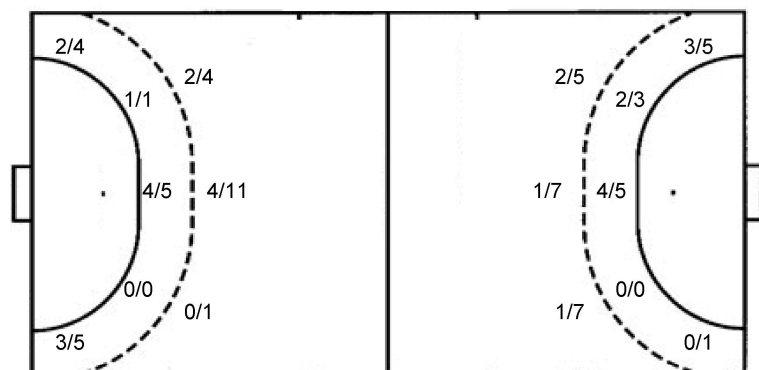
TOTAL

	0/1	1/3
5/8		5/8
2/6		3/9

### Shots by position

ATTACK

DEFENSE



7m penalties 1/1  
Fastbreak 2/2  
Breakthrough 5/12  
Long dist. 1/4

7m penalties 4/4  
Fastbreak 1/1  
Breakthrough 3/14  
Long dist. 0/0

### Shooting statistics

Position	Goals	Sav.	Miss.	Post	Blk.	Total	%
Back (9m)	6	3	4	2	1	16	38
Line (6m)	5	1	0	0	0	6	83
Wing	5	4	0	0	0	9	56
7m penalties	1	0	0	0	0	1	100
Fastbreak	2	0	0	0	0	2	100
Breakthrough	5	4	2	1	0	12	42
<b>Total</b>	<b>24</b>	<b>12</b>	<b>6</b>	<b>3</b>	<b>1</b>	<b>46</b>	<b>52</b>

# Jersey number Tot. Total shooting 6m 6m (line) shooting 9m 9m shooting Wng Wing shooting FB Fastbreak sh. 7m 7m penalty sh.  
Brk. Breakthrough sh. LD Long distance sh. As. Assists PC Pass clear chance E7 Earned 7m pen. TF Technical faults St. Steals  
2m 2m punishments C7. Committed 7m E2 Earned 2m pun. YC. Yellow cards R/B Red/Blue cards Blk. Blocks S Starting Line-up

Handball statistics and livescore by Toma-soft ltd (www.toma-soft.hr)



# 24th IHF Women's Junior (U20) World Championship



Final Round, Quarterfinals

Match Team Statistics  
Match No. 93

**Netherlands 25 - 21 Sweden**  
(14 - 8) (11 - 13)

27.6.2024. 18:00  
Attendance: 152  
Sport Centre Boris Trajkovski

Referees: Yann Carmaux (FRA) / Julien Mursch (FRA)

## Sweden

#	Surname and name	S	Goals / shots								Attack					Def.			Penalties				TP		
			Tot.	%	9m	6m	Wing	7m	FB	Brk.	LD	As.	PC	E7	E2	TF	St.	C7	Blk	YC	2m	R		B	
5	HOLGERSSON Michelle		1/3	33		0/1	1/2					1	1												29:41
6	MIHAILOVIC Emma	S	4/12	33	2/9			1/1	1/2			2	2		2	6	1								43:04
7	JOHANSSON Sophie	S	3/4	75		1/1	2/3								4	2									30:10
8	REHNBERG Madeleine		0/1	0			0/1								1										13:02
11	LÖNNEGREN Elise		0/3	0	0/1				0/2				2		2										19:04
12	JOHANSSON Ella																								28:23
13	GRANAT Felicia		1/5	20		0/1			1/4		3		1	2	3	1									47:19
14	WIKSFORS Stina	S	5/7	71		5/5			0/2		1				2	2		1							51:41
16	WALL Ida																								
18	VAN KERKVOORDE Isabel	S	3/8	38	2/4				1/4		1		1		1	1	1			1					44:20
19	KYLBERG Thea	S	0/5	0	0/5						1				3										38:13
21	LITTORIN Stina	S																							23:20
25	WALLIN Moa																								
28	CANTBY Hilma	S	4/4	100			4/4				1				2										43:07
31	LEO Ebba																								8:04
32	ÖSTERWALL Elin																								
	Team / bench																						1		
	UKUPNO		21/52	40	4/19	6/8	3/6	4/4	1/1	3/14	0/0	10	3	4	4	24	7	1	1	1	1	0	0		

#	Surname and name	Saves / shots								
		Tot.	%	9m	6m	Wing	7m	FB	Brk.	LD
12	JOHANSSON Ella	11/24	46	1/4	1/4	3/4	0/1	0/1	4/8	2/2
16	WALL Ida									
21	LITTORIN Stina	3/14	21	2/5	0/2	1/5		0/1	0/1	
	TOTAL	14/38	37	3/9	1/6	4/9	0/1	0/2	4/9	2/2

Coach: Jesper Östlund

Number of attacks: 65, Efficiency: 32%, Average Duration: 30.12 seconds

### Attack by type of defense

	Shots	9m	6m	Wing	TF	E7	E2
On def. 6-0	15/44	4/19	5/6	3/6	24	4	4
Fastbreak	1/1				0	0	0

### Defense by type

	Total	9m	6m	Wing	Stl.	C7	2m
Def. 6-0	15/33	5/15	2/3	5/8	4	1	0
Def. 5-1	2/5	1/1	1/1	0/1	2	0	0
Def. 3-3	3/4	0/0	1/1	0/0	1	0	0
Fastbreak	2/2				0	0	1

### Attack with superiority / minority / goalkeeper out

	Attack				Reaction		
	Att.	Eff.	Shots	TF	FB	LD	Tot.
7 on 6 (GK out)	23	39%	9/17	6	0/0	1/2	1/2
6 on 6 (GK out)	1	100%	1/1	0	0/0	0/0	0/0
6 on 6	31	19%	6/15	16			
5 on 6	1	0%	0/0	1			
7 on 5 (GK out)	3	0%	0/3	0	0/0	0/0	0/0
6 on 5	6	83%	5/5	1			

Player superiority / GK out counted at the end of attack (in case it changes during attack)

### Defense with superiority / minority / goalkeeper out

	Attack				Reaction		
	Att.	Eff.	Shots	TF	FB	LD	Tot.
7 on 6 (GK out)	7	29%	2/6	1	0/0	0/0	0/0
6 on 6 (GK out)	5	40%	2/5	0	0/0	0/0	0/0
6 on 6	49	37%	18/31	18			
6 on 5	2	100%	2/2	0			
5 on 6	1	100%	1/1	0			

Numbers show attacking numbers of opponent. Lower efficiency of opponent means better defense of this team

# Jersey number Tot. Total shooting 6m 6m (line) shooting 9m 9m shooting Wng Wing shooting FB Fastbreak sh. 7m 7m penalty sh.  
Brk. Breakthrough sh. LD Long distance sh. As. Assists PC Pass clear chance E7 Earned 7m pen. TF Technical faults St. Steals  
2m 2m punishments C7. Committed 7m E2 Earned 2m pun. YC. Yellow cards R/B Red/Blue cards Blk. Blocks S Starting Line-up

Handball statistics and livescore by Toma-soft ltd (www.toma-soft.hr)



# 24th IHF Women's Junior (U20) World Championship



Final Round, Quarterfinals

Match Team Statistics

Match No. 93

## Netherlands 25 - 21 Sweden

(14 - 8) (11 - 13)

27.6.2024. 18:00

Attendance: 152

Sport Centre Boris Trajkovski

Referees: Yann Carmaux (FRA) / Julien Mursch (FRA)

### Shot distribution by player

5 M. Holgersson

0/2		

1/1 lob

6 E. Mihailovic

		0/1
1/1		1/2
		2/2

3 miss. 3 block

7 S. Johansson

		1/1
0/1		
		1/1

1/1 lob

8 M. Rehnberg

		0/1

11 E. Lönnegren

0/1		

1 miss. 1 block

13 F. Granat

1/1		0/1
		0/1

1 post 1 miss.

14 S. Wiksfors

	1/1	1/1
1/1		2/3

1 block

18 I. Van Kerkvoorde

		2/3
1/2		0/1

1 miss. 1 block

19 T. Kylberg

0/2		0/1

1 post 1 block

25 M. Wallin


28 H. Cantby

1/1		
2/2		1/1

31 E. Leo


32 E. Österwall


TOTAL

	1/1	2/3
3/8		3/8
4/6		6/9

2 post 6 miss. 7 block 2/2 lob

### Saves distribution goalkeepers

12 E. Johansson

1/1		1/1
2/3	2/2	3/5
1/6		1/6

16 I. Wall


21 S. Littorin

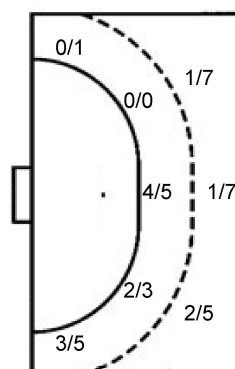
		0/4
1/2		0/2
1/2		1/4

TOTAL

1/1		1/5
3/5	2/2	3/7
2/8		2/10

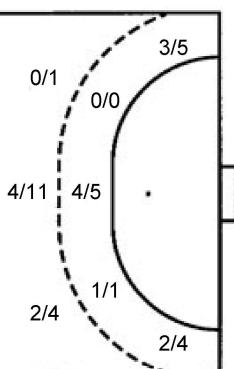
### Shots by position

ATTACK



7m penalties 4/4  
Fastbreak 1/1  
Breakthrough 3/14  
Long dist. 0/0

DEFENSE



7m penalties 1/1  
Fastbreak 2/2  
Breakthrough 5/12  
Long dist. 1/4

### Shooting statistics

Position	Goals	Sav.	Miss.	Post	Blk.	Total	%
Back (9m)	4	6	2	1	6	19	21
Line (6m)	6	1	1	0	0	8	75
Wing	3	3	0	0	0	6	50
7m penalties	4	0	0	0	0	4	100
Fastbreak	1	0	0	0	0	1	100
Breakthrough	3	6	3	1	1	14	21
<b>Total</b>	<b>21</b>	<b>16</b>	<b>6</b>	<b>2</b>	<b>7</b>	<b>52</b>	<b>40</b>

# Jersey number Tot. Total shooting 6m 6m (line) shooting 9m 9m shooting Wng Wing shooting FB Fastbreak sh. 7m 7m penalty sh.  
Brk. Breakthrough sh. LD Long distance sh. As. Assists PC Pass clear chance E7 Earned 7m pen. TF Technical faults St. Steals  
2m 2m punishments C7. Committed 7m E2 Earned 2m pun. YC. Yellow cards R/B Red/Blue cards Blk. Blocks S Starting Line-up

Handball statistics and livescore by Toma-soft ltd (www.toma-soft.hr)

