



24th IHF Women's Junior (U20) World Championship



Final Round, 25-28. place

Match Team Statistics

Match No. 89

Iran 17 - 29 Czechia

(4 - 16) (13 - 13)

27.6.2024. 11:15

Attendance: 67

Sport Centre Jane Sandanski

Referees: Vesna Balvan (BIH) / Tatjana Prastalo (BIH)

Iran

#	Surname and name	S	Goals / shots								Attack				Def.			Penalties				TP						
			Tot.	%	9m	6m	Wing	7m	FB	Brk.	LD	As.	PC	E7	E2	TF	St.	C7	Blk	YC	2m		R	B				
4	MERIKH Fatemeh	S	9/13	69	3/6				2/2				4/5		2	2		1	5									42:04
7	ZANGENEH Saba																		2									16:30
11	NIKAN Elahe	S	3/3	100		3/3													2					2			45:38	
12	YARMOHAMMADTOUSKI Elnaz	S																									49:50	
14	BAHMAEI Arezoo	S	1/2	50				1/2											4	1							49:43	
21	ARIANFAR Hasti																										3:38	
24	BADVI Aseman																		4	1							42:12	
29	NOSOOHI Shahrzad	S	1/4	25	0/3							1/1		1	1				4								52:05	
33	SHABANI KOUHBANANI Mohaddeseh																										0:17	
49	GHAZANFARI Saeideh																											
72	FOTOVATI Zahra		0/2	0				0/2										1									23:19	
76	KOUDZARIFARAHANI Nastaran	S	2/8	25	1/6							1/2		1	1			1	5					1			35:45	
87	SHANIN Fatemeh																		1								2:01	
88	OSHAGHI Maede	S	1/2	50							0/1	1/1					1	1	2		1	1					52:12	
90	DEGHANI Saba																							1			2:16	
96	MEHRI Ghazaleh																										2:30	
	Team / bench																		1									
	UKUPNO		17/34	50	4/15	3/3	1/4	2/2	0/1	7/9	0/0			4	4	2	3	30	3	2	1	0	4	0	0			

Goalkeepers		Saves / shots								
#	Surname and name	Tot.	%	9m	6m	Wing	7m	FB	Brk.	LD
12	YARMOHAMMADTOUSKI Elnaz	12/37	32	1/4	0/5	3/6	0/1	3/9	5/12	
33	SHABANI KOUHBANANI Mohaddeseh	0/1	0				0/1			
96	MEHRI Ghazaleh	0/1	0					0/1		
	TOTAL	12/39	31	1/4	0/5	3/6	0/2	3/10	5/12	0/0

Coach: Nashmin Shafeyan

Number of attacks: 62, Efficiency: 27%, Average Duration: 39.23 seconds

Attack by type of defense

	Shots	9m	6m	Wing	TF	E7	E2
On def. 6-0	5/13	1/5	1/1	1/4	9	0	1
On def. 5-1	5/12	1/7	1/1	0/0	15	0	1
On def. 3-2-1	5/6	2/3	1/1	0/0	6	2	1
Fastbreak	0/1				0	0	0

Defense by type

	Total	9m	6m	Wing	Stl.	C7	2m
Def. 6-0	10/17	3/5	3/3	3/4	1	1	0
Def. 5-1	8/22	0/4	2/2	0/5	2	1	0
Fastbreak	8/13				0	0	4

Attack with superiority / minority / goalkeeper out

	Attack				Reaction		
	Att.	Eff.	Shots	TF	FB	LD	Tot.
7 on 6 (GK out)	11	55%	6/7	4	2/2	0/0	2/2
7 on 5 (GK out)	4	50%	2/2	2	0/0	1/2	1/2
6 on 6 (GK out)	4	25%	1/3	1	0/0	0/0	0/0
6 on 6	38	18%	7/17	21			
6 on 5	3	33%	1/3	0			
5 on 6	1	0%	0/0	1			
5 on 5	1	0%	0/0	1			

Player superiority / GK out counted at the end of attack (in case it changes during attack)

Defense with superiority / minority / goalkeeper out

	Attack				Reaction		
	Att.	Eff.	Shots	TF	FB	LD	Tot.
6 on 6 (GK out)	3	33%	1/3	0	0/0	0/0	0/0
6 on 6	47	43%	20/39	8			
5 on 6	3	67%	2/3	0			
6 on 5	8	63%	5/8	0			
5 on 5	1	100%	1/1	0			

Numbers show attacking numbers of opponent. Lower efficiency of opponent means better defense of this team

Jersey number Tot. Total shooting 6m 6m (line) shooting 9m 9m shooting Wng Wing shooting FB Fastbreak sh. 7m 7m penalty sh.
 Brk. Breakthrough sh. LD Long distance sh. As. Assists PC Pass clear chance E7 Earned 7m pen. TF Technical faults St. Steals
 2m 2m punishments C7. Committed 7m E2 Earned 2m pun. YC. Yellow cards R/B Red/Blue cards Blk. Blocks S Starting Line-up



24th IHF Women's Junior (U20) World Championship



Final Round, 25-28. place

Match Team Statistics

Match No. 89

Iran 17 - 29 Czechia

(4 - 16) (13 - 13)

27.6.2024. 11:15

Attendance: 67

Sport Centre Jane Sandanski

Referees: Vesna Balvan (BIH) / Tatjana Prastalo (BIH)

Shot distribution by player

4 F. Merikh

	2/2	1/1
	0/1	2/2
1/2		3/3

1 miss. 1 block

7 S. Zangeneh

11 E. Nikan

2/2		1/1

14 A. Bahmaei

1 miss. 1/1 lob

21 H. Arianfar

24 A. Badvi

29 S. Nosoohi

0/1		
0/1		
0/1	1/1	

49 S. Ghazanfari

72 Z. Fotovati

0/1		
0/1		

76 N.

		0/1
		0/1
0/1		2/2

2 miss. 1 block

87 F. Shanin

88 M. Oshaghi

1/1		

1 miss.

90 S. Dehghani

TOTAL

0/2	2/2	1/2
0/2	0/1	2/3
4/7	1/1	6/6

5 miss. 2 block 1/1 lob

Saves distribution goalkeepers

12 E.

Yarmohammadtou

2/2	3/4	3/7
0/4		1/2
2/7	1/6	0/4

33 M. Shabani

Kouhbanani

0/1		

96 G. Mehri

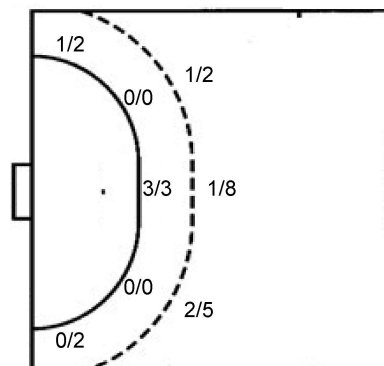
		0/1

TOTAL

2/2	3/4	3/7
0/5		1/2
2/7	1/6	0/5

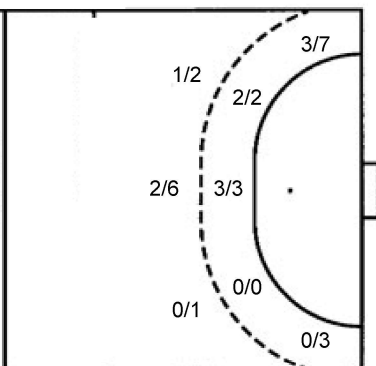
Shots by position

ATTACK



7m penalties 2/2
Fastbreak 0/1
Breakthrough 7/9
Long dist. 0/0

DEFENSE



7m penalties 2/2
Fastbreak 8/13
Breakthrough 7/16
Long dist. 1/2

Shooting statistics

Position	Goals	Sav.	Miss.	Post	Blk.	Total	%
Back (9m)	4	7	2	0	2	15	27
Line (6m)	3	0	0	0	0	3	100
Wing	1	2	1	0	0	4	25
7m penalties	2	0	0	0	0	2	100
Fastbreak	0	0	1	0	0	1	0
Breakthrough	7	1	1	0	0	9	78
Total	17	10	5	0	2	34	50

Jersey number Tot. Total shooting 6m 6m (line) shooting 9m 9m shooting Wng Wing shooting FB Fastbreak sh. 7m 7m penalty sh.
Brk. Breakthrough sh. LD Long distance sh. As. Assists PC Pass clear chance E7 Earned 7m pen. TF Technical faults St. Steals
2m 2m punishments C7. Committed 7m E2 Earned 2m pun. YC. Yellow cards R/B Red/Blue cards Blk. Blocks S Starting Line-up

Handball statistics and livescore by Toma-soft ltd (www.toma-soft.hr)



24th IHF Women's Junior (U20) World Championship



Final Round, 25-28. place

Match Team Statistics

Match No. 89

Iran 17 - 29 Czechia

(4 - 16) (13 - 13)

27.6.2024. 11:15

Attendance: 67

Sport Centre Jane Sandanski

Referees: Vesna Balvan (BIH) / Tatjana Prastalo (BIH)

Czechia

#	Surname and name	S	Goals / shots								Attack					Def.			Penalties				TP					
			Tot.	%	9m	6m	Wing	7m	FB	Brk.	LD	As.	PC	E7	E2	TF	St.	C7	Blk	YC	2m	R		B				
4	KUBALKOVÁ Anna		2/5	40						1/2	1/3		1	3	1	1		4										28:49
5	GABRHELOVÁ Veronika		1/2	50							1/2		1	1						1								17:08
9	SCHREIBMEIEROVÁ Simona	S	5/6	83	2/2				1/1	1/1	1/2		2	1		1	3			1								41:02
10	SKÁCELOVÁ Marcela	S	0/2	0				0/1		0/1								1	1									25:38
11	BRABCOVÁ Adéla		1/1	100			1/1																					8:36
13	PEJŠOVÁ Karolína		1/1	100			1/1																					11:03
15	JESTŘÍBKOVÁ Anna	S	4/6	67			3/3			0/2			1/1	2	1		1											40:21
16	STOJAROVÁ Kristýna												1															28:34
17	MAZÁNKOVÁ Adéla		0/3	0			0/1		0/1	0/1																		12:35
18	PANOŠKOVÁ Tereza	S	3/4	75					2/3		1/1								1									36:26
19	VÁVROVÁ Veronika	S	3/9	33	0/3			1/1	1/1	1/4			4	1		1	1	2	1									43:38
20	KAPUSNIAKOVÁ Šárka		3/6	50			1/4		2/2				1															23:34
22	KRAUTEROVÁ Tereza	S	3/4	75	0/1				1/1	2/2					1				1									32:01
24	BEHENSKÁ Sofie		1/2	50			0/1		1/1								1											19:43
25	ŘADOVÁ Eliška		2/5	40	1/3					1/2			1	4		1	2											20:52
27	WIZUROVÁ Patricie	S	0/1	0										2														30:00
	Team / bench																											
	UKUPNO		29/57	51	3/9	5/5	3/10	2/2	8/13	7/16	1/2		13	13	2	4	8	9	2	2	0	3	0	0				

#	Surname and name	Saves / shots								
		Tot.	%	9m	6m	Wing	7m	FB	Brk.	LD
16	STOJAROVÁ Kristýna	3/16	19	3/7	0/2	0/1	0/2		0/4	
27	WIZUROVÁ Patricie	7/11	64	4/4	0/1	2/2			1/4	
	TOTAL	10/27	37	7/11	0/3	2/3	0/2	3/0	1/8	0/0

Coach: Dušan Poloz

Number of attacks: 62, Efficiency: 47%, Average Duration: 18.71 seconds

Attack by type of defense

	Shots	9m	6m	Wing	TF	E7	E2
On def. 6-0	10/17	3/5	3/3	3/4	3	1	2
On def. 5-1	8/22	0/4	2/2	0/5	5	1	2
Fastbreak	8/13				0	0	0

Defense by type

	Total	9m	6m	Wing	Stl.	C7	2m
Def. 6-0	5/13	1/5	1/1	1/4	1	0	0
Def. 5-1	5/12	1/7	1/1	0/0	6	0	0
Def. 3-2-1	5/6	2/3	1/1	0/0	2	2	0
Fastbreak	0/1				0	0	3

Attack with superiority / minority / goalkeeper out

	Attack				Reaction		
	Att.	Eff.	Shots	TF	FB	LD	Tot.
6 on 6 (GK out)	3	33%	1/3	0	0/0	0/0	0/0
6 on 6	47	43%	20/39	8			
5 on 6	3	67%	2/3	0			
6 on 5	8	63%	5/8	0			
5 on 5	1	100%	1/1	0			

Player superiority / GK out counted at the end of attack (in case it changes during attack)

Defense with superiority / minority / goalkeeper out

	Attack				Reaction		
	Att.	Eff.	Shots	TF	FB	LD	Tot.
7 on 6 (GK out)	11	55%	6/7	4	2/2	0/0	2/2
7 on 5 (GK out)	4	50%	2/2	2	0/0	1/2	1/2
6 on 6 (GK out)	4	25%	1/3	1	0/0	0/0	0/0
6 on 6	38	18%	7/17	21			
6 on 5	3	33%	1/3	0			
5 on 6	1	0%	0/0	1			
5 on 5	1	0%	0/0	1			

Numbers show attacking numbers of opponent. Lower efficiency of opponent means better defense of this team

Jersey number Tot. Total shooting 6m 6m (line) shooting 9m 9m shooting Wng Wing shooting FB Fastbreak sh. 7m 7m penalty sh.
 Brk. Breakthrough sh. LD Long distance sh. As. Assists PC Pass clear chance E7 Earned 7m pen. TF Technical faults St. Steals
 2m 2m punishments C7. Committed 7m E2 Earned 2m pun. YC. Yellow cards R/B Red/Blue cards Blk. Blocks S Starting Line-up



24th IHF Women's Junior (U20) World Championship



Final Round, 25-28. place

Match Team Statistics

Match No. 89

Iran 17 - 29 Czechia

(4 - 16) (13 - 13)

27.6.2024. 11:15

Attendance: 67

Sport Centre Jane Sandanski

Referees: Vesna Balvan (BIH) / Tatjana Prastalo (BIH)

Shot distribution by player

4 A. Kubálková

0/2		
	1/1	
	1/1	

1 post

5 V. Gabrhelová

		0/1
	1/1	

9 S. Schreibeimerová

1/1		
1/2	1/1	2/2

10 M. Skácelová

2 post

11 A. Brabcová

1/1		

13 K. Pejšová

1/1		

15 A. Jestříbková

		1/2
	1/1	1/1
0/1	1/1	

17 A. Mazánková

		0/1

1 post 1 miss.

18 T. Panošková

	1/2	2/2

19 V. Vávrová

	0/1	
1/1		0/1
1/1		1/1

2 post 2 miss.

20 Š. Kapusniaková

	0/1	
1/1		1/1

1 post 1 miss. 1/1 lob

22 T. Kráuterová

1/1	1/1	1/1

1 post

24 S. Behenská

1/1	0/1	

25 E. Řádová

		1/1
1/1		

1 post 1 miss. 1 block

TOTAL

0/2	1/4	4/7
5/5	2/2	1/2
5/7	5/6	5/5

9 post 5 miss. 1 block 1/1 lob

Saves distribution goalkeepers

16 K. Stojarová

1/1	0/1	0/1
1/1		1/3
0/3	0/1	0/4

27 P. Wizurová

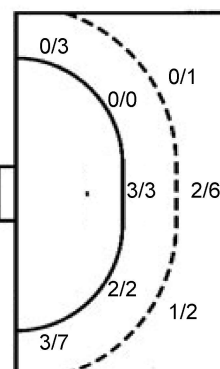
1/1	0/1	1/1
1/1	1/1	
3/4		0/2

TOTAL

2/2	0/2	1/2
2/2	1/1	1/3
3/7	0/1	0/6

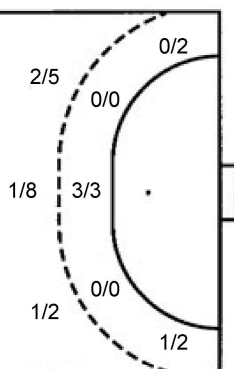
Shots by position

ATTACK



7m penalties	2/2
Fastbreak	8/13
Breakthrough	7/16
Long dist.	1/2

DEFENSE



7m penalties	2/2
Fastbreak	0/1
Breakthrough	7/9
Long dist.	0/0

Shooting statistics

Position	Goals	Sav.	Miss.	Post	Blk.	Total	%
Back (9m)	3	1	1	3	1	9	33
Line (6m)	5	0	0	0	0	5	100
Wing	3	3	1	3	0	10	30
7m penalties	2	0	0	0	0	2	100
Fastbreak	8	3	0	2	0	13	62
Breakthrough	7	5	3	1	0	16	44
Total	28	12	5	9	1	55	51

Jersey number Tot. Total shooting 6m 6m (line) shooting 9m 9m shooting Wng Wing shooting FB Fastbreak sh. 7m 7m penalty sh.
 Brk. Breakthrough sh. LD Long distance sh. As. Assists PC Pass clear chance E7 Earned 7m pen. TF Technical faults St. Steals
 2m 2m punishments C7. Committed 7m E2 Earned 2m pun. YC. Yellow cards R/B Red/Blue cards Blk. Blocks S Starting Line-up

Handball statistics and livescore by Toma-soft ltd (www.toma-soft.hr)



24th IHF Women's Junior (U20) World Championship



Final Round, 25-28. place

Match Team Statistics

Match No. 89

Iran 17 - 29 Czechia

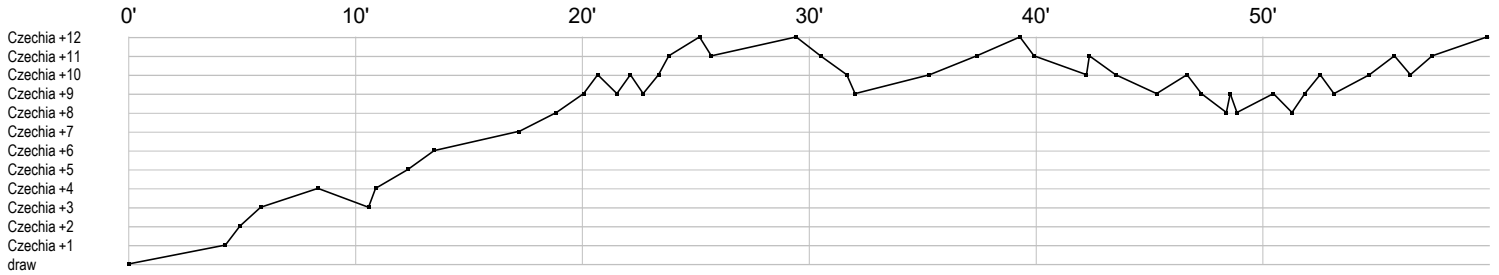
(4 - 16) (13 - 13)

27.6.2024. 11:15

Attendance: 67

Sport Centre Jane Sandanski

Referees: Vesna Balvan (BIH) / Tatjana Prastalo (BIH)



Iran

4 Merikh F	t t t	a f t	f g t	g p	p f g	f g g g	g	a gi g
7 Zangeneh S		t	t					
11 Nikan E	t 2	g2			g	t	g	
12 Yarmohammadi	r r r	r s r	r s s r r	r s	srr s r	sr	r s r r	r s r s r r r r r s r
14 Bahmaei A	tb	t	t	t				g f
21 Arianfar H								
24 Badvi A				t	b t t t			
29 Nosoohi S		t	t f	t	a f		g	p f t
33 Shabani			r					
49 Ghazanfari S								
72 Fotovati Z				f b f			e	
76 Koudzarifarahani	f p	f f	fit	f t gc t			t a g	t f 2
87 Shanin F								t
88 Oshaghi M	f			t	g	c	x ei	t
90 Deghani S								2
96 Mehri G								

Czechia

4 Kubálková A		b b	g	bg e	f p f		f	a p b i p
5 Gabrhelová V				f	a g p x		2	
9 Schreibeierová	t g a xg	t a 2			p t g			gi f
10 Skácelová M			bf				f 2c	
11 Brabcová A								g
13 Pejšová K			g					
15 Jestřibková A	t	g f	g a af		p		g g	
16 Stojarová K					r r r s	r r r r r r r r	r sar	s r
17 Mazánková A					f f	f		
18 Panošková T		g	g g			b	f	
19 Vávrová V	p f f ai		f	g bg	a		c t	f f g f a
20 Kapusniaková				g	f fg			a g f
22 Kráuterová T		f			e bg g g			
24 Behenská S				f t				g
25 Řádová E		i		g a p f t	p f	t p p fg		
27 Wizurová P		s p	r s f ps s	sr r	r s s			

In game	g Goal scored	f Missed shot	a Assist	t Technical faults	b Steal
2 2min suspension	e Earned 7m	c Committed 7m	y Yellow card	r Red Card	k Blue card
i Earned 2min.	x Block	4 4min suspension	p Pass for clear chance	s Saved shot	r Received goal