



24th IHF Women's Junior (U20) World Championship



Final Round, 17-20. place

Match Team Statistics

Match No. 86

Japan 27 - 30 Angola

(13 - 15) (14 - 15)

27.6.2024. 09:30

Attendance: 30

Sport Centre Jane Sandanski

Hall 2

Referees: Jacob Pagh (DEN) / Karl Thygesen (DEN)

Japan

#	Surname and name	S	Goals / shots									Attack					Def.			Penalties				TP						
			Tot.	%	9m	6m	Wing	7m	FB	Brk.	LD	As.	PC	E7	E2	TF	St.	C7	Bik	YC	2m	R	B							
1	KITABAYASHI Riri	S	0/1	0											0/1		1													47:30
3	HOKAGUCHI Wakana		0/1	0				0/1									1													30:00
5	KOYAMA Ayumu		4/9	44	0/1		1/1	2/3	0/2	1/2						1	2	1												30:17
6	MIZUTANI Miu																													6:54
7	HASHIMOTO Mao	S	1/4	25			0/3	1/1									1	2												29:50
8	ROKUGAWA Ayumi		1/5	20	0/2	0/1								1/2	2	2	1		1	1										30:00
9	SEKINO Ayano																													
10	KONYA Risa	S	5/7	71	0/2			3/3		2/2					2	2		1	4											30:44
11	AZUMA Konoka	S	2/4	50			2/3		0/1								1													27:40
12	HORIUCHI Yukiha													1																11:26
14	OKUMURA Yusa	S	4/7	57	1/3				3/3	0/1					4	1		2												40:46
15	YAMAGUCHI Toko		5/9	56	0/3		1/1		0/1	2/2	2/2	2						1												29:54
18	SASAKI Ayaka		2/2	100			2/2								1				1											18:33
22	KAWASAKI Miu	S	1/3	33	0/1					1/2				3						1	2									29:51
23	NAKAO Ai		1/2	50		1/1										1	1													30:00
25	KATO Mao	S	1/1	100		1/1													1											26:09
	Team / bench																													
	UKUPNO		27/55	49	1/12	2/3	6/11	6/7	3/7	6/9	3/6	12	11	7	4	10	2	1	3	0	1	0	0							

Goalkeepers		Saves / shots								
#	Surname and name	Tot.	%	9m	6m	Wing	7m	FB	Brk.	LD
1	KITABAYASHI Riri	7/31	23	3/14	0/3	2/2	0/1			2/11
12	HORIUCHI Yukiha	2/8	25	1/5	0/1					1/2
	TOTAL	9/39	23	4/19	0/4	2/2	0/1	0/0	3/13	0/0

Coach: Satoshi Kawai

Number of attacks: 64, Efficiency: 42%, Average Duration: 22.61 seconds

Attack by type of defense

	Shots	9m	6m	Wing	TF	E7	E2
On def. 6-0	13/33	1/12	2/3	4/9	10	7	4
Fastbreak	3/7				0	0	0

Defense by type

	Total	9m	6m	Wing	Stl.	C7	2m
Def. 6-0	25/48	13/30	4/5	0/3	2	1	0
Def. 3-3	4/7	2/4	0/0	0/0	0	0	0
Fastbreak	0/0				0	0	1

Attack with superiority / minority / goalkeeper out

	Attack				Reaction		
	Att.	Eff.	Shots	TF	FB	LD	Tot.
7 on 6 (GK out)	3	33%	1/1	2	0/0	0/1	0/1
6 on 6 (GK out)	2	0%	0/2	0	0/0	0/0	0/0
6 on 6	49	37%	18/41	8			
6 on 5	10	80%	8/10	0			

Player superiority / GK out counted at the end of attack (in case it changes during attack)

Defense with superiority / minority / goalkeeper out

	Attack				Reaction		
	Att.	Eff.	Shots	TF	FB	LD	Tot.
7 on 6 (GK out)	15	40%	6/13	2	0/1	1/4	1/5
6 on 6 (GK out)	7	29%	2/5	2	0/1	2/2	2/3
6 on 6	40	53%	21/35	5			
6 on 5	2	50%	1/1	1			

Numbers show attacking numbers of opponent. Lower efficiency of opponent means better defense of this team

Jersey number Tot. Total shooting 6m 6m (line) shooting 9m 9m shooting Wng Wing shooting FB Fastbreak sh. 7m 7m penalty sh.
 Brk. Breakthrough sh. LD Long distance sh. As. Assists PC Pass clear chance E7 Earned 7m pen. TF Technical faults St. Steals
 2m 2m punishments C7. Committed 7m E2 Earned 2m pun. YC. Yellow cards R/B Red/Blue cards Blk. Blocks S Starting Line-up



24th IHF Women's Junior (U20) World Championship



Final Round, 17-20. place

Match Team Statistics

Match No. 86

Japan 27 - 30 Angola

(13 - 15) (14 - 15)

27.6.2024. 09:30

Attendance: 30

Sport Centre Jane Sandanski

Hall 2

Referees: Jacob Pagh (DEN) / Karl Thygesen (DEN)

Shot distribution by player

3 W. Hokaguchi

0/1		

5 A. Koyama

0/1		2/2
0/1		
1/1		1/1

2 post 1 miss.

6 M. Mizutani

7 M. Hashimoto

	0/1	
1/1		0/1

1 post

8 A. Rokugawa

	1/1	

2 miss. 2 block

9 A. Sekino

10 R. Konya

2/2		
2/2	0/1	1/2

11 K. Azuma

1/1		0/1
		1/1
0/1		

14 Y. Okumura

1/1		3/3

2 post 1 miss.

15 T. Yamaguchi

	1/1	
	1/1	
3/3		0/1

1 post 2 block

18 A. Sasaki

		1/1

1/1 lob

22 M. Kawasaki

		0/2

1/1 lob

23 A. Nakao

1 miss. 1/1 lob

25 M. Kato

1/1		

TOTAL

1/2	1/1	2/3
2/3	1/2	2/4
9/11	1/2	5/8

6 post 5 miss. 4 block 3/3 lob

Saves distribution goalkeepers

1 R. Kitabayashi

0/3	0/1	1/4
0/1		
4/8	0/1	2/12

12 Y. Horiuchi

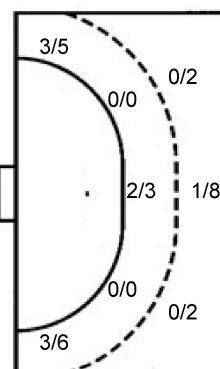
0/1	0/2	
0/1		
		2/3

TOTAL

0/4	0/3	1/4
0/2		
4/8	0/1	4/15

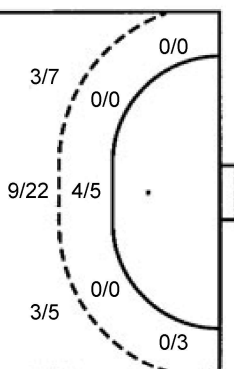
Shots by position

ATTACK



7m penalties	6/7
Fastbreak	3/7
Breakthrough	6/9
Long dist.	3/6

DEFENSE



7m penalties	1/1
Fastbreak	0/0
Breakthrough	10/13
Long dist.	0/1

Shooting statistics

Position	Goals	Sav.	Miss.	Post	Blk.	Total	%
Back (9m)	1	3	2	2	4	12	8
Line (6m)	2	0	1	0	0	3	67
Wing	6	4	0	1	0	11	55
7m penalties	6	1	0	0	0	7	86
Fastbreak	3	3	0	1	0	7	43
Breakthrough	6	1	0	2	0	9	67
Total	24	12	3	6	4	49	49

Jersey number Tot. Total shooting 6m 6m (line) shooting 9m 9m shooting Wng Wing shooting FB Fastbreak sh. 7m 7m penalty sh.
 Brk. Breakthrough sh. LD Long distance sh. As. Assists PC Pass clear chance E7 Earned 7m pen. TF Technical faults St. Steals
 2m 2m punishments C7. Committed 7m E2 Earned 2m pun. YC. Yellow cards R/B Red/Blue cards Blk. Blocks S Starting Line-up

Handball statistics and livescore by Toma-soft ltd (www.toma-soft.hr)



24th IHF Women's Junior (U20) World Championship



Final Round, 17-20. place

Match Team Statistics

Match No. 86

Japan 27 - 30 Angola

(13 - 15) (14 - 15)

27.6.2024. 09:30

Attendance: 30

Sport Centre Jane Sandanski

Hall 2

Referees: Jacob Pagh (DEN) / Karl Thygesen (DEN)

Angola

Players		Goals / shots										Attack					Def.			Penalties				TP	
#	Surname and name	S	Tot.	%	9m	6m	Wing	7m	FB	Brk.	LD	As.	PC	E7	E2	TF	St.	C7	Blk	YC	2m	R	B		
1	MULAMBA Carla Nkonko Jaime	S																							48:56
3	GERALDO Ivandra Josefa Manico		0/2	0			0/2																		12:49
4	TATI Marcela Gonçalves																	1							34:00
6	LUANGO Elisandra Vunge		0/1	0						0/1				1		1									15:27
7	BELO Bernardeth Carla	S	11/24	46	4/17			1/1		6/6							2				1				55:33
8	MATOS Rosa Maria Muhongo																	1							28:24
9	PEDRO Elisandra Guilhermina Paulino		2/3	67		1/2				1/1							1								31:34
10	CAPESSA Marisoni Julieta Bernardo	S																1							5:14
13	NUNDA Balbina Cassova Afonso	S	9/9	100	6/6					3/3		3	2			3	1	1				1			50:41
15	FERNANDO Sandy Da Conceicao C. Gomes	S	3/4	75	1/1	2/2					0/1						1								37:32
16	DALA Juliana Queta																								0:17
19	XAVIER Maude Kumbembe Bartolomeu																								
20	SIMOES Isabel Batalha De Almeida																								
31	PEDRO Lurdes Manuel	S	2/5	40	1/2	1/1	0/1			0/1		1	1		1			1					2		43:04
35	CARVALHO Anissia Maria Antonio De																	1							8:00
77	TUMBA Jorcela Mutoca Varanda	S	3/9	33	3/8					0/1						3	1				4				48:29
Team / bench																									
UKUPNO			30/57	53	15/34	4/5	0/3	1/1	0/0	10/13	0/1	4	3	1	1	10	3	7	4	0	4	0	0		

Goalkeepers		Saves / shots									
#	Surname and name	Tot.	%	9m	6m	Wing	7m	FB	Brk.	LD	
1	MULAMBA Carla Nkonko Jaime	12/35	34	3/4	0/2	4/10	1/6	3/6	1/7		
16	DALA Juliana Queta	0/1	0				0/1				
TOTAL		12/36	33	3/4	0/2	4/10	1/7	3/6	1/7	0/0	

Coach: Jose Terça Chuma

Number of attacks: 64, Efficiency: 47%, Average Duration: 33.38 seconds

Attack by type of defense

	Shots	9m	6m	Wing	TF	E7	E2
On def. 6-0	25/48	13/30	4/5	0/3	10	1	1
On def. 3-3	4/7	2/4	0/0	0/0	0	0	0
Fastbreak	0/0				0	0	0

Defense by type

	Total	9m	6m	Wing	Stl.	C7	2m
Def. 6-0	13/33	1/12	2/3	4/9	3	7	0
Fastbreak	3/7				0	0	4

Attack with superiority / minority / goalkeeper out

	Attack				Reaction		
	Att.	Eff.	Shots	TF	FB	LD	Tot.
7 on 6 (GK out)	15	40%	6/13	2	0/1	1/4	1/5
6 on 6 (GK out)	7	29%	2/5	2	0/1	2/2	2/3
6 on 6	40	53%	21/35	5			
6 on 5	2	50%	1/1	1			

Player superiority / GK out counted at the end of attack (in case it changes during attack)

Defense with superiority / minority / goalkeeper out

	Attack				Reaction		
	Att.	Eff.	Shots	TF	FB	LD	Tot.
7 on 6 (GK out)	3	33%	1/1	2	0/0	0/1	0/1
6 on 6 (GK out)	2	0%	0/2	0	0/0	0/0	0/0
6 on 6	49	37%	18/41	8			
6 on 5	10	80%	8/10	0			

Numbers show attacking numbers of opponent. Lower efficiency of opponent means better defense of this team

Jersey number Tot. Total shooting 6m 6m (line) shooting 9m 9m shooting Wng Wing shooting FB Fastbreak sh. 7m 7m penalty sh.
 Brk. Breakthrough sh. LD Long distance sh. As. Assists PC Pass clear chance E7 Earned 7m pen. TF Technical faults St. Steals
 2m 2m punishments C7. Committed 7m E2 Earned 2m pun. YC. Yellow cards R/B Red/Blue cards Blk. Blocks S Starting Line-up



24th IHF Women's Junior (U20) World Championship



Final Round, 17-20. place

Match Team Statistics

Match No. 86

Japan 27 - 30 Angola

(13 - 15) (14 - 15)

27.6.2024. 09:30

Attendance: 30

Sport Centre Jane Sandanski

Hall 2

Referees: Jacob Pagh (DEN) / Karl Thygesen (DEN)

Shot distribution by player

3 I. Geraldo

		0/1

1 miss.

4 M. Tati

6 E. Luango

		0/1

7 B. Belo

1/1	1/1	1/1
1/1		
2/4		5/7

4 post 4 miss. 1 block

8 R. Matos

9 E. Pedro

1/1		1/1

1 post

10 M. Capessa

13 B. Nunda

3/3	1/1	
1/1		
1/1	1/1	2/2

15 S. Fernando

	1/1	

1 miss. 2/2 lob

19 M. Xavier

20 I. Simoes

31 L. Pedro

		2/2
0/2		

1 block

35 A. Carvalho

77 J. Tumba

		3/4

1 post 3 miss. 1 block

TOTAL

4/4	3/3	3/4
2/2		
4/8	1/1	11/15

6 post 9 miss. 3 block 2/2 lob

Saves distribution goalkeepers

1 C. Mulamba

1/2		1/2
1/3	1/1	2/4
2/11	1/1	3/8

16 J. Dala

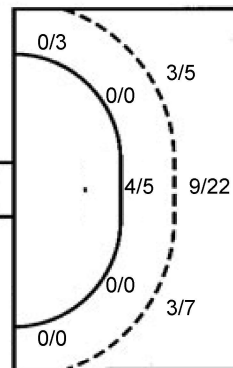
		0/1

TOTAL

1/2		1/3
1/3	1/1	2/4
2/11	1/1	3/8

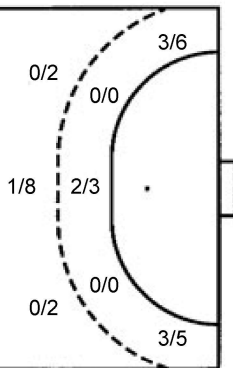
Shots by position

ATTACK



7m penalties	1/1
Fastbreak	0/0
Breakthrough	10/13
Long dist.	0/1

DEFENSE



7m penalties	6/7
Fastbreak	3/7
Breakthrough	6/9
Long dist.	3/6

Shooting statistics

Position	Goals	Sav.	Miss.	Post	Blk.	Total	%
Back (9m)	15	4	7	5	3	34	44
Line (6m)	4	0	0	1	0	5	80
Wing	0	2	1	0	0	3	0
7m penalties	1	0	0	0	0	1	100
Fastbreak	0	0	0	0	0	0	0
Breakthrough	10	3	0	0	0	13	77
Total	30	9	8	6	3	56	54

Jersey number Tot. Total shooting 6m 6m (line) shooting 9m 9m shooting Wng Wing shooting FB Fastbreak sh. 7m 7m penalty sh.
 Brk. Breakthrough sh. LD Long distance sh. As. Assists PC Pass clear chance E7 Earned 7m pen. TF Technical faults St. Steals
 2m 2m punishments C7. Committed 7m E2 Earned 2m pun. YC. Yellow cards R/B Red/Blue cards Blk. Blocks S Starting Line-up

Handball statistics and livescore by Toma-soft ltd (www.toma-soft.hr)



24th IHF Women's Junior (U20) World Championship



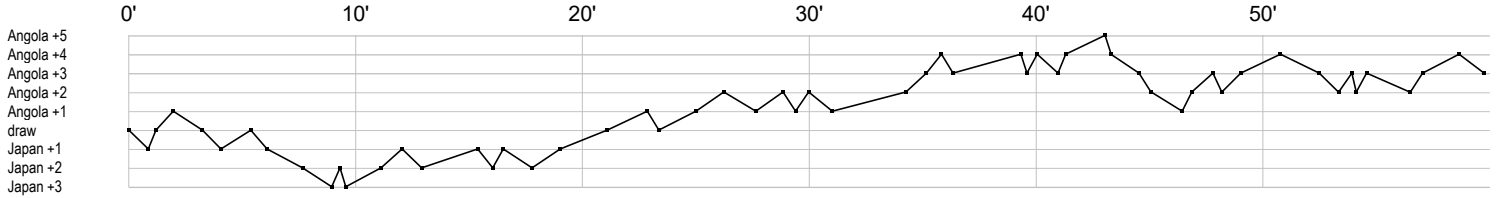
Final Round, 17-20. place

Match Team Statistics
Match No. 86

Japan 27 - 30 Angola
(13 - 15) (14 - 15)

27.6.2024. 09:30
Attendance: 30
Sport Centre Jane Sandanski
Hall 2

Referees: Jacob Pagh (DEN) / Karl Thygesen (DEN)



Japan

1 Kitabayashi R	r r r sr s r r r r s r r r r s r r	t r ps r r r f r s r r s r r
3 Hokaguchi W		f e
5 Koyama A	g g	f p f g f f g e f a p
6 Mizutani M		
7 Hashimoto M	eig f f f i	
8 Rokugawa A		f t a p e b g f p ff x
9 Sekino A		
10 Konya R	t g a t t t i pp a f f g	g g g
11 Azuma K	g e f f g	
12 Horiuchi Y	a	s s r r r r r r r
14 Okumura Y	f e g g p p f p g f t t g p	
15 Yamaguchi T		g f f a f g g a t g g f
18 Sasaki A		t a g g
22 Kawasaki M	a a x g x f f c a	
23 Nakao A		g ei f
25 Kato M	g b 2	

Angola

1 Mulamba C	r r r r r r r s r s s r s r s r s r s r s r s r s r r r r r r r r r r r r r r r r r	
3 Geraldo I		f f
4 Tati M	c	
6 Luango E		e t f
7 Belo B	g f f f g f t g f g f g f f g f f g g g g f f f g t g f	2c
8 Matos R		c
9 Pedro E		g t f g
10 Capessa M		c
13 Nunda B	a t pg a g 2c	p g b g a t g g g t g g
15 Fernando S	g g	bf g
16 Dala J		r
19 Xavier M		
20 Simoes I		
31 Pedro L	c ff 2 a gp	2 g f
35 Carvalho A		c
77 Tumba J	g t f	t f xgx f xb g f tf x f

In game	g Goal scored	f Missed shot	a Assist	t Technical faults	b Steal
2 2min suspension	e Eearned 7m	c Committed 7m	y Yellow card	r Red Card	k Blue card
i Eearned 2min.	x Block	4 4min suspension	p Pass for clear chance	s Saved shot	r Received goal