



# 24th IHF Women's Junior (U20) World Championship



Final Round, 13-16. place

Match Team Statistics

Match No. 83

Egypt 25 - 20 China

(13 - 12) (12 - 8)

27.6.2024. 13:30

Attendance: 31

Sport Centre Boris Trajkovski

Referees: Raymel Reyes (CUB) / Alexys Zuniga (CUB)

## Egypt

Players			Goals / shots									Attack					Def.			Penalties				TP	
#	Surname and name	S	Tot.	%	9m	6m	Wing	7m	FB	Brk.	LD	As.	PC	E7	E2	TF	St.	C7	Blk	YC	2m	R	B		
2	MOHAMED SONBOL Mona																								
4	ASHRAF ELBARKY Sara		2/3	67					2/2	0/1								2				1			25:24
5	AHMED ABDELFAATTAH Nawal																								
8	OMAR IBRAHIM Mariam	S	8/12	67	0/1		3/4		4/6	1/1		2				1	2								59:33
9	MAHMOUD ELSHEREF Shrouk		6/9	67	0/1	1/1		3/3		2/4		3		1				1							40:31
11	OSAMA ABDALLA Lojin	S	0/2	0	0/2							1													4:57
14	HATEM SALAMA Kenzy		2/4	50			2/4								1	1		1							55:02
15	EHAB ABOSHWWEKA Noha											1				1									4:06
17	TAMER ATAWEYA Nada																								
22	KAMEL GADALLAH Touka		4/5	80	1/2					3/3			3			4	1		2		1				48:35
25	AHMED MOHAMED Malak	S	0/1	0	0/1							1		1	1	4									27:26
28	TAREK ABDELRAHMAN Nadein	S										2				2									12:42
89	MAHMOUD ORABY Fatma	S	3/3	100		3/3								1	1	3	4								59:31
96	MOHAMED ELWY Sarah																								0:29
98	WALAE SAYED Gihad	S										2													59:31
99	SALAHELDIN ABDELKADER Jana	S	0/1	0	0/1											3									20:11
	Team / bench																								
	UKUPNO		25/40	63	1/8	4/4	5/8	3/3	6/8	6/9	0/0	12	3	3	3	19	7	4	2	0	2	0	0		

Goalkeepers		Saves / shots									
#.	Surname and name	Tot.	%	9m	6m	Wing	7m	FB	Brk.	LD	
96	MOHAMED ELWY Sarah	0/1	0				0/1				
98	Wael SAYED Gihad	14/33	42	3/6	2/4	1/3	1/3	3/9	4/8		
	TOTAL	14/34	41	3/6	2/4	1/3	1/4	3/9	4/8	0/0	

Coach: Ramy Abdellatif Mohamed

Number of attacks: 58, Efficiency: 43%, Average Duration: 30.48 seconds

## Attack by type of defense

	Shots	9m	6m	Wing	TF	E7	E2
On def. 6-0	14/26	1/8	4/4	5/8	17	3	3
On def. press.	2/2	0/0	0/0	0/0	2	0	0
Fastbreak	6/8				0	0	0

## Defense by type

	Total	9m	6m	Wing	Stl.	C7	2m
Def. 6-0	10/27	3/12	2/3	2/5	7	4	0
Fastbreak	6/10				0	0	2

## Attack with superiority / minority / goalkeeper out

	Attack				Reaction		
	Att.	Eff.	Shots	TF	FB	LD	Tot.
7 on 6 (GK out)	7	29%	2/3	4	1/3	0/0	1/3
7 on 5 (GK out)	1	100%	1/1	0	0/0	0/0	0/0
6 on 6	41	41%	17/28	13			
6 on 5	5	80%	4/5	0			
5 on 6	4	25%	1/2	2			

Player superiority / GK out counted at the end of attack (in case it changes during attack)

## Defense with superiority / minority / goalkeeper out

	Attack				Reaction		
	Att.	Eff.	Shots	TF	FB	LD	Tot.
7 on 6 (GK out)	5	40%	2/3	2	0/0	0/0	0/0
6 on 6	46	33%	15/29	17			
5 on 6	4	25%	1/3	1			
6 on 5	4	50%	2/3	1			
5 on 5	1	0%	0/0	1			

Numbers show attacking numbers of opponent. Lower efficiency of opponent means better defense of this team

#	Jersey number	Tot.	Total shooting	6m	6m (line) shooting	9m	9m shooting	Wng	Wing shooting	FB	Fastbreak sh.	7m	7m penalty sh.
Brk.	Breakthrough sh.	LD	Long distance sh.	As.	Assists	PC	Pass clear chance	E7	Earned 7m pen.	TF	Technical faults	St.	Steals
2m	2m punishments	C7.	Committed 7m	E2	Earned 2m pun.	YC.	Yellow cards	R/B	Red/Blue cards	Blk.	Blocks	S	Starting Line-up

Handball statistics and livescore by Toma-soft ltd (www.toma-soft.hr)



# 24th IHF Women's Junior (U20) World Championship



Final Round, 13-16. place

## Match Team Statistics

Match No. 83

**Egypt 25 - 20 China**

(13 - 12) (12 - 8)

27.6.2024. 13:30

Attendance: 31

Sport Centre Boris Trajkovski

Referees: Raymel Reyes (CUB) / Alexys Zuniga (CUB)

## Shot distribution by player

2 M. Mohamed Sonbol


4 S. Ashraf Elbarky

		1/1
	1/2	

5 N. Ahmed Abdelfattah


8 M. Omar Ibrahim

2/4		1/1
2/2	0/1	3/3

1 miss.

9 S. Mahmoud Elsheref

1/1		
1/1		
3/3	0/1	1/1

1 miss. 1 block

11 L. Osama Abdalla

0/1		0/1

14 K. Hatem Salama

		0/1
2/2		

1 miss.

15 N. Ehab Aboshweka


17 N. Tamer Ataweya


22 T. Kamel Gadallah

		1/1
		1/1
1/1		1/1

1 miss.

25 M. Ahmed Mohamed


1 block

28 N. Tarek Abdelrahman


89 F. Mahmoud Oraby

		1/1

2/2 lob

99 J. Salaheldin Abdelkader

0/1		

## TOTAL

1/1		1/1
3/7		3/5
8/8	1/4	6/6

4 miss. 2 block 2/2 lob

## Saves distribution goalkeepers

96 S. Mohamed Elwy

0/1		

98 G. Wael Sayed

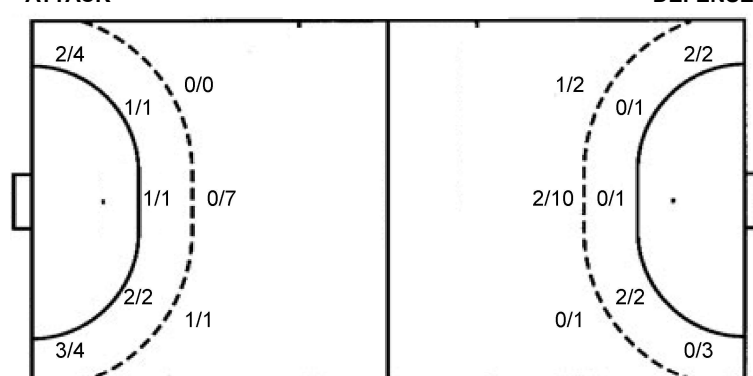
3/4		2/2
2/4	0/3	1/1
3/12	0/1	3/6

## TOTAL

3/4		2/2
2/4	0/3	1/1
3/13	0/1	3/6

## Shots by position

### ATTACK



7m penalties 3/3  
Fastbreak 6/8  
Breakthrough 6/9  
Long dist. 0/0

7m penalties 3/4  
Fastbreak 6/10  
Breakthrough 4/8  
Long dist. 0/0

## Shooting statistics

Position	Goals	Sav.	Miss.	Post	Blk.	Total	%
Back (9m)	1	4	1	0	2	8	13
Line (6m)	4	0	0	0	0	4	100
Wing	5	1	2	0	0	8	63
7m penalties	3	0	0	0	0	3	100
Fastbreak	6	2	0	0	0	8	75
Breakthrough	6	2	1	0	0	9	67
Total	25	9	4	0	2	40	63

#	Jersey number	Tot.	Total shooting	6m	6m (line) shooting	9m	9m shooting	Wng	Wing shooting	FB	Fastbreak sh.	7m	7m penalty sh.
Brk.	Breakthrough sh.	LD	Long distance sh.	As.	Assists	PC	Pass clear chance	E7	Earned 7m pen.	TF	Technical faults	St.	Steals
2m	2m punishments	C7.	Committed 7m	E2	Earned 2m pun.	YC.	Yellow cards	R/B	Red/Blue cards	Blk.	Blocks	S	Starting Line-up

Handball statistics and livescore by Toma-soft ltd (www.toma-soft.hr)



# 24th IHF Women's Junior (U20) World Championship



Final Round, 13-16. place

## Match Team Statistics

Match No. 83

Egypt 25 - 20 China

(13 - 12) (12 - 8)

27.6.2024. 13:30

Attendance: 31

Sport Centre Boris Trajkovski

Referees: Raymel Reyes (CUB) / Alexys Zuniga (CUB)

## China

Players		Goals / shots										Attack					Def.			Penalties				TP
#	Surname and name	S	Tot.	%	9m	6m	Wing	7m	FB	Brk.	LD	As.	PC	E7	E2	TF	St.	C7	Blk	YC	2m	R	B	
1	SUN Yihan																							0:16
3	PAN Fengying	S	2/4	50	1/3					1/1		1				4	2	1			1			40:05
5	ZHUO Ziyi																							
6	LIU Ziran																							
7	ZHANG Siyu													2										21:56
8	LIANG Jing		0/4	0	0/3					0/1		1				5		1						18:46
10	SHI Zihan	S	4/7	57		1/1	0/2		3/4			1	1			2	1							59:52
12	YANG Chunfeng	S										2	1											44:31
13	ZHUANG Hongyan		3/7	43	1/2	1/1	0/1	0/1	1/1	0/1			2			3		1						45:37
15	YANG Yue													1		1		1			1			16:36
18	WANG Jingjing	S	1/1	100	1/1											1	1							14:12
20	HOU Changqing	S	1/4	25		0/1			1/3							2	1							43:16
22	LI Luyao												1											15:13
23	WANG Xiaoyun		0/2	0	0/1					0/1			1											17:22
28	LIU Xuedan	S	6/11	55	0/3			3/3	0/1	3/4				1	2	3								43:29
53	LIU Yuting	S	3/4	75		0/1	2/2		1/1							1					1			37:23
	Team / bench																							
	UKUPNO		20/44	45	3/13	2/4	2/5	3/4	6/10	4/8	0/0	5	6	4	2	22	5	3	1	0	3	0	0	

Goalkeepers		Saves / shots									
#	Surname and name	Tot.	%	9m	6m	Wing	7m	FB	Brk.	LD	
1	SUN Yihan										
12	YANG Chunfeng	7/27	26	4/5	0/4	1/6	0/1	1/6	1/5		
22	LI Luyao	2/7	29				0/2	1/2	1/3		
	TOTAL	9/34	26	4/5	0/4	1/6	0/3	5/8	2/8	0/0	

Coach: Suzana Lazovic

Number of attacks: 60, Efficiency: 33%, Average Duration: 30.17 seconds

## Attack by type of defense

	Shots	9m	6m	Wing	TF	E7	E2
On def. 6-0	10/27	3/12	2/3	2/5	22	4	2
Fastbreak	6/10				0	0	0

## Attack with superiority / minority / goalkeeper out

	Attack				Reaction		
	Att.	Eff.	Shots	TF	FB	LD	Tot.
7 on 6 (GK out)	5	40%	2/3	2	0/0	0/0	0/0
6 on 6	46	33%	15/29	17			
5 on 6	4	25%	1/3	1			
6 on 5	4	50%	2/3	1			
5 on 5	1	0%	0/0	1			

Player superiority / GK out counted at the end of attack (in case it changes during attack)

## Defense by type

	Total	9m	6m	Wing	Stl.	C7	2m
Def. 6-0	14/26	1/8	4/4	5/8	3	3	0
Def. press.	2/2	0/0	0/0	0/0	2	0	0
Fastbreak	6/8				0	0	3

## Defense with superiority / minority / goalkeeper out

	Attack				Reaction		
	Att.	Eff.	Shots	TF	FB	LD	Tot.
7 on 6 (GK out)	7	29%	2/3	4	1/3	0/0	1/3
7 on 5 (GK out)	1	100%	1/1	0	0/0	0/0	0/0
6 on 6	41	41%	17/28	13			
6 on 5	5	80%	4/5	0			
5 on 6	4	25%	1/2	2			

Numbers show attacking numbers of opponent. Lower efficiency of opponent means better defense of this team

#	Jersey number	Tot.	Total shooting	6m	6m (line) shooting	9m	9m shooting	Wng	Wing shooting	FB	Fastbreak sh.	7m	7m penalty sh.
Brk.	Breakthrough sh.	LD	Long distance sh.	As.	Assists	PC	Pass clear chance	E7	Earned 7m pen.	TF	Technical faults	St.	Steals
2m	2m punishments	C7.	Committed 7m	E2	Earned 2m pun.	YC.	Yellow cards	R/B	Red/Blue cards	Blk.	Blocks	S	Starting Line-up

Handball statistics and livescore by Toma-soft ltd (www.toma-soft.hr)



# 24th IHF Women's Junior (U20) World Championship



Final Round, 13-16. place

## Match Team Statistics

Match No. 83

**Egypt 25 - 20 China**

(13 - 12) (12 - 8)

27.6.2024. 13:30

Attendance: 31

Sport Centre Boris Trajkovski

Referees: Raymel Reyes (CUB) / Alexys Zuniga (CUB)

## Shot distribution by player

<b>3 F. Pan</b>	<b>5 Z. Zhuo</b>	<b>6 Z. Liu</b>	<b>7 S. Zhang</b>	<b>8 J. Liang</b>	<b>10 Z. Shi</b>	<b>13 H. Zhuang</b>																																																															
<table><tr><td></td><td></td><td>0/1</td></tr><tr><td></td><td>1/1</td><td></td></tr><tr><td>1/1</td><td></td><td>0/1</td></tr></table>			0/1		1/1		1/1		0/1	<table><tr><td></td><td></td><td></td></tr><tr><td></td><td></td><td></td></tr><tr><td></td><td></td><td></td></tr></table>										<table><tr><td></td><td></td><td></td></tr><tr><td></td><td></td><td></td></tr><tr><td></td><td></td><td></td></tr></table>										<table><tr><td></td><td></td><td></td></tr><tr><td></td><td></td><td></td></tr><tr><td></td><td></td><td></td></tr></table>										<table><tr><td></td><td></td><td></td></tr><tr><td>0/1</td><td></td><td></td></tr><tr><td>0/1</td><td></td><td></td></tr></table> 1 miss. 1 block				0/1			0/1			<table><tr><td>0/1</td><td></td><td></td></tr><tr><td>1/1</td><td>2/2</td><td></td></tr><tr><td>1/1</td><td></td><td>0/1</td></tr></table> 1 miss.	0/1			1/1	2/2		1/1		0/1	<table><tr><td></td><td></td><td>0/1</td></tr><tr><td></td><td></td><td></td></tr><tr><td>3/3</td><td></td><td>0/1</td></tr></table> 2 post			0/1				3/3		0/1
		0/1																																																																			
	1/1																																																																				
1/1		0/1																																																																			
0/1																																																																					
0/1																																																																					
0/1																																																																					
1/1	2/2																																																																				
1/1		0/1																																																																			
		0/1																																																																			
3/3		0/1																																																																			
<b>15 Y. Yang</b>	<b>18 J. Wang</b>	<b>20 C. Hou</b>	<b>23 X. Wang</b>	<b>28 X. Liu</b>	<b>53 Y. Liu</b>	<b>TOTAL</b>																																																															
<table><tr><td></td><td></td><td></td></tr><tr><td></td><td></td><td></td></tr><tr><td></td><td></td><td></td></tr></table>										<table><tr><td></td><td></td><td></td></tr><tr><td></td><td></td><td></td></tr><tr><td>1/1</td><td></td><td></td></tr></table>							1/1			<table><tr><td></td><td></td><td></td></tr><tr><td></td><td></td><td>0/1</td></tr><tr><td>0/1</td><td></td><td>1/1</td></tr></table> 1 post						0/1	0/1		1/1	<table><tr><td></td><td></td><td></td></tr><tr><td>0/1</td><td></td><td></td></tr><tr><td></td><td></td><td></td></tr></table> 1 post				0/1						<table><tr><td>1/2</td><td></td><td></td></tr><tr><td>1/1</td><td></td><td></td></tr><tr><td>4/5</td><td></td><td></td></tr></table> 2 miss. 1 block	1/2			1/1			4/5			<table><tr><td>0/1</td><td></td><td></td></tr><tr><td></td><td></td><td></td></tr><tr><td></td><td>1/1</td><td>2/2</td></tr></table>	0/1							1/1	2/2	<table><tr><td>1/4</td><td></td><td>0/2</td></tr><tr><td>2/4</td><td>3/3</td><td>0/1</td></tr><tr><td>10/13</td><td>1/1</td><td>3/6</td></tr></table> 4 post 4 miss. 2 block	1/4		0/2	2/4	3/3	0/1	10/13	1/1	3/6
1/1																																																																					
		0/1																																																																			
0/1		1/1																																																																			
0/1																																																																					
1/2																																																																					
1/1																																																																					
4/5																																																																					
0/1																																																																					
	1/1	2/2																																																																			
1/4		0/2																																																																			
2/4	3/3	0/1																																																																			
10/13	1/1	3/6																																																																			

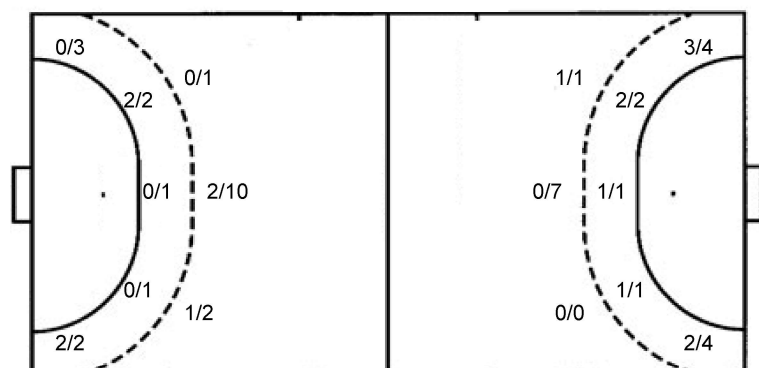
## Saves distribution goalkeepers

<b>1 Y. Sun</b>	<b>12 C. Yang</b>	<b>22 L. Li</b>	<b>TOTAL</b>
	0/1		0/1
	3/6		4/7
	0/6	2/3	0/8
		0/3	3/4
			0/6

## Shots by position

ATTACK

DEFENSE



7m penalties 3/4  
Fastbreak 6/10  
Breakthrough 4/8  
Long dist. 0/0

7m penalties 3/3  
Fastbreak 6/8  
Breakthrough 6/9  
Long dist. 0/0

## Shooting statistics

Position	Goals	Sav.	Miss.	Post	Blk.	Total	%
Back (9m)	3	3	3	2	2	13	23
Line (6m)	2	2	0	0	0	4	50
Wing	2	1	1	1	0	5	40
7m penalties	3	1	0	0	0	4	75
Fastbreak	6	3	0	1	0	10	60
Breakthrough	4	4	0	0	0	8	50
Total	20	14	4	4	2	44	45

#	Jersey number	Tot.	Total shooting	6m	6m (line) shooting	9m	9m shooting	Wng	Wing shooting	FB	Fastbreak sh.	7m	7m penalty sh.
Brk.	Breakthrough sh.	LD	Long distance sh.	As.	Assists	PC	Pass clear chance	E7	Earned 7m pen.	TF	Technical faults	St.	Steals
2m	2m punishments	C7.	Committed 7m	E2	Earned 2m pun.	YC.	Yellow cards	R/B	Red/Blue cards	Blk.	Blocks	S	Starting Line-up

Handball statistics and livescore by Toma-soft ltd (www.toma-soft.hr)

