



# 24th IHF Women's Junior (U20) World Championship



President's Cup - Group IV, 2. round

Match Team Statistics

## Guinea 22 - 23 Angola

25.6.2024. 10:00

Match No. 79

(11 - 8) (11 - 15)

Attendance: 30

Sport Centre Jane Sandanski

Hall 2

Referees: Heidy Elsaied (EGY) / Yasmina Elsaied (EGY)

### Guinea

#	Surname and name	S	Goals / shots								Attack					Def.			Penalties			TP												
			Tot.	%	9m	6m	Wing	7m	FB	Brk.	LD	As.	PC	E7	E2	TF	St.	C7	Blk	YC	2m		R	B										
1	SOUMAH Fatoumata																																	
2	BANGOURA Mariama	S	6/6	100	3/3	1/1		2/2							2	2	3	5	9	1														59:52
3	SOUMAH Diaraye		2/3	67		1/2					1/1																						31:37	
5	DIALLO Aissatou		1/1	100						1/1									1														22:12	
6	DIASSY Fatoumata Bint	S	1/1	100							1/1							1	1	1													26:08	
8	SANKHON Kadiatou	S	4/7	57	0/1	1/1	2/3		0/1	1/1				1		1	1	3	2														36:45	
10	KONATE Mama	S																1															29:27	
12	SOUMAH M'mah		0/1	0							0/1																						8:37	
15	SOUMAH Mayelie		7/8	88	3/3			3/4		1/1				3	2			7															43:14	
16	CONTE M'mahawa																																24:32	
17	COUMBASSA Adama																																	
18	KABA Aminata																																	
22	BANGOURA Mabinty	S																															35:28	
23	KEITA Fatoumata																	1															5:29	
26	CAMARA Mariétou	S	0/2	0			0/2										1																46:46	
30	BANGOURA Aicha	S	1/3	33	0/2	1/1										1	2		1														49:43	
	Team / bench																	3																
	UKUPNO		22/32	69	6/9	4/5	2/5	5/6	0/1	4/4	1/2			6	4	6	9	25	5	1	0	1	5	1	1									

Goalkeepers		Saves / shots								
#	Surname and name	Tot.	%	9m	6m	Wing	7m	FB	Brk.	LD
1	SOUMAH Fatoumata									
16	CONTE M'mahawa	5/14	36	1/3	0/1	2/2		0/4	2/4	
22	BANGOURA Mabinty	6/20	30	3/8	0/1	1/1	0/1	0/3	2/6	
	TOTAL	11/34	32	4/11	0/2	3/3	0/1	0/7	4/10	0/0

Coach: Lansana Dinalo Camara

Number of attacks: 56, Efficiency: 39%, Average Duration: 41.73 seconds

### Attack by type of defense

	Shots	9m	6m	Wing	TF	E7	E2
On def. 6-0	10/15	6/9	1/2	1/2	18	3	6
On def. 5-1	6/8	0/0	3/3	1/3	7	3	3
Fastbreak	0/1				0	0	0

### Defense by type

	Total	9m	6m	Wing	Stl.	C7	2m
Def. 6-0	13/27	6/12	1/1	0/4	4	1	0
Def. 5-1	2/3	1/1	1/1	0/0	1	0	0
Fastbreak	7/9				0	0	5

### Attack with superiority / minority / goalkeeper out

	Attack				Reaction		
	Att.	Eff.	Shots	TF	FB	LD	Tot.
6 on 6	29	41%	12/18	11			
6 on 5	16	44%	7/9	7			
5 on 6	7	14%	1/2	5			
5 on 5	3	67%	2/2	1			
4 on 6	1	0%	0/0	1			

Player superiority / GK out counted at the end of attack (in case it changes during attack)

### Defense with superiority / minority / goalkeeper out

	Attack				Reaction		
	Att.	Eff.	Shots	TF	FB	LD	Tot.
7 on 6 (GK out)	4	25%	1/3	1	0/0	1/1	1/1
6 on 6 (GK out)	12	33%	4/8	4	0/0	0/1	0/1
6 on 6	25	36%	9/16	9			
7 on 5 (GK out)	1	100%	1/1	0	0/0	0/0	0/0
6 on 5 (GK out)	1	100%	1/1	0	0/0	0/0	0/0
6 on 5	10	50%	5/8	2			
5 on 5	1	100%	1/1	0			
6 on 4	2	50%	1/1	1			

Numbers show attacking numbers of opponent. Lower efficiency of opponent means better defense of this team

# Jersey number Tot. Total shooting 6m 6m (line) shooting 9m 9m shooting Wng Wing shooting FB Fastbreak sh. 7m 7m penalty sh.  
 Brk. Breakthrough sh. LD Long distance sh. As. Assists PC Pass clear chance E7 Earned 7m pen. TF Technical faults St. Steals  
 2m 2m punishments C7. Committed 7m E2 Earned 2m pun. YC. Yellow cards R/B Red/Blue cards Blk. Blocks S Starting Line-up



# 24th IHF Women's Junior (U20) World Championship



President's Cup - Group IV, 2. round

Match Team Statistics

Match No. 79

## Guinea 22 - 23 Angola

(11 - 8) (11 - 15)

25.6.2024. 10:00

Attendance: 30

Sport Centre Jane Sandanski

Hall 2

Referees: Heidy Elsaied (EGY) / Yasmina Elsaied (EGY)

### Shot distribution by player

2 M. Bangoura

		2/2
2/2		1/1

1/1 lob

3 D. Soumah

		1/2
		1/1

5 A. Diallo

1/1		

6 F. Diassy

	1/1	

8 K. Sankhon

		0/1
4/4		

2 post

10 M. Konate


12 M. Soumah


1 block

15 M. Soumah

1/1		
1/2		
2/2		3/3

17 A. Coumbassa


18 A. Kaba


23 F. Keita


26 M. Camara

	0/1	

1 miss.

30 A. Bangoura

0/1	1/1	
	0/1	

TOTAL

1/1		
2/4	2/3	3/5
8/8	0/1	5/5

2 post 1 miss. 1 block 1/1 lob

### Saves distribution goalkeepers

1 F. Soumah


16 M. Conte

3/7	2/2	0/2
0/1		0/2

22 M. Bangoura

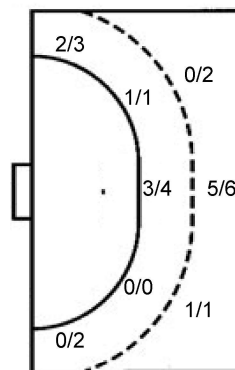
1/3	1/1	2/5
2/4		0/7

TOTAL

4/10	3/3	2/7
2/5		0/9

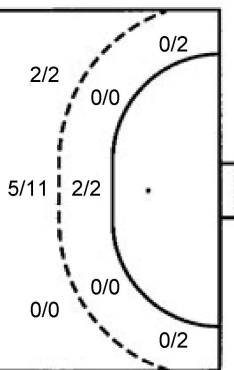
### Shots by position

ATTACK



7m penalties 5/6  
Fastbreak 0/1  
Breakthrough 4/4  
Long dist. 1/2

DEFENSE



7m penalties 1/1  
Fastbreak 7/9  
Breakthrough 6/11  
Long dist. 0/0

### Shooting statistics

Position	Goals	Sav.	Miss.	Post	Blk.	Total	%
Back (9m)	6	2	0	1	0	9	67
Line (6m)	4	1	0	0	0	5	80
Wing	2	1	1	1	0	5	40
7m penalties	5	1	0	0	0	6	83
Fastbreak	0	1	0	0	0	1	0
Breakthrough	4	0	0	0	0	4	100
<b>Total</b>	<b>21</b>	<b>6</b>	<b>1</b>	<b>2</b>	<b>0</b>	<b>30</b>	<b>70</b>

# Jersey number Tot. Total shooting 6m 6m (line) shooting 9m 9m shooting Wng Wing shooting FB Fastbreak sh. 7m 7m penalty sh.  
Brk. Breakthrough sh. LD Long distance sh. As. Assists PC Pass clear chance E7 Earned 7m pen. TF Technical faults St. Steals  
2m 2m punishments C7. Committed 7m E2 Earned 2m pun. YC. Yellow cards R/B Red/Blue cards Blk. Blocks S Starting Line-up

Handball statistics and livescore by Toma-soft ltd (www.toma-soft.hr)



# 24th IHF Women's Junior (U20) World Championship



President's Cup - Group IV, 2. round

## Match Team Statistics

Match No. 79

## Guinea 22 - 23 Angola

(11 - 8) (11 - 15)

25.6.2024. 10:00

Attendance: 30

Sport Centre Jane Sandanski

Hall 2

Referees: Heidy Elsaied (EGY) / Yasmina Elsaied (EGY)

## Angola

#	Surname and name	S	Goals / shots								Attack				Def.			Penalties				TP							
			Tot.	%	9m	6m	Wing	7m	FB	Brk.	LD	As.	PC	E7	E2	TF	St.	C7	Blk	YC	2m		R	B					
1	MULAMBA Carla Nkonko Jaime	S																											39:48
3	GERALDO Ivandra Josefa Manico	S																											6:32
4	TATI Marcela Gonçalves	S																									1		16:51
6	LUANGO Elisandra Vunge		3/6	50	0/1																								23:27
7	BELO Bernardeth Carla	S	7/12	58	4/7				1/1	1/1	1/3				2	1	3	3											58:33
8	MATOS Rosa Maria Muhongo		0/1	0						0/1																			21:43
9	PEDRO Elisandra Guilhermina Paulino	S	3/6	50	1/3	1/1				1/1	0/1				2	1			1								1		45:33
10	CAPESSA Marisoni Julieta Bernardo																												16:05
13	NUNDA Balbina Cassova Afonso		4/7	57				0/2			4/5				1				3	1									42:46
15	FERNANDO Sandy Da Conceicao C. Gomes	S	1/1	100		1/1													3	1	2					2			17:33
16	DALA Juliana Queta																												14:48
19	XAVIER Maude Kumbembe Bartolomeu		1/3	33				0/2			1/1								1	1									20:39
20	SIMÕES Isabel Batalha De Almeida	S																									1		7:02
31	PEDRO Lurdes Manuel		2/2	100	1/1										1	1			2							2			52:28
35	CARVALHO Anissia Maria Antonio De																												7:36
77	TUMBA Jorcela Mutoca Varanda		2/2	100	1/1										4				1	1	1	1				1			27:57
	Team / bench																												
	UKUPNO		23/40	58	7/13	2/2	0/4	1/1	7/9	6/11	0/0				9	6	1	6	17	5	6	0	0	0	8	1	0		

#	Surname and name	Saves / shots								
		Tot.	%	9m	6m	Wing	7m	FB	Brk.	LD
1	MULAMBA Carla Nkonko Jaime	5/19	26	2/5	1/4	1/3	0/4	1/1	0/2	
16	DALA Juliana Queta	1/7	14	0/3			1/2		0/2	
	TOTAL	6/26	23	2/8	1/4	1/3	1/6	1/1	0/4	0/0

Coach: Jose Terça Chuma

Number of attacks: 56, Efficiency: 41%, Average Duration: 22.18 seconds

## Attack by type of defense

	Shots	9m	6m	Wing	TF	E7	E2
On def. 6-0	13/27	6/12	1/1	0/4	14	1	5
On def. 5-1	2/3	1/1	1/1	0/0	3	0	1
Fastbreak	7/9				0	0	0

## Defense by type

	Total	9m	6m	Wing	Stl.	C7	2m
Def. 6-0	10/15	6/9	1/2	1/2	3	3	0
Def. 5-1	6/8	0/0	3/3	1/3	2	3	0
Fastbreak	0/1				0	0	8

## Attack with superiority / minority / goalkeeper out

	Attack				Reaction		
	Att.	Eff.	Shots	TF	FB	LD	Tot.
7 on 6 (GK out)	4	25%	1/3	1	0/0	1/1	1/1
6 on 6 (GK out)	12	33%	4/8	4	0/0	0/1	0/1
6 on 6	25	36%	9/16	9			
7 on 5 (GK out)	1	100%	1/1	0	0/0	0/0	0/0
6 on 5 (GK out)	1	100%	1/1	0	0/0	0/0	0/0
6 on 5	10	50%	5/8	2			
5 on 5	1	100%	1/1	0			
6 on 4	2	50%	1/1	1			

Player superiority / GK out counted at the end of attack (in case it changes during attack)

## Defense with superiority / minority / goalkeeper out

	Attack				Reaction		
	Att.	Eff.	Shots	TF	FB	LD	Tot.
6 on 6	29	41%	12/18	11			
6 on 5	16	44%	7/9	7			
5 on 6	7	14%	1/2	5			
5 on 5	3	67%	2/2	1			
4 on 6	1	0%	0/0	1			

Numbers show attacking numbers of opponent. Lower efficiency of opponent means better defense of this team

# Jersey number Tot. Total shooting 6m 6m (line) shooting 9m 9m shooting Wng Wing shooting FB Fastbreak sh. 7m 7m penalty sh.  
 Brk. Breakthrough sh. LD Long distance sh. As. Assists PC Pass clear chance E7 Earned 7m pen. TF Technical faults St. Steals  
 2m 2m punishments C7. Committed 7m E2 Earned 2m pun. YC. Yellow cards R/B Red/Blue cards Blk. Blocks S Starting Line-up



# 24th IHF Women's Junior (U20) World Championship



President's Cup - Group IV, 2. round

Match Team Statistics

Match No. 79

## Guinea 22 - 23 Angola

(11 - 8) (11 - 15)

25.6.2024. 10:00

Attendance: 30

Sport Centre Jane Sandanski

Hall 2

Referees: Heidy Elsaied (EGY) / Yasmina Elsaied (EGY)

### Shot distribution by player

3 I. Geraldo


4 M. Tati


6 E. Luango

2/4		
0/1		1/1

7 B. Belo

3/4	0/1	1/3
1/1		2/2

1 miss.

8 R. Matos


1 miss.

9 E. Pedro

	0/1	2/2
		1/1

1 post 1 miss.

10 M. Capessa


13 B. Nunda

2/3		2/2

2 post

15 S. Fernando

		1/1

19 M. Xavier

0/1	0/1	
		1/1

20 I. Simoes


31 L. Pedro

1/1		1/1

35 A. Carvalho


77 J. Tumba

		1/1
		1/1

### TOTAL

6/10	0/3	5/7
3/5		9/9

3 post 3 miss.

### Saves distribution goalkeepers

1 C. Mulamba

0/1		
1/2	1/1	2/3
0/8	1/1	0/3

16 J. Dala

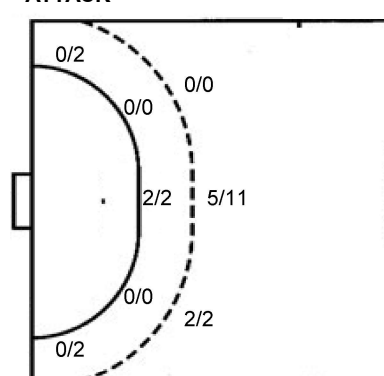
1/2		0/2
		0/2

TOTAL

0/1		
2/4	1/1	2/5
0/8	1/1	0/5

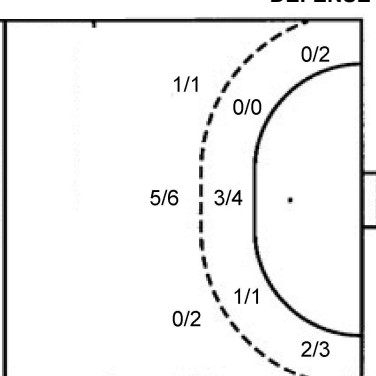
### Shots by position

ATTACK



7m penalties 1/1  
Fastbreak 7/9  
Breakthrough 6/11  
Long dist. 0/0

DEFENSE



7m penalties 5/6  
Fastbreak 0/1  
Breakthrough 4/4  
Long dist. 1/2

### Shooting statistics

Position	Goals	Sav.	Miss.	Post	Blk.	Total	%
Back (9m)	7	4	1	1	0	13	54
Line (6m)	2	0	0	0	0	2	100
Wing	0	3	0	1	0	4	0
7m penalties	1	0	0	0	0	1	100
Fastbreak	7	0	1	1	0	9	78
Breakthrough	6	4	1	0	0	11	55
<b>Total</b>	<b>23</b>	<b>11</b>	<b>3</b>	<b>3</b>	<b>0</b>	<b>40</b>	<b>58</b>

# Jersey number Tot. Total shooting 6m 6m (line) shooting 9m 9m shooting Wng Wing shooting FB Fastbreak sh. 7m 7m penalty sh.  
Brk. Breakthrough sh. LD Long distance sh. As. Assists PC Pass clear chance E7 Earned 7m pen. TF Technical faults St. Steals  
2m 2m punishments C7. Committed 7m E2 Earned 2m pun. YC. Yellow cards R/B Red/Blue cards Blk. Blocks S Starting Line-up

Handball statistics and livescore by Toma-soft ltd (www.toma-soft.hr)

