



# 24th IHF Women's Junior (U20) World Championship



President's Cup - Group II, 2. round

Match Team Statistics

## Argentina 33 - 35 Japan

25.6.2024. 09:00

Match No. 75

(15 - 18) (18 - 17)

Attendance: 55

Sport Centre Jane Sandanski

Referees: Ramesh Thiyagarajah (GER) / Suresh Thiyagarajah (GER)

### Argentina

| #  | Surname and name            | S | Goals / shots |     |       |     |      |     |     |      | Attack |     |    |    |    | Def. |     |    | Penalties |    |    |   | TP |   |   |   |       |
|----|-----------------------------|---|---------------|-----|-------|-----|------|-----|-----|------|--------|-----|----|----|----|------|-----|----|-----------|----|----|---|----|---|---|---|-------|
|    |                             |   | Tot.          | %   | 9m    | 6m  | Wing | 7m  | FB  | Brk. | LD     | As. | PC | E7 | E2 | TF   | St. | C7 | Blk       | YC | 2m | R |    | B |   |   |       |
| 2  | CABANA HOELER Ailin Eugenia |   | 0/2           | 0   |       |     | 0/1  |     |     |      |        | 0/1 |    |    |    |      |     | 1  |           |    | 1  |   |    |   |   |   | 16:39 |
| 3  | LAYUS Martina Pilar         | S | 1/1           | 100 |       |     |      |     |     |      | 1/1    |     |    |    | 2  | 2    |     |    |           |    |    | 2 |    |   |   |   | 15:24 |
| 4  | GULL QUERIN Sofia           |   | 5/14          | 36  | 3/11  | 1/1 |      | 0/1 |     |      | 1/1    |     |    |    | 3  | 2    |     |    |           |    |    | 2 | 2  |   |   |   | 50:54 |
| 5  | TAJES Martina               |   |               |     |       |     |      |     |     |      |        |     |    |    |    |      |     |    |           |    |    |   |    |   |   |   | 3:00  |
| 7  | SATTO Paloma                | S | 4/7           | 57  |       | 1/1 | 3/5  |     |     |      | 0/1    |     |    |    |    |      |     |    |           |    |    |   |    |   | 1 |   | 41:12 |
| 8  | KRUK Miranda                | S | 2/4           | 50  | 1/2   | 0/1 |      |     |     |      | 1/1    |     |    |    | 1  |      | 1   |    |           |    |    |   | 2  |   |   |   | 23:55 |
| 9  | MANZO Kiara Belen           | S |               |     |       |     |      |     |     |      |        |     |    |    |    |      |     |    |           |    |    | 2 | 1  |   |   | 1 | 30:02 |
| 10 | SPINELLI Azul               | S | 6/12          | 50  | 3/8   |     |      | 1/1 |     |      | 2/3    |     |    |    | 1  |      | 1   | 4  | 1         |    |    |   |    |   |   |   | 52:07 |
| 12 | CARRASCO Florencia          |   |               |     |       |     |      |     |     |      |        |     |    |    |    |      |     |    |           |    |    |   |    |   |   |   | 37:09 |
| 16 | CUADRADO Candelaria         | S |               |     |       |     |      |     |     |      |        |     |    |    |    |      |     |    |           |    |    |   |    |   |   |   | 17:09 |
| 17 | ORIOLO Zoe Morena           |   | 2/2           | 100 |       | 2/2 |      |     |     |      |        |     |    |    |    | 1    |     | 1  |           |    |    |   |    | 2 |   |   | 41:42 |
| 19 | REMOLQUE Candela Agustina   |   |               |     |       |     |      |     |     |      |        |     |    |    |    |      |     |    |           |    |    |   |    |   |   |   |       |
| 20 | ALFREDI Magali Agustina     |   | 11/12         | 92  | 9/10  |     |      |     |     |      | 2/2    |     |    | 1  | 1  |      |     | 3  |           |    |    | 1 |    |   |   |   | 32:05 |
| 22 | CACERES lara Jazmin         | S | 2/2           | 100 |       |     | 1/1  |     |     |      | 1/1    |     |    |    |    |      |     |    |           |    |    |   |    |   |   |   | 54:15 |
| 23 | STANICH Valentina           |   |               |     |       |     |      |     |     |      |        |     |    |    |    |      |     |    |           |    |    |   |    |   |   |   |       |
| 30 | MARTINELLI Rocio Luciana    |   | 0/1           | 0   |       | 0/1 |      |     |     |      |        |     |    |    |    |      |     |    |           |    |    |   |    |   |   |   | 4:27  |
|    | Team / bench                |   |               |     |       |     |      |     |     |      |        |     |    |    |    |      |     |    |           |    |    |   |    |   |   |   |       |
|    | UKUPNO                      |   | 33/57         | 58  | 16/31 | 4/5 | 4/8  | 1/2 | 0/0 | 8/11 | 0/0    |     |    | 7  | 6  | 2    | 1   | 16 | 4         | 2  | 3  | 0 | 2  | 0 | 0 |   |       |

| #  | Surname and name    | Saves / shots |    |      |     |      |     |     |      |     |
|----|---------------------|---------------|----|------|-----|------|-----|-----|------|-----|
|    |                     | Tot.          | %  | 9m   | 6m  | Wing | 7m  | FB  | Brk. | LD  |
| 12 | CARRASCO Florencia  | 11/34         | 32 | 6/9  | 0/2 | 1/5  | 0/1 | 1/7 | 3/10 |     |
| 16 | CUADRADO Candelaria | 5/15          | 33 | 1/4  | 1/3 | 3/4  | 0/1 | 0/2 | 0/1  |     |
|    | TOTAL               | 16/49         | 33 | 7/13 | 1/5 | 4/9  | 0/2 | 1/9 | 3/11 | 0/0 |

Coach: **Hernan Carlos Siso**

Number of attacks: 72, Efficiency: 46%, Average Duration: 26.88 seconds

### Attack by type of defense

|               | Shots | 9m    | 6m  | Wing | TF | E7 | E2 |
|---------------|-------|-------|-----|------|----|----|----|
| On def. 6-0   | 29/51 | 14/28 | 4/5 | 3/7  | 16 | 2  | 1  |
| On def. 3-2-1 | 1/2   | 1/2   | 0/0 | 0/0  | 0  | 0  | 0  |
| Fastbreak     | 0/0   |       |     |      | 0  | 0  | 0  |

### Defense by type

|           | Total | 9m   | 6m  | Wing | Stl. | C7 | 2m |
|-----------|-------|------|-----|------|------|----|----|
| Def. 6-0  | 21/41 | 6/19 | 4/5 | 3/7  | 4    | 2  | 0  |
| Fastbreak | 8/10  |      |     |      | 0    | 0  | 2  |

### Attack with superiority / minority / goalkeeper out

|                 | Attack |      |       |    | Reaction |     |      |
|-----------------|--------|------|-------|----|----------|-----|------|
|                 | Att.   | Eff. | Shots | TF | FB       | LD  | Tot. |
| 7 on 6 (GK out) | 3      | 100% | 3/3   | 0  | 0/0      | 0/0 | 0/0  |
| 6 on 6 (GK out) | 1      | 0%   | 0/1   | 0  | 0/0      | 0/0 | 0/0  |
| 6 on 6          | 63     | 43%  | 27/47 | 16 |          |     |      |
| 6 on 5          | 2      | 50%  | 1/2   | 0  |          |     |      |
| 5 on 6          | 3      | 67%  | 2/3   | 0  |          |     |      |

Player superiority / GK out counted at the end of attack (in case it changes during attack)

### Defense with superiority / minority / goalkeeper out

|                 | Attack |      |       |    | Reaction |     |      |
|-----------------|--------|------|-------|----|----------|-----|------|
|                 | Att.   | Eff. | Shots | TF | FB       | LD  | Tot. |
| 7 on 6 (GK out) | 1      | 0%   | 0/1   | 0  | 0/0      | 0/0 | 0/0  |
| 6 on 6          | 67     | 45%  | 30/53 | 14 |          |     |      |
| 5 on 6          | 2      | 100% | 2/2   | 0  |          |     |      |
| 6 on 5          | 4      | 75%  | 3/4   | 0  |          |     |      |

Numbers show attacking numbers of opponent. Lower efficiency of opponent means better defense of this team

# Jersey number Tot. Total shooting 6m 6m (line) shooting 9m 9m shooting Wng Wing shooting FB Fastbreak sh. 7m 7m penalty sh.  
 Brk. Breakthrough sh. LD Long distance sh. As. Assists PC Pass clear chance E7 Earned 7m pen. TF Technical faults St. Steals  
 2m 2m punishments C7. Committed 7m E2 Earned 2m pun. YC. Yellow cards R/B Red/Blue cards Blk. Blocks S Starting Line-up



# 24th IHF Women's Junior (U20) World Championship



President's Cup - Group II, 2. round

## Match Team Statistics

Match No. 75

## Argentina 33 - 35 Japan

(15 - 18) (18 - 17)

25.6.2024. 09:00

Attendance: 55

Sport Centre Jane Sandanski

Referees: Ramesh Thiyagarajah (GER) / Suresh Thiyagarajah (GER)

### Shot distribution by player

2 A. Cabana Hoeler

|  |  |  |
|--|--|--|
|  |  |  |
|  |  |  |
|  |  |  |

1 miss. 0/1 lob

3 M. Layus

|  |  |  |
|--|--|--|
|  |  |  |
|  |  |  |
|  |  |  |

1/1 lob

4 S. Gull Querin

|     |  |     |
|-----|--|-----|
|     |  | 2/4 |
|     |  |     |
| 3/3 |  |     |

2 post 3 miss. 2 block

5 M. Tajes

|  |  |  |
|--|--|--|
|  |  |  |
|  |  |  |
|  |  |  |

7 P. Satto

|  |  |     |
|--|--|-----|
|  |  |     |
|  |  | 0/1 |
|  |  | 2/2 |

1 post 1 miss. 2/2 lob

8 M. Kruk

|     |  |     |
|-----|--|-----|
|     |  |     |
| 1/1 |  |     |
|     |  | 1/2 |

1 post

9 K. Manzo

|  |  |  |
|--|--|--|
|  |  |  |
|  |  |  |
|  |  |  |

10 A. Spinelli

|     |     |     |
|-----|-----|-----|
| 1/2 |     | 1/2 |
|     |     |     |
|     | 1/1 | 2/2 |

3 post 1 miss. 1/1 lob

17 Z. Oriolo

|  |  |     |
|--|--|-----|
|  |  |     |
|  |  |     |
|  |  | 2/2 |

19 C. Remolque

|  |  |  |
|--|--|--|
|  |  |  |
|  |  |  |
|  |  |  |

20 M. Alfredi

|     |     |     |
|-----|-----|-----|
|     |     | 1/1 |
| 1/1 |     | 1/1 |
| 3/3 | 1/1 | 4/5 |

22 I. Caceres

|     |  |     |
|-----|--|-----|
|     |  |     |
|     |  |     |
| 1/1 |  | 1/1 |

23 V. Stanich

|  |  |  |
|--|--|--|
|  |  |  |
|  |  |  |
|  |  |  |

30 R. Martinelli

|  |  |     |
|--|--|-----|
|  |  |     |
|  |  |     |
|  |  | 0/1 |

### TOTAL

|     |     |       |
|-----|-----|-------|
| 1/2 |     | 4/7   |
| 2/2 |     | 1/2   |
| 7/7 | 2/2 | 12/15 |

7 post 6 miss. 2 block 4/5 lob

### Saves distribution goalkeepers

12 F. Carrasco

|     |     |     |
|-----|-----|-----|
| 1/2 | 0/1 | 0/4 |
| 1/4 | 1/1 | 1/5 |
| 5/8 | 1/2 | 1/5 |

16 C. Cuadrado

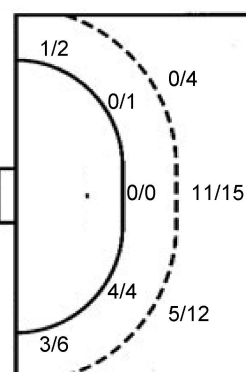
|     |     |     |
|-----|-----|-----|
| 1/4 |     |     |
| 1/3 |     |     |
| 0/3 | 2/2 | 1/3 |

### TOTAL

|      |     |     |
|------|-----|-----|
| 2/6  | 0/1 | 0/4 |
| 2/7  | 1/1 | 1/5 |
| 5/11 | 3/4 | 2/8 |

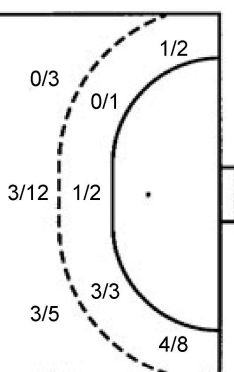
### Shots by position

#### ATTACK



7m penalties 1/2  
Fastbreak 0/0  
Breakthrough 8/11  
Long dist. 0/0

#### DEFENSE



7m penalties 2/2  
Fastbreak 8/10  
Breakthrough 8/12  
Long dist. 2/2

### Shooting statistics

| Position     | Goals     | Sav.     | Miss.    | Post     | Blk.     | Total     | %         |
|--------------|-----------|----------|----------|----------|----------|-----------|-----------|
| Back (9m)    | 16        | 5        | 3        | 5        | 2        | 31        | 52        |
| Line (6m)    | 4         | 0        | 0        | 1        | 0        | 5         | 80        |
| Wing         | 4         | 3        | 1        | 0        | 0        | 8         | 50        |
| 7m penalties | 1         | 1        | 0        | 0        | 0        | 2         | 50        |
| Fastbreak    | 0         | 0        | 0        | 0        | 0        | 0         | 0         |
| Breakthrough | 8         | 0        | 2        | 1        | 0        | 11        | 73        |
| <b>Total</b> | <b>33</b> | <b>9</b> | <b>6</b> | <b>7</b> | <b>2</b> | <b>57</b> | <b>58</b> |

# Jersey number Tot. Total shooting 6m 6m (line) shooting 9m 9m shooting Wng Wing shooting FB Fastbreak sh. 7m 7m penalty sh.  
Brk. Breakthrough sh. LD Long distance sh. As. Assists PC Pass clear chance E7 Earned 7m pen. TF Technical faults St. Steals  
2m 2m punishments C7. Committed 7m E2 Earned 2m pun. YC. Yellow cards R/B Red/Blue cards Blk. Blocks S Starting Line-up



# 24th IHF Women's Junior (U20) World Championship



President's Cup - Group II, 2. round

Match Team Statistics

## Argentina 33 - 35 Japan

25.6.2024. 09:00

Match No. 75

(15 - 18) (18 - 17)

Attendance: 55

Sport Centre Jane Sandanski

Referees: Ramesh Thiyagarajah (GER) / Suresh Thiyagarajah (GER)

### Japan

| #  | Surname and name | S | Goals / shots |     |      |     |      |     |      |      | Attack |     |    |    | Def. |    |     | Penalties |     |    |    | TP |   |   |  |  |  |       |  |
|----|------------------|---|---------------|-----|------|-----|------|-----|------|------|--------|-----|----|----|------|----|-----|-----------|-----|----|----|----|---|---|--|--|--|-------|--|
|    |                  |   | Tot.          | %   | 9m   | 6m  | Wing | 7m  | FB   | Brk. | LD     | As. | PC | E7 | E2   | TF | St. | C7        | Blk | YC | 2m |    | R | B |  |  |  |       |  |
| 1  | KITABAYASHI Riri | S |               |     |      |     |      |     |      |      |        | 1   |    |    |      |    |     |           |     |    |    |    |   |   |  |  |  | 36:12 |  |
| 3  | HOKAGUCHI Wakana |   | 2/4           | 50  | 1/2  |     |      | 1/1 |      |      |        | 1   |    |    |      |    | 2   |           |     |    |    |    |   |   |  |  |  | 4:21  |  |
| 5  | KOYAMA Ayumu     | S | 2/3           | 67  | 2/2  |     |      | 0/1 |      |      |        | 3   | 2  |    |      | 2  | 2   |           |     |    |    |    |   |   |  |  |  | 25:24 |  |
| 6  | MIZUTANI Miu     |   |               |     |      |     |      |     |      |      |        | 2   |    |    | 1    |    |     |           |     |    |    |    |   |   |  |  |  | 3:12  |  |
| 8  | ROKUGAWA Ayumi   | S | 1/4           | 25  | 1/4  |     |      |     |      |      |        | 2   |    |    |      | 2  | 1   |           |     |    |    |    |   |   |  |  |  | 25:22 |  |
| 9  | SEKINO Ayano     |   |               |     |      |     |      |     |      |      |        |     |    |    |      |    |     |           |     |    |    |    |   |   |  |  |  | 0:01  |  |
| 10 | KONYA Risa       | S | 4/9           | 44  | 0/4  | 1/1 |      |     | 2/2  |      |        | 4   | 2  | 1  | 2    |    |     |           |     |    |    |    |   | 2 |  |  |  | 55:42 |  |
| 11 | AZUMA Konoka     |   | 4/7           | 57  |      | 1/1 | 3/6  |     |      |      |        |     |    |    |      |    |     |           |     |    |    |    |   |   |  |  |  | 33:23 |  |
| 14 | OKUMURA Yusa     |   | 5/9           | 56  | 0/1  | 0/1 |      |     |      | 1/1  | 3/5    | 1/1 |    | 2  | 1    |    | 3   | 1         |     |    |    |    |   |   |  |  |  | 34:29 |  |
| 15 | YAMAGUCHI Toko   | S | 5/8           | 63  | 1/3  | 1/1 |      |     |      | 1/2  | 2/2    |     | 1  |    |      | 3  | 1   |           |     |    |    |    |   |   |  |  |  | 25:20 |  |
| 16 | SUGIMOTO Mizuki  |   |               |     |      |     |      |     |      |      |        | 1   |    |    | 1    |    |     |           |     |    |    |    |   |   |  |  |  | 22:56 |  |
| 18 | SASAKI Ayaka     | S | 6/6           | 100 |      |     | 1/1  |     | 3/3  | 1/1  | 1/1    |     |    |    |      | 1  |     |           |     |    |    |    |   | 1 |  |  |  | 44:55 |  |
| 19 | TERADA Waka      |   | 1/3           | 33  |      |     | 0/1  |     | 1/2  |      |        |     |    |    |      | 1  |     |           |     |    |    |    |   |   |  |  |  | 17:06 |  |
| 22 | KAWASAKI Miu     |   | 3/6           | 50  | 1/3  | 0/1 |      |     |      | 1/1  | 1/1    |     | 1  | 1  |      |    | 1   |           |     |    |    |    |   |   |  |  |  | 34:44 |  |
| 23 | NAKAO Ai         | S | 2/2           | 100 |      | 1/1 |      |     |      | 1/1  |        |     | 2  |    |      |    |     | 1         |     |    |    |    |   |   |  |  |  | 25:16 |  |
| 25 | KATO Mao         |   | 0/1           | 0   | 0/1  |     |      |     |      |      |        |     | 1  |    |      |    |     | 1         |     |    |    |    |   |   |  |  |  | 31:30 |  |
|    | Team / bench     |   |               |     |      |     |      |     |      |      |        |     |    |    |      |    |     |           |     |    |    |    |   |   |  |  |  |       |  |
|    | UKUPNO           |   | 35/62         | 56  | 6/20 | 4/6 | 5/10 | 2/2 | 8/10 | 8/12 | 2/2    | 16  | 10 | 2  | 2    | 14 | 8   | 2         | 2   | 0  | 1  | 0  | 0 |   |  |  |  |       |  |

| #  | Surname and name | Saves / shots |    |      |     |      |     |     |      |     |
|----|------------------|---------------|----|------|-----|------|-----|-----|------|-----|
|    |                  | Tot.          | %  | 9m   | 6m  | Wing | 7m  | FB  | Brk. | LD  |
| 1  | KITABAYASHI Riri | 8/28          | 29 | 5/13 | 0/2 | 2/6  | 1/2 |     | 0/5  |     |
| 16 | SUGIMOTO Mizuki  | 1/14          | 7  | 0/8  | 0/2 | 1/1  |     |     | 0/3  |     |
|    | TOTAL            | 9/42          | 21 | 5/21 | 0/4 | 3/7  | 1/2 | 1/0 | 0/8  | 0/0 |

Coach: Satoshi Kawai

Number of attacks: 74, Efficiency: 47%, Average Duration: 22.34 seconds

### Attack by type of defense

|             | Shots | 9m   | 6m  | Wing | TF | E7 | E2 |
|-------------|-------|------|-----|------|----|----|----|
| On def. 6-0 | 21/41 | 6/19 | 4/5 | 3/7  | 14 | 2  | 2  |
| Fastbreak   | 8/10  |      |     |      | 0  | 0  | 0  |

### Defense by type

|            | Total | 9m    | 6m  | Wing | Stl. | C7 | 2m |
|------------|-------|-------|-----|------|------|----|----|
| Def. 6-0   | 29/51 | 14/28 | 4/5 | 3/7  | 8    | 2  | 0  |
| Def. 3-2-1 | 1/2   | 1/2   | 0/0 | 0/0  | 0    | 0  | 0  |
| Fastbreak  | 0/0   |       |     |      | 0    | 0  | 1  |

### Attack with superiority / minority / goalkeeper out

|                 | Attack |      |       |    | Reaction |     |      |
|-----------------|--------|------|-------|----|----------|-----|------|
|                 | Att.   | Eff. | Shots | TF | FB       | LD  | Tot. |
| 7 on 6 (GK out) | 1      | 0%   | 0/1   | 0  | 0/0      | 0/0 | 0/0  |
| 6 on 6          | 67     | 45%  | 30/53 | 14 |          |     |      |
| 5 on 6          | 2      | 100% | 2/2   | 0  |          |     |      |
| 6 on 5          | 4      | 75%  | 3/4   | 0  |          |     |      |

Player superiority / GK out counted at the end of attack (in case it changes during attack)

### Defense with superiority / minority / goalkeeper out

|                 | Attack |      |       |    | Reaction |     |      |
|-----------------|--------|------|-------|----|----------|-----|------|
|                 | Att.   | Eff. | Shots | TF | FB       | LD  | Tot. |
| 7 on 6 (GK out) | 3      | 100% | 3/3   | 0  | 0/0      | 0/0 | 0/0  |
| 6 on 6 (GK out) | 1      | 0%   | 0/1   | 0  | 0/0      | 0/0 | 0/0  |
| 6 on 6          | 63     | 43%  | 27/47 | 16 |          |     |      |
| 6 on 5          | 2      | 50%  | 1/2   | 0  |          |     |      |
| 5 on 6          | 3      | 67%  | 2/3   | 0  |          |     |      |

Numbers show attacking numbers of opponent. Lower efficiency of opponent means better defense of this team

# Jersey number Tot. Total shooting 6m 6m (line) shooting 9m 9m shooting Wng Wing shooting FB Fastbreak sh. 7m 7m penalty sh.  
 Brk. Breakthrough sh. LD Long distance sh. As. Assists PC Pass clear chance E7 Earned 7m pen. TF Technical faults St. Steals  
 2m 2m punishments C7. Committed 7m E2 Earned 2m pun. YC. Yellow cards R/B Red/Blue cards Blk. Blocks S Starting Line-up



# 24th IHF Women's Junior (U20) World Championship



President's Cup - Group II, 2. round

## Match Team Statistics

Match No. 75

## Argentina 33 - 35 Japan

(15 - 18) (18 - 17)

25.6.2024. 09:00

Attendance: 55

Sport Centre Jane Sandanski

Referees: Ramesh Thiyagarajah (GER) / Suresh Thiyagarajah (GER)

### Shot distribution by player

#### 3 W. Hokaguchi

|     |  |     |
|-----|--|-----|
| 1/1 |  |     |
|     |  | 1/1 |
|     |  | 0/1 |

1 post

#### 5 A. Koyama

|     |  |     |
|-----|--|-----|
|     |  |     |
| 0/1 |  |     |
| 1/1 |  | 1/1 |

#### 6 M. Mizutani

|  |  |  |
|--|--|--|
|  |  |  |
|  |  |  |
|  |  |  |

#### 8 A. Rokugawa

|     |     |     |
|-----|-----|-----|
|     |     |     |
| 1/2 | 0/1 | 0/1 |
|     |     |     |

#### 9 A. Sekino

|  |  |  |
|--|--|--|
|  |  |  |
|  |  |  |
|  |  |  |

#### 10 R. Konya

|     |  |  |
|-----|--|--|
| 2/3 |  |  |
| 2/2 |  |  |
| 0/1 |  |  |

1 post 1 miss. 1 block

#### 11 K. Azuma

|     |     |     |
|-----|-----|-----|
| 0/1 | 1/1 |     |
| 1/1 |     | 1/1 |
|     | 0/1 |     |

1 miss. 1/1 lob

#### 14 Y. Okumura

|     |     |     |
|-----|-----|-----|
|     |     | 1/1 |
|     |     |     |
| 0/1 | 2/4 | 2/2 |

1 post

#### 15 T. Yamaguchi

|     |  |     |
|-----|--|-----|
|     |  |     |
|     |  |     |
| 3/4 |  | 2/2 |

1 miss. 1 block

#### 18 A. Sasaki

|     |     |     |
|-----|-----|-----|
| 1/1 |     | 1/1 |
|     |     | 1/1 |
| 1/1 | 1/1 | 1/1 |

#### 19 W. Terada

|     |  |  |
|-----|--|--|
|     |  |  |
|     |  |  |
| 1/3 |  |  |

#### 22 M. Kawasaki

|  |  |     |
|--|--|-----|
|  |  | 2/2 |
|  |  | 1/1 |
|  |  |     |

1 post 1 miss. 1 block

#### 23 A. Nakao

|     |  |  |
|-----|--|--|
|     |  |  |
| 1/1 |  |  |
|     |  |  |

1/1 lob

#### 25 M. Kato

|  |  |     |
|--|--|-----|
|  |  |     |
|  |  |     |
|  |  | 0/1 |

### TOTAL

|      |     |     |
|------|-----|-----|
| 4/6  | 1/1 | 4/4 |
| 5/7  | 0/1 | 4/5 |
| 6/11 | 3/6 | 6/8 |

4 post 4 miss. 3 block 2/2 lob

### Saves distribution goalkeepers

#### 1 R. Kitabayashi

|     |     |      |
|-----|-----|------|
| 1/2 |     | 3/7  |
|     |     | 1/1  |
| 0/1 | 0/1 | 3/12 |

#### 16 M. Sugimoto

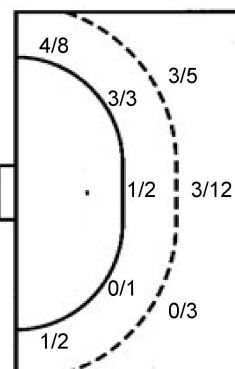
|     |     |     |
|-----|-----|-----|
|     |     |     |
| 0/2 |     | 0/1 |
| 0/6 | 0/1 | 0/3 |

### TOTAL

|     |     |      |
|-----|-----|------|
| 1/2 |     | 3/7  |
| 0/2 |     | 1/2  |
| 0/7 | 0/2 | 3/15 |

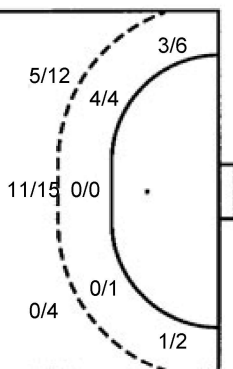
### Shots by position

#### ATTACK



|              |      |
|--------------|------|
| 7m penalties | 2/2  |
| Fastbreak    | 8/10 |
| Breakthrough | 8/12 |
| Long dist.   | 2/2  |

#### DEFENSE



|              |      |
|--------------|------|
| 7m penalties | 1/2  |
| Fastbreak    | 0/0  |
| Breakthrough | 8/11 |
| Long dist.   | 0/0  |

### Shooting statistics

| Position     | Goals     | Sav.      | Miss.    | Post     | Blk.     | Total     | %         |
|--------------|-----------|-----------|----------|----------|----------|-----------|-----------|
| Back (9m)    | 6         | 7         | 2        | 2        | 3        | 20        | 30        |
| Line (6m)    | 4         | 1         | 0        | 1        | 0        | 6         | 67        |
| Wing         | 5         | 4         | 1        | 0        | 0        | 10        | 50        |
| 7m penalties | 2         | 0         | 0        | 0        | 0        | 2         | 100       |
| Fastbreak    | 8         | 1         | 1        | 0        | 0        | 10        | 80        |
| Breakthrough | 8         | 3         | 0        | 1        | 0        | 12        | 67        |
| <b>Total</b> | <b>33</b> | <b>16</b> | <b>4</b> | <b>4</b> | <b>3</b> | <b>60</b> | <b>55</b> |

# Jersey number Tot. Total shooting 6m 6m (line) shooting 9m 9m shooting Wng Wing shooting FB Fastbreak sh. 7m 7m penalty sh.  
 Brk. Breakthrough sh. LD Long distance sh. As. Assists PC Pass clear chance E7 Earned 7m pen. TF Technical faults St. Steals  
 2m 2m punishments C7. Committed 7m E2 Earned 2m pun. YC. Yellow cards R/B Red/Blue cards Blk. Blocks S Starting Line-up

Handball statistics and livescore by Toma-soft ltd (www.toma-soft.hr)



# 24th IHF Women's Junior (U20) World Championship



President's Cup - Group II, 2. round

## Match Team Statistics

Match No. 75

### Argentina 33 - 35 Japan

(15 - 18) (18 - 17)

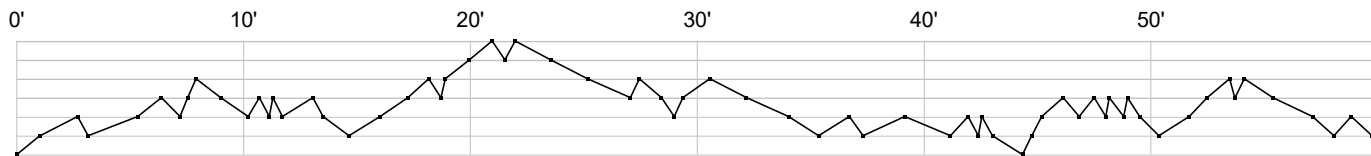
25.6.2024. 09:00

Attendance: 55

Sport Centre Jane Sandanski

Referees: Ramesh Thiyagarajah (GER) / Suresh Thiyagarajah (GER)

Japan +6  
Japan +5  
Japan +4  
Japan +3  
Japan +2  
Japan +1  
draw



## Argentina

|                 |                                                                     |
|-----------------|---------------------------------------------------------------------|
| 2 Cabana        | f                                                                   |
| 3 Laysu M       | a g p tt ap                                                         |
| 4 Gull Querin S | f g f f f b t g f ft f f g g b a p a p g fa                         |
| 5 Tajes M       |                                                                     |
| 7 Satto P       | x g g f                                                             |
| 8 Kruk M        | f e g t f g a t                                                     |
| 9 Manzo K       | t 2 tb                                                              |
| 10 Spinelli A   | t f ft g gg t t g f g fg p f f b i                                  |
| 12 Carrasco F   | r s r s r r r r r r s s s r s r s s s r r r r r r r r r r r r r r r |
| 16 Cuadrado C   | r s r s r r r r r s s r s                                           |
| 17 Oriolo Z     | t e x g g x                                                         |
| 19 Remolque C   |                                                                     |
| 20 Alfredi M    | g g g g t a g g p g gg t t f g c                                    |
| 22 Caceres I    | g g                                                                 |
| 23 Stanich V    |                                                                     |
| 30 Martinelli R | f                                                                   |

## Japan

|                 |                                                            |
|-----------------|------------------------------------------------------------|
| 1 Kitabayashi R | s r s r s a r r r r r r r r r s r r r r r r s r r ssr r sr |
| 3 Hokaguchi W   | f f g a b b g                                              |
| 5 Koyama A      | f p t b p ba ga g a t                                      |
| 6 Mizutani M    | p t p                                                      |
| 8 Rokugawa A    | g t a t baf ff                                             |
| 9 Sekino A      |                                                            |
| 10 Konya R      | x f ff p i a fx a egi a g g 2 f p g                        |
| 11 Azuma K      | g g g g f f f                                              |
| 14 Okumura Y    | p g f t g g f t g bg p t f f e                             |
| 15 Yamaguchi T  | f g t p g g f g t ft g b                                   |
| 16 Sugimoto M   | r r r ar t r r r r s r r r r r                             |
| 18 Sasaki A     | g g g g t g g                                              |
| 19 Terada W     | f f g t                                                    |
| 22 Kawasaki M   | f f bg ga f g p                                            |
| 23 Nakao A      | c a a g g                                                  |
| 25 Kato M       | c a f                                                      |

|                          |                      |                          |                                |                           |                        |
|--------------------------|----------------------|--------------------------|--------------------------------|---------------------------|------------------------|
| In game                  | <b>g</b> Goal scored | <b>f</b> Missed shot     | <b>a</b> Assist                | <b>t</b> Technical faults | <b>b</b> Steal         |
| <b>2</b> 2min suspension | <b>e</b> Earned 7m   | <b>c</b> Committed 7m    | <b>y</b> Yellow card           | <b>r</b> Red Card         | <b>k</b> Blue card     |
| <b>i</b> Earned 2min.    | <b>x</b> Block       | <b>4</b> 4min suspension | <b>p</b> Pass for clear chance | <b>s</b> Saved shot       | <b>r</b> Received goal |