



24th IHF Women's Junior (U20) World Championship



Main Round - Group IV, 2. round

Match Team Statistics

Portugal 26 - 25 Iceland

25.6.2024. 18:00

Match No. 71

(12 - 11) (14 - 14)

Attendance: 91

Sport Centre Boris Trajkovski

Referees: Vladimir Jovandic (SRB) / Marko Sekulic (SRB)

Portugal

Players		Goals / shots									Attack					Def.			Penalties			TP			
#	Surname and name	S	Tot.	%	9m	6m	Wing	7m	FB	Brk.	LD	As.	PC	E7	E2	TF	St.	C7	Bik	YC	2m	R	B		
1	GUIMARAES Rita																								0:16
2	PICO Maria																								
3	JESUS Luana	S	2/4	50		1/1	0/1	0/1		1/1						2									58:35
4	MENDES Barbara	S																							0:10
5	FERREIRA Sofia	S	8/11	73		8/11								1		2									32:21
7	RIBEIRO Lola	S	0/1	0			0/1											1							30:00
8	SEQUEIRA Constança	S	8/14	57	4/8			2/3		2/3		4	3			2	4								54:23
10	TABUADA Vitoria																								
12	ROSA Matilde	S																							59:21
13	FIGUEIRA Júlia		3/3	100			1/1		1/1	1/1															30:00
16	SILVA Mariana																								0:14
17	SEMEDO Joana																	1							29:39
19	CORREIA Matilde																								0:02
25	REBELO Luciana	S	0/7	0	0/6					0/1		6	3	3		4		1							56:28
27	SILVA Clémentine		1/2	50	0/1					1/1		1				1							1		17:00
81	FIGUEIREDO Carmen		4/9	44	2/6					2/3						1			1						50:47
Team / bench																									
UKUPNO			26/51	51	6/21	9/12	1/3	2/4	1/1	7/10	0/0	11	6	4	0	12	4	3	1	0	1	0	0		

Goalkeepers		Saves / shots								
#	Surname and name	Tot.	%	9m	6m	Wing	7m	FB	Brk.	LD
1	GUIMARAES Rita	0/1	0				0/1			
12	ROSA Matilde	14/37	38	5/12	3/4	2/5	0/1	0/2	3/12	1/1
16	SILVA Mariana	0/1	0				0/1			
TOTAL		14/39	36	5/12	3/4	2/5	0/3	0/2	3/12	1/1

Coach: José António Silva

Number of attacks: 58, Efficiency: 45%, Average Duration: 26.86 seconds

Attack by type of defense

	Shots	9m	6m	Wing	TF	E7	E2
On def. 6-0	17/35	3/13	8/11	1/3	7	1	0
On def. 5-1	6/11	3/8	1/1	0/0	5	3	0
Fastbreak	1/1				0	0	0

Defense by type

	Total	9m	6m	Wing	Stl.	C7	2m
Def. 6-0	8/16	3/8	0/1	1/2	1	1	0
Def. 5-1	10/23	3/8	1/3	2/4	3	2	0
Def. 4-2	1/2	1/2	0/0	0/0	0	0	0
Fastbreak	2/2				0	0	1

Attack with superiority / minority / goalkeeper out

	Attack				Reaction		
	Att.	Eff.	Shots	TF	FB	LD	Tot.
7 on 6 (GK out)	4	50%	2/3	1	0/0	0/0	0/0
6 on 6 (GK out)	2	100%	2/2	0	0/0	0/0	0/0
6 on 6	52	42%	22/41	11			

Player superiority / GK out counted at the end of attack (in case it changes during attack)

Defense with superiority / minority / goalkeeper out

	Attack				Reaction		
	Att.	Eff.	Shots	TF	FB	LD	Tot.
7 on 6 (GK out)	4	75%	3/3	1	0/0	0/0	0/0
6 on 6	51	43%	22/41	10			
6 on 5	3	0%	0/2	1			

Numbers show attacking numbers of opponent. Lower efficiency of opponent means better defense of this team

Jersey number Tot. Total shooting 6m 6m (line) shooting 9m 9m shooting Wng Wing shooting FB Fastbreak sh. 7m 7m penalty sh.
 Brk. Breakthrough sh. LD Long distance sh. As. Assists PC Pass clear chance E7 Earned 7m pen. TF Technical faults St. Steals
 2m 2m punishments C7. Committed 7m E2 Earned 2m pun. YC. Yellow cards R/B Red/Blue cards Blk. Blocks S Starting Line-up



24th IHF Women's Junior (U20) World Championship



Main Round - Group IV, 2. round

Match Team Statistics

Match No. 71

Portugal 26 - 25 Iceland

(12 - 11) (14 - 14)

25.6.2024. 18:00

Attendance: 91

Sport Centre Boris Trajkovski

Referees: Vladimir Jovandic (SRB) / Marko Sekulic (SRB)

Shot distribution by player

Player	Goals	Assists	7m	Fastbreak	Breakthrough	Long dist.
2 M. Pico	0	0	0	0	0	0
3 L. Jesus	0	0	0	0	1	1
4 B. Mendes	0	0	0	0	0	0
5 S. Ferreira	2	2	1	1	0	0
7 L. Ribeiro	0	0	0	0	0	0
8 C. Sequeira	1	1	2	0	1	1
10 V. Tabuada	0	0	0	0	0	0
13 J. Figueira	3	3	0	0	0	0
17 J. Semedo	0	0	0	0	0	0
19 M. Correia	0	0	0	0	0	0
25 L. Rebelo	0	0	0	0	0	0
27 C. Silva	1	1	0	0	0	0
81 C. Figueiredo	0	0	0	0	1	1
TOTAL	6	6	9	1	10	14

1 miss.

1 post 2 miss.

1 miss.

1 block

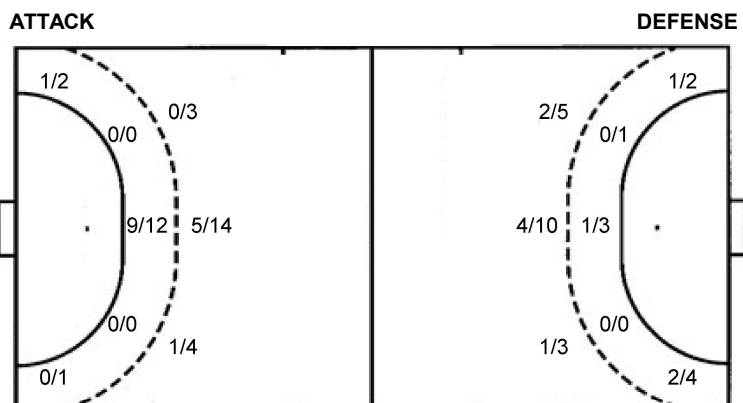
1 miss.

1 post 5 miss. 1 block

Saves distribution goalkeepers

Goalkeeper	Goals	Assists	7m	Fastbreak	Breakthrough	Long dist.
1 R. Guimaraes	0	0	0	0	0	0
12 M. Rosa	1	2	4	6	3	4
16 M. Silva	0	1	0	0	0	0
TOTAL	1	5	2	5	3	4

Shots by position



7m penalties 2/4
Fastbreak 1/1
Breakthrough 7/10
Long dist. 0/0

7m penalties 3/3
Fastbreak 2/2
Breakthrough 9/14
Long dist. 0/1

Shooting statistics

Position	Goals	Sav.	Miss.	Post	Blk.	Total	%
Back (9m)	6	11	2	1	1	21	29
Line (6m)	9	3	0	0	0	12	75
Wing	1	1	1	0	0	3	33
7m penalties	2	2	0	0	0	4	50
Fastbreak	1	0	0	0	0	1	100
Breakthrough	7	1	2	0	0	10	70
Total	26	18	5	1	1	51	51

Jersey number Tot. Total shooting 6m 6m (line) shooting 9m 9m shooting Wng Wing shooting FB Fastbreak sh. 7m 7m penalty sh.
Brk. Breakthrough sh. LD Long distance sh. As. Assists PC Pass clear chance E7 Earned 7m pen. TF Technical faults St. Steals
2m 2m punishments C7. Committed 7m E2 Earned 2m pun. YC. Yellow cards R/B Red/Blue cards Blk. Blocks S Starting Line-up

Handball statistics and livescore by Toma-soft ltd (www.toma-soft.hr)



24th IHF Women's Junior (U20) World Championship



Main Round - Group IV, 2. round

Match Team Statistics
Match No. 71

Portugal 26 - 25 Iceland
(12 - 11) (14 - 14)

25.6.2024. 18:00
Attendance: 91
Sport Centre Boris Trajkovski

Referees: Vladimir Jovandic (SRB) / Marko Sekulic (SRB)

Iceland

#	Surname and name	S	Goals / shots								Attack				Def.			Penalties				TP	
			Tot.	%	9m	6m	Wing	7m	FB	Brk.	LD	As.	PC	E7	E2	TF	St.	C7	Blk	YC	2m		R
2	THORKELSDÓTTIR Elin Klara	S	8/14	57	1/4					7/9	0/1		2		1	4	2						56:24
3	ODDSDÓTTIR HAGALÍN Alfa Brá	S	2/5	40	2/4					0/1							1	1	1				28:22
4	BENEDIKTSÓTTIR Brynja Katrín																						4:02
5	TRAUSTADÓTTIR Tinna Sigurrós	S	3/7	43	3/6					0/1		2			1								48:04
6	ÁSMUNDSÓTTIR Katrín Anna	S	3/5	60			2/3		1/1	0/1					3								52:31
7	JÓNSDÓTTIR Hildur Lilja																						
8	JÓHANNSDÓTTIR Inga Dís		3/3	100	1/1				1/1	1/1							2						17:44
11	GUDMUNDSÓTTIR Rakel Oddny		1/1	100			1/1																35:07
12	BJARNASEN Ethel Gyda	S													1								59:18
13	THORBJÖRNSDÓTTIR Elínborg Kattla																						
14	ELÍASDÓTTIR Elísa	S	1/5	20	0/1	1/4							1		1								56:02
15	SIGSTEINSDÓTTIR Sonja Lind		1/2	50			0/1		1/1														5:57
18	ÁGÜTSÓTTIR Lilja	S	3/4	75			0/1	3/3							1								22:10
19	STEINDÓRSÓTTIR Embla		0/2	0	0/2							3	2	2	1		1						33:04
32	INGADÓTTIR Anna Karólína																						0:30
35	JÓNSDÓTTIR Sýlvía Sigrídur																						
Team / bench																							
UKUPNO			25/48	52	7/18	1/4	3/6	3/3	2/2	9/14	0/1	5	4	3	1	12	3	4	1	0	0	0	0

#	Surname and name	Saves / shots								
		Tot.	%	9m	6m	Wing	7m	FB	Brk.	LD
12	BJARNASEN Ethel Gyda	18/43	42	11/17	3/12	1/2	2/3	0/1	1/8	
32	INGADÓTTIR Anna Karólína	0/1	0				0/1			
TOTAL		18/44	41	11/17	3/12	1/2	2/4	0/1	1/8	0/0

Coach: **Agústhór Jóhannsson**

Number of attacks: 58, Efficiency: 43%, Average Duration: 34.62 seconds

Attack by type of defense

	Shots	9m	6m	Wing	TF	E7	E2
On def. 6-0	8/16	3/8	0/1	1/2	3	1	0
On def. 5-1	10/23	3/8	1/3	2/4	8	2	1
On def. 4-2	1/2	1/2	0/0	0/0	1	0	0
Fastbreak	2/2				0	0	0

Defense by type

	Total	9m	6m	Wing	Stl.	C7	2m
Def. 6-0	17/35	3/13	8/11	1/3	2	1	0
Def. 5-1	6/11	3/8	1/1	0/0	1	3	0
Fastbreak	1/1				0	0	0

Attack with superiority / minority / goalkeeper out

	Attack				Reaction		
	Att.	Eff.	Shots	TF	FB	LD	Tot.
7 on 6 (GK out)	4	75%	3/3	1	0/0	0/0	0/0
6 on 6	51	43%	22/41	10			
6 on 5	3	0%	0/2	1			

Player superiority / GK out counted at the end of attack (in case it changes during attack)

Defense with superiority / minority / goalkeeper out

	Attack				Reaction		
	Att.	Eff.	Shots	TF	FB	LD	Tot.
7 on 6 (GK out)	4	50%	2/3	1	0/0	0/0	0/0
6 on 6 (GK out)	2	100%	2/2	0	0/0	0/0	0/0
6 on 6	52	42%	22/41	11			

Numbers show attacking numbers of opponent. Lower efficiency of opponent means better defense of this team

Jersey number Tot. Total shooting 6m 6m (line) shooting 9m 9m shooting Wng Wing shooting FB Fastbreak sh. 7m 7m penalty sh.
Brk. Breakthrough sh. LD Long distance sh. As. Assists PC Pass clear chance E7 Earned 7m pen. TF Technical faults St. Steals
2m 2m punishments C7. Committed 7m E2 Earned 2m pun. YC. Yellow cards R/B Red/Blue cards Blk. Blocks S Starting Line-up



24th IHF Women's Junior (U20) World Championship



Main Round - Group IV, 2. round

Match Team Statistics

Match No. 71

Portugal 26 - 25 Iceland

(12 - 11) (14 - 14)

25.6.2024. 18:00

Attendance: 91

Sport Centre Boris Trajkovski

Referees: Vladimir Jovandic (SRB) / Marko Sekulic (SRB)

Shot distribution by player

2 E. Thorkelsdóttir

2/2		1/1
0/2	0/2	1/1
2/2		2/2

1 post 1 miss.

3 A. Oddsdóttir Hagalín

		0/1
2/2		

2 miss.

4 B. Benediktsdóttir

5 T. Traustadóttir

1/1		
2/2		0/1
		0/1

2 miss.

6 K. Ásmundsdóttir

	1/1	
1/1		

1 post 1 miss. 1/1 lob

7 H. Jónsdóttir

8 I. Jóhannsdóttir

	1/1	
2/2		

11 R. Gudmundsdóttir

1/1		

13 E. Thorbjörnsdóttir

14 E. Elíasdóttir

1/1	0/1	0/1
0/1		

0/1 lob

15 S. Sigsteinsdóttir

		1/2

18 L. Ágútsdóttir

1/2		1/1
		1/1

19 E. Steindórsdóttir

	0/1	

1 block

35 S. Jónsdóttir

TOTAL

4/5		2/2
3/5	2/6	1/4
8/9		4/6

2 post 6 miss. 1 block 1/2 lob

Saves distribution goalkeepers

12 E. Bjarnasen

0/4	1/1	1/5
4/10	3/4	1/2
3/8	2/3	3/6

32 A. Ingadóttir

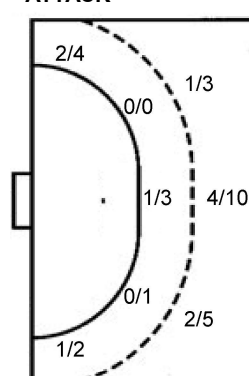
0/1		

TOTAL

0/4	1/1	1/5
4/10	3/4	1/2
3/9	2/3	3/6

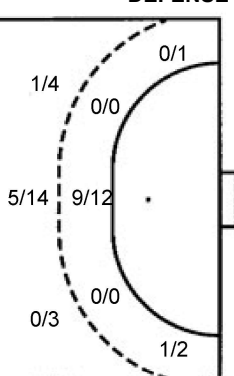
Shots by position

ATTACK



7m penalties 3/3
Fastbreak 2/2
Breakthrough 9/14
Long dist. 0/1

DEFENSE



7m penalties 2/4
Fastbreak 1/1
Breakthrough 7/10
Long dist. 0/0

Shooting statistics

Position	Goals	Sav.	Miss.	Post	Blk.	Total	%
Back (9m)	7	5	5	0	1	18	39
Line (6m)	1	3	0	0	0	4	25
Wing	3	2	1	0	0	6	50
7m penalties	3	0	0	0	0	3	100
Fastbreak	2	0	0	0	0	2	100
Breakthrough	9	3	0	2	0	14	64
Total	25	13	6	2	1	47	53

Jersey number Tot. Total shooting 6m 6m (line) shooting 9m 9m shooting Wng Wing shooting FB Fastbreak sh. 7m 7m penalty sh.
Brk. Breakthrough sh. LD Long distance sh. As. Assists PC Pass clear chance E7 Earned 7m pen. TF Technical faults St. Steals
2m 2m punishments C7. Committed 7m E2 Earned 2m pun. YC. Yellow cards R/B Red/Blue cards Blk. Blocks S Starting Line-up

Handball statistics and livescore by Toma-soft ltd (www.toma-soft.hr)

