



24th IHF Women's Junior (U20) World Championship



Main Round - Group I, 2. round

Match Team Statistics

Match No. 66

Romania 32 - 23 Egypt

(16 - 7) (16 - 16)

25.6.2024. 15:45

Attendance: 100

Sport Centre Jane Sandanski

Referees: Novica Mitrovic (MNE) / Miljan Vesovic (MNE)

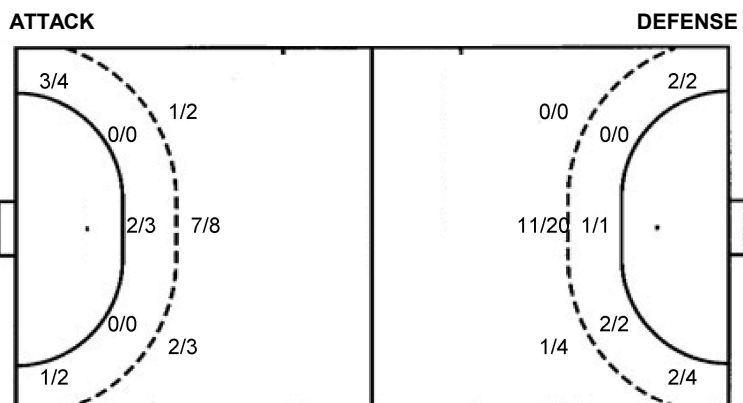
Shot distribution by player

2 M. Mihai	5 A. Grigore	8 M. Mezei	15 S. Brîndușa	21 I. Maxim	22 C. Raicea	24 A. Boiciuc
0/1 1/1 2/2 1 post	0/1 0/2 1/1 2/2 1 post 1 miss.	1/1 0/1		1/1 2/2 2 post	1/1	1/1 1/2 2/2 1 miss.
28 M. Lițăndroi	51 E. Drăgoescu	55 C. Danciu	56 D. Romaniuc	88 L. Florea	98 C. Irimia	TOTAL
0/1 1/1	1/1 1/1		1/1 1/1 1/1 1 miss.	1/1 1/1 1/1	1/1 1/2 1/1	4/6 0/1 1/1 3/3 3/5 2/4 5/5 5/6 8/9 4 post 3 miss.

Saves distribution goalkeepers

1 T. Neagu	12 A. Cristea	16 I. Niță	TOTAL
0/1 1/1 0/3 2/6 0/1 1/5	0/1 0/2	1/2 1/1 0/2 0/3	0/1 2/3 1/5 1/1 2/8 0/2 1/10

Shots by position



7m penalties	0/2	7m penalties	1/2
Fastbreak	5/6	Fastbreak	0/0
Breakthrough	9/14	Breakthrough	3/7
Long dist.	2/5	Long dist.	0/0

Shooting statistics

Position	Goals	Sav.	Miss.	Post	Blk.	Total	%
Back (9m)	10	1	1	1	0	13	77
Line (6m)	2	1	0	0	0	3	67
Wing	4	1	1	0	0	6	67
7m penalties	0	1	0	1	0	2	0
Fastbreak	5	1	0	0	0	6	83
Breakthrough	9	3	1	1	0	14	64
Total	30	8	3	3	0	44	68

Jersey number Tot. Total shooting 6m 6m (line) shooting 9m 9m shooting Wng Wing shooting FB Fastbreak sh. 7m 7m penalty sh.
 Brk. Breakthrough sh. LD Long distance sh. As. Assists PC Pass clear chance E7 Earned 7m pen. TF Technical faults St. Steals
 2m 2m punishments C7. Committed 7m E2 Earned 2m pun. YC. Yellow cards R/B Red/Blue cards Blk. Blocks S Starting Line-up



24th IHF Women's Junior (U20) World Championship



Main Round - Group I, 2. round

Match Team Statistics

Match No. 66

Romania 32 - 23 Egypt

(16 - 7) (16 - 16)

25.6.2024. 15:45

Attendance: 100

Sport Centre Jane Sandanski

Referees: Novica Mitrovic (MNE) / Miljan Vesovic (MNE)

Egypt

#	Surname and name	S	Goals / shots								Attack					Def.			Penalties				TP					
			Tot.	%	9m	6m	Wing	7m	FB	Brk.	LD	As.	PC	E7	E2	TF	St.	C7	Blk	YC	2m	R		B				
1	ASHRAF ABDELGANY Lubna																											19:13
2	MOHAMED SONBOL Mona																											30:19
4	ASHRAF ELBARKY Sara																											
5	AHMED ABDELFATTAH Nawal		0/1	0	0/1																							1:54
8	OMAR IBRAHIM Mariam	S	5/8	63	1/1	1/1	2/2																					39:53
9	MAHMOUD ELSHEREF Shrouk																											10:31
11	OSAMA ABDALLA Lojin	S	3/12	25	3/11																							43:31
14	HATEM SALAMA Kenzy	S	1/2	50		1/1	0/1																					29:21
15	EHAB ABOSHWEKA Noha		3/5	60	2/4																							14:17
17	TAMER ATAWEYA Nada		1/1	100		1/1																						26:58
22	KAMEL GADALLAH Touka		3/5	60	2/3			0/1																				39:35
25	AHMED MOHAMED Malak	S																										43:05
28	TAREK ABDELRAHMAN Nadein	S	5/5	100	4/4			1/1																				30:41
89	MAHMOUD ORABY Fatma	S																										31:31
98	WAEEL SAYED Gihad	S																										28:26
99	SALAHELDIN ABDELKADER Jana		2/3	67			2/3																					30:00
	Team / bench																											
	UKUPNO		23/42	55	12/24	3/3	4/6	1/2	0/0	3/7	0/0																	

#	Surname and name	Saves / shots								
		Tot.	%	9m	6m	Wing	7m	FB	Brk.	LD
1	ASHRAF ABDELGANY Lubna	1/11	9	0/5	1/1	0/1		0/1	0/3	
98	WAEEL SAYED Gihad	8/27	30	1/6	0/1	1/4	1/1	1/5	3/9	1/1
	TOTAL	9/38	24	1/11	1/2	1/5	1/1	1/6	3/12	1/1

Coach: Ramy Abdellatif Mohamed

Number of attacks: 63, Efficiency: 37%, Average Duration: 37.13 seconds

Attack by type of defense

	Shots	9m	6m	Wing	TF	E7	E2
On def. 6-0	22/40	12/24	3/3	4/6	24	2	1
Fastbreak	0/0				0	0	0

Defense by type

	Total	9m	6m	Wing	Stl.	C7	2m
Def. 6-0	18/24	7/9	1/2	3/4	5	1	0
Def. 4-2	7/11	3/4	1/1	1/2	1	0	0
Def. 3-3	0/1	0/0	0/0	0/0	0	1	0
Fastbreak	5/6				0	0	2

Attack with superiority / minority / goalkeeper out

	Attack				Reaction		
	Att.	Eff.	Shots	TF	FB	LD	Tot.
7 on 6 (GK out)	24	54%	13/18	6	2/2	2/4	4/6
6 on 6 (GK out)	5	20%	1/4	1	0/0	0/1	0/1
6 on 6	32	25%	8/16	16			
6 on 5	2	50%	1/1	1			

Player superiority / GK out counted at the end of attack (in case it changes during attack)

Defense with superiority / minority / goalkeeper out

	Attack				Reaction		
	Att.	Eff.	Shots	TF	FB	LD	Tot.
7 on 6 (GK out)	2	100%	2/2	0	0/0	0/0	0/0
6 on 6 (GK out)	2	100%	2/2	0	0/0	0/0	0/0
6 on 6	52	50%	26/40	12			
6 on 5	7	29%	2/4	3			

Numbers show attacking numbers of opponent. Lower efficiency of opponent means better defense of this team

Jersey number Tot. Total shooting 6m 6m (line) shooting 9m 9m shooting Wng Wing shooting FB Fastbreak sh. 7m 7m penalty sh.
 Brk. Breakthrough sh. LD Long distance sh. As. Assists PC Pass clear chance E7 Earned 7m pen. TF Technical faults St. Steals
 2m 2m punishments C7. Committed 7m E2 Earned 2m pun. YC. Yellow cards R/B Red/Blue cards Blk. Blocks S Starting Line-up



24th IHF Women's Junior (U20) World Championship



Main Round - Group I, 2. round

Match Team Statistics

Match No. 66

Romania 32 - 23 Egypt

(16 - 7) (16 - 16)

25.6.2024. 15:45

Attendance: 100

Sport Centre Jane Sandanski

Referees: Novica Mitrovic (MNE) / Miljan Vesovic (MNE)

Shot distribution by player

2 M. Mohamed Sonbol

4 S. Ashraf Elbarky

5 N. Ahmed Abdelfattah

		0/1

8 M. Omar Ibrahim

2/2		
1/1		2/2

2 post 1 miss.

9 S. Mahmoud Elsheref

11 L. Osama Abdalla

		1/2
		0/1
2/4		

3 post 2 block

14 K. Hatem Salama

		1/1

1 post

15 N. Ehab Aboshweka

1/1		
1/1	1/1	

1 miss. 1 block

17 N. Tamer Ataweya

	1/1	

22 T. Kamel Gadallah

1/2		
		2/2

1 miss.

25 M. Ahmed Mohamed

28 N. Tarek Abdelrahman

1/1		4/4

89 F. Mahmoud Oraby

99 J. Salaheldin Abdelkader

	1/1	0/1
1/1		

TOTAL

	1/1	1/3
4/5		0/1
6/8	2/2	9/10

6 post 3 miss. 3 block

Saves distribution goalkeepers

1 L. Ashraf Abdelgany

0/2		
0/1		0/1
0/1	0/2	1/4

98 G. Wael Sayed

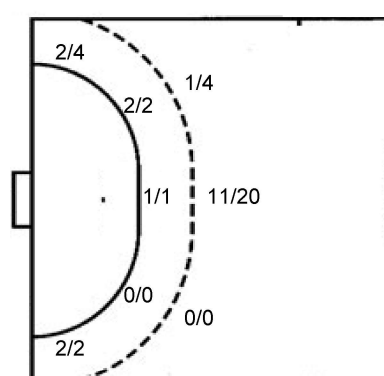
2/4	1/1	0/1
0/2	2/3	2/3
0/4	1/4	0/5

TOTAL

2/6	1/1	0/1
0/3	2/3	2/4
0/5	1/6	1/9

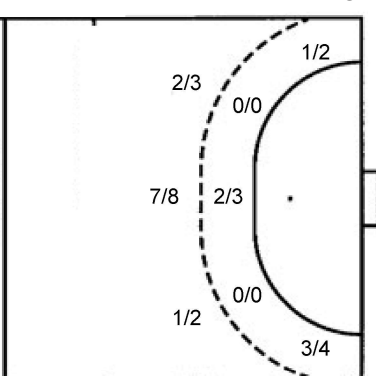
Shots by position

ATTACK



7m penalties	1/2
Fastbreak	0/0
Breakthrough	3/7
Long dist.	0/0

DEFENSE



7m penalties	0/2
Fastbreak	5/6
Breakthrough	9/14
Long dist.	2/5

Shooting statistics

Position	Goals	Sav.	Miss.	Post	Blk.	Total	%
Back (9m)	12	5	2	2	3	24	50
Line (6m)	3	0	0	0	0	3	100
Wing	4	1	0	1	0	6	67
7m penalties	1	1	0	0	0	2	50
Fastbreak	0	0	0	0	0	0	0
Breakthrough	3	0	1	3	0	7	43
Total	23	7	3	6	3	42	55

Jersey number Tot. Total shooting 6m 6m (line) shooting 9m 9m shooting Wng Wing shooting FB Fastbreak sh. 7m 7m penalty sh.
 Brk. Breakthrough sh. LD Long distance sh. As. Assists PC Pass clear chance E7 Earned 7m pen. TF Technical faults St. Steals
 2m 2m punishments C7. Committed 7m E2 Earned 2m pun. YC. Yellow cards R/B Red/Blue cards Blk. Blocks S Starting Line-up



24th IHF Women's Junior (U20) World Championship



Main Round - Group I, 2. round

Match Team Statistics

Match No. 66

Romania 32 - 23 Egypt

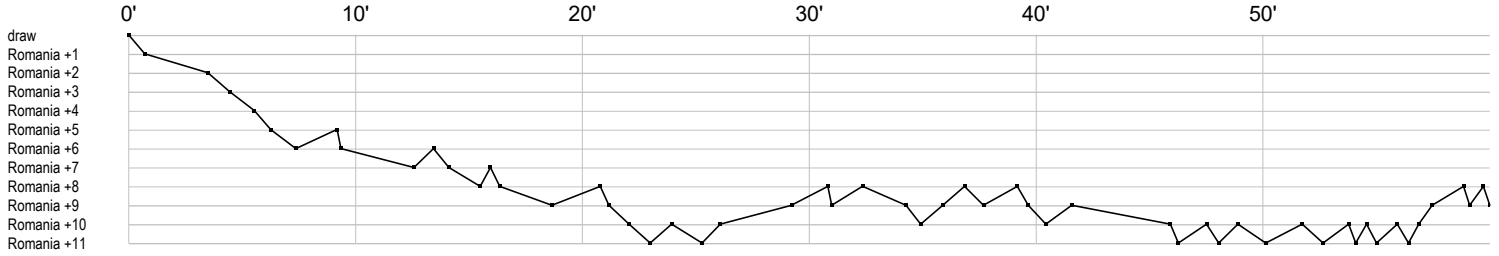
(16 - 7) (16 - 16)

25.6.2024. 15:45

Attendance: 100

Sport Centre Jane Sandanski

Referees: Novica Mitrovic (MNE) / Miljan Vesovic (MNE)



Romania

1 Neagu T	s s ts r r r s tr r r r r
2 Mihai M	g g b g f f g
5 Grigore A	g a f f a g g f p f p f
8 Mezei M	r r f r
12 Cristea A	r r f r
15 Brîndușa S	t
16 Niță I	s r r g r s s a r r r r
21 Maxim I	p g 2 g g p i g x f f
22 Raicea C	t g
24 Boiciuc A	a bp a g t a c g t t g f a a g p g t t f
28 Lixândroi M	f a f x g t
51 Drăgoescu E	g t a t
55 Danciu C	x t ei
56 Romaniuc D	g g f c g
88 Florea L	p a t g t a g g p
98 Irimia C	g g g f g

Egypt

1 Ashraf	r r r r r
2 Mohamed	t
4 Ashraf	
5 Ahmed	t f
8 Omar Ibrahim	b f t g i g fbg f t t p g
9 Mahmoud	t 2
11 Osama	f f f f bf c2 g f f g f g ab
14 Hatem	t f g
15 Ehab	g f gt t gf t
17 Tamer	t t t gbt
22 Kamel	g f f ba g e g
25 Ahmed	t t e t p p a t
28 Tarek	t t g g t g g g a c a a
89 Mahmoud	t
98 Wael Sayed	r s r r sr r r s r r r r
99 Salaheldin	r s r sr r s s s rr r r r f g g

In game	g Goal scored	f Missed shot	a Assist	t Technical faults	b Steal
2 2min suspension	e Earned 7m	c Committed 7m	y Yellow card	r Red Card	k Blue card
i Earned 2min.	x Block	4 4min suspension	p Pass for clear chance	s Saved shot	r Received goal