



24th IHF Women's Junior (U20) World Championship



President's Cup - Group IV, 1. round

Match Team Statistics

Guinea 22 - 15 USA

24.6.2024. 11:45

Match No. 63

(11 - 6) (11 - 9)

Attendance: 80

Sport Centre Boris Trajkovski

Referees: Mohammed J. Alsaqer (KSA) / Ali M. Alsuqfi (KSA)

Guinea

#	Surname and name	S	Goals / shots								Attack					Def.			Penalties			TP				
			Tot.	%	9m	6m	Wing	7m	FB	Brk.	LD	As.	PC	E7	E2	TF	St.	C7	Bik	YC	2m		R	B		
1	SOUMAH Fatoumata	S																								4:48
2	BANGOURA Mariama		4/5	80		1/1	1/1		1/1	1/2		1	2		1	4		1								35:14
3	SOUMAH Diaraye														1											10:55
5	DIALLO Aissatou	S	0/4	0		0/1	0/2			0/1		3	1			1	1									42:25
6	DIASSY Fatoumata Binta		2/3	67		1/2			1/1							1							1			25:04
8	SANKHON Kadiatou		2/5	40			0/1		1/2	1/2				1		2	1	1					1			28:54
10	KONATE Mama	S	6/13	46	4/8				0/2	2/3		4	2			3	6		2							55:45
12	SOUMAH M'mah		2/4	50	0/1	0/1	1/1		1/1							2	1									17:25
13	CISSE Diakonba														1											14:39
15	SOUMAH Mayelie		0/2	0				0/2				1	2				1									26:24
16	CONTE M'mahawa	S	0/1	0	0/1							1														54:19
17	COUMBASSA Adama	S	2/4	50	0/1		2/2			0/1																19:41
18	KABA Aminata	S	0/1	0		0/1										1			1							19:41
23	KEITA Fatoumata	S	0/1	0			0/1							1	1	2	2									23:14
26	CAMARA Mariétou	S	3/3	100			1/1		1/1			1			1	1										14:13
30	BANGOURA Aicha		1/2	50	0/1	1/1									1											15:04
	Team / bench																									
	UKUPNO		22/48	46	4/12	3/7	5/9	0/2	5/8	4/9	1/1	10	8	2	2	19	14	2	3	0	2	0	0			

Goalkeepers		Saves / shots								
#	Surname and name	Tot.	%	9m	6m	Wing	7m	FB	Brk.	LD
1	SOUMAH Fatoumata	3/5	60	1/1	0/2	2/2				
16	CONTE M'mahawa	11/24	46	8/11	0/3	2/3	0/2	0/1	1/4	
	TOTAL	14/29	48	9/12	0/5	4/5	0/2	0/1	1/4	0/0

Coach: Lansana Dinalo Camara

Number of attacks: 65, Efficiency: 34%, Average Duration: 23.34 seconds

Attack by type of defense

	Shots	9m	6m	Wing	TF	E7	E2
On def. 6-0	13/31	4/12	1/4	5/8	16	1	1
On def. 5-1	1/3	0/0	0/0	0/1	3	1	1
Fastbreak	5/8				0	0	0

Defense by type

	Total	9m	6m	Wing	Stl.	C7	2m
Def. 6-0	6/18	2/9	2/2	1/5	6	0	0
Def. 5-1	4/15	0/8	2/2	0/2	8	2	0
Def. 4-2	1/2	1/2	0/0	0/0	0	0	0
Fastbreak	1/1				0	0	2

Attack with superiority / minority / goalkeeper out

	Attack				Reaction		
	Att.	Eff.	Shots	TF	FB	LD	Tot.
7 on 6 (GK out)	7	57%	4/6	1	0/0	0/0	0/0
6 on 6 (GK out)	2	50%	1/1	1	0/0	0/0	0/0
6 on 6	50	30%	15/35	15			
6 on 5	4	25%	1/3	1			
5 on 6	2	50%	1/1	1			

Player superiority / GK out counted at the end of attack (in case it changes during attack)

Defense with superiority / minority / goalkeeper out

	Attack				Reaction		
	Att.	Eff.	Shots	TF	FB	LD	Tot.
7 on 6 (GK out)	7	29%	2/4	3	0/0	1/1	1/1
6 on 6 (GK out)	3	0%	0/0	3	0/0	0/0	0/0
6 on 6	49	22%	11/30	19			
5 on 6	1	0%	0/0	1			
7 on 5 (GK out)	1	0%	0/0	1	0/0	0/0	0/0
6 on 5	4	50%	2/3	1			

Numbers show attacking numbers of opponent. Lower efficiency of opponent means better defense of this team

Jersey number Tot. Total shooting 6m 6m (line) shooting 9m 9m shooting Wng Wing shooting FB Fastbreak sh. 7m 7m penalty sh.
 Brk. Breakthrough sh. LD Long distance sh. As. Assists PC Pass clear chance E7 Earned 7m pen. TF Technical faults St. Steals
 2m 2m punishments C7. Committed 7m E2 Earned 2m pun. YC. Yellow cards R/B Red/Blue cards Blk. Blocks S Starting Line-up



24th IHF Women's Junior (U20) World Championship



President's Cup - Group IV, 1. round

Match Team Statistics

Match No. 63

Guinea 22 - 15 USA

(11 - 6) (11 - 9)

24.6.2024. 11:45

Attendance: 80

Sport Centre Boris Trajkovski

Referees: Mohammed J. Alsaqer (KSA) / Ali M. Alsuqfi (KSA)

Shot distribution by player

2 M. Bangoura

		1/1
0/1		
		1/1

2/2 lob

3 D. Soumah

1 post

5 A. Diallo

0/1	0/2	

1 post

6 F. Diassy

2/2		

1 miss.

8 K. Sankhon

0/1	0/1	0/1
1/1		1/1

10 M. Konate

1/1	0/1	1/1
0/1	1/1	
3/4		

1 post 2 miss. 0/1 lob

12 M. Soumah

		0/1
		1/1

1 miss. 1/1 lob

13 D. Cisse

15 M. Soumah

		0/1

1 post

17 A. Coumbassa

1/2		
1/1		

1 miss.

18 A. Kaba

0/1 lob

23 F. Keita

0/1		

26 M. Camara

		1/1
1/1	1/1	

30 A. Bangoura

1/1	0/1	

TOTAL

3/3	0/1	3/4
2/6	2/3	1/3
6/9	0/3	2/2

3 post 5 miss. 3/5 lob

Saves distribution goalkeepers

1 F. Soumah

2/3		
		1/2

16 M. Conte

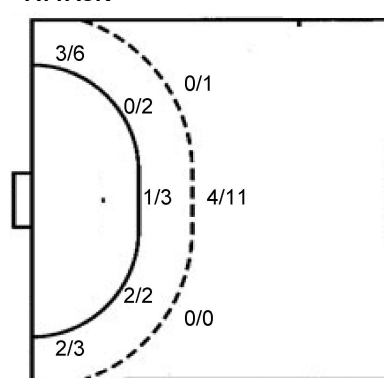
0/2		1/4
4/4		1/4
3/7	1/1	1/2

TOTAL

0/2		1/4
6/7		1/4
3/7	1/1	2/4

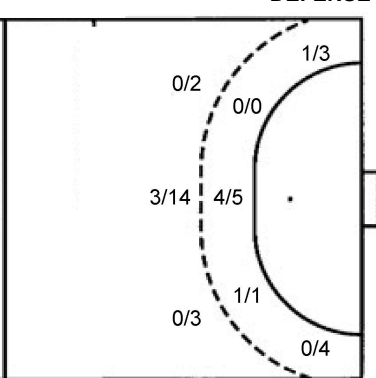
Shots by position

ATTACK



7m penalties 0/2
Fastbreak 5/8
Breakthrough 4/9
Long dist. 1/1

DEFENSE



7m penalties 2/2
Fastbreak 1/1
Breakthrough 3/5
Long dist. 0/0

Shooting statistics

Position	Goals	Sav.	Miss.	Post	Blk.	Total	%
Back (9m)	4	4	4	0	0	12	33
Line (6m)	3	3	1	0	0	7	43
Wing	5	3	0	1	0	9	56
7m penalties	0	1	0	1	0	2	0
Fastbreak	5	3	0	0	0	8	63
Breakthrough	4	4	0	1	0	9	44
Total	21	18	5	3	0	47	45

Jersey number Tot. Total shooting 6m 6m (line) shooting 9m 9m shooting Wng Wing shooting FB Fastbreak sh. 7m 7m penalty sh.
Brk. Breakthrough sh. LD Long distance sh. As. Assists PC Pass clear chance E7 Earned 7m pen. TF Technical faults St. Steals
2m 2m punishments C7. Committed 7m E2 Earned 2m pun. YC. Yellow cards R/B Red/Blue cards Blk. Blocks S Starting Line-up

Handball statistics and livescore by Toma-soft ltd (www.toma-soft.hr)



24th IHF Women's Junior (U20) World Championship



President's Cup - Group IV, 1. round

Match Team Statistics

Match No. 63

Guinea 22 - 15 USA

(11 - 6) (11 - 9)

24.6.2024. 11:45

Attendance: 80

Sport Centre Boris Trajkovski

Referees: Mohammed J. Alsaqer (KSA) / Ali M. Alsuqfi (KSA)

USA

Players		Goals / shots									Attack					Def.			Penalties			TP			
#	Surname and name	S	Tot.	%	9m	6m	Wing	7m	FB	Brk.	LD	As.	PC	E7	E2	TF	St.	C7	Blk	YC	2m		R	B	
1	MALYSZ Julia	S																							0:29
2	MARTINEZ Mayte		2/3	67		2/2	0/1									1									42:59
5	LICEA Daisy	S	5/9	56	1/5	2/2				2/2			2	1		4									47:48
6	HANNEVIK la Mathilde	S	1/5	20	0/3					1/2		2			2	10	1								56:44
7	DOBREFF Lovisa	S	2/9	22	0/7		2/2						1		2										29:09
8	JEONG Erin														2										15:52
10	DA CRUZ Isabella																								0:16
12	SUMALLA Amanda																								3:32
13	KREIS Viva	S	1/3	33			1/3								1	2									55:43
16	GRONWALD Lani	S													1										58:07
17	READY Maya	S	3/6	50	2/4	1/2						2	3	1	5	1	1				1				53:41
19	MENCHACA Sophia																								
21	FAULKNER Hanna																	1			1				12:13
23	NESPER Eden	S	1/5	20		0/3			1/1	0/1		1	1		2										34:22
Team / bench																									
UKUPNO			15/40	38	3/19	5/6	1/7	2/2	1/1	3/5	0/0	5	7	2	2	28	4	2	0	0	2	0	0		

Goalkeepers		Saves / shots								
#	Surname and name	Tot.	%	9m	6m	Wing	7m	FB	Brk.	LD
1	MALYSZ Julia									
16	GRONWALD Lani	18/39	46	4/8	3/6	3/8	1/1	3/8	4/8	
19	MENCHACA Sophia									
TOTAL		18/39	46	4/8	3/6	3/8	1/1	3/8	4/8	0/0

Coach: Hendrik Schultze

Number of attacks: 65, Efficiency: 23%, Average Duration: 31.94 seconds

Attack by type of defense

	Shots	9m	6m	Wing	TF	E7	E2
On def. 6-0	6/18	2/9	2/2	1/5	10	0	0
On def. 5-1	4/15	0/8	2/2	0/2	17	2	2
On def. 4-2	1/2	1/2	0/0	0/0	1	0	0
Fastbreak	1/1				0	0	0

Defense by type

	Total	9m	6m	Wing	Stl.	C7	2m
Def. 6-0	13/31	4/12	1/4	5/8	2	1	0
Def. 5-1	1/3	0/0	0/0	0/1	2	1	0
Fastbreak	5/8				0	0	2

Attack with superiority / minority / goalkeeper out

	Attack				Reaction		
	Att.	Eff.	Shots	TF	FB	LD	Tot.
7 on 6 (GK out)	7	29%	2/4	3	0/0	1/1	1/1
6 on 6 (GK out)	3	0%	0/0	3	0/0	0/0	0/0
6 on 6	49	22%	11/30	19			
5 on 6	1	0%	0/0	1			
7 on 5 (GK out)	1	0%	0/0	1	0/0	0/0	0/0
6 on 5	4	50%	2/3	1			

Player superiority / GK out counted at the end of attack (in case it changes during attack)

Defense with superiority / minority / goalkeeper out

	Attack				Reaction		
	Att.	Eff.	Shots	TF	FB	LD	Tot.
7 on 6 (GK out)	7	57%	4/6	1	0/0	0/0	0/0
6 on 6 (GK out)	2	50%	1/1	1	0/0	0/0	0/0
6 on 6	50	30%	15/35	15			
6 on 5	4	25%	1/3	1			
5 on 6	2	50%	1/1	1			

Numbers show attacking numbers of opponent. Lower efficiency of opponent means better defense of this team

Jersey number Tot. Total shooting 6m 6m (line) shooting 9m 9m shooting Wng Wing shooting FB Fastbreak sh. 7m 7m penalty sh.
 Brk. Breakthrough sh. LD Long distance sh. As. Assists PC Pass clear chance E7 Earned 7m pen. TF Technical faults St. Steals
 2m 2m punishments C7. Committed 7m E2 Earned 2m pun. YC. Yellow cards R/B Red/Blue cards Blk. Blocks S Starting Line-up



24th IHF Women's Junior (U20) World Championship



President's Cup - Group IV, 1. round

Match Team Statistics

Match No. 63

Guinea 22 - 15 USA

(11 - 6) (11 - 9)

24.6.2024. 11:45

Attendance: 80

Sport Centre Boris Trajkovski

Referees: Mohammed J. Alsaqer (KSA) / Ali M. Alsuqfi (KSA)

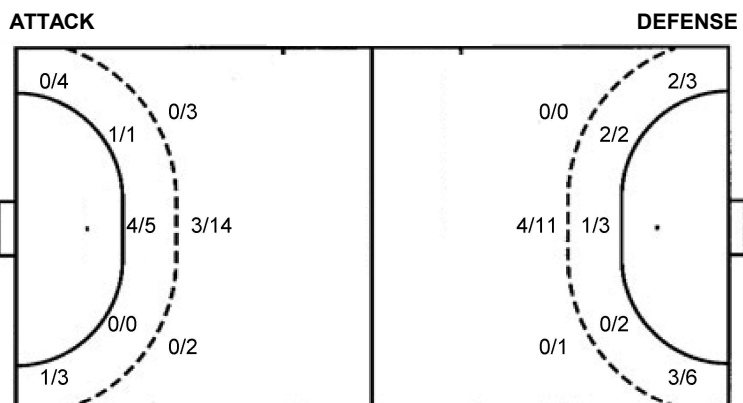
Shot distribution by player

2 M. Martinez 1/1 1/1 0/1	5 D. Licea 0/1 1/2 1/1 3/3 2 miss.	6 I. Hannevik 1/1 0/2 0/1 1 miss.	7 L. Dobreff 1/1 0/1 1/1 0/2 0/1 2 miss. 1 block	8 E. Jeong	10 I. Da Cruz	12 A. Sumalla
13 V. Kreis 0/1 1/1 1 post	17 M. Ready 1/1 0/1 2/2 1 post 1 block	21 H. Faulkner	23 E. Nesper 1/1 0/1 0/1 1 post 1 block	TOTAL 2/2 3/4 1/7 3/4 4/7 0/1 2/4 3 post 5 miss. 3 block		

Saves distribution goalkeepers

1 J. Malysz	16 L. Gronwald 0/3 1/1 1/4 4/6 1/2 2/3 4/10 3/3 0/2	19 S. Menchaca	TOTAL 0/3 1/1 1/4 4/6 1/2 2/3 4/10 3/3 0/2
--------------------	---	-----------------------	--

Shots by position



7m penalties	2/2	7m penalties	0/2
Fastbreak	1/1	Fastbreak	5/8
Breakthrough	3/5	Breakthrough	4/9
Long dist.	0/0	Long dist.	1/1

Shooting statistics

Position	Goals	Sav.	Miss.	Post	Blk.	Total	%
Back (9m)	3	9	5	0	2	19	16
Line (6m)	5	0	0	1	0	6	83
Wing	1	4	0	2	0	7	14
7m penalties	2	0	0	0	0	2	100
Fastbreak	1	0	0	0	0	1	100
Breakthrough	3	1	0	0	1	5	60
Total	15	14	5	3	3	40	38

Jersey number Tot. Total shooting 6m 6m (line) shooting 9m 9m shooting Wng Wing shooting FB Fastbreak sh. 7m 7m penalty sh.
 Brk. Breakthrough sh. LD Long distance sh. As. Assists PC Pass clear chance E7 Earned 7m pen. TF Technical faults St. Steals
 2m 2m punishments C7. Committed 7m E2 Earned 2m pun. YC. Yellow cards R/B Red/Blue cards Blk. Blocks S Starting Line-up

