



24th IHF Women's Junior (U20) World Championship



President's Cup - Group II, 1. round

Match Team Statistics
Match No. 59

Argentina 27 - 25 Chinese Taipei
(13 - 13) (14 - 12)

23.6.2024. 11:45
Attendance: 100
Sport Centre Jane Sandanski

Referees: Yasser Awwad (JOR) / Akram Alzayyat (JOR)

Argentina

#	Surname and name	S	Goals / shots								Attack					Def.			Penalties				TP					
			Tot.	%	9m	6m	Wing	7m	FB	Brk.	LD	As.	PC	E7	E2	TF	St.	C7	Blk	YC	2m	R		B				
1	SLAIBE Rocio	S	0/1	0											0/1													0:02
2	CABANA HOELER Ailin Eugenia		1/1	100						1/1						1				2	1							19:01
3	LAYUS Martina Pilar															1	1	1										4:19
4	GULL QUERIN Sofia	S	8/11	73	4/6	2/2				1/2				1/1		3	2			2	4	1				1		51:44
7	SATTO Paloma	S	2/3	67						2/3						1				1			2					44:32
8	KRUK Miranda		2/6	33	0/1	0/1								2/4		4	2			2	3							56:26
9	MANZO Kiara Belen	S	2/4	50		2/4										1		1							1			48:56
10	SPINELLI Azul	S	7/13	54	3/6					0/1				4/6		4	5	1	1	3			1					53:59
12	CARRASCO Florencia		0/1	0											0/1													22:00
16	CUADRADO Candelaria	S																										33:16
17	ORIOLO Zoe Morena		1/2	50		1/2																			1			21:52
19	REMOLQUE Candela Agustina																											
20	ALFREDI Magali Agustina		0/2	0	0/1					0/1																		6:01
22	CACERES lara Jazmin	S	1/2	50						1/2										4								31:15
23	STANICH Valentina		1/1	100						1/1										1								8:33
30	MARTINELLI Rocio Luciana		2/4	50						2/3				0/1						1	1	1	1					18:04
Team / bench																												
UKUPNO			27/51	53	7/14	5/9	6/11	1/2	1/2	7/11	0/2					13	10	3	4	19	6	2	4	0	3	0	0	

#	Surname and name	Saves / shots								
		Tot.	%	9m	6m	Wing	7m	FB	Brk.	LD
1	SLAIBE Rocio									
12	CARRASCO Florencia	8/18	44	0/2	1/3	2/6	1/2	0/1	4/4	
16	CUADRADO Candelaria	10/25	40	5/9	1/1	2/5	0/1	1/4	1/5	
TOTAL		18/43	42	5/11	2/4	4/11	1/3	1/5	5/9	0/0

Coach: **Hernan Carlos Siso**

Number of attacks: 68, Efficiency: 40%, Average Duration: 27.03 seconds

Attack by type of defense

	Shots	9m	6m	Wing	TF	E7	E2
On def. 6-0	6/10	3/4	1/3	1/1	3	0	1
On def. 3-2-1	18/33	3/9	4/6	5/9	16	2	2
On def. press.	1/2	1/1	0/0	0/1	0	1	1
Fastbreak	1/2				0	0	0

Defense by type

	Total	9m	6m	Wing	Stl.	C7	2m
Def. 6-0	19/46	6/16	2/4	7/12	6	2	3
Fastbreak	4/6				0	0	0

Attack with superiority / minority / goalkeeper out

	Attack				Reaction		
	Att.	Eff.	Shots	TF	FB	LD	Tot.
7 on 6 (GK out)	9	33%	3/5	4	0/0	0/0	0/0
6 on 6 (GK out)	6	17%	1/3	3	0/0	0/0	0/0
6 on 6	44	39%	17/32	12			
6 on 5	9	67%	6/9	0			

Player superiority / GK out counted at the end of attack (in case it changes during attack)

Defense with superiority / minority / goalkeeper out

	Attack				Reaction		
	Att.	Eff.	Shots	TF	FB	LD	Tot.
7 on 6 (GK out)	2	50%	1/2	0	0/0	0/0	0/0
6 on 6 (GK out)	4	0%	0/2	2	0/0	0/1	0/1
6 on 6	52	42%	22/40	12			
5 on 6	2	50%	1/1	1			
7 on 5 (GK out)	2	0%	0/2	0	0/0	0/0	0/0
6 on 5	5	20%	1/3	2			

Numbers show attacking numbers of opponent. Lower efficiency of opponent means better defense of this team

Jersey number Tot. Total shooting 6m 6m (line) shooting 9m 9m shooting Wng Wing shooting FB Fastbreak sh. 7m 7m penalty sh.
Brk. Breakthrough sh. LD Long distance sh. As. Assists PC Pass clear chance E7 Earned 7m pen. TF Technical faults St. Steals
2m 2m punishments C7. Committed 7m E2 Earned 2m pun. YC. Yellow cards R/B Red/Blue cards Blk. Blocks S Starting Line-up



24th IHF Women's Junior (U20) World Championship



President's Cup - Group II, 1. round

Match Team Statistics

Match No. 59

Argentina 27 - 25 Chinese Taipei

(13 - 13) (14 - 12)

23.6.2024. 11:45

Attendance: 100

Sport Centre Jane Sandanski

Referees: Yasser Awwad (JOR) / Akram Alzayyat (JOR)

Shot distribution by player

2 A. Cabana Hoeler

1/1		

3 M. Layus

4 S. Gull Querin

2/3		2/2
		0/1
		4/4

1 post

7 P. Satto

1/1		

1 post 1/1 lob

8 M. Kruk

1/1		1/1
		0/1

1 post 2 miss.

9 K. Manzo

1/2		1/2

10 A. Spinelli

4/5		
1/1		
1/3		1/2

1 post 1 miss.

17 Z. Oriolo

0/1		1/1

19 C. Remolque

20 M. Alfredi

0/1		

1 miss.

22 I. Caceres

0/1		1/1

23 V. Stanich

1/1 lob

30 R. Martinelli

1/2		
		1/1

1 miss.

TOTAL

8/11		3/3
1/1		1/2
4/10		8/11

4 post 5 miss. 2/2 lob

Saves distribution goalkeepers

1 R. Slaibe

12 F. Carrasco

0/1		
2/2		0/1
5/7		1/5

16 C. Cuadrado

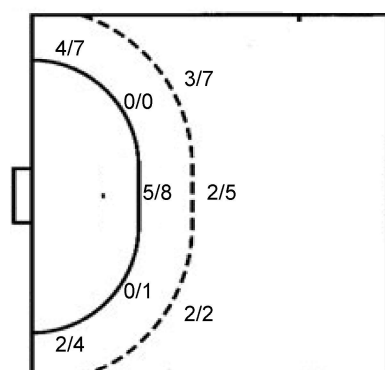
1/4		2/3
0/2		2/3
1/7		4/6

TOTAL

1/5		2/3
2/4		2/4
6/14		5/11

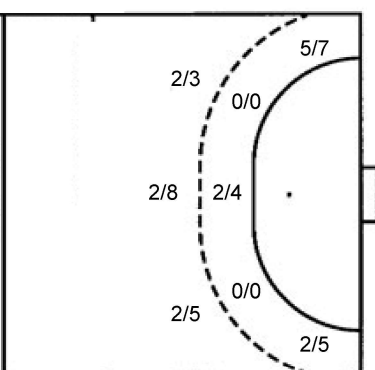
Shots by position

ATTACK



7m penalties 1/2
Fastbreak 1/2
Breakthrough 7/11
Long dist. 0/2

DEFENSE



7m penalties 2/3
Fastbreak 4/6
Breakthrough 4/14
Long dist. 0/0

Shooting statistics

Position	Goals	Sav.	Miss.	Post	Blk.	Total	%
Back (9m)	7	3	2	2	0	14	50
Line (6m)	5	3	1	0	0	9	56
Wing	6	3	1	1	0	11	55
7m penalties	1	1	0	0	0	2	50
Fastbreak	1	1	0	0	0	2	50
Breakthrough	7	2	1	1	0	11	64
Total	27	13	5	4	0	49	55

Jersey number Tot. Total shooting 6m 6m (line) shooting 9m 9m shooting Wng Wing shooting FB Fastbreak sh. 7m 7m penalty sh.
Brk. Breakthrough sh. LD Long distance sh. As. Assists PC Pass clear chance E7 Earned 7m pen. TF Technical faults St. Steals
2m 2m punishments C7. Committed 7m E2 Earned 2m pun. YC. Yellow cards R/B Red/Blue cards Blk. Blocks S Starting Line-up

Handball statistics and livescore by Toma-soft ltd (www.toma-soft.hr)



24th IHF Women's Junior (U20) World Championship



President's Cup - Group II, 1. round

Match Team Statistics
Match No. 59

Argentina 27 - 25 Chinese Taipei
(13 - 13) (14 - 12)

23.6.2024. 11:45
Attendance: 100
Sport Centre Jane Sandanski

Referees: Yasser Awwad (JOR) / Akram Alzayyat (JOR)

Chinese Taipei

Players		Goals / shots									Attack				Def.			Penalties				TP				
#	Surname and name	S	Tot.	%	9m	6m	Wing	7m	FB	Brk.	LD	As.	PC	E7	E2	TF	St.	C7	Blk	YC	2m	R	B			
1	WU Hsin Yun	S												1			1								48:42	
7	SHIH Chi Chiao En	S	3/7	43	0/2		3/5						1	1			5	1							43:31	
8	TIEN Yun Ju	S	5/11	45	2/3		1/2		0/1	2/5			4	1					1			1			52:20	
10	CHEN Yen Chun	S	2/7	29	1/2		1/2		0/1	0/2			3	3		1	2	2							52:04	
14	YU Chien Yu																								0:03	
18	LI Hsin Yi	S																							8:51	
19	YU Chia Ying																									
23	CHANG Fu Ying																							1	20:58	
24	LIEN Yi Ling		7/13	54	2/6	1/1	1/1		3/3	0/2			3	2	1	1	2	1	1			1			57:27	
28	LI Yun Ci																									
29	LIN Ching																									
36	CHUAN Heng Yi																								0:01	
66	LEE Ying Chi		5/10	50	1/2	0/1	1/1	0/1	1/1	2/4			1				6	1							40:04	
77	HSU Fang Ying	S	0/2	0	0/1	0/1								1	1		1						1		43:06	
79	CHANG Ya Ting	S	3/5	60		1/1	0/1	2/2		0/1				4	2			2							52:53	
88	YANG I Chen																									
	Team / bench																									
	UKUPNO		25/55	45	6/16	2/4	7/12	2/3	4/6	4/14	0/0		12	13	4	2	17	7	2	0	0	4	0	0		

Goalkeepers		Saves / shots								
#	Surname and name	Tot.	%	9m	6m	Wing	7m	FB	Brk.	LD
1	WU Hsin Yun	11/34	32	3/8	1/5	3/8	1/2	1/2	2/9	
18	LI Hsin Yi	2/6	33	0/2	2/3	0/1				
	TOTAL	13/40	33	3/10	3/8	3/9	1/2	2/2	2/9	0/0

Coach: **Ling Hui Chia**

Number of attacks: 67, Efficiency: 37%, Average Duration: 26.70 seconds

Attack by type of defense

	Shots	9m	6m	Wing	TF	E7	E2
On def. 6-0	19/46	6/16	2/4	7/12	17	4	2
Fastbreak	4/6				0	0	0

Defense by type

	Total	9m	6m	Wing	Stl.	C7	2m
Def. 6-0	6/10	3/4	1/3	1/1	2	0	0
Def. 3-2-1	18/33	3/9	4/6	5/9	5	2	2
Def. press.	1/2	1/1	0/0	0/1	0	0	0
Fastbreak	1/2				0	0	2

Attack with superiority / minority / goalkeeper out

	Attack				Reaction		
	Att.	Eff.	Shots	TF	FB	LD	Tot.
7 on 6 (GK out)	2	50%	1/2	0	0/0	0/0	0/0
6 on 6 (GK out)	4	0%	0/2	2	0/0	0/1	0/1
6 on 6	52	42%	22/40	12			
5 on 6	2	50%	1/1	1			
7 on 5 (GK out)	2	0%	0/2	0	0/0	0/0	0/0
6 on 5	5	20%	1/3	2			

Player superiority / GK out counted at the end of attack (in case it changes during attack)

Defense with superiority / minority / goalkeeper out

	Attack				Reaction		
	Att.	Eff.	Shots	TF	FB	LD	Tot.
7 on 6 (GK out)	9	33%	3/5	4	0/0	0/0	0/0
6 on 6 (GK out)	6	17%	1/3	3	0/0	0/0	0/0
6 on 6	44	39%	17/32	12			
6 on 5	9	67%	6/9	0			

Numbers show attacking numbers of opponent. Lower efficiency of opponent means better defense of this team

Jersey number Tot. Total shooting 6m 6m (line) shooting 9m 9m shooting Wng Wing shooting FB Fastbreak sh. 7m 7m penalty sh.
Brk. Breakthrough sh. LD Long distance sh. As. Assists PC Pass clear chance E7 Earned 7m pen. TF Technical faults St. Steals
2m 2m punishments C7. Committed 7m E2 Earned 2m pun. YC. Yellow cards R/B Red/Blue cards Blk. Blocks S Starting Line-up



24th IHF Women's Junior (U20) World Championship



President's Cup - Group II, 1. round

Match Team Statistics

Match No. 59

Argentina 27 - 25 Chinese Taipei

(13 - 13) (14 - 12)

23.6.2024. 11:45

Attendance: 100

Sport Centre Jane Sandanski

Referees: Yasser Awwad (JOR) / Akram Alzayyat (JOR)

Shot distribution by player

7 C. Shih

0/1		0/1
2/2		0/1

1 block 1/1 lob

8 Y. Tien

1/1		0/1
		1/2
2/6		1/1

10 Y. Chen

1/1		
		1/2

2 post 1 miss. 1 block

14 C. Yu

19 C. Yu

23 F. Chang

24 Y. Lien

1/1		1/2
		1/1
2/2		2/3

1 post 2 miss. 1 block

28 Y. Li

29 C. Lin

36 H. Chuan

66 Y. Lee

1/2		
2/3		
1/3		

1 miss. 1/1 lob

77 F. Hsu

		0/1

1 block

79 Y. Chang

1/1		2/3

1 miss.

88 I. Yang

TOTAL

4/5		1/3
2/4		2/4
8/14		6/11

3 post 5 miss. 4 block 2/2 lob

Saves distribution goalkeepers

1 H. Wu

3/10		0/3
0/1		1/2
5/8		2/8

18 H. Li

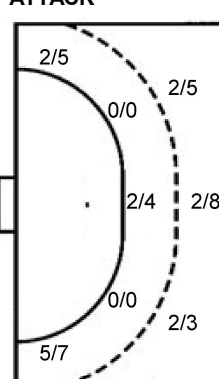
0/1		
1/2		1/3

TOTAL

3/11		0/3
0/1		1/2
6/10		3/11

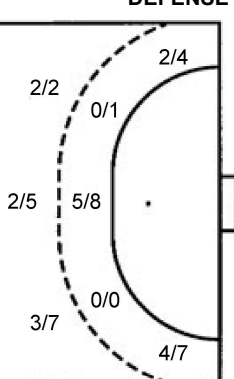
Shots by position

ATTACK



7m penalties 2/3
Fastbreak 4/6
Breakthrough 4/14
Long dist. 0/0

DEFENSE



7m penalties 1/2
Fastbreak 1/2
Breakthrough 7/11
Long dist. 0/2

Shooting statistics

Position	Goals	Sav.	Miss.	Post	Blk.	Total	%
Back (9m)	6	5	0	1	4	16	38
Line (6m)	2	2	0	0	0	4	50
Wing	7	4	0	1	0	12	58
7m penalties	2	1	0	0	0	3	67
Fastbreak	4	1	0	1	0	6	67
Breakthrough	4	5	5	0	0	14	29
Total	25	18	5	3	4	55	45

Jersey number Tot. Total shooting 6m 6m (line) shooting 9m 9m shooting Wng Wing shooting FB Fastbreak sh. 7m 7m penalty sh.
Brk. Breakthrough sh. LD Long distance sh. As. Assists PC Pass clear chance E7 Earned 7m pen. TF Technical faults St. Steals
2m 2m punishments C7. Committed 7m E2 Earned 2m pun. YC. Yellow cards R/B Red/Blue cards Blk. Blocks S Starting Line-up

Handball statistics and livescore by Toma-soft ltd (www.toma-soft.hr)

