



24th IHF Women's Junior (U20) World Championship



Main Round - Group III, 1. round

Match Team Statistics

France 42 - 15 China

24.6.2024. 18:30

Match No. 54

(16 - 9) (26 - 6)

Attendance: 100

Sport Centre Jane Sandanski

Referees: Vesna Balvan (BIH) / Tatjana Prastalo (BIH)

France

Players		Goals / shots									Attack					Def.			Penalties			TP			
#	Surname and name	S	Tot.	%	9m	6m	Wing	7m	FB	Brk.	LD	As.	PC	E7	E2	TF	St.	C7	Blk	YC	2m		R	B	
5	ERRARD Manon	S	3/3	100		1/1	1/1		1/1																16:25
6	KARAMOKO Fatou		2/3	67	1/2					1/1		2				1	1								31:52
10	TUCELLA Emma		6/7	86			1/2	1/1	4/4			1													43:35
11	TEXIER Louane		4/7	57			0/3		3/3	1/1															25:02
12	SAMZUN Zazie	S										2				1									21:44
13	SISSOKO DABO Assa		5/8	63	3/5				0/1	2/2			1			1	2								22:01
14	DURY Nina	S	3/4	75			2/2		1/2																12:53
15	MONTEILLET Alice		5/11	45	4/9	1/1				0/1						1			1						24:58
17	BORG Enola	S	1/2	50	0/1					1/1		4	1			2	1								28:26
18	PERRET Nina	S	1/1	100	1/1							3	1	1			1								27:47
19	MBATA Eva	S	3/5	60	1/2				0/1	2/2		2			1	1		2	3		1				42:56
21	GENYAH Séphora		4/4	100			2/2		2/2							1									22:11
22	NIKINDANDA Clemence		4/4	100		3/3				1/1			1						5	1	1				33:19
23	PINTAT Lilou	S										3													11:49
24	TIGNON Alix	S										1				1									38:14
25	BORG Lylou		1/1	100						1/1		4	2			1									16:48
Team / bench																									
UKUPNO			42/60	70	10/20	5/5	6/10	1/1	11/14	9/10	0/0	22	6	1	1	10	5	2	9	1	2	0	0		

Goalkeepers		Saves / shots								
#	Surname and name	Tot.	%	9m	6m	Wing	7m	FB	Brk.	LD
12	SAMZUN Zazie	6/11	55	3/4	1/1	2/2	0/1		0/3	
24	TIGNON Alix	9/19	47	6/11	0/1	2/3	0/1	0/1	1/2	
TOTAL		15/30	50	9/15	1/2	4/5	0/2	0/1	1/5	0/0

Coach: Eric Baradat

Number of attacks: 67, Efficiency: 63%, Average Duration: 23.09 seconds

Attack by type of defense

	Shots	9m	6m	Wing	TF	E7	E2
On def. 6-0	6/9	1/4	0/0	3/3	3	0	0
On def. 5-1	3/4	1/1	1/1	0/1	1	0	0
On def. 4-2	20/31	8/15	3/3	3/6	6	1	1
Fastbreak	11/14				0	0	0

Defense by type

	Total	9m	6m	Wing	Stl.	C7	2m
Def. 6-0	12/43	6/28	1/3	1/6	5	2	0
Fastbreak	1/1				0	0	2

Attack with superiority / minority / goalkeeper out

	Attack				Reaction		
	Att.	Eff.	Shots	TF	FB	LD	Tot.
6 on 6	62	60%	37/52	10			
6 on 5	1	100%	1/1	0			
5 on 6	4	100%	4/4	0			

Player superiority / GK out counted at the end of attack (in case it changes during attack)

Defense with superiority / minority / goalkeeper out

	Attack				Reaction		
	Att.	Eff.	Shots	TF	FB	LD	Tot.
6 on 6	60	23%	14/37	23			
5 on 6	1	0%	0/1	0			
6 on 5	6	17%	1/4	2			

Numbers show attacking numbers of opponent. Lower efficiency of opponent means better defense of this team

Jersey number Tot. Total shooting 6m 6m (line) shooting 9m 9m shooting Wng Wing shooting FB Fastbreak sh. 7m 7m penalty sh.
 Brk. Breakthrough sh. LD Long distance sh. As. Assists PC Pass clear chance E7 Earned 7m pen. TF Technical faults St. Steals
 2m 2m punishments C7. Committed 7m E2 Earned 2m pun. YC. Yellow cards R/B Red/Blue cards Blk. Blocks S Starting Line-up



24th IHF Women's Junior (U20) World Championship



Main Round - Group III, 1. round

Match Team Statistics

Match No. 54

France 42 - 15 China

(16 - 9) (26 - 6)

24.6.2024. 18:30

Attendance: 100

Sport Centre Jane Sandanski

Referees: Vesna Balvan (BIH) / Tatjana Prastalo (BIH)

Shot distribution by player

5 M. Errard

2/2		
	1/1	

6 F. Karamoko

1/1		1/1

1 miss.

10 E. Tucella

		2/2
0/1		
1/1		1/1

2/2 lob

11 L. Texier

		2/2
1/1		
	0/1	

2 miss. 1/1 lob

13 A. Sissoko Dabo

1/1		2/2
2/2		

1 post 2 miss.

14 N. Dury

1/1		
1/1		1/1

1 post

15 A. Monteillet

1/1		
	1/3	1/2
1/1		1/1

2 miss. 1 block

17 E. Borg

		1/1

1 post

18 N. Perret

1/1		

19 E. Mbata

1/1		
2/3		

1 miss.

21 S. Genyah

		2/2
		2/2

22 C. Nikindanda

	2/2	
		1/1
		1/1

23 L. Pintat

25 L. Borg

		1/1

TOTAL

6/6	2/2	6/6
2/3	1/3	4/5
8/9	1/2	9/9

3 post 8 miss. 1 block 3/3 lob

Saves distribution goalkeepers

12 Z. Samzun

		0/1
1/1	1/1	1/1
1/2	1/2	1/2

24 A. Tignon

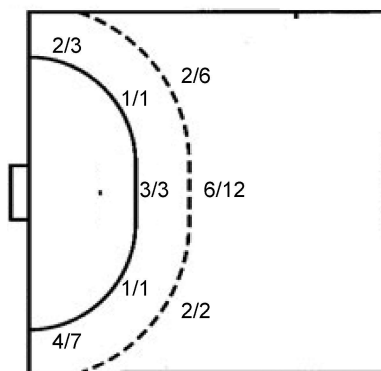
2/4		0/3
1/1		
2/4	2/3	1/2

TOTAL

2/4		0/4
2/2	1/1	1/1
3/6	3/5	2/4

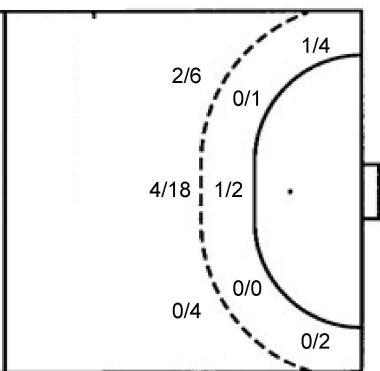
Shots by position

ATTACK



7m penalties 1/1
Fastbreak 11/14
Breakthrough 9/10
Long dist. 0/0

DEFENSE



7m penalties 2/2
Fastbreak 1/1
Breakthrough 4/6
Long dist. 0/0

Shooting statistics

Position	Goals	Sav.	Miss.	Post	Blk.	Total	%
Back (9m)	10	3	5	1	1	20	50
Line (6m)	5	0	0	0	0	5	100
Wing	6	2	2	0	0	10	60
7m penalties	1	0	0	0	0	1	100
Fastbreak	11	0	1	2	0	14	79
Breakthrough	9	1	0	0	0	10	90
Total	42	6	8	3	1	60	70

Jersey number Tot. Total shooting 6m 6m (line) shooting 9m 9m shooting Wng Wing shooting FB Fastbreak sh. 7m 7m penalty sh.
Brk. Breakthrough sh. LD Long distance sh. As. Assists PC Pass clear chance E7 Earned 7m pen. TF Technical faults St. Steals
2m 2m punishments C7. Committed 7m E2 Earned 2m pun. YC. Yellow cards R/B Red/Blue cards Blk. Blocks S Starting Line-up

Handball statistics and livescore by Toma-soft ltd (www.toma-soft.hr)



24th IHF Women's Junior (U20) World Championship



Main Round - Group III, 1. round

Match Team Statistics

France 42 - 15 China

24.6.2024. 18:30

Match No. 54

(16 - 9) (26 - 6)

Attendance: 100

Sport Centre Jane Sandanski

Referees: Vesna Balvan (BIH) / Tatjana Prastalo (BIH)

China

Players		Goals / shots										Attack					Def.			Penalties				TP	
#	Surname and name	S	Tot.	%	9m	6m	Wing	7m	FB	Brk.	LD	As.	PC	E7	E2	TF	St.	C7	Blk	YC	2m	R	B		
1	SUN Yihan																								10:42
3	PAN Fengying	S	1/4	25	1/3	0/1							2				6			2					40:21
5	ZHUO Ziyi		0/2	0	0/2								1			1						1			17:29
6	LIU Ziran		0/4	0	0/4								1		1										7:24
7	ZHANG Siyu		0/1	0			0/1																		20:27
8	LIANG Jing		2/8	25	2/8								2	1											22:10
10	SHI Zihan	S	0/1	0			0/1						1			1		1							42:31
12	YANG Chunfeng															1									31:47
13	ZHUANG Hongyan		1/5	20	0/3					1/2			1			4	1			1					27:45
15	YANG Yue															1									17:29
18	WANG Jingjing	S	1/3	33	1/2		0/1							1	1	2	1								34:58
20	HOU Changqing	S	1/2	50		1/2										1									42:47
22	LI Luyao	S																							17:31
23	WANG Xiaoyun		1/4	25	0/3					1/1						1									18:30
28	LIU Xuedan	S	6/8	75	2/3			2/2		2/3			1	1		2									28:40
53	LIU Yuting	S	2/4	50			1/3		1/1							2									39:29
	Team / bench															3									
	UKUPNO		15/46	33	6/28	1/3	1/6	2/2	1/1	4/6	0/0	5	5	2	2	25	2	1	2	1	1	0	0		

Goalkeepers		Saves / shots									
#	Surname and name	Tot.	%	9m	6m	Wing	7m	FB	Brk.	LD	
1	SUN Yihan	1/11	9	1/6	0/1	0/1	0/1	0/1	0/1	0/1	
12	YANG Chunfeng	4/20	20	2/6	0/2	1/2		0/4	1/6		
22	LI Luyao	1/17	6	0/1	0/2	1/5		0/6	0/3		
	TOTAL	6/48	13	3/13	0/5	2/8	0/1	0/11	1/10	0/0	

Coach: Suzana Lazovic

Number of attacks: 67, Efficiency: 22%, Average Duration: 30.15 seconds

Attack by type of defense

	Shots	9m	6m	Wing	TF	E7	E2
On def. 6-0	12/43	6/28	1/3	1/6	25	2	2
Fastbreak	1/1				0	0	0

Defense by type

	Total	9m	6m	Wing	Stl.	C7	2m
Def. 6-0	6/9	1/4	0/0	3/3	0	0	0
Def. 5-1	3/4	1/1	1/1	0/1	0	0	0
Def. 4-2	20/31	8/15	3/3	3/6	2	1	0
Fastbreak	11/14				0	0	1

Attack with superiority / minority / goalkeeper out

	Attack				Reaction		
	Att.	Eff.	Shots	TF	FB	LD	Tot.
6 on 6	60	23%	14/37	23			
5 on 6	1	0%	0/1	0			
6 on 5	6	17%	1/4	2			

Player superiority / GK out counted at the end of attack (in case it changes during attack)

Defense with superiority / minority / goalkeeper out

	Attack				Reaction		
	Att.	Eff.	Shots	TF	FB	LD	Tot.
6 on 6	62	60%	37/52	10			
6 on 5	1	100%	1/1	0			
5 on 6	4	100%	4/4	0			

Numbers show attacking numbers of opponent. Lower efficiency of opponent means better defense of this team

Jersey number Tot. Total shooting 6m 6m (line) shooting 9m 9m shooting Wng Wing shooting FB Fastbreak sh. 7m 7m penalty sh.
 Brk. Breakthrough sh. LD Long distance sh. As. Assists PC Pass clear chance E7 Earned 7m pen. TF Technical faults St. Steals
 2m 2m punishments C7. Committed 7m E2 Earned 2m pun. YC. Yellow cards R/B Red/Blue cards Blk. Blocks S Starting Line-up

Handball statistics and livescore by Toma-soft ltd (www.toma-soft.hr)



24th IHF Women's Junior (U20) World Championship



Main Round - Group III, 1. round

Match Team Statistics

Match No. 54

France 42 - 15 China

(16 - 9) (26 - 6)

24.6.2024. 18:30

Attendance: 100

Sport Centre Jane Sandanski

Referees: Vesna Balvan (BIH) / Tatjana Prastalo (BIH)

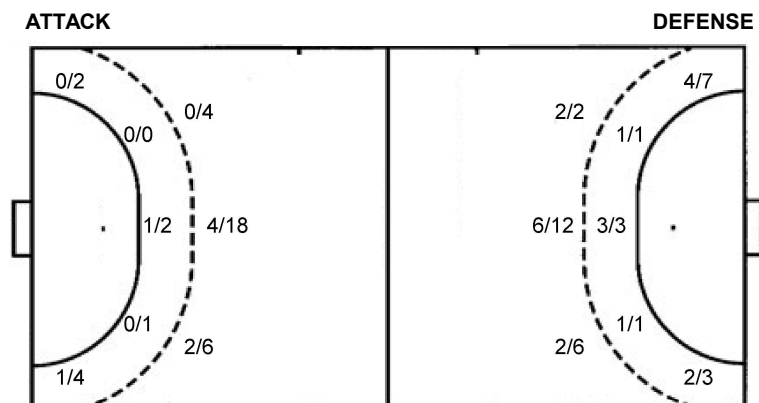
Shot distribution by player

3 F. Pan 0/1 2 block	5 Z. Zhuo 1 miss. 1 block	6 Z. Liu 0/1 1 miss. 2 block	7 S. Zhang 0/1	8 J. Liang 0/1 1/1 0/1 0/1 1/1 0/1 0/1 1 block	10 Z. Shi 0/1	13 H. Zhuang 0/1 0/2 1 post 1/1 lob
15 Y. Yang	18 J. Wang 1/1 0/1 1 miss.	20 C. Hou 1 post 1/1 lob	23 X. Wang 1/1 3 block	28 X. Liu 2/2 2/2 1/1 1/1 1 miss. 0/1 lob	53 Y. Liu 0/1 1/1 1/1 1 miss.	TOTAL 2/4 4/4 0/2 0/1 0/1 3/6 2/5 2/4 2 post 5 miss. 9 block 2/3 lob

Saves distribution goalkeepers

1 Y. Sun 0/1 0/1 0/1 0/1 0/1 0/1 1/2 0/3	12 C. Yang 0/2 0/1 0/3 2/2 1/3 0/5 1/1 0/2	22 L. Li 0/3 0/2 1/2 0/1 0/2 0/1 0/4	TOTAL 0/6 0/2 0/6 1/3 2/3 1/5 1/9 1/2 0/9
--	--	--	---

Shots by position



7m penalties 2/2
Fastbreak 1/1
Breakthrough 4/6
Long dist. 0/0

7m penalties 1/1
Fastbreak 11/14
Breakthrough 9/10
Long dist. 0/0

Shooting statistics

Position	Goals	Sav.	Miss.	Post	Blk.	Total	%
Back (9m)	6	9	4	0	9	28	21
Line (6m)	1	1	0	1	0	3	33
Wing	1	4	1	0	0	6	17
7m penalties	2	0	0	0	0	2	100
Fastbreak	1	0	0	0	0	1	100
Breakthrough	4	1	0	1	0	6	67
Total	15	15	5	2	9	46	33

Jersey number Tot. Total shooting 6m 6m (line) shooting 9m 9m shooting Wng Wing shooting FB Fastbreak sh. 7m 7m penalty sh.
Brk. Breakthrough sh. LD Long distance sh. As. Assists PC Pass clear chance E7 Earned 7m pen. TF Technical faults St. Steals
2m 2m punishments C7. Committed 7m E2 Earned 2m pun. YC. Yellow cards R/B Red/Blue cards Blk. Blocks S Starting Line-up

Handball statistics and livescore by Toma-soft ltd (www.toma-soft.hr)

