



24th IHF Women's Junior (U20) World Championship



Main Round - Group I, 1. round

Match Team Statistics
Match No. 49

Netherlands 20 - 17 Egypt
(9 - 9) (11 - 8)

23.6.2024. 16:15
Attendance: 93
Sport Centre Boris Trajkovski

Referees: Bruna Correa (BRA) / Renata Correa (BRA)

Netherlands

| Players | | Goals / shots | | | | | | | | | Attack | | | | | Def. | | | Penalties | | | | TP | | |
|---------|-------------------------|---------------|-------|-----|------|-----|------|-----|-----|------|--------|-----|----|----|----|------|-----|----|-----------|----|----|---|----|---|-------|
| # | Surname and name | S | Tot. | % | 9m | 6m | Wing | 7m | FB | Brk. | LD | As. | PC | E7 | E2 | TF | St. | C7 | Blk | YC | 2m | R | B | | |
| 1 | VAN DER VORST Nikki | | | | | | | | | | | | | | | | | | | | | | | | |
| 2 | SCHANSSEMA Bianca | S | | | | | | | | | | | | | | | | | | | | | | | 58:41 |
| 3 | VAN DIEPEN Lynn | S | 0/1 | 0 | | | 0/1 | | | | | | | | | | | | | | | | | | 34:59 |
| 5 | VAN DER HELM Judith | S | 3/6 | 50 | 2/4 | | | | 0/1 | 1/1 | | 1 | | | | 3 | 1 | 2 | | | | | | | 47:50 |
| 7 | LOY Jalisha | | | | | | | | | | | | | | | | | | | | | | | | |
| 9 | BAKKER Donna | S | 1/3 | 33 | | | 1/3 | | | | | | | | | | | | | | | | | | 34:42 |
| 11 | LUCHIES Daphne | | 3/4 | 75 | | | | | 1/1 | 2/3 | | | | | | 1 | | | | | | | | | 26:54 |
| 12 | VAN VLIET Lois | | 0/1 | 0 | | | 0/1 | | | | | | | | | | 1 | | | | | | | | 28:39 |
| 14 | VAN MAURIK Alieke | | 2/6 | 33 | 1/5 | | | | | 1/1 | | 1 | 2 | | | 2 | 1 | | | | | | | | 26:29 |
| 15 | HOLTMAN Lynn | S | 3/4 | 75 | 1/2 | | | | | 2/2 | | | 1 | | | 4 | | | | | | | | | 30:00 |
| 21 | MAARSCHALKERWEERD Romée | | | | | | | | | | | | | | | | | | | | | | | | |
| 23 | ALDERDEN Rozemarijn | | 3/7 | 43 | 2/5 | 1/2 | | | | | | | | | | 1 | | | | | | | 1 | | 56:10 |
| 24 | HORVERS Maud | S | 1/1 | 100 | | | 1/1 | | | | | | | | | | | | | | | | | | 25:15 |
| 28 | HÖLSCHER Lisa | | 2/3 | 67 | 1/2 | | | | | 1/1 | | | | | 1 | 1 | | | | | | | | | 8:34 |
| 37 | MUILENBURG Fenna | S | | | | | | | | | | | | | | | | 1 | | | | | | 2 | 29:09 |
| 38 | SCHOLTEN Paris | | 2/7 | 29 | 2/7 | | | | | | | 1 | | | | | | | | | | | | | 12:33 |
| | Team / bench | | | | | | | | | | | | | | | | | | | | | | | | |
| | UKUPNO | | 20/43 | 47 | 9/25 | 1/2 | 2/6 | 0/0 | 1/2 | 7/8 | 0/0 | 3 | 3 | 0 | 1 | 12 | 3 | 3 | 1 | 0 | 2 | 0 | 0 | | |

| Goalkeepers | | Saves / shots | | | | | | | | |
|-------------|---------------------|---------------|----|------|-----|------|-----|-----|------|-----|
| # | Surname and name | Tot. | % | 9m | 6m | Wing | 7m | FB | Brk. | LD |
| 1 | VAN DER VORST Nikki | | | | | | | | | |
| 2 | SCHANSSEMA Bianca | 9/26 | 35 | 4/10 | 1/6 | 0/1 | 3/3 | | 1/6 | |
| | TOTAL | 9/26 | 35 | 4/10 | 1/6 | 0/1 | 3/3 | 0/0 | 1/6 | 0/0 |

Coach: Ricardo Clarijs

Number of attacks: 53, Efficiency: 38%, Average Duration: 22.96 seconds

Attack by type of defense

| | Shots | 9m | 6m | Wing | TF | E7 | E2 |
|-------------|-------|------|-----|------|----|----|----|
| On def. 6-0 | 18/38 | 8/22 | 1/2 | 2/6 | 11 | 0 | 1 |
| On def. 5-1 | 1/3 | 1/3 | 0/0 | 0/0 | 1 | 0 | 0 |
| Fastbreak | 1/2 | | | | 0 | 0 | 0 |

Defense by type

| | Total | 9m | 6m | Wing | Stl. | C7 | 2m |
|-----------|-------|------|-----|------|------|----|----|
| Def. 6-0 | 16/31 | 5/16 | 5/6 | 1/2 | 3 | 3 | 0 |
| Def. 5-1 | 1/1 | 1/1 | 0/0 | 0/0 | 0 | 0 | 0 |
| Fastbreak | 0/1 | | | | 0 | 0 | 2 |

Attack with superiority / minority / goalkeeper out

| | Attack | | | | Reaction | | |
|-----------------|--------|------|-------|----|----------|-----|------|
| | Att. | Eff. | Shots | TF | FB | LD | Tot. |
| 7 on 6 (GK out) | 4 | 50% | 2/3 | 1 | 0/0 | 0/0 | 0/0 |
| 6 on 6 (GK out) | 3 | 0% | 0/2 | 1 | 0/0 | 0/0 | 0/0 |
| 6 on 6 | 42 | 38% | 16/33 | 9 | | | |
| 6 on 5 | 3 | 67% | 2/3 | 0 | | | |
| 5 on 6 | 1 | 0% | 0/0 | 1 | | | |

Player superiority / GK out counted at the end of attack (in case it changes during attack)

Defense with superiority / minority / goalkeeper out

| | Attack | | | | Reaction | | |
|-----------------|--------|------|-------|----|----------|-----|------|
| | Att. | Eff. | Shots | TF | FB | LD | Tot. |
| 7 on 6 (GK out) | 6 | 67% | 4/6 | 0 | 0/0 | 0/0 | 0/0 |
| 6 on 6 (GK out) | 2 | 0% | 0/1 | 1 | 0/0 | 0/0 | 0/0 |
| 6 on 6 | 40 | 30% | 12/24 | 16 | | | |
| 6 on 5 | 5 | 20% | 1/2 | 3 | | | |

Numbers show attacking numbers of opponent. Lower efficiency of opponent means better defense of this team

Jersey number Tot. Total shooting 6m 6m (line) shooting 9m 9m shooting Wng Wing shooting FB Fastbreak sh. 7m 7m penalty sh.
Brk. Breakthrough sh. LD Long distance sh. As. Assists PC Pass clear chance E7 Earned 7m pen. TF Technical faults St. Steals
2m 2m punishments C7. Committed 7m E2 Earned 2m pun. YC. Yellow cards R/B Red/Blue cards Blk. Blocks S Starting Line-up



24th IHF Women's Junior (U20) World Championship



Main Round - Group I, 1. round

Match Team Statistics

Match No. 49

Netherlands 20 - 17 Egypt

(9 - 9) (11 - 8)

23.6.2024. 16:15

Attendance: 93

Sport Centre Boris Trajkovski

Referees: Bruna Correa (BRA) / Renata Correa (BRA)

Shot distribution by player

3 L. Van Diepen

| | | |
|--|--|--|
| | | |
| | | |
| | | |

1 miss.

5 J. Van Der Helm

| | | |
|-----|-----|-----|
| | 0/1 | |
| 0/1 | | 1/2 |
| 1/1 | | 1/1 |

7 J. Loy

| | | |
|--|--|--|
| | | |
| | | |
| | | |

9 D. Bakker

| | | |
|-----|--|--|
| | | |
| 0/1 | | |
| 1/1 | | |

1 miss.

11 D. Luchies

| | | |
|-----|-----|--|
| | | |
| | | |
| 2/3 | 1/1 | |

12 L. Van Vliet

| | | |
|--|--|--|
| | | |
| | | |
| | | |

1 miss.

14 A. Van Maurik

| | | |
|-----|--|-----|
| 1/1 | | 0/1 |
| | | |
| 1/1 | | |

2 post 1 block

15 L. Holtman

| | | |
|-----|-----|-----|
| | 0/1 | 1/1 |
| | | 1/1 |
| 1/1 | | |

21 R. Maarschalkerweerd

| | | |
|--|--|--|
| | | |
| | | |
| | | |

23 R. Alderden

| | | |
|-----|--|-----|
| 1/1 | | |
| 1/1 | | 0/1 |
| 1/2 | | |

1 post 1 miss.

24 M. Horvers

| | | |
|-----|--|--|
| | | |
| 1/1 | | |
| | | |

28 L. Hölscher

| | | |
|-----|-----|--|
| 1/1 | 0/1 | |
| | | |
| 1/1 | | |

37 F. Muilenburg

| | | |
|--|--|--|
| | | |
| | | |
| | | |

38 P. Scholten

| | | |
|-----|-----|-----|
| 1/1 | | 0/1 |
| 1/1 | 0/1 | |
| | | |

1 post 1 miss. 1 block

TOTAL

| | | |
|------|-----|-----|
| 3/3 | 0/3 | 1/2 |
| 3/5 | | 2/5 |
| 9/11 | 1/2 | 1/1 |

4 post 5 miss. 2 block

Saves distribution goalkeepers

1 N. Van Der Vorst

| | | |
|--|--|--|
| | | |
| | | |
| | | |

2 B. Schanssema

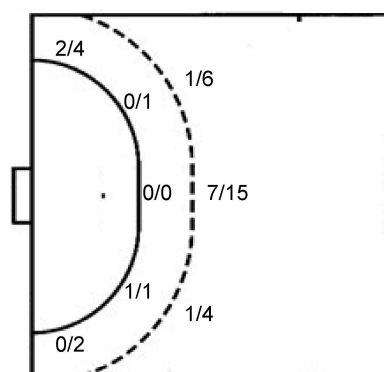
| | | |
|-----|-----|-----|
| 0/2 | | 2/3 |
| 2/4 | 1/1 | 1/2 |
| 2/8 | 0/4 | 0/1 |

TOTAL

| | | |
|-----|-----|-----|
| 0/2 | | 2/3 |
| 2/4 | 1/1 | 1/2 |
| 2/8 | 0/4 | 0/1 |

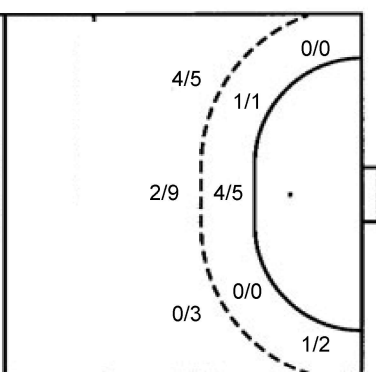
Shots by position

ATTACK



7m penalties 0/0
Fastbreak 1/2
Breakthrough 7/8
Long dist. 0/0

DEFENSE



7m penalties 0/3
Fastbreak 0/1
Breakthrough 5/7
Long dist. 0/0

Shooting statistics

| Position | Goals | Sav. | Miss. | Post | Blk. | Total | % |
|--------------|-----------|-----------|----------|----------|----------|-----------|-----------|
| Back (9m) | 9 | 8 | 2 | 4 | 2 | 25 | 36 |
| Line (6m) | 1 | 1 | 0 | 0 | 0 | 2 | 50 |
| Wing | 2 | 1 | 3 | 0 | 0 | 6 | 33 |
| 7m penalties | 0 | 0 | 0 | 0 | 0 | 0 | 0 |
| Fastbreak | 1 | 1 | 0 | 0 | 0 | 2 | 50 |
| Breakthrough | 7 | 1 | 0 | 0 | 0 | 8 | 88 |
| Total | 20 | 12 | 5 | 4 | 2 | 43 | 47 |

Jersey number Tot. Total shooting 6m 6m (line) shooting 9m 9m shooting Wng Wing shooting FB Fastbreak sh. 7m 7m penalty sh.
Brk. Breakthrough sh. LD Long distance sh. As. Assists PC Pass clear chance E7 Earned 7m pen. TF Technical faults St. Steals
2m 2m punishments C7. Committed 7m E2 Earned 2m pun. YC. Yellow cards R/B Red/Blue cards Blk. Blocks S Starting Line-up

Handball statistics and livescore by Toma-soft ltd (www.toma-soft.hr)



24th IHF Women's Junior (U20) World Championship



Main Round - Group I, 1. round

Match Team Statistics

Netherlands 20 - 17 Egypt

23.6.2024. 16:15

Match No. 49

(9 - 9) (11 - 8)

Attendance: 93

Sport Centre Boris Trajkovski

Referees: Bruna Correa (BRA) / Renata Correa (BRA)

Egypt

| Players | | Goals / shots | | | | | | | | | Attack | | | | | Def. | | | Penalties | | | | TP | | |
|---------|----------------------------|---------------|-------|-----|------|-----|------|-----|-----|------|--------|-----|----|----|----|------|-----|----|-----------|----|----|---|----|---|-------|
| # | Surname and name | S | Tot. | % | 9m | 6m | Wing | 7m | FB | Brk. | LD | As. | PC | E7 | E2 | TF | St. | C7 | Blk | YC | 2m | R | | B | |
| 1 | ASHRAF ABDELGANY Lubna | | | | | | | | | | | | | | | | | | | | | | | | |
| 2 | MOHAMED SONBOL Mona | S | 1/2 | 50 | | 1/1 | | | 0/1 | | | | | | | | 1 | 1 | | | | | | | 57:27 |
| 4 | ASHRAF ELBARKY Sara | | | | | | | | | | | | 1 | | | | | | 1 | | | | | | 7:36 |
| 5 | AHMED ABDELFATTAH Nawal | | 0/2 | 0 | 0/2 | | | | | | | | | | | 2 | | | | | | | | | 12:39 |
| 8 | OMAR IBRAHIM Mariam | S | 2/6 | 33 | 0/3 | | | 0/1 | | 2/2 | | 1 | | | 1 | 7 | | | | | | | | | 37:49 |
| 11 | OSAMA ABDALLA Lojin | S | 8/14 | 57 | 6/8 | 0/1 | | 0/1 | | 2/4 | | 3 | 1 | 2 | 1 | 5 | 2 | | 1 | | | | | | 49:59 |
| 14 | HATEM SALAMA Kenzy | | | | | | | | | | | | | | | | | | | | | | | | |
| 15 | EHAB ABOSHWIKA Noha | | | | | | | | | | | | | | | | | | | | | | | | |
| 17 | TAMER ATAWEYA Nada | | 1/1 | 100 | | 1/1 | | | | | | | | | | | | | | | | | | | 5:01 |
| 22 | KAMEL GADALLAH Touka | | 0/3 | 0 | 0/2 | | | 0/1 | | | | | | | | | 1 | | | | | | | | 15:33 |
| 25 | AHMED MOHAMED Malak | S | 1/3 | 33 | 0/2 | | | | | 1/1 | | | 1 | 1 | | 1 | | | | | | | | | 53:47 |
| 28 | TAREK ABDELRAHMAN Nadein | | | | | | | | | | | | | | | 2 | | | | | | | | | 5:53 |
| 89 | MAHMOUD ORABY Fatma | S | 3/3 | 100 | | 3/3 | | | | | | | | | | 1 | 1 | | | | | 1 | | | 58:46 |
| 96 | MOHAMED ELWY Sarah | | | | | | | | | | | | | | | | | | | | | | | | |
| 98 | WAEEL SAYED Gihad | S | | | | | | | | | | | | | | | 1 | | | | | | | | 57:47 |
| 99 | SALAHELDIN ABDELKADER Jana | S | 1/2 | 50 | | | 1/2 | | | | | | | | | | | | | | | | | | 57:43 |
| | Team / bench | | | | | | | | | | | | | | | | | | | | | | | | |
| | UKUPNO | | 17/36 | 47 | 6/17 | 5/6 | 1/2 | 0/3 | 0/1 | 5/7 | 0/0 | 4 | 3 | 3 | 2 | 20 | 5 | 0 | 2 | 0 | 1 | 0 | 0 | | |

| Goalkeepers | | Saves / shots | | | | | | | | |
|-------------|------------------------|---------------|----|------|-----|------|-----|-----|------|-----|
| # | Surname and name | Tot. | % | 9m | 6m | Wing | 7m | FB | Brk. | LD |
| 1 | ASHRAF ABDELGANY Lubna | | | | | | | | | |
| 96 | MOHAMED ELWY Sarah | | | | | | | | | |
| 98 | WAEEL SAYED Gihad | 12/32 | 38 | 8/17 | 1/2 | 1/3 | | 1/2 | 1/8 | |
| | TOTAL | 12/32 | 38 | 8/17 | 1/2 | 1/3 | 0/0 | 1/2 | 1/8 | 0/0 |

Coach: **Ramy Abdellatif Mohamed**

Number of attacks: 53, Efficiency: 32%, Average Duration: 44.77 seconds

Attack by type of defense

| | Shots | 9m | 6m | Wing | TF | E7 | E2 |
|-------------|-------|------|-----|------|----|----|----|
| On def. 6-0 | 16/31 | 5/16 | 5/6 | 1/2 | 20 | 3 | 2 |
| On def. 5-1 | 1/1 | 1/1 | 0/0 | 0/0 | 0 | 0 | 0 |
| Fastbreak | 0/1 | | | | 0 | 0 | 0 |

Defense by type

| | Total | 9m | 6m | Wing | Stl. | C7 | 2m |
|-----------|-------|------|-----|------|------|----|----|
| Def. 6-0 | 18/38 | 8/22 | 1/2 | 2/6 | 5 | 0 | 0 |
| Def. 5-1 | 1/3 | 1/3 | 0/0 | 0/0 | 0 | 0 | 0 |
| Fastbreak | 1/2 | | | | 0 | 0 | 1 |

Attack with superiority / minority / goalkeeper out

| | Attack | | | | Reaction | | |
|-----------------|--------|------|-------|----|----------|-----|------|
| | Att. | Eff. | Shots | TF | FB | LD | Tot. |
| 7 on 6 (GK out) | 6 | 67% | 4/6 | 0 | 0/0 | 0/0 | 0/0 |
| 6 on 6 (GK out) | 2 | 0% | 0/1 | 1 | 0/0 | 0/0 | 0/0 |
| 6 on 6 | 40 | 30% | 12/24 | 16 | | | |
| 6 on 5 | 5 | 20% | 1/2 | 3 | | | |

Player superiority / GK out counted at the end of attack (in case it changes during attack)

Defense with superiority / minority / goalkeeper out

| | Attack | | | | Reaction | | |
|-----------------|--------|------|-------|----|----------|-----|------|
| | Att. | Eff. | Shots | TF | FB | LD | Tot. |
| 7 on 6 (GK out) | 4 | 50% | 2/3 | 1 | 0/0 | 0/0 | 0/0 |
| 6 on 6 (GK out) | 3 | 0% | 0/2 | 1 | 0/0 | 0/0 | 0/0 |
| 6 on 6 | 42 | 38% | 16/33 | 9 | | | |
| 6 on 5 | 3 | 67% | 2/3 | 0 | | | |
| 5 on 6 | 1 | 0% | 0/0 | 1 | | | |

Numbers show attacking numbers of opponent. Lower efficiency of opponent means better defense of this team

Jersey number Tot. Total shooting 6m 6m (line) shooting 9m 9m shooting Wng Wing shooting FB Fastbreak sh. 7m 7m penalty sh.
 Brk. Breakthrough sh. LD Long distance sh. As. Assists PC Pass clear chance E7 Earned 7m pen. TF Technical faults St. Steals
 2m 2m punishments C7. Committed 7m E2 Earned 2m pun. YC. Yellow cards R/B Red/Blue cards Blk. Blocks S Starting Line-up

Handball statistics and livescore by Toma-soft ltd (www.toma-soft.hr)



24th IHF Women's Junior (U20) World Championship



Main Round - Group I, 1. round

Match Team Statistics

Match No. 49

Netherlands 20 - 17 Egypt

(9 - 9) (11 - 8)

23.6.2024. 16:15

Attendance: 93

Sport Centre Boris Trajkovski

Referees: Bruna Correa (BRA) / Renata Correa (BRA)

Shot distribution by player

2 M. Mohamed Sonbol

| | | |
|--|--|-----|
| | | |
| | | |
| | | 1/1 |

1 post

4 S. Ashraf Elbarky

| | | |
|--|--|--|
| | | |
| | | |
| | | |

5 N. Ahmed Abdelfattah

| | | |
|--|--|-----|
| | | 0/1 |
| | | |
| | | |

1 miss.

8 M. Omar Ibrahim

| | | |
|-----|--|-----|
| | | 0/1 |
| | | |
| 2/3 | | |

1 post 1 miss.

11 L. Osama Abdalla

| | | |
|-----|-----|-----|
| 1/1 | | 1/1 |
| 1/2 | | 1/2 |
| 2/3 | 2/2 | |

2 post 0/1 lob

14 K. Hatem Salama

| | | |
|--|--|--|
| | | |
| | | |
| | | |

15 N. Ehab Aboshweka

| | | |
|--|--|--|
| | | |
| | | |
| | | |

17 N. Tamer Ataweya

| | | |
|-----|--|--|
| | | |
| | | |
| 1/1 | | |

22 T. Kamel Gadallah

| | | |
|-----|--|--|
| | | |
| 0/1 | | |
| | | |

1 miss. 1 block

25 M. Ahmed Mohamed

| | | |
|-----|-----|--|
| | | |
| | 0/1 | |
| 1/1 | | |

1 post

28 N. Tarek Abdelrahman

| | | |
|--|--|--|
| | | |
| | | |
| | | |

89 F. Mahmoud Oraby

| | | |
|-----|-----|--|
| 1/1 | | |
| | | |
| 1/1 | 1/1 | |

99 J. Salaheldin Abdelkader

| | | |
|-----|--|--|
| | | |
| 1/1 | | |
| | | |

1 post

TOTAL

| | | |
|-----|-----|-----|
| 2/2 | | 1/3 |
| 2/4 | 0/1 | 1/2 |
| 6/8 | 4/4 | 1/1 |

6 post 3 miss. 1 block 0/1 lob

Saves distribution goalkeepers

1 L. Ashraf Abdelgany

| | | |
|--|--|--|
| | | |
| | | |
| | | |

96 S. Mohamed Elwy

| | | |
|--|--|--|
| | | |
| | | |
| | | |

98 G. Wael Sayed

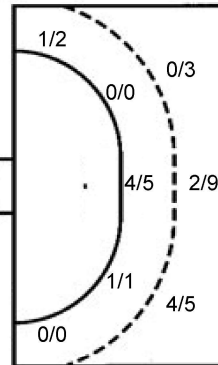
| | | |
|------|-----|-----|
| 0/3 | 3/3 | 1/2 |
| 2/5 | | 3/5 |
| 2/11 | 1/2 | 0/1 |

TOTAL

| | | |
|------|-----|-----|
| 0/3 | 3/3 | 1/2 |
| 2/5 | | 3/5 |
| 2/11 | 1/2 | 0/1 |

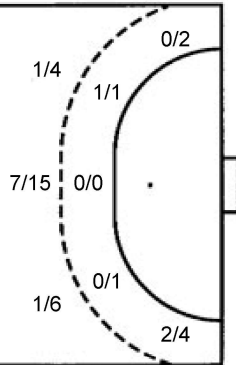
Shots by position

ATTACK



| | |
|--------------|-----|
| 7m penalties | 0/3 |
| Fastbreak | 0/1 |
| Breakthrough | 5/7 |
| Long dist. | 0/0 |

DEFENSE



| | |
|--------------|-----|
| 7m penalties | 0/0 |
| Fastbreak | 1/2 |
| Breakthrough | 7/8 |
| Long dist. | 0/0 |

Shooting statistics

| Position | Goals | Sav. | Miss. | Post | Blk. | Total | % |
|--------------|-------|------|-------|------|------|-------|----|
| Back (9m) | 6 | 4 | 3 | 3 | 1 | 17 | 35 |
| Line (6m) | 5 | 1 | 0 | 0 | 0 | 6 | 83 |
| Wing | 1 | 0 | 0 | 1 | 0 | 2 | 50 |
| 7m penalties | 0 | 3 | 0 | 0 | 0 | 3 | 0 |
| Fastbreak | 0 | 0 | 0 | 1 | 0 | 1 | 0 |
| Breakthrough | 5 | 1 | 0 | 1 | 0 | 7 | 71 |
| Total | 17 | 9 | 3 | 6 | 1 | 36 | 47 |

Jersey number Tot. Total shooting 6m 6m (line) shooting 9m 9m shooting Wng Wing shooting FB Fastbreak sh. 7m 7m penalty sh.
 Brk. Breakthrough sh. LD Long distance sh. As. Assists PC Pass clear chance E7 Earned 7m pen. TF Technical faults St. Steals
 2m 2m punishments C7. Committed 7m E2 Earned 2m pun. YC. Yellow cards R/B Red/Blue cards Blk. Blocks S Starting Line-up

